

## Key Features

**Substrate:** Lightweight hollow profiles in solid aluminium

**Application:** External and Internal

**Customisable:** Yes

## Fire Compliance:

- > BCA Compliant - Meets BCA Deemed to Satisfy provision C1.10. and C1.12(e).
- > Fire Tested AS/NZ 3837-1998: Group 1 Rating.
- > Fire Tested AS/NZ 1530.3-1999: Spread of Flame – Index 0.

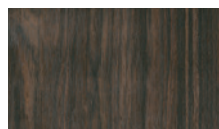
## Finish Options

Created to replicate actual timber species, our 18 photo-realistic colour options, most of which include a unique texture feel to enhance realism, will complement or add contrast to any surface.

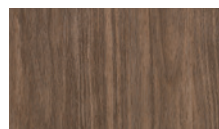
Colour matched end caps are also available to ensure a seamless finish.



Liquorice Oak / Textured



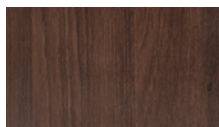
Striped Ebony / Smooth



European Walnut / Smooth



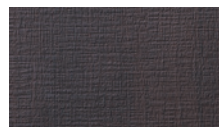
Grey Elm / Smooth



American Walnut / Textured



Limed Hoop Pine / Textured



Wenge / Textured



Alaskan Fig / Textured



Acacia / Textured



Charcoal Oak / Textured



Planked Oak / Smooth



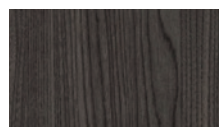
Golden Pine / Textured



Spring Ash Oak / Textured



Brown Oak / Textured



Ebony / Textured



Heritage Walnut / Textured



Tasmanian Oak / Textured



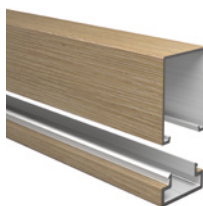
Hazlenut / Textured

## Profile Options

Select from one of our standard batten or plank 2 piece click profile options.

Contact our Architectural Team if you have any other profile requirements not listed.

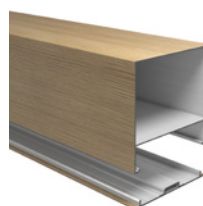
Standard 4m lengths for all profiles.



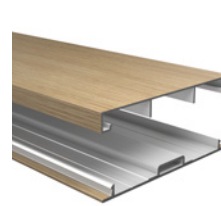
30x50mm Batten



30x85mm Batten



100x100mm Batten



12x100mm Plank

## Installation

Concealed 2-piece direct fix clip system with a simple “fix and click” application. Screw the backing clip to the substrate or sub-frame and click in the main profile.

*Full product and installation details available on request or at [atkar.com.au/designerwood](http://atkar.com.au/designerwood)*

## Maintenance

No maintenance required.

General cleaning and product checks recommended.

## Warranty

10 year warranty against splitting, warping, expanding, fade or insect damage. Suitable for high UV, high humidity and marine environments.

## Head Office

17-19 David Lee Rd Hallam VIC 3803 Australia  
PO Box 1143 Narre Warren MDC 3805  
t 03 9796 3333 f 03 9796 3389

## WA/SA Region

PO Box 710 Joondalup DC 6919  
t 08 6323 5662  
[atkar.com.au](http://atkar.com.au)