

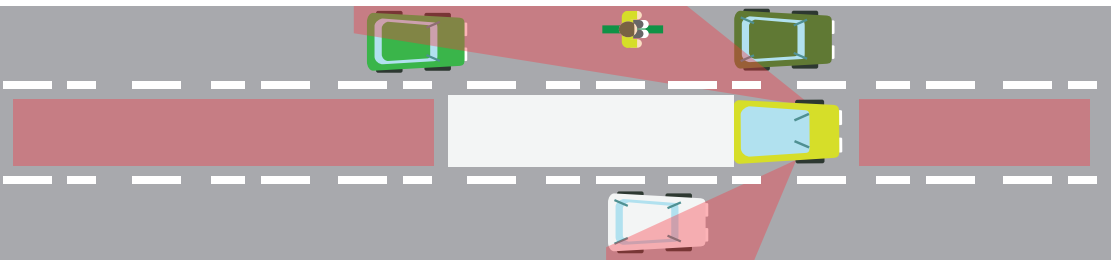
IF YOU CAN'T SEE MY MIRRORS I CAN'T SEE YOU

QUICK FACTS

What is a blind spot?

A blind spot is where you as a driver lose sight of the vehicles and cyclists around you.

Truck blind spots



The red shade shows where the blind spots are located for a truck:

- immediately in **front** of the truck
- beside the truck **driver's door**
- directly **behind** the truck
- on the **passenger side** which runs the length of the truck and extends out three lanes.

Tip: Get clear of a truck driver's blind spots as soon as you can. Move to a position well in front of or behind the truck, where the driver can see you.

Sources: <http://www.tmr.qld.gov.au/Safety/Driver-guide/Sharing-the-road-with-other-road-users/Heavy-vehicles.aspx>

New technologies



Blind spot sensors can be fitted to trucks to notify the driver if there is a vehicle or cyclist in one of their blind zones. Many new trucks now have these sensors as standard fitment.

Tips for cyclists

- **Recognise** that truck or bus drivers may not be able to see you
- **Never cycle up** the left side of a truck or bus stopped at a junction
- **Look out** for trucks or buses turning left from beside or behind you
- **Don't stop too close** to the front of a stopped truck or bus
- **Take up** a visible position at lights: three meters out in front and not by the left kerb or very close to the truck or bus

