



## Printing a Mounting Template

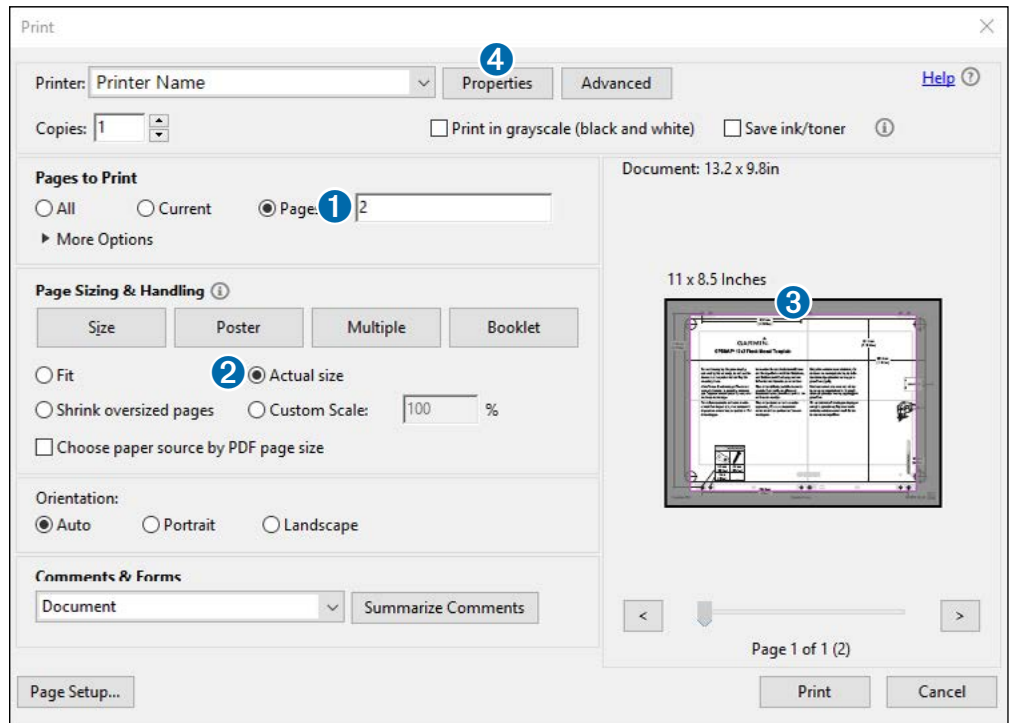
### NOTICE

It is not recommended that you print a mounting template on your own. Use the template that came in the product box.

If you do print the template, you must follow these instructions for printing a mounting template precisely. To print large templates, you need large enough paper and printer. Failure to have the correct sized paper and printer, or a failure to follow these instructions, may result in an incorrectly sized template and therefore an incorrect cutout (too large or too small) on the mounting surface of your boat.

**NOTE:** The options and locations of the options differ between Adobe Acrobat versions and other PDF viewing/printing applications. Be sure the scaling is 100% before printing.

- 1 Select **File > Print**.
- 2 Enter 2 in **Pages to Print** ①.
- 3 Select **Actual Size** ② for **Page Sizing & Handling**.
- 4 Verify that the paper size is larger than the template ③.  
In this example, the paper is not larger than the template.
- 5 If the paper size is not large enough, select **Properties** ④ and select a **Paper Size** that is larger than the template.
- 6 After printing the template, use a ruler to measure at least one dimension line to ensure the template printed to 100% scale.



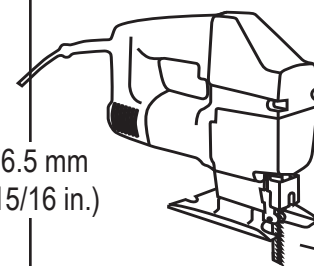
### NOTICE

Garmin is not responsible for any damages or expenses resulting from a miscut mounting surface arising from a failure to follow these instructions.

**GARMIN®**  
**GPSMAP® 9x10xsv Flush Mount**  
**Template**

250 mm  
 (9 13/16 in.)

176.5 mm  
 (6 15/16 in.)



**CUT ALONG THE INSIDE OF THE LINE**  
**DECOUPER A L'INTERIEUR DE LA LIGNE**  
**TAGLIARE LUNGO L'INTERNO DELLA LINEA**  
**AN DER INNENSEITE DER LINIE SCHNEIDEN**  
**CORTA A LO LARGO DE LA PARTE INTERIOR DE LA LÍNEA**  
**CORTE AO LONGO DA PARTE INTERNA DA LINHA**  
**SKÆR LANGS INDERSIDEN AF LINJEN**  
**SKJÆR LANGS INNSIDEN AV LINJEN**  
**SKÄR LÄNGS MED INSIDAN AV LINJEN**

6 mm (1/4 in.)	3.2 mm (1/8 in.)
3.6 mm (9/64 in.)	—

14.6 mm  
 (9/16 in.)

