

# COUNTRY+ ARTS+WA= Annual Report 2014



Download a copy of the Country Arts WA 2014 Annual Report at [www.countryartswa.asn.au](http://www.countryartswa.asn.au)









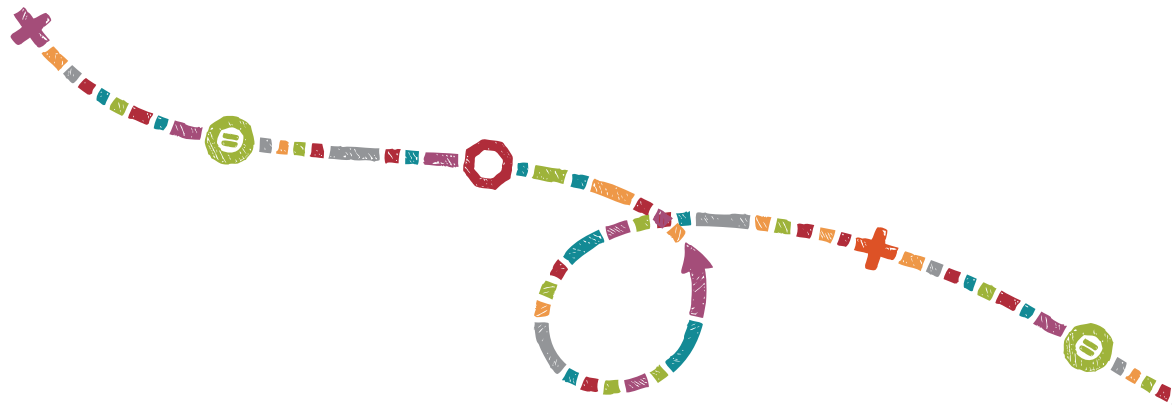
# Contents

<b>Our Purpose, Vision and Values</b> .....	<b>3</b>	<b>Regional Arts Development</b> .....	<b>50</b>
2014 at a Glance .....	4	Core Arts Fund .....	51
Chair's Welcome .....	6	Peak Arts Organisations .....	52
CEO's Welcome .....	7	Key Arts Organisations .....	53
<b>Special Projects</b> .....	<b>8</b>	Vital Arts Organisations .....	54
Regional Arts Australia Summit: Arts & Edges .....	10	The Exchange .....	55
Create Tank .....	16	Drug Aware YCulture Regional .....	56
HARTZ (Hedland Arts Council) .....	18	Connections – Artistic Practice and the Internet .....	60
Aboriginal Art Centre Hub of Western Australia .....	20	Regional Arts Fund .....	61
Gascoyne in May .....	22	Project Fund .....	62
CircuitWest Audience Development Initiative .....	24	Project Fund Successful Applicants .....	62
<b>Membership Program</b> .....	<b>25</b>	Regional Arts Showcase Fund .....	66
Members .....	27	Quick Response Grant .....	67
<b>Performing Arts Touring</b> .....	<b>30</b>	Presenter Travel Assistance .....	69
Sand Tracks .....	31	Partnership Fund .....	71
Sand Tracks at the Summit .....	32	Cultural Worker Positions .....	72
Shows on the Go .....	34	Volunteer Travel Assistance .....	73
Get Hypnotised! .....	35	<b>Key Performance Indicators and Audited Accounts</b> .....	<b>74</b>
Squaring The Wheel .....	36	Operational Key Performance Indicators .....	75
Dust of Uruzgan .....	37	Marketing Key Performance Indicators .....	76
National Touring .....	38	Financial Key Performance Indicators .....	76
The Deep .....	39	Audited Accounts .....	78
CircuitWest Touring .....	40	Independent Audit Report .....	90
The Night Zoo .....	40	<b>Board of Management and Governance</b> .....	<b>92</b>
Regional Schools Touring .....	42	Directors .....	92
Barking Gecko Theatre Company .....	43	Role of the Board .....	96
Spare Parts Puppet Theatre .....	44	<b>Team</b> .....	<b>98</b>
Buzz Dance Theatre .....	45	<b>Internships</b> .....	<b>99</b>
Yirra Yaakin .....	46	<b>Supporters</b> .....	<b>100</b>
Share the Risk .....	47		
Louder Contemporary Music Touring Program .....	49		









## Our Purpose

To build creative, strong and healthy regional communities in Western Australia.

## Our Vision

Arts and culture is woven into the fabric of life in every regional community in Western Australia.

## Our Values

- Celebration
- Excellence
- Sustainability
- Diversity







## 2014 at a Glance

Over the last year Country Arts WA...

- Delivered the Regional Arts Australia Summit: Arts & Edges in Kalgoorlie-Boulder, with 574 delegates in attendance from around Australia. The event presented a total of over 160 individual presentations in and around Kalgoorlie-Boulder, involving 265 artists in tandem with 319 delegates presenting in the program, and involving more than 100 volunteers.
- Secured the attendance of the Federal Minister for the Arts, Senator The Hon. George Brandis QC, State Minister for the Arts, The Hon. John Day MLA and other high profile dignitaries at the Summit; providing a great opportunity for Country Arts WA to showcase the excellence of regional arts practice and how it provides community engagement, capacity building and a wide range of positive impacts in regional and remote WA.
- Delivered the Arts & Edges Public Festival as part of the Summit in Kalgoorlie-Boulder with over 56 public events, including workshops, exhibitions, performances, Aboriginal arts and crafts, Indigenous rock legends Nabarlek and loads of free events to over 20,000 people.
- Welcomed 58 new Country Arts WA Members.
- Managed a touring program that delivered performances and workshops to over 27,000 people; with 154 performances in 122 communities; 200 workshops and travelled over 84,700km across Australia.
- Received 149 funding applications requesting a total of \$818,330 with 60% of the applicants being successful; receiving a funding total of \$493,143. At least one organisation or individual from all nine Western Australian regions was successful in receiving funding from Country Arts WA.
- Supported 497 artists through devolved funding.
- Board of Management collectively volunteered a total of 1,717 hours to the organisation, to a value of \$51,510.





*Mick Torossi from Gascoyne to the Goldfields, Regional Arts Australia Summit: Arts & Edges Opening Night. Photo by Travis Anderson.*



# Chair's Welcome



Welcome to the 2014 Country Arts WA Annual Report. I am delighted to celebrate the many successes that have been achieved throughout the year. Country Arts WA will keep building on them, working to make its home state strong, connected and exciting.

A key success this year was the presentation of the 2014 Regional Arts Australia Summit: Arts & Edges, with support from our major government partner the Department of Culture and the Arts and major program partners the Australia Council for the Arts, Lotterywest, City of Kalgoorlie-Boulder, Tourism WA and Royalty for Regions.

Once again this year, every single region of Western Australia was further cultivated by the services, programs and funding that Country Arts WA provided. We are proud of the work that we do to ensure regional communities are supported to make, experience and enjoy thrilling arts and culture.

The Board of Management continues to be an energetic and relevant voice, working cohesively during the year to ensure the interests of regional Western Australians are addressed. I am honoured to lead this Board, and am inspired by the expertise and generosity of my fellow Directors.

I would like to thank our outgoing Directors for their contribution to regional arts and their continued support: Kira Fong (Kimberley, Co-opted Director), Brittany Moxham (Pilbara, Co-opted Director), James Davies (Mid West, Regional Community Organisation), Andrew Chambers (Kimberley, Regional Community Presenter) and Lindsay Lovering, Perth (Co-opted Director).

On top of that, I would like to acknowledge the vital work done all around regional WA by the many artists, arts workers, community managers, volunteers, cultural leaders and venue managers. Your work is rigorous, tenacious and spectacular; it makes our whole state sing.

***Kate Fielding***

***Chair, Country Arts WA***





# CEO's Welcome



Photo provided by  
© The West Australian.

2014 was a bumper year for Country Arts WA and its stakeholders with the successful delivery of the 2014 Regional Arts Australia Summit: Arts & Edges. We proudly showcased Western Australian regional arts on a national stage and played a leading role in building the national conversation on the value of regional arts practice, profiling the excellent work being created in the regions. A huge thank you to Ben Fox and the creative team, Regional Arts Australia and Country Arts WA staff and Board and to all who participated and supported the event.

The key notes provided us with some exciting provocations which included Brian Ritchie who said:

*"We are on the cusp of a new dawn for the arts in Australia. It is time for all of us artists, organisers, politicians, patrons to join together and demand a voice for regional arts in Australia. We have a responsibility to create our own paradigms, but we also have a right to demand respect and support for our art and the individuals who create and nurture it in sometimes hostile physical or psychological conditions. Regional does not mean inferior. As with any ecosystem organisms adapt, art survives and expresses itself according to the environment. We need not conform to artificial norms to create great art or spectacular events. We are not asking for handouts, merely our share of the intellectual, spiritual and financial pie that we all deserve as citizens of this great country, Australia"*

Country Arts WA believes there is a paradigm shift and a renewed focus on regional arts and we will continue to advocate for this on a state level and through Regional Arts Australia on a national level.

Solid partnerships are crucial for this advocacy and in the delivery of programs and support to artists and organisations in the regions and we thank our funding partners, especially the Department of Culture and the Arts and Lotterywest for their continued and unwavering support. Healthway, Ministry for the Arts, Mental Health Commission and BHP Billiton Iron Ore thank you for enabling us to extend these programs and build new programs.

2014 was also marked by major changes to the federal and state funding environment with the Australia Council and the Department of Culture and the Arts making significant restructures to their funding programs and leadership. Country Arts WA saw internal changes and we bade farewell to Colleen Harris, Kelly Jennings, Drew Wootton, Ivy Klassen-Glanzer, Aoife Adamson and Clea Tibbs-Johansson.

A special thanks to the Country Arts WA team, both board and staff, both past and present, whose combined passion and skills are essential in achieving the level of quality programs that we run. The support of all of our partners, and their staff, is integral to the results achieved in each and every community, which along with our incredible members, enables us to continue to enrich the lives of regional communities across Western Australia.

**Jessica Machin**

**Chief Executive Officer, Country Arts WA**





# Special Projects



In 2009 Country Arts WA extended its modus operandi to include a Special Projects stream. This model broadened the organisation's scope of activities in the regions, providing new opportunities for artists and communities as well as generating much needed income to cover core costs and project staff. By 2014, this major initiative, coupled with the establishment of priority areas has seen the creation of nationally recognised best practice programs and partnerships including:

- \* 2014 Regional Arts Australia Summit: Arts & Edges
- \* Create Tank
- \* HARTZ (Hedland Arts Council)
- \* Aboriginal Art Centre Hub of Western Australia
- \* Gascoyne in May
- \* CircuitWest Audience Development Initiative





*The Pundara Dancers at the Gascoyne River Music Festival, as part of the Gascoyne in May festivals. Photo by Anton Blume.*



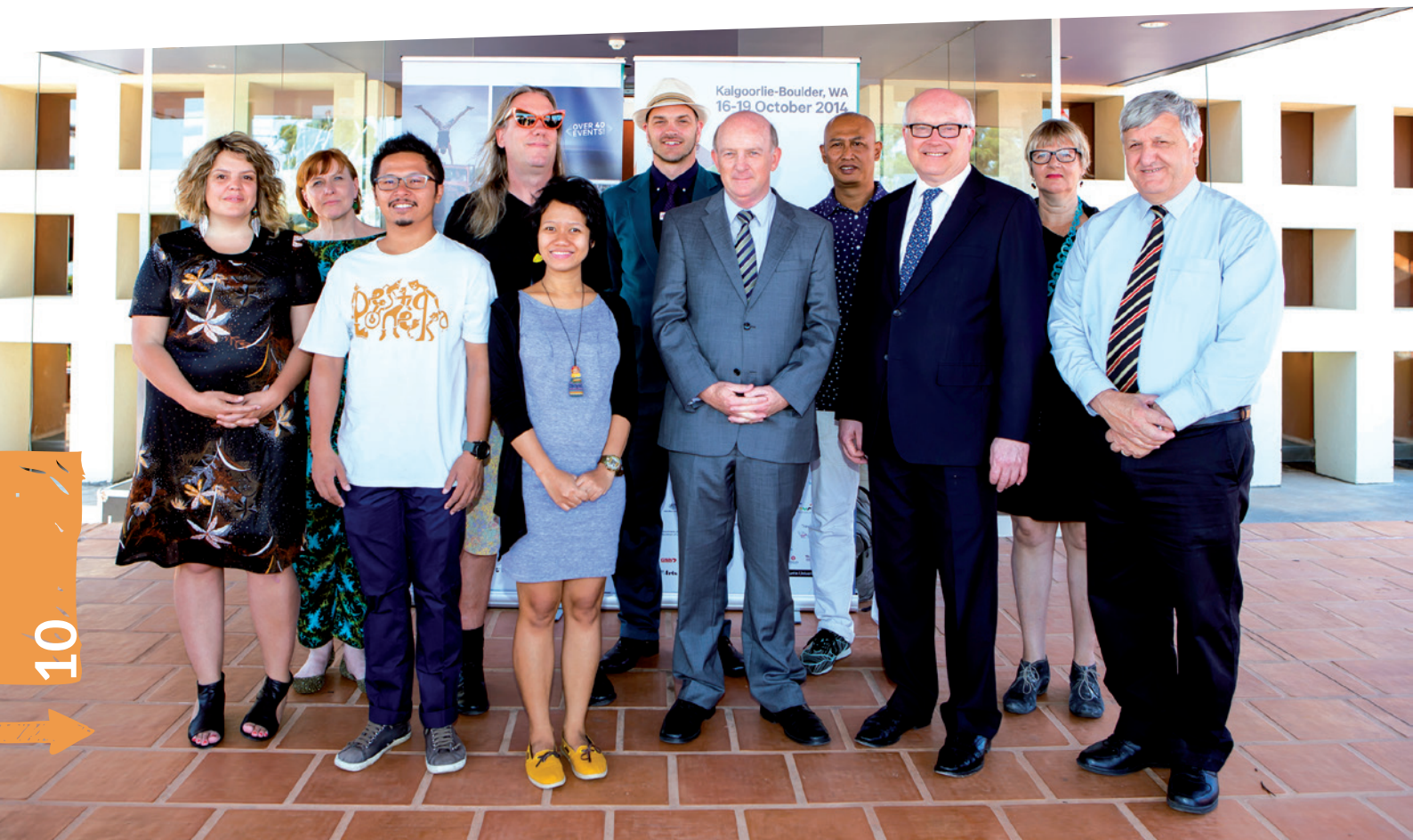
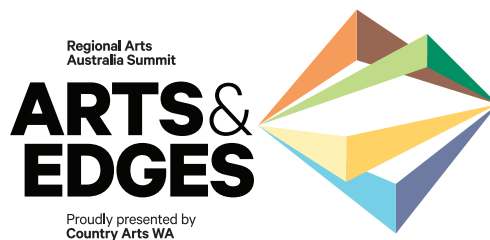
# Regional Arts Australia Summit: Arts & Edges

*"The Summit resonated across the country, changing conversations from Kalgoorlie to Cairns. I'd like to congratulate Artistic Director Ben Fox, the Project Management team, Get Art Done and the entire Country Arts WA team for creating a transformative experience for our sector."*

Kate Fielding, Country Arts WA  
Chair and Regional Arts  
Australia President.

The 2014 Regional Arts Australia Summit: Arts & Edges, presented by Country Arts WA on behalf of Regional Arts Australia was an outstanding success. The Summit celebrated the continuing run of biennial national regional arts events dating back to 1998. Over 574 delegates attended the event and a total of over 160 individual presentations took place in and around the City of Kalgoorlie-Boulder - most within walking distance of the Goldfields Arts Centre, involving 265 artists in tandem with 319 delegates presenting in the program. More than 100 enthusiastic volunteers worked alongside the 30 strong team of people who were employed to deliver the Summit over the four days from 16-19 October 2014.

Goldfields-Esperance regional and local arts projects and artists were profiled and celebrated through a strong foundation of local engagement, as a result of the establishment in 2012 by Country Arts WA of the Local Engagement Group and First Nations Reference Group - representing artists, local businesses and government departments and community leaders.







The major government partner for this event was the WA Department of Culture and the Arts and with the Australia Council for the Arts, Lotterywest, the City of Kalgoorlie-Boulder, Tourism WA and Regional Arts Fund also making significant financial contributions. Other crucial financial contributions were made by Regional Development Australia - Goldfields Esperance, The Ian Potter Foundation and a number of corporate and media partners.

Regional Arts Australia's main aims in producing the biennial event were delivered through a program rich in culture with many layers of opportunities in which delegates could immerse themselves including:

- \* International keynote speakers: Brian Ritchie - curator of MONA FOMA and bass player for the Violent Femmes, Ria Papermoon and Iwan Effendi of Papermoon Puppet Theatre (Jogjakarta), Genevieve Grieves - accomplished filmmaker and media artist, Lindy Hume - Artistic Director of Opera Queensland and Mella Jaarsma and Nindityo Adipurnomo of Cemeti Art House (Jogjakarta).
- \* Twenty two panel discussion events such as the Special Early Morning Panel - *On the Edge of Something Big* with Senator the Hon. George Brandis QC, Lindy Hume, Genevieve Grieves and Brian Ritchie, moderated by Michael Cathcart of ABC Radio National's Books and Arts.
- \* Unique delegate activities, networking and professional development, such as the Special Agent sessions.
- \* First Nations engagement, weaving cultural experiences and contact throughout the event and building on community empowerment and intergenerational learning.
- \* Programming and logistical decisions based on a participant-centred model of exchange of ideas and strategies about regional arts and arts projects.
- \* Crazy fun workshops from make your own circus toys to possum skin cloak making, clay pot making to attending the Social Change Hair Salon for a great "do", and engagement with Create Tank projects, the life-size Game of Roads, Humans of the Summit, CouchFort and FilmTank.
- \* Kalgoorlie-Boulder community involvement, from employment and professional development opportunities for arts workers, shared arts experiences at the Summit through to exhibitions and performances including filming of the KBVID.



Images clockwise from top: AACHWA Aboriginal Art Market out of the rain. Nabarlek lead singer Terrah Guymula. Opposite Page: Keynotes and VIPs at the Summit. L to R - Genevieve Grieves, Lindy Hume, Iwan Effendi, Brian Ritchie, Ria Papermoon, Ben Fox, State Minister for the Arts The Hon. John Day MLA, Nindityo Adipurnomo, Federal Minister for the Arts Senator the Hon. George Brandis QC, Mella Jaarsma, Lord Mayor of Kalgoorlie-Boulder, Ron Yuryevich. Photos by Travis Anderson.





The major public engagement element of the Summit was the Arts & Edges Festival comprising of diverse events and activities accessible to the public and Summit delegates. A total of 56 unique public events were presented over four days of programming with total audience numbers of over 20,000 people. This result was achieved despite the severe weather conditions on the major focus day of the festival, forcing much of the outdoor program into central indoor venues.

\* Live performances, live art and exhibitions as part of the festival included: Nabarlek, Goldfields Aboriginal remote communities involvement including, *New Explorations* exhibition - Warakurna Artists; Turklu Birni Community Choir; Bringing Walkatjurra Art to Life; Gascoyne to the Goldfields Circus and Physical Theatre, *Aerial Fire!*; Star Lady Queen of the Desert; *Under a Red Sky*; Twilights Markets; Lyn Hazelton; *Gudirr Gudirr*; *The Burning*; FIVE; *Farm*; *Solace and Yearning*; *A Gala Night with the Duchess* and interactive 24 hour Dance Marathon.







- The Goldfields Aboriginal remote communities also delivered Wilurarra Creative studio workshops, Punu Tjanpi Palyani workshops, Tjuntjunjara workshops and performances.
- Gallery exhibitions saturated much of the City of Kalgoorlie-Boulder with the Goldfields Walking Trail connecting the dots of art, exhibitions and history of the town and visual animations from DADAA lighting up the Goldfields Art Centre in the evenings.
- Western Desert Kidney Health Project multifaceted involvement throughout the Summit including performances by the Turlku Birni Community Choir and a panel presentation.
- The Big Garlgulla a public art project at the Goldfields Art Centre engaged local artist David Neve.
- Homespun community crochet project and the yarn bombing of the streets of Kalgoorlie.

*Opposite page images clockwise from top: Artistic Director Ben Fox, Federal Minister for the Arts Senator the Hon. George Brandis QC and State Minister for the Arts The Hon. John Day MLA. FARM by Spare Parts Puppet Theatre. First Nations Welcome to Country.*

*Current page images clockwise from top: Ria, Iwan and Tupu from Papermoon Theatre, Indonesia. Collecting wood for Punu Tjanpi Palyani. Brian Ritchie delivering his Keynote address. Photos by Travis Anderson.*







Media coverage of the event was strong with over 264 articles appearing locally, in WA and nationally through Artshub, The Australian, ABC Online, ABC Radio National as well as national coverage in both arts and non-arts industry based publications. Local media coverage of the event in the Kalgoorlie Miner and on local radio was particularly strong throughout the lead-up, during and after the event. Attendance at the Summit by key dignitaries including Senator the Hon. George Brandis QC and the Hon. John Day MLA created media hype during the event with a few key media announcements made by the two Arts Ministers - namely the launch of the Department of Culture and the Art's Regional Action Plan and The Ministry for the Arts Regional Arts Fellowships.

The Closing Ceremony of the Summit culminated in a handover ceremony from Country Arts WA and Western Desert people to the next host - Regional Arts NSW and the Wiradjuri People in New South Wales, represented by Stan Grant. Dubbo, New South Wales was announced as the next host city for the next Regional Arts Australia event - Artlands in 2016. [www.artlands.com.au](http://www.artlands.com.au)

Images from top: Turlku Birni Community Choir performing on Saturday night. Elizabeth Rogers from Regional Arts NSW announcing Artlands Dubbo 2016. Photos by Travis Anderson.



Proudly Presented by



Major Government Partner



Government of **Western Australia**  
Department of **Culture and the Arts**



Partners



Australian Government



Major Program Partners



Government of **Western Australia**  
Department of **Local Government and Communities**



Travel Partner



Media Partners



Supporters







## Create Tank

Kalgoorlie local Owen Hinton was employed as a Creative Producer to facilitate the Create Tank project assisted by a Young Reference Group, consisting of five regional people aged between 18-26. The Create Tank team generated partnerships and sustainable networks between young people and the national arts and cultural sector through digital technology and new media projects delivered in the lead up to and during the Regional Arts Australia Summit: Arts & Edges. Create Tank participants benefited from the professional development opportunities offered by being an integral part of the Summit.

The Create Tank delivered three projects:

- **FilmTank** - a short film project in which regional young people were given the opportunity to submit a short film made on their smart phone. This provided a platform for participants to share their stories, their communities and their creativity, using the technology accessible to them. Ten films were submitted from young people across WA that were then showcased at the Summit.
- **Humans of the Summit** - a street portraiture project in which the Create Tank developed skills in photography and captured portraits of the people around the Kalgoorlie-Boulder area during the Summit. Create Tank asked questions whilst taking the portrait; capturing feedback about regional arts across Australia all which was then showcased online. Professional photographer and creator of Humans of Western Australia, Stuart Holden, provided training to the group in the lead up to and mentoring during the implementation of the project.
- **CouchFort** - a structural project in which the Create Tank team created an adult size cubby house made out of couches, cushions, bamboo and sheets. CouchFort enabled the young artists to create an installation that functioned as a physical space at the Summit. The group were eager to involve people of all ages in the project so people across generations used the CouchFort to stimulate their imaginations.

The Create Tank actively engaged with the Summit website through a blogging project and took part in panel discussions sharing ideas, experiences and inspiration.



Government of Western Australia  
Department of Local Government and Communities



Australia  
Council  
for the Arts

Opposite page from top: Regional Arts Development Officer, Hayley Dart with the Create Tank. L to R Back- Julian Canny, Rosie Sitorus, Rebecca Brewin, Hayley Dart L to R Front Kellee Aberg, Owen Hinton and Emilee Rippon. Photo by Paul Mac Phail. CreateTank crew watching FilmTank presentation at Fossick Gallery. Photo by Hayley Dart. Create Tank training with 'Humans of Western Australia' photographer, Stuart Holden. Photo by Hayley Dart.







# HARTZ

## (Hedland Arts Council)



Larry the Lizard at the NorthWest Festival. Larry was re-imagined into a sculpture by HARTZ Committee Member Richard Brooks. Photo by Zabia Chmielewski.

In June 2012, Country Arts WA and BHP Billiton Iron Ore began a three year partnership to support the grassroots arts organisation HARTZ.

The partnership aims to sustainably reinvigorate the community arts in Port Hedland by supporting the operational capacity of HARTZ, enabling them to strengthen governance, increase membership and provide high quality artistic programming to the community.

In 2014, HARTZ delivered a range arts workshops including print making and book making workshops, which engaged local artists as the facilitators. In a first for the organisation, HARTZ auspiced a grant for Port Hedland artist, Amanda Pentney Firenze. Amanda will undertake professional development over the course of a year including a residency at the Vault in Victoria and one on one sessions with renowned print makers.

In another first, HARTZ hosted the inaugural REstARTZ Exhibition, in a collaborative partnership with local environment group Care for Hedland. Coinciding with Sustainable September, local residents were supported to create artworks from recycled materials. With over 20 submissions, this project was a great participatory model for hobbyists, emerging and young artists to display their works publically and consider environmental impact messages through their art.

HARTZ continued to engage at other events and with other local organisations to build profile in the community. Committee member, Richard Brooks built Larry the Lizard, a large thorny devil that was used to collect cans for the North West Festival. Larry helped promote the REstARTZ project and brought people to the HARTZ tent where they could relax and test their painting skills.

The organisation also supported five committee members and a coordinator to participate in the Regional Arts Australia Summit: Arts & Edges in Kalgoorlie-Boulder.

The Committee completed three intensive governance training sessions with Red Waves Organisational Development. The first two sessions were held over a weekend in Cossack and a later session was held in Port Hedland. The workshops focused on the governance requirements of not-for-profit organisations, as well as increasing the Committee's understanding and interpretation of financial information to enhance their performance as board members. As a result of the outcomes delivered thus far by the partnership, memberships are now showing healthy and consistent growth with a membership base increase from June 2013-June 2014 of 38%.









# Aboriginal Art Centre Hub of Western Australia

*"Art centres are a vital part of life in remote communities and central to addressing our highest priorities of getting children to school, people into jobs and making communities safer"*

Indigenous Affairs Minister  
Nigel Scullion as quoted  
in *The Australian*,  
December 2014



ABORIGINAL ART CENTRE HUB  
Western Australia

The Aboriginal Art Centre Hub of Western Australia (AACWHA) is the peak advocacy and resource agency for Aboriginal art centres in Western Australia. It currently services seven members, representing 32 regional communities and over 450 artists located in the Great Southern, Mid West, Goldfields-Esperance and Pilbara regions of WA.

AACHWA's primary objective is to support and promote Aboriginal art centres located in Western Australia with the aim of encouraging sustainable growth and stability. AACHWA supports the development of Aboriginal art centres by providing advocacy and professional development and coordinating services and resources.

AACHWA is part of a national network of peak bodies that support and advocate for Aboriginal and Torres Strait Islander art centres. In 2013, with support from the WA Government Department of Culture and the Arts and Lotterywest, AACHWA embarked on a project to develop Aboriginal leadership and establish AACHWA as an independent Aboriginal organisation. This independence was achieved in March 2015.

AACHWA's independence will ensure key decisions and strategic directions are being driven in a culturally appropriate way by a Board of Aboriginal artists representing the interests of member art centres. In 2014 AACHWA held its first face-to-face meeting of the nominated Board of Directors in advance of the Regional Arts Australia Summit: Arts & Edges in Kalgoorlie-Boulder and subsequently held a two day business planning workshop in Perth. The workshop outlined the priorities, goals and strategies for the new organisation, especially in relation to art centre capacity building, business and market development, and advocacy.

Additionally, in 2014 AACHWA provided support and services to its members including:

- \* Three-day Art Centre Managers' Conference held in Fremantle with guests from the Australia Council and the WA Government Department of Culture and the Arts
- \* Publication of *On the Road*: a map for art centre managers
- \* Artists' professional development activities and leadership discussions in member art centres
- \* Artist and art centre advocacy at Federal, State and regional levels
- \* Tailored manager recruitment and induction assistance
- \* Remote information technology support services
- \* Monthly e-news distributed to subscribers
- \* Monthly media feed (relevant articles published on the visual arts industry) to AACHWA members

[www.aachwa.com.au](http://www.aachwa.com.au)









# Gascoyne in May

The Gascoyne in May (GiM) had a hugely successful year with over \$200,000 secured in project grants to deliver the shared content of the five Gascoyne festivals in 2014. This included funding from Lotterywest in governance and business planning, resulting in the development of a GiM strategic plan for 2014/15 and 2018/19.

One of the keys to the success of 2014 GiM was the paid employment of three key roles. An Executive Officer was employed to manage grants, festival logistics and administration, an Artistic Director to manage creative and artistic aspects of the program and a Technical Director to support the production of the festivals.

Heavy rain in early May closed the roads to inland Gascoyne towns, at the time of the Festival of Fire in Burringurrah and the Gascoyne River Music Festival in Gascoyne Junction, therefore these events could not go ahead as planned. However components of both festivals were held in Mungullah Aboriginal Village near Carnarvon, so the artists still performed and the public were not disappointed. The Gascoyne River Music Festival was held in Carnarvon keeping the festival weekend intact. The five Gascoyne in May festivals in 2014 were: Barefoot Black Tie, Mungullah, (in lieu of Burringurrah Festival of Fire), The Gascoyne River Music Festival, TropiCOOL and the Ningaloo Whaleshark Festival.

Local artists are an essential element of the festivals, and most of GiM's 2014 productions either financially supported local artists or targeted skills development opportunities for the local artists. Each year GiM is actively building further capacity and skills of local artists, ensuring the identity of each festival remains uniquely Gascoyne, such as the GiM House Troupe who performed at all five festivals. In 2014, the GiM House Troupe have worked at several events outside of GiM including:

- \* How High the River (aerial coaching, set design)
- \* Easter concert at Red Bluff (sound engineering)
- \* Shotgun Club Dinner (Gli Troupe fire show)
- \* The Regional Arts Australia Summit: Arts & Edges

Performances at the GiM festivals in 2014 included the Gascoyne Fire Tableaux, Gascoyne Illuminates, In-Situ Series, The Chipolatas, Spinner and Louise, and finally the fabulous Architects of Spectacle. The artists involved delivered over 57 free workshops to the Gascoyne communities, all ticketed events were sold out and the GiM House Troupe received over 35 intensive workshops leading into and during the 2014 tour.



Government of **Western Australia**  
Department of **Culture and the Arts**



*Opposite page from top: The Chipolatas performing at the 2014 Barefoot Black Tie Festival; 2014 Gascoyne River Music Festival; Architects of Spectacle at the Whaleshark Festival. Photos by Anton Blume.*











# CircuitWest Audience Development Initiative

The CircuitWest Audience Development Project is a three year project (2012-2014) funded by Lotterywest and managed by Country Arts WA. This project provides skills, resources and other support to CircuitWest, the WA network of performing art centres. The CircuitWest Audience Development Project Coordinator works closely with each venue to build their local audiences, with a particular focus on marginalised and disadvantaged audiences.

2014 highlights in the CircuitWest Audience Development Initiative included:

- \* The development of an analysis tool which enables the CircuitWest network to measure performance on industry best-practice audience development strategies. This tool allows the venues to benchmark against their own current practice as well as that of their peers within the WA.
- \* Worked closely with the CircuitWest members, utilising the Vital Statistics software to gather, report and interpret the audience statistics of their venue.
- \* Successful field trips to six CircuitWest members including Carnarvon Civic Centre, Matt Dann Theatre Port Hedland, Queens Park Theatre Geraldton, Pingelly Town Hall, Margaret River Cultural Centre and Don Russell Performing Arts Centre in Thornlie.
- \* Input was sought from the CircuitWest network about topics to be included in the Tool Kit is being developed with the assistance of two industry experts who have relevant experience. Final delivery of the Tool Kit is anticipated in the first quarter of 2015.



# Membership Program



2014 was the year Country Arts WA took its membership engagement to a new level by implementing the membership strategic plan, ensuring members stayed connected with each other and received worthwhile benefits and opportunities.

The Regional Arts Australia Summit: Arts & Edges offered a generous registration discount to members and identified at the event with a Country Arts WA members' pin. This was a great way for members to identify each other and a starting point for many conversations.

Other 2014 Country Arts WA member highlights included:

- \* A record 58 new members joined the organisation this year
- \* A South West networking event was organised
- \* A two day Brain Ambulance professional development course was held in Perth
- \* Hosting a members-only funding forum with representatives from the Australia Council for the Arts, the Department of Culture and the Arts, Community Arts Network WA (CAN WA) and Country Arts WA
- \* Member access to free event promotion on the Country Arts WA website calendar
- \* Introducing AOG Design as a member partner, offering discounted graphic design work and complimentary web hosting

As at December 2014 Country Arts WA had 248 members representing Presenters, Producers, Artists, Community organisations, local government and thousands of people across regional WA.

The Country Arts WA membership program flourishes because of the partners who generously offer our members benefits and discounts.

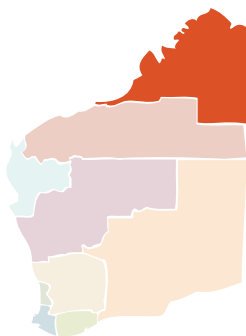






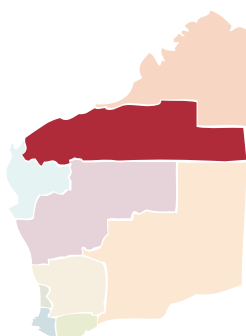
# Country Arts WA Members

(as at 31 December 2014)



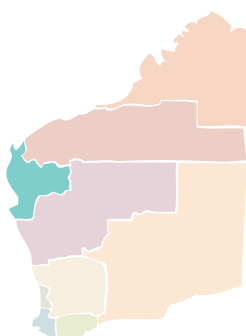
## Kimberley

- \* Fiona Kuiper
- \* Goolarri Media Enterprises
- \* John McCourt
- \* Kim Pierson-Jones
- \* Kira Fong
- \* Magabala Books Aboriginal Corporation
- \* Mangkaja Arts Resource Agency
- \* Puranyangu Rangka Kerrem (Aboriginal Radio)
- \* Rebecca Allen
- \* Sandi Woo
- \* Shinju Matsuri Inc
- \* Shire of Broome
- \* Suzie Haslehurst
- \* Theatre Kimberley
- \* Warmun Art Centre



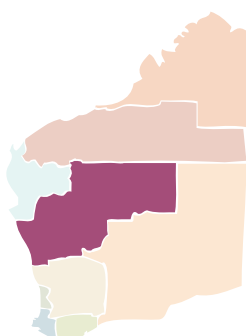
## Pilbara

- \* Amanda Firenze Pentney
- \* Big hART
- \* Catherine Cresswell
- \* Colette McEntee
- \* Hedland Arts Council (HARTZ)
- \* Karingal Neighbourhood Centre
- \* Marble Bar Community Resource Centre
- \* Matt Dann Cultural Centre
- \* Pilbara Development Commission
- \* Roebourne Art Group Aboriginal Corporation
- \* Shire of Ashburton
- \* Shire of Roebourne



## Gascoyne

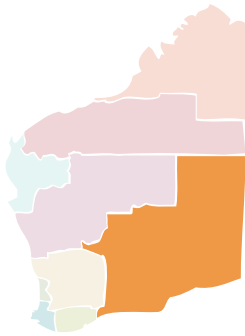
- \* Carnarvon Civic Centre
- \* Exmouth Cultural Art Centre
- \* Gascoyne Arts Council
- \* Gascoyne Development Commission
- \* Janette Ellis
- \* Kim Whitehall-Holla
- \* Rosie Seager
- \* Shire of Exmouth
- \* Shire of Shark Bay
- \* Shire of Upper Gascoyne
- \* Stephanie Leca
- \* Suzanne McHutchison



## Mid West

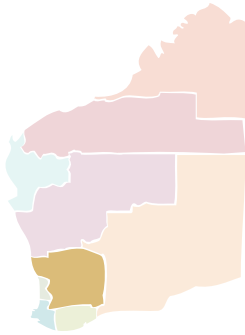
- \* Annette Sellers
- \* Chris Budhan
- \* Coorow Community Resource Centre
- \* Gail Allison
- \* Geraldton-Greenough Regional Arts Gallery
- \* James Davies
- \* Joey Martin
- \* Julian Canny
- \* Kalbarri Arts & Craft Group
- \* Lorraine Malone
- \* Nan Rickards
- \* Northampton Old School Community Initiative
- \* Queens Park Theatre
- \* Sari Jacobsen
- \* Shire of Cue
- \* Shire of Morawa
- \* Shire of Perenjori
- \* Stacey Petterson
- \* Theatre 8 West





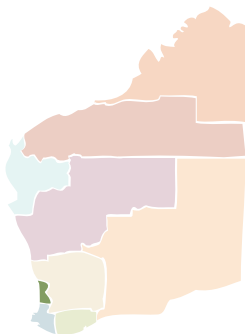
## Goldfields-Esperance

- \* Ange Leech
- \* ArtGold Inc
- \* City of Kalgoorlie-Boulder
- \* Dale Johnson
- \* Eleanor O'Driscoll
- \* Esperance Civic Centre
- \* Esperance Community Arts
- \* Fay O'Brien
- \* Friends of the Goldfields Arts Centre
- \* Goldfields Arts Centre
- \* Goldfields Repertory Club
- \* Heather Gee
- \* Hopetoun Community Resource Centre
- \* Hopetoun Progress Association
- \* Jennifer Chambers
- \* Jillian Baker
- \* Kambalda Cultural and Arts Group Inc
- \* Kate Fielding
- \* Laverton Leonora Cross Cultural Association
- \* Lee Harrop
- \* Madeleine Norman
- \* Merle Bennett
- \* Pat Meadows
- \* Ravensthorpe Community Resource Centre
- \* Ravensthorpe Regional Arts Council
- \* Ross Beckett
- \* Shire of Dundas
- \* Shire of Menzies
- \* Stage Left Theatre Troupe
- \* The Cannery Arts Centre
- \* Wendy Duncan MLA
- \* Walkatjurra Cultural Centre



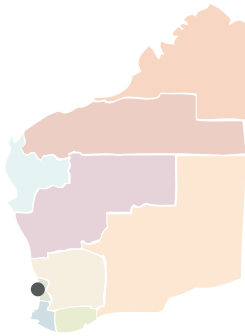
## Wheatbelt

- \* Andrea Gray
- \* Arts Narrogin
- \* Avon Valley Arts
- \* Avril Baxter
- \* Beverley Station Arts
- \* Bruce Rock Community Resource Centre
- \* Cervantes Cultural Committee
- \* Cummins Theatre
- \* Dandaragan Repertory Club
- \* Dennis Bishop
- \* Hyden Community Resource Centre
- \* Inspirational Community Arts Network
- \* Jurien Bay Community Resource Centre
- \* Kellerberrin Community Resource Centre
- \* Kulin Arts
- \* Lake Grace Artists Group
- \* Lake Grace Development Association
- \* Laurena Richards
- \* Member for the Central Wheatbelt
- \* Moora Performing Arts Centre
- \* Mukinbudin Community Resource Centre
- \* Ned Crossley
- \* Northam Heritage Forum Inc
- \* Quairading Creative Arts
- \* Richard Apel
- \* Richard Wells
- \* Sandra Murray
- \* Shire of Bruce Rock
- \* Shire of Corrigin
- \* Shire of Dalwallinu
- \* Shire of Goomalling
- \* Shire of Kellerberrin
- \* Shire of Kulin
- \* Shire of Northam
- \* Shire of Tammin
- \* Shire of Toodyay
- \* Shire of Wagin
- \* Shire of Yilgarn
- \* Shire of York
- \* Taryn Blight
- \* The York Society Inc
- \* Wagin Community Resource Centre
- \* Wickepin Community Resource Centre



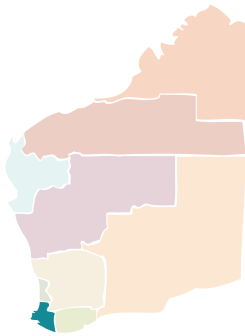
## Peel

- \* Boddington Community Resource Centre
- \* City of Mandurah
- \* Community First International
- \* David Templeman MLA
- \* Fairbridge Festival
- \* Janice Watkins
- \* Mandurah Performing Arts Centre
- \* Regional Development Australia Peel
- \* Rhys Williams



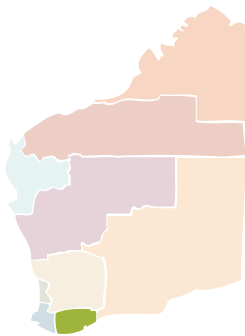
## Perth

- \* Abmusic Aboriginal Corporation
- \* Andy Farrant
- \* Artrage Inc
- \* Artsource Fremantle
- \* Ausdance WA
- \* Barking Gecko Theatre Company
- \* Bec Massey
- \* Black Swan State Theatre Company
- \* Buzz Dance Theatre
- \* Carly Davenport Acker
- \* Chris Tan
- \* Chrissie Parrott
- \* Christina Araujo
- \* Community Arts Network WA
- \* Courtney Whitehall-Holla
- \* Debbie Millard
- \* Doone McAlary
- \* Hon. Lynn MacLaren MLC
- \* International Art Space
- \* James Forsyth
- \* Jenine Mackay
- \* Joel Smoker
- \* Kelly Jennings
- \* Laura Scott
- \* Museums Australia
- \* Natural Wings: Aerial Dance Theatre
- \* Nerida Glanfield
- \* Ochre Contemporary Dance Company
- \* Olwyn Williams
- \* Paul Mac Phail
- \* Paul Rosair
- \* Performing Lines WA
- \* Perth Laughs Inc
- \* Perth Theatre Company
- \* Peter Rupp
- \* Propel Youth Arts WA
- \* Rose Murray
- \* Shane Colquhoun
- \* Spare Parts Puppet Theatre
- \* The Blue Room Theatre
- \* Thelma Cluning
- \* West Australian Opera
- \* writingWA
- \* Yirra Yaakin Aboriginal Corporation



## South West

- \* Arts Margaret River
- \* Balingup Progress Association
- \* Bunbury Musical Comedy Group Inc
- \* Bunbury Regional Art Galleries
- \* Bunbury Regional Entertainment Centre
- \* Caroline Haines
- \* City of Bunbury
- \* City of Busselton
- \* Collaboration WA
- \* Country Music Club of Boyup Brook
- \* Dardanup Bull & Barrel Festival
- \* Donna Fortescue
- \* Dunsborough & Districts Program Association
- \* Goomburrup Aboriginal Corporation
- \* Greenbushes Community Resource Centre
- \* Harvey Recreation & Cultural Centre
- \* Manjimup Community Resource Centre
- \* Mick Murray MLA
- \* Mignon Birch
- \* Nannup Arts Council
- \* Nannup Music Club
- \* Pemberton Visitor Centre
- \* Robin Inkpen
- \* Robyn McCarron
- \* Rose Moyle
- \* Shire of Manjimup
- \* South West Opera Company Inc
- \* Southern Forest Arts
- \* Stirling Street Arts Centre



## Great Southern

- \* Albany Art Group
- \* Amber Perryman
- \* Annette Carmichael
- \* Borden Pavilion Committee
- \* Christine Harrison
- \* City of Albany
- \* Denmark Arts Council
- \* Denmark Youth Services
- \* Ezzard Flowers
- \* Hon. Colin Holt MLC
- \* Ian Haines
- \* Joan Campbell
- \* Kojonup Visitor Centre
- \* Liz Jack
- \* Margaret Dowdell
- \* Marie O'Dea
- \* Patricia Powell
- \* Rosemary Turle
- \* Sarah Vallentine
- \* Shire of Katanning
- \* Southern Edge Arts
- \* The Great Southern Factor
- \* Vancouver Arts Centre
- \* Vivienne Robertson

## Interstate

- \* Katherine McLean (NSW)
- \* DesArt (NT)
- \* Maruku Arts (NT)
- \* Warakurna Artists Aboriginal Corporation (NT)
- \* Katie Harford (NSW)
- \* Arts & Culture Christmas Island (IOT)
- \* Emma Washer (IOT)





# Performing Arts Touring



In 2014 Country Arts WA presented a total of six touring programs, including Shows on the Go, Sand Tracks, CircuitWest, Regional Schools Touring, National Touring and Louder.

These tours collectively travelled 84,788km, delivering 154 performances and 200 workshops to a total of 27,981 people in 122 communities. Fifty seven performers, crew and tour managers were employed and toured for a collective total of 322 days.

The Performing Arts Touring team have continued involvement in the national Blue Heeler National Touring Network providing Western Australian producers with platforms to pitch their work to interstate producers.

The Sand Tracks remote Indigenous contemporary music touring program coordinated another successful tour across three states, to Alice Springs Northern Territory, Amata South Australia, Wingellina, Warburton, Warakurna and Kiwirrkurra in Western Australia.

The performing arts funding programs Louder Contemporary Music Touring program and Share the Risk (a guarantee-against-loss program) were once again available to regional Western Australian organisations.

All of these programs aim to provide regionally based people with greater access to professional performing arts and to enhance cultural life for regional Western Australian communities.



# Sand Tracks

Sand Tracks is the highly regarded remote Indigenous contemporary music touring program co-presented by Country Arts WA and Act-Belong-Commit. Sand Tracks is designed to profile and further develop Aboriginal artists, as well as partner with remote communities to build remote Indigenous and non-Indigenous audiences and community capacity by touring Indigenous bands.

The 2014 Sand Tracks program presented well-known band Blekbala Mujik, touring the central desert region with emerging artists Running Water.

Hailing from Burunga (Gulin-Gulin) in Arnhem Land, Blekbala Mujik is one of the most successful bands to emerge from the Top End of Australia. The band mixes traditional song and instruments with synthesizers and modern production carrying a message of reconciliation and shared dreams.

Running Water hails from the remote community of Kintore, 530kms West of Alice Springs. The band has a growing reputation demonstrated by their stand-out performance at the 2013 Bush Bands Bash where they rallied the crowd to dance and sing along to their Luritja lyrics.

In 2014 the Sand Tracks tour party travelled 10,076km across three states. The tour employed 16 people, including 12 artists and four crew over 26 days. The bands played to some 4,260 people over six performances and provided 14 workshops to 404 participants.

*"Everybody loved it. They had the whole community up and dancing, 200 people rockin' and rollin'. Everybody was enthralled from start to finish. We should hold it every Saturday night!"*

Andrew Gurkin,  
Community Development  
Advisor in Kiwirrkurra

In 2014 Sand Tracks toured to:

Town	State	Locally presented by
Alice Springs	NT	Bush Bands Bash and Music NT
Amata	SA	Amata Community Council
Wingellina	WA	NG Media
Warakurna	WA	Warakurna Community
Warburton	WA	Shire of Ngaanyatjaraku
Kiwirrkurra	WA	Kiwirrkurra Council Aboriginal Corporation



Government of Western Australia  
Department of Culture and the Arts



Australian Government  
Department of the Prime Minister and Cabinet  
Office for the Arts



Australian Government  
Indigenous Culture Support



Government of Western Australia  
Mental Health Commission



Australia  
Council  
for the Arts

Blekbala Mujik performing at Warburton during the 2014 Sand Tracks tour. Photo by Tim Cole.



# Sand Tracks at the Summit

One of the highlights of the Regional Arts Australia Summit: Arts & Edges was the performance by Nabarlek. Having toured twice with Sand Tracks in the central desert, Nabarlek delighted crowds in Kalgoorlie-Boulder with their high energy performance.

Lead singer Terrah Guymala, participated in a panel, discussing the business of making art in remote Australian communities - *One Step Further: Remote Area Artists Talking Business*. The band delighted students at Clontarf College with a visit to the school to present a music workshop.



Nabarlek lead singer Terrah Guymala performing at the Summit. Photo by Travis Anderson.









## Shows on the Go

Shows on the Go is a community-driven touring model, with regional communities voting on shows listed in the annual Touring Menu and online via [www.cyberpaddock.net.au](http://www.cyberpaddock.net.au). Shows are then short-listed for selection, thus ensuring that the Shows on the Go touring program reflect the choices of regional audiences.

Shows on the Go tours are affordable, operate self-sufficiently by travelling with their own technical equipment and thus offer regional and remote communities in Western Australia access to high quality performing arts experiences.

Country Arts WA manages all aspects of tour coordination, including itinerary development, contracting with producers and community presenters, accommodation bookings, vehicle hire, on-road tour management and a marketing campaign.

Regional community presenters are responsible for local presentation and marketing activities, as well as guaranteeing performance fees and royalties. This responsibility creates a strong commitment to each touring production at a local level.

In 2014 the three Shows on the Go tours collectively travelled 33,701km, performed 54 times to a total audience of 5,938 people, delivered 28 workshops to 651 participants and employed five artists, three crew and three tour managers. The three Shows on the Go for 2014 were *Get Hypnotised!*, *Squaring the Wheel* and *Dust of Uruzgan*.



Government of **Western Australia**  
Department of **Culture and the Arts**



ABC  
Local Radio





### Get Hypnotised! The Matthew Hale Comedy Hypnosis Show

In 2014, *Get Hypnotised!* travelled 6,662km, performed to a total audience of 2,239 people in 16 communities and had an average of 140 people per performance. Seven workshops were held which attracted 186 participants.

Matthew turned the traditional hypnosis show on its head, highlighting the talents and creativity of the volunteers for big laughs instead of embarrassing them. Hypnotised volunteers were transported into bizarre car journeys, talking alien and unleashing talents they never knew they had.

Winner of three national comedy awards, Matthew regularly travels between Australia, Las Vegas and the UK and is no stranger to world media including BBC, ABC, *Today Tonight* and *Ripley's Believe It or Not*.

Produced by Matthew Hale, *Get Hypnotised!* employed three people over 32 days. It toured to:

Community	Local Presenter
Broome	Broome Civic Centre
Port Hedland	Town of Port Hedland
Pannawonica	Shire of Ashburton
Onslow	Shire of Ashburton
Paraburdoo	Karingal Neighbourhood Centre
Geraldton	Queens Park Theatre
Jurien Bay	Jurien Bay Community Resource Centre
Northam	Shire of Northam
Bruce Rock	Shire of Bruce Rock
Corrigin	Shire of Corrigin
Wickepin	Wickepin Community Resource Centre
Ravensthorpe	Ravensthorpe Regional Arts Council
Esperance	Esperance Civic Centre
Norseman	Shire of Dundas
Kalgoorlie	Goldfields Arts Centre
Southern Cross	Shire of Yilgarn

*“Awesome show. I had cramps the whole way through. Would do it again and again and again. Thanks for the laugh and night”*

*Audience member,  
Port Hedland*





*“The tour for our community was fantastic. We have not had Shows on the Go before. Trying something like this was an adventure for our CRC and would not hesitate to do again to give our community a taste of country art.”*

*Local presenter,  
Westonia Community  
Resource Centre*

### Squaring the Wheel

In 2014, *Squaring the Wheel* travelled 7,864km through seven regions and performed to a total audience of 2,711 people in 22 communities with an average of 108 people per performance. Eleven workshops were held which attracted 148 participants.

*Squaring the Wheel* combines circus, clowning, strange mechanisms and contraptions, puppetry, magic and music into an unusual thingamabobbish theatre extravaganza. Household items will never seem the same again as *Squaring the Wheel* demonstrates new and fun uses for everyday objects!

Winner of the Adelaide Fringe Award for Best Presentation for Children in 2013, *Squaring the Wheel* invites audiences to stay after the performance for an interactive demonstration of how the machines work.

Created and performed by Jens Altheimer and auspiced by Auspicious Arts Projects, *Squaring the Wheel* employed three people over 48 days.

*Squaring the Wheel* toured to:

Community	Local Presenter
Nedlands	University Theatres
Kwinana	Koorliny Arts Centre
Boddington	Boddington Community Resource Centre
Merredin	Cummins Theatre & Shire of Merredin
Thornlie	City of Gosnells
Northam	Shire of Northam
Tammin	Shire of Tammin
Westonia	Westonia Community Resource Centre
Southern Cross	Shire of Yilgarn
Kambalda West	Kambalda Cultural and Arts Group
Kalgoorlie	City of Kalgoorlie-Boulder
Ravensthorpe	Ravensthorpe Regional Arts Council
Bruce Rock	Shire of Bruce Rock
Kulin	Shire of Kulin
Wickepin	Wickepin Community Resource Centre
Narrogin	ArTS Narrogin
Wagin	Shire of Wagin
Harvey	Harvey Recreation & Cultural Centre
Coorow	Coorow Community Resource Centre
Newman	Newman Mainstreet Project Inc.
Paraburdoo	Karingal Neighbourhood Centre
Broome	Shire of Broome

*Jens Altheimer entertaining the St Mary's Broome school students in one of his workshops.  
Photo by Jenna Mathie.*



### Dust of Uruzgan by Fred Smith

In 2014, *Dust of Uruzgan* travelled 19,175km through seven regions and performed to a total audience of 988 people in 13 communities, with an average of 76 people per performance.

Fred Smith combined beautiful songs, stunning projected photographs by military and civilian photographers and humorous and touching stories in *Dust of Uruzgan*. A highly acclaimed album performed live with a two-piece band and based on his time in Afghanistan as a diplomat and singer/songwriter. *Dust of Uruzgan* tells the story of the 20,000 young Australians who, for the last eight years, have made a difference in the war-ravaged country of Afghanistan.

Produced by Fred Smith Productions, *Dust of Uruzgan* employed five artists over 31 days.

*Dust of Uruzgan* toured to:

Community	Local Presenter
Broome	Shire of Broome
Port Hedland	Town of Port Hedland
Exmouth	Shire of Exmouth & Exmouth Yacht Club
Carnarvon	Shire of Carnarvon
Cue	Shire of Cue
York	Shire of York
Pingelly	Shire of Pingelly & Lotterywest
Hyden	Hyden Community Resource Centre
Kalgoorlie	City of Kalgoorlie-Boulder
Esperance	Esperance Civic Centre
Jerdacuttup	Ravensthorpe Regional Arts Centre
Manjimup	Shire of Manjimup
Dunsborough	Dunsborough & Districts Progress Association

*“Such an amazing concert, talented artists and such a moving account of what so many Australians don’t know – thank you!”*

Claire Sobolewski,  
Port Hedland





# National Touring

The National Touring program offers Western Australian producers the opportunity to build a national profile and tour interstate.

Country Arts WA is the Western Australian representative of the Blue Heeler National Touring Network, an industry alliance for national performing arts touring support, facilitation and coordination across Australia.

The Blue Heelers manage the Cyberpaddock website and coordinate the biannual Long Paddock touring forums - where producers and presenters from around the country meet to refine proposals for touring productions within regional Australia. These mechanisms provide an accessible and sophisticated tour development system.

Country Arts WA delivered one national tour with Spare Parts Puppet Theatre's *The Deep*, based on the book by Tim Winton.

Country Arts WA also continued to represent the interests of regional Western Australian presenters through participation in the Performing Arts Touring Alliance (PATA). PATA is Australia's peak body for the performing arts touring sector. It is a cohesive and objective voice for government and key stakeholders, providing quality and informed strategic advice and policy.





## The Deep

*The Deep* travelled 13,777km across four states and performed to a total audience of 7,812 people in 18 towns with, an average of 217 people per performance.

Set in a typical seaside town on a hot summer day, this superbly crafted puppetry show transported audiences to a magical underwater world for an exhilarating adventure, with a friendly dolphin and a puppet cast of sea creatures as a young girl is challenged to overcome her greatest fear.

Based on Tim Winton's classic children's book, Spare Parts Puppet Theatre's *The Deep* is a breathtaking theatre experience the whole family can share.

The touring party offered audiences the opportunity to ask questions about puppetry and the show after the performance which was well received.

Produced by Spare Parts Puppet Theatre, *The Deep* employed five artists over 57 days.

*The Deep* toured to:

Community	Local Presenter	State
Portland	Portland Arts Centre	Vic
Ringwood East	Karralyka Centre	Vic
Nunawading	Whitehorse Centre	Vic
Preston	Darebin Arts & Entertainment Centre	Vic
Moonee Ponds	Clocktower Centre	Vic
Geelong	Geelong Performing Arts Centre	Vic
Upwey	Burrinja Cultural Centre	Vic
Wodonga	The Cube Wodonga	Vic
Newcastle	Civic Theatre Newcastle	NSW
Orange	Orange Civic Theatre	NSW
Tamworth	Capitol Theatre Tamworth	NSW
Wagga Wagga	Wagga Wagga Civic Theatre	NSW
Parramatta	Riverside Theatres	NSW
Devonport	Devonport Entertainment & Convention Centre	Tas
Launceston	Theatre North	Tas
Logan	Logan Entertainment Centre	Qld
Noosa	The J Noosa	Qld
Surfers Paradise	Arts Centre Gold Coast	Qld

*"Inspiring, uplifting, amazing – transcends the ages and generations."*

Audience member,  
Moonee Ponds





# CircuitWest Touring

CircuitWest is the state network of professionally managed performing arts venues across regional Western Australia. Country Arts WA maintains a strong working relationship with CircuitWest venues, ensuring that regional communities are serviced through both state and national touring strategies.

In 2014 Country Arts WA coordinated a state tour of *The Night Zoo* produced by Spare Parts Puppet Theatre on behalf of the CircuitWest network.



Government of Western Australia  
Department of Culture and the Arts



*“Thank you for bringing The Night Zoo to Geraldton. The puppets are truly magical and cute, so dignified in their movements, and it felt like a very animated place.”*

Queens Park Theatre

## The Night Zoo

*The Night Zoo* travelled 3,902km through four regions and performed to a total audience of 1,363 people in four communities, with an average of 123 people per performance.

Celebrating the remarkable friendship between animals and children, *The Night Zoo*, is written and directed by Michael Barlow and is about Jamie, a little girl who can only dream of owning a pet because her parents don't think there is enough room in their apartment. One night, as Jamie falls asleep, something magical happens when the animals of the city zoo come out to find her and invite her for a night of dancing in the park - as the sun comes up, the dream is fading fast, but there is one more surprise in store.

Produced by Spare Parts Puppet Theatre, *The Night Zoo* employed three artists over 14 days.

*The Night Zoo* toured to:

### Community

Port Hedland  
Geraldton  
Bunbury  
Mandurah

### Local Presenter

Town of Port Hedland  
City of Greater Geraldton  
Bunbury Regional Entertainment Centre  
Mandurah Performing Arts Centre



Opposite: *The Night Zoo* by Spare Parts Puppet Theatre. Photo by Michael Barlow.









# Regional Schools Touring

The Regional Schools Touring program aims to ensure that regional Western Australian schools have access to professional performing arts activities.

Country Arts WA works in partnership with Barking Gecko Theatre Company, Spare Parts Puppet Theatre, Yirra Yaakin Theatre and Buzz Dance Theatre to deliver the Regional Schools Touring program.

The program has focused on creating opportunities for the companies to develop stronger relationships with the communities to which they tour.

Country Arts WA plays a strategic role to ensure that the program provides inspiring performing arts experiences for regional schools audiences.

Collectively, the schools touring companies delivered 47 performances to 4,593 students, conducted 158 workshops to 2,960 participants and employed 23 artists and crew.

With the merger of Buzz Dance Theatre with STEPS Youth Dance Company, 2014 was the final year that Buzz Dance delivered its dance residencies under this program. We thank them for their extraordinary contribution to regional communities over the years. Future regional schools dance performances and workshops will be delivered by the new Contemporary Dance Company of WA.



Government of Western Australia  
Department of Culture and the Arts





### ***The Ballad of Pondlife McGurk by Barking Gecko Theatre Company***

Barking Gecko Theatre Company travelled 1,304km to seven communities delivering eight performances to a total audience of 668, averaging 83 people per performance and delivered two workshops to 58 participants. The tour employed an artist and a crew member.

*The Ballad of Pondlife McGurk* is uplifting and completely unforgettable theatrical work that beelines right to the centre of a child's universe, the schoolyard – with its fickle and faithful friends, bullies and defining moments.

Martin's the new kid at school among a sea of unfamiliar faces. Sharon's the class bully and she doesn't like Martin one bit. Then Simon McGurk comes along. He's wildly different to Martin, but they become the best of buddies. Then, one day, Martin does something that will poison their friendship forever.

Directed by renowned international director Gill Robertson *The Ballad of Pondlife McGurk* is an absorbing, funny and heart-felt tale about the fragile nature of friendship and performed by Marko Jovanovic.

School	Town	Region
Kirup Primary School	Kirup	South West
Brunswick Junction Primary School	Brunswick Junction	South West
Margaret River Montessori	Margaret River	South West
Bruce Rock DHS	Bruce Rock	Wheatbelt
Babakin Primary School	Babakin	Wheatbelt
Merredin College	Merredin	Wheatbelt
St Joseph's Catholic College	Northam	Wheatbelt

A Barking Gecko Theatre Company and Windmill Theatre co-production with Catherine Wheels Theatre Company and supported by Creative Scotland.

*“Totally captured the audience – brilliant. It achieved an emotional response from the children. We prefer an incursion because the cost of transport is not included.”*

*Sue Holden, Kay Kuzich,  
Kirup Primary School*







*“Lots for the eye to take in! They enjoyed the many character. The workshop was very much enjoyed by all who participated.”*

*Meekathara District High School*

### ***Moominpappa at Sea by Spare Parts Puppet Theatre***

Spare Parts Puppet Theatre travelled 3,132km to eight communities delivering nine performances to a total audience of 420 people and eight workshops to 251 students. The tour employed an artist and a crew member.

*Moominpappa at Sea* is based on the popular book by Finnish author Tove Jansson about the Moomins, a family of Moomintrolls.

Moominpappa has moved his family to a new home – a small rocky island, far out at sea! He is excited about starting his new job as the lighthouse keeper but what will the other Moomins get up to? And what secret does their new home hold? There is an adventure in store that’s for certain! *Moominpappa at Sea* excites young imaginations as Moominpappa and his family face the challenges of their new life with humour, courage and optimism.

The work was adapted and directed by Spare Part Puppet Theatre’s Associate Director Michael Barlow and performed by *FirstHand* graduate and Company Associate Bec Bradley.

Spare Parts Puppet Theatre returned to the Mid West and Gascoyne regions in 2014 building on relationships commenced in 2013 and also connecting with new schools in the region. A workshop making puppets from fruit and vegetables offered with the performance was very popular.

School	Town	Region
Mt Magnet District High School	Mt Magnet	Mid West
Meekatharra District High School	Meekatharra	Mid West
Leaning Tree Community College	Geraldton	Mid West
Useless Loop Primary School	Useless Loop	Gascoyne
Carnarvon Christian College	Carnarvon	Gascoyne
Chapman Valley Primary School	Chapman Valley	Mid West
Coorow Primary School	Coorow	Mid West
Cervantes Primary School	Cervantes	Wheatbelt





### ***Big Stretch by Buzz Dance Theatre***

Buzz Dance Theatre travelled 9,323km and delivered 130 workshops to 2,239 participants.

Big Stretch enriches the lives of Indigenous and non-Indigenous children living in remote and often disadvantaged communities, enriching their academic curriculum, igniting their imagination and building capacity for the future.

The program provides a holistic multi-arts workshop approach, supports the schools' curriculums and has the capacity to build communities through ongoing professional development of teachers.

A delightful addition to the program this year was the creation on a literacy based dance workshop facilitated by the dancers to mothers groups, play groups and pre-primary students across the Pilbara and Kimberley.

Produced by Buzz Dance Theatre, Big Stretch employed nine artists over four days and delivered dance workshops in:

<b>School</b>	<b>Town</b>	<b>Region</b>
Jack and Jill Playgroup	Broome	Kimberley
Kimberley Kids Early Learning Centre	Broome	Kimberley
Broome Senior High School	Broome	Kimberley
Derby High School,	Derby	Kimberley
City of Derby Library	Derby	Kimberley
Mawanjum Early Years	Derby	Kimberley
Halls Creek School	Halls Creek	Kimberley
Little Nuggets Daycare	Halls Creek	Kimberley
Yandeyarra Community School	Yandeyarra	Pilbara
Cook Point Playgroup	Port Hedland	Pilbara
Cassia Primary School	Port Hedland	Pilbara
JD Hardie Centre	Port Hedland	Pilbara
Hedland Senior High School	Port Hedland	Pilbara
Rose Nowers Early Learning Centre	Port Hedland	Pilbara
Newman Primary School	Newman	Pilbara
Newman Senior High School	Newman	Pilbara
Follow the Dream / Partnerships for Success Program	Newman	Pilbara
South Newman Primary	Newman	Pilbara
Waralong Community School	Waralong	Pilbara
Marble Bar Primary School and Library	Marble Bar	Pilbara
Marble Bar Library	Marble Bar	Pilbara







### **Culture 2.0 & Kep Kaatijin and Kaarla Katijin Yirra Yaakin Theatre**

Yirra Yaakin delivered a workshop and performance program, employing seven artists and three crew across the Pilbara region. With 31 performances to 3,505 people and 18 workshops to 412 participants.

The *Respect Yourself Respect Your Culture* Kaatijin double bill was a three week schools incursion program. The program included Kaarla Kaatijin and Kep Kaatijin (Kep meaning “water”, Kaarla meaning “fire” and Kaatijin meaning “to understand”), contemporary re-workings of Noongar dreamtime stories aimed at primary school students and the Culture 2.0 *Respect Yourself Respect Your Culture* workshop program aimed at high school students.

The shows were followed by question and answer sessions after each show with prizes awarded to all students who actively participated in these sessions.

The Culture 2.0 program explores young Indigenous and non-Indigenous people’s reactions to the question ‘what is culture?’, their relationship to culture at a personal and community level and how their individual sense of culture intersects with the broader definition of culture within their community and within the world at large.

School	Town	Region
<b>Kep Kaatijin &amp; Kaarla Kaatijin</b>		
Baler Primary School	Port Hedland	Pilbara
Se Cecillas Primary School	Port Hedland	Pilbara
South Hedland Primary School	Port Hedland	Pilbara
Marble Bar Primary School	Marble Bar	Pilbara
Nullagine Remote Community School	Nullagine	Pilbara
Tambrey Primary School	Karratha	Pilbara
Dampier Primary School	Karratha	Pilbara
Pegs Creek Primary School	Karratha	Pilbara
Baynton West Primary School	Karratha	Pilbara
Millars Well Primary School	Karratha	Pilbara
Karratha Primary School	Karratha	Pilbara
Onslow Primary School	Onslow	Pilbara
Pannawonica Primary School	Pannawonica	Pilbara
<b>Culture 2.0</b>		
Hedland High School	Port Hedland	Pilbara
Karratha High School	Karratha	Pilbara



## Share the Risk

Share the Risk is a guarantee-against-loss program designed to assist regional Western Australian communities to present professional performing arts events by underwriting some of the costs. The fund covers losses associated with unexpected events such as bad weather, a change in farming schedules or an unforeseen community occurrence, up to an agreed amount.

In 2014, requests to the Share the Risk fund totalled \$20,344. Of the total committed by the Touring Assistance Panel, \$8,963 of this amount was drawn on by applicants.







In 2014 Share the Risk supported:

### Ord Valley Country Women's Association

#### *CWA Family Bush Dance* | Kimberley

An annual fun, family oriented event for all to enjoy in the wet season, with country music dance band Murphy and Friends.

Committed: \$3,882      Required: nil

### Ravensthorpe Regional Arts Centre

#### *Flak* | Goldfields-Esperance

Michael Viethch takes on the role of former airmen to tell their true stories from World War 2.

Committed: \$2,027      Required: \$1,528

### Coorow Community Resource Centre

#### *Squaring The Wheel* | Mid West

A family show inhabited by quirky contraptions and bringing together circus skills, puppetry, magic, wacky mechanisms and unexpected music.

Committed: \$1,350      Required: \$957

### Ravensthorpe Regional Arts Centre

#### *Squaring The Wheel* | Goldfields-Esperance

A family show inhabited by quirky contraptions and bringing together circus skills, puppetry, magic, wacky mechanisms and unexpected music.

Committed: \$1,430      Required: \$1,430

### Newman Mainstreet Arts Project

#### *Squaring The Wheel* | Pilbara

A family show inhabited by quirky contraptions and bringing together circus skills, puppetry, magic, wacky mechanisms and unexpected music.

Committed: \$1,350      Required: \$1,350

### Hyden Community Resource Centre

#### *Dust of Uruzgan* | Wheatbelt

The *Dust of Uruzgan* combines songs, humour and sensitive narrative with a stunning set of projected photographs from Afghanistan taken by military and civilian photographers.

Committed: \$1,750      Required: Nil

### Ravensthorpe Regional Arts Centre

#### *Dust of Uruzgan* | Goldfields-Esperance

The *Dust of Uruzgan* combines songs, humour and sensitive narrative with a stunning set of projected photographs from Afghanistan taken by military and civilian photographers.

Committed: \$1,750      Required: \$1,487

### Albany Choral Society

#### *Faure's Requiem & More* | Great Southern

A performance of *Faure's Requiem* and extracts from Karl Jenkins' *The Armed Man*, and other works in tribute to anniversary celebrations honouring the ANZACs who sailed from Albany in November 1914.

Committed: \$6,805      Required: \$2,211



# Louder Contemporary Music Touring

The Louder Contemporary Music Touring Program aims to encourage the development of original contemporary music touring in regional Western Australia. Country Arts WA works with contemporary music touring organisations to develop projects that achieve developmental outcomes for regional communities, with a focus on developing musicians, audiences and venues.

## Desert Feet Inc

\$17,500

### The Desert Feet Tour

Touring to the Pilbara and Kimberley regions, this tour employed seven artists and five crew, delivered eight workshops, four recording sessions and 10 performances to over 1,600 people.

The Desert Feet Tour performed concerts and delivered workshops about music video making, multiple instrument playing (including viola, theremin, slide guitar, cello and violin), developing concentration, patience, communication, confidence and empowerment. Kiwirrkurra Band and Olive Kankawa Knight recorded music and produced video clips with Desert Feet. An impromptu stage performance/drumming workshop was introduced at Balgo where participants in turn performed *Wipeout* on drums whilst the Desert Feet musicians continued to play which proved popular.

Artists on tour included Damien Thornber, Emily Minchin, Justine Thornley, Leo Ollivier, Olive Kankawa Knight, Kiwirrkurra Band, Springside Reggae, Nookanbah Band, Ganinya Band, Wirrimanu Cliffside Reggae, Kingfisher Cliff, Now or Never Band, Lost Boys, Dark Crystal, William Shaw, Rough and Ready, Nyirripi Band, Balgo Band, Check It Out Band, Yiyili Band, Sonic Band, Rock Eagle, Youngubella Band, Ngalingkadji Band and Lajamanu Teenage Band.

The Desert Feet toured to:

#### Community

Kiwirrkurra

Balgo

Wangkatjungka

#### Region

Pilbara

Kimberley

Kimberley

*"Music is as important as food to the Martu (people), I think your program is not just music, its saving lives."*

Leslie Dallas Sushames  
(HACC Kunawarritji)



Government of Western Australia  
Department of Culture and the Arts





# Regional Arts Development



Regional Arts Development has a major focus on delivering devolved funding to the regions for projects that support essential arts development initiatives like skills development, youth leadership and arts employment. The team also provide key arts-related resources and information to the regions and are often discussing opportunities with our members and regional people.

A major highlight for the year was the delivery of The Exchange – a two day forum in Fremantle for facilitated conversations with individuals who represent regional arts organisations. This was a prime example of arts development projects that are undertaken by the team that work on building the capacity of regional artists and arts workers.

In 2014 Country Arts WA administered several funds including the Commonwealth Government's Regional Arts Fund, Healthway's Drug Aware YCulture Regional and State Government's Core Arts Fund working closely with applicants to develop the best possible arts outcomes for their community.

While on field trips in regional Western Australia the Regional Arts Development team had one-on-one meetings with people to discuss funding and resources and held four regional information forums in Port Hedland, Broome, Bunbury and Margaret River. These forums were in collaboration with The Australia Council and the Department of Culture and the Arts.

The team responded to 436 enquiries across the year regarding funding and spent of 139 hours assisting community representatives in developing their applications.

149 applications were received to a total request of \$818,330. From the total applications, 61.74% were successful to a total amount of \$493,143. Each of the nine Western Australian regions received funding for at least one organisation or individual in 2014.

Significant statistics regarding the 149 applications that were received and assessed in 2014:

- \* \$818,330 was requested by organisations and individuals
- \* \$493,143 was approved and distributed (this means 60% of the total ask was supported)
- \* \$191,094 in unmet need, meaning applications which should have been supported either to the full amount or at all but there wasn't enough funds
- \* 497 artists were directly employed through the successfully funded projects through devolved funding.



# Core Arts Fund

The Core Arts Fund program supports regional organisations in their endeavours to build creative, strong and healthy regional communities in Western Australia through coordinating diverse arts and cultural activities.

The Core Arts Fund provides baseline financial support to foster the development of Western Australian regional organisations that undertake an annual program of arts and cultural activity that engages a broad cross-section of their community, have partnerships with local government and community groups, and demonstrates innovation. These organisations' programs use arts and culture to help define a sense of identity for local communities.

Organisations are currently funded on a triennial contract under the following categories:

## **Peak Funding – up to \$40,000**

Peak Funding is offered over a three-year contract period for larger arts organisations with a demonstrated track record of strong management and successful arts program delivery. Peak organisations have a recognised and established role within the community and are advocates for the arts by providing leadership, resources and support to the broader community. Peak organisations demonstrate an innovative approach to program development and have a long term vision for the organisation.

## **Key Funding – up to \$15,000**

Key Funding is offered over a three-year contract period to support arts organisations with a demonstrated track record of strong management and successful arts program delivery. Key organisations work towards consolidating their role within the community, creating partnerships and supporting innovative and local artwork.

## **Vital Funding – Up to \$10,000**

Vital funding is offered over a three-year contract period to support arts organisations that have an established annual program of arts activities and are working towards developing their role within the community and creating partnerships.

### **In 2014 through the Core Arts Fund organisations:**

- \* 1,101 regional artists were employed
- \* 1,611 artists in total were employed (this means 68% of artists paid were regional!!)
- \* 207 partnerships were maintained or forged
- \* \$4,363,272 was leveraged from the \$269,989 that was distributed through this program
- \* Funding went to eight of the nine regions, and the Indian Ocean Territories
- \* Over 30,000 people participated in their programs
- \* Over 210,000 people were audience members to their programs.

Applications are assessed by the Regional Arts Development Panel in late 2013 and the organisations have secured funding from 2014-2016.



Government of **Western Australia**  
Department of **Culture and the Arts**







## Peak Arts Organisations

### Arts Margaret River | South West

**\$91,191**

Arts Margaret River enhances and enriches the quality of lives in the South West by showcasing, facilitating, supporting and promoting high quality performing, visual, literary and cinematic arts. Their sincere engagement in several artforms ensures they can cater to a wide cross-section of the population, from the visual arts at the FoamLust exhibition that coincides with the Margaret River Pro to classical music at the Australian Chamber Orchestra performance. The highlight every year is the Readers and Writers Festival, which in 2014 attracted Graeme Simsion (*The Rosie Project*) and Nick Carroll (biographer on surfer brother Tom Carroll) and hosted more than 1000 students from local primary schools through their youth program.

### Denmark Arts Council | Great Southern

**\$129,888**

Denmark Arts is a leader in regional arts practice as an engaged, sustainable and vibrant arts organisation in the Great Southern. In 2014 they delivered their two significant regional festivals Brave New Works and Denmark Festival of Voice with aplomb and raised the bar of quality local handcrafted goods at the Denmark Arts Markets. They seized an opportunity to host Tenzin Choegyal and the Monks of Tibet which complemented their artistic and culturally diverse program for the year. They also commissioned and delivered professional development training for community artists through a workshop series resulting in five of nine projects being brought to fruition at Brave New Works.

### Esperance Community Arts | Goldfields – Esperance

**\$129,888**

Esperance Community Arts is committed to building a strong network between arts organisations and other community groups in the region. It successfully maintains a community access gallery and shop as well as delivers a range of inclusive arts programs over the year. 2014 was the inaugural year for Larger Than Life - a community arts festival held over two days in May with live bands, open mikes, sculpture prizes, markets and workshops. It provided the opportunity for Esperance artists, hobbyists, groups or organisations to showcase their artistic talent and come together. Over 30 local community groups and around 500 participants and volunteers were actively involved as well as an estimated 2000 attendees.

### Vancouver Arts Centre | Great Southern

**\$111,000**

The Vancouver Arts Centre is the focal point for arts experiences in Albany and is the only facility dedicated to the delivery of an inclusive, diverse arts program for all sectors of the community across all art forms. Vancouver Art Centre's strength is in its vibrant exhibition program which, in 2014, included Ripples in the Pond. Curated from private and public collections held in the Great Southern, the exhibition examined the influence of the Carrolup Style on past and present Noongar artists. A major highlight for the year saw the Vancouver Arts Centre co-present *My War?* as part of the ANZAC Albany official program of events. The *My War?* youth performing arts experience and installation was inspired by conversations with veterans and provoked a critically engaging view of war, through examining its influence on popular culture.



### Arts and Culture Christmas Island\* | Indian Ocean Territories

**\$120,000\***

Arts and Culture Christmas Island is the peak arts body in the Indian Ocean Territories and provides access to quality arts and culture which significantly enhances regional lifestyle and the health and wellbeing of the community. Arts and Culture Christmas Island utilises the skills of local artists for its program of exhibitions, workshops, dance and music, which is supplemented with visiting artists. A major project for 2014 has been the continued work on the intricate mosaic seat which artistically reflects the unique natural environment of the Island and will be a permanent public art piece in the Tea Gardens Precinct.

\*Arts and Culture Christmas Island are supported through the Federal Government via the Department of Infrastructure and Regional Development.

### Key Arts Organisations

#### Ravensthorpe Regional Arts Council | Goldfields – Esperance

**\$45,000**

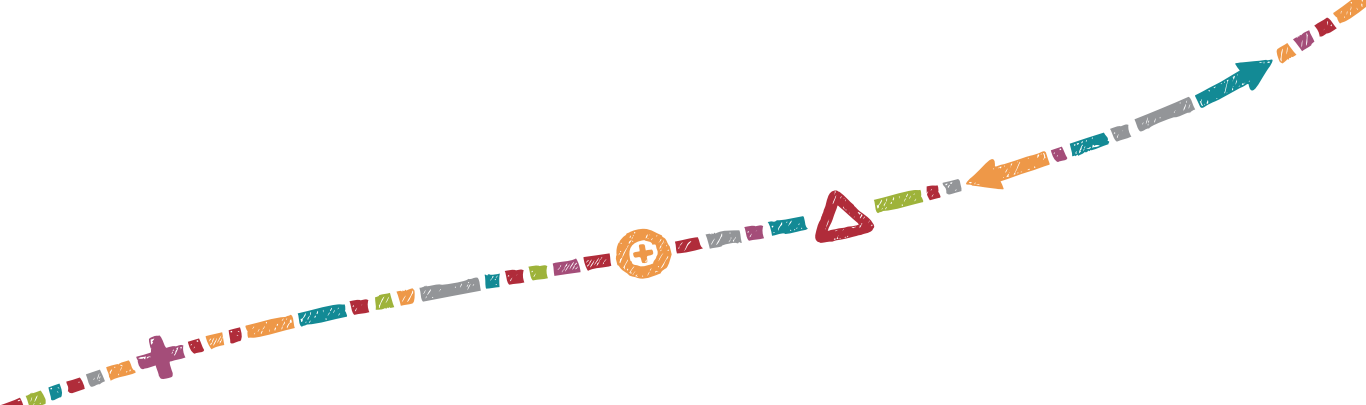
Ravensthorpe Regional Arts Council is a leading arts and cultural organisation situated in the Goldfields-Esperance town of Ravensthorpe. The organisation delivers a diverse and full annual program of arts and cultural activities including presentation of professional performing arts events, the creation of community events and support for artists and arts groups across all art forms. Highlights for 2014 have included the successful Pink Threads Portraits project that was delivered alongside a presentation of Calendar Girls and the successful community collaboration project, *Homespun* during the Regional Arts Australia Summit: Arts & Edges.

#### ARtS Narrogin | Wheatbelt

**\$33,000**

ARtS Narrogin is a dynamic and active arts organisation based in the Wheatbelt town of Narrogin. It is dedicated to supporting and promoting arts, culture and entertainment across the region, delivering an annual program of activities and events. ARtS Narrogin continued to strengthen and develop new partnerships throughout 2014 with a particular focus on reaching younger community members. Major successes for the year included the Dryandra Country Art, Food and Wine Trail and purchase of 32 ukuleles for community use with support from Lotterywest. In addition, ARtS Narrogin successfully remounted the remarkable community arts project *WILD! Flowers from the Bush* at the Regional Arts Australia Summit: Arts & Edges.





## Vital Arts Organisations

### Northampton Old School | Mid West

\$30,000

Based in the Mid West region, Northampton Old School have continued to successfully deliver a robust arts and cultural program throughout 2014. The organisation was established in 2006 and has provided the community with a diverse and engaging program across multiple artforms, developing opportunities for artists, young people and community members. Through 2014, Northampton Old School successfully delivered a School Holiday workshop program, a men's *Creative Welding* project, young people's *Tapping Sticks* project amongst many others. Major 2014 highlights included involvement with the Kalbarri Zest Festival and an exhibition of the Tapping Sticks in Perth to a national audience at the AWESOME Festival.

### Theatre Kimberley | Kimberley

\$30,000

Leading arts organisation Theatre Kimberley deliver a broad range of activities throughout the Kimberley region that enrich and support wellbeing through community engagement. Using arts as a platform the organisation teaches highly transferable skills, provides training and career pathways to artists and facilitates wider understanding of the arts. The annual program for 2014 included many highlights such as the Train the Trainer program as well as delivery of the Act-Belong-Commit Dragon Fly Outreach program to Bidyandanga, Fitzroy Crossing, Looma and Halls Creek communities. Theatre Kimberley completed a tour of the highly successful production *Staircase to the Moon*.

### Exmouth Cultural Arts Centre | Gascoyne

\$30,000

Exmouth Cultural Arts Centre is a leading arts and cultural organisation based in the Gascoyne region dedicated to promoting and developing community participation and enjoyment of the arts. The organisation provides the community with use of the centre's facilities for artistic expression. Exmouth Cultural Arts Centre delivered numerous projects throughout 2014 including the Whaleshark Festival Float Parade, workshops across various art forms such as portraiture, music notation, mixed media, puppetry, sculpture and children's jewellery and craft. The organisation, held a Flickerfest short film festival and in collaboration with Gascoyne in May artists, developed sculptures and puppets for a street parade as part of the Whaleshark Festival.

### Country Music Club of Boyup Brook | South West

\$30,000

The Country Music Club of Boyup Brook is a well established arts organisation providing and supporting arts and cultural activities across South West region. The organisation has continued to grow and expand their innovative annual program of events and activities providing opportunities and support for all people to engage in the arts as well as providing pathways to support established and emerging artists. The key event for this organisation each year is the acclaimed Country Music Festival, delivering another highly successful festival over five days in 2014. As well as this major festival, Country Music Club of Boyup Brook delivered an annual program which included a Country Music Boot Camp, developing the skills of emerging musicians and artistic development workshops led by professional artists.

### Nannup Music Club | South West

\$30,000

Nannup Music Club are a community based arts organisation that coordinate a number of events and activities focused on promoting traditional, contemporary and multicultural music, dance and arts including the Nannup Music Festival. During 2014 the Nannup Music Club successfully delivered the 25th annual Nannup Music Festival attracting over 7000 visitors and engaging over 80 artists. In addition, highlights for 2014 included the *Ukulele Convergence*, a home gathering of ukulele players from across the state and participation with the *Nannup Flower and Garden Festival*.



## The Exchange

The Regional Arts Exchange was a two day open space forum in Fremantle held on 27 and 28 February 2014. Eleven individuals representing nine not-for-profit regional arts organisations attended.

The Exchange provided networking opportunities and development through facilitated discussions and participant led open space forums. In a highly curated forum with attendees representing part of a diverse industry, the forum allowed for practice-based issues to be discussed with a similar level of understanding.

Country Arts WA aimed to capture the unique experiences of each organisation through a facilitated process, which allowed other organisations to develop and learn from, with participants tackling issues surrounding their practices.

The discussions chosen by the participants were

- \* Engaging diversity
- \* Viability and sustainability
- \* Communicating the value of the arts
- \* Shared programs and resources
- \* Arts as a transformative tool
- \* A set of protocols for external groups or individuals wanting to deliver a project in a regional town (drafted)

Given the nature of an open space forum, and the heavy thought required, the discussions were interspersed with formal presentations from the Department of Culture and the Arts on their Regional Action Plan, Curtin University on their Work Integrated Learning Project, Carina Lauder from the RAC and Lisa Rowley from the Rowley Foundation, who discussed alternate funding opportunities.

Alongside the program was an IT Specialist, who assisted with any technical question and provided one on one training in digital technologies.

*"I found it useful to be able to discuss matters in a small group with the conversation going in the directions in which you are interested."*

*Participant*



*The Regional Art Exchange attendees. Photo by Lisa Rowley.*







# Drug Aware YCulture Regional

Drug Aware YCulture Regional is a funding program for young people aged 12 to 26, living in regional Western Australian communities, to actively create, plan, manage and deliver their own arts projects.

Drug Aware YCulture Regional is open to all young people developing community arts projects across all art forms such as music, theatre, performance, new media, filmmaking, visual arts, urban art, writing and dance.

This fund continued in great demand in 2014, with 14 applications supported totalling \$60,960.

Drug Aware YCulture Regional is delivered through a partnership between Healthway, Country Arts WA, and the Drug and Alcohol Office with the Drug Aware campaign.

## Drug Aware YCulture Regional Panel

Drug Aware YCulture Regional offers the opportunity for young people living in regional Western Australia to become panel members. The Regional Arts Development Officer and other panel members mentor new trainees with their assessment and feedback of Drug Aware YCulture Regional applications and acquittals. In 2014 the Drug Aware YCulture Regional panel had representation from the Pilbara, Peel, Great Southern, South West, Gascoyne, Wheatbelt and Goldfields-Esperance regions.

Volunteering as a Drug Aware YCulture panel member offers young people a greater understanding of assessment panels and funding processes. Moreover it further develops communication skills and an awareness of artists working in regional Western Australia and the communities actively involved in youth arts. This is often a springboard into a potential career path in the arts.

### Thank you to the following young people for being on the 2014 Drug Aware YCulture Regional Panel:

Stephanie Leca | *Gascoyne*

Kellie Aberg | *Peel*

Caitlyn Edwards | *Goldfields-Esperance*

Sofie Lines | *Great Southern*

Curtis Taylor | *Pilbara*

Daniel Adams | *Goldfields-Esperance*

Kaitlyn Seymour | *Great Southern*

Renae Geddes | *Wheatbelt*

Hannah Chambers | *South West*

Drug Aware YCulture Regional is funded by Healthway to deliver the Drug Aware message.



[www.drugaware.com.au](http://www.drugaware.com.au)

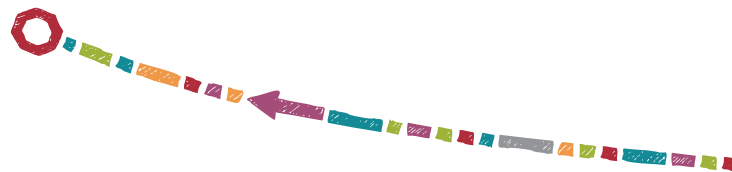






Images from top: Drug Aware 'Picture This' mural unveiling, Brunswick Junction. Photo by Emma Clifton-Gillett. Drug Aware Dance Workshops Mount Magnet 2014 project, dancers with Urban Youth Crew filming their at Granites. Photo by Lydia Redpath.





## 2014 Successful Applicants

### ***Drug Aware Glow Art | Wheatbelt | Auspiced by Jurien Bay Community Resource Centre*** **\$4,000**

Young people in Jurien Bay engaged local professional artists to run a series of glow in the dark body painting workshops. The techniques and skills developed were incorporated into a flash dance performance under black light at the Daze Festival 2014.

### ***Drug Aware Yangpalaku Mural | Kimberley | Auspiced by Wirrimanu Aboriginal Corporation*** **\$6,000**

The Drug Aware Yangpalaku Mural, a community project for young people from the remote community of Balgo, engaged artists from the Warilayirti Art Centre and graffiti artists from Melbourne. The artists worked with young people for five days developing skills in visual arts and culminating in the creation of a mural.

### ***Drug Aware Dance Workshop | Mid West | Auspiced by Shire of Mount Magnet*** **\$4,000**

Young people in the community of Mount Magnet engaged Urban Youth Crew to run a series of workshops to develop young peoples skills in hip hop dance. The project culminated in a performance to the entire community at the Town Hall.

### ***Drug Aware Bruce Rock Youth Fest 2014 | Wheatbelt*** **\$3,350** ***Auspiced by Bruce Rock Community Resource Centre***

In celebration of Youth Week 2014, young people in Bruce Rock engaged the expertise of professional artist Sarah Kilgariff to deliver workshops in visual arts. The works created by participants were exhibited publically alongside a community celebration.

### ***Drug Aware Picture This | South West*** **\$4,000** ***Auspiced by Brunswick Junction Community Resource Centre***

Professional artist Andrew Frazer delivered workshops upskilling young participants in urban art through the project Drug Aware Picture This. Techniques and skills including planning, designing and painting were developed and directly utilised by the young people with the painting of a large mural it town.

### ***Drug Aware Dare 2BU Youth Event | Wheatbelt | Auspiced by Shire of Goomalling*** **\$4,000**

Young people in the town of Goomalling engaged professional artist Dan Duggan to deliver workshops developing skills in the basic principles of urban art. Through the workshops participants created their own artworks that were publically displayed to the community.

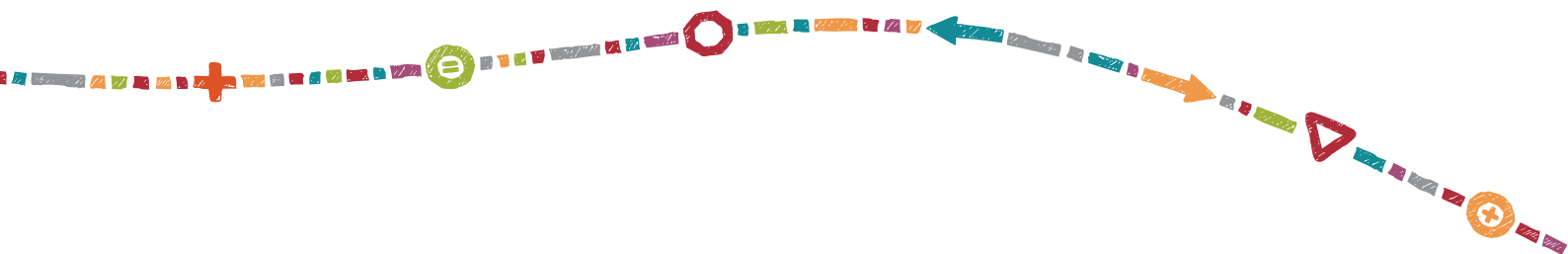
### ***Drug Aware Street Union Dance Workshop | Peel*** **\$4,000** ***Auspiced by Boddington Community Resource Centre***

Street Union hip hop dance teachers travelled to Boddington to deliver workshops to young people developing a broad range of dance techniques including hip hop, robotic and dub step. The workshops culminated with a performance to the community showcasing the skills developed.

### ***Drug Aware Beauty and the Street | Mid West*** **\$4,000** ***Auspiced by Arts and Cultural Development Council (ACDC) of Geraldton Inc***

Professional Urban Artist, Drew Straker delivered workshops for young people in the community of Geraldton developing skills in aerosol art. Participants created their own art pieces which were exhibited to the community. The young coordinators continued to be mentored by Drew and delivered a second phase of the project by leading the young participants to paint a mural design.





***Drug Aware 'Paint My feelings' Project | Gascoyne | Auspiced by Carnarvon Festival Inc \$6,000***

Young coordinators from the Gascoyne region engaged visual artist and performance painter, Phil Doncon to deliver a series of workshops for young people in the community of Carnarvon and Mungullah as part of the 2014 TropiCOOL Festival.

***Drug Aware Art in the Park | Wheatbelt | Auspiced by Shire of Chittering \$3,610***

Young people with a desire to develop skills in graffiti art engaged artist Sarah Kay to deliver workshops focused on teaching various techniques associated with urban art.

***Drug Aware Community Mental Health Day | South West | Auspiced by Edith Cowen University Guild \$4,000***

Young people in the South West community of Bunbury engaged Music Feedback to deliver a workshop aimed at developing skills in song writing techniques, providing knowledge needed to write an original song. The workshop was held as part of a full day community celebration for Mental Health week.

***Drug Aware Happy Bunbury Film Project | South West | Auspiced by City of Bunbury \$4,000***

Young coordinators in Bunbury engaged Geo Media Interactive to deliver workshops to young people of all abilities developing skills in film production. The workshops created a Bunbury specific video clip of the Pharrell Williams song 'Happy'. The final video clip was showcased to the community on the International Day of People with a Disability.

***Drug Aware Junkadelic Project | Pilbara | Auspiced by Town of Port Hedland \$6,000***

Drug Aware Junkadelic project engaged music group Junkadelic to deliver workshops teaching young people how to create musical instruments from recycled material. The workshops culminated with a showcase performance with the instruments at the Portbound Festival 2014.

***Drug Aware Spray the Grey Youth Fest | Wheatbelt \$4,000***

***Auspiced by Inspirational Community Arts Network (ICAN)***

Young people from the community of Jurien Bay engaged artists Graphite Crew to deliver workshops in urban street art. The urban art workshops culminated with a painting of the community skate park whilst a youth festival was held around the space. As part of the festival hip hop dance performances and workshops were led by Urban Youth Crew.







# Connections – Artistic Practice and the Internet

Country Arts WA and Edith Cowan University (ECU) formed a partnership to offer an introductory one day workshop for regional artists and artswriters. *Connections – Artistic Practice and the Internet*, is designed for artists and artswriters who have never used social media, or who have been wondering what all the fuss is about.

The workshop introduced concepts and techniques that underpin using the web to showcase work, grow audiences, meet practitioners and explore working collaboratively.

In 2014 the one-day workshops were led by Dr Paul Jackson, a senior IT lecturer at ECU working in partnership with Berlin's University of the Arts and WAAPA and Country Arts WA's Marketing Officer, Matt McEwen.

Initially regional and remote organisations were invited to apply to Country Arts WA to have the workshop delivered locally in their area, however, the cost of presenting the workshops in regional centres proved prohibitive.

This resulted in Country Arts WA working laterally to find a solution to this problem by hosting the workshop when many potential workshop participants would be available in one location.

Two workshops were held in 2014, one in March after The Exchange in Fremantle, and another in October during the Regional Arts Australia Summit: Arts & Edges in Kalgoorlie.

All participants reported the value of the workshop in providing them with new skills and insights into new media in their working life.



Australian Government  
Regional Arts Fund

# Regional Arts Fund

The Regional Arts Fund (RAF) supports sustainable cultural development in communities across regional, remote and isolated Australia.

A key focus of this fund is to support creative and innovative arts and cultural activity in regional, remote and very remote/isolated communities. Participation in and access to cultural activities contributes to the sustainable cultural, social and economic capacity and wellbeing of individuals and communities.

The Community Grant Programs made possible through the Regional Arts Fund (RAF 6) in 2014 include the following funds:

- \* Partnership Fund
- \* Project Fund
- \* Cultural Worker Position
- \* Quick Response Grants

## Regional Arts Fund Panel

The Regional Arts Fund Panel is made up of members from across the state and provides diverse coverage of Western Australian arts. The Panel members have specialist expertise in one or more artforms and possess an informed opinion of community needs, response and interest. This ensures that we achieve a broad, balanced and fair representation of artforms, genders and regions as well as arts management and community interests, including those of multicultural and Indigenous Western Australia.

**The following individuals represent the pool from which the Panel is formed for RAF Assessments.**

Trish Barron | *Pilbara*

Charmaine Green | *Mid West*

Alex Mickle | *South West*

Sonya Dye | *South West*

Rachel McKenzie | *Mid West*

Virginia Jealous | *Great Southern*

Gwen Knox | *Kimberley*

Ushan Boyd | *Kimberley*

Indra Geidans | *Great Southern*

Barbie Greenshields | *Great Southern*

Cathy Cummins | *Kimberley*

Brittany Moxham | *Pilbara*

Ross Becket | *Goldfields-Esperance*

Kathleen Toomath | *Perth*



Australian Government  
Regional Arts Fund







## Project Fund

The Project Fund is designed to assist Western Australian regional, remote and very remote communities and artists to partner with professional artists and cultural leaders.

Successful projects are high quality arts projects and activities that develop cultural networks and build capacity for long term benefits and increase professional development. Projects should be accessible and inspiring, as well as rewarding for both the artists and the community.

Country Arts WA delivered two rounds of the Project Fund in March and August 2014. Across these rounds 17 applications were approved to a total of \$225,960.25; 15 applications through the Community category, and two through the Individual category.

Project Fund categories:

**Individual - up to \$10,000 or up to \$15,000 above the 26th parallel**

This is for individual artists or arts workers from regional and remote Western Australia who have identified a unique professional development opportunity.

**Community - up to \$15,000 or up to \$20,000 above the 26th parallel**

This is for not-for-profit organisations or local governments from regional and remote Western Australia to employ professional artists in a creative arts project that engages their community.

## Project Fund Successful Applicants

March Round 2014

### COMMUNITY CATEGORY

**Waringarri Aboriginal Arts**

**\$14,000**

*The Skills-Share Arts Project | Kimberley*

Waringarri Aboriginal Arts will deliver design development workshops to create two public art installations. The project will focus on cross-cultural and inter-generational community engagement with senior Aboriginal artists and emerging artists leading the workshops.

**Kimberley Aboriginal Law and Cultural Centre**

**\$20,000**

*Kimberley Aboriginal Law and Cultural Centre 2014 Regional Cultural Festival | Kimberley*

The Kimberley Aboriginal Law and Cultural Centre will be holding its eighth Regional Cultural festival. A celebration of Kimberley Aboriginal dance, art, politics and culture, it will be staged in the remote Jarlmandangah Burru Community in the West Kimberley.

*The Colour of Ritual - Many hands make Goddess Kali in Kalbarri. Photo by Lisa Currie.*

*Opposite page: The Colour of Ritual, The Bonfire burns as Goddess Kali glows in Kalbarri. Photo by Samille Mitchell.*



**Marninwarntikura Women's Resource Centre**

**\$18,300**

***Lurpungu Animation Project | Kimberley***

Marninwarntikura Women's Resource Centre will engage Lynley Nargoodah to run animation workshops in the creation of an animation series depicting her Grandmother Julia Lawford's Walmajarri story 'Lurpungu' for community members of Fitzroy Crossing.

**Pride Midwest Inc.**

**\$14,995**

***Finding our Wings | Mid West***

Pride Midwest will establish an intensive artist-in-residence project to provide professional development for Mid West circus artists. Emerging artists will learn new techniques, while established artists will gain invaluable production, performance and directorial skills, culminating in a public performance.

**Kalbarri Development Association**

**\$15,000**

***The Colour of Ritual | Mid West***

Kalbarri Development Association will deliver a series of workshops to a broad cross section of the community to develop skills in various art forms including aerial, dance and puppet making led by professional artists. The project themes will draw inspiration from the cultures of Indonesia, India and Sri Lanka. The project will culminate in a celebration and performances during the Kalbarri Zest Festival 2014.

**Home and Community Care Network Warren Blackwood**

**\$15,000**

***Heart and Soul South West Dance Project | South West | Auspiced by Shire of Manjimup***

Home and Community Care Network Warren Blackwood will develop a quality dance troupe and production for people with disabilities across the South West region. Participants will be trained by accomplished, registered dance teachers and will learn skills across a variety of dance and music styles.

**Pathways Southwest Inc.**

**\$4,700**

***Resilience Workshops | South West***

Pathways Southwest will partner with local mental health service providers and professional artists to deliver a series of workshops developing skills across various art forms for people suffering from mental illness.

**Bunbury Regional Art Galleries**

**\$5,152**

***Talking Walls; An Exploration into Creating Murals | South West***

Bunbury Regional Art Galleries through the City of Bunbury will engage professional urban artists to run workshops for young people as part of the Re.Discover Bunbury street art event. The workshops will focus on skills development with urban art and will culminate in a mural to be exhibited at Bunbury Regional Art Galleries during Re.Discover Bunbury 2015.

**Southern Forest Arts**

**\$11,490**

***Forest Rhythm | South West***

Southern Forest Arts will engage regional musician/artist Peter Keelan to facilitate a multi-arts skills development opportunity for the community through five week long residencies focusing on the creation of an interactive sound sculpture for Understory-Art in Nature. The project will culminate in a community concert featuring performances of participants' compositions.







**August Round 2014  
COMMUNITY CATEGORY**

**Gascoyne in May** **\$15,000**

***Architects of Spectacle | Gascoyne***

This project will lead community artists from across the Gascoyne to create interactive, iconographic festival spectacles that will build on and expand skills. Lead artists from each of the five Gascoyne communities will be supported by Karen Hethey to develop and deliver cross regional street theatre and gigantic puppetry in preparation for the Gascoyne in May Festivals in 2015.

**Jalaris Aboriginal Corporation** **\$15,000**

***Picturing Wellbeing | Kimberley***

A photographic and digital media project working with a group of young Indigenous Australian peoples from Derby and Mowanjumb. Two professional artists will help to create photographs and digital media works expressing experiences of wellbeing, and develop new skills in digital media and art-based research.

**Tjarlirli Art** **\$15,000**

***Our Communities - Our Stories | Goldfields-Esperance***

An integrated community arts project using art making, storytelling and local histories to create a compelling body of artworks. These works will be used for both a local and a national exhibition. The project links the artists from six leading Aboriginal art centres in a project that will record and document the personal and communal histories of the Ngaanyatjarra communities.

**Arts Margaret River** **\$15,000**

***Margaret River Readers and Writers Festival | South West***

The seventh annual Margaret River Readers and Writers Festival themed Seasons, brings talented authors of international and national standing to Margaret River to run a series of talks and workshops for the public and for school aged children. The festival is held annually in May and aims to attract visitors to stay and appreciate the beauty of the region.



**Country Music Club of Boyup Brook**  
**Musicians Headquarters | South West**

**\$7,950**

This creative project engages with the community and artists from regional and remote Western Australia, with an opportunity to engage, develop imagination and innovate. This project aims to contribute to artistic development, experience and public value of the Western Australian arts community.

**Southern Edge Arts**  
**The Dreaming Hill | Great Southern**

**\$15,000**

*The Dreaming Hill* is a collaboration with the WA Youth Theatre Company (WAYTCO) designed to build the theatrical capacity of young people living in the Great Southern region. Young actors will learn modern collaborative processes in theatrical creative development and develop the skills essential for professional acting, applying these skills to the development of the original play *The Dreaming Hill*.

**INDIVIDUAL CATEGORY**

**Amanda Firenze Pentney**  
**Stepping Up | Pilbara | Auspiced by Hedland Arts Council (HARTZ)**

**\$11,873**

Print Making artist, Amanda Firenze Pentney will undergo a program of professional development as an emerging artist to develop skills, knowledge and confidence within her practice. Amanda will have the opportunity to train with a professional artist, which will result in her first solo exhibition. Amanda will also receive marketing advice, peer support and branding as well as undertake a residency program.

**Olive Knight**  
**Walmatjarri Stories Project | Kimberley | Auspiced by Desert Feet Inc.**

**\$12,500**

Musician Olive Knight will undertake a program of professional development through recording a full-length album in state of the art studios with nationally renowned musicians. Olive will utilise the finished works in workshops called *Health and Healing through Music*.





### Regional Arts Showcase Fund

The WA Regional Arts Showcase Fund was released as a special funding round for Western Australian regional artists or community groups to create or remount work to be included as part of the artistic program for the Regional Arts Australia Summit: Arts & Edges.

Applications to the Showcase Fund were assessed in 2013, and hence were not a part of the 2014 application pool. However the successful applicants presented their work in 2014 and was a major component of the Regional Arts Australia Summit: Arts & Edges.

The support from this program allowed Western Australia to present the unique identities of the regions, and the high quality artistic outputs of this vast and varied state.

From the plethora of artistic content, Dalisa Pigram's seminal performance of *Gudirr Gudirr* was noted as a highlight from many Summit attendees. The intricate installation of *Wild!* from Narrogin filled the foyer with fibre art of animals and flora that was a visual delight. Spare Parts Puppet Theatre performance of *Farm* was also warmly received by attendees, particularly those who came from farming communities and could easily relate to the challenges of farm life.

Delegates were captivated with Punu Tjanpi Palyani, learning the unique techniques of traditional woodwork or Punu making and colourful basketry weaving taught by artists alongside arts workers and young people from the Tjuntjuntjara Community. Wilurarra Creative inspired people of all ages with the Wilurarra Studio Showcase presenting Ngaanyatjarra young people's music and creativity through an interactive hub that included a built-in recording studio and photo booth reconstructed from the studio based in Warburton Community.

Goldfields Repertory Club showcased the historical performing arts scene of the region with a performance of the 1908 *Duchess of Coolgardie* at the magnificent Boulder Town Hall. Annette Carmichael shared unique stories from the Great Southern with audiences through a reworking and performance of *Solace and Yearning*.

And taking centre stage to open and close the Summit, From the Gascoyne to the Goldfields saw the Gascoyne Circus and Physical Theatre enchant audiences with an abundance of roving and spontaneous aerial, fire, dance and stilt performances.



## Quick Response Grant

The Quick Response Grant provides support for individual artists and regional organisations to take advantage of small-scale arts development opportunities that come up at the last minute and could otherwise be limited by time constraints and lack of funding availability.

Quick Response Grant categories:

### Individual – up to \$1,500

This program provides support for professional development opportunities for individual artists and arts workers in regional Western Australia.

### Community – up to \$3,000

This program provides support for small-scale arts development initiatives for organisations in regional Western Australia.

In 2014, 22 eligible applications received to the Quick Response Grant requesting a total of \$48,224. Fifteen applications were approved to a total of \$35,045.

### In 2014 the Quick Response Grant supported:

**Warmum Arts Centre** **\$2,560**

#### *INDigital Workshop PIAF 2014 | Kimberley*

A professional development opportunity for two Warmum Arts Centre media trainees to attend a conference in Perth to gain valuable experience in the digital media field and develop a greater understanding of the potential of new media for their wider community.

**Denmark Arts Council** **\$2,200**

#### *Tenzin Cheogyal and the Monks of Tibet | Great Southern*

Denmark Arts Council hosted a group of Tibetan monks to create an opportunity for the Denmark community to experience Tibetan culture through workshops, concerts, talks and demonstrations.

**Walkatjurra Cultural Centre** **\$2,024**

#### *Walkatjurra Pottery | Goldfields Esperance*

Walkatjurra Cultural Centre engaged visiting professional artist Sarah Vallentine to run a series of pottery workshops, introducing local artists to a new art form. The workshops have resulted in the created works being exhibited in the Goldfields Arts Centre and Fremantle.

**Bardi Artist Group** **\$3,000**

#### *Bardi Artists at Henry's Mobile Studio | Kimberley | Auspiced by Ardyaloon Aboriginal Corporation*

Two Bardi Artists were invited to be guest artists for Henry's Mobile Studio at the Next Wave Festival in Melbourne. The professional development opportunity included collaborating with over 30 artists, attending presentations, and networking.

**Mungullah Women's Group Aboriginal Corporation** **\$3,000**

#### *Bring Dirtwater to Mungullah | Gascoyne*

Mungullah Women's Group took advantage of popular band Dirtwater's nearby tour to bring the band to Mungullah Community for a youth workshop and talk, followed by a performance for the whole community.

**Arts and Cultural Development Council of Geraldton Inc** **\$3,000**

#### *Wonderful WAFTA Workshops | Mid West*

A skills development opportunity brought four of WA's top textile artists to Geraldton, to each lead a full day workshop in advanced textile techniques for local artists and community members.





### **Chrysalis Support Services**

**\$3,000**

#### ***Hip Hop Workshops | Mid West***

Perth hip hop artist Young Chosen was brought to Geraldton to run hip hop workshops with 50 young female locals, helping them to develop a song based on the domestic violence and sexual assault education program *Love Bites*. The end product is now available on iTunes and was shown at a local cinema in Geraldton.

### **Dampier Bellydance Group**

**\$3,000**

#### ***Bellydance Workshop | Pilbara | Auspiced by Pilbara Wildlife Carers Association Inc***

Dampier Bellydance Group brought a professional bellydance teacher from Perth to Dampier to run bellydancing workshops open to all females in the Pilbara district. The women developed their dancing and teaching skills and held a performance at the completion of the workshops.

### **Balingup Progress Association**

**\$3,000**

#### ***Balingup Storytellers | South West***

The project took advantage of *Barefaced Stories* founder Andrea Gibbs visit to the region to engage her to run a series of storytelling workshops for interested Balingup locals. The workshops used participants real-life experiences to build skills in storytelling performance.

### **Curtis Taylor**

**\$3,000**

#### ***Malya Yuturringu | Pilbara | Auspiced by Punmu Aboriginal Corporation***

Malya Yuturringu brought together six Western Desert communities to acknowledge the talents of over 300 Martu youth through a three-day camping and film festival. The youth attended painting and dancing workshops and viewed the films made during the Martu Holiday Program.

### **Elaine Clocherty**

**\$1,417**

#### ***Gibbs Farm and Chris Booth | South West***

Sculpture artist Elaine was invited to visit Gibbs Farm Site Specific Sculpture Park and environmental artist Chris Booth's farm in New Zealand, to develop her knowledge of site-specific art and explore potential exhibition opportunities.

### **Tullia Chung-Tilley**

**\$1,334**

#### ***SOMA Workshop | Kimberley***

A professional development opportunity for dancer Tullia Chung-Tilley to attend the SOMA workshops in Broome. The workshops offered a chance to learn from experienced arts practitioners in the fields of arts health and social change.

### **Keith Nicholas**

**\$1,500**

#### ***Australian National Band/Orchestra Clinic | Goldfields Esperance | Auspiced by Goldfields Brass Band***

A professional development opportunity for Keith Nicholas to attend the National Conducting Clinic in Melbourne, including tuition and workshops run by internationally recognised musicians.

*Jamyang Ngodup, Jampa Lama, Lobsana Norbu at the ceremony to offer mandala to the river. Photo by Dawn Cooper.*



**Shaun Meehan**

**\$1,500**

***Intensive Professional Development Project | Kimberley | Auspiced by Broome Aboriginal Media Association***

Professional musician Bradley Martin was employed as a consultant and mentor to Shaun to develop his self-management skills and enable him to work as an independent professional musician. The intensive one-on-one workshops were undertaken in Wyndham.

**Katie Breckon**

**\$1,500**

***Solo Exhibition At Edmund Pearce | Kimberley***

Photographer Katie Breckon was supported by Quick Response Grant to attend her solo exhibition opening event and artist talks in Melbourne gallery Edmund Pearce. Katie had the opportunity to develop her skills in building industry relationships, connecting with audiences and selling her work.

### **Regional Arts Australia Summit: Arts & Edges Presenter Travel Assistance**

The Presenter category of Summit Travel Assistance was funded through the Regional Arts Fund Quick Response Grant. Thirty-two (32) eligible applications were received, requesting a total of \$68,518. Sixteen (16) applications were approved to a total of \$38,517.

Regional Arts Australia Summit: Arts & Edges Presenter Travel Assistance funding supported:

***Ausdance WA | Perth***

**\$3,000**

Three regional panellists presented an immersive panel discussing how Ausdance's *Future Landings* program engages with regional dance artists, develops skills in community engagement and gives communities the opportunity to 'dance' their stories.

***Bo Wong | Great Southern***

**\$1,500**

Photographer Bo Wong presented a workshop on photographing artworks for gallery and print outcomes, in addition to giving a presentation on her project *Design Satellite*, a web resource profiling artists and designers in regional Western Australia.

***Creative Albany | Great Southern***

**\$2,570**

In conjunction with Bookmark and ABC Radio, two actors attended the Summit to present live readings of radio plays that were developed from short stories written by Albany locals. The live radio plays were performed in a Kalgoorlie town square.

***Delvina Lawson | Goldfields Esperance | Auspiced by Wilurarra Creative - Warburton Community Inc***

**\$1,482**

Delvina Lawson participated in presenting Wilurarra Creative, an interactive hub showcasing Ngaanyatjarra music, culture and creativity. The hub provided a point of contact for Ngaanyatjarra artists at the Summit and featured a built-in recording studio and photo booth.

***Gascoyne Circus and Physical Theatre | Gascoyne***

**\$3,000**

Gascoyne Circus and Physical Theatre troupe featured at both the opening and closing events of the Summit, showcasing Gascoyne-grown regional performing arts, circus and multi-media.





**Jasmine Lawson | Goldfields Esperance | Auspiced by Wilurarra Creative - Warburton Community Inc \$1,482**

Jasmine Lawson participated in presenting Wilurarra Creative, an interactive hub showcasing Ngaanyatjarra music, culture and creativity. The hub provided a point of contact for Ngaanyatjarra artists at the Summit and featured a built-in recording studio and photo booth.

**Marra Aboriginal Art Corp | Mid West \$1,500**

Visual artist Tracey Green had the opportunity to sell her works, engage with curators and other artists, and gain professional development from setting up a temporary exhibition at the Summit.

**Marrugeku Inc | Kimberley \$3,000**

Marrugeku presented solo contemporary dance performance *Gudirr Gudirr* as part of the WA Regional Showcase. Co-Artistic Director and performer Dalisa Pigram had the opportunity to discuss the company's work with other regional Australian artists and organisations.

**Paupiyala Tjarutja Aboriginal Corporation | Goldfields Esperance \$3,000**

Professional artists worked alongside artworkers to present a combined exhibition, demonstration and workshop of traditional woodwork, modern sculptural pieces and weaved baskets. Summit delegates were able to watch demonstration and participate in workshops to make their own pieces.

**Pundara Performance Group | Gascoyne | Auspiced by Gascoyne Circus and Physical Theatre \$3,000**

Pundara Performance Group created a blend of contemporary Indigenous dance and large-scale projection art to be presented at the opening and closing ceremonies of the Summit.

**Richard Wells | Wheatbelt | Auspiced by Shire of Kondinin \$1,500**

Richard Wells was the first policeman to present at the Summit. He spoke about his instrumental role in the *Boss of My Body* project, and his experience working in partnership with Country Arts WA in Burringurrah Remote Aboriginal Community.

**Silvano Giordano | Goldfields Esperance | Auspiced by Wilurarra Creative - Warburton Community Inc \$1,481**

Silvano Giordano participated in presenting Wilurarra Creative, an interactive hub showcasing Ngaanyatjarra music, culture and creativity. The hub provided a point of contact for Ngaanyatjarra artists at the Summit and featured a built-in recording studio and photo booth.

**Solace and Yearning | Great Southern | Auspiced by Denmark Arts Council Inc \$3,000**

*Solace and Yearning* combined dance, theatre, eco-dyed textiles, Noongar language and writing in a solo performance at the Summit. Led by Annette Carmichael, the project was created in Denmark with local community members.

**Tjarlirli Arts | Goldfields Esperance \$3,000**

The Tjarlirli Arts Summit group comprising of staff, members and artists had the opportunity to present their visual arts at the Summit market, as well as develop their skills in networking and exchanging ideas and experiences with other delegates and presenters.

**Tjukurba Art Gallery | Mid West \$3,000**

Tjukurba artists had a unique opportunity to create and display their visual art in a large space at the Summit. They were able to develop their skills in engaging with the general public and discussing their artworks and culture.

**Wirnda Barna Artists Inc | Mid West \$3,000**

Wirnda Barna Manager Brendan Penzer and senior artists Annie Walsh and Frank Walsh Snr presented at the Summit AACHWA Art Markets and engaged with the wider program at seminars, performances and discussions, resulting in a number of valuable professional development opportunities.



## Partnership Fund

The Partnership Fund is designed to partner professional arts organisations with regional, remote and very remote community organisations to create high quality, innovative arts projects that develop cultural networks and build capacity for long term benefits.

The following projects will be supported over two years finishing in 2016:

***Marrugeku Inc. | Kimberley***

**\$40,000**

***Workshops in three regional communities***

Marrugeku Inc. will deliver a program of community based dance and storytelling development over two years across communities in the Kimberley and Peel region. The first year of skills development workshops will be implemented in tandem with a live performance of Marrugeku's new work, *Cut the Sky*. The second year will focus on the company facilitating the participants to develop their own stories and content.

***Spare Parts Puppet Theatre | Metro/Peel***

**\$40,000**

***Spare Parts Puppet Theatre Peel Creative Residency Program***

Spare Parts Puppet Theatre will relocate its Creative Residency Program to the Peel region in 2015–16. The program will include delivery of skills-development workshops and creative residencies by Spare Parts Puppet Theatre artists in the development of two new works.







## Cultural Worker Positions

Cultural Worker Positions funding was established to provide core support enabling the employment of cultural workers to deliver an arts and culture program in regional, remote and very remote Western Australia from 2014-2016.

This program is designed to extend the core function of organisations by developing projects that have long-term impact and strategic intent in the regions, through funding a cultural worker position in a community organisation or an arts organisation.

Cultural Worker funding was allocated in 2013, and Country Arts WA has been able to continue to fund the two positions in 2014.

### **writingWA**

**\$150,000; \$50,000pa for three years**

#### ***Regional Engagement Officer I Statewide***

writingWA has employed a Regional Engagement Officer to coordinate and deliver the Regional Engagement Program across WA. This Officer coordinates Writers of the Road, provides programming advice and support for regional Writer's Festivals and builds the regional membership base and the support for regional literature.

### **Tjanpi Desert Weavers**

**\$150,000; \$50,000pa for three years**

#### ***Tjanpi Remote-based Arts and Cultural Field Officer I Goldfields-Esperance***

The Tjanpi Remote-based Arts and Cultural Field Officer is delivering a dynamic arts and cultural program to nine remote Aboriginal communities in WA including Karilywarra, Tjukurla, Warakurna, Wanarn, Mantamaru, Papulankutja, Irrunytju, Warburton and Kiwurrkurra. The program is supporting fibre art and enhances economic, artistic, social and cultural wellbeing for the 120 women artists in the Ngaanyatjarra region.





# Volunteer Travel Assistance

The Volunteer category of Summit Travel Assistance was funded through Lotterywest. Thirty two eligible applications were received, requesting a total of \$42,513 applications were approved to a total of \$30,000. These volunteers make a valuable contribution to their communities by actively volunteering their time and skills, and Country Arts WA was delighted to be able to offer this opportunity to support their engagement with the Summit.

Regional Arts Australia Summit: Arts & Edges Volunteer Travel Assistance funding supported:

Adrian Baer   <i>Great Southern</i>   <i>Auspiced by Denmark Arts Council Inc</i>	\$1115
ARtS Narrogin   <i>Wheatbelt</i>	\$2191
Deborah Hughes-Owen   <i>Wheatbelt</i>   <i>Auspiced by ARtS Narrogin</i>	\$1057
Esperance Community Arts Inc   <i>Goldfields-Esperance</i>	\$1958
Fiona Sinclair   <i>South West</i>   <i>Auspiced by Southern Forest Arts Inc</i>	\$1109
Gwendolyn Wenli   <i>South West</i>   <i>Auspiced by Southern Forest Arts Inc</i>	\$1109
Janette Ellis   <i>Gascoyne</i>	\$1500
Jennifer Chambers   <i>Goldfields Esperance</i>   <i>Auspiced by Ravensthorpe Community Centre</i>	\$1061
Jenny Broun   <i>Wheatbelt</i>   <i>Auspiced by Beverley Station Arts</i>	\$198
Joseph Young   <i>Goldfields-Esperance</i>   <i>Auspiced by Esperance Community Arts Inc</i>	\$1329
Kathryn McLean   <i>Wheatbelt</i>   <i>Auspiced by Beverley Station Arts</i>	\$198
Kimberley Whitehall-Hola   <i>Gascoyne</i>   <i>Auspiced by Gascoyne Arts Council Inc</i>	\$1500
Leita Barrett-Lennard   <i>Wheatbelt</i>   <i>Auspiced by Beverley Station Arts</i>	\$800
Lorraine Malone   <i>Wheatbelt</i>   <i>Auspiced by Inspirational Community Arts Network</i>	\$1000
Madeleine Norman   <i>Goldfields Esperance</i>   <i>Auspiced by Jerdacuttup Community Association</i>	\$672
Marie O'Dea   <i>Great Southern</i>	\$672
Michelle Siciliano   <i>Wheatbelt</i>   <i>Auspiced by ARtS Narrogin</i>	\$1000
Naomi Roy   <i>Goldfields Esperance</i>   <i>Auspiced by Cannery Arts Centre</i>	\$899
Phaedra Watts   <i>South West</i>   <i>Auspiced by Nannup Music Club</i>	\$1151
Ravensthorpe Regional Arts Council   <i>Goldfields-Esperance</i>	\$2260
Rod Laws   <i>South West</i>	\$1000
Rosa Moyle   <i>South West</i>   <i>Auspiced by Manjimup Chamber of Commerce and Industry</i>	\$1000
Rosie Seager   <i>Gascoyne</i>   <i>Auspiced by Gascoyne Arts Council Inc</i>	\$1500
Sandy Hope   <i>Great Southern</i>   <i>Auspiced by Denmark Arts Council Inc</i>	\$1115
Sarah Miller   <i>Wheatbelt</i>   <i>Auspiced by Beverley Station Arts</i>	\$800
Tracey Fleay   <i>Wheatbelt</i>   <i>Auspiced by Beverley Station Arts</i>	\$800
Zabia Chmielewski   <i>Pilbara</i>   <i>Auspiced by Hedland Arts Council Inc</i>	\$1000



# Key Performance Indicators and Audited Accounts



# Key Performance Indicators

## Operational Key Performance Indicators

GOAL	KPI	PLANNED	ACTUAL
1. Every regional community is part of a state-wide regional arts network	Identify and map WA regional communities	Engagement of RAD staff	Funding not approved for staff.
		Mapping of entire state	Mapping did not take place.
2. One strong, united voice for regional arts in WA	Clearly articulated agenda for regional arts	Maintain the Vote Arts platforms (website & social media)	Achieved - Regular engagement with these platforms.
		Review the <i>Advocacy Strategy</i> , building on from the <i>Manifesto</i> and the <i>Foundations for the Future Policy</i>	Achieved - Advocacy has focused on the funding priorities for the new investment into regional arts.
		Promote and action the <i>Advocacy Strategy</i>	Achieved.
		Increase corporate exposure and community awareness of regional arts in WA (Manifesto Step 3)	Achieved - Total of 476 media coverage stories were achieved, with 264 (55%) representing the Summit coverage during the year.
3. Regional communities with capacity to deliver locally relevant and sustainable arts projects	Continue to deliver existing program	Provide core funding support for community based regional arts organisations to deliver a year-long multi artform program	11 regional + 1 Indian Ocean Territory (IOT) organisations supported.
		Ensure equity and access successful applications will be received from a majority of regions in the state	8 regional + 1 IOT organisations supported.
		Ensure applicants source other support from other structures that is leveraged off State Government support	An extra \$4,363,272 sourced from other income streams.
		Encourage diversity by each annually funded organisation presenting a program of various artforms	Achieved - Developed as part of criteria.
		Deliver a three tiered format of funding that recognises different organisations are at different stages of development	Achieved - Delivered and oversubscribed in all three tiers.
		Support organisations to engage in relevant local, WA and Australia wide partnerships including peak arts organisations	Achieved - Average 17 partnership each; totalled 207 partnerships.
		Encourage organisations to develop regional artists and reflect the identity of their region in their program	Achieved - 1,101 regional WA artists paid by Core Arts Fund organisations.
		Offer high quality professional performances to regional and remote communities	Achieved - 23 performances presented.
		Involve regional communities in the selection of touring product (minimum 25 responses)	Achieved - 32 responses.
		Involve regional communities in the presentation of touring product	Achieved - Guide for new and existing members distributed.
		Make the product as affordable as possible	Current partnerships continued to retain affordable pricing. No new sponsors attracted.
		Build the confidence in community presenters and their ability to deliver professional performing arts touring shows	66% of Share the Risk (STR) funds committed. 25% of STR funds drawn. Professional Development Program created and tendered to Department of Culture and the Arts (DCA).
		To offer an equitable access to professional performing arts to regional and remote Western Australian communities	Shows on the Go and CircuitWest tours visited 8 of 9 regions (missed Great Southern)
		Encourage young people in performing arts and build audiences for the future	Schools Touring program visited 7 of 9 regions.





## Operational Key Performance Indicators (continued)

GOAL	KPI	PLANNED	ACTUAL
3. Regional communities with capacity to deliver locally relevant and sustainable arts projects (continued)	Continue to deliver existing program	Build up contemporary music touring circuits	2 x regions visited – Kimberley and Pilbara.
		Formalise a partnership with CircuitWest in relation to WA producers pitching at showcase	No formal MOU but working closely on Producer Forum and WA Showcase.
		Record application numbers (minimum 140) and unmet need	Achieved - 149 applications All funding categories fully subscribed except Share The Risk (66%) \$191,094.64 in unmet need.
		Review and evaluate the Gascoyne Focus Region Initiative to develop recommendations for the next Focus Region Plan	Achieved - Final Report created including recommendations.
		Continue to advocate for unmet need for devolved funding programs	Variance to DCA funding signed.
		New funding framework and guidelines established	Achieved - Regional Funding priority report created.

## Marketing Key Performance Indicators

GOAL	KPI	PLANNED	ACTUAL
1. Use membership to drive development of State-wide regional arts network	Increased membership numbers	Increase membership numbers by 20%	247 members, an increase of 58 new members. > 20% increase on 2013.
	Increased number of communities in Network have at least one member	Base data collected	Membership regional breakdown complete – no resources to map networks and/or communities. Membership increases in Perth, Wheatbelt, South West, Gascoyne, Great Southern and Peel regions.
2. Increase awareness of and participation with Country Arts WA and its services.	Increased satisfaction rating from members and partners through Annual Survey process	Initiate Partnership Survey	Stakeholder Survey distributed Feb 2014
		Review and improve membership survey	Improved membership survey implemented 2014 responses rate of over 25% of members
		5% increase to website, Facebook, Twitter, Art E Facts, electronic and print media	March 2014 to December 2014 Twitter followers +20% Facebook +6% Art E Facts subscribers +3%
3. Build the profile of regional arts in WA	Increased profiling of regional arts WA programs and projects	Base data collected: • Regional Arts Fund case studies, inspirational stories on website • Country Arts WA project in official publications, annual report	All case study outcomes have been showcased both on the Country Arts WA website and in the annual report 2014

## Financial Key Performance Indicators

GOAL	KPI	PLANNED	ACTUAL
1. Increased income for delivery of core operations	Minimum 25% of all income targeted to core operations	25%	21% Total Income = \$5,363,294 Core Operations Cost = \$1,143,145
2. Increased Reserves to match turnover	Reserve Ratio above 10% by 2018	4%	3.2% Total Expenditure (minus Devolved Funding) = \$4,380,540 Reserves = \$140,960

# Board of Directors Report

Your Board of Directors submits the financial report of Country Arts (WA) Incorporated for the financial year ended 31 December 2014.

## BOARD OF DIRECTORS

The names of Board Directors throughout the year and at the date of this report are:

Kate Fielding – Chairperson	Natalie Jenkins	James Davies <i>(April 2013 – April 2014)</i>
Ross Beckett - Vice Chairperson	Lynette Narkle	Kira Fong <i>(April 2013 – April 2014)</i>
Shane Colquhoun - Secretary	Curtis Taylor	Brittany Moxham <i>(June 2012 – April 2014)</i>
Peter Rupp – Treasurer	Chris Budhan	Lindsay Lovering <i>(April 2013 – April 2014)</i>
Fay O'Brien	Chris Tan	
Donna Malec	Keith Whenmouth	
Andrea Gray	Andrew Chambers <i>(April 2013 – August 2014)</i>	

## PRINCIPAL ACTIVITIES

The principal activity of the association during the year was to support the development and delivery of the arts and cultural activity in regional Western Australia.

## SIGNIFICANT CHANGES

No significant change in the nature of these activities during the year.

## OPERATING RESULTS

The surplus from ordinary activities for the year amounts to \$25,398 (2013: \$48,445 deficit).





# Audited Accounts

## INCOME AND EXPENDITURE STATEMENT FOR THE ENDED 31 DECEMBER 2014

	2014 \$	2013 \$
<b>INCOME</b>		
<b>NON GRANT INCOME</b>		
Earned Income		
Audience Sales		
Box Office and Entry Fees	293,802	6,284
Contract Fees (Presenters Fees)	405,250	201,323
Total Audience Sales	699,052	207,607
Fees and Services		
Project Partners		
RDA G-E	64,000	-
City of Kalgoorlie - Boulder	115,000	-
Others	-	60,000
Total Project Partners	179,000	60,000
Participants Fees (Program Fees)	5,669	995
Membership Fees	14,202	13,183
Tour Coordination Fees	89,933	90,383
CAWA In Kind	-	120,363
Total Fees and Services	288,804	284,924
Resources Income		
Other Usage Income	1,687	12,729
Total Resources Income	1,687	12,729
Sponsorship and Philanthropic		
Sponsorship		
In Kind Sponsorship	37,808	-
BHP Hedland – Funds b/f	87,178	64,642
BHP Hedland	85,000	120,000
Department of Communities	5,000	-
Events Corp	235,440	-
Horizon Power	-	20,000
Other Sponsorships	2,318	-
	452,744	204,642
Philanthropic		
The Ian Potter Foundation	13,000	20,000
	13,000	20,000
Total Sponsorship and Philanthropic	465,744	224,642
Donations		
Other	460	200
Total Donations	460	200
Other Earned Income		
Interest (Received)	33,301	31,240
Reimbursements (Support Fees)	564	3,554
Total Other Earned Income	33,865	34,794
<b>TOTAL EARNED INCOME</b>	<b>1,489,612</b>	<b>764,896</b>

# INCOME AND EXPENDITURE STATEMENT FOR THE ENDED 31 DECEMBER 2014

	2014 \$	2013 \$
<b>GRANT INCOME</b>		
<b>Australia Council Funds</b>		
Australia Council – Funds b/f	-	55,067
Australia Council	170,000	11,287
Music Board – Sand Tracks	30,000	25,000
Comm.Partners – Gascoyne Partnership	-	100,000
<b>Total Australia Council Funds</b>	<b>200,000</b>	<b>191,354</b>
<b>Other Commonwealth</b>		
RAF 6 2012-2016 b/f	10,968	-
Regional Arts Fund 6 2012-2016	504,336	451,654
RAF 6 Index funding	43,710	-
RAA Conference Funds	-	120,500
Playing Australia Funds	219,062	-
Min Arts - AACHWA b/f	28,222	26,044
Min Arts VACS - AACHWA	250,000	250,000
IOT Funding	45,251	104,015
Min Arts ICS – Sand Tracks b/f	7,473	-
Min Arts ICS – Sand Tracks	35,000	35,000
RAA NSP – Sand Tracks	36,458	35,000
RAA NSP – Internet	15,000	-
<b>Total Other Commonwealth</b>	<b>1,195,480</b>	<b>1,022,213</b>
<b>DCA WA</b>		
DCA – Brought Forward	144,993	146,955
DCA – Allocation	1,281,026	1,271,131
DCA – Conference 2014	86,225	168,079
DCA – AACHWA b/f	27,846	-
DCA – LFF AACHWA	18,700	106,300
DCA – SFP AACHWA	25,000	-
DCA – LFF GIM	78,435	123,805
DCA – Other Projects	-	15,746
<b>Total DCA WA</b>	<b>1,662,225</b>	<b>1,832,016</b>
<b>Other State Funding</b>		
Healthway – Funds b/f	6,153	-
Healthway	171,073	190,017
Lotterywest – Funds b/f	75,466	31,147
Lotterywest	406,977	275,038
Department of Communities – Funds b/f	62,388	9,000
Department of Communities	-	61,328
Gascoyne Dev. Commission – Funds b/f	-	1,431
Gascoyne Dev. Commission	-	138,273
Mental Health Commission	68,911	110,377
<b>Total Other State Funding</b>	<b>790,968</b>	<b>816,611</b>
<b>TOTAL GRANT INCOME</b>	<b>3,848,673</b>	<b>3,862,194</b>
<b>TOTAL INCOME</b>	<b>5,338,285</b>	<b>4,627,090</b>







## INCOME AND EXPENDITURE STATEMENT FOR THE ENDED 31 DECEMBER 2014

	2014 \$	2013 \$
<b>EXPENSES</b>		
<b>SALARIES, WAGES &amp; FEES</b>		
Creative Personnel/Consultants	403,180	291,116
Performers/Artists/Arts workers	170,888	124,274
Production/Technical	95,067	37,508
Management / Administration		
Management Salaries	1,018,510	965,440
Casual Staff	4,838	110
Total Management / Administration	1,023,348	1,121,684
Marketing Staff	183,283	156,134
Total Fees, Allowances and On-costs	240,966	304,762
<b>TOTAL SALARIES, WAGES &amp; FEES</b>	<b>2,116,732</b>	<b>1,879,345</b>
<b>PROGRAM, PRODUCTION &amp; TOURING</b>		
Catering	15,478	-
Equipment, Lighting & Audio Cost	102,780	1,489
Venue and Exhibition Space	147,603	635
Scenic, Staging and Materials	32,678	556
Other Development and Creative	1,580	3,085
Total Travel, Freight, Bump In/Out Cost	597,471	532,515
Total Other Production & Touring Cost	426,997	402,635
<b>TOTAL PROGRAM, PRODUCTION &amp; TOURING</b>	<b>1,324,587</b>	<b>940,915</b>
<b>ITEMS-NON-PRODUCERS/PRESENTERS</b>		
Conference & Workshops	51,644	-
Mentorship/Development Programs	-	12,600
Industry & Community Advocacy	35,225	4,902
Community Projects	957,356	838,812
Evaluation and Research Costs	1,000	42,858
<b>TOTAL ITEMS-NON-PRODUCERS/PRESENTERS</b>	<b>1,045,225</b>	<b>899,172</b>



## INCOME AND EXPENDITURE STATEMENT FOR THE ENDED 31 DECEMBER 2014

	2014 \$	2013 \$
<b>MARKETING &amp; PROMOTION</b>		
Advertising (all media)	97,357	36,770
Promotional Materials	95,964	52,570
Website, Publications & Documentation	43,102	55,222
Marketing & PR	62,272	36,091
Fundraising & Sponsorship Expenses	894	908
<b>TOTAL MARKETING &amp; PROMOTION</b>	<b>299,589</b>	<b>181,561</b>
<b>INFRASTRUCTURE COSTS (ADMIN)</b>		
In Kind Expenses – CAWA	-	92,363
In Kind Expenses – Others	11,650	-
Office Rent and Running Costs	17,242	17,202
Total Office Consumables & Resources	71,730	69,827
Total Communications	44,725	40,226
Total Travel	455	455
Total Legal, Finance & Governance	103,207	126,647
Acquittal – Playing Australia	7,211	-
Depreciation & Loss on Sale	22,763	29,423
Unexpended Grants & Sponsorship	272,779	473,902
<b>TOTAL INFRASTRUCTURE COSTS (ADMIN)</b>	<b>551,762</b>	<b>850,045</b>
<b>TOTAL EXPENSES</b>	<b>5,337,895</b>	<b>4,751,038</b>
<b>NET ORDINARY SURPLUS/ (DEFICIT)</b>	<b>389</b>	<b>(123,948)</b>
Less: Other Year End Adjustments		
Other Income		
Surplus from RAA Summit	4,958	-
Fixed Asset Reserve	20,051	25,780
Future Project Funds b/fwd	-	49,723
<b>Total Other Income</b>	<b>25,009</b>	<b>75,503</b>
<b>NET SURPLUS/ (DEFICIT)</b>	<b>25,398</b>	<b>(48,445)</b>





## BALANCE SHEET AS AT 31 DECEMBER 2014

	2014 \$	2013 \$
<b>ASSETS</b>		
Current Assets		
ANZ General Cheque Account	75,230	74,704
ANZ Term Deposit	417,941	403,579
Online Saver Account	229,253	516,894
Donation Fund Account	697	479
Funds Held Account	95	95
AACHWA Business Classic Saver	314,094	333,282
AACHWA Online Saver	165,460	93,338
Petty Cash Float	300	300
Total Cheque/Savings	1,203,070	1,422,671
<b>Other Current Assets</b>		
Inventory and Work in Progress		
Prepayments	11,246	20,691
Sundry Debtors	927	455
Total Inventory and Work in Progress	12,173	21,146
Bond - Cab charge	200	200
Accounts Receivable	76,798	337,948
Total Other Current Assets	76,998	338,148
<b>Total Current Assets</b>	<b>1,292,241</b>	<b>1,781,965</b>
<b>Fixed Assets</b>		
Office Furniture & Equipment	22,485	20,179
Less Accumulated Depreciation	(10,461)	(7,749)
Total Office Furniture & Equipment	12,024	12,430
Lotterywest Computer Equipment	60,155	60,155
Less Accumulated Depreciation	(60,155)	(40,104)
Total Lotterywest Computer Equipment	-	20,051
<b>TOTAL FIXED ASSETS</b>	<b>12,024</b>	<b>32,481</b>
<b>TOTAL ASSETS</b>	<b>1,304,265</b>	<b>1,814,446</b>



## BALANCE SHEET AS AT 31 DECEMBER 2014

	2014 \$	2013 \$
<b>LIABILITIES</b>		
Accounts Payable	252,564	431,301
Credit Cards		
ANZ Debit Card	-	(1,888)
Total Credit Cards	-	(1,888)
<b>Other Current Liabilities</b>		
Sundry Creditors	-	1,000
Income Received in Advance		
AACHWA Future Project Fund	2,400	-
BHP Billiton Sponsorship	60,000	-
Total Income Received in Advance	62,400	-
Grants Received in Advance		
Australia Council – The Deep	-	112,236
DCA – Conference Support	-	31,921
DCA LFF – GIM	-	78,435
Department of Local Government & Communities	-	5,000
Lotterywest – AACHWA Incorp	-	37,270
Lotterywest – Conference 2014	-	10,000
Min Arts VACS – AACHWA	125,000	-
RAA NSP – Internet & The Arts	-	15,000
RAA – NSP Sand Tracks	35,000	36,458
RAA Indigenous Engagement	48,320	-
RAF 6 2012 – 2016	252,213	322,314
Total Grants Received in Advance	460,533	648,634







## BALANCE SHEET AS AT 31 DECEMBER 2014

	NOTE	2014 \$	2013 \$
Unexpended Grants / Sponsorship			
BHP Hedland		21,323	87,178
Circuitwest Tour 2014		-	3,501
DCA - SFP AACHWA		35,380	-
DCA - Arts Dev. Peak		-	4,215
DCA - Conference 2014		-	86,890
DCA - Sand Tracks		-	7,473
DCA - Schools Touring		11,250	-
DCA - Touring Development		12,128	22,853
DCA LFF - AACHWA		-	27,846
DCA LFF - GIM		23,533	31,837
Department of Communities - Create Tank		-	62,388
Healthway - Y Culture Regional		1,775	6,154
Lotterywest - CW Aud. Development		50,273	75,466
Lotterywest - Share the Risk		26,037	-
Mental Health Comm - S T Evaluation		-	18,911
Min Arts ICS - Sand Tracks		16,605	-
RAA NSP - Connections		10,266	-
Min Arts VACS - AACHWA		5,081	28,222
RAF 6 2012 - 2016		37,919	10,968
RDA G.E Focus Region		21,209	-
Total Unexpected Grants / Sponsorship		272,779	473,902
Tax and Other Withholdings			
Staff Social Club Funds		242	146
Provision for Group Tax		25,082	22,049
Provision for Superannuation		14,326	10,231
Tax Payable		10,453	14,187
Total Tax and Other Withholdings		50,103	46,613
Provisions			
Provision for Annual Leave		36,159	29,200
Provision for Long Service Leave		16,501	36,501
Provision for Super on Leave Provisions		5,266	6,570
Parental Leave Reserve		7,000	7,000
Total Provisions		64,926	79,271
Total Other Current Liabilities		910,741	1,249,420
Total Current Liabilities		1,163,305	1,678,833



## BALANCE SHEET AS AT 31 DECEMBER 2014

	NOTE	2014 \$	2013 \$
<b>Non Current Liabilities</b>			
Deferred Liability			
Fixed Asset Reserve	(4)	-	20,051
Total Deferred Liability		-	20,051
<b>Total Non Current Liabilities</b>		-	20,051
<b>TOTAL LIABILITIES</b>		<b>1,163,305</b>	<b>1,698,884</b>
<b>NET ASSETS</b>		<b>140,960</b>	<b>115,563</b>
<b>EQUITY</b>			
Retained Earnings		115,563	164,008
Net (Deficit)/Surplus		25,398	(48,445)
<b>TOTAL EQUITY</b>		<b>140,960</b>	<b>115,563</b>
<b>CASH FLOWS FROM OPERATING ACTIVITIES</b>			
Receipts from members		14,202	13,183
Grant receipts & other funding		5,422,232	5,317,237
Support fees		564	3,554
Interest received		33,301	31,240
Payments to suppliers and employees		(5,687,594)	(5,003,473)
<b>Net cash provided by/(used) from operating activities</b>	<b>6(ii)</b>	<b>(217,295)</b>	<b>361,741</b>
<b>CASH FLOWS FROM INVESTING ACTIVITIES</b>			
Fixed assets purchases		(2,306)	(4,775)
<b>Net cash provided/(used) from investing activities</b>		<b>(2,306)</b>	<b>(4,775)</b>
<b>Net increase/(decrease) in cash held</b>		<b>(219,601)</b>	<b>356,966</b>
<b>Cash at beginning of year</b>		<b>1,422,671</b>	<b>1,065,705</b>
<b>CASH AT THE END OF THE YEAR</b>	<b>6(i)</b>	<b>1,203,070</b>	<b>1,422,671</b>





### STATEMENT BY MEMBERS OF THE BOARD

In the opinion of the Board the financial report:

1. The board has determined that Country Arts (WA) is a non-reporting entity and the attached financial report is a special purpose financial report prepared for the purpose of advising members and funding bodies of the balance sheet and income and expenditure of Country Arts (WA) in accordance with its constitution.
2. Presents a true and fair view of the balance sheet of Country Arts (WA) Incorporated as at 31 December 2014 and its performance for the year ended on that date in accordance with accounting policies described in Note 1 to the Financial Report.
3. At the date of this statement, there are reasonable grounds to believe that Country Arts (WA) Incorporated will be able to pay its debts as and when they fall due.

This statement is made in accordance with a resolution of the Board and is signed for and on behalf of the Board by:

Kate Fielding  
Chairperson  
Dated: 13 March 2015

Peter Rupp  
Treasurer  
Dated: 13 March 2015

## NOTES TO THE FINANCIAL STATEMENTS FOR THE YEAR ENDED 31 DECEMBER 2014

### 1. STATEMENT OF SIGNIFICANT ACCOUNTING POLICIES

The financial report is a special purpose financial report that has been specifically prepared for distribution to members and funding bodies in accordance with the constitution.

The financial statement has been prepared on an accruals basis and is based on historical costs and does not take into account changing money values or, except where stated, current valuations of non-current assets. Cost is based on the fair values of the consideration given in exchange for assets.

The following is a summary of the material accounting policies adopted by the Association in the preparation of the financial report. The accounting policies have been consistently applied, unless otherwise stated.

#### (a) Revenue

Interest revenue is recognised upon receipt.

Grant income is recognised when the association gains control of the contribution.

Revenue from services is recognised upon delivery of the service to customers.

All revenue is stated net of the amount of goods and services tax (GST).

#### (b) Employee Benefits

Provision is made for the association's liability for employee benefits arising from services rendered by employees to balance date.

Employee benefits expected to be settled within one year together with benefits arising from wages and salaries and annual leave and sick leave, which will be settled after one year, have been measured at their nominal amount. Other employee benefits payable later than one year have been measured at the present value of the estimated future cash outflows to be made for those benefits.

Contributions are made by the association to an employee superannuation fund and are charged as expenses when incurred.

#### (c) Cash

For the purpose of the Statement of Cash Flows, cash includes cash on hand, at banks and on deposit.

#### (d) Property, Plant and Equipment

Each class of property, plant and equipment are carried at cost where applicable, any accumulated depreciation.

##### Plant and Equipment

Plant and equipment are measured on the cost basis.

The carrying amount of plant and equipment is reviewed annually by the association to ensure it is not in excess of the recoverable amount from those assets. The recoverable amount is assessed on the basis of the expected net cash flows which will be received from the assets employment and subsequent disposal. The expected net cash flows have not been discounted to present values in determining recoverable amounts.





## NOTES TO THE FINANCIAL STATEMENTS FOR THE YEAR ENDED 31 DECEMBER 2014

### Depreciation

The depreciable amount of all fixed assets are depreciated on a straight line basis over the useful lives of the assets to the association commencing from the time the asset is held ready for use.

The depreciation rates used for each class of depreciable asset are:

Class of fixed asset	Depreciation rate
Motor Vehicles	22.5%
Office furniture and equipment	9-40%
Office equipment donated	20%

### (e) Goods And Services Tax (GST)

Revenues, expenses and assets are recognised net of the amount of goods and services tax (GST) except where the amount of GST incurred is not recoverable from the Australian Taxation Office. In these circumstances the GST is recognized as part of the cost of acquisition of the asset or as part of an item of expense. Receivables and payables are stated with the amount of GST included.

### (f) Income Tax

The association is deemed a non-profit organization for income tax purposes and has tax exempt status under S. 50-45 of the Income Tax Assessment Act 1997.

### (g) Comparative Figures

Comparative figures have been adjusted to conform to changes in presentation for the current financial year.

## 2. EVENTS SUBSEQUENT TO BALANCE DATE

There were no material events occurring after the reporting date that had a financial effect on the association.

## 3. RELATED PARTY TRANSACTIONS

No related party transactions occurred during the year.

## 4. DEFERRED LIABILITY

The Board of Country Arts (WA) Incorporated has resolved to adopt an amendment to AASB1004 for the purposes of the 2012 Audit to ensure the 2012 Lotterywest IT Upgrade grant will be recognised in conjunction with the written down value of the Lotterywest equipment purchased. The equipment has now been fully written off.



## NOTES TO THE FINANCIAL STATEMENTS FOR THE YEAR ENDED 31 DECEMBER 2014

### 5. CASH FLOW INFORMATION

#### i. Reconciliation of Cash

For the purposes of the Statement of Cash Flows, cash includes cash on hand and at bank and short term deposits on call, net of outstanding bank overdrafts. Cash at the end of the financial year is as follows for the purposes of the Statement of Cash Flows:

	2014 \$	2013 \$
Cash on hand and at bank	1,203,070	1,422,671
<b>(ii) Reconciliation of net income/(expenditure) to net cash provided by/(used in) operating activities</b>		
Net surplus/(deficit)	25,398	(48,445)
Add/(less) non-cash income and expense items:		
Depreciation	22,763	29,423
Future Projects Funds	-	-
Transfers to/(from) provisions:		
Employee entitlements	(7,345)	48,033
<b>Change in assets and liabilities during the financial year</b>		
(Increase)/decrease in debtors	261,150	(102,966)
Increase/(decrease) in creditors, accruals, unexpended grants, and other liabilities	(528,235)	446,996
(Increase)/decrease in other assets	8,974	(11,300)
<b>Net cash provided by/(used in) operating activities</b>	<b>(217,295)</b>	<b>361,741</b>



# Independent Audit Report

## Report on the Financial Report

We have audited the accompanying financial report, being a special purpose financial report of Country Arts (WA) Incorporated, which comprises the balance sheet as at 31 December 2014, the statement of income and expenditure for the year then ended, statement of cash flows, notes comprising a summary of significant accounting policies, other explanatory notes and the statement by members of the committee.

## Committee's Responsibility for the Financial Report

The Committee of Country Arts (WA) Incorporated is responsible for the preparation of the financial report and has determined that the basis of preparation described in Note 1 is appropriate to meet the requirements of the Associations Incorporation Act WA and the needs of the members. The committee's responsibility also includes internal control as the committee determines is necessary to enable the preparation of a financial report that is free from material misstatement, whether due to fraud or error.

## Auditor's Responsibility

Our responsibility is to express an opinion on the financial report based on our audit. We have conducted our audit in accordance with Australian Auditing Standards. Those standards require that we comply with relevant ethical requirements relating to audit engagements and plan and perform the audit to obtain reasonable assurance whether the financial report is free from material misstatement.

An audit involves performing procedures to obtain audit evidence about the amounts and disclosures in the financial report. The procedures selected depend on the auditor's judgment, including the assessment of the risks of material misstatement of the financial report, whether due to fraud or error. In making those risk assessment, the auditor considers internal control relevant to the association's preparation of the financial report that gives a true and fair view, in order to design audit procedures that are appropriate in the circumstances, but not for the purpose of expressing an opinion on the effectiveness of the association's internal control. An audit also includes evaluating the appropriateness of accounting policies used and the reasonableness of accounting estimates made by the committee, as well as evaluating the overall presentation of the financial report.

We believe that the audit evidence we have obtained is sufficient and appropriate to provide a basis for our audit opinion.



### **Audit Opinion**

In our opinion, the financial report of Country Arts (WA) Incorporated presents fairly, in all material respects the financial position of Country Arts (WA) Incorporated as at 31 December 2014 and of its financial performance for the year ended in accordance with the accounting policies described in Note 1 to the financial statements, and the Associations Incorporation Act WA.

### **Basis of Accounting**

Without modifying our opinion, we draw attention to Note 1 to the financial report, which describes the basis of accounting. The financial report has been prepared to assist Country Arts (WA) Incorporated to meet the requirements of the Associations Incorporation Act WA. As a result, the financial report may not be suitable for another purpose.



---

Daniel Papaphotis CPA  
Registered Company Auditor  
Francis A. Jones Pty Ltd  
154 High Street  
Fremantle WA 6160  
Date: 19th March 2015



# Board of Management & Governance



## Directors

### Chair

**Kate Fielding – Individual**

**(Goldfields-Esperance)**

Kate Fielding builds creative platforms for intercultural conversations. She is a writer of narrative non-fiction, a cultural strategist and social change hairdresser. Kate has worked in the government, not-for-profit and private sectors. She is passionate about collaborative creative practice that is grounded in rigorous, locally-appropriate frameworks. She has worked throughout Australia, including several years living and working in very remote desert Australia. Kate has an ongoing involvement with the arts and cultural community in Jogjakarta, Indonesia. As part of her Churchill Fellowship she visited social change hairdressing salons around the world in 2013. She is based in Kalgoorlie, Western Australia. Kate is the Chair of Country Arts WA, and the President of Regional Arts Australia. Her work has been awarded a Sidney Myer Creative Fellowship, a Churchill Fellowship, the Dwight Prize and a Foundation for Young Australians Centenary Award. She has a Bachelor of Arts (Hons) from The University of Melbourne and a Bachelor of Creative Arts from the Victorian College of the Arts.

### Vice Chair

**Ross Beckett – Regional Performing Arts Venue**

**(Goldfields-Esperance)**

Ross Beckett has managed the Esperance Civic Centre for over four years and has been a Country Arts WA Director for the last three years. Ross came to the performing arts sector from a diverse background that includes six years in the Royal Australian Air Force, two years studying at the Western Australian Academy of Performing Arts and a career in commercial radio working in Northam, Bridgetown, Wollongong (NSW), Esperance, Albany and Launceston (TAS). Ross is also on the Management Committee for CircuitWest.



#### **Treasurer**

##### **Peter Rupp – Co-opted Director**

**(Perth)**

Peter Rupp (Bsc FCA FLWA) is a Chartered Accountant and currently practices as an Audit Partner with Deloitte in Perth. Peter was educated and commenced his working life at Deloitte in the UK with several periods of travel in Europe and the USA before settling in Perth with his family in 2003. He is a Fellow of the 2010 Leadership WA Program and in 2013 was elected as the WA representative onto the National Council of Chartered Accountants in Australia and New Zealand (CAANZ). Peter has a deep appreciation of the opportunities that exist in regional WA and believes that the Arts provides a means to enhance the development of community in the State. Peter is a classically trained musician, playing both piano and clarinet, and a passionate supporter of the arts.

#### **Secretary**

##### **Shane Colquhoun – Co-opted Director**

**(Perth)**

Shane Colquhoun was a professional dancer for 12 years in the UK, Germany and Australia, having completed his training at The Royal Ballet School, London. Following his retirement from full-time dance in 1984, he studied Arts Management at the Western Australian Academy of Performing Arts. Over the last 25 years, his arts management career has included positions within government and in the arts sector including General Manager positions with Western Australia's Deckchair Theatre and West Australian Ballet. In 2000, Shane joined the WA Department of Culture and the Arts in a range of senior roles, including Director, Arts Funding and Development. For 16 months in the lead up to the 2005 State General Election, he was seconded to the Minister for Culture and the Arts as Policy Advisor. Shane was the National President of the Australian Dance Council – Ausdance until 2006, a Director of Country Arts WA and until the end of 1997 was inaugural Chairperson of the Australia Council for the Arts' Dance Board, a position he held for three and a half years. Shane was the General Manager of the Black Swan State Theatre Company from March 2009 to December 2013.

##### **Natalie Jenkins – Professional Performing Arts Producer**

**(Perth)**

Natalie Jenkins is the General Manager of Black Swan State Theatre Company. Prior to commencing in this role in January 2014, Natalie ran her consultancy business, NJ Management for eight years, offering project management, strategic advice and consulting to the arts, business and community sectors. Through her consultancy, Natalie has worked with the Performing Arts Touring Alliance (PATA), Deakin University, Perth Fashion Festival, Country Arts WA, Stages WA, as well as a number of independent theatre producers. Natalie has also been lecturing in Arts Management at the Western Australian Academy of Performing Arts. Natalie has previously been General Manager of ThinIce (director Mathew Lutton's company), General Manager of Perth Theatre Company and General Manager of Theatre North in Launceston, which included managing the city's two performing arts venues. She has been a member of the Commonwealth Government's Playing Australia and Festivals Australia Committees, a member of the Healthway Board, including Chair of its Arts Advisory Committee, sat on the Tasmanian Arts Advisory Board, also chairing its Youth Sub-Committee and a steering committee member for the LOUD Festival (which later became known as the NOISE Festival), Australia's first national youth arts festival.

Natalie has chaired and been a member of a number of industry boards including Chair of the Blue Room Theatre in Perth, President of the Australian Performing Arts Centres Association (APACA), board member of the Australian Script Centre, Chairperson of Stages – the WA Playwrights Consortium and a member of the Western Australian Academy of Performing Arts (WAPPA) Industry Advisory Board.





#### **Fay O'Brien – Regional Community Organisation**

**(Goldfields-Esperance)**

Fay O'Brien is a retired teacher from Hopetoun on the south coast of Western Australia. She is a volunteer member of the innovative Ravensthorpe Regional Arts Council. She has organised successful local residencies for Indigenous author Kim Scott and Vietnamese author Carina Hoang, and was instrumental in bringing Annette Carmichael's *Ausdance* to Ravensthorpe where she joined the community in performing *Wheels of Fortune* a contemporary dance event in the Jerdacuttup Wheat Bin.

As a Director of Country Arts WA since 2010, Fay has learned the importance of the support Country Arts WA offers regional arts organisations and artists. Fay contributes, as a senior, to the Board, Touring Assistance Panel (giving regional WA access to a variety of performances) and on the Membership Working Party.

#### **Donna Malec – Regional Community Organisation**

**(Goldfields-Esperance)**

Donna Malec has 12 years experience in the arts industry across the Goldfields-Esperance region. Donna is currently the Chairperson of Artgold, the Arts and Culture Goldfields Association, and the Manager of the Goldfields Arts Centre. Donna is a strong advocate for arts and culture and clearly understands the importance and benefit that it contributes to regional communities. Donna is representing Artgold on the Country Arts WA Board.

#### **Keith Whenmouth - Regional Community Presenter**

**(Kimberley)**

Keith Whenmouth has spent most of his life in remote and very remote regions of Australia, New Zealand and the Pacific Islands. He has experienced first hand the challenges and benefits that face artists and communities that get involved in creating art in remote places. In NZ's South Island he was involved in a Trust that provided work space and business development support to artists and craft people in a rural community. In Queensland he project managed the early stages of the now 20 year old, and almost legendary, Tanks Arts Centre in Cairns. He also served as a Director and Chair on the board of JUTE Theatre Company. As an architect Keith has had extensive involvement in Public Art commissions including working with artists to develop concepts and coordinate installation. Keith also provided expert advice to a review of Queensland's State Public Art Policy.

Now living in Broome, Keith has continued his involvement in the arts through Kimberley Performing Arts Council where he serves as Vice Chair and through an ongoing involvement in architecture and public art.

#### **Andrea Gray – Regional Community Presenter**

**(Wheatbelt)**

A long-time advocate for community-based arts and cultural benefits; Andrea Gray has developed and facilitated opportunities throughout her region. As inaugural Chairperson of the Inspirational Community Arts Network located in Jurien Bay she ensured that her region has excellent governance and focused strategic direction to guarantee their future.

Andrea is currently employed by and representing the Jurien Bay Community Resource Centre and has actively engaged local residents in community projects such as the highly successful Contemporary Old Salts project which saw Andrea being a nominee in 2012 Citizen of the Year. Andrea has supported local and regional artists, providing opportunities, promotion, networks and encouraged development. Her achievements are accompanied with enthusiasm and the joy of building the social fabric of our rural and remote communities communicated through the arts.



### **Chris Budhan – Individual**

**(Mid West)**

Dr Chris Budhan is a creative industries manager, musician and music lecturer. As Manager Arts, Culture & Events at the City of Greater Geraldton, he is responsible for the City's community arts, placemaking and public art, events, Queen Elizabeth II Community Centre and Queens Park Theatre, and partnership with the Geraldton Regional Art Gallery. He has led the development and implementation of the City's arts and cultural policies and strategies. As outcomes against these strategies he has initiated the City's Artist Opportunities Program and Central Greenough Artist in Residence Program, and achieved a 30% increase in arts and cultural programming. Chris holds a doctorate in music from the University of Texas at Austin, an M.A. in Business from New York University, and a B.M. from McGill University. As a double bassist he has performed and recorded with jazz luminaries Tim Hagans, Rufus Reid, Pat LaBarbera, Jason Marsalis and others.

### **Chris Tan – Co-Opted Director**

**(Perth)**

Chris Tan is the Senior Research Associate at Gerard Daniels. Given his experiences, he supports the search process in a number of industries to identify executives in both leadership and technical functions. Prior to his role with Gerard Daniels, Chris spearheaded the engineering function of the Australian branch of a global recruitment firm focusing on the mining industry. Before this, Chris was responsible for building and leading the healthcare and pharmaceutical function for a boutique recruitment firm in Tokyo as well as heading the life-science practice for the Japanese branch of a well-known global recruitment firm. Originally from Perth, Chris has spent ten years in Japan focusing cross border searches before returning to Australia in 2012. He possesses a Bachelor's degree in Microbiology and Biochemistry (with Honours) from the University of Western Australia as well as post graduate qualifications in communications (Public Relations major) from Edith Cowan University.

### **Lynette Narkle – Co-Opted Director**

**(South West)**

Lynette Narkle is a highly respected performer and director of Indigenous theatre and film. She has been a pivotal force in theatre since the early days of Jack Davis' plays. She also worked for Screen West to increase the engagement of Indigenous filmmakers with screen culture. Lynette's involvement in the arts starts from the early 1970's.

### **Curtis Taylor - Co-Opted Director**

**(Perth)**

Curtis is a Martu man from the Western Desert from Parnngurr Community. He is a film writer/director currently studying Media and Communication at Murdoch University. Curtis was the recipient of the 2011 Youth Art Award at the WA Citizen of the Year ceremony and the Westfarmers Youth Scholarship. In 2012 Curtis returned from Nepal, where he shared two films and was awarded the Silver Drum at the NIFT. He also presented films at the Brazilian Anthropological Association conference in Brazil, where he spoke about the impact of social media on Indigenous communities and visited underprivileged areas. Curtis also won both the Youth and Caring for Country awards, as part of 2012 National Aborigines and Islanders Day Observance Committee (NAIDOC) celebrations in Port Hedland. Curtis is working on the Martu School Holiday Program running film workshops, as well as preparing the newsletter for the program. He is also works on various other media projects within RPM and has been involved with Country Arts WA as a Drug Aware YCulture Regional panellist.

**Country Arts WA would like to thank the outgoing Directors for their contribution to regional arts and the organisation:**

Kira Fong - Co-Opted Director (Kimberley)

Brittany Moxham - Co-Opted Director (Pilbara)

Lindsay Lovering - Co-Opted Director (Perth)

James Davies - Regional Community Organisation (Mid West)

Andrew Chambers - Regional Community Presenter (Kimberley)



# Role of the Board

The Country Arts WA Constitution requires that a Board of up to 10 people are elected from the organisation's membership by the members. The Board of Directors are representatives of the five membership categories. To ensure that regional representation remains high, the Constitution requires that a minimum 70% of elected Board members must be based in regional Western Australia.

The membership categories ensure that the Board is made up of regional arts peers who reflect the membership and the key operational structures of the organisation. All decisions about the allocation of the organisation's funds are recommended by the Finance Sub-Committee, the Touring Assistance Panel and the Regional Arts Development Panel, and are endorsed by the Board at regular meetings. The Board is ultimately responsible for the strategic planning, operations, management and performance of the organisation. In discharging this responsibility, the Board delegates authority to senior management whose role it is to manage the organisation in accordance with the directions and policies set by the Board. The Board monitors the activities of senior management in their performance of delegated duties.

Responsibilities of the Board include the following:

- \* Determining organisational strategies, policies and guidelines for the successful performance of the organisation in the present and the future;
- \* Monitoring overall performance and financial results and adopting annual budgets;
- \* Accountability to members;
- \* Ensuring that risk management procedures and compliance and control are in place and operate effectively;
- \* Monitoring the performance and conduct of senior management and ensuring adequate succession plans are in place; and
- \* Ensuring the organisation continually builds an honest and ethical culture.

## Board Structure

- \* In accordance with the Constitution the Board has up to 10 members elected by the organisation's membership. These members come from five different member categories;
- \* The Board is able to co-opt Directors with specialist skills and background;
- \* The Board itself elects office bearers that make up the Executive;
- \* Directors of the Board are elected for a three-year term and can then stand for re-election. Directors must stand down following two consecutive terms; and
- \* The Board delegates responsibility to a number of sub-committees in order to monitor the complexity of the organisation's operations. The Board makes appointment to these sub-committees based on Directors area of expertise and interest.





## Ethical Standards

The organisation established a Code of Conduct that addresses matters of integrity and ethical standards. All Directors and staff are expected to abide by the Code of Conduct at all times that includes behaviour in relation to:

- \* Organisational values
- \* Professional conduct
- \* Customer service
- \* Confidentiality and continuous disclosure
- \* Anti-discrimination and harassment
- \* Standards of workplace behaviour and equal opportunity
- \* Procedural fairness
- \* All Directors and staff are required to read and sign the Code of Conduct and submit a police clearance when they join the organisation.

## Financial Reporting

Country Arts WA has a Finance Sub-Committee whose role it is to supervise the ongoing financial management of the organisation. Its members are Peter Rupp (Chair), Kate Fielding, Shane Colquhoun and Ross Beckett. The organisation's membership appoints a suitably qualified external auditor at each Annual General Meeting. The auditing company for the 2014 period is Francis A Jones.

## Risk Management

The organisation is committed to identifying and managing areas of significant risk to protect the safety and interests of members, clients and staff. Arrangements currently in place include:

- \* Regular financial and program reporting
- \* Procedures to manage risks as set out in the organisation's Risk Management plan
- \* Comprehensive insurance
- \* Utilisation of specialist skills when required. The organisation's co-option policy is an example of this strategy.

## Board Performance

The performance of the Board is reviewed annually by the Executive. The efficiency, effectiveness and operations of the Board are continuously subject to informal monitoring by the Chair and the Board as a whole.

## Remuneration

Board membership is voluntary and no sitting fees are paid. All costs associated with Board meetings, including travel, accommodation and meals, are paid by the organisation.

Staff remuneration is reviewed annually and increases are based on performance appraisals and the organisation's ability to fund salary increases.





# Team

## Operations

Chief Executive Officer, Jessica Machin  
 General Manager, Paul Mac Phail  
 Operations Coordinator, Cathcart Weatherly  
 Operations Officer, Sarah Vaglivello  
 Operations Assistant, Tegan Morey  
 Business Development Manager, Adele Tan  
 Finance Officer, Suzanne Fielding

## Marketing

Marketing and Public Relations Manager,  
 Fiona McCaul  
 Marketing Officer, Gemma Robins  
 Marketing Officer, Matt McEwen

## Performing Arts Touring

Manager, Performing Arts Touring,  
 Philippa Maughan  
 Performing Arts Touring Officer,  
 Monique Boucher  
 Performing Arts Touring Officer, Caitlin Chessell  
 Performing Arts Touring Officer, Carla Steele  
 CircuitWest Audience Development Coordinator,  
 Dolores Kinsman

## Regional Arts Development

Regional Arts Development Manager,  
 Jessica Anderson  
 Regional Arts Development Officer, Hayley Dart  
 Regional Arts Development Assistant,  
 Tegan Morey

## Special Projects

Aboriginal Art Centre Hub Western Australia  
 Coordinator, Christine Scoggin  
 Aboriginal Art Centre Hub Western Australia  
 Support Officer, Laura Taylor  
 HARTZ Coordinator, Suzan Chesson  
 Focus Region Initiative Manager, Barb Howard  
 2014 Regional Arts Australia Summit: Arts &  
 Edges Artistic Director, Ben Fox  
 2014 Regional Arts Australia: Arts & Edges First  
 Nations Creative Producer, Gary Cooper  
 2014 Regional Arts Australia: Arts & Edges Young  
 People Creative Producer, Owen Hinton

## Staff farewelled in 2014

General Manager, Colleen Harris  
 Marketing and Public Relations Manager,  
 Kelly Jennings  
 Regional Arts Development Assistant,  
 Drew Wootton  
 Gascoyne in May Executive Officer,  
 Ivy Klassen-Glanzer  
 HARTZ Coordinator, Aoife Adamson  
 Aboriginal Art Centre Hub Western Australia  
 Communications Officer, Clea Tibbs-Johansson



# Internships



*Summit Volunteer Coordinator  
Jysae Hair. Photo taken as part of  
Humans of the Summit.*

## Jysae Hair

WA Academy of Performing Arts student Jysae Hair undertook her Industry Placement with Country Arts WA as part of her Bachelor of Arts (Arts Management) in 2014. The ten week secondment is designed to synthesise theory and practice and to provide Arts Management students with the opportunity to demonstrate their knowledge and skills acquired over the course.

As the timing of the secondment coincided with the delivery of the 2014 Regional Arts Australia Summit: Arts & Edges, Jysae worked closely with the event's project management team as the Summit's Volunteer Coordinator. This role saw Jysae implement a volunteer recruitment campaign, develop a volunteer management plan and coordinate over 100 event volunteers.

The Country Arts WA Board and staff were overwhelmed by Jysae's success in this position, and were delighted to see that Jysae immediately progressed into the professional workforce by taking on a position at Propel Youth Arts WA.



*Hosanna Butt with her artwork.  
Photo by Esperance  
Community Arts.*

## Hosanna Butt

Country Arts WA hosted Wongutha CAPS student Hosanna Butt in her Year 12 work experience placement through the Aboriginal Employment Program in July 2014. From Jarlmadangah, an Aboriginal community of 80 people near Derby, Hosanna moved to Esperance in 2012 when she received a placement at the school in Year 10. As part of her studies, Hosanna took up a work placement at Esperance Community Arts to complete a Certificate II in Business, which led to her week-long placement with Country Arts WA.

Hosanna made great contributions to each of our teams during her week with us, including collating historical presenter data for the Performing Arts Touring team, doing some research for our Business Development Manager and contributed to an article in the Aboriginal Art Centre Hub of WA e-news. Our Chief Executive Officer Jessica Machin and our Regional Arts Development Manager Jessica Anderson attended Hosanna's graduation in Esperance.



# Supporters

## Government

### The State of Western Australia

Country Arts WA receives funds from the State of Western Australia through the Department of Culture and the Arts and Lotterywest.



Government of **Western Australia**  
Department of **Culture and the Arts**



### Australian Government

The Regional Arts Fund is an Australian Government initiative supporting the arts in regional, rural and very remote/isolated Australia. Country Arts WA manages the program in Western Australia.



**Australian Government**  
**Regional Arts Fund**

---

## Corporate Partner



---

## Service Partners





## Media Partners



## Funding Partners



## Country Arts WA is a member of:

Regional Arts Australia [www.regionalarts.com.au](http://www.regionalarts.com.au)  
Blue Heeler Network [www.cyberpaddock.net.au](http://www.cyberpaddock.net.au)  
The National Compact [www.nationalcompact.gov.au](http://www.nationalcompact.gov.au)  
WA Chamber of Arts and Culture [www.cacwa.org.au](http://www.cacwa.org.au)  
Australian Performing Arts Centres Association [www.apaca.com.au](http://www.apaca.com.au)  
Performing Arts Alliance [www.pata.com.au](http://www.pata.com.au)  
CircuitWest [www.circuitwest.com.au](http://www.circuitwest.com.au)  
Live Performance Australia [www.liveperformance.com.au](http://www.liveperformance.com.au)



# COUNTRY+ ARTS+WA=

**LOCATION**

Level 1 King Street Arts Centre  
357 Murray Street  
Perth WA 6000

**POSTAL**

PO BOX 7012  
CLOISTERS SQUARE  
PERTH WA 6850

**PHONE** 08 9200 6200 **FAX** 08 9200 6201  
**REGIONAL WA FREECALL** 1800 811 883  
**WEB** [www.countryartswa.asn.au](http://www.countryartswa.asn.au)  
**EMAIL** [info@countryartswa.asn.au](mailto:info@countryartswa.asn.au)