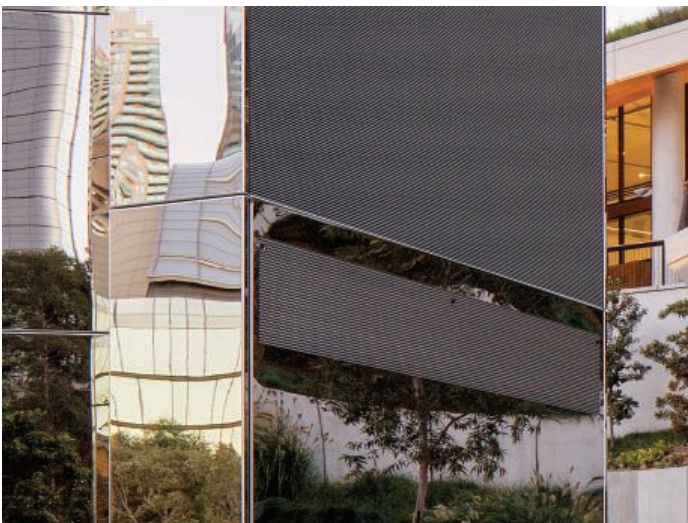


MAJOR PROJECT

# DARLING HARBOUR LIVE



Stoddart, as part of the enormous Darling Harbour Live re-development in 2017, were engaged by Lend Lease to manufacture and install 19 'sign blades' along the central boulevard between the International Convention and Exhibition centres, and the Tumbalong Park precinct.

Scattered along the boulevard in random groups of 2s and 3s, the blades stand 7 metres tall and 2 metres wide each and feature a mirror-finish designed to reflect the lights and built environment of the Harbour. Primarily serving to house large LED display screens for wayfinding and entertainment purposes, the stunning visual effect they create in their surrounds makes them as much sculptural as their purpose is functional.

Utilising a structural steel frame to mount speakers, power outlets, and the large LED displays, and clad in solid and perforated 316 stainless steel panels, the sign blades are fantastic examples of Stoddart's quality workmanship, attention to detail, and capacity for large-volume architectural metalwork in high profile settings.

P: 1300 557 654  
W: [stoddartinfrastructure.com.au](http://stoddartinfrastructure.com.au)  
E: [info@stoddartinfrastructure.com.au](mailto:info@stoddartinfrastructure.com.au)

Copyright Stoddart Infrastructure. All rights reserved.

