

# HAZARD TO CYCLISTS

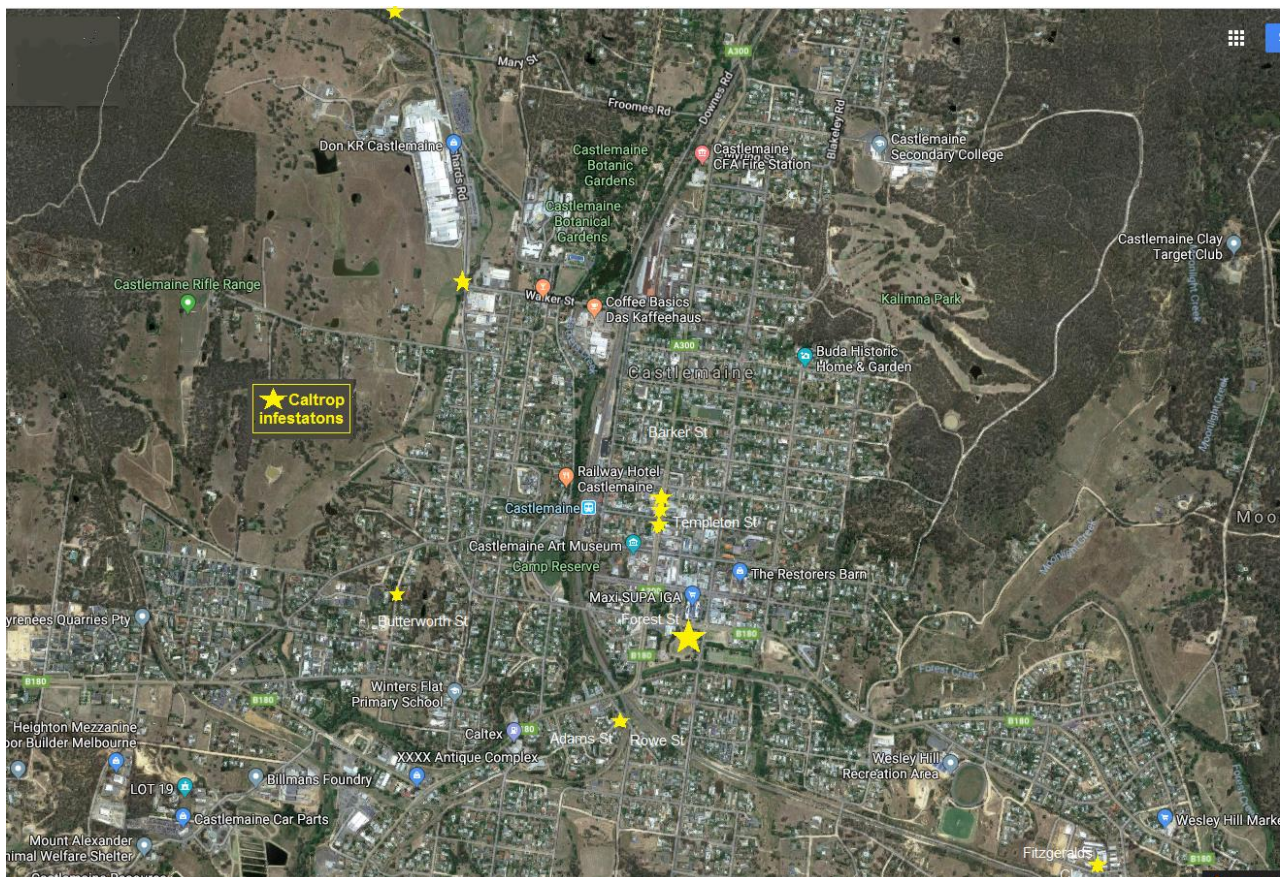


Ern Perkins castlemaine flora.net.au

**Caltrop is a noxious weed with prickles that puncture tyres, stick in shoes and cause injuries**

**To prevent Caltrop becoming widespread in Castlemaine:**

- Avoid infested areas (see map), as walking, riding or driving through them spreads seeds to other areas
- Pull or cut out plants before they drop their prickles
- Report new infestations to Mount Alexander Shire Council
- Check shoes and tyres for prickles before leaving an infested area
- Destroy seeds or put in a secure bag in the bin



For further information contact Connecting Country ([www.connectingcountry.org.au](http://www.connectingcountry.org.au))