

# Works Notice

December 2020 – January 2021

## Northern Tunnel Portal construction update

Site establishment and preparation for piling is underway at the Northern Tunnel Portal construction site. In the coming months, activity at the site will increase as piling and the relocation of underground services start.

### Piling to start for the Northern Tunnel Portal

During December, installation of bored piles is expected to commence. Approximately 430 piles will stabilise the ground prior to excavation of the portal.

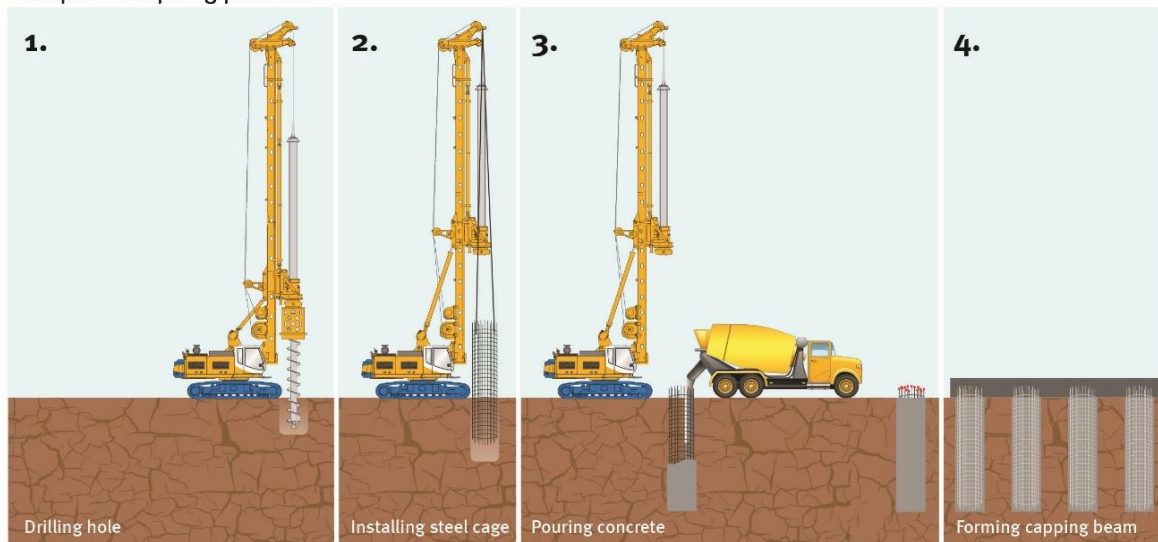
Piling is expected to be undertaken between December 2020 and mid-2021.

Bored piling involves:

1. Drilling a hole into the ground using a piling rig
2. Installing steel reinforcement cage into the hole
3. Filling the lining with concrete to form a pile and breaking back the tops of the piles to the required length with jackhammers
4. Linking the tops of the piles with a concrete beam to hold them in place for greater stability.

The graphic below shows the steps in the piling process.

Steps in the piling process



### What to expect

- Construction activity in the area with potential for an increase in noise, dust, vibration, truck movements and workers.
- Construction impact mitigation activities such as street sweepers, water suppression and hoarding installation.
- Work is subject to relevant approvals and suitable weather conditions.
- Temporary pedestrian and traffic changes.
- Standard construction times are **6:30am to 6:30pm, Monday to Saturday**, however work will occur outside of these hours due to traffic permits, safety requirements and construction methodology.

## Northern Tunnel Portal construction site

Within the rail corridor at Normanby



### Site establishment and start of piling Ongoing

- Installing site offices, facilities and fencing around the work area
- Surveying the construction site and installing survey equipment
- Installing a workforce pedestrian access via Victoria Park
- Relocating an underground water service within the rail corridor
- Installing piles which will support the portal structure
- Breaking back the top of the piles using jackhammers and building the concrete capping beam
- Increased truck movements
- Delivery of oversized plant and equipment.

## Sewer relocation and shared user path closure



Under the rail corridor at Normanby and within Victoria Park

### Site establishment and open-cut trenching

From December 2020 for approximately four months

- Delivering plant and equipment
- Trimming vegetation along haulage route
- Installing temporary fencing to establish work areas and access routes in Victoria Park
- Cutting a section of the footpath and excavating a trench approximately 300 metres along the shared user path and within Victoria Park
- Night work on the Inner City Bypass (ICB) to investigate underground services
- Night work on Gregory Terrace to prepare for the diversion of the shared user path
- Closure of the shared user path and installation of temporary cyclist facilities on Gregory Terrace and College Road from December 2020 to late January 2021.

Please refer to the sewer main relocation notification (#228), delivered on 30 November 2020 for more details.



### Standard construction hours

Standard construction hours are 6:30am to 6:30pm, Monday to Saturday.



### Out of hours works

Some activities will be completed out of normal construction hours. Nearby residents will be notified in advance via letterbox drop.

## Extended work periods within rail corridor

Work will be carried out in the rail corridor during the following periods:

- Saturday 5 December to Sunday 6 December
- Monday 28 December to Tuesday 29 December
- Saturday 23 January to Monday 25 January
- Saturday 30 January to Monday 1 February.

A separate notification will be distributed about this work.



- Rail corridor
- Northern portal structure
- Work area
- Underground sewer alignment
- TBM tunnel alignment
- Site offices
- Construction site access
- Sewer relocation work areas

1800 010 875

[crossriverrail@cbgujv.com.au](mailto:crossriverrail@cbgujv.com.au)

[crossriverrail.qld.gov.au](http://crossriverrail.qld.gov.au)



If you need an interpreter to assist you in understanding this document, please call the Translating and Interpreting Service (TIS National) on 131 450 and request to be transferred to Multicultural Affairs Queensland on 13 QGOV (13 74 68)

