

# Works Notice

February 2021

## Northern Tunnel Portal construction update

Piling is now underway at the Northern Tunnel Portal construction site with more than 400 piles scheduled to be installed within the rail corridor by mid-2021.

Site establishment, service relocation and piling activities will continue at the site throughout the month.

### Northern Tunnel Portal construction site

Within the rail corridor at Normanby



#### Site establishment and service installation

- Installing site offices and facilities
- Relocating an underground water service within the rail corridor.

#### Ongoing

#### Piling and associated activities

Until mid-2021

- Delivery of oversized plant and equipment
- Installing piles which will support the Northern Tunnel Portal structure
- Breaking back the top of the piles and building the concrete capping beam
- Excavation and removal of materials and equipment.

### Sewer relocation

Under the rail corridor at Normanby and within Victoria Park



#### Excavation, microtunnelling and construction of service pits

Until April 2021

- Delivering plant and equipment
- Excavation of entry and exit pits for microtunnelling
- Microtunnelling to install the new underground service under the rail corridor and ICB
- Concreting to construct new service access pits
- Decommissioning of the existing sewer main.

Please refer to the sewer main relocation notification (#228), delivered on 30 November 2020 for more details.



#### Standard construction hours

Standard construction hours are 6:30am to 6:30pm, Monday to Saturday.

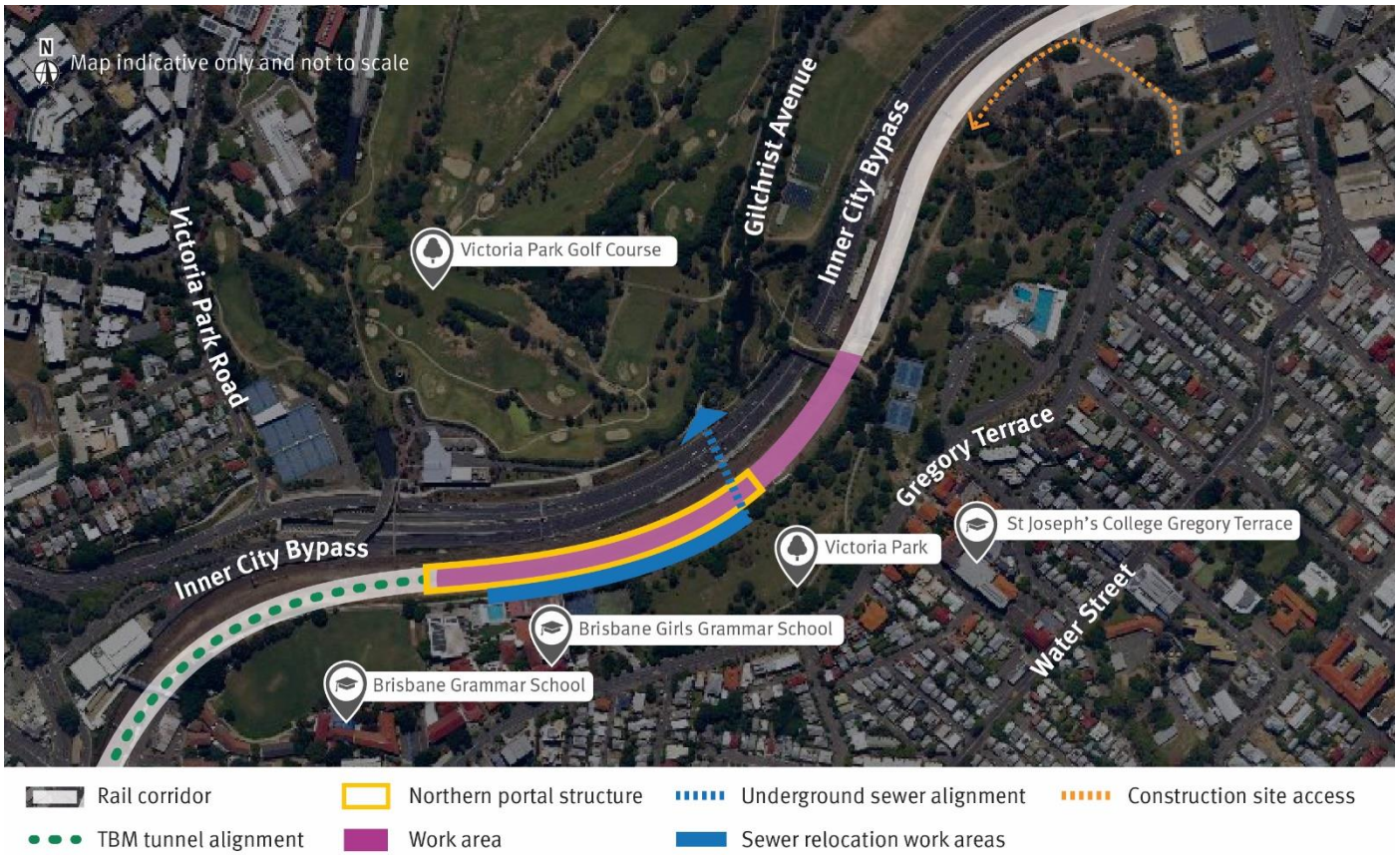


#### Out of hours works

Some activities will be completed out of normal construction hours. Nearby residents will be notified in advance via letterbox drop.

## What to expect

- Construction activity in the area with potential for an increase in noise, dust, vibration, truck movements and workers.
- Construction impact mitigation activities such as street sweepers, water suppression and hoarding installation.
- Work is subject to relevant approvals and suitable weather conditions.
- Temporary pedestrian and traffic changes.
- Standard construction times are **6:30am to 6:30pm, Monday to Saturday**, however work will occur outside of these hours due to traffic permits, safety requirements and construction methodology.



Map: Northern Tunnel Portal construction area

☎ 1800 010 875

✉ [crossriverrail@cbgujv.com.au](mailto:crossriverrail@cbgujv.com.au)

🌐 [crossriverrail.qld.gov.au](http://crossriverrail.qld.gov.au)



If you need an interpreter to assist you in understanding this document, please call the Translating and Interpreting Service (TIS National) on 131 450 and request to be transferred to Multicultural Affairs Queensland on 13 QGOV (13 74 68)

