

Works Notice

March 2021

Southern Area construction update

Excavation of the Boggo Road station box is approximately 80% complete and installation of canopy tubes, which provide ground support for the station cavern, is ongoing.

In the Southern Tunnel Portal works area, piling activities, utilities relocation and site establishment continues.

Boggo Road station construction site

Construction activities

Activities on site include:

- Excavation, earthworks and associated haulage
- Installing rock anchors, soil nails, shotcreting and ground support
- Canopy tube installation and associated activities
- Delivery of two tunnel excavators for cavern excavation
- Installation of fencing along the busway
- Delivery of machinery, equipment and materials
- Continue installing reinforcement and concrete for the station structure
- Installation of traffic barriers on Joe Baker Street.

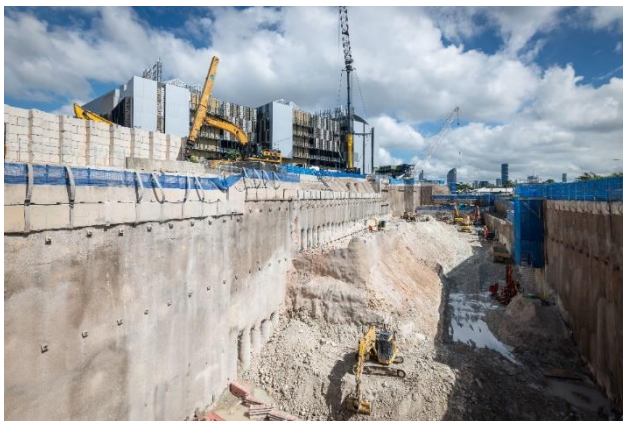


Image 1. Work continues on the Boggo Road station box

Work hours

The Boggo Road site is operational 24 hours a day, 7 days a week. Out of hours work is required due to traffic permits, safety requirements and construction methodology, with works including (but not limited to):

- Works associated with station box excavation such as earthworks, plant movements, drilling, anchoring and shotcreting
- Installation of canopy tubes
- Concrete and over-sized equipment deliveries.

Additional notification will be provided prior to out of hours work. Work is subject to relevant approvals and weather conditions.

#299

Survey, service and ground condition investigations

Throughout March, the team will investigate and survey underground utilities including power, water, sewer and telecommunications in the Southern area and within the Boggo Road precinct. Investigation activities will include:

- Survey, CCTV inspections and pressure cleaning of water and sewer infrastructure
- Geotechnical and soil investigations using truck-mounted drilling rigs
- Utility investigation and reinstatement activities.

Utility relocation work will continue, including Telstra and sewer and stormwater infrastructure on Kent Street, Railway Terrace and Pound Street

Interruptions to water, power, telecommunications, and gas supply

Some work may require temporary interruption to services. Service providers will notify of any planned interruption, where required. Outages can also be monitored at:

- **Energex:** energex.com.au/home/power-outages/planned-maintenance-outages
- **Telstra:** outages.telstra.com.au
- **Queensland Urban Utilities (QUU):** urbanutilities.com.au/faults-and-interruptions

Weekend work in the rail corridor: Dutton Park and Park Road stations

From 2:00am Saturday 20 March to 3:00am Monday 22 March 2021, work will be carried out in the rail corridor.

Details of work

- Survey and installation of monitoring points
- Fencing near Dutton Park station
- Underground rock and soil investigations
- Directional drilling for combined service route
- Inspection of underground pipe and conduit
- Excavation and installing pits, pipe and troughing
- Installing concrete foundations for signal boxes.

This work may include increased levels of localised noise, lighting and dust from the use of heavy machinery.

Extended works will also take place during a rail closure over the Easter long weekend and school holidays from Friday 2 to Wednesday 7 April. Detailed notification for these works will be provided in advance.

Southern Tunnel Portal Works Area

Construction activities

Ongoing activities on site include:

- Site facilities and office establishment
- Excavation, earthworks and associated haulage
- Installing permanent site fencing and gates
- Continuing drilling and pouring piles including pile break back
- Delivery of machinery, equipment and materials
- Continuing utility relocation work including Telstra and sewer and stormwater infrastructure on Kent Street, Railway Terrace and Pound Street
- Installing rail signalling within the rail corridor
- Installing a water connection, drainage and stormwater work on Kent Street.

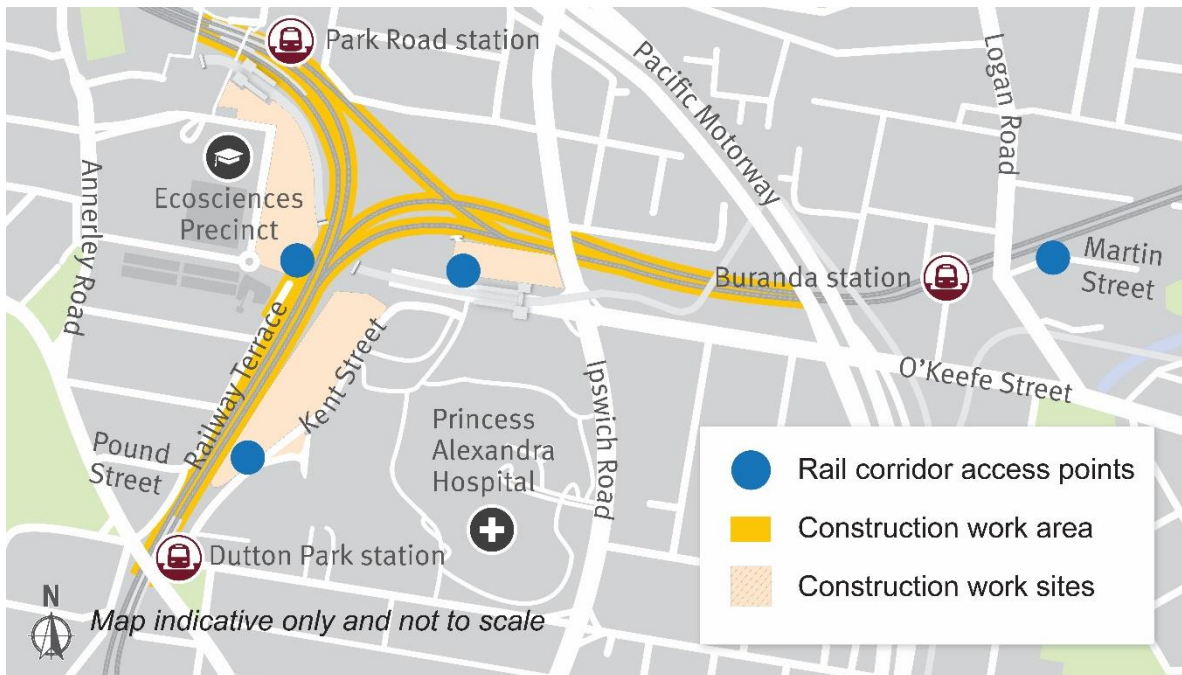


Image 2.
Map showing
work areas
and access
points

What to expect

- Construction activity in the area including the use of heavy machinery with the potential for an increase in noise, dust, vibration, truck movements and workers.
- Temporary lighting to support out of hours work.
- Intermittent maintenance activities.
- Construction impact mitigation activities such as street sweepers, water suppression and fencing installation.
- Work is subject to relevant approvals and suitable weather conditions.
- Canopy tube installation and support activities undertaken 24 hours a day 7 days a week.
- Temporary changed pedestrian access and traffic conditions including lane closures on Railway Terrace, near Kent Street and within the Boggo Road precinct.
- Standard construction times are **6:30am to 6:30pm, Monday to Saturday**, however work will occur outside of these hours due to traffic permits, safety requirements and construction methodology.
- Workers may arrive onsite one hour prior to the work start times to prepare for the shift's activities.
- Every effort will be made to keep disruption to a minimum for nearby residents and businesses.

1800 010 875

crossriverrail@cbgujv.com.au

crossriverrail.qld.gov.au



If you need an interpreter to assist you in understanding this document, please call the Translating and Interpreting Service (TIS National) on 131 450 and request to be transferred to Multicultural Affairs Queensland on 13 QGOV (13 74 68)



☎ 1800 010 875

✉ crossrerrail@cbgujv.com.au

🌐 crossrerrail.qld.gov.au



If you need an interpreter to assist you in understanding this document, please call the Translating and Interpreting Service (TIS National) on 131 450 and request to be transferred to Multicultural Affairs Queensland on 13 QGOV (13 74 68)

