

Works Notice

June 2021

Roma Street station construction update

Excavation for both the new station entry and services building shafts is now underway. Take a look at the image below for an update on our progress across the Roma Street station construction site.

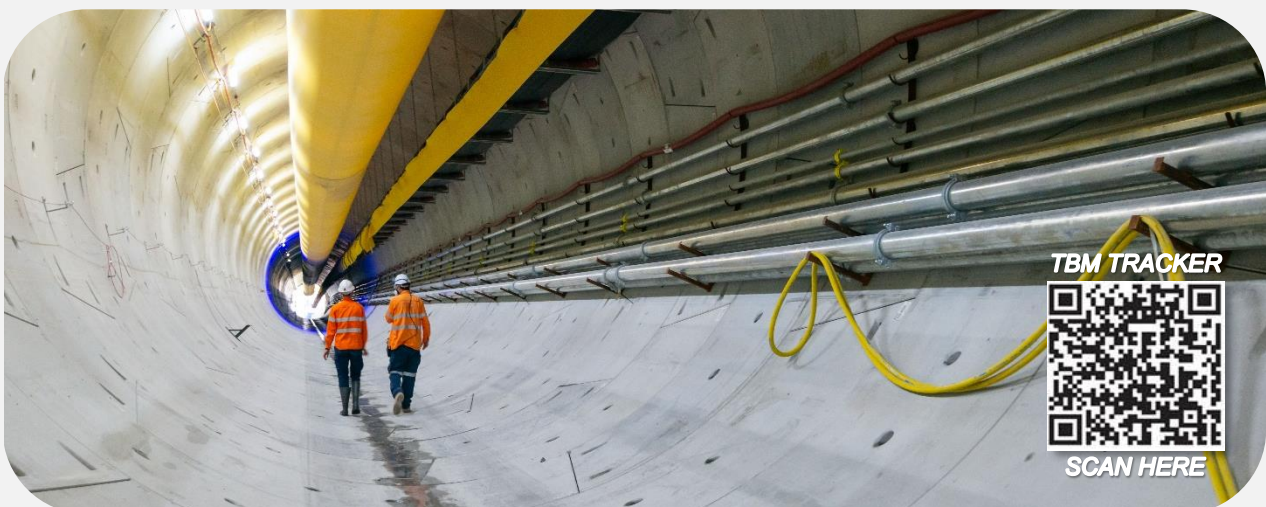
Our underground team reached a milestone in May, having now excavated the entire 280m length of the underground cavern. We will now focus on removing the bottom section of the station cavern, also known as the bench, before the Tunnel Boring Machines (TBMs) arrive in the coming months.



Excavation progress at the Roma Street station construction site

TBMs on their way to Roma Street

Cross River Rail's TBMs have now crossed under the Brisbane River at Kangaroo Point and are about to reach the Albert Street construction site. **Scan the QR code to track the TBMs as they continue their journey towards Roma Street.**



New tunnel constructed by Cross River Rail TBM Else

Station building site

Opposite Makerston Street



Excavation and ground support

Ongoing

- Mobilising and installing a tower crane to support excavation. Please see the tower crane installation notification (**#329**) now available on the Cross River Rail Roma Street station webpage for more information.
- Excavating the shaft, installing ground support anchors and shotcrete.
- Loading and removing excavated material with trucks.
- Excavating, concreting and installing micro-piles beneath the Inner Northern Busway.

Some activities in the new station building construction area will be undertaken outside of standard construction hours. Activities include excavating and transporting material from site, installing ground support anchors and shotcrete within the shaft. More information will be provided to surrounding businesses and residents before night work starts.

Services building site

Opposite Garrick Street



Excavation and ground support

Ongoing

- Excavating the shaft and progressively installing ground support anchors and shotcrete.
- Loading and removing excavated material with trucks.

Some activities in the new services building construction area will be undertaken outside of standard construction hours. Activities include excavating and transporting material from site, installing ground support anchors and shotcrete within the shaft. More information will be provided to surrounding businesses and residents before night work starts.

Tunnelling site

Acoustic shed, corner of Roma Street and Parkland Boulevard



Underground excavation

Ongoing

- Excavating passenger access tunnels and the station cavern.
- Loading and removing excavated material with trucks.
- Concreting work to prepare for arrival of the TBMs.
- Intermittently controlled blasting within the station cavern and adits.

Local streets

Roma Street between Countess Street and Parkland Boulevard



Site establishment and services inspection

Ongoing

- Groundwater monitoring.
- Inspecting and relocating underground services around the Roma Street construction site.

What to expect

- Construction activity with potential for an increase in noise, dust, vibration, truck movements and workers.
- Construction impact mitigation activities such as street sweepers, dust suppression and hoarding installation.
- Temporary traffic and pedestrian changes on Roma Street and surrounding streets.
- Work is subject to relevant approvals and suitable weather conditions.

Work hours



Standard construction hours

Standard construction hours are 6:30am to 6:30pm, Monday to Saturday.



Out of hours works

Some activities will be completed out of normal construction hours, 6.30pm to 6.30am, due to traffic permits, safety requirements and construction methodology. Nearby residents will be notified in advance via letterbox drop or a poster in the apartment building mail room.



24 hours

Tunnelling and tunnelling support activities are undertaken