

# Works Notice

June 2021

## Woolloongabba station construction update

Work is progressing on all fronts at the Woolloongabba worksite. Concreting and steel placement is underway in the fully excavated station box. Tunnel boring machines (TBMs) have achieved a major milestone, excavating under Kangaroo Point and Brisbane River and nearing the half-way point. Roadheaders are south of the Pacific Motorway as they tunnel to the Boggo Road station site.



View from inside the front of TBM 1 Else



Underground tunnel view from Woolloongabba towards the new Boggo Road station

### Details of works

Activities on site during June include:

- Woolloongabba station construction work such as installing formwork, fixing reinforcement steel and placing concrete
- TBM 1 *Else* and TBM 2 *Merle* tunnelling continues towards the Northern Tunnel Portal at Spring Hill
- Roadheader excavation and rock hammering in the mined tunnels running south from Woolloongabba to Boggo Road
- 24-hour cross passage excavation in the TBM and mined tunnels
- Excavated spoil is being conveyed from tunnel operations to the acoustic spoil shed located at the Woolloongabba worksite
- 24-hour assembly of formwork for concreting work in the cavern and mined tunnels
- Daily and out-of-hours oversized equipment, precast segments and tunnelling machine deliveries.

### What to expect

Potential noise, dust and vibration from the following work may affect neighbours. Every effort is made to minimise impact as much as possible:

- Temporary lighting for out-of-hours work in the station box and decline ramp, which is used to transport materials from the surface. Some light will be noticeable from the surface.
- TBM operation and support including spoil removal via the conveyor to the acoustic shed, where it is stored for transport
- Removal of excavated material during approved haulage hours by trucks, using designated routes. Dust suppression is undertaken regularly by water trucks on site and at access gates
- Ongoing excavation underground for 24-hour cross passage excavation

Work is subject to relevant approvals and suitable weather conditions.

**Construction hours**



**Standard construction: 6:30 am – 6:30pm**  
Monday to Saturday.



**Out of hours work: 6:30pm – 6:30am**  
Some activities can be completed outside of standard construction hours per the project's conditions of approval. Register for weekly email updates. See overleaf.



**Tunnelling and support activities**  
24 hours a day, 7 days per week.  
Excluding peak hours Monday to Friday between 7:00am – 9:00am and 4:30pm – 6:30pm.

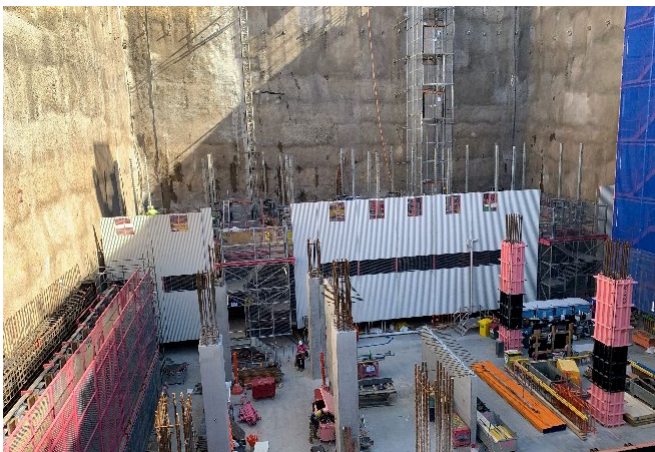
**Woolloongabba out-of-hours work**

The majority of works now underway at the Woolloongabba site are classed as *tunnelling and support activities*, which are undertaken 24/7.

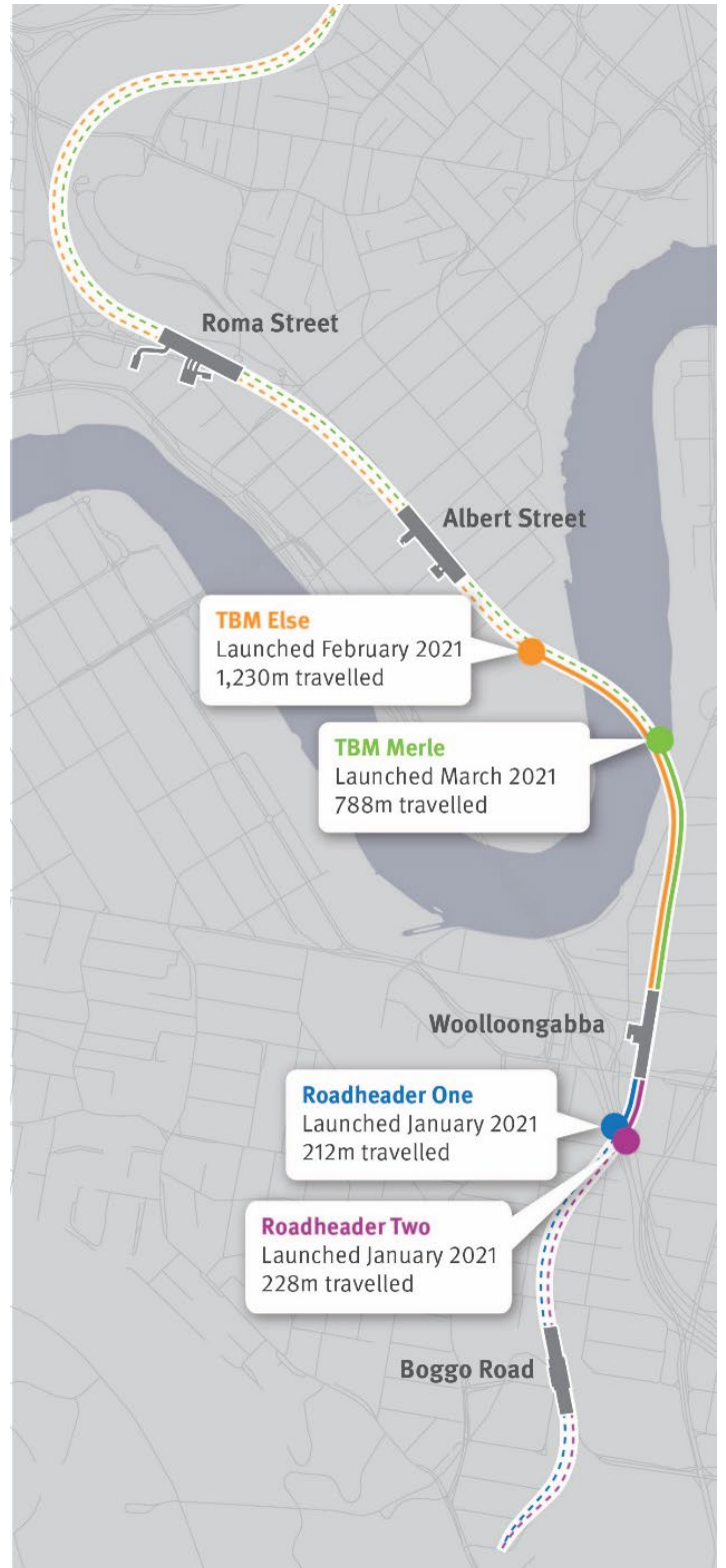
Throughout June there will be some formwork being built at the surface due to the large-scale size of the pieces as part of the roadheader tunnels as well as standard tunnelling activities.



TBM tunnelling works are well underway



Work in the Woolloongabba station box is progressing



Track the TBMs and roadheaders by following this QR code!

