

# Works Notice

July 2021

## Road closure – Kennerley Street Sandgate

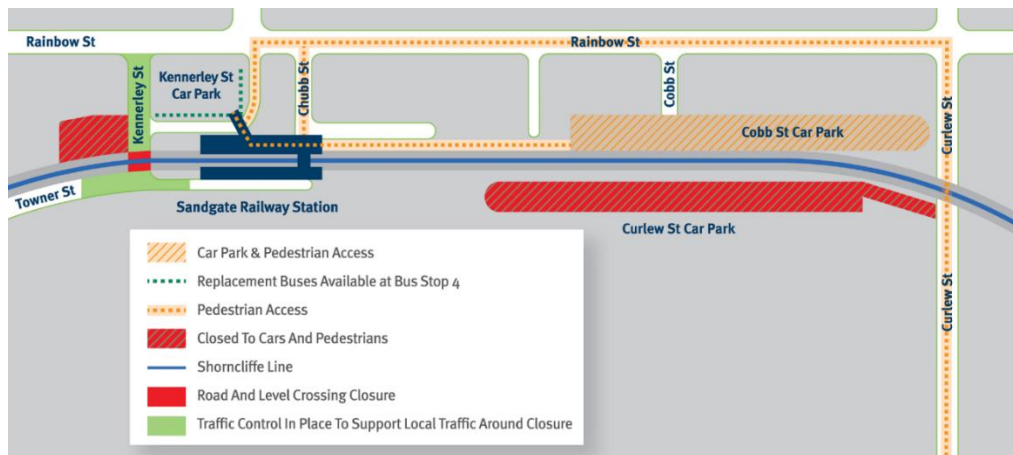
Hitachi Rail is continuing construction work along the Shorncliffe Line to deliver Brisbane's new railway signalling system as part of the Cross River Rail Project.

### Details of work

Service investigation and directional drilling to excavate cable routes underneath the road and rail line will take place from **11pm on Friday 30 July to 5am Monday 2 August** near Sandgate station.

### What to expect

The **road and rail crossing at Kennerley Street, Sandgate will be closed to traffic while these works are undertaken**. Detours will be in place via Adams Street, Deagon. Buses and taxis will have access to the station via the corner of Kennerley and Rainbow streets.



### What to expect if you live alongside the rail corridor

Residents along the rail corridor may see and hear dust and noise associated with the use of machinery and equipment (including excavators and vacuum trucks), and mobile lighting towers in work areas during night works. To minimise impacts, environmental controls will manage noise and dust, and all workers will be briefed on key community and environmental considerations.

### What to expect if you're a rail customer

Buses are replacing trains from the first train on Saturday 31 July to the last train Sunday 1 August. Plan your journey by downloading the MyTransLink app, visiting [translink.com.au](https://translink.com.au) or calling 13 12 30.

### Subscribe to receive updates

To keep up-to-date with local works, subscribe to updates at [crossriverrail.qld.gov.au](https://crossriverrail.qld.gov.au) and select **ETCS**.



1800 010 875



[etcsinfo@hitachirail.com](mailto:etcsinfo@hitachirail.com)



[crossriverrail.qld.gov.au](https://crossriverrail.qld.gov.au)



If you need an interpreter to assist you in understanding this document, please call the Translating and Interpreting Service (TIS National) on 131 450 and request to be transferred to Multicultural Affairs Queensland on 13 QGOV (13 74 68)

