

# Works Notice

September 2021

## Construction update Mayne Yard North

In August 2021, installation of foundations and masts for overhead electrical lines commenced, along with the placement of structural steel for new train crew facilities and buildings. In September 2021, works will continue on the construction of the new rail bridge over Breakfast Creek.

### Details of work

During September 2021, the following activities are scheduled to occur between 6:30am and 6:30pm, Monday to Saturday, weather and construction conditions permitting:

- Early works and site preparation for a new rail bridge over Breakfast Creek including commencement of rock platform for piling activities
- Installation of foundations and masts for overhead electrical lines
- Earthworks and installation of stormwater drainage
- Placement of structural steel for new train crew facilities and buildings
- Continuing installation of new stabling yard perimeter security fencing
- Continuing installation of new public utilities (power, water and sewer) to accommodate new train crew facilities
- Piling and concrete works for retaining walls, necessary for the construction of new access roads and overpasses
- Pier protection for existing rail overpasses within Mayne Yard
- Ongoing installation of cable routes and pits within the rail corridor
- Surveying and investigating underground services, such as water, electricity and gas.

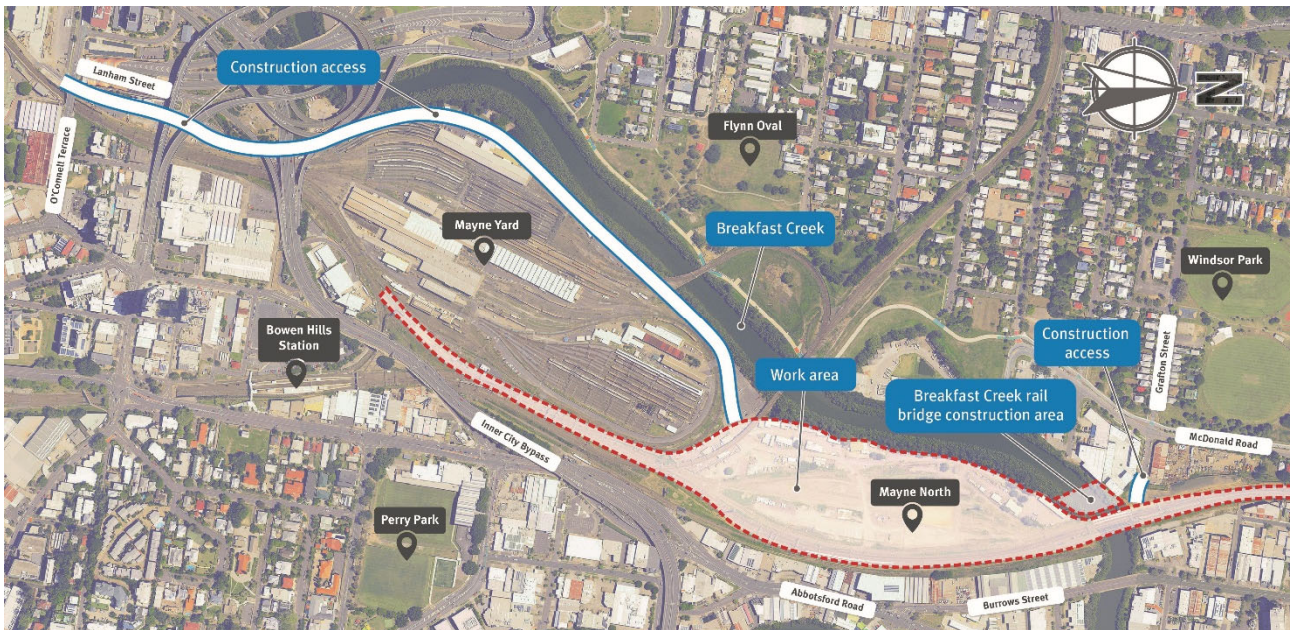
### Out of hours work

Additional activities will occur outside the project's normal working hours, but are timed to take place within planned track closures, as outlined below:

Location	Date and hours of work	Type of work
Mayne Yard, Bowen Hills	Intermittently between 6:00pm and 6:30am throughout September 2021	<ul style="list-style-type: none"> <li>• Concrete works including placement of formwork, steel fixing and concrete pours</li> <li>• Ground improvement and retaining wall piling</li> <li>• Removal of spoil and placement of steel cages and liners into place</li> <li>• Installation of conduits and pulling new cables</li> <li>• Track work and maintenance.</li> </ul>

**Cross River Rail will transform the way we travel to, from, and through Brisbane in the future. But right now, construction means disruption to train services. Sign up to receive updates at our website and use the TransLink Journey Planner at [translink.com.au](https://translink.com.au), call 13 12 30 or download the MyTransLink app to plan your journey.**

## Mayne Yard North access and work areas

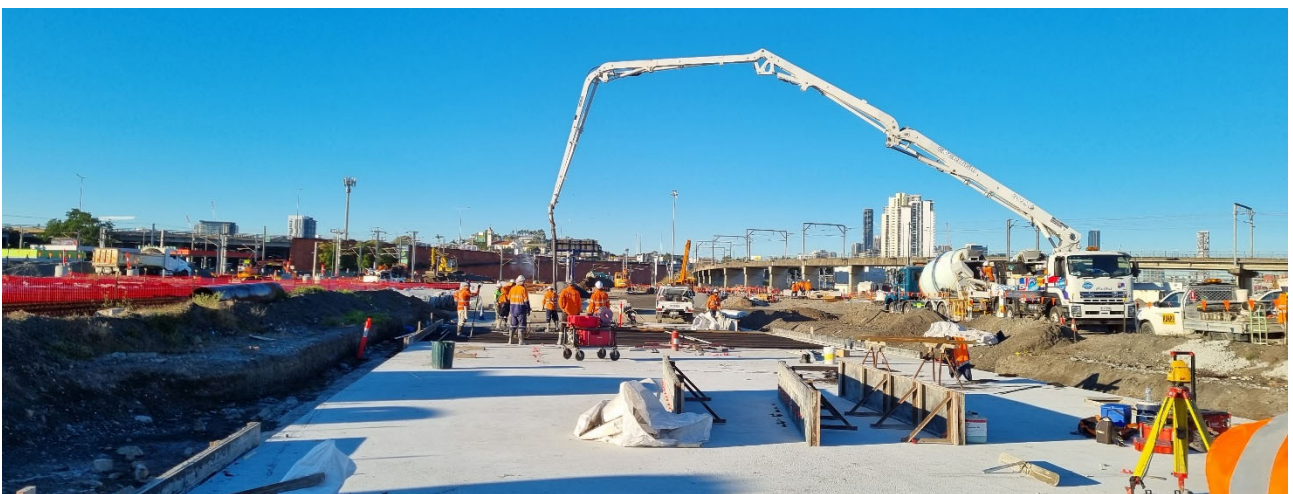


### What to expect

During these works you may notice some intermittent disruptions such as:

- Light vehicles, trucks and machinery including excavators, augers, vacuum trucks, piling rigs, concrete trucks, small power tools, drills, saws, minor vibrating equipment and mobile lighting towers to light the work areas at night
- Changes around your local area such as construction vehicles, traffic management signs and personnel
- Delivery trucks and workers' vehicles entering Mayne Yard North via the existing access road at Lanham Street, Bowen Hills and Grafton Street, Windsor
- Some increased levels of noise, vibration and dust associated with the use of heavy machinery and equipment
- During construction of the new rail bridge, a section of Breakfast Creek near Grafton Street, Windsor will be temporarily closed to vessels until July 2022
- The construction area boundaries will be marked with buoys on the water within Breakfast Creek.

We appreciate your patience during construction and will continue to update you as work progresses.



*Load transfer plate concrete pour within Mayne Yard North – August 2021.*