

# Works Notice

September 2021

## Changes to traffic conditions – Kennerley Street

Hitachi Rail is continuing construction work along the Shorncliffe Line to deliver Brisbane's new railway signalling system as part of the Cross River Rail Project.

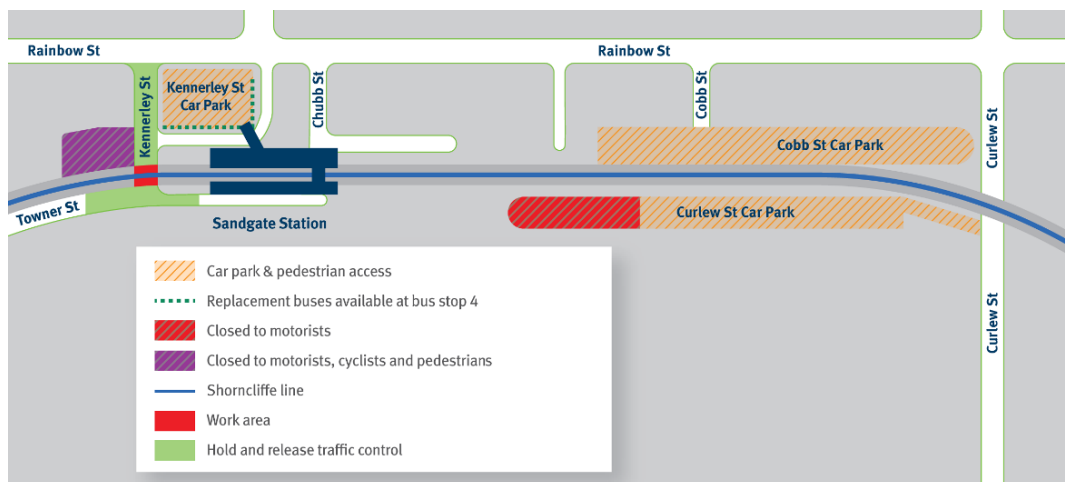
### Details of work

Under road drilling to prepare for the installation of cabling will take place between **6am and 6pm Saturday 18 and Sunday 19 September 2021** near Sandgate station.

### What to expect

Hold and release traffic control will guide motorists, pedestrians and cyclists around works **near the Kennerley Street crossing between 6am and 6pm on both days**.

The carpark (corner of Towner and Kennerley streets) shown in purple on the map below, will be closed to cars and bikes between 6am Saturday 18 and 6pm Sunday 19 September 2021. Please remove cars and bikes before this time.



### What to expect if you live alongside the rail corridor

Residents along the rail corridor may experience an increase in dust and noise associated with the use of machinery and equipment, and an increase in vehicle movements. To minimise impacts, environmental controls will manage noise and dust, and all workers will be briefed on key community and environmental considerations.

### What to expect if you're a rail customer

Cross River Rail will transform how we travel to, from, and through Brisbane in the future. But building Cross River Rail means changes to travel and transport services during construction. **Plan your journey by downloading the MyTransLink app, visit [translink.com.au](http://translink.com.au), or call 13 12 30.**