



Bundaberg Christian College  
Education with Wisdom

## International Student Tuition and Non-Tuition Fees 2019

Fees are subject to yearly increase

### Bundaberg Christian College Ltd trading as Bundaberg Christian College CRICOS – 03242B

The College is registered to take Overseas Students from Preparatory to 12.

An Application Fee of AU\$250 per student applies for all College applications.

#### Tuition Fees

All fees quoted are **per year**

(Fees are payable one **semester**<sup>1</sup> in advance)

Years P – 6 Course Code: 082640m	Years 7 – 10 Course Code: 082641k	Years 11 – 12 Course Code: 072631f
<b>Au\$17 248 (\$8 624)</b>	<b>Au\$18 430 (\$9 215)</b>	<b>Au\$19 738 (\$9 869)</b>

Tuition Fees Cover: Tuition, Subject Levies and School Camps.

10 weeks written notice is required for early departure or a 10 week's Fees Paid in Lieu

Each placement is subject to interview and acceptance of our Conditions of Enrolment

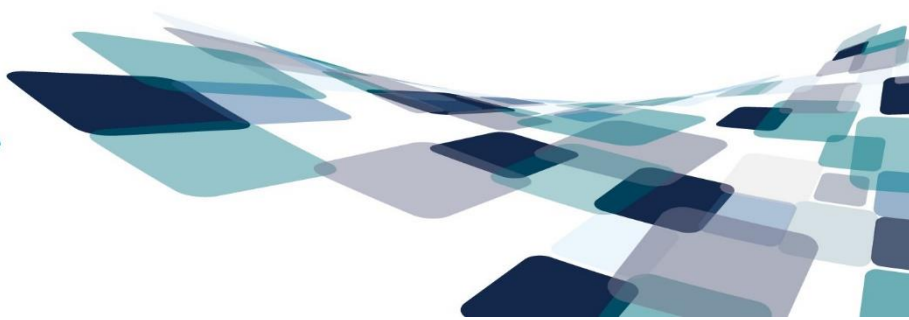
If a student changes visa status (eg becomes a temporary or permanent resident) he/she will continue to pay full overseas student's fees for the duration of that year.

#### Non-Tuition Fees

- Digital Device – Refer to BYOD requirements in Student Handbook (Yr 7 – Yr 12 students only) AU\$500 - AU\$1500 (approx)<sup>2</sup>
- Stationery Requirements AU\$200 (approx) per year
- Uniforms (approximately) AU\$250 Prep<sup>3</sup>  
AU\$300 Year 1 – 6<sup>3</sup>  
AU\$450 Year 7 – 10<sup>3</sup>  
AU\$600 Year 11- 12<sup>3</sup>
- Overseas Student Health Cover - **OSHC** AU\$550 per year (approx)<sup>4</sup>

Parents must apply for OSHC for the student. For Information on Australian health insurance companies refer to [www.oshcaustralia.com.au](http://www.oshcaustralia.com.au)

- Homestay AU\$250 - AU\$400 per week



- Bus Travel student AU\$800 - \$2000 p/year p/
- Private Tutoring (outside school hours) Negotiate with Tutor
- ESL AU\$3000 per year
- Instrumental Music AU\$1000 per year
- Voluntary Building Fund Donations are encouraged

**NOTE:** Not all items listed under Non-Tuition Fees (example: Homestay, Bus Fee, ESL) are compulsory for the student. The respective fees are applicable only if the services are required.

---

<sup>1</sup> *one Study period. (Note: 2 semesters/2 study periods per year.*

<sup>2</sup> *may need replacing after 2 – 3 years*

<sup>3</sup> *may need new set each 2 – 3 years*

<sup>4</sup> *Subject to change depending on OSHC cost for a particular year*