



Bundaberg Christian College
Education with Wisdom

BCC

International Student

English Proficiency Assessment

“EDUCATION WITH WISDOM”

“Wisdom is supreme; therefore get wisdom. Though it cost all you have, get understanding.”
(Proverbs 4:7)

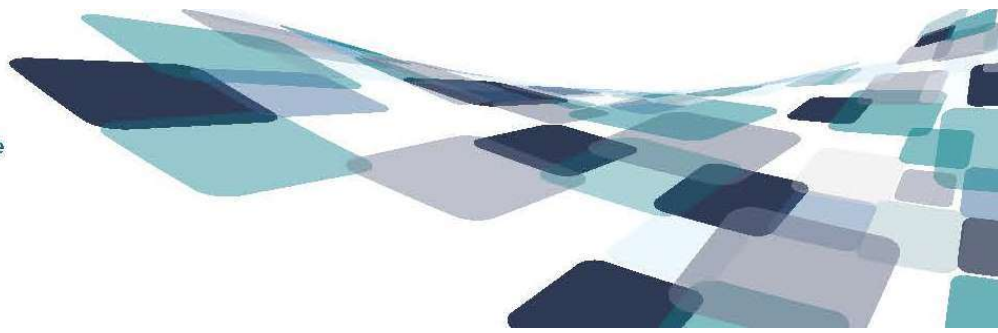
Updated: April 2018
Review: Annually

Respect | Integrity | Servanthood | Excellence

P: (07) 4152 5800 F: (07) 4159 5618 E: info@bcc.net.au

234 Ashfield Road Bundaberg QLD 4670

CRICOS: 05242B ABN: 56 066 982 974



English Proficiency Assessment

Testing and Placement Policy and Procedure

Off-Shore Test

Students living overseas who wish to enrol at Bundaberg Christian College are required to do an off-shore English Proficiency test.

- The test is done through an Australian Education Assessment Services centre in their country of residence.
- Results are given for English, Maths and Language Communication.
- Test results, copies of school reports and recommendations are forwarded to the College.
- The International Student Teacher converts the results to the NLLIA Bandscales.
- The Principal, Head of Middle and Senior School, and the Head of Learning Enrichment interview the student and discuss placement and support.

Off- Site Test

Students who are living in Australia and wish to enrol at the College may do the same test at one of the Australian Education Assessment Services centres in Brisbane or their nearest city. The same procedure for the off-shore test is followed.

On – Site Test

Students who are living in Australia may do the PROBE literacy test with the International Student Teacher as part of the pre-enrolment procedure.

The PROBE is used with *all* newly enrolled students to provide supplementary observation and assessment.

Junior School (Primary Students): Prep to Year 6

Primary students enter the mainstream classroom and are withdrawn for International Student Program support.

Middle and Senior School

The aim of the International Student Program is to enable students to perform independently at NLLIA Band- scale Level 6.

Middle School: Years 7, 8, 9

Year 7, 8 and 9 students who meet the NLLIA Bandscales Level 5.5 enter the mainstream English classroom but are withdrawn for International Student Program support. In-class support can be given if preferred.

Students who have a suitable recommendation take the International Student Program as their English subject until Level 5.5 is achieved.

Senior School: Years 10 - 12

Year 10, 11 and 12 students who meet the NLLIA Bandscales Level 6.0 enter the mainstream English classroom. At this level, International Student Program consultations only are usually needed.

The Bandscales are the criteria set by the National Language and Literacy Institute of Australia to track International Student progress and achievement in the four macro-skills of Reading, Writing, Listening and Speaking.

A Bandscale key is on the back of all International Student reports and student Bandscale levels are shown on each end-of-semester report.