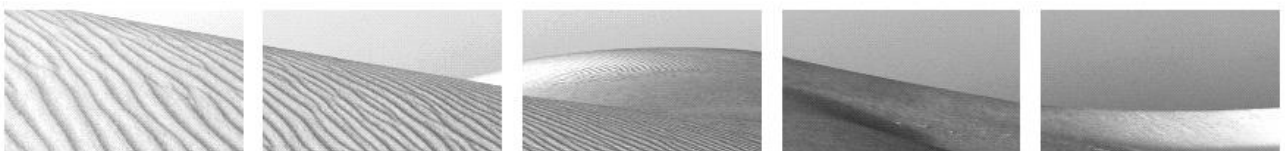


# CRONULLA HIGH SCHOOL

**YEAR 8**

**2018**

**ASSESSMENT BOOKLET**



Raising expectations ■ Communicating with parents ■ Recognising achievement

## TABLE OF CONTENTS

---

<b>ASSESSMENT PROCEDURES IN YEAR 8 .....</b>	<b>2</b>
<b>ILLNESS OR MISADVENTURE CLAIM PROCEDURES .....</b>	<b>7</b>
<b>BIBLIOGRAPHY CHECKLIST .....</b>	<b>9</b>
<b>YEAR 8 ENGLISH 2018 .....</b>	<b>10</b>
<b>YEAR 8 ENGLISH EXTENSION 2018.....</b>	<b>11</b>
<b>YEAR 8 MATHEMATICS 2018 .....</b>	<b>12</b>
<b>YEAR 8 MATHEMATICS EXTENSION 2018.....</b>	<b>13</b>
<b>YEAR 8 SCIENCE 2018.....</b>	<b>14</b>
<b>YEAR 8 SCIENCE EXTENSION 2018 .....</b>	<b>15</b>
<b>YEAR 8 GEOGRAPHY 2018 .....</b>	<b>16</b>
<b>YEAR 8 GEOGRAPHY EXTENSION 2018 .....</b>	<b>17</b>
<b>YEAR 8 HISTORY 2018 .....</b>	<b>18</b>
<b>YEAR 8 HISTORY EXTENSION 2018.....</b>	<b>19</b>
<b>YEAR 8 PERSONAL DEVELOPMENT, HEALTH AND PHYSICAL EDUCATION .....</b>	<b>20</b>
<b>YEAR 8 COMPUTING STUDIES 2018.....</b>	<b>21</b>
<b>YEAR 8 JAPANESE 2018 .....</b>	<b>22</b>
<b>YEAR 8 MUSIC 2018 .....</b>	<b>23</b>
<b>YEAR 8 TECHNOLOGY(MANDATORY) INDUSTRIAL ARTS 2018 .....</b>	<b>24</b>
<b>YEAR 8 TECHNOLOGY(MANDATORY) – HOME ECONOMICS 2018.....</b>	<b>25</b>
<b>YEAR 8 VISUAL ARTS 2018.....</b>	<b>26</b>

## ASSESSMENT PROCEDURES IN YEAR 8

---

### WHAT IS ASSESSMENT?

Assessment is the process of identifying, gathering and interpreting information about students learning. The central purpose of assessment is to provide information on student achievement as well as to set the direction for ongoing learning programs. Formal assessment tasks are used across all subjects so as to provide a basis for comparing evidence of a student's achievements both against other students and predetermined levels of achievement.

### WHEN WILL I BE ASSESSED?

- Assessment can commence from the beginning of the school year.
- You will be given a program of dates to be followed, which will outline the **approximate dates** when assessment tasks are due.
- At least 10 days' notice will be given of the **specific date** that an assessable task is to be either submitted for marking or will take place. Circumstances may arise that will lead to a change in the due date for an assessment task. In this case, teachers would give students appropriate notice of any change in date.
- **Assessment Week** – During predetermined Assessment Weeks for each year, you will sit a number of exams or assessment tasks. Assessment Week dates are published in the school e-diary and school calendar every year.

### TO WHOM AND WHEN DO I SUBMIT MY ASSESSMENT TASK?

Your class teacher, at a time designated by the class teacher on or before the **day the task is due**. If your teacher is away that day, you must submit it to the Head Teacher of that subject. You must **only** hand in the tasks/assignments to your **Class teacher or Head Teacher** of the relevant faculty. If for any reason both are absent on the day then the task is to be submitted to a Deputy Principal.

### WHAT HAPPENS IF I AM ABSENT WHEN THE ASSESSMENT TASK IS SET?

It is **your responsibility** to find out if a task has been set during your absence. **No variation to the due date will apply** to students who were away on the date the assignment was set. Students are urged to check e-diary daily, see their teachers immediately upon their return to be advised of missed work and to implement a buddy system so as to be informed of tasks issued in absentia.

## WHAT IF I DO NOT COMPLETE ASSESSMENT TASKS?

The school expects that all students will **complete all assessment tasks** and that they will **complete them on time**. Where this does not happen the student should advise the subject teacher and Head Teacher as a matter of urgency.

In Year 8, if an assessment task is not submitted for marking by the due date and stated time, a **sliding penalty scale** will be applied to the assessment mark awarded.

A penalty of 20% of the maximum marks available for that task will be applied for each school day, after the due date, that the assessment task is submitted for marking. For example, if an assessment task is submitted one school day late, a penalty of 20% will be applied. If the task is submitted three school days late, a penalty of 60% will be applied. If a task is submitted five or more school days late, no credit for that task will be given towards a student's overall assessment.

**Where a student is absent for an in class assessment task, they will receive zero for the task until they have completed satisfactorily the necessary illness and misadventure claim procedures. Please note it is not automatic that the student will receive any concession for their absence.**

## WHAT HAPPENS IF I AM ABSENT WHEN AN ASSESSMENT TASK IS ON OR DUE?

The school must be contacted on the day of the task (Ph: 9523 4017) to inform the subject teacher of the student's absence. Any student who is absent without an acceptable reason **will be** given zero for that task. If the absence was unavoidable and the student believes that they should still receive credit for the assessment task then they should submit an **Illness or Misadventure Claim form, with supporting evidence that makes clear the illness or the misadventure that prevented the student attending**. A general note from home is unlikely to be considered sufficient. For an illness a medical certificate is required. For misadventure, evidence of the misadventure that prevented attendance is required.

The Illness or Misadventure claim form must be submitted to the Head Teacher within 3 school days of the date the task falls due or within 3 school days from when the student first returns to school. In the event the Head Teacher is absent, the form must be submitted to the front office for placement in the Head Teacher's pigeon hole.

In the case of a prolonged unavoidable absence, where an illness or misadventure claim is upheld, a substitute task may need to be set to ensure fairness to all concerned.

### **Other circumstances that need to be noted include:**

- Where a student has **prior knowledge of an absence** (e.g. due to a family holiday, scheduled medical reasons) **the student must submit a written application (Illness or Misadventure Claim form) before the absence**, to the Head Teacher of the relevant subject. It is not automatic that any concession will be given. Each application will be judged entirely on its own merit. A substitute assessment task may be arranged.
- It is expected that students will attend all timetabled lessons, including study periods, on the day of an assessment task whether it be an in class task or a hand in task. Where a student is absent **during periods prior to the task** and on the same day as the task, a 20% penalty of the maximum task marks available will be applied to marks received.

- Any student arriving to school late on the day of the task will be considered to be seeking to gain an unfair advantage and in the absence of substantiated and justified reasons, a 20% penalty of the maximum task marks available will be imposed.
- A student who truants from a class while at school on the day an assessment task is being undertaken or submitted will be considered in the same manner and a 20% penalty of the maximum task marks available will be imposed.
- Any student found to be preparing for an assessment task in another class while at school on the day an assessment task is being undertaken or submitted will be considered to be seeking an unfair advantage and a 20% penalty of the maximum task marks available will be imposed.
- If a student is absent from school on the due date of an assessment task because of a legitimate school activity (eg a sporting carnival, an excursion) the student must first notify the relevant Head Teacher and in the case of a hand in task negotiate an appropriate time for submission of the task **before the student attends the event**. In the case of an **in class task**, arrangements for the completion of the task must be made with the relevant Head Teacher **before** attending the event.

If circumstances exist where the student feels they have been unfairly disadvantaged in some way by this rule they may appeal to the Principal in writing.

Students can expect to sit for any missed 'in class' assessment task on their first timetabled lesson back, or at a time negotiated between the class teacher and the student.

Where a student **has failed to complete a formal assessment task, made a non-serious attempt at an assessment task and/or incurred any loss of marks due to late submitting of the task**, a Parent Advice letter will be sent home by the class teacher.

## GRADES FOR SCHOOL REPORTS

The table below indicates the final assessment mark required for the allocation of grades for the school reports.

Final Grade
A – 100 to 85
B – 84 to 70
C – 69 to 50
D – 49 to 30
E - 29 to 0

## WHAT IS PLAGIARISM?

**Plagiarism is a form of theft.** Plagiarism is the taking or imitation of another person's ideas and manner of expressing them and presenting them as one's own. That is, plagiarism is copying other people's work or taking another's ideas and using them without appropriate acknowledgement.

### What is NOT acceptable

- Copying parts (phrases, sentences, paragraphs etc) out of books, short stories, newspapers, encyclopedias, internet sites, and other students' work.
- Using other people's ideas without correct acknowledgement (see below).
- Quoting without providing acknowledgement (see below).
- Submitting work that has been written by someone else, such as a tutor, parent or friend, or which has had more than reasonable input from someone else.

### What IS acceptable

- Using published texts – short stories, essays, poems, and media items etc – as MODELS for your own writing. A model shows you the structure and type of language that is appropriate for a particular form of writing. You make use of the model to show you HOW something is done; the content and expression must be your own.
- Borrowing ideas for creative writing – you must acknowledge your source which has inspired you. This is often what writers do at the beginning of novels to show where their inspiration came from.
- Editing assistance – all good writers have good editors who suggest ways of making their writing better. This advice can be about ideas, expression, structure etc. However, an editor does NOT make these changes – the writer does if he or she agrees with them. You are welcome to use parents, friends, teachers as editors to ADVISE you but they must NOT do the work for you.

### How do I avoid it?

Always cite the following; Internet and CD ROMs, Magazines and Newspapers, Books, Music, TV programs and films, Interviews, Maps, Summaries, other student's work, other people's ideas.

You must include a list of resources used in research assignments, essays etc. The bibliography appears at the end of the essay or assignment. List sources in alphabetical order according to the author's last name. Use a bibliography sheet to write down all sources as you research. An example of the sheet is on page 12 of this booklet and is also available on the Cronulla High School Intranet site.

### **Example of a Bibliography entry:**

Marsden, John. Tomorrow When the War Began, Melbourne: Penguin, 1995.

Book titles can be underlined or italicized. For the purposes of a hand-written exam response, it is important to underline a book title. Titles of poems, media items, short stories, journal articles, and other shorter texts, are usually italicized or placed in inverted commas.

### How do I prevent it? – Use a Bibliography

## **How do I acknowledge quotations and ideas in my work?**

Quotations must have “quotation marks” [1] around them and a footnote (a number should appear straight after the quotation) which states where the quotation came from.

At times it is necessary to acknowledge an author’s quote in your own essay without a footnote. This situation would occur during exam essays. In this situation you must use quotation marks around the quote or idea and immediately follow with the surname and year of the source and if possible, a page number. eg. ....a “positive school environment” (Jarvis 2004, p1)

When you use someone else’s idea or borrow a form of expression, insert a footnote in the same way as for a quotation. You must acknowledge ideas even if you do not copy the idea word for word.

If you relied heavily on a particular critic for your interpretation of a text you must say so in a footnote, for example [2] (see below).

**Examples of footnoting:** [1] John Marsden, Tomorrow When the War Began, Melbourne: Penguin, 1995, p’5 [2] I am indebted to Fred Nerks for my understanding of this poem. See Nerks, Fred, Poetry for Humans, Sydney: Longmans, 1999.

## **What happens if I Plagiarise in an Assessment Task?**

Penalties for plagiarism will depend on the amount of plagiarised material contained within the task. For example, if an entire essay has been plagiarised then zero will be awarded for that task. However, if only a certain section of the task has been plagiarised then only that part of the task will get zero. You will be only marked on the work that is your own and not taken from someone else. For example, if it is proven that you have plagiarised 50% of a task then you will only be marked on the 50% that you did yourself.

## **WHAT IS MALPRACTICE?**

Any failure to comply with the rules as set out in this policy will be judged to be malpractice.

**If you are found to have engaged in malpractice you will be awarded a zero.**

### **Examples of malpractice include:**

- Copying someone else’s work in part or in whole, and presenting it as your own
- Using material directly from books, journals, CDs or the internet without reference to the source. Refer to the appendix for more information.
- Building on the ideas of another person without reference to the source
- Buying, stealing or borrowing another person’s work and presenting it as your own
- Submitting work to which another person such as a parent, coach or subject expert has contributed substantially
- Using words, ideas, designs or the workmanship of others in practical and performance tasks without appropriate acknowledgement
- Paying someone to write or prepare material
- Breaching school examination rules
- Using non-approved aides during an assessment task
- Contriving false explanations to explain work not handed in by the due date
- Assisting another student to engage in malpractice

## ILLNESS OR MISADVENTURE CLAIM PROCEDURES

Collect and complete an “**Illness or Misadventure Claim**” form from the front office and submit it to the **Head Teacher** of the subject concerned.

Forms are also available online on the school’s website. **For an in class task students may be required to sit for the task on their first day back at school, or at a time that has been previously arranged with the class teacher.**

Any claim due to:

1. **Illness should be supported by a medical certificate (failure to provide a doctor’s certificate may result in rejection of the claim) and submitted within 3 school days of when the student first returns to school.** The school should be contacted on or prior to the date of the task so the relevant Head Teacher can be informed. The medical certificate should specifically relate to the task and how the students’ performance has or will be affected.
2. **Misadventure must be supported by appropriate and detailed documentation in support of the claim.**
  - Any claim against a zero mark or procedural arrangements associated with an assessment task must be completed within **three school days** of the return of the task.
  - Appeals must be submitted to the Head Teacher of the KLA concerned. The Principal, or nominee, will co-ordinate a committee to consider all aspects of the appeal.
  - If an appeal is upheld, the committee may determine that an alternate task be sat or may authorise the use of an estimate based on other appropriate evidence.

Any dissatisfaction with the process should be referred to the Principal.

In **exceptional circumstances** where the completion of a substitute task is not reasonably possible, the Principal in consultation with the teacher and relevant Head Teacher may authorise the use of an estimate mark. The estimate mark will be **based on other appropriate evidence**.

**The Head Teacher must notify the student and class teacher of the outcome when an illness and misadventure form is presented for due consideration.**

**PLEASE NOTE: All work set in a subject is part of the NSW Education Standards Authority curriculum regardless of whether it is assessable or not.**

### Technological Failure

Computer/printer/storage device failure is not an excuse for inability to complete tasks by the due date. It is the student’s responsibility to back-up and keep a hard copy of any work in progress. This can be called upon for marking.

#### **Good Advice to all students – implement a buddy system**

It is important that you “buddy-up” with one or more students so that any time you are absent from school, your “Buddy” collects any handouts or assignments for you. Whilst many teachers will do so out of good will, it is not the teacher’s responsibility to contact you after your absence. It is your responsibility to pursue any missed work, handouts or assignments



**CRONULLA HIGH SCHOOL  
ILLNESS OR MISADVENTURE CLAIM FORM**

Student's Name:..... Year: ..... Roll Class: .....

Parent's name:..... Daytime parent contact number: .....

Exam or Assessment task affected:.....

..... Due date of task: ..... / ..... / .....

Subject:..... Class Teacher's name:.....

Type of claim                       Illness                       Misadventure

Describe your reasons for submitting this claim:  
(Any supporting evidence, such as a doctor's certificate or a letter from a parent, should be attached.  
This substantiates that you were prevented from satisfying assessment requirements due to an illness  
or unforeseeable misadventure)

.....  
.....  
.....  
.....  
.....  
.....  
.....

State what outcome you hope to achieve by submitting this claim:

.....  
.....  
.....

Parent or Guardian's Signature:..... Date: ..... / ..... / .....

**INSTRUCTIONS:**

- This claim form, along with any supporting evidence, such as a doctor's certificate, should be submitted to the Head Teacher of the subject area concerned.
- This claim form should be submitted **within three school days** after the examination or assessment task in question has occurred. (It is to be submitted before the task is due in the case of a known absence)
- Failure to comply with these instructions may result in a zero assessment being recorded.

**Office use only**

Day & Date claim received by Head Teacher:            Mo    Tu    We    Th    Fr    ..... / ..... / .....

Head Teacher's name: ..... Signature:.....

**Forms are available from school reception or school website.**

## BIBLIOGRAPHY CHECKLIST

---

### Books and references used

<b>Author's Name (surname, initial)</b>	<b>Year of publication</b>	<b>Title of Book</b>	<b>Place published</b>	<b>Publisher</b>

### Internet Resources

*(note: search engines such as Yahoo! And Google are NOT websites)*

<b>Author</b>	<b>Year published</b>	<b>Name of site</b>	<b>Web Address</b>	<b>Creator of site</b>	<b>Date accessed by you</b>

## YEAR 8 ENGLISH 2018

Outcomes	Task	Due	Description	Weight%
4.1A, 4.4B 4.5C	Writing	Term 1 Week 6	A Hero's Journey: Writing a short story	15
4.1A, 4.6C 4.7D	Multimodal	Assessment Week Term 2 Week 6	Shakespeare Analysis Speech And Visual Representation	25
4.1A to 4.9E	Class based assessment	Ongoing Term 1 & 2	Literacy and Class assessment	10
<b>Half Yearly Assessment Sub-Total</b>				<b>50</b>
<b>(Half Yearly Assessment/ expressed as percentage for reporting purposes)</b>				
4.1A, 4.3B 4.7D	Viewing/Listening and writing	Term 3 Week 9	Through My Window Film Analysis Essay	20
4.1A, 4.2A, 4.4B, 4.5C, 4.7D	Reading	Assessment Week Term 4 Week 4	History in Texts Comprehension Task	20
4.1A to 4.9E	Class based assessment	Ongoing Term 3 & 4	Literacy and class assessment	10
<b>Yearly Assessment Totals</b>				<b>100</b>

Assessment Tasks may vary depending on student/class ability.

During the English program, students may view DVD and video texts.

These will have an age-appropriate rating.

## YEAR 8 ENGLISH EXTENSION 2018

Outcomes	Task	Due	Description	Weight%
4.1A, 4.4B 4.5C	Writing	Term 1 Week 6	A Hero's Journey: Writing a Short Story	15
5.1A, 5.6C 4.7D	Multimodal	Assessment Week Term 2 Week 6	Shakespeare Analysis Speech And Visual Representation	25
4.1A to 5.9E	Class work assessment	Ongoing Term 1 & 2	Literacy and Class assessment	10
<b>Half Yearly Assessment Sub-Total</b>				<b>50</b>
<b>(Half Yearly Assessment/ expressed as percentage for reporting purposes)</b>				
5.1A, 5.3B 5.7D	Viewing/ Listening and Writing	Term 3 Week 9	Through My Window Film Analysis Essay	20
4.1A, 4.2A, 4.4B, 4.5C, 4.7D	Reading	Assessment Week Term 4 Week 4	History in Texts Comprehension Task	20
	Class based assessment	Ongoing Term 3 & 4	Literacy and class assessment	10
<b>Yearly Assessment Totals</b>				<b>100</b>

During the English program, students may view DVD and video texts. These will have an age-appropriate rating.

## YEAR 8 MATHEMATICS 2018

Outcomes	Task	Due	Description	Weight%
MS4.1, NS4.3, NS5.1.1, PAS4.5, PAS5.1.1, PAS5.2.1	1	Term 1 Week 7	Class Exam	15
PAS4.4, PAS5.2.2, PAS4.5, SGS4.3(last 2 pts), MS4.1(last 4 pts)	2	Term 2 Assessment Week	Half Yearly Exam	25
<b>Half Yearly Assessment out of 40 will be converted to a percentage out of 100 for reporting purposes</b>				
<b>Carried Forward Half Yearly Assessment</b>				<b>40</b>
NS4.3(last 8 pts), SGS4.3, SGS5.2.1, DS4.1, DS5.1.1	3	Term 3 Week 7	Class Exam	25
DS4.2, MS4.2, MS5.2.2, SGS4.4, SGS5.2.2	4	Term 4 Assessment Week	Yearly Exam	35
<b>Yearly Assessment</b>				<b>100</b>

The Yearly Exam will consist mainly of work covered in the second semester.

The total for both half yearly and yearly will be used to determine overall achievement in Year 8.

This mark along with teacher recommendations will determine class placements for Year 9.

## YEAR 8 MATHEMATICS EXTENSION 2018

Outcomes	Task	Due	Description	Weight%
MS4.1, NS4.3, NS5.1.1, PAS4.5, PAS5.1.1, PAS5.2.1	1	Term 1 Week 7	Class Exam	15
PAS4.4, PAS5.2.2, PAS4.5, SGS4.3(last 2 pts), MS4.1(last 4 pts)	2	Term 2 Assessment Week	Half Yearly Exam	25
	E1	Extension Challenge		Grade A-E
<b>Half Yearly Assessment out of 40 will be converted to a percentage out of 100 for reporting purposes</b>				
<b>Carried Forward Half Yearly Assessment</b>				<b>40</b>
NS4.3(last 8 pts), SGS4.3, SGS5.2.1, DS4.1, DS5.1.1	3	Term 3 Week 7	Class Exam	25
DS4.2, MS4.2, MS5.2.2, SGS4.4, SGS5.2.2	4	Term 4 Assessment Week	Yearly Exam	35
	E2	Extension Challenge		Grade A-E
<b>Yearly Assessment</b>				<b>100</b>

The Yearly Exam will consist mainly of work covered in the second semester.

The total for both half yearly and yearly will be used to determine overall achievement in Year 8.

This mark along with teacher recommendations will determine class placements for Year 9.

## YEAR 8 SCIENCE 2018

Assessment in Science covers a range of tasks designed to determine student achievement in outcomes based on knowledge and understanding, problem solving and critical thinking as well as scientific skills and communication.

Outcomes	Task	Due	Description	Weight %
WS7.1, 7.2 LW5	1	Term 1 Week 5	Ecology Study	20
WS4, WS8, ES4 CW1, CW2, CW4	2	Term 2 Week 3-4	Practical Test	20
<b>Half Yearly Assessment</b>				<b>40</b>
<b>( Half Yearly expressed as a percentage for reporting purposes)</b>				
WS4, 5, 6, WS7, 8, 9	3	Term 3 Week 1	Student Research Project	25
WS7.1, 7.2, WS9 PW4	4	Term 3 Week 9-10	Extended Response-Literacy Task	15
WS7.1, 7.2 WS8, 9 PW3, PW4 ES1, ES3 CW1, CW2, CW4	5	Term 4 Week 3-4	Yearly Exam	20
<b>Yearly Assessment Totals</b>				<b>100</b>

## YEAR 8 SCIENCE EXTENSION 2018

Assessment in Science covers a range of tasks designed to determine student achievement in outcomes based on knowledge and understanding, problem solving and critical thinking as well as scientific skills and communication.

Outcomes	Task	Due	Description	Weight %
WS7.1, 7.2 LW5	1	Term 1 Week 5	Ecology Study	20
WS4, 8 ES4 CW1, CW2, CW4	2	Term 2 Weeks 3-4	Practical Test	20
Extension Activities				Grade A - E
<b>Half Yearly Assessment</b>				<b>40</b>
<b>( Half Yearly expressed as a percentage for reporting purposes)</b>				
WS4,5,6, WS7,8,9	3	Term 3 Week 1	Student Research Project	25
WS7.1, 7.2 WS 9 PW 4	4	Term 3 Week 9-10	Extended Response-Literacy Task	15
WS7.1, 7.2 WS8, 9 PW3, PW4 ES1, ES3 CW1, CW2, CW4	5	Term 4 Weeks 3-4	Yearly Exam	20
Extension Activities				Grade A - E
<b>Yearly Assessment Totals</b>				<b>100</b>



## YEAR 8 GEOGRAPHY 2018

---

Outcomes	Task	Due	Description	Weight%
GE4.1, 4.2, 4.3, 4.4, 4.5, 4.7, 4.8,	1	Week 8	Task 1 Class Based Assessment	35
GE4.1, 4.3, 4.4, 4.6, 4.7, 4.8	2	Exam Period	Task 2 Exam	35
<b>Semester Assessment Sub-Total</b>				<b>70</b>
	3	Ongoing	Bookwork	10
	4	Ongoing	Numeracy Task 1	10
	5	Ongoing	Literacy Task 2	10
<b>Semester Class Assessment Totals</b>				<b>30</b>
				<b>100</b>

## YEAR 8 GEOGRAPHY EXTENSION 2018

---

Outcomes	Task	Due	Description	Weight%
GE4.1, 4.2, 4.3, 4.4, 4.7, 4.8, 4.9	1	Week 8	Task 1 Class Based Assessment	35
GE4.1, 4.3, 4.4, 4.7, 4.8	2	Exam Period	Task 2 Exam	35
<b>Extension Assessment</b>			<b>Sub-Total</b>	<b>70</b>
4.5, 4.7, 4.8, 4.9, 4.10	3	Term 1	Extension Project Challenge	Grade A-E
	4	Ongoing	Literacy Task 1	10
	5	Ongoing	Numeracy Task 2	10
	6	Ongoing	Bookwork	10
<b>Semester Class Assessment</b>			<b>Totals</b>	<b>30</b> <b>100</b>

## YEAR 8 HISTORY 2018

---

Outcomes	Task	Due	Description	Weight%
4.1, 4.4, 4.5, 4.6, 4.7, 4.8, 4.9, 4.10	1	Week 6	Task 1 Class Based Assessment	35
4.1, 4.4, 4.5, 4.6, 4.7, 4.8, 4.9, 4.10	2	Exam Period	Task 2 Exam	35
<b>Semester Assessment Sub-Total</b>				<b>70</b>
	3	Ongoing	Literacy Task 1	10
	4	Ongoing	Numeracy Task 2	10
	5	Ongoing	Bookwork	10
				<b>30</b>
<b>Semester Class Assessment Totals</b>				<b>100</b>

## YEAR 8 HISTORY EXTENSION 2018

---

Outcomes	Task	Due	Description	Weight%
4.1, 4.4, 4.5, 4.6, 4.7, 4.8	1	Week 6	Task 1 Class Based Assessment	35
4.1, 4.4, 4.5, 4.6, 4.7, 4.8, 4.9	2	Exam Period	Task 2 Exam	35
<b>Semester Assessment Sub-Total</b>				<b>70</b>
4.6, 4.7, 4.8, 4.9, 4.10	3	Term 3	Extension Challenge	Grade A-E
	4	Ongoing	Literacy Task 1	10
	5	Ongoing	Numeracy Task 2	10
	6	Ongoing	Bookwork	10
				<b>30</b>
<b>Semester Class Assessment Totals</b>				<b>100</b>

The extension activity set for Year 8 will run over the course of Term 3 and will allow students to demonstrate and develop their historical knowledge and skills. Students will be allocated some class time, however, students are expected to undertake the majority of the task challenge at home.

## YEAR 8 PERSONAL DEVELOPMENT, HEALTH AND PHYSICAL EDUCATION 2018

Outcomes	Task	Due	Description	Weight%
4.1, 4.6, 4.12, 4.16	Sexual Health Topic Test	Term 1 Week 7	Complete the Sexual Health Topic test	20
4.4, 4.5, 4.14	Athletics	Term 1 Set Week 10  Term 2 Due Week 5-6	Students perform a range of athletic skills	20
<b>Half Yearly Assessment Sub-Total</b>				<b>40</b>
<b>(Half Yearly Assessment/ expressed as percentage for reporting purposes)</b>				
4.6, 4.7, 4.11, 4.12,	Road Safety	Term 2 Set Week 1  Term 2 Due Week 9	Students explore strategies to minimise harm (Road Safety)	20
4.4, 4.5, 4.11, 4.13, 4.14, 4.15	Dance	Term 3 Set Week 1  Term 3 Due Week 4-6	Group task Students compose, design and perform a dance	20
4.1, 4.2, 4.3, 4.6, 4.7, 4.12, 4.16	Yearly examination	Assessment Week Term 4	The yearly examination will include the following topics: Sexual Health, Risk Matters, Road Safety and All about Drugs	20
<b>Yearly Assessment Totals</b>				<b>100</b>

## YEAR 8 COMPUTING STUDIES 2018

Outcomes	Task	Due	Description	Weight %
4.2.1	1	Term 1 Week 7	Database Software Skills	20
4.2.1	2	Term 2 Week 6	Commercial Graphics Task	20
<b>Half Yearly Assessment</b>			<b>Sub-Total</b>	<b>40</b>
<b>(Half Yearly Assessment/ expressed as percentage for reporting purposes)</b>				
4.1.2	3	Term 3 Week 5	3D Design Project	20
4.1.2	4	Term 4 Week 3	Digital Media Task - Audio	20
4.2.2	5	Term 4 Week 5	Keyboarding Skills	20
<b>Yearly Assessment</b>			<b>Totals</b>	<b>100</b>

## YEAR 8 JAPANESE 2018

---

Outcomes	Task	Due	Description	Weight%
4.UL.1	1	Ongoing	Class Based Assessment	15
4.UL.1, 2, 3, 4, 4.MBC 1 & 2	2	Term 2 Week 1	Cultural Investigation	10
4.UL.1, 2, 3 & 4, 4.MBC 1 & 2	3	Assessment Week	Half Yearly Exam	25
<b>Half Yearly Assessment Sub-Total</b>				<b>50</b>
<b>(Half Yearly Assessment/ 50 expressed as percentage for reporting purposes)</b>				
4.UL.1 4MBC	4	Ongoing	Class Based Assessment	15
4.UL.1, 2, 3 & 4, 4.MLC 1 & 2	5	Term 3 Week 5	Food Menu Assignment	10
4.MBC 1 & 2	6	Assessment Week	Yearly Exam	25
<b>Yearly Assessment Totals</b>				<b>100</b>

## YEAR 8 MUSIC 2018

COMPONENT/DOMAIN		Weight %
C1	Performance	25
C2	Composition	25
C3	Aural	25
C4	Musicology	25
<b>Total</b>		<b>100</b>

Outcomes	Task	Due	Description	C1	C2	C3	C4	Weight %
4.4, 4.5, 4.6, 4.9	1	Term 1 Week 9	Composition Assessment representing Topic 1		20			20
4.7, 4.8	2	Term 2 Week 5	Aural Assessment			25		25
4.12	Ongoing		Class Tasks	5				5
<b>Half Yearly Assessment</b>							<b>Sub-Total</b>	<b>50</b>
<b>(Half Yearly Assessment /50 expressed as percentage for reporting purposes)</b>								
4.7, 4.10, 4.11	3	Term 3 Week 7	Musicology Assessment - Individual ICT Research task representing Topic 3				25	25
4.1, 4.2, 4.3	4	Term 4 Week 5	Performance Assessment representing Topics 3 and 4	20				20
4.12	Ongoing		Class Tasks		5			5
<b>Yearly Assessment Totals</b>				<b>25</b>	<b>25</b>	<b>25</b>	<b>25</b>	<b>100</b>



## YEAR 8 TECHNOLOGY(MANDATORY) INDUSTRIAL ARTS 2018

Two areas of study are to be addressed each year, however the actual project may be changed to allow for rooming and materials availability.

One project will be completed each semester.

Each project has equal weighting.

First semester assessment is based on the first completed design project.

Second semester assessment is based on both semesters projects.

Timing	Area of Study	Project Name	Weight
Semester 1	Products/Built Environments	Metal or Timber Technologies	50
Semester 2	Products	Electronics or Metal Technologies	50
<b>Total</b>			<b>100</b>

Outcomes	Task	Due	Description	Weight
4.1.1, 4.2.1, 4.3.1, 4.3.2, 4.5.1, 4.5.2	1	Assessment week	Practical Project	30
4.1.2, 4.2.2, 4.6.1	2	Assessment week	Quiz / Journal	10
4.1.3, 4.4.1, 4.6.2	3	Term 1 Week 7	Assignment	10
<b>Half Yearly Assessment Sub-Total (Half Yearly Assessment / expressed as percentage for reporting purposes)</b>				<b>50</b>
4.1.1, 4.2.1, 4.3.1, 4.3.2, 4.5.1, 4.5.2	1	Assessment week	Practical Project	30
4.1.2, 4.2.2, 4.6.1	2	Assessment week	Quiz / Journal	10
4.1.3, 4.4.1, 4.6.2	3	Term 3 Week 6	Assignment	10
<b>Yearly Assessment Totals</b>				<b>100</b>

## YEAR 8 TECHNOLOGY(MANDATORY) – HOME ECONOMICS 2018

Timing	Area of Study	Project Name	Weight
Semester 1 or Semester 2	Product	Fashion Design	50
	Information and Communications	Video Design	50
<b>Total</b>			<b>100</b>

Technology Textiles Outcomes				
Outcomes	Task	Due	Description	Weight %
4.3.1, 4.3.2 4.4.1, 4.5.2, 4.6.1, 4.6.2,	1	Year 8 Assessment Week	Research and Design Folio (15%) and Practical Project 1 (20%)	35
4.2.1, 4.2.2, 4.4.1	2	Year 8 Assessment Week	Practical Project 2	10
4.4.1, 4.5.2, 4.6.1, 4.6.2	3	Year 8 Assessment Week	Topic Test	5
<b>Half-Yearly Sub Total (Half Yearly Assessment/ expressed as percentage for reporting purposes)</b>				<b>50</b>
Technology Food Outcomes				
Outcomes	Task	Due	Description	Weight%
4.3.1, 4.3.2, 4.4.1, 4.5.2, 4.6.1, 4.6.2,	1	Term 2 Week 5 & 6	Edited Video (25%) and Food Product (10%)	35
4.1.1, 4.2.1, 4.2.2,	2	On Going	Individual Practical Tasks	10
4.4.1, 4.5.2, 4.6.1, 4.6.2	3	Term 4 Week 4 & 5	Topic Test (Moodle Quiz)	5
<b>Yearly Total Assessment</b>				<b>100</b>

## YEAR 8 VISUAL ARTS 2018

<b>Core Units</b>	<b>Weight</b>
Art making (AM)	70
Art Criticism and Art History (AC/AH)	30
<b>Total</b>	<b>100</b>

<b>Outcomes</b>	<b>Task</b>	<b>Due</b>	<b>Description</b>	<b>Weight%</b>
4.1, 4.2, 4.3, 4.4, 4.5, 4.6	1	Term 1 Week 9	Art Criticism and History Assignment (AC/AH)	15
4.7, 4.9, 4.10	2	Term 2 Week 3	Visual Arts Process Diary (AM)	35
<b>Half Yearly Assessment Sub-Total</b>				<b>50</b>
<b>(Half Yearly Assessment/ 50 expressed as percentage for reporting purposes)</b>				
4.7, 4.8, 4.9, 4.10	1	Term 3 Week 8	Art Criticism and History Case Studies (AC/AH)	15
4.1, 4.2, 4.3, 4.4, 4.5, 4.6	2	Term 4 Week 4	Body of Work: (AM)	35
<b>Yearly Assessment</b>				<b>50</b>
<b>Totals</b>				<b>100</b>