

CATHOLIC SCHOOLS PARTNERS IN TASMANIA'S FUTURE Election Priorities 2018

School Communities Needs at a Glance

Supporting Learning and Teaching



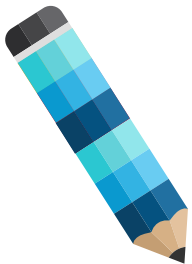
Catholic schools call on all political parties to fund the gap in the Australian Government's Schooling Resource Standard (SRS) over the next 6 years.

Supporting School building programs



Catholic Education is seeking the extension of the Capital assistance provided in the 2017-18 Budget beyond the four year forward estimates and to index this funding to reflect rising building costs.

Increased support for the Early Years



The Catholic sector is seeking funding support over four years to expand access to early learning (Birth to 4) programs.

Better access to Health checks for Catholic school children



A new partnership needs to be developed with Government to assist children in Catholic schools to have hearing and sight checks similar to that provided to state school students.

Supporting Vocational Education



Funding to ensure equity of access to TAFEVET programs for Years 10 to 12 students.

Supporting Parent Engagement



Catholic Education is seeking financial support for parent engagement activities that will deliver better learning outcomes for students.

Sustainability

Catholic education is seeking support from the next Tasmanian Government to provide incentives for solar power installations and upgrades on school sites.



Christ-Centred
Student-Focused
Learning for Life

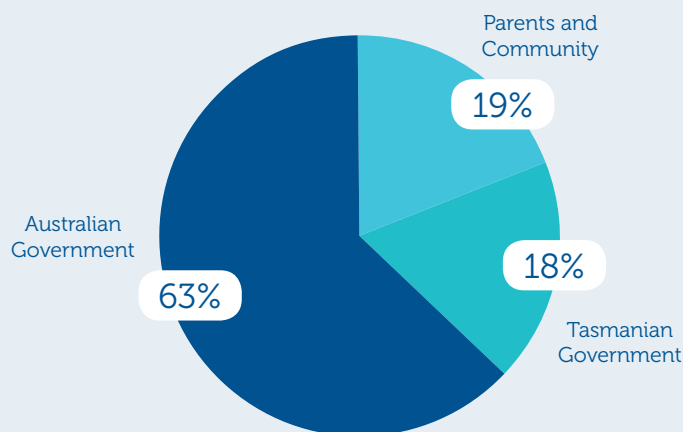
Recurrent Funding

The Catholic sector has had strong support from successive state governments and we are looking for assurances that that support will continue through a commitment from all parties to maintain recurrent and capital funding indexed from current levels following recent changes in Federal funding arrangements.

Catholic schools educate around one in five Tasmanian students. In 2017 State Government funding accounted for around 18 per cent of all recurrent funding for Tasmanian Catholic schools.

Catholic schools call on all political parties to fund the gap in the Australian Government's Schooling Resource Standard (SRS) over the next 6 years.

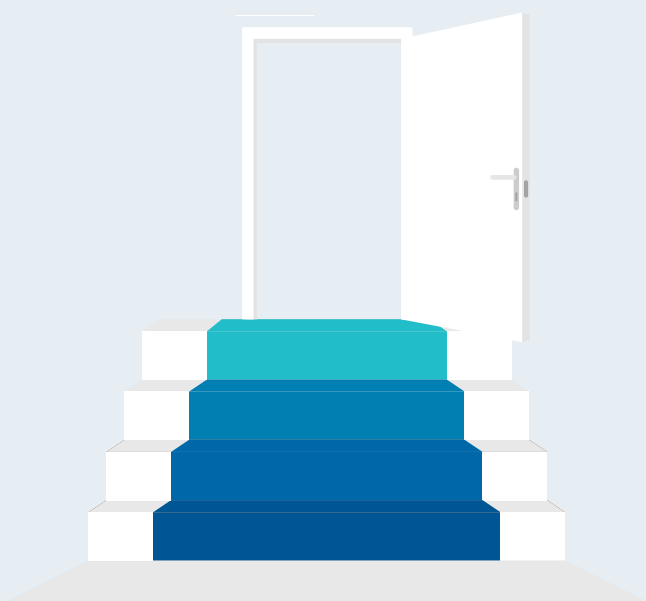
Recurrent funding sources
2017 data



Capital Funding - Schools

Parents currently cover the majority of building costs in Catholic schools. Governments must provide extra support for Catholic school facilities. In the period 2012 - 2016 Catholic education in Tasmania spent \$64.5m on improved school facilities. During that same period the State government contributed \$3.4m.

Catholic Education is seeking retention and extension of the additional Capital assistance provided in the 2017-18 Budget currently worth an additional \$950,000 annually to our sector beyond the four year forward estimates and to build in appropriate levels of indexation that reflect rising building costs.



Increased support for the Early Years

Catholic Education recognises the value of quality early childhood learning environments where all children and families are respected for their diverse history, culture, language and tradition, including religious traditions.

To expand greater access to early learning opportunities already offered to parents in government schools, Catholic education is seeking funding support over the next four years to provide Birth to 4 (B4) programs for parents choosing a Catholic education.

Better access to Health Care checks

Due to a change in Government policy Catholic schools students have limited access to health care checks for sight and hearing issues that can effect young children's start to their schooling.

A new partnership needs to be developed with Government to assist children in Catholic schools to have hearing and sight checks similar to that provided to state school students.

Supporting Vocational Education

With the change to the Education Act from 2020 students will be required to remain at school to complete Year 12. Not all students will want a university pathway.

Catholic education is calling on Government for appropriate funding to ensure equity of access to TAFE VET programs for Years 10 to 12 students.

Sustainability

In 2015 Pope Francis has highlighted the importance of Sustainability and care for the environment. Consequently, Tasmanian Catholic schools incorporate environmental design features in all new school facilities.

To broaden the availability of conversion to solar power and increase the uptake of this option, Catholic education is seeking support from the next Tasmanian Government to provide incentives for solar power installations and upgrades on school sites. Eligible schools should have access to any Government purchasing arrangements for these systems.

Support for Parent Engagement

Research shows conclusively that when families are engaged with the school and with their children's learning, students achieve more at school. The Catholic sector places high importance on developing and maintaining strong relationships between school and family to achieve the best possible outcomes for students.

Catholic Education is seeking financial support for parent engagement activities that will deliver better learning outcomes for students.



Catholic Schools in Tasmania by the Numbers

Distribution of Catholic Schools in Tasmania



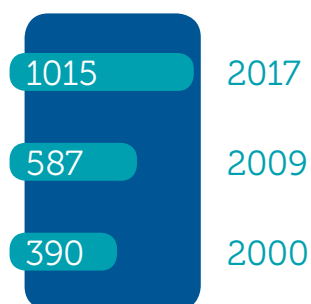
Catholic Education in Tasmania educates over 16,000 students in 38 schools and colleges across Tasmania.

Percentage of Catholic and Non-Catholic Students



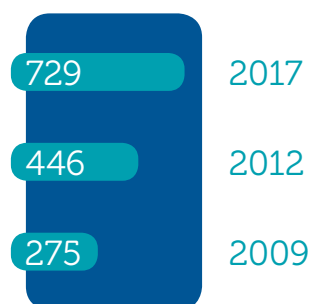
TCEO Census Data 2017

Indigenous Students in Catholic Schools in Tasmania



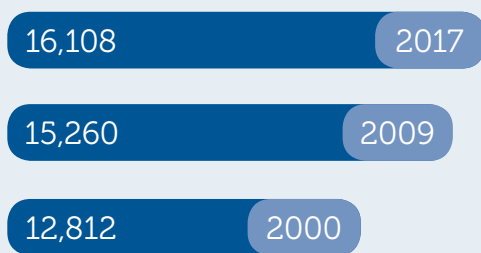
TCEO Census Data 2017

Students with Disability in Catholic Schools in Tasmania



Student Database May 2017
TCEO Annual Report 2009

Number of Students in Catholic Schools in Tasmania (K - 12)

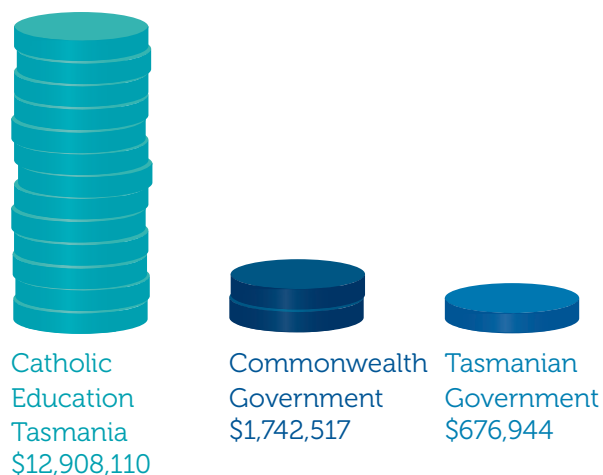


Number of Staff in Catholic Schools in Tasmania (K - 12)

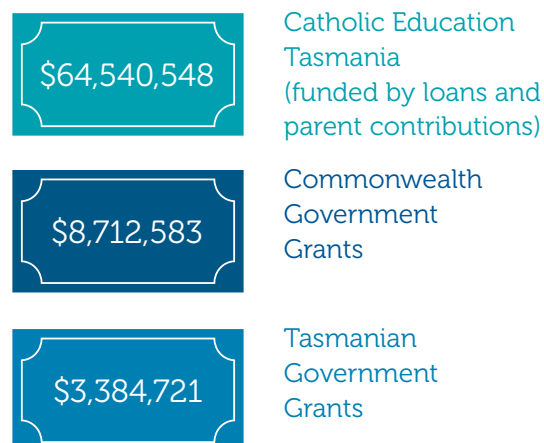


TCEO Census Data 2017

Average Annual Funding Allocations for Building Projects 2012 - 2016



Total Building Projects Allocations Over the Last Five Years (2012 - 2016)



TCEO Audited Financial Statements