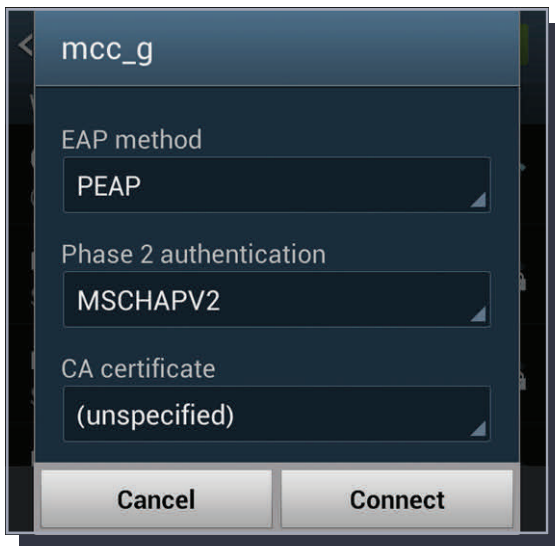


Instructions to connect to the Marist College Wi-Fi using Android devices

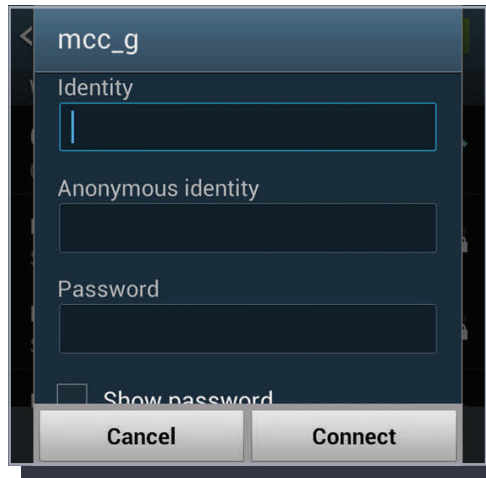
From the list of Wi-Fi networks, select **mcc_g**



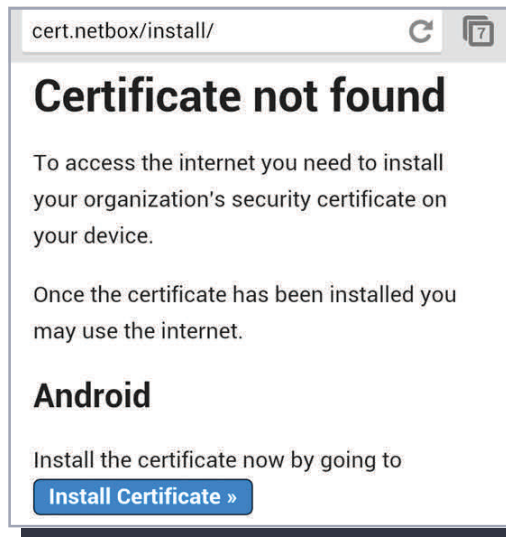
Set the EAP method to PEAP



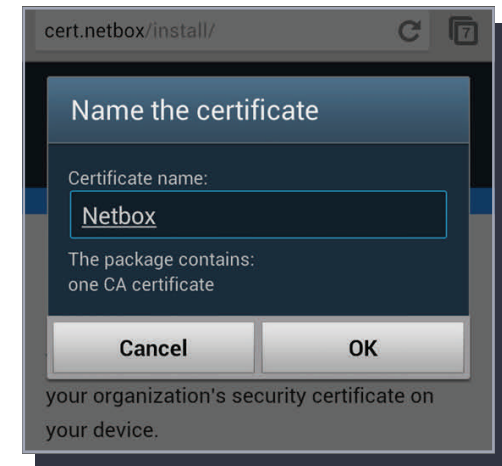
Enter your **College username** in the '**Identity**' field, and your password in the '**Password**' field



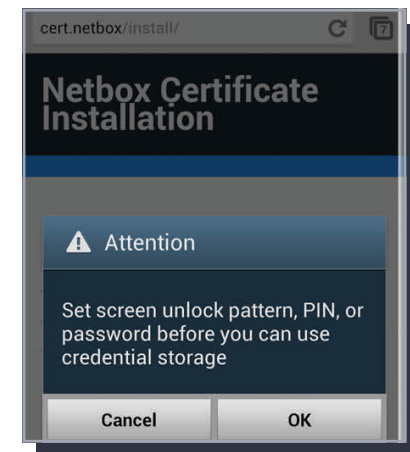
In your web browser of choice, go to the URL address <http://cert.netbox/> - it should tell you that the '**Certificate was not found**'. Press the blue '**Install Certificate**' button.



Give the certificate an appropriate name, and press OK

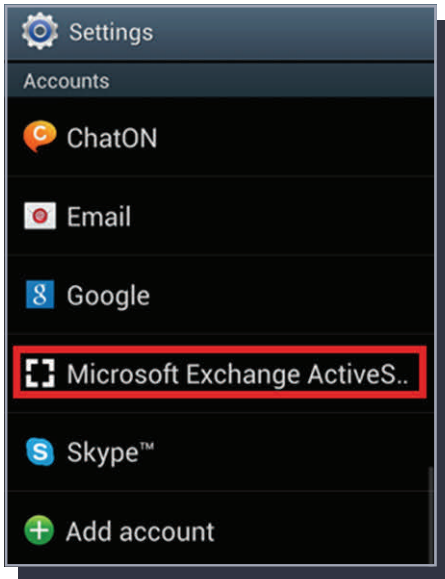


Please note, to install a user certificate on an Android device you must have a specific screen unlock pattern registered, the options are PIN or password. Also by accepting this certificate **your Internet browsing traffic will be monitored even though this is a personal device.**

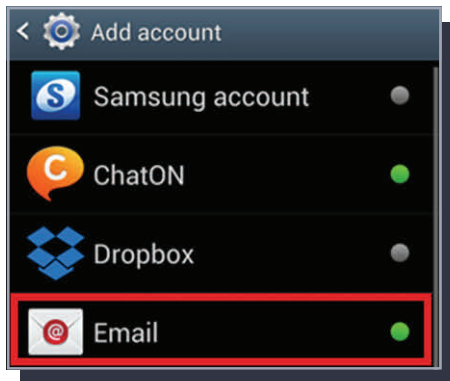


Instructions to Connect your Email to your Android device

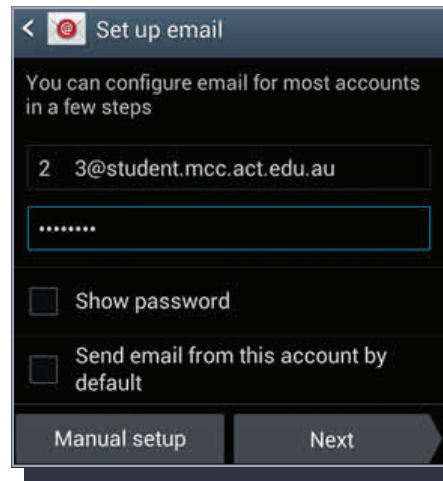
Click on the 'Settings' button on your Home Screen, then select '**Microsoft Exchange ActiveSync**'



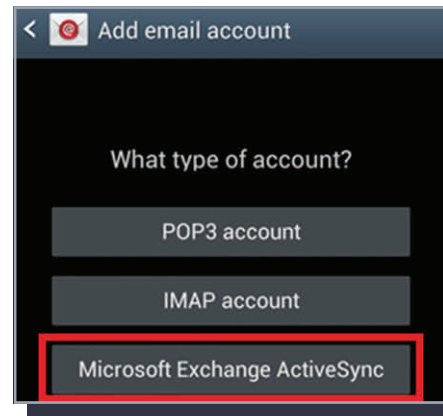
Select '**Email**' as the account you would like to add



Enter your **full College e-mail address** as shown below, followed by your password

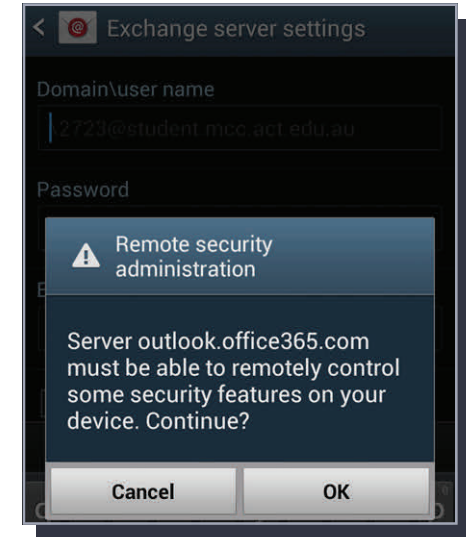


Select '**Microsoft Exchange ActiveSync**' as the type of



Your device should then proceed to pull in the required information automatically, if it does not your Domain**username** is your **full College e-mail address**, and the server is **outlook.office365.com**

You may be notified that some security features on your device may be remotely controlled



Adjust the syncing options as required, and complete the process

