

PROPRIETARY ITEM: WARRIOR FZ WINDOWS AND DOORS

FIRE RESISTANT GLASS WINDOWS AND DOORS

PART 1 - GENERAL

1.01 SUMMARY

- A. Section Includes:
 - 1. Fire resistant fixed glazed window systems.
 - 2. Fire resistant fixed & operable window systems
 - 3. Fire resistant fully glazed hinged & sliding fire doors
- B. Related Requirements:
 - 1. Load Bearing Header Framing
 - 2. Finish: Powder coating of specified components.
 - 3. Preparation of wall openings
 - 4. Water proofing

1.02 REFERENCES

- A. National Construction Code (NCC15):
 - 1. Volume 1, Clause C3.4 Acceptable methods of protection
 - 2. Volume 1, Clause A2.3 Fire Resistance of Building Elements
 - 3. Volume 1, Clause J0.2 Heating and cooling loads of sole-occupancy units of a Class 2 building or Class 4 part.
 - 4. Volume 2, Clause 3.12.2.1 External Glazing (Energy Efficiency)
 - 5. Volume 1, Clause F5.5 Sound insulating ratings of walls
- B. Standards:
 - 1. AS1530.4 – Methods for fire tests on building materials, components and structures, Part 4 Fire-resistance test of elements of construction.
 - 2. AS1288 – Glass in Buildings – Selection and Installation
 - 3. AS2208 – Safety glazing materials in buildings
 - 4. AS2047 – Windows in buildings – Selection and Installation
 - 5. AS4055 – Wind loads for housing (Class 1 and 10 Buildings)
 - 6. AS3959 – Construction of buildings in bushfire-prone areas

1.03 SUBMITTALS

- A. Comply with Submittal Procedures:
 - 1. NCC Clause A2.3 Evidence of Suitability – submit Formal Opinion from a Registered Testing Authority clearly identifying maximum Fire Resistance Level and maximum allowable sizes.
 - 2. Manufacturers Product data
 - 3. Shop drawings:
 - i. Window and/or door location and unique identification (tag) number
 - ii. Include opening dimensions
 - iii. Show and identify related work performed under other sections of the specifications including access and electrical requirements
 - 4. Quality Assurance/Control Submittals:
 - i. Site Inspection and Test Plan.
 - ii. Manufacturers ISO 9001 Certificate of Accreditation

1.04 CLOSEOUT SUBMITTALS

- A. Comply with Project Closeout:
 - 1. Certificate of Compliance with reference to;
 - i. Unique window and/or door location and identification (tag) number and
 - ii. Relevant clauses of NCC15 and Evidence of Suitability report number.
 - 2. Operation and maintenance manual.
 - 3. Manufacturer's warranty.

1.05 QUALITY ASSURANCE

- A. Certifications:
 - 1. AS1530.4 full scale fire test on a complete assembly in a fire rated masonry/concrete slab
 - 2. AS3959 Clause 9.5.2 (b) (i)
- B. Pre-Installation Meeting:
 - 1. Schedule and convene a pre-installation meeting prior to commencement of field operations with representatives of the following in attendance: Owner, Architect, General Contractor, fire curtain sub-contractor, mechanical sub-contractor, electrical sub-contractor, and ceiling/fitout sub-contractor
 - 2. Review substrate conditions, requirements of related work, installation instructions, storage and handling procedures, and protection measures.
 - 3. Document the responsibilities of various parties and deviations from specifications and installation instructions.

1.06 DELIVERY, STORAGE, AND HANDLING

- A. Comply with project delivery, storage, and handling requirements.
- B. Comply with manufacturer's instructions.

1.07 WARRANTY

- A. Provide manufacturer's conditional one year warranty for Defect Liability Period.
- B. Provide manufacturer's standard 12 month product and installation warranty in conjunction with a Bushfire Control's standard 5 + 5 year maintenance contract
- C. Maintenance and Testing:
 - 1. Perform minimum quarterly maintenance and testing on each fire curtain as required by the manufacturer's warranty, AS1851 - Maintenance, and as required by the Fire Engineers Report.
 - 2. Provide Commissioning documentation including Project name, project address, location and curtain number, number of cycles tested, observations, comments (eg: curtain out of alignment), notes (eg: curtain alignment repaired), Pass/fail.
 - 3. Re-certification after the defect liability period

PART 2 - PRODUCTS

2.01 MANUFACTURED UNITS

- A. Proprietary item;
 - i. Model Warrior FZ fixed fire window
 - ii. Model Warrior FZ fully glazed sliding fire door
 - iii. Model Warrior FZ fully glazed hinged fire door
 - iv. Model Warrior FZ operable fire window.
- B. Manufacturer:
 - 1. Smoke Control Systems Pty Ltd
 - 2. Distributed by Bushfire Control Pty Ltd
- C. Label each window and door with following information:
 - 1. Manufacturer's name and contact details.
 - 2. System location and unique identification number
 - 3. Fire Resistance Level -/30/-
 - 4. Date of installation
 - 5. Glass label to be acid etched in accordance with AS2208 Safety Glass, Clause 1.7.

2.02 DESIGN CRITERIA

- A. Country of Manufacture: Australia
- B. Maximum allowable opening size (Single pane):
 - i. Model Warrior FZ fixed fire window without.
 - a. 2200 (h) x 1700mm (w) without mullions or transoms
 - b. 2950 (h) x 1300mm (w) without mullions or transoms
 - c. 2950 (h) x unlimited (w) when incorporating mullions
 - ii. Model Warrior FZ fully glazed fire door
 - a. Single leaf; 2850 (h) x 1200mm (w)
 - b. Double leaf; 2850 (h) x 2400mm (w)
 - iii. Model Warrior FZ Awning Window
 - a. 1500 (h) x 1200mm (w)
- C. Frame profile type;
 - i. galvanized steel
 - ii. stainless steel (required within 500m of salt water, strongly recommended within 3km of salt water)
- D. Frame profile nominal dimensions;
 - i. Type C: 50 x 50mm
- E. Beading; concealed fixing, snap on bead with sufficient thermal expansion clearance to comply with fire tested prototype.
- F. Glass type; Monolithic 8mm thick fire resistant, Class A safety glass

- G. Glazing accessories; Provide approved BLACK glazing gaskets, fire resistant glazing sealants, glazing tapes, setting blocks, spacers, edge blocks, and other glazing accessories that are compatible with glazing products and each other
- H. Hardware; approved hardware only (contact Smoke Control for compatible options to those listed below)
- i. Fixed window; N/A
 - ii. Door
 - a. *Single leaf;*
 - Closer; Dorma TS93
 - Lock; Lockwood 5582 mortice
 - Handle; Lockwood 4800 series or 5800 series lever handles
 - Strike; Universal stainless steel
 - Hinges; Proprietary screw on 100 x 80mm
 - b. *Double leaf;*
 - Active leaf
 - Closer; Dorma TS93
 - Lock; Lockwood 5582 mortice
 - Handle; Lockwood 4800 series or 5800 series lever handles
 - Strike; Universal stainless steel
 - Sequence selector; TS93 GSR
 - Hinges; Proprietary screw on 100 x 80mm
 - Inactive leaf
 - Closer; Dorma TS93
 - Handle; Lockwood 4800 series or 5800 series lever handles
 - Strike; Universal stainless steel
 - Head latch; Auto flush bolt
 - Hinges: Proprietary screw on 100 x 80mm
 - iii. Automatic closing window; proprietary window stay, latch and hinge system.
- I. Finishes;
- a. *Option 1; Dulux Duralloy colour range;*
 - b. *Option 2; other as specified here*
- J. Opening preparation; structural opening prepared with head and sill flashing by builder in accordance with “An Industry Guide to the Correct Installation of Windows and Doors”, Australian Window Association (AWA), ready to take fixings on all four sides for installing windows and 3 sides for installing doors. Installation clearance to be sealed with approved fire resistant sealant. Storm moulds and water proofing by builder.
- K. Mounting orientation; as per approved shop drawings

2.03 PERFORMANCE CRITERIA

1. Fire Resistance Level (FRL): -/30/-
2. Fabrication; Fabricate glazing units in sizes required to fit openings indicated for Project, with edge and face clearances, edge and surface conditions, and bite complying with written instructions of product manufacturer and referenced glazing publications, to comply with system performance requirements.
3. Safety Glass; Class A safety glass as defined by AS2208 Safety Glazing Materials in Buildings

4. Maintenance shall be conducted quarterly by the Manufacturer and/or their nominated representative to the Manufacturers recommendations and for warranty compliance.

PART 3 - EXECUTION

3.01 EXAMINATION

- A. Examine substrates upon which work will be installed.
 1. Verify related work performed under other sections is complete and in accordance with shop drawings.
 2. Verify wall surfaces are acceptable for installation of window or door system components
 3. Verify setout point locations.
- B. Coordinate with responsible entity to perform corrective work on unsatisfactory substrates.
- C. Commencement of work by installer is acceptance of substrate.

3.02 INSTALLATION

- A. Install fire resistant glazing system components in accordance with fire test approvals and manufacturer's installation instructions.
- B. Protect glass edges from damage during handling and installation. Remove damaged glass from work area and legally dispose of. Damaged glass is glass with edge damage or other imperfections that, when installed, could weaken glass and impair performance and appearance.
- C. Do not exceed edge pressures stipulated by glass manufacturers for installing glass lites
- D. Install setting blocks, sized and located to comply with referenced glazing publications unless otherwise required by glass manufacturer.
- E. Cut BLACK glazing tape to lengths recommended by gasket manufacturer to fit openings.
- F. Position tapes on fixed stops so that, when compressed by glass, their exposed edges are flush with or protrude slightly above sightline of stops.
 - i. Install tapes continuously, but not necessarily in one continuous length. Do not stretch tapes to make them fit opening.
 - ii. Cover vertical framing joints by applying tapes to heads and sills first and then to jambs. Cover horizontal framing joints by applying tapes to jambs and then to heads and sills.
 - iii. Place joints in tapes at corners of opening with adjoining lengths butted together, not lapped.
- G. Center glass lites in openings on setting blocks and press firmly against tape by inserting dense compression gaskets formed and installed to lock in place against faces of removable stops. Start gasket applications at corners and work toward centers of openings
- H. Apply cap bead of elastomeric sealant over exposed edge of tape.
- I. Tool exposed surfaces of sealants to provide a substantial washaway from glass
- J. Immediately after installation, remove nonpermanent labels and clean surfaces.
- K. Builder to protect glass from contact with contaminating substances resulting from construction operations. Examine glass surfaces adjacent to or below exterior concrete and other masonry surfaces at frequent intervals during construction, but not less than once a month, for buildup of dirt, scum, alkaline deposits, or stains. Clean as required.

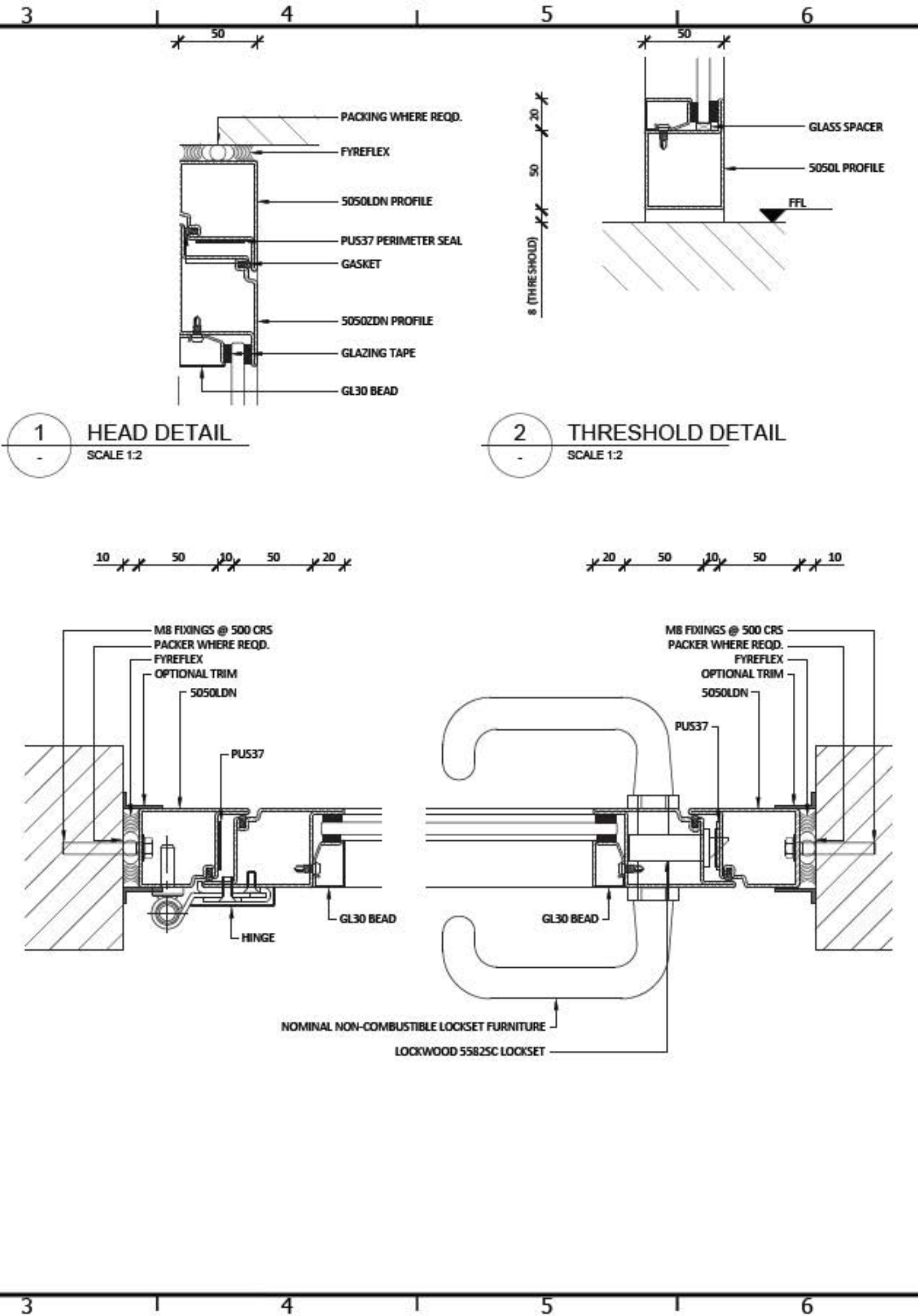
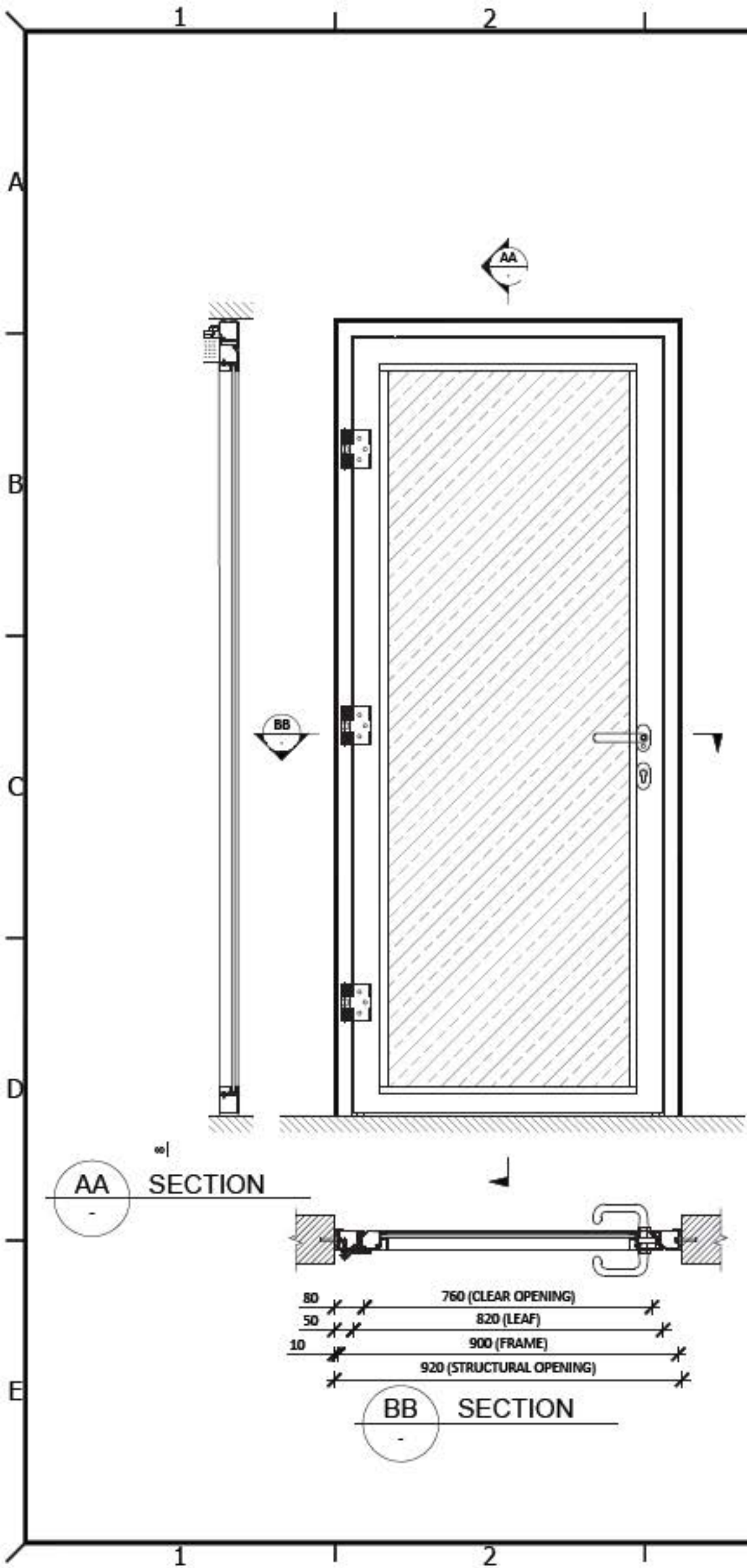


- L. Remove and replace glass that is damaged during construction period.

3.03 FIELD QUALITY CONTROL

1. Inspect installed window, ensure perimeter is sealed against opening prior to fitting storm molds.
2. Ensure water proofing is in place and effective. The window sub-contractor is responsible for water proofing between the glass and the frame. The builder is responsible for waterproofing the opening including the perimeter of the window frame between the frame and the opening.

END OF SECTION



1. THESE DRAWINGS REPRESENT THE DESIGN OF THE ARCHITECT, AND ARE NOT TO BE REPRODUCED, COPIED OR USED FOR ANY OTHER PROJECT WITHOUT THE WRITTEN CONSENT OF THE ARCHITECT.
2. THE ARCHITECT IS NOT RESPONSIBLE FOR THE ACCURACY OF THE INFORMATION PROVIDED BY OTHERS.
3. THE ARCHITECT IS NOT RESPONSIBLE FOR THE ACCURACY OF THE INFORMATION PROVIDED BY OTHERS.
4. THE ARCHITECT IS NOT RESPONSIBLE FOR THE ACCURACY OF THE INFORMATION PROVIDED BY OTHERS.

REV	CHK	REVISION / REASON	DATE
A	XX	TEMPLATE	08/11/2013

APPROVAL

DATE: _____



PROJECT _____

CLIENT _____

PROJECT COORDINATOR _____

M: _____

E: _____

TITLE _____

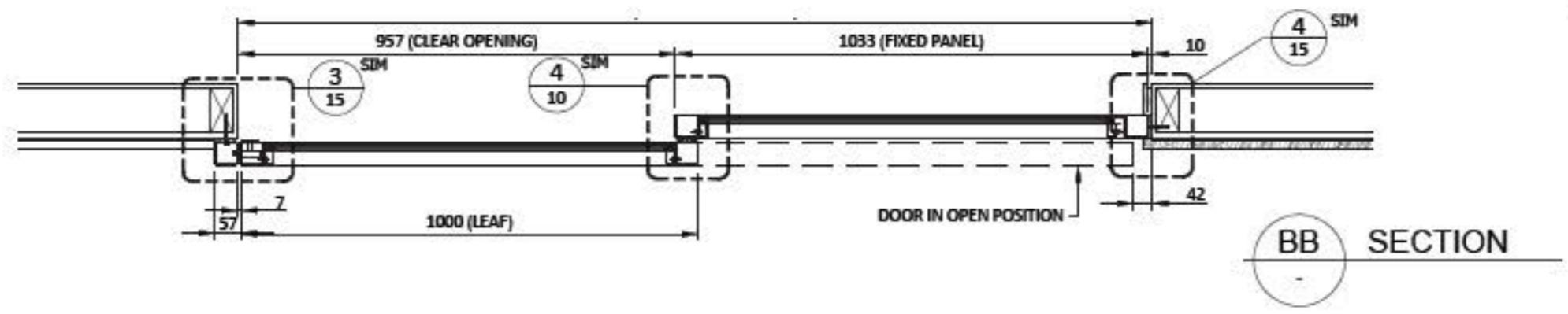
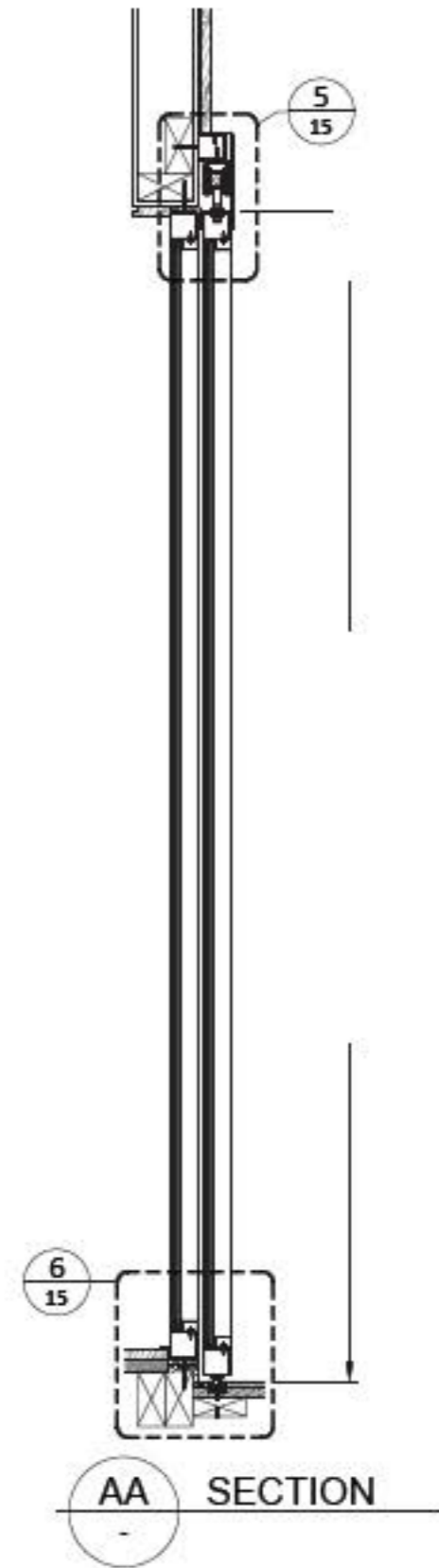
DRAWN BY	DWG#	REV.
STARTED	SCALE	OF
	PAGE	OF

1 2 3 4 5 6 7 8 9 10 11

A
B
C
D
E
F
G
H
I

* THE DRAWING CONFORMS AND THE LIABILITY OF THE ARCHITECT REMAINS UNCHANGED. COPIES OF THIS DRAWING ARE NOT TO BE MADE WITHOUT THE WRITTEN PERMISSION OF THE ARCHITECT.
 ** THE ARCHITECT IS NOT RESPONSIBLE FOR THE ACCURACY OF THE INFORMATION PROVIDED BY OTHERS.
 *** THE ARCHITECT IS NOT RESPONSIBLE FOR THE ACCURACY OF THE INFORMATION PROVIDED BY OTHERS.

REV/CHK	REVISION / REASON	DATE
A	FP FOR APPROVAL	09/09/2014
B	FP FOR APPROVAL	15/09/2014
C	FP CONSTRUCTION	25/09/2014



APPROVAL

DATE: _____



PROJECT	
CLIENT	
COORDINATOR	
TITLE	SD103/W111, SD102/W108 SINGLE SLIDING DOORS
DRAWN BY	IGOR REBENKO
STARTED	08/09/2014
SCALE:	1:10 @ A2
	PAGE 14 OF 17

1 2 3 4 5 6 7 8 9 10 11