



Day 1, August 15th, 2017

10:00 - 11:00	Registration		
	User Group	Business Application Examples for TM1	TM1 Skills Benchmarking
11:00 - 11:45	●●● Pulse User Group Vincent Viau, Cubewise CODE	●●● Merchandise Planning Nathan Swan, Cubewise	●●●●● Test your skill in TM1 Reporting Bryan Wan, Cubewise EDU
11:45 - 12:30		●●● Workforce Planning Sreenivas Tata, Cubewise	
12:30 - 13:30	Lunch		
13:30 - 14:15	●●●●● Technical Advisory invite only Thomas Jensen, Cubewise	●●● Financial Planning beyond P&L Andreas Alex, Cubewise	●●●●● Test your skill in TM1 Modelling Bryan Wan, Cubewise EDU
14:15 - 15:00			
15:00 - 15:30	Afternoon Tea		
15:30 - 16:15	●●●●● Technical Advisory invite only Thomas Jensen, Cubewise	●●● Industrial Engineering Planning Wei Wang, Cubewise	●●●●● Test your skill in TM1 Administration Bryan Wan, Cubewise EDU
16:15 - 17:00			

TM1 and Planning Analytics

user conference



10:00 – 11:00

Registration

Get your pass for the conference and network with your peers over tea and coffee.

User Group

Business Applications for TM1

TM1 Skills Benchmarking

11:00 – 12:30

Pulse User Group

Get the latest news on Pulse, learn a new way to access Pulse databases and Customer feedback sessions.

Vincent Viau, Cubewise CODE

Merchandise Planning

See a working Retail Merchandise Planning application and understand how features like drill through, sandboxing, spreading and more can be best applied to make it very powerful.

Nathan Swan, Cubewise

Workforce Planning

Using the example of shiftwork for a mining company, see how TM1 can do detailed resource planning for the workforce. Loads of tips and tricks on TM1 modeling and how to use often forgotten features of TM1.

Sreenivas Tata, Cubewise

Test your skill in TM1 Reporting

Have you ever wanted to know:
 ..where are my TM1 strengths?
 ..where do I need to improve?
 ..where do I rank versus others?
 ..do I have the capability of a TM1 Consultant?

Register your interest to edu@cubewise.com

Spaces are limited.

Bryan Wan, Cubewise EDU

13:30 – 15:00

Technical Advisory

Invite Only.

Thomas Jensen, Cubewise

Financial Planning beyond P&L

Almost everyone does P&L based planning processes, but why not Balance Sheet and Cashflow? In this session, see how a TM1 model for integrated Profit and Loss, Balance Sheet, Cash Flow and financial KPIs can look and its benefits

Andreas Alex, Cubewise

Test your skill in TM1 Modelling

Have you ever wanted to know:
 ..where are my TM1 strengths?
 ..where do I need to improve?
 ..where do I rank versus others?
 ..do I have the capability of a TM1 Consultant

Register your interest to edu@cubewise.com

Spaces are limited.

Bryan Wan, Cubewise EDU

15:30 – 17:00

Technical Advisory

Invite Only.

Thomas Jensen, Cubewise

Industrial Engineering Planning

See a TM1 model that offers standardising of machine throughput modeling with ability to forecast output based on underlying assumptions for semiconductor manufacturing. This empowers the Industrial Engineering team to test and monitor the key drivers on the production floor for each manufacturing process to optimise machine output.

Wei Wang, Cubewise

Test your skill in TM1 Administration

..where are my TM1 strengths?
 ..where do I need to improve?
 ..where do I rank versus others?
 ..do I have the capability of a TM1 Consultant

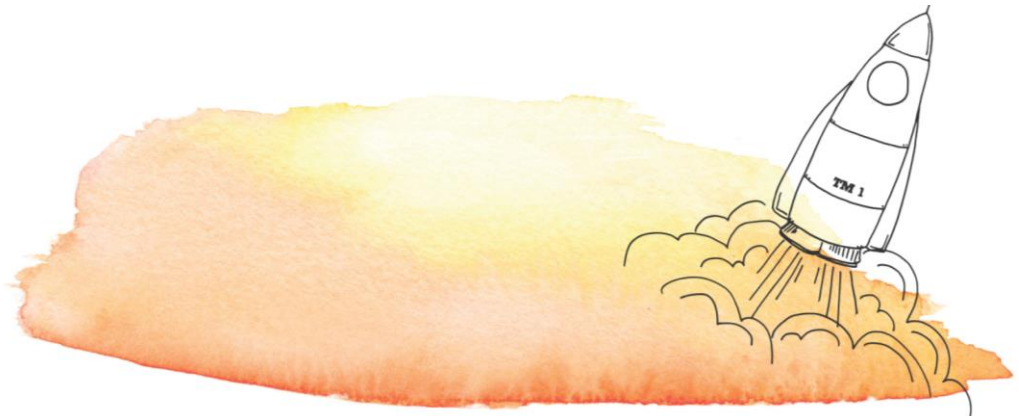
Register your interest to edu@cubewise.com

Spaces are limited.

Bryan Wan, Cubewise EDU

TM1 and Planning Analytics

user conference



Day 2, August 16th, 2017

8:00 -8:30	Registration		
8:30 -9:00	Welcome Ben Heintl, Cubewise		
9:00 -9:45	Opening Keynote Matt Parker, Comedian & Author		
9:45 -10:30	Planning Analytics (TM1) Roadmap Hubert Heijkers, IBM		
10:30 -10:50	Morning Tea		
10:50 -12:30	Customer Vignettes A rapid-fire series of nine quick vignettes from customers on inspiring projects. Sometimes the smallest things are the most inspiring. The goal is to quickly provide you with many good, real-life ideas to take back to the office and apply the next day. This was the most popular session at last year's Conference!		
12:30 -13:30	Lunch		
	Tips and Tricks	Real Life Applications	Future of TM1
13:30 -14:15	•• Planning Analytics Workspace, Excel, etc. How to get the best of it Andrey Eremenko, Cubewise	•• Eradicating performance problems in TM1 forever David Sauren, Cubewise	•• Awesome dashboards with Cognos Analytics Nimeesh Kaushal, Cubewise
14:20 -15:05	•• How to tame drill-through Xcelerated	•• User Experience Development Sandesh Sawant, Cubewise	••• Planning Analytics Workspace Roy Burton, Cubewise
15:05 -15:20	Afternoon Tea		
15:20 -16:05	•• Board reports made easy. Reporting with CDM Benjamin Siu, Cubewise	•• Apliqo C3 User Experience Andreas Alex, Cubewise	••• Planning Analytics for Excel Kemp Zhong, Cubewise
16:10 -16:55	•• Excel Beautification Gary Ng, Cubewise	•• Customer Case Study	•• The evolution of Apliqo C3's user experience Francisco Santos, Cubewise
17:00 -17:30	Keynote Wrap Up Matt Parker, Comedian & Author		
17:30 onwards	Canapés and Networking		



8:00 – 8:30

Registration

Get your pass for the conference and network with your peers over tea and coffee.

8:30 – 9:00

Opening Remarks

A quick overview of what to expect at the Conference and a view of the year ahead for TM1.

*Ben Heini
Cubewise, Director*

9:00 – 9:45

Opening Keynote

Comedian and number ninja Matt Parker is our Conference MC! Matt is an avid YouTuber with the knack of making Maths entertaining and interesting. Matt has over 300k followers and millions of views on YouTube, in addition he has presented on BBC. What will he have to say about TM1?

Matt Parker, Comedian & Author

9:45 – 10:30

Planning Analytics (TM1) Roadmap

Get the latest roadmap update direct from IBM – what are the coolest new features to drool over?

Hubert Heijkers, IBM

10:50 – 12:30

Customer Vignettes

A rapid-fire series of nine quick vignettes from customers on inspiring projects.

Sometimes the smallest things are the most inspiring. The goal is to quickly provide you with many good, real-life ideas to take back to the office and apply the next day. This was the most popular session at last year's Conference!

Nine Different TM1 Customers

13:30 – 16:55

We break into four streams

See next page for more details

17:00 – 17:30

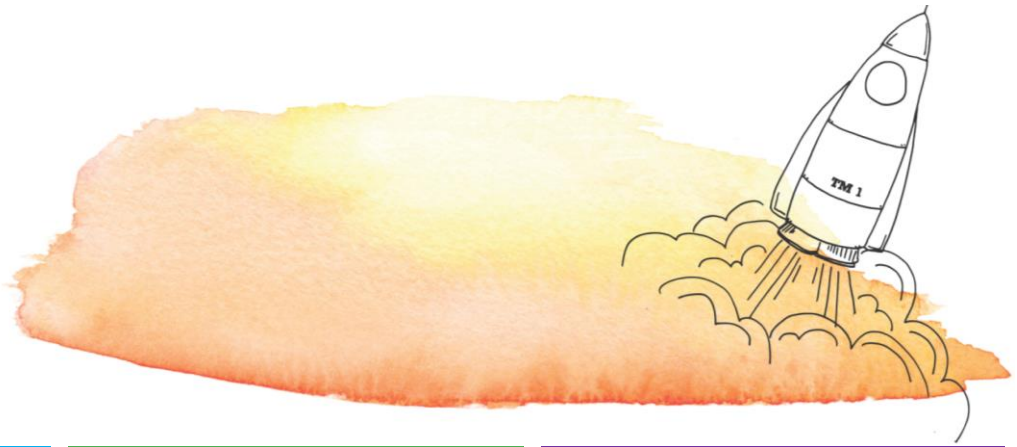
Keynote Wrap Up

Matt will wrap up the day with a dynamic and unique way of using TM1. See what he has in store!

Matt Parker, Comedian & Author

TM1 and Planning Analytics

user conference



Tips and Tricks

Real Life Applications

Future of TM1

13:30 – 14:15

Planning Analytics Workspace, Planning Analytics for Excel, etc. - How to get the best of it

Planning Analytics is here! Learn how you can benefit from its shiny new features.

Andrey Eremenko, Cubewise

Eradicating performance problems in TM1 forever

Assessing and improving performance of a TM1 solution is one of the biggest challenges once it is rolled out to the user community. This session will show you how Cubewise has developed tools and processes to address this challenge. This session is part of our journey to help you eradicate TM1 performance problems forever.

David Sauren, Cubewise

Awesome dashboards with Cognos Analytics

Dashboarding capability against OLAP datasources such as TM1 is now available in Cognos Analytics Release 6. Learn more on how you can build awesome interactive self-service enabled dashboards using TM1 packages and/or Planning Analytics Cubes.

Nimeesh Kaushal, Cubewise

14:20 – 15:05

How to tame drill-through

Drill-through is so easy and so powerful! Learn how drill-through works and what you can do to set it up and make drilling from cube to cube, or from cube to data source easy.

Ben Heini, Cubewise

User Experience Development

UX design does not come naturally to Financial Application developers. It is however, a critical piece to the application puzzle. Sandesh will present the process of designing high-quality, functional designs using best practice process and tools.

Sandesh Sawant, Cubewise

Planning Analytics Workspace (PAW)

Join us for an in-depth look at Planning Analytics Workspace. We'll explore some of the feature enhancements and capabilities of the new interface for TM1.

Roy Burton, Cubewise

15:20 – 16:05

Board reports made easy. Reporting with CDM

CDM (Cognos Disclosure Management) offers many benefits, one of the best of which is the ability to easily create collaboratively compiled board reporting packs and embed them in PowerPoint.

Benjamin Siu, Cubewise

Apliqo C3 User Experience

What the TM1 world has been waiting for ever since its inception: modern, customisable interfaces. Andreas will show examples of real application interfaces running at customer sites and show how the latest web technologies can make end-user experience like we've never seen before.

Andreas Alex, Cubewise

Planning Analytics for Excel

Join this session and learn more on how to perform analysis while retaining spreadsheet formatting and functionality within the new Planning Analytics for Microsoft Excel.

Kemp Zhong, Cubewise

16:10 – 16:55

Excel Beautification

It is still important! Despite all of the other tools for reporting on TM1 – the TM1 Perspectives add-in is still by far the most popular. Learn new tricks and techniques to make your TM1 Excel-based reports more functional and appealing.

Gary Ng, Cubewise

Customer Case Study

See a real life TM1 application from a customer and hear their lessons learned.

Cubewise

The evolution of Apliqo C3's user experience

See the latest in this rapidly evolving space. TM1 customers worldwide have been developing amazing new User Experiences into beautiful and powerful web applications for TM1. See the latest!

Francisco Santos, Cubewise

TM1 and Planning Analytics

user conference



Day 3, August 17th, 2017

8:00 - 8:30	Registration			
8:30 - 9:00	The Future of TM1 according to Manny Manny Perez, creator of TM1			
9:00 - 10:30	Think Tank Showdown Similar to the Customer Vignettes on Day 2, but this time we get the greatest TM1 gurus in the TM1 customer base (AKA the Think Tank) to run through a series of more technical deep dive topics.			
10:30 - 10:50	Morning Tea			
	Power User Deep Dive	Developer Deep Dive	Architect Deep Dive	Back By Popular Demand & Hands-On
10:50 - 11:35	⋮ Dealing with Allocations Dmitry Fomichev, Cubewise	⋮ The TM1 Server According to Hubert Hubert Heijkers, IBM	⋮ MDX in TM1 Applications Marius Wirtz, Cubewise	A Presentation from Day 1 or 2 that people did not get to see, but would like to. Voted on by attendees
11:40 - 12:25	⋮ Dealing with Reconciliation Rodrigo Maziero, Cubewise	⋮ Smart Month Proportions for Allocations Kemp Zhong, Cubewise	⋮ Onsite vs Offsite managed services Sukumar Patnaikuni, Cubewise	A Presentation from Day 1 or 2 that people did not get to see, but would like to. Voted on by attendees
12:30 - 13:30	Lunch			
13:30 - 14:15	⋮ Dealing with Workflow Jean Noel Grandry, Cubewise	⋮ Bulletproof Cube Design Ram Jambunathan, Cubewise	⋮ Relational vs Multi-dimensional data staging Dmitry Fomichev, Cubewise	⋮ Pulse Hands-On Lab Vincent Viau Cubewise CODE
14:20 - 15:05	⋮ Troubleshooting Turbo Integrator & Rules Irene Mok, Cubewise	⋮ Automated TM1 Charts Piotr Rajtar, Cubewise	⋮ Dimensions vs Hierarchies Roy Burton, Cubewise	⋮ Canvas Hands-On Lab Vincent Viau Cubewise CODE
15:05 - 15:20	Afternoon Tea			
15:20 - 16:00	Moderated Panel Discussion			
16:00 - 16:30	Closing Remarks Ben Heini, Cubewise			



8:00 – 8:30

Registration

Network with your peers over tea and coffee.

8:30 – 9:00

The Future of TM1 According to Manny

Throughout TM1's life, Manny has seen his product evolve from a garage project to one that is owned by one of IT's influential companies, IBM. He has seen TM1 grow up from 32 to 64 bit and the addition of these key features TM1Web, Active Forms, Parallel Interaction, REST API and now a name change to Planning Analytics with Hierarchies.

Hear from Manny where the future of TM1 could be.

Manny Perez, Creator of TM1

9:00 – 10:30

Think Tank Showdown

Similar to the Customer Vignettes on Day 2, but this time we get the greatest TM1 gurus in the TM1 customer base (AKA the Think Tank) to run through a series of more technical deep dive topics.

Various Customers

10:50 – 15:05

We break into four streams

See next page for more details

15:20 – 16:00

Moderated Panel Discussion

Have a topic you would like our panelist to discuss? Log onto our conference web app, app.conference.com, and provide us your thoughts!

Cubewise

16:00 – 16:30

Closing Remarks

The last session for this year's Australian TM1 User Conference. Stay tuned to hear Ben's insights and more!

Ben Heini, Cubewise

TM1 and Planning Analytics

user conference



Power User Deep Dive	Developer Deep Dive	Architect Deep Dive	Back by Popular Demand & Hands-On
-----------------------------	----------------------------	----------------------------	--

10:50 – 11:35

<p>Dealing with Allocations</p> <p>Come and get some ideas on how to manage your financial allocations via simple and yet efficient TM1 designs supported by clever reports.</p> <hr/> <p><i>Dmitry Fomichev, Cubewise</i></p>	<p>The TM1 Server According to Hubert</p> <p>Get it straight from the man himself! Hubert will be in typical high energy mode to tell you the latest and greatest about the TM1 server.</p> <hr/> <p><i>Hubert Heijkers, IBM</i></p>	<p>MDX in TM1 Applications</p> <p>How to leverage the power of MDX in traditional and modern TM1 applications and achieve greater performance and flexibility..</p> <hr/> <p><i>Marius Wirtz, Cubewise</i></p>	<p>A Presentation from Day 1 or 2 that people did not get to see, but would like to.</p> <p>See a session you missed earlier – just make sure you vote it in!</p> <p>Go to app.tm1conference.com to vote!</p> <hr/> <p><i>Cubewise</i></p>
---	---	---	--

11:40 – 12:25

<p>Dealing with Reconciliation</p> <p>Data reconciliation is always a challenge when juggling between different tools. Come and see how TM1 can handle this task based on examples, illustrating different contexts – it doesn't need to be a headache!</p> <hr/> <p><i>Rodrigo Maziero, Cubewise</i></p>	<p>Smart Month Proportions for Allocations</p> <p>Allocations are powerful in TM1 – see this technique of how to use High performance rule-driven monthly proportions leveraging a Time Index in order to conduct Monthly Phasing.</p> <hr/> <p><i>Kemp Zhong, Cubewise</i></p>	<p>Onsite vs Offsite managed services</p> <p>Ever wondered if offsite support could be an option for your system? Join this presentation to find out its pros and cons and whether it could work for you.</p> <hr/> <p><i>Sukumar Patnaikuni, Cubewise</i></p>	<p>A Presentation from Day 1 or 2 that people did not get to see, but would like to.</p> <p>See a session you missed earlier – just make sure you vote it in!</p> <p>Go to app.tm1conference.com to vote!</p> <hr/> <p><i>Cubewise</i></p>
--	--	---	--

13:30 – 14:15

<p>Dealing with Workflow</p> <p>Many attempts to get the perfect data workflow has been tried over the past in different tools. Yet, the experience tells us 2 things: every company has its own specificities which can't fit within one box, too complex means unmaintainable. Here are some suggestions to keep it simple and under control.</p> <hr/> <p><i>Jean Noel Grandry, Cubewise</i></p>	<p>Bullet-Proof Cube Design</p> <p>How do you make cubes stand the test of time? See the tips and tricks learned from the experience of designing and implementing cubes for decades.</p> <hr/> <p><i>Ram, Jambunathan, Cubewise</i></p>	<p>Relational vs Multi-Dimensional data staging</p> <p>Sometimes there is a need for a staging layer in your TM1 application. Relational and multi-dimensional concepts are two solutions that might fit in different situations</p> <hr/> <p><i>Dmitry Fomichev, Cubewise</i></p>	<p>Pulse Hands-On Lab</p> <p>Pulse can help you to improve your Change Management process by using the change tracking, migration and user analytics features (Bring your laptop)</p> <p>Email edu@cubewise.com to register your interest, spaces are limited.</p> <hr/> <p><i>Vincent Viau, Cubewise</i></p>
--	---	---	--

14:20 – 15:05

<p>How to Troubleshoot Turbo Integrator and Rules</p> <p>As a power user, you may not need to write Turbo Integrator and Rules, but understanding how to read them and troubleshoot them could save you one day...</p> <hr/> <p><i>Irene Mok, Cubewise</i></p>	<p>Automated TM1 Charts</p> <p>See how to quickly create functional and re-usable chart templates in Excel to impress your key TM1 Users! Learn how you can combine TM1 cubes with the capabilities of TM1 Perspectives to automate the creation of TM1-based charts.</p> <hr/> <p><i>Piotr Rajtar, Cubewise</i></p>	<p>Dimensions vs Hierarchies</p> <p>Learn when to use rollups vs. dimensions and whether Planning Analytic's alternate hierarchies are a game changer.</p> <hr/> <p><i>Roy Burton, Cubewise</i></p>	<p>Canvas Hands-On Lab</p> <p>Learn how to build a TM1 data entry template using the modern web technology. Take the opportunity to learn the basics of HTML, Bootstrap and Angular (Bring your laptop).</p> <p>Email edu@cubewise.com to register your interest, spaces are limited.</p> <hr/> <p><i>Vincent Viau, Cubewise</i></p>
---	---	--	---