



LIGHTING SYSTEMS

Product(s): Clarity Software
TechNote Number: CT-N01N-A0
Revision: A0
Date: 15 Feb 2018
Circulation: External
Applicable to: Clarity for Windows
Issued by: Richie Mickan

LSC LIGHTING SYSTEMS
(AUST) PTY LTD

65-67 Discovery Road,
South Dandenong VIC
Australia 3175

T +61 (0)3 9702 8000
F +61 (0)3 9768 2631

info@lsclighting.com.au
www.lsclighting.com.au

ABN 21 090 801 675

Symptom:

Clarity runs but appears tiny on the screen. The GUI is squashed and buttons/text are all over the top of each other, rendering the software unusable.

Problem:

This occurs on high DPI screens (high resolution compared to the physical screen size). Examples include Microsoft Surface computers and 13" laptops with 4k screens.

Cause:

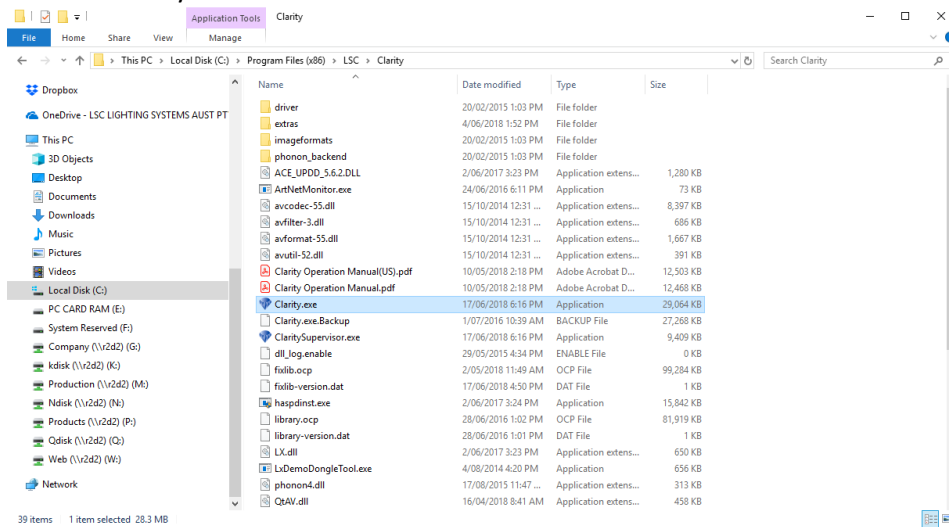
Windows has some automatic scaling features that incorrectly guess how to scale Clarity.

Solution:

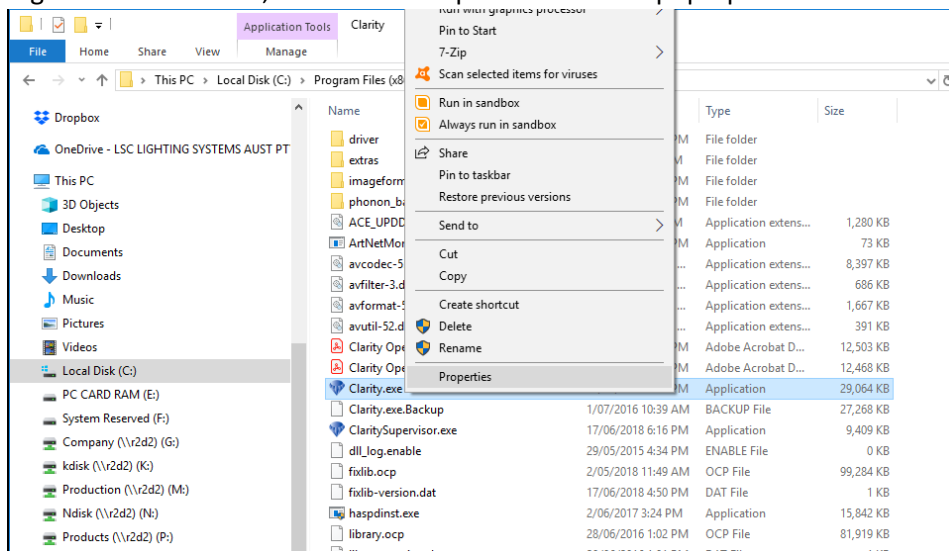
The scaling options that Windows uses for the Clarity app need to be altered to work correctly.

Procedure:

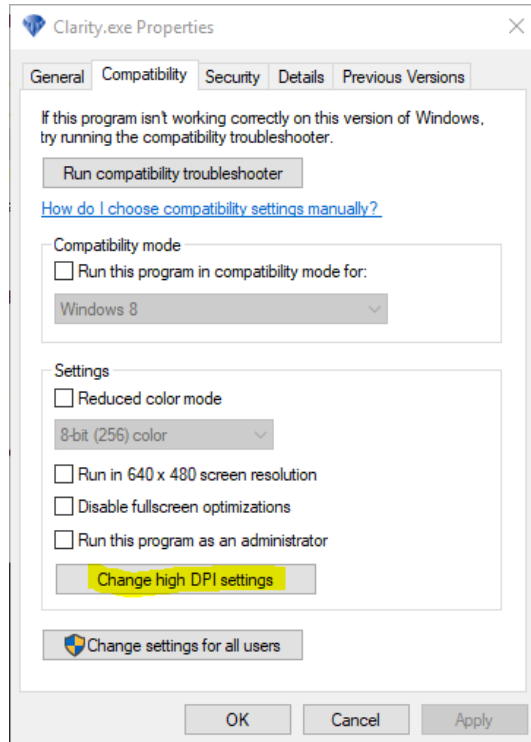
1. Navigate to the Clarity installation directory
e.g. C:\Program Files (x86)\LSC\Clarity
2. Find the Clarity.exe file.



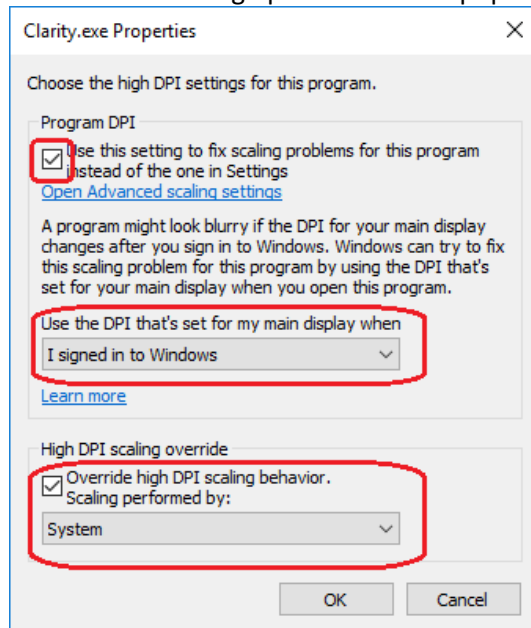
3. Right Click on this file, then select Properties from the pop-up menu.



4. In the Properties window, select the Compatibility tab.
Click on the [Change high DPI settings] button.



5. Select the following options from the pop-up window.



Ensure that the bottom option is to **System**

6. Press OK to close the pop-up windows and then press OK again to close Properties.
7. Repeat steps 3 thru 6 for the file names ClaritySupervisor.exe

End of TechNote

