

# Cone Street Park

**A concept design has been prepared for the upgrade of Cone Street Park and is now available for viewing. This has taken into consideration residents' concerns and suggestions for improvement. Work is now progressing to develop this concept into a detailed design.**



Residents' key concerns included:

- Need to maintain the overland stormwater path through the park
- Improving drainage within the site to direct water away from adjoining residential properties
- Ensuring everyone (including those with a disability) can access all parts of the park
- Maintaining the opportunity for adjoining residents to access the rear or side of their properties

Feedback indicated that residents value the open space provided by the park and felt that it was important to protect the existing mature trees within the site and introduce additional landscaping to encourage more birdlife.

The community agreed that the design should utilise the park's open and level space for more active recreation to complement the range of facilities provided at the beachfront. Residents also supported plans to renovate the existing half-court to a more contemporary design.

## The park's renovation

**The updated design envisions Cone Street Park as an extension to Shoal Point Park. The proposal is to develop additional recreational opportunities for residents which complement those available at the beachfront.**

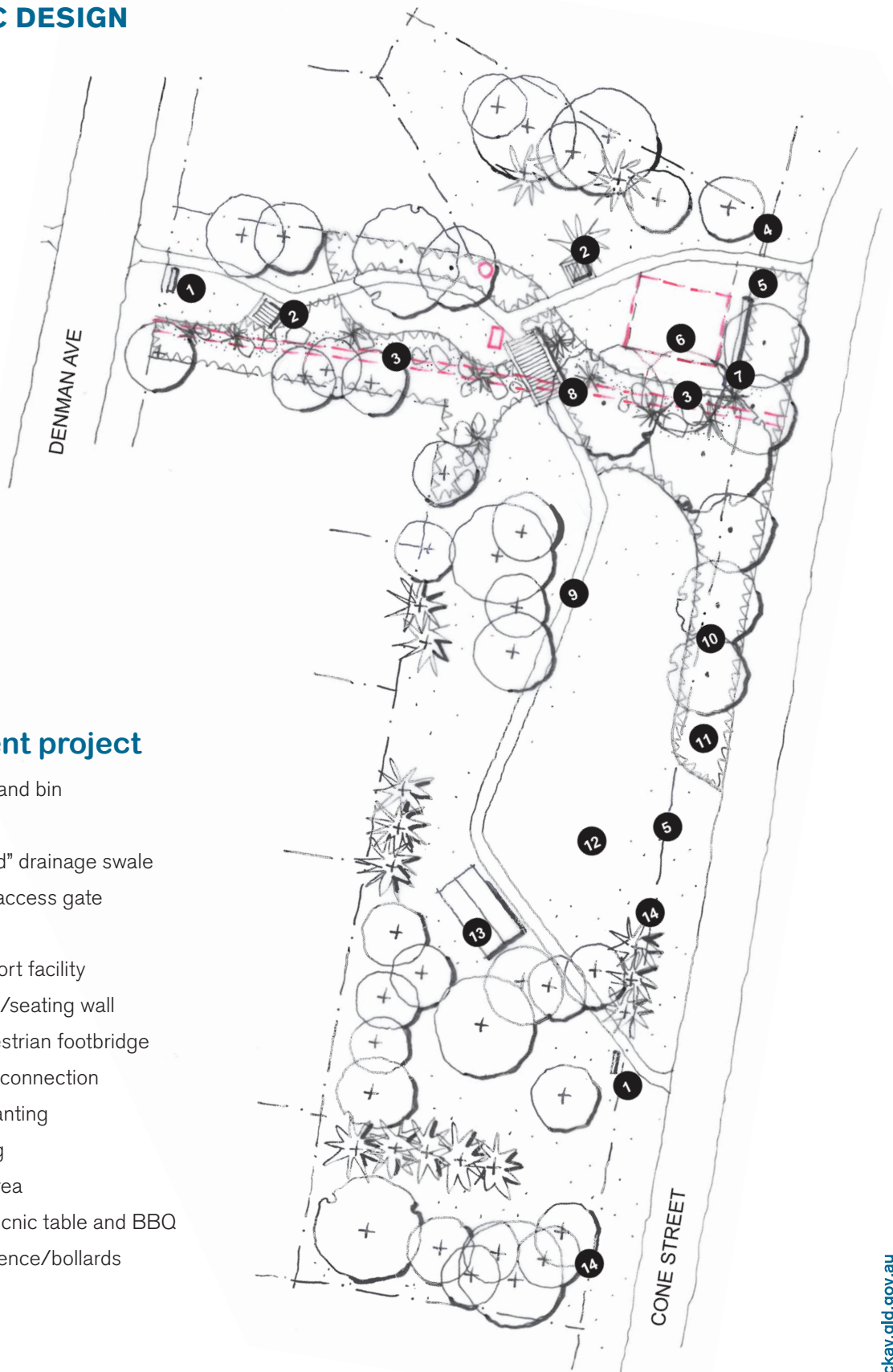
Key features of the intended park upgrade include:

- Separating pedestrian and bicycle access from the overland stormwater path. The new paths will be designed to cater for people of all abilities and will offer access to all areas of the park
- The existing narrow path will be retained to act as the base to the overland flow path. This feature will be landscaped to give a more natural appearance, mimicking a dry creek bed. It is hoped that this element will become a feature for the park. Residents might consider helping with the planting and

establishment of the swale's landscaping as a community project

- The southern portion of the park will be retained as an open area for more active recreation; a space to kick a ball or fly a kite. This area will include a furnished picnic shelter
- The existing half-court will be upgraded to a new-style multi-sports court with integrated seating and hitting wall to cater to a wider audience. The goal end will be reorientated to avoid balls ending up on the adjacent road or in the central landscape swale
- Vehicle access into and through the park will be maintained but restricted to authorised vehicles only. Residents will be able to apply to gain access to their properties as required for maintenance or delivery purposes via the on-line park booking system. This approach will ensure the safety of children and other park users.

## SCHEMATIC DESIGN



### Improvement project

1. Park signage and bin
2. Park seating
3. "Dry creek bed" drainage swale
4. Maintenance access gate
5. Water bubbler
6. Multi-court sport facility
7. Sports hit wall/seating wall
8. Culverts/pedestrian footbridge
9. New footpath connection
10. Shade tree planting
11. Law mounding
12. Kick-a-bout area
13. Shelter with picnic table and BBQ
14. Post and rail fence/bollards