



-- WORKSHOP REPORT --

Project: South Beach Basketball Court

Client: City of Fremantle

Event: Community Consultation Forum

Date: 12th November 2015
6:00pm – 8:00pm

Author: Joel Levin, Aha! Consulting

Contents:

INTRODUCTION	2
BACKGROUND	3
LOCATION OPTIONS	4
OPTION 1 – NORTHERN END	5
OPTION 2 – SOUTH EAST (BEHIND CAFE)	6
OPTION 3 – SOUTH WEST END (BEACH SIDE)	7
PREFERRED LOCATION	8
RESULTS	9
AMENITY	11
APPENDIX ONE – SESSION PLAN	13

Introduction

On November 12th 2015, the City of Fremantle hosted a workshop for the community to discuss the location of a basketball court at South Beach. 74 members of the community registered for the workshop and a total of 40 attended.

The session was facilitated by Joel Levin from Aha! Consulting and attended by

Councillors: Mayor, Mr Brad Pettitt
Deputy Mayor, Cr Josh Wilson
Cr Andrew Sullivan

City Staff: Joanne Smith - Park Manger, City Works
Jennifer Valesini - Senior Project Officer - Community Engagement,
Strategic Planning
Erinn Litchfield - Senior Project Officer - Recreation, Community
Engagement
Ella Youel - Landscape Project Officer, City Works Xxxx

The workshop had three objectives:

- Provide the background for the consultation conducted to date and the decisions made
- Confirm the location of a full size basketball court on South Beach
- Identify amenities to be included (within project budget)

Outcomes

There was a clear majority in favour of option 3 located in the southern end of South Beach on the western side of the grassed areas (see page 9 for the results).

The location would result in a slightly shorter court to avoid removal of the existing trees.

In terms of preferred amenity options, the top three preference were:

- Limestone wall
- Bench seat
- Rubbish bins



The next step is for the City to review these outcomes and plan for the installation of the court in 2016.

Background

Mayor Pettitt welcomed guests and Joanne Smith provided an overview of the project, past consultations and council decisions. Key elements of the presentation included:

- 2005 the need to reconsider the viability of the basketball court at South Beach was being considered
- 2011 a decision was taken to remove the old court
- 2013 a proposal was developed to replace the court in Wilson Park which was met with significant community concern
- 2014 a community consultation canvassed perceptions and views about the need for a basketball court
 - 52% supported a basketball court at South Beach
 - 34% opposed a basketball court at South Beach outright
- 2015 council ruled out Wilson Park as an option and resolved to locate a court at either the northern or southern end of South Beach.

Location Options

Three options were presented to the community, along with a series of pros and cons for each options. Prior to presenting the three options, the following clarifications were sought:

1) Is there an option NOT to have a court?

- a. Response from the City: Based on the consultation that has already occurred, the decision has already been taken to replace the court.
- b. Participants were given the opportunity at the end of the evening to cast a vote for no courts if they chose to vote that way.

2) Is there a chance to discuss an option other than the three presented?

- a. Response from the City: Based on the consultation that has already occurred, all other options have been ruled out for various reasons of viability.

3) Is there a chance to locate the court in the very northern end of South Beach?

- a. This area is a dog exercise area and the court would take up the entire space, hence it was not considered viable.

Considerations for all options

There were a number of considerations that were raised by the community that applied to all options discussed, these included:

- Any design needs to consider the safety of children
 - It was considered that either fencing or appropriate landscaping could be used to reduce the distance balls would travel when they leave the court
 - Hedging was suggested as an option instead of fencing in some areas
- Can asphalt be used instead of concrete as it is a more forgiving surface and there is a nominal cost difference?
- How do you ensure you are not disadvantaging a large number of the community by allocating space for a smaller number of the community to use?
 - The discussions on this reflected a need to consider ways to make the space multi-use to maximise its utilisation
- Can the surface be painted or be some colour other than concrete?
 - This could be considered budget allowing
- Universal access needs to be considered for all sites

Workshop Notes

Option 1 – Northern End



OPTION 1

Cost Estimation \$81,000

BASIC CONSTRUCT COSTS	
Project workshop costs	\$4,000
Design/Construct Contract	\$15,000
Earth works + returfing	\$ 10,000
Basketball pad + line marking	\$ 35,000
Irrigation modifications (up to)	\$ 8,000
Path access (up to)	\$ -
Basketball Hoops - Junior	\$ 7,000 (set of 2)
Basketball Hoops - senior	\$ 9,000 (set of 2)
	\$ 81,000

PROS	CONS
<ul style="list-style-type: none"> MINIMUM EARTHWORKS AND DRAINAGE COSTS ACCOMMODATES FULL COURT OR A MULTIPURPOSE COURT 32 X 19M LIMITED IMPACT ON DUNES 	<ul style="list-style-type: none"> EXPOSED TO WINDS OFF THE OCEAN SAND 'BLOW IN' ON COURT UNSCREENED PROXIMITY TO RESIDENCES ON MARINE TERRACE/ DOURO RD LOSS OF GRASSED AREA USED FOR UNINTERRUPTED VIEWS OF THE OCEAN LOSS OF HIGHLY VALUED PASSIVE RECREATION AREA HINDERS EVENTS ON SOUTH BEACH PROXIMITY TO SHOWERS LIMITED AMBIENT LIGHTING

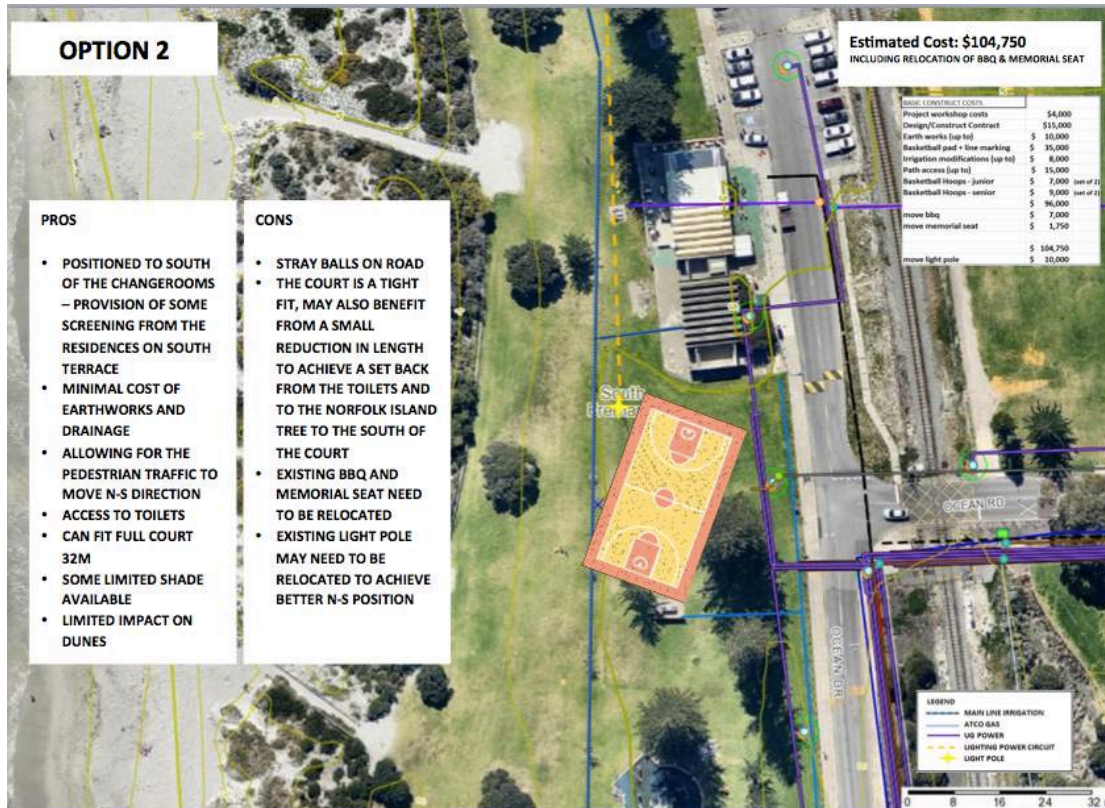
The community input and discussion into this option identified the following additional considerations:

Additional Pros	Additional Cons
<ul style="list-style-type: none"> It was seen as the most accessible option of the site for people with a disability 	<ul style="list-style-type: none"> Removes a larger section of grassed area with a view to the water In the past, with the court near the car park, people would leave car doors and radios on, creating a noise impact The space has multiple other uses It is a distance from the cafe

It was noted and discussed that this option would not have any impact on the Bather's Beach Sunset Markets.

Workshop Notes

Option 2 – South East (Behind Cafe)



The community input and discussion into this option identified the following additional considerations:

Additional Pros	Additional Cons
<ul style="list-style-type: none"> Discourage anti social behaviour, as it is in plain view of Ocean Road Some felt the area was underutilised in its current form Chance to renew/update the BBQ when relocated 	<ul style="list-style-type: none"> Some felt the area was well utilised by families and used for weddings as it is protected from the wind Proximity to the café could disturb other customers There is not great parking at the southern end of the beach The orientation could make the space congested

It was noted that there are disused septic tanks, a lamp post, a BBQ and seating that would have to be moved if this option was selected.

Workshop Notes

Option 3 – South West End (Beach Side)



The community input and discussion into this option identified the following additional considerations:

Additional Pros	Additional Cons
<ul style="list-style-type: none"> • Proximity to the café for players • It had some natural elements (slope, trees etc) that would help mitigate stray balls • The slope creates a natural amphitheatre that could open the space up for other uses 	<ul style="list-style-type: none"> • Some felt the area was well utilised by children and families as it is protected from the wind • Proximity to the café could disturb other customers • There is not great parking at the southern end of the beach • The orientation could make the space congested • The current design looks to limit pedestrian access

It was noted and discussed that this option would require the court to be shorter in length to ensure that no trees had to be removed or were damaged.

Some of the community held the view that the current trees are non-native and could be replaced with mature native trees or relocated.

Preferred Location

Prior to voting for the preferred location, the following criteria were discussed:

- **Environmental Impact**
 - (eg: dunes)
- **Impact on Others**
 - (eg: neighbouring residents, cyclists, walkers, dogs, café patrons, through traffic etc)
- **Safety**
 - (eg: Court Users, Others in the Area)
- **Cost**
- **Functionality**
 - (eg: multiple purpose, north/south orientation, fencing, power, Wifi etc)

Others considerations presented by the community were:

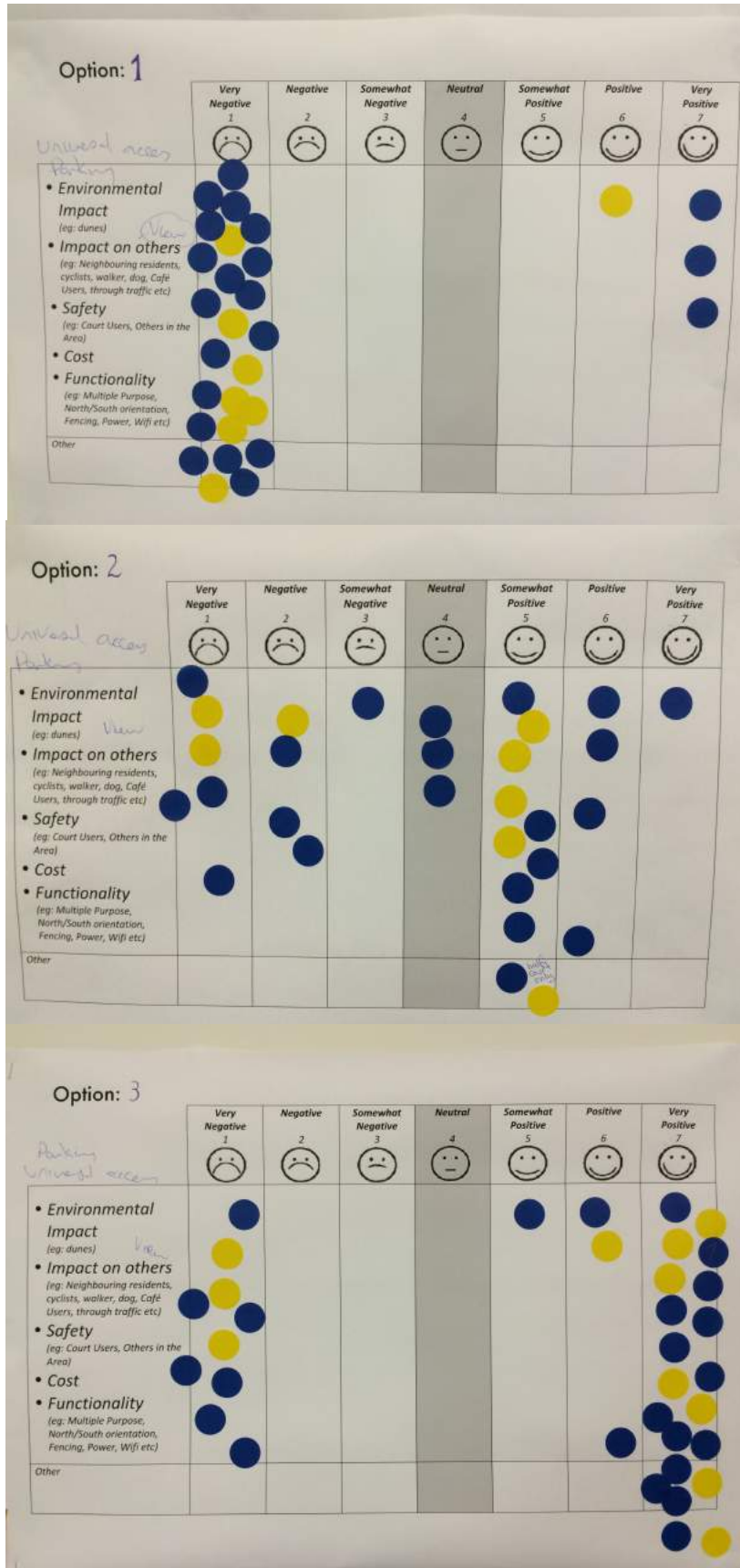
- **Ease of parking**
- **Ease of universal access for people with all disabilities**
- **Impact on the view for other beach goers**

Each participant was given one vote per option (3 votes in total) and asked to demonstrate the degree to which they felt each option met the criteria discussed.

Workshop Notes

Results

As can be seen from the charts, option 3 was clearly the preferred outcome.



Workshop Notes

As mentioned, participants were also given an opportunity to state a preference for no court to be located at South Beach.



Amenity

After consideration was given to the preferred location, participants were asked to consider the priority amenity elements. Items 1-13 on the following list were provided and items 14-17 were suggested by participants prior to further discussion.

Provided by council as a discussion starter

1	Rubbish bin each	\$3,500
2	Parking for 10 bikes	\$5,000
3	Bench seat	\$4,000
4	Shade tree	\$500
5	Shade structure	\$20,000
6	Limestone walls (est. 30meters)	\$7,500
7	Storage lockers (8)	\$500
8	Pathways / meter	\$200
9	WiFi	\$5,000
10	3.5m high fencing (est. 30meters)	\$10,650
11	Slacklining posts / pair	\$10,000
12	Court lighting off 4 poles	\$100,000
13	Booking board / system	TBA

Added by participants on the evening

14	Water fountain	TBA
15	Outdoor gym	TBA
16	Coloured / painted surface	TBA
17	Hedging	TBA

At their different tables people were asked to come up with a group ranking of the items from 1-17. The results of this tally are on the next page.

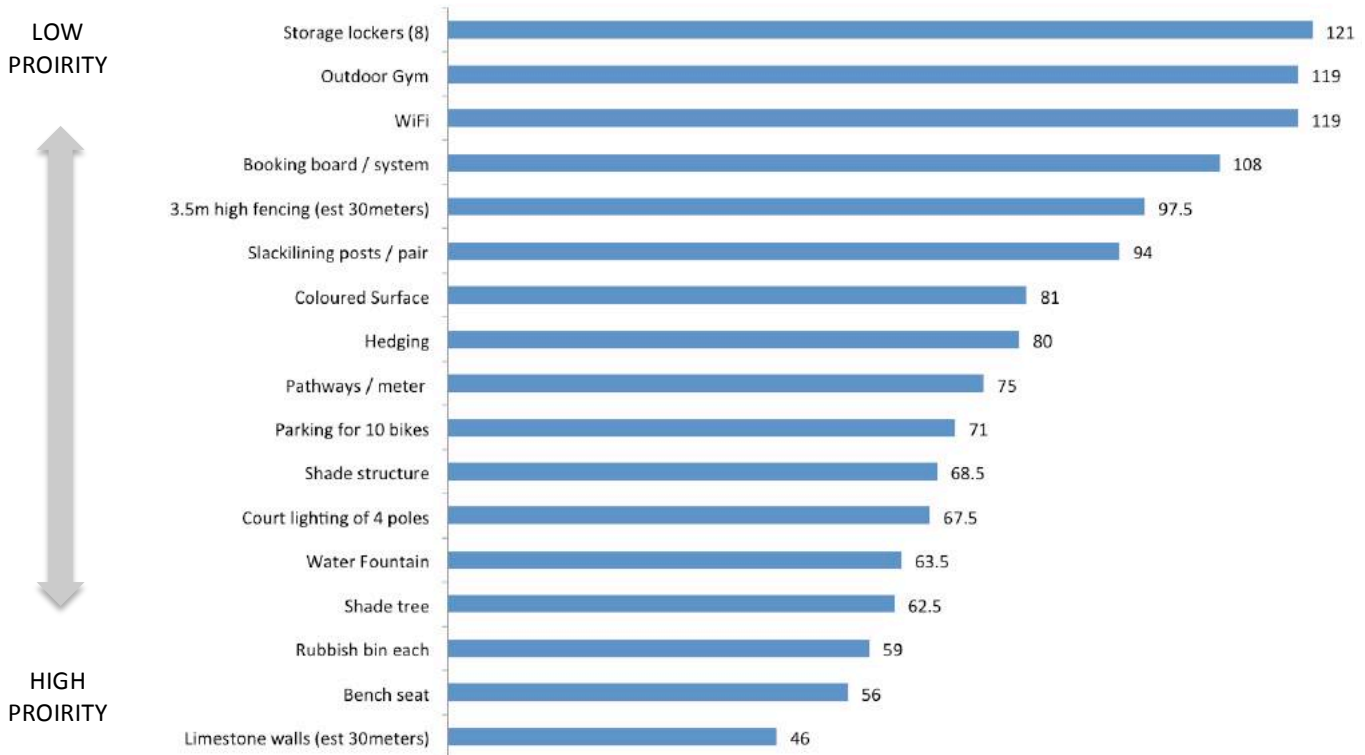
Workshop Notes

Note: Items with the fewest votes means people scored these items as a higher priority 1,2 or 3; eg: lower score = higher priority.

As can be seen by the chart below, the top three priorities on the evening were:

- Limestone wall
- Bench seat
- Rubbish bins

Tally of Preferences



The following items were added by people on the ranking sheets:

	# Votes/Comments	Rank given
Add red to asphalt	1	N/a
Multi-use for volleyball	1	10
Handicap [SIC] access (pathways)	1	
Rubberised court	1	3
More transport - extended hours	1	4
Shade trees x 2	1	N/a
Incorporate seating into limestone walls	2	1
Improvement to toilets and showers	1	1a

Note about the analysis of these results

Sheets that were returned without all items ranked (eg: blank spaces) could result in a lower than intended score for some items and thus a false priority score overall. In these instances, an average score was calculated and assigned to these unranked items.

For example: If someone prioritised 10 of the 17 items there are 7 blank items, the average score for items ranked 11, 12, 13, 14, 15, 16, 17 is 14. These 7 blank items are given a score of 14 to avoid the blank score affecting that person's priorities and the overall score.

Appendix One – Session Plan

Purpose:

- Provide input into the replacement of the basketball court at South Beach
- Provide input into the priorities for the type of facility possible within the proposed budget

6:00	Getting Started <ul style="list-style-type: none">• Welcome• House keeping-
6:10	Background <ul style="list-style-type: none">• The consultation process to date, the decision to replace the court, the options considered, the options on the table
6:25	Location <ul style="list-style-type: none">• Purpose of the session<ul style="list-style-type: none">- Confirm the location of the court- Identify the priorities for amenity within budget• Recap the three locations under discussion tonight• Review criteria for discussion<ul style="list-style-type: none">- Environmental- Impact on other users- Safety- Cost- Functionality- Anything else?• Gather feedback on the preferred location
7:30	Facilities <ul style="list-style-type: none">• Outline of project budget (earthworks, court, hoops etc)• Outline of possible amenity beyond the above and indicative costs• Gather feedback on the preferred/priority amenity
7:55	Wrap Up <ul style="list-style-type: none">• What will happen with the information?
8:00	END

-END-