

Information Sheet

Amendment of Community Land Management Plan Lot 1004 The Golden Way & The Grove Way, Golden Grove



We are inviting the community to have their say about the proposal to amend the Community Land Management Plan relating to Lot 1004 The Golden Way and The Grove Way, Golden Grove.

The proposal

In 2017 a land division was undertaken on the large parcel of vacant land on the corner of The Golden Way and The Grove Way, Golden Grove, which has created four new allotments (including Lot 903).

An application Development Plan Consent (Planning) was submitted in November 2018 to establish a medical centre and pharmacy with associated café, landscaping, car parking, signage and earthworks for Lot 903.

The proposed development on Lot 903 is identified as Category 2 under the Development Regulations 2008 and was circulated from 23 January 2019 and concluding 7 February 2019.

The application would impact on the Council owned screening reserve (Allotment 1004) with the land fronting the proposed development identified for easements applicable solely for the requirements of the development.

On 26 March 2019 Council resolved to proceed with community engagement to amend the Community Land Management Plan titled 'The Golden Way Plantation' located on the corner of The Grove Way and The Golden Way, Golden Grove.

The act of providing easement rights over community land requires a change to The Golden Way Plantation Community Land Management Plan (Portion of Allotment 1004 in Deposited Plan 115188 in Certificate of Title Volume 6187 Folio 464). As the development progresses the developer will provide and maintain a significant landscaping feature for the corner site.

Under the Local Government Act 1999, specifically section 198, Council is required to consult with the community about any amendments of Community Land Management Plan.

Have your say

Before we take any further steps with this proposal, we wish to hear from local residents, property owners and businesses about how this amendment may affect them.

To comment go to haveyoursay.cttg.sa.gov.au/lot1004 and complete the online submission form. We value your comments and would appreciate your feedback **by 5pm, Wednesday 15 May 2019**.

All feedback received on this proposal will be presented to Council for consideration before any further decisions are made.

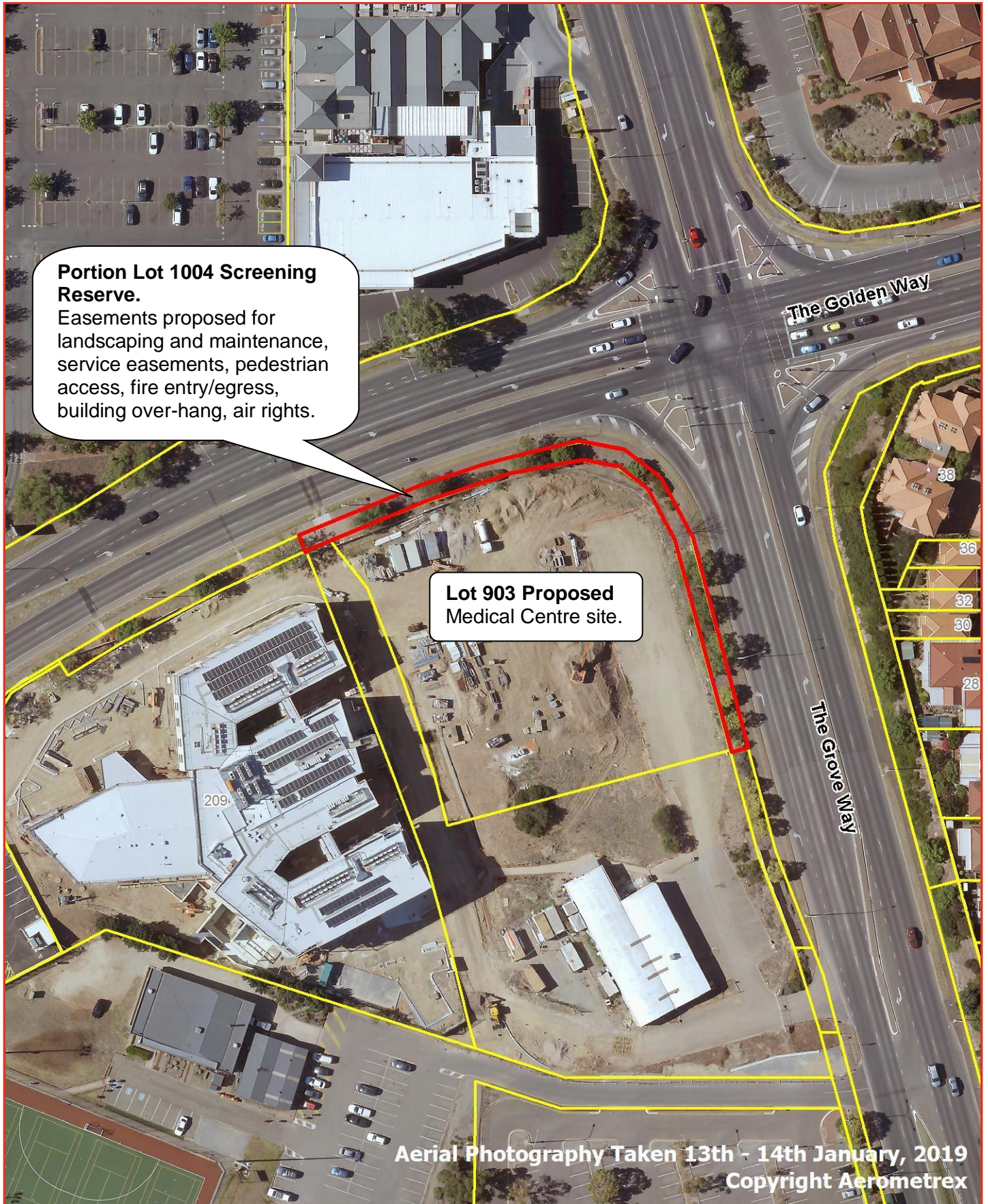
Those who provide feedback will be advised of the Council meeting date and further information once a decision is made.

Questions?

For more information please contact Martin Gehlert, Strategic Property Consultant during business hours on 8397 7444 or email martin.gehlert@cttg.sa.gov.au

Please turn over

Map of Lot 1004 The Golden Way Plantation



Contact Details

PO Box 571
Modbury SA 5092
571 Montague Road, Modbury
Tel (08) 8397 7444
Fax (08) 83977400
TTY (08) 8397 7340
www.teatreegully.sa.gov.au
Email cttg@cttg.sa.gov.au

Disclaimer

© Copyright 2005. All rights reserved. All works and information displayed are subject to Copyright. For reproduction or publication, written permission must be sought from the City of Tea Tree Gully. Although every effort has been made to ensure the accuracy of the information displayed, the City of Tea Tree Gully, its agents, officers and employees make no representations, either express or implied, that the information displayed is accurate or fit for any purpose and expressly disclaims all liability for loss or damage arising from reliance upon the information displayed.