

SIXTH AVENUE RESERVE PLAYSPACE

V05 23.03.17

Sixth Avenue Reserve upgrade has been designed to create an innovative play experience that reflects the aspirations and philosophies being developed by the City of Marion for play and open space amenity. The project will deliver a neighbourhood level open space destination, where individuals can play, socialise and recreate.

The playspace has been designed to reflect the adjacent Scouts Association and their connection to the reserve, with the Scout's emblem influencing the layout of pathway access and equipment.

Nature-based, creative and sensory play opportunities are provided through the water and sand play, with natural logs and a pebble lined swale reinforcing the natural aesthetic.

A diverse gradient of challenge is represented across the playspace, transitioning from the more challenging climbing equipment in the sand pit to the elevated rock slide mound and ropes through to the quieter play area with a basket swing and spinning dish.

Accessibility is provided to a wide range of play opportunities including the raised sand and water play and rubber softfall access to the basket swing and slide mound.

Quieter areas for exploration and socialisation have been provided through log seating circle and pathways to discover through natural vegetation. A raised lawn mound adjacent the play space allows for elevated views and informal gathering.

The existing shelter will be replaced with a new shelter added to the Allison Street entrance with a new picnic bench and barbecue. A drinking fountain is located centrally within the playspace.

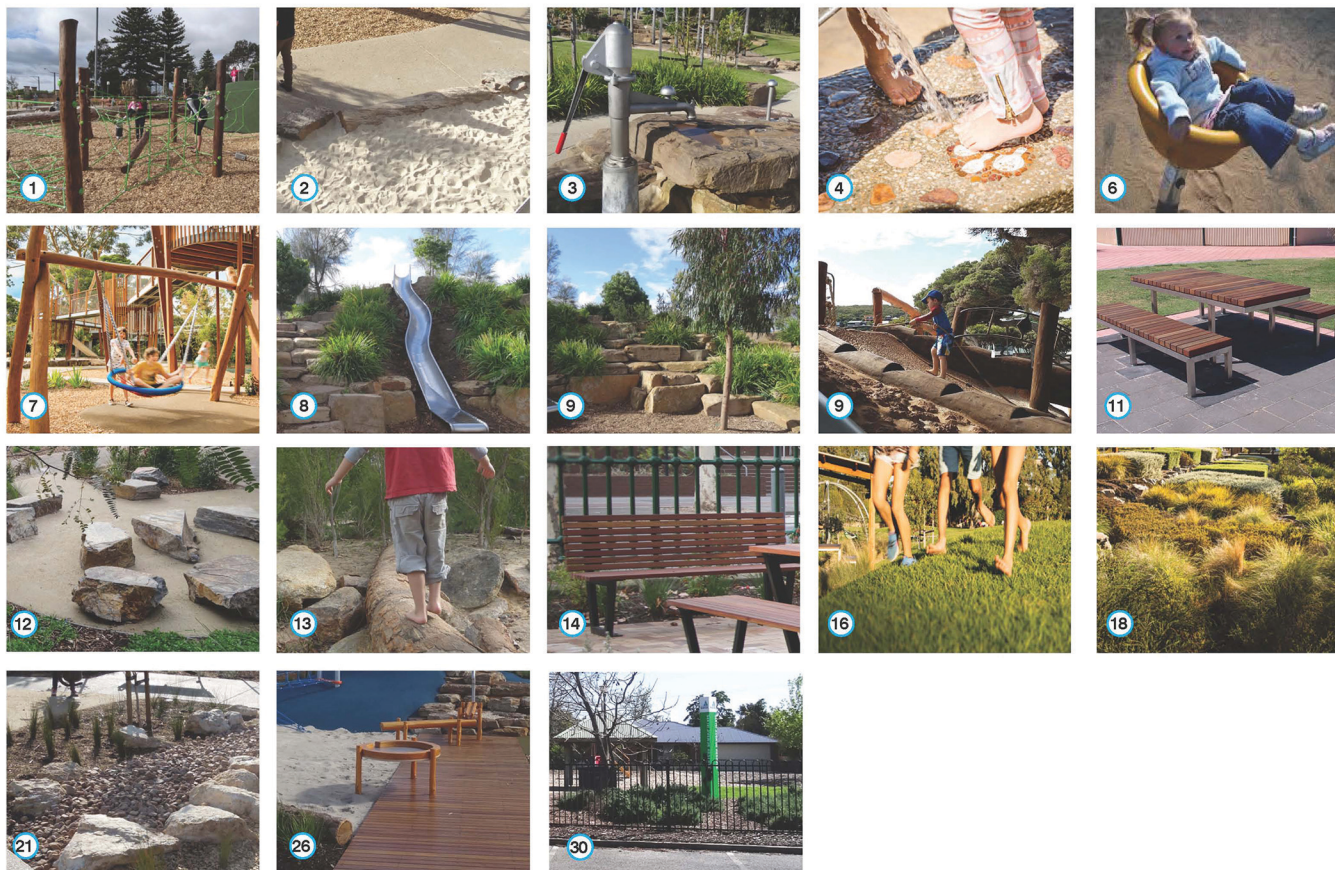
Buffer planting to Allison Street, the carpark and western boundary will assist in separating the playspace from the adjacent roadways, whilst the removal of the fence to Allison Street will increase connectivity to the local community. The disabled carpark adjacent the southern entrances assists with all abilities access to the reserve.

CONTEXT MAP



LEGEND

- | | | |
|--|---|---------------------------------|
| 1 Timber and rope climb | 13 Seating/balancing log | 23 Rubber softfall |
| 2 Sand pit with shade sail | 14 Bench seat | 24 Softfall Mulch |
| 3 Water pump onto rock | 15 Event/ Social Programming Lawn | 25 New shade trees |
| 4 Rock and pebble lined rill | 16 Turf mound | 26 Timber decking |
| 6 Spinning dish | 18 Buffer planting | 27 Existing light post retained |
| 7 Basket swing | 19 Remove existing fence | 29 Existing trees retained |
| 8 1.6m mound with 1.8m slide & timber platform | 20 Retain existing fence (remove northern gate) | 30 Existing sign relocated |
| 9 Rope and boulder climb to mound | 21 Pebble and plant lined swale | 31 Disabled carpark |
| 11 New shelter, picnic setting & BBQ | 22 Brushed concrete path | 32 Drinking fountain |
| 12 Seating rock | | 33 Existing path to be retained |



DESIGN INFLUENCE



North

Scale 1:300@A3

0m

10m