

EVENT IMPACT STATEMENT – AUSTRALIAN INTERNATIONAL 3 DAY EVENT

EVENT NAME	Australian International 3 Day Event (AI3DE)
EVENT ORGANISER	Adelaide Horse Trials Management Inc.
EVENT DATES	Thursday 13 to Sunday 16 November 2014
BUMP-IN/BUMP-OUT	Monday 22 September 2014 - set-up of cross country jumps begins Thursday 6 November 2014 - set-up of event infrastructure begins Friday 21 November 2014 – all event infrastructure removed Sunday 30 November 2014 – all cross country jumps removed
LOCATION	Victoria Park/Pakapakanthi , Ityamai-itpina (Park 15), Rymill Park/Murlawirrapurka. Refer to Attachment A1
EVENT DESCRIPTION	<p>The AI3DE has been held in the East Park Lands since 1997 and is a premier equestrian competition of international standard. It is the only Olympic Concours Complet International four star event held in the Southern Hemisphere and one of only six held across the world.</p> <p>Adelaide has been chosen to be the host city of this hallmark equestrian event. In 2011 the AI3DE became part of the HSBC FEI World Pro Tour Series.</p> <p>The competition involves three phases; dressage, cross country and show jumping. Horse and rider must successfully complete all disciplines.</p> <p>The main competition will take place in Victoria Park/Pakapakanthi. This will also be the location of additional activities including a trade village, VIP marquees, bars and catering, children’s entertainment and corporate hospitality.</p> <p>On Friday 14 November 2014 <i>Polo in the Park</i> will take place on the Premium Field and will run from 5:30pm to 10:00pm. This is a free public access event.</p> <p>The cross country element that takes place on the Saturday winds its way through Victoria Park/Pakapakanthi and Ityamai-itpina (Park 15) to Rymill Park/Murlawirrapurka for the lake jump where additional activities will include a small trade village, food and wine and corporate hospitality.</p> <p>Approximately 100 horses will be stabled in temporary stables at Victoria Park/Pakapakanthi which will also be the base for approximately 200 riders and grooms. Competitors will start arriving from Monday 10 November 2014 and will depart by Monday 17 November 2014. Riders and grooms are required to remain onsite to maintain the welfare and security of the horses.</p> <p>The event anticipates attracting 16,000 people over the four days. Opening hours are proposed from 8:00am to 6:00pm on Thursday, Saturday and Sunday, with closing on the Friday set for 10:00pm. A pre-sold ticketed function inside the main marquee in Victoria</p>

	<p>Park/Pakapakanthi will run from 7:00pm until midnight on Saturday 15 November 2014.</p>
EVENT INFRASTRUCTURE	<p>This year the riders and grooms camping area will be located in the area adjacent to Fullarton Road in the South East precinct of the park, refer to (Attachment A2). Horse trailers and trucks will be placed clear of the drip zones of significant trees. Toilets and shower blocks will also be located in this area.</p> <p>The installation of the cross country horse jumps is staggered across the three parks. The first delivery of jumps to the storage area in Victoria Park/Pakapakanthi will occur on 23 September 2014. The first jumps installed in Ityamai-itpina (Park 15) will occur on 14 October 2014, with the first jumps being installed in Rymill Park/Murlawirrapurka from 24 October 2014.</p> <p>Event organisers expect all jumps to be removed from all parks by Sunday 30 November 2014.</p> <p>Event infrastructure will include:</p> <ul style="list-style-type: none"> • Associated marquees and tented structures • Stage • Temporary bar facilities • Food Service outlets • Temporary kitchen facilities including cool rooms • Public address and audio visual equipment • Generators • Temporary toilets • Temporary fencing • Waste management infrastructure • Signage • Sponsor displays • Horse jumps • Horse transport vehicles
ROAD CLOSURES	<p>Wakefield and Bartels Roads are proposed to be closed from 5:00am to 10:00pm on Saturday 15 November 2014 to enable the cross country phase to take place. Approval for the road closures associated with the event will be sought through the CEO under the powers of delegated authority.</p> <p>As per the Road Traffic Act 1961, additional consultation will be undertaken with affected businesses and residents prior to the event.</p>
NOISE MITIGATION	<p>The event is required to abide by Adelaide City Council's Noise Mitigation Standard Operating Procedures. Due to the nature of the event, it is not anticipated that the event will produce excessive</p>



	<p>volume.</p> <p>The event will have commentary on each day of the event. The sound system for Victoria Park/Pakapakanthi will be positioned around the main arena and on Saturday in Rymill Park/Murlawirrapurka around the Rymill Park Lake.</p> <p>Live music will be played inside marquees on the Friday and Saturday night in Victoria Park/Pakapakanthi. Stages and speakers will be orientated away from the nearest noise sensitive areas.</p> <p>A letter box drop to residents two weeks prior will outline details of the event and query/complaint process.</p>
LIQUOR LICENSING	<p>A temporary liquor license will be sought from the Office of Consumer and Business Services by the event organiser.</p>
PARK LANDS MANAGEMENT	<p>The AI3DE will be responsible for minimising impacts on the Park Lands by following Adelaide City Council's Standard Operating Procedures for Events in the Park Lands. The event will be responsible for restoring the park to its original condition at the end of the event.</p> <p>The event requires perimeter fencing to ensure public safety and the safety of horses and riders. The schedule of installation for the fence lines has been planned to minimise public access and thoroughfare restrictions. The fencing plan can be found under Attachment A3 and the schedule is as follows:</p> <ul style="list-style-type: none"> • Stage 1 fencing is installed on Friday 31 October 2014 to allow for the installation of the event branded fence wrap in the area of the Heritage Grandstand and the establishment of the horse trucks, floats and riders' compound adjacent to Fullarton Road. Public access and thoroughfare remains unrestricted. • Stage 2 and 3 fencing installation begins on Friday 7 November 2014. Public access and thoroughfare remains unrestricted. • Stage 4 fencing installation will begin on Monday 10 November 2014 with no restrictions to public access or thoroughfare until 5:00am on Saturday 15 November 2014. • Friday 14 to Sunday 16 November 2014 fencing will fully enclose grandstand area (Attachment A1 - blue line). Pedestrian and cyclist access will remain open via the central east-west pathway or via the Clipsal track to Wakefield Street. • Saturday 15 November 2014 5:00am – 5:00pm full closure of entire Lease area to facilitate the safe operation of the cross-country event. <p>The event organisers are required to implement a pre-event signage plan that provides advice on the impending restrictions and alternative routes for the days when restrictions will apply. Clear signage directing people to the alternative routes will also be required on the days when restrictions are in place. The event organiser will be required to liaise with the ACC Events Consultant to confirm the location and number of signs installed. Locations will include key access points into the park and at intervals along the fence line.</p>

	<p>The AI3DE has committed to undertaking the following Park Lands protection measures:</p> <ul style="list-style-type: none"> • Vehicles to keep to roads and paths where possible and minimise vehicles movements on grassed areas • Training and practice areas for horses will be controlled by dedicated stewards • Sawdust will be used in the stable areas and will be removed post event • Bars and kitchens will use the surface protection system Pro Floor <p>Officials and volunteer parking (Attachment A2) in Victoria Park/Pakapakanthi will be in controlled areas only. All parking and vehicle management plans will require approval by Administration.</p>
ENVIRONMENTAL SUSTAINABILITY	<ul style="list-style-type: none"> • The three bin recycling system • All grey water will be removed from the site • The kitchen waste and fats will be removed from the site • Advertise and promote the use of public transport to the event in the program and on the website • The site will be cleaned throughout the day and at the conclusion of each day • Catering will be instructed to remove all waste from the sites • Recycled bottles from bars will be taken to the recycled centre.
SPONSORSHIP	<p>Council has endorsed \$65k from the sponsorship budget for the 2013 event and \$50K for the 2014 event in a two year sponsorship agreement.</p>
CAR PARKING	<p>No public parking is provided within the event site; however there is some parking provided in controlled non-grass areas of Victoria Park/Pakapakanthi for officials and volunteers. All parking and vehicle management plans will require approval by Administration and must include suitable procedures to manage the on-site parking to ensure only approved areas are used for the nominated periods and by approved event staff, volunteers and officials.</p> <p>The horse trucks and floats in the camping area (Attachment A2) will be located to the southern end of Victoria Park adjacent to Fullarton Rd. This new layout will provide for better safety and security for the event by moving the horses away from the main public event area.</p> <p>AI3DE have secured the use of the City of Burnside parking area adjacent to Fullarton Road for their VIP parking.</p> <p>Proposed parking areas for Market traders, stewards and volunteers are indicated on the site layout plan (Attachment A2). AI3DE will be required to provide approved parking management plans for these areas prior to issue of the event Lease.</p>
SOCIAL/CULTURAL IMPLICATIONS	<p>It is anticipated that the event will attract approximately 16,000 people in total.</p> <p>The event has a mixture of free and ticketed elements. The first day of the event on Thursday 13 November 2014 is a free entry day with all other days having an entry fee for the different stages. There will be a Friday evening twilight event with free entry for the public.</p>

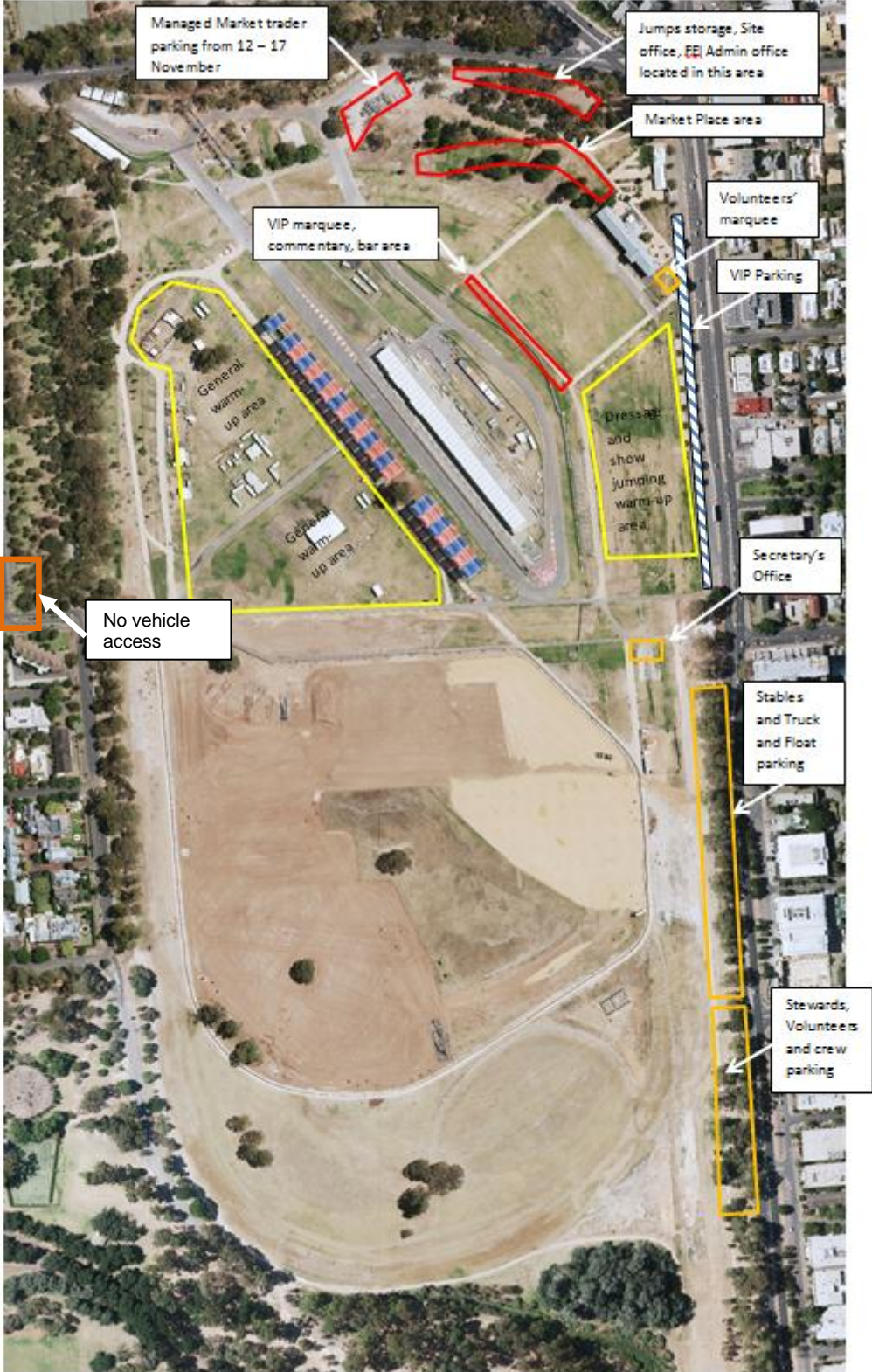
	Ticket prices vary from \$10 to \$195.
BUDGET/FINANCIAL IMPLICATIONS	Not applicable
POLICY IMPLICATIONS	<p>The Community Land Management Plan (CLMP) for Victoria Park/Pakapakanthi, supports the use of the park for sporting activities and specifically states:</p> <p><i>Provision of facilities for equestrian activities such as jumping, dressage, cross country and polo should be considered, as part of the multi-purpose facilities.</i></p>
PUBLIC CONSULTATION	<p>Public consultation on the Australian International 3 Day Event was undertaken from 18 June to 8 July 2014.</p> <p>The following categories have been used to summarise the feedback data:</p> <ul style="list-style-type: none"> • Aware: These are the people who visited the Your Say page. • Informed: These are the people who browsed through information on the event application. This figure consists of people looking at the FAQs, downloaded documents, clicked on external links, etc. • Engaged: There are the people who contributed feedback on the event by using the engagement tools. <p>There were a total of 21 unique visitors who visited the Australian International 3 Day Event consultation website page. Five of these users downloaded documents and one user provided feedback (included in Attachment A4)</p> <p>Summary of consultation:</p> <ul style="list-style-type: none"> • 21 people were aware of the project • 5 people were informed of the project • 2 people were engaged by providing feedback <p>1 submission was supportive of the event, but would like better signage and alternative cycling trails provided during the event.</p> <p>1 submission was supportive of event activities in the East Park Lands including The Garden of Unearthly Delights 2015, Gluttony 2015, Adelaide Fringe 2015 and Australian International 3 Day Event 2014.</p>

PROPOSED LEASE AREA – AUSTRALIAN INTERNATIONAL 3 DAY EVENT (BOUNDED IN RED)



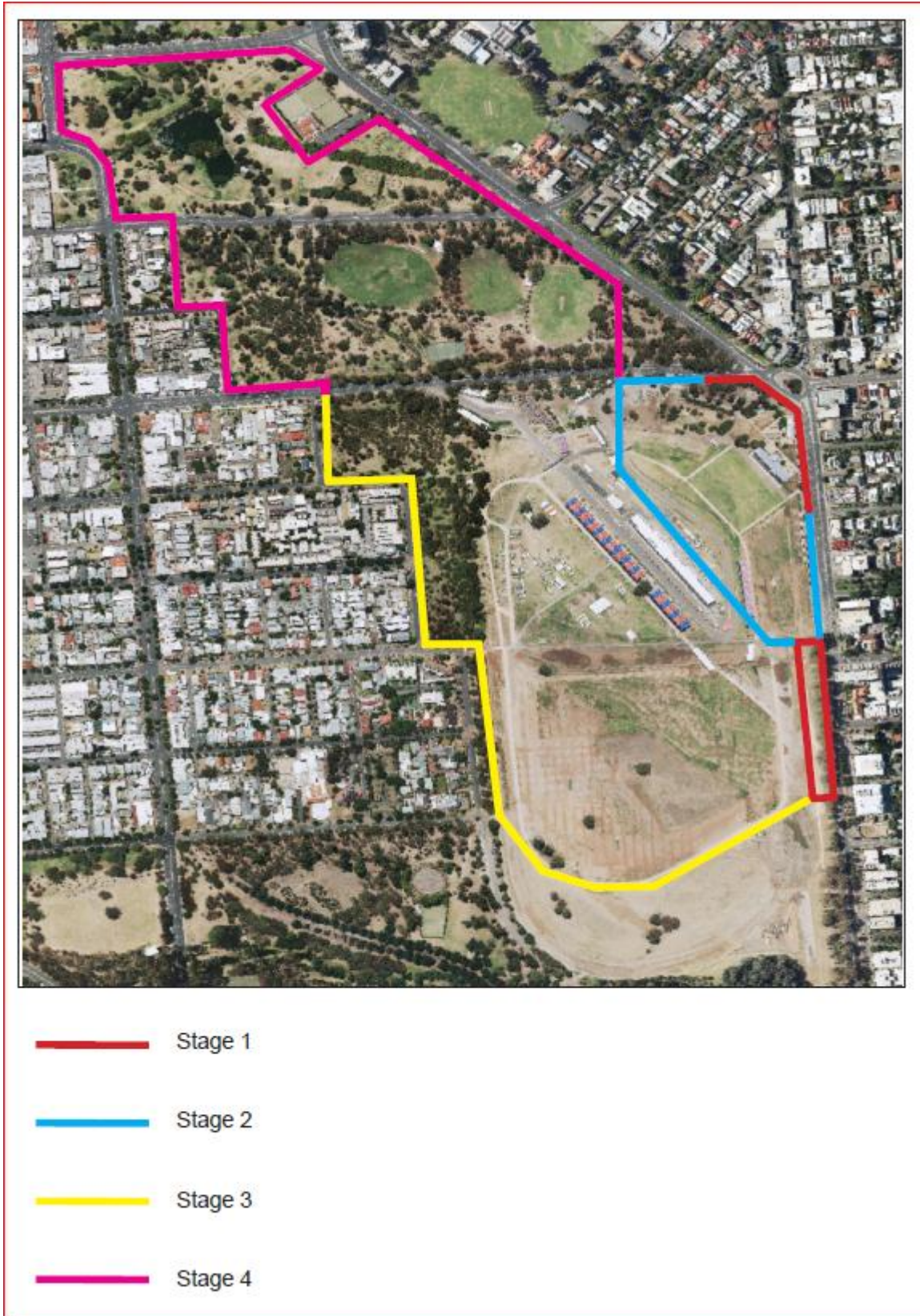
	<p>Indicates perimeter fence for cross country - Saturday 15 November 2014. Access retained for public on all other event days by the establishment of gaps in fence at pathway routes.</p>
	<p>Main event area, ticket access only and closed for public access from 5 am Friday 14 November to 5 pm Sunday 16 November 2014. Free access to public for Polo in the Park Friday 14 November 5:30 to 10 pm.</p>

PROPOSED SITE LAYOUT – VICTORIA PARK / PAKAPAKANTHI



Draft

FENCING BUILD SCHEDULE – AUSTRALIAN INTERNATIONAL 3 DAY EVENT



PUBLIC CONSULTATION SUBMISSIONS – AUSTRALIAN INTERNATIONAL 3 DAY EVENT

Note: The full name and address of the participant is available on request.

	Survey taken on	Name	Suburb	Submission
1	Wed 25 June at 25/06/2014 7:14:24	Ian	Parkside	<p>I support this event in its entirety, with one exception. I implore the council to work with NPSP Council and Burnside Council to provide safe, protected and signposted alternatives to the parklands trail and the commuter cycling routes during this event. During this event you cut through at least three high use cycling commuter routes that are used by commuter cyclists as well as families. Please also remember that the Parklands Trail is used by people so that they don't have to ride on the road.</p> <p>Perhaps it's time to think of installation of the outer parklands trail for skirting around these events.</p>
2	Fri 27 June 2014 at 5:43 PM	Paul	Adelaide	<p>Maras Group on behalf of Rundle East Company Pty Ltd supports these long term events in Rundle and Rymill Parks that delivers significant economic, social & cultural benefits to the wider east end precinct.</p> <p>As a group that promotes the precinct we would love to see that these events remain firmly in place for years to come and are not shifted to other parts of the city.</p>