

NZ & TAURANGA OWNED  
SUPPORT LOCAL



# GREENPARK SCHOOL

# Teacher Only Day Programme

**To Book:** go to [play-time.co.nz/before-after-school-care](http://play-time.co.nz/before-after-school-care)  
 Click GREENPARK then click "Teacher Only Day" (read T&C's before booking)  
 Click the FB icon to join our closed FB page.

**Why choose an accredited OSCAR programme?:** see why at [play-time.co.nz/about](http://play-time.co.nz/about)

**Need more information?** check out our Handbook and heaps more info at [play-time.co.nz](http://play-time.co.nz)



## TUESDAY 2 JUNE - TEACHER ONLY DAY

SCHOOL IS CLOSED - PLAY TIME IS OPEN\*

\*subject to minimum number of children booked to make the day fun and viable



# toasty TUESDAY

Join us today for a day of TOASTY crafts, games, discovery & kitchen activities!

Create a snowy owl craft, make warm waffles & discover fluffy winter slime!

Plus play Silent Snowball and heaps more!

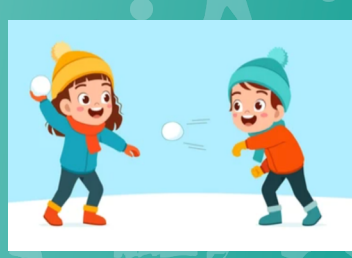
### Make



### create



### PLAY



### Discover



 Greenpark School In the School Hall 13 Lumsden Street, Greerton	 2 June <b>Cut-off time for bookings is 4pm the day before</b> <i>The system will tell you if the day is fully booked</i>	 Children aged 5-13y from all schools welcome	 <b>Long Day 7.30am - 6pm \$60</b> <b>Early Start Option 7am - 6pm \$70</b> <b>Half Day 8am - 1pm \$40</b> <small>early arrivals/late pickups are changed to relevant session &amp; invoiced accordingly</small>	 Bring LARGE packed morning tea & lunch. Refillable water bottle. Change of clothes (in case of accidents) Appropriate clothes, shoes. Please name all belongings. Please leave valuables/special items at home.	 Strictly by invoice Due Date (in advance) to confirm the booking & secure the space. Holiday Programme cancellation/switching days policy: 1 week notice - includes last minute bookings. Cancellations/edits to be made by the Account Holder in Enrolmy - admin/staff do not edit bookings.	<b>WINZ OSCAR SUBSIDY?</b> WINZ OSCAR Subsidies may be available to eligible families (up to 100% of fees) - More info at <a href="http://play-time.co.nz/winzsubsidyinfo">play-time.co.nz/winzsubsidyinfo</a> If winz has confirmed subsidy, then parent portion is due before attending. If winz has not processed subsidy, the invoice is to be paid in full before attending. Get booking & forms in ASAP to give winz time to process.	<b>GREENPARK #</b> 022 427 5784 this is not a general information number If your child is booked with us, join the closed FB group for important updates, lost property, pics of the day etc.
---	--	--	--	---	---	--	--