



BOOK NOW WITH  
**ENROLMY**

**Enrol now:**

[www.schoolsout.co.nz/palmy](http://www.schoolsout.co.nz/palmy)

Programme Manager: Chris Gregory  
22 Ward Street  
Palmerston North  
Phone :021 256 7410  
Email : [palmy@schoolsout.co.nz](mailto:palmy@schoolsout.co.nz)

### Matariki Craft

**MON**  
**6**  
**JUL**

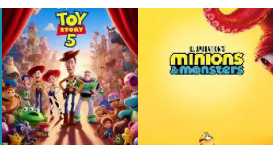


Join us for a day of Matariki-inspired crafts as we celebrate this special time of year through creativity and connection. We'll create themed art and decorations while learning about the meaning of Matariki and what it represents.

**Centre - \$58**

### Movie Choice Day

**TUE**  
**7**  
**JUL**



Join us for Movie Choice Day where you get to relax and enjoy a movie with friends.

You'll get to choose between Toy Story 5 or Minions and Monsters, so everyone can pick their favourite!

**Depart: 9.30am Return: 1.00pm**

**Trip Day - \$73**

### Fight Shop and Pizza

**WED**  
**8**  
**JUL**



Today we'll learn some fun fight-style skills in a safe, friendly environment at Fight Shop followed by a well-earned pizza lunch.

**Juniors: 9.15am - 10.45am**  
**Middles: 10.45am - 12.15 pm**  
**Seniors: 1.15pm - 2.45pm**

**Trip Day - \$73**

### Cloud 9

**THU**  
**9**  
**JUL**



Let's head to Cloud 9 where we'll jump, bounce and challenge ourselves across awesome trampolines and activity zones!

**Bring your grip socks!**

**Depart: 9.30am Return: 12.00pm**

**Trip Day - \$73**

**FRI**  
**10**  
**APR**



**CLOSED**

### Chipmunks - Juniors Mini Golf - Seniors

**MON**  
**13**  
**JUL**



Today juniors will head off to Chipmunks for a fun-filled day of climbing, sliding and play.

**Bring your socks!**

Our seniors will enjoy a trip to mini golf, where they can test their skills and compete with friends.

**Depart: 9.15am Return: 12.00pm**

**Trip Day - \$73**

### Around the World

**TUE**  
**14**  
**JUL**



Join us for Around the World Day, where we'll explore different countries through fun team challenges and creative crafts inspired by cultures from across the globe.

**Lunch Provided.**

**Centre Day - \$58**

### Manawatu Gym Sports

**WED**  
**15**  
**JUL**



Join us for an action-packed Manawatu Gym Sports Day where we'll test our skills, strength, and coordination through fun gym-based activities and challenges.

**Bring socks!**

**Depart: 10.45am Return: 3.30pm**

**Trip Day - \$73**

### Red Star Dance and the School's Out Sundae Bar

**THU**  
**16**  
**JUL**



Let's head to Red Star Dance where we'll move, groove and learn some awesome new dance moves. After we'll head back to the centre to cool down and celebrate with our School's Out Sundae Bar!

**Depart: 9.15am Return: 12.15pm**

**Trip Day - \$73**

### PJ Party and Arcade

**FRI**  
**17**  
**JUL**



Let's test out our new dance moves at the School's Out PJ Party! The School's Out Arcade will also be open!

Then we'll wind down and relax with a great movie and popcorn - It's the perfect way to end the holidays!

**Centre Day - \$58**

**\*Where weather affects the programme, School's Out reserves the right to provide an alternative activity on the affected day/s. Should changes occur, communication will be sent out in advance with as much notice as possible.**

Childcare subsidies and sibling discounts available for eligible families.



**Work and Income**  
Te Hiranga Tangata



**MINISTRY OF SOCIAL DEVELOPMENT**  
TE MANATŪ WHAKAHATOA ORA



**Wight Family Foundation**

# Holiday Programme

## Terms, Conditions & Information

### PAYMENT

One week's fee is to be paid at time of enrolment to secure the booking. This is non-refundable if notice is less than 1 weeks' notice of non-attendance.

At time of booking you accept full responsibility for the payment of fees, irrespective of any arrangement with any third party, including Work and Income NZ (WINZ). You understand and accept that if any fee or charge remains unpaid beyond the time specified in the Fee Policy, your child's enrolment may be cancelled, and the outstanding debt passed onto a debt collection agency where you will be responsible for any costs incurred in this process. Interest may be charged on all overdue balances and any collection costs will be charged to your account.

### CHARGES & NOTICE PERIODS

We require one weeks' notice if you wish to cancel or change your child's booking. All bookings are locked into the Enrolmy online booking platform one week prior. If you receive a WINZ OSCAR Subsidy, you must contact the Programme Manager directly to make any changes to your booking. Booking changes will often require a Change in Circumstance Form completed by the Programme Manager and Caregiver before submitting to WINZ.

### ABSENCES

To ensure the best possible care of children, it is important that you contact the Programme Manager prior to the start of the day which your child is going to be absent. The normal fee will be charged. Please note, failure to notify us of any absence will incur an additional \$10 fee for the time spent confirming your child's safety and their whereabouts.

### LATE PICKUP FEE

The programme is not authorised to care for your child outside of operating hours. A penalty of \$25.00 per 15 minutes (or part thereof) will be charged if you fail to collect your child within the booked timeframe.

### WEATHER AFFECTED CHANGES

In the event of weather affecting the programme, School's Out reserves the right to provide an alternative activity on the affected day/s.

### WINZ SUBSIDIES

If you are eligible for the WINZ OSCAR Subsidy, it remains your responsibility to ensure your account is always paid in advance and to pay any part of your fees which are not covered by a subsidy, this is referred to as the 'Parent Portion'. If applying for WINZ OSCAR subsidy we request a minimum of 50% of the booked fee to secure your booking.

A WINZ OSCAR Subsidy Application Form is required to be lodged with WINZ prior to your child attending the programme upon initial enrolment.

A WINZ OSCAR Subsidy Review Form is required to be lodged prior to the expiry date of the current subsidy for current attending children.

A WINZ Oscar Subsidy Application or Declaration Form needs to be completed prior to each school holiday programme and each school term.

It is your responsibility to keep WINZ fully informed of any changes in circumstances or care arrangements.

To find out more information about WINZ OSCAR subsidies please ask your Programme Manager or contact WINZ 0800 559 009 or [www.workandincome.govt.nz/products/a-z-benefits/childcare-subsidy](http://www.workandincome.govt.nz/products/a-z-benefits/childcare-subsidy).

### SIBLING DISCOUNTS

Where a family is eligible for a sibling discount, the discount will be applied to the eldest child. All siblings, including the eldest child, must attend for the discount to apply.

### TERMS AND CONDITIONS OF ENROLMENT

You agree to abide by the rules of the School's Out programme as detailed in the Parent Information Guide.

Please note - enrolments/bookings may be revoked at any time due to unpaid fees or a breach of the behaviour expectations.

Also agreed:

Confirmation of all bookings is at the sole discretion of School's Out. Stand down periods imposed and/or exclusion from the programme is also at the sole discretion of School's Out.

### IMPORTANT REMINDERS

Completing a booking in Enrolmy will be recognised as parental consent for all the booked activities.

Staff make every attempt to minimise the amount of lost property. Please assist us by naming everything your child brings to the programme.

Some of our School's Out programmes cannot allow nuts or nut-based products in the centres due to child allergies. Please check with the Programme Manager prior to bringing any nuts or nut-based products into the centre.

Children are asked not to bring valuable items to the programme unless stipulated. School's Out will not be held responsible for lost or damaged items.

Food, water bottle, footwear are required for each day, as well as suitable clothing for each of the activities. This includes recommending rash shirts for all water activities.

Please take note of departure times for trips and any additional equipment required (swimwear, money, devices etc.).

Please do not send any unwell children to the programme as we do not have the facilities to care for them. If a child becomes unwell during the programme, parents will be called to collect their child. If we are on a trip it will be the parent's responsibility to collect the child from that location.

Any medication required for your child must be handed to a School's Out senior staff member upon arrival and a Medication Form completed.

If a child's behaviour, or the level of supervision required for an individual child is such that it compromises the safety of the child, other children or staff, School's Out reserves the right to exclude that child from the programme.

A full copy of our Policies and Procedures is available upon request.