



# Tom Voyle Sports Club, Cambridge. Softball information sheet



Thank you for your interest in joining softball through the Cambridge Tom Voyle Sports club. We are very excited to potentially have more players registered for teams to represent Cambridge in the Hamilton Saturday competitions. This notice aims to inform you about a number of things including equipment, training and competition dates.

The TVP Sports Club have been rebuilding softball since 2016. During the 2018/19 season, we had teams in every year group all the way through to Major Men's and Women's. The club has a long history of softball with Kevin Herlihy and Tom Voyle being two NZ greats originating from Cambridge. Recent success includes ten Waikato Representative Age Group and three NZ International Softball Academy players.

## Training:

All training is held at the Tom Voyle Park. Times and days will be decided by each team's coach so will vary season to season. We aim to have as many training days at the same time to maximize resources and people so families can attend all at the same time. Players need all their equipment and suitable clothing for training. An extra snack is a good idea as well as water in a drink bottle to keep hydrated. A sunhat and sunscreen are also highly recommended.

## Equipment:

Basic items will be required in order to play, these include glove, shoes and shorts. If players do not have some of these items they will not be able to play on the day.

## Basic items include:

**Fielders Gloves** (Suitable for age and size of hands- advice can be given)

9.5 "inch to a maximum of 12.5" inch. Available from most sports stores or online at [www.dugout.co.nz](http://www.dugout.co.nz) (specialist Softball gear website)



## Shoes.

Either softball cleats (**no metal sprigs**) or touch rugby shoes (turf style – no metal)



## Socks.

Plain white, navy or black

## Cap.

Plain Navy with no markings

## Shorts.

Plain Navy (no markings or lettering)

**Pants** - College and Adult Grades = Grey Softball pants – softball style approximately \$40 each (specially ordered through Dugout or Just Softball)



**Other items we will supply:**

Batting helmets  
Uniform tops  
Team gear – bats and balls

**Optional items include:**

Batting gloves, sunglasses, skins (compression tops/shorts), black belt and sunblock.  
Gear Bag – any style or size big enough to keep equipment in.

**Fees:**

These will vary depending on what team you are in and how many teams you play for. Fees start at \$90 and are up to \$200 for the entire season.

Payable to the Tom Voyle club by the start of each season through internet banking.

Fees must be paid within the first two weeks of the season starting or playing will not be allowed to continue.

**Back account details are:**

Tom Voyle Park sports Club Inc  
02-0300-0015167-00  
Ref: Softball  
Code: Child's name (S.West)  
Particulars: Team (Y5/6)

**Season Dates:**

October through to March - term time only with a short break at Christmas time. Regional tournaments are usually during the break time.

**Registrations:**

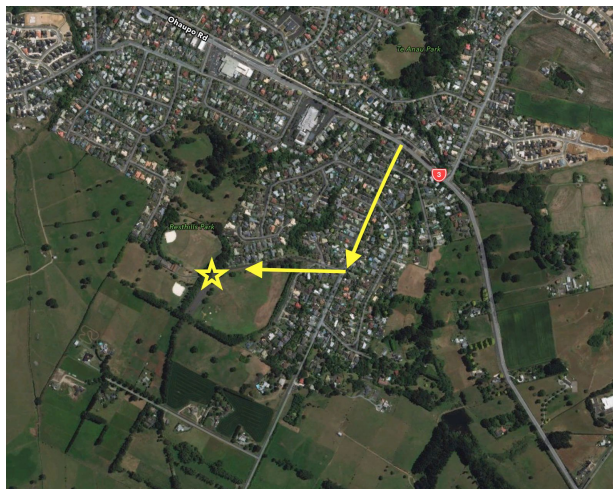
All registrations will be made through Enrolmy. For those without internet access, a device will be made accessible at the clubrooms for this purpose during musters.

Use this link to register: [enrolmy.com/tom-voyle-park-softball](https://enrolmy.com/tom-voyle-park-softball)

**Venue:**

Resthills Park, John Webb Dr, Glenview, Hamilton 3206

From State Highway 3 coming into Hamilton – Turn off Ohaupo Road left to Houchman's Road and then right onto John Webber Drive.



Games are played here every week on a Saturday

**Transport** will need to be arranged for your child to play on the day.

Teams cannot have more than 12 players on the day but we can have up to 15 players in the team to help cover if anyone is away or sick. Trials may be needed if team numbers exceed 15.

**Behaviour and Code of conduct:**

All players are expected to adhere to the Tom Voyle Sports Club Code of conduct behaviour expectations at all times. Players are part of a team and it is important to behave in a manner that provides team players with support and positive feedback not just during the game but at training also.

**OTHER MATTERS**

**What if we don't have enough players to make a team?**

If a school cannot form a team of their own due to lack of numbers then the club will seek ways to provide a team made up of students from other schools.

**Who will be the coach and manager?**

We are always looking for parents and teachers to help support us. You do not need to know anything as we will help provide you with materials that will give you some basics. On the day of competitions, we have found that most teams in the Hamilton competition are very helpful if you let them know you need help. There are lots of resources online that we will give you to make this easy and fun.

If you can help, we would really appreciate it.

**Facebook pages:**

Page "TVP Softball"

Public Page

Separate groups within this page have been set up to aid communication for teams

Waikato Softball Association

Public Group

**Website:**

Waikato Softball Association – for all details about competitions and resources.

Please feel free to contact Wayne or me if you have any further questions about playing this year.

Sunny West – 022 6190018 [sunny.w@leamington.school.nz](mailto:sunny.w@leamington.school.nz)

Wayne West – 022 6190017 [waynesunny.west@gmail.com](mailto:waynesunny.west@gmail.com)