

IRONMAN 4X4

GVM UPGRADE SOLUTIONS

AUSTRALIAN CERTIFIED SUSPENSION UPGRADE KITS



GVM
UPGRADE





GVM

UPGRADE



Ironman 4x4 Testing Procedures

On and off road testing and certification

The usable payload of many 4x4 vehicles today is minimal. Additional basic optional equipment along with two or three adult occupants will bring the vehicle close to its legal maximum weight (GVM) in many cases. Add long range fuel tanks, bull bars, winches, side steps, roof racks, recovery gear and a payload of camping equipment or an industrial type custom body and the vehicle will ultimately exceed the Original Equipment allowable Gross Vehicle Mass.

Original Equipment suspension is designed for comfort above all other considerations, thus load carrying and performance can be compromised. Whereas, Ironman 4x4 GVM upgraded suspension systems come with matched components for the ultimate in performance, load carrying and handling.

Ironman 4x4 products are extensively tested in real world conditions, both in-house and by independent automotive engineers to ensure conformity and operator comfort.

Ironman 4x4 regularly maintains and reviews its own internal processes and procedures as part of our ISO 9001 Quality Management System certification.

Formal testing verifies product safety and performance through official certifications issued by independent testing agencies and Government departments, including The Department of Infrastructure, Transport, Regional Development and Communications, TÜV Nord and KBA.



Do You Need a GVM Upgrade?

How to Determine Load Within Your Vehicle

STEP 1



Load placed over the front half of the vehicle determines front axle load
Ensure total weight does not exceed manufacturer's axle load limit

**FRONT
AXLE RATING**

STEP 2



Load placed over the rear half of the vehicle determines rear axle load
Ensure total weight does not exceed manufacturer's axle load limit

**REAR
AXLE RATING**

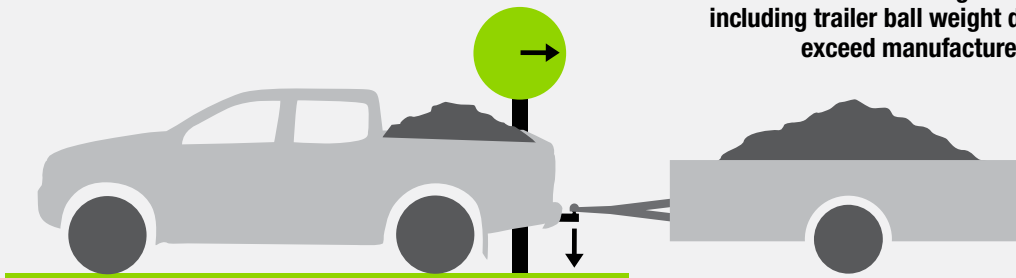
STEP 3



$1 + 2 =$ Total weight of vehicle
Ensure total weight does not exceed manufacturer's GVM (gross vehicle mass)

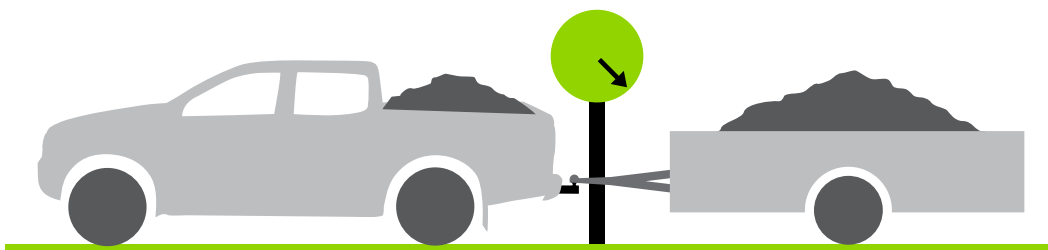
**GROSS VEHICLE
MASS (GVM)**

STEP 4



Ensure total weight of vehicle including trailer ball weight does not exceed manufacturer's GVM

STEP 5



Total weight of vehicle plus trailer weight = GCM (gross combined mass)
Ensure total weight of vehicle and trailer does not exceed manufacturer's GCM
Also ensure trailer does not exceed towing capacity

**GROSS
COMBINED
MASS (GCM)**

**TOWING
CAPACITY
(BRAKED)**

If you exceed manufacturer's rating on any of the above loads,

The figures in this brochure are a guide only. Always refer to the owner's manual for the load ratings specific to your vehicle.

	Ranger PX / PXII / PXIII	Colorado 2012 - 2016	Colorado 2016+	D-Max 2012+	Hilux 2005 - 2015	Hilux 2015+ WorkMate	Hilux 2015+ SR/SR5	Landcruiser 200 Series 2007+	Landcruiser 78/79 Series 2007+
OE	1480kg	1300kg	1450kg	1350kg	¹ 1240kg - 1340kg	1450kg	1450kg	² 1630kg 1700kg	1480kg
Ironman 4x4	1500kg	1550kg	1500kg	1500kg	1540kg	1510kg	1510kg	1800kg	1550kg

¹ Front Axle updated 4 times ² Front Axle upgraded January 2012

	Ranger PX / PXII / PXIII	Colorado 2012 - 2016	Colorado 2016+	D-Max 2012+	Hilux 2005 - 2015	Hilux 2015+ WorkMate	Hilux 2015+ SR/SR5	Landcruiser 200 Series 2007+	Landcruiser 78/79 Series 2007+
OE	1850kg	1680kg	1850kg	1870kg	³ 1520kg - 1600kg	1700kg	1700kg	1950kg	2300kg
Ironman 4x4	2000kg	1950kg	2000kg	2000kg	1810kg	2000kg	2000kg	2250kg	2800kg

³ Single Cab and Double Cab 1600kg, Extra Cab 1520kg

	Ranger PX / PXII / PXIII	Colorado 2012 - 2016	Colorado 2016+	D-Max 2012+	Hilux 2005 - 2015	Hilux 2015+ WorkMate	Hilux 2015+ SR/SR5	Landcruiser 200 Series 2007+	Landcruiser 78/79 Series 2007+
OE	3200kg	2900kg	3150kg	2950kg - 3050kg	2850kg	3000kg	3050kg	⁴ 3300kg 3350kg	⁵ 3300kg 3400kg
Ironman 4x4	3500kg	3500kg	3500kg	3500kg	3350kg	3510kg	3510kg	3580kg 4000kg	3900kg

⁴ GVM upgraded January 2012 ⁵ Single Cab 3400kg, Dual Cab / Troop Carrier 3300kg

	Ranger PX / PXII / PXIII	Colorado 2012 - 2016	Colorado 2016+	D-Max 2012+	Hilux 2005 - 2015	Hilux 2015+ WorkMate	Hilux 2015+ SR/SR5	Landcruiser 200 Series 2007+	Landcruiser 78/79 Series 2007+
OE	6000kg	5400kg petrol 5900kg diesel	6000kg	5950kg	⁶ 4600kg - 4750kg	5850kg	5850kg	6850kg	⁷ 6800kg 6900kg
Ironman 4x4	6000kg	5400kg petrol 5900kg diesel	6000kg	5950kg	4600kg 4750kg	5850kg	5850kg	6850kg	⁸ 6800kg 6900kg

⁶ 1GR-FE 4750kg, 2TR-FE 4600kg ⁷ and ⁸ Single Cab 6900kg, Dual Cab / Troop Carrier 6800kg

	Ranger PX / PXII / PXIII	Colorado 2012 - 2016	Colorado 2016+	D-Max 2012+	Hilux 2005 - 2015	Hilux 2015+ WorkMate	Hilux 2015+ SR/SR5	Landcruiser 200 Series 2007+	Landcruiser 78/79 Series 2007+
OE	3500kg	2500kg petrol 3000kg diesel	3500kg	3500kg	3200kg	3200kg	3500kg	3500kg 3550kg	3500kg
Ironman 4x4	3500kg	2500kg petrol 3000kg diesel	3500kg	3500kg	3200kg	3200kg	3500kg	3500kg 3550kg	3500kg

you need a GVM upgrade



GVM Upgrade Kit to suit Ford Ranger PX / PXII / PXIII

Australian Engineered and Approved



Designed and tested for contractors and tradesmen who carry tools and equipment that exceed original manufacturers or legal load limits, or fit a bull bar, winch and long range fuel tank and still have load carrying capacity. The Ironman 4x4 GVM Upgrade will assist in satisfying OH&S, insurance and road transport regulation requirements. Ironman 4x4 has conducted all required testing to ensure complete integration with all safety systems and requirements as well as compliance to Federal laws.

Pre Registration GVM Upgrade (Increases GVM to 3500kg)	Part No.	Price
Temporary Load - Foam Cell shock absorbers	FOR005BKFGVM	\$2963.52
Temporary Load - Foam Cell Pro shock absorbers	FOR005BKPGVM	\$3343.68
Permanent Load - Foam Cell shock absorbers	FOR005CKFGVM	\$3011.04
Permanent Load - Foam Cell Pro shock absorbers	FOR005CKPGVM	\$3391.20

Federal Approval CPA47511



Post Registration GVM Upgrade (Increases GVM to 3500kg)	Part No.	Price
Temporary Load - Foam Cell shock absorbers	FOR005BKFGVM1	\$2963.52
Temporary Load - Foam Cell Pro shock absorbers	FOR005BKPGVM1	\$3343.68
Permanent Load - Foam Cell shock absorbers	FOR005CKFGVM1	\$3011.04
Permanent Load - Foam Cell Pro shock absorbers	FOR005CKPGVM1	\$3391.20

Pre Registration GVM Upgrade (Increases GVM to 3500kg)	Part No.	Price
Temporary Load - Foam Cell shock absorbers	FOR001BKFGVM	\$2963.52
Temporary Load - Foam Cell Pro shock absorbers	FOR001BKPGVM	\$3343.68
Permanent Load - Foam Cell shock absorbers	FOR001CKFGVM	\$3011.04
Permanent Load - Foam Cell Pro shock absorbers	FOR001CKPGVM	\$3391.20

Federal Approval CPA47511



Post Registration GVM Upgrade (Increases GVM to 3500kg)	Part No.	Price
Temporary Load - Foam Cell shock absorbers	FOR001BKFGVM1	\$2963.52
Temporary Load - Foam Cell Pro shock absorbers	FOR001BKPGVM1	\$3343.68
Permanent Load - Foam Cell shock absorbers	FOR001CKFGVM1	\$3011.04
Permanent Load - Foam Cell Pro shock absorbers	FOR001CKPGVM1	\$3391.20

- Ford Ranger 2011+ PX, PXII and PXIII, Dual Cab, Single Cab and Extra Cab
- Plus engineering sign off (post reg only) • Subject to state compliance

Post Registration, State Approval

Vehicle must be inspected and approved by a state authorised automotive engineer for issue of modification plate

GVM upgrade includes:

- Shock absorbers
- U-bolts
- Strut shock absorbers
- Polyurethane spring bushes
- Coil springs
- Centre bearing spacer kit
- Leaf springs
- Greasable shackles and pins
- SSM Compliance plate (pre reg. only)
- Tyre placard



GVM Upgrade Kit to suit Holden Colorado RG

Australian Engineered and Approved



Designed and tested for contractors and tradesmen who carry tools and equipment that exceed original manufacturers or legal load limits, or fit a bull bar, winch and long range fuel tank and still have load carrying capacity. The Ironman 4x4 GVM Upgrade will assist in satisfying OH&S, insurance and road transport regulation requirements. Ironman 4x4 has conducted all required testing to ensure complete integration with all safety systems and requirements as well as compliance to Federal laws.

Pre Registration GVM Upgrade (Increases GVM to 3500kg)	Part No.	Price
Temporary Load - Foam Cell shock absorbers	HOLD021CKF2GVM	\$3011.04
Temporary Load - Foam Cell Pro shock absorbers	HOLD021CKP2GVM	\$3391.20
Permanent Load - Foam Cell shock absorbers	HOLD021DKF2GVM	\$3011.04
Permanent Load - Foam Cell Pro shock absorbers	HOLD021DKP2GVM	\$3391.20

Federal Approval CPA50676



up to 400kg more payload

Post Registration GVM Upgrade (Increases GVM to 3500kg)	Part No.	Price
Temporary Load - Foam Cell shock absorbers	HOLD021CKF2GVM1	\$3011.04
Temporary Load - Foam Cell Pro shock absorbers	HOLD021CKP2GVM1	\$3391.20
Permanent Load - Foam Cell shock absorbers	HOLD021DKF2GVM1	\$3011.04
Permanent Load - Foam Cell Pro shock absorbers	HOLD021DKP2GVM1	\$3391.20

Post Registration GVM Upgrade (Increases GVM to 3500kg)	Part No.	Price
Temporary Load - Foam Cell shock absorbers	HOLD021CKFGVM1	\$3011.04
Temporary Load - Foam Cell Pro shock absorbers	HOLD021CKPGVM1	\$3391.20
Permanent Load - Foam Cell shock absorbers	HOLD021DKFGVM1	\$3011.04
Permanent Load - Foam Cell Pro shock absorbers	HOLD021DKPGVM1	\$3391.20

- Holden Colorado RG 2012+, Dual Cab, Single Cab and Extra Cab
- Plus engineering sign off (post reg only) • Subject to state compliance

Post Registration, State Approval

Vehicle must be inspected and approved by a state authorised automotive engineer for issue of modification plate

GVM upgrade includes:

- Shock absorbers
- Strut shock absorbers
- Coil springs
- Leaf springs
- U-bolts
- Polyurethane spring bushes
- Greasable shackles and pins
- SSM Compliance plate (pre reg. only)
- Tyre placard



up to 600kg more payload



GVM UPGRADE

GVM Upgrade Kit to suit Isuzu D-Max

Australian Engineered and Approved



Designed and tested for contractors and tradesmen who carry tools and equipment that exceed original manufacturers or legal load limits, or fit a bull bar, winch and long range fuel tank and still have load carrying capacity. The Ironman 4x4 GVM Upgrade will assist in satisfying OH&S, insurance and road transport regulation requirements. Ironman 4x4 has conducted all required testing to ensure complete integration with all safety systems and requirements as well as compliance to Federal laws.

Pre Registration GVM Upgrade (Increases GVM to 3500kg)	Part No.	Price
Temporary Load - Foam Cell shock absorbers	HOLD021CKF1GVM	\$3011.04
Temporary Load - Foam Cell Pro shock absorbers	HOLD021CKP1GVM	\$3391.20
Permanent Load - Foam Cell shock absorbers	HOLD021DKF1GVM	\$3011.04
Permanent Load - Foam Cell Pro shock absorbers	HOLD021DKP1GVM	\$3391.20

Federal Approval CPA49748



up to 550kg more payload

Post Registration GVM Upgrade (Increases GVM to 3500kg)	Part No.	Price
Temporary Load - Foam Cell shock absorbers	HOLD021CKF1GVM1	\$3011.04
Temporary Load - Foam Cell Pro shock absorbers	HOLD021CKP1GVM1	\$3391.20
Permanent Load - Foam Cell shock absorbers	HOLD021DKF1GVM1	\$3011.04
Permanent Load - Foam Cell Pro shock absorbers	HOLD021DKP1GVM1	\$3391.20

- Isuzu D-Max 2012+, Dual Cab, Single Cab and Extra Cab • Plus engineering sign off (post reg only)
- Subject to state compliance

Post Registration, State Approval

Vehicle must be inspected and approved by a state authorised automotive engineer for issue of modification plate

GVM upgrade includes:

- Shock absorbers
- Strut shock absorbers
- Coil springs
- Leaf springs
- U-bolts
- Polyurethane spring bushes
- Greasable shackles and pins
- SSM Compliance plate (pre reg. only)
- Tyre placard



GVM UPGRADE

GVM Upgrade Kit to suit Toyota Hilux

Australian Engineered and Approved



Designed and tested for contractors and tradesmen who carry tools and equipment that exceed original manufacturers or legal load limits, or fit a bull bar, winch and long range fuel tank and still have load carrying capacity. The Ironman 4x4 GVM Upgrade will assist in satisfying OH&S, insurance and road transport regulation requirements. Ironman 4x4 has conducted all required testing to ensure complete integration with all safety systems and requirements as well as compliance to Federal laws.

Pre Registration GVM Upgrade (Increases GVM to 3510kg)	Part No.	Price
Temporary Load - Foam Cell shock absorbers	TOY077CKFGVM	\$3011.04
Temporary Load - Foam Cell Pro shock absorbers	TOY077CKPGVM	\$3510.00
Permanent Load - Foam Cell shock absorbers	TOY077DKFGVM	\$3011.04
Permanent Load - Foam Cell Pro shock absorbers	TOY077DKPGVM	\$3510.00

Federal Approval CPA48310

Post Registration GVM Upgrade (Increases GVM to 3510kg)	Part No.	Price
Temporary Load - Foam Cell shock absorbers	TOY077CKFGVM1	\$3011.04
Temporary Load - Foam Cell Pro shock absorbers	TOY077CKPGVM1	\$3510.00
Permanent Load - Foam Cell shock absorbers	TOY077DKFGVM1	\$3011.04
Permanent Load - Foam Cell Pro shock absorbers	TOY077DKPGVM1	\$3510.00

- Toyota Hilux 2015+, Dual Cab, Single Cab and Extra Cab
- Plus engineering sign off (post reg only)
- Subject to state compliance
- Upgrades vehicle to NB category

GVM upgrade includes:

- Shock absorbers
- Strut shock absorbers
- Coil springs
- Leaf springs
- U-bolts
- Polyurethane spring bushes
- Greasable shackles and pins
- SSM Compliance plate (pre reg. only)
- Tyre placard
- Cat. 6 side indicators



up to 510kg more payload

Post Registration GVM Upgrade (Increases GVM to 3350kg)	Part No.	Price
Temporary Load - Foam Cell shock absorbers	TOY057CKFGVM1	\$2854.44
Temporary Load - Foam Cell Pro shock absorbers	TOY057CKPGVM1	\$3317.76
Permanent Load - Foam Cell shock absorbers	TOY057DKFGVM1	\$2854.44
Permanent Load - Foam Cell Pro shock absorbers	TOY057DKPGVM1	\$3317.76

- Toyota Hilux 2005-2015, Dual Cab, Single Cab and Extra Cab
- Plus engineering sign off (post reg only)
- Subject to state compliance

Post Registration, State Approval

Vehicle must be inspected and approved by a state authorised automotive engineer for issue of modification plate

GVM upgrade includes:

- Shock absorbers
- Strut shock absorbers
- Coil springs
- Leaf springs
- U-bolts
- Polyurethane spring bushes
- Greasable shackles and pins
- Tyre placard



up to 500kg more payload



GVM Upgrade Kit to suit Toyota Landcruiser 200 Series

Australian Engineered and Approved

Designed and tested for contractors and tradesmen who carry tools and equipment that exceed original manufacturers or legal load limits, or fit a bull bar, winch and long range fuel tank and still have load carrying capacity. The Ironman 4x4 GVM Upgrade will assist in satisfying OH&S, insurance and road transport regulation requirements. Ironman 4x4 has conducted all required testing to ensure complete integration with all safety systems and requirements as well as compliance to Federal laws.

Post Registration GVM Upgrade (Increases GVM to 3580kg)	Part No.	Price
Temporary Load - Foam Cell Pro shock absorbers	TOY063BKPGVM1	\$2363.04

- Toyota Landcruiser 200 Series 2007+ • Plus engineering sign off (post reg only)
- Subject to state compliance

Post Registration, State Approval

Vehicle must be inspected and approved by a state authorised automotive engineer for issue of modification plate

GVM upgrade includes:

- Shock absorbers
- Coil springs
- Strut shock absorbers



up to 280kg more payload



Pre Registration GVM Upgrade (Increases GVM to 4000kg)	Part No.	Price
MC Compliance - Foam Cell Pro shock absorbers	TOY063CKPGVM-MC	\$2599.34
NA Compliance - Foam Cell Pro shock absorbers	TOY063CKPGVM-NB1	\$2764.34

Pre Registration GVM Upgrade (Increases GVM to 4000kg)	Part No.	Price
MC Compliance - Foam Cell Pro shock absorbers	TOY063CKPGVM1-MC	\$2599.34
NA Compliance - Foam Cell Pro shock absorbers	TOY063CKPGVM1-NB1	\$2764.34

Federal Approval CPA50517 MC category and CPA50503 NB1 category

- Toyota Landcruiser 200 Series 11/2007+ - MC and NA category vehicles
- Upgrades NA vehicles to NB1 category (Fitment of Cat6 side indicator lamps required)
- Plus engineering sign off (post reg only) • Subject to state compliance

Post Registration, State Approval

Vehicle must be inspected and approved by a state authorised automotive engineer for issue of modification plate

GVM upgrade includes:

- Shock absorbers
- Coil springs
- Tyre Placard
- SSM Compliance plate (pre reg. only)
- Cat6 Side indicator lamps (NA-NB1 vehicles only)



up to 700kg more payload



GVM Upgrade Kit to suit Toyota Landcruiser 70 Series

Australian Engineered and Approved



Designed and tested for contractors and tradesmen who carry tools and equipment that exceed original manufacturers or legal load limits, or fit a bull bar, winch and long range fuel tank and still have load carrying capacity. The Ironman 4x4 GVM Upgrade will assist in satisfying OH&S, insurance and road transport regulation requirements. Ironman 4x4 has conducted all required testing to ensure complete integration with all safety systems and requirements as well as compliance to Federal laws.

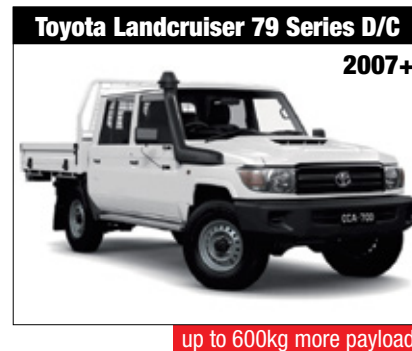
Pre Registration GVM Upgrade (Increases GVM to 3900kg)	Part No.	Price
Frequent Load - Foam Cell Pro shock absorbers	TOY047DKPGVM	\$3517.67
Permanent Load - Foam Cell Pro shock absorbers	TOY047EKPVM	\$3541.43
<i>Federal Approval CPA45466</i>		
Post Registration GVM Upgrade (Increases GVM to 3900kg)	Part No.	Price
Frequent Load - Foam Cell Pro shock absorbers	TOY047DKPGVM1	\$3517.67
Permanent Load - Foam Cell Pro shock absorbers	TOY047EKPVM1	\$3541.43



Pre Registration GVM Upgrade (Increases GVM to 3900kg)	Part No.	Price
Frequent Load - Foam Cell Pro shock absorbers	TOY047DKPGVM	\$3517.67
Permanent Load - Foam Cell Pro shock absorbers	TOY047EKPVM	\$3541.43
<i>Federal Approval CPA45466</i>		
Post Registration GVM Upgrade (Increases GVM to 3900kg)	Part No.	Price
Frequent Load - Foam Cell Pro shock absorbers	TOY047DKPGVM1	\$3517.67
Permanent Load - Foam Cell Pro shock absorbers	TOY047EKPVM1	\$3541.43



Pre Registration GVM Upgrade (Increases GVM to 3900kg)	Part No.	Price
Frequent Load - Foam Cell Pro shock absorbers	TOY047DKPGVM	\$3517.67
Permanent Load - Foam Cell Pro shock absorbers	TOY047EKPVM	\$3541.43
<i>Federal Approval CPA45466</i>		
Post Registration GVM Upgrade (Increases GVM to 3900kg)	Part No.	Price
Frequent Load - Foam Cell Pro shock absorbers	TOY047DKPGVM1	\$3517.67
Permanent Load - Foam Cell Pro shock absorbers	TOY047EKPVM1	\$3541.43



- Toyota Landcruiser 78/79, Troop Carrier, Single Cab, Dual Cab 2007+ • Plus engineering sign off (post reg only)
- Subject to state compliance

Post Registration, State Approval

Vehicle must be inspected and approved by a state authorised automotive engineer for issue of modification plate

GVM upgrade kit includes:

- Shock absorbers
- Coil springs
- Leaf springs
- U-bolts
- Polyurethane spring bushes
- Greasable shackles and pins
- SSM Compliance plate (pre reg. only)
- Tyre Placard
- Cat. 6 side indicators





Keep it legal, keep it safe