



PERFORMANCE
CONNECTIONS

Fittings Catalogue

VOLUME

7



NAPARTS

National Auto Parts Depot Pty Ltd
20 Production Drive, Campbellfield 3061
P: (03) 9357 6100 sales@naparts.com.au

Elbow - Male Tail Piece



Brass

BSP Common in AUS Applications

BME31618	3/16" Hose 1/8" Bsp
BME31614	3/16" Hose 1/4" Bsp
BME1418	1/4" Hose 1/8" Bsp
BME1414	1/4" Hose 1/4" Bsp
BME1438	1/4" Hose 3/8" Bsp
BME1412	1/4" Hose 1/2" Bsp
BME51618	5/16" Hose 1/8" Bsp
BME51614	5/16" Hose 1/4" Bsp
BME51638	5/16" Hose 3/8" Bsp
BME51612	5/16" Hose 1/2" Bsp
BME3818	3/8" Hose 1/8" Bsp
BME3814	3/8" Hose 1/4" Bsp
BME3838	3/8" Hose 3/8" Bsp
BME3812	3/8" Hose 1/2" Bsp
BME1214	1/2" Hose 1/4" Bsp
BME1238	1/2" Hose 3/8" Bsp
BME1212	1/2" Hose 1/2" Bsp
BME1234	1/2" Hose 3/4" Bsp
BME5814	5/8" Hose 1/4" Bsp
BME5838	5/8" Hose 3/8" Bsp
BME5812	5/8" Hose 1/2" Bsp
BME3412	3/4" Hose 1/2" Bsp
BME3434	3/4" Hose 3/4" Bsp

NPT Common in USA Applications

NPTE31618	3/16" Hose 1/8" NPT
NPTE1418	1/4" Hose 1/8" NPT
NPTE1414	1/4" Hose 1/4" NPT
NPTE51618	5/16" Hose 1/8" NPT
NPTE51614	5/16" Hose 1/4" NPT
NPTE51638	5/16" Hose 3/8" NPT
NPTE51612	5/16" Hose 1/2" NPT
NPTE3818	3/8" Hose 1/8" NPT
NPTE3814	3/8" Hose 1/4" NPT
NPTE3838	3/8" Hose 3/8" NPT
NPTE3812	3/8" Hose 1/2" NPT
NPTE1238	1/2" Hose 3/8" NPT
NPTE1212	1/2" Hose 1/2" NPT
NPTE5838	5/8" Hose 3/8" NPT
NPTE5812	5/8" Hose 1/2" NPT
NPTE3434	3/4" Hose 3/4" NPT

Straight - Male Tail Piece



Brass

BSP Common in AUS Applications

BMT1818	1/8" Hose 1/8" Bsp
BMT31618	3/16" Hose 1/8" Bsp
BMT31614	3/16" Hose 1/4" Bsp
BMT1418	1/4" Hose 1/8" Bsp
BMT1414	1/4" Hose 1/4" Bsp
BMT1438	1/4" Hose 3/8" Bsp
BMT1412	1/4" Hose 1/2" Bsp
BMT51618	5/16" Hose 1/8" Bsp
BMT51614	5/16" Hose 1/4" Bsp
BMT51638	5/16" Hose 3/8" Bsp
BMT51612	5/16" Hose 1/2" Bsp
BMT3818	3/8" Hose 1/8" Bsp
BMT3814	3/8" Hose 1/4" Bsp
BMT3838	3/8" Hose 3/8" Bsp
BMT3812	3/8" Hose 1/2" Bsp
BMT1218	1/2" Hose 1/8" Bsp
BMT1214	1/2" Hose 1/4" Bsp
BMT1238	1/2" Hose 3/8" Bsp
BMT1212	1/2" Hose 1/2" Bsp
BMT1234	1/2" Hose 3/4" Bsp
BMT5814	5/8" Hose 1/4" Bsp
BMT5838	5/8" Hose 3/8" Bsp
BMT5812	5/8" Hose 1/2" Bsp
BMT5834	5/8" Hose 3/4" Bsp
BMT3438	3/4" Hose 3/8" Bsp
BMT3412	3/4" Hose 1/2" Bsp
BMT3434	3/4" Hose 3/4" Bsp

Brass

NPT Common in AUS Applications

NPTS31618	3/16" Hose 1/8" Npt
NPTS1418	1/4" Hose 1/8" Npt
NPTS1414	1/4" Hose 1/4" Npt
NPTS1438	1/4" Hose 3/8" Npt
NPTS51618	5/16" Hose 1/8" Npt
NPTS51614	5/16" Hose 1/4" Npt
NPTS51612	5/16" Hose 1/2" Npt
NPTS51638	5/16" Hose 3/8" Npt
NPTS3818	3/8" Hose 1/8" Npt
NPTS3814	3/8" Hose 1/4" Npt
NPTS3838	3/8" Hose 3/8" Npt
NPTS3812	3/8" Hose 1/2" Npt
NPTS1214	1/2" Hose 1/4" Npt
NPTS1238	1/2" Hose 3/8" Npt
NPTS1212	1/2" Hose 1/2" Npt
NPTS1234	1/2" Hose 3/4" Npt
NPTS5838	5/8" Hose 3/8" Npt
NPTS5812	5/8" Hose 1/2" Npt
NPTS3412	3/4" Hose 1/2" Npt
NPTS3434	3/4" Hose 3/4" Npt

Black Straight Male Tails



98101	3/8" Male Hose Barb to 3/8" NPT Thread
98102	1/2" Male Hose Barb to 3/8" NPT Thread
15713	1/2" Male Hose Barb to 3/8" NPT Thread (Pack of 2)
98103	1/2" Male Hose Barb to 1/2" NPT Thread
15712	1/2" Male Hose Barb to 1/2" MPT Thread (Pack of 2)

Black Straight AN Male Tails



98204	3/8" Hose to -6AN Male
98205	1/2" Hose to -8AN Male

Brass Reducing Joiner



Brass

BA14516	1/4" to 5/16" (6.3-7.9mm)
BA1438	1/4" to 3/8" (6.3-9.5mm)
BA51638	5/16" to 3/8" (7.9-9.5mm)
BA51612	5/16" to 1/2" (7.9-12.7mm)
BA51658	5/16" to 5/8" (7.9-15.9mm)
BA3812	3/8" to 1/2" (9.5-12.7mm)
BA3858	3/8" to 5/8" (9.5-15.9mm)
BA1258	1/2" to 5/8" (12.7-15.9mm)
BA1234	1/2" to 3/4" (12.7-19.1mm)
BA5834	5/8" to 3/4" (15.9-19.1mm)

Plastic Reducing Joiner



Plastic

PR1612	5/8" to 1/2" (16 - 12mm)
PR1916	3/4" to 5/8" (19 - 16mm)

Tee Piece



Plastic

PT4	5/32" (4mm)
PT5	3/16" (5mm)
PT6	1/4" (6mm)
PT8	5/16" (8mm)
PT10	3/8" (10mm)
PT12	1/2" (12mm)
PT16	5/8" (16mm)
PT19	3/4" (19mm)

To order bag of 10, add -10 to Part No.

Plastic Joiner



Plastic

PJ4	5/32" (4mm)
PJ5	3/16" (5mm)
PJ6	1/4" (6mm)
PJ8	5/16" (8mm)
PJ10	3/8" (10mm)
PJ12	1/2" (12mm)
PJ16	5/8" (16mm)
PJ19	3/4" (19mm)

To order bag of 10, add -10 to Part No.

Joiner



Brass

BJ316	3/16" (4.8mm)
BJ14	1/4" (6.3mm)
BJ516	5/16" (7.9mm)
BJ38	3/8" (9.5mm)
BJ12	1/2" (12.7mm)
BJ58	5/8" (15.9mm)
BJ34	3/4" (19.1mm)

Tee Piece



Brass

BT316	3/16" (4.8mm)
BT14	1/4" (6.3mm)
BT516	5/16" (7.9mm)
BT38	3/8" (9.5mm)
BT12	1/2" (12.7mm)
BT58	5/8" (15.9mm)
BT34	3/4" (19.1mm)

Multi Fit Joiner



Plastic

1901	5/32" - 1/4" - 5/16" Snap Down (3.9-6.3-7.9mm)
------	--

Reducing Tee



Plastic

PRT54	3/16" to 5/32" (5 - 4mm)
PRT65	1/4" to 3/16" (6 - 5mm)
PRT86	5/16" to 1/4" (8 - 6mm)
PRT108	3/8" to 5/16" (10 - 8mm)
PRT1210	1/2" to 3/8" (12 - 10mm)
PRT1916	3/4" to 5/8" (19 - 16mm)

Reducing Tee



Brass

BRT133	5/8" - 5/8" to 3/8" (15.9- 9.5mm)
BRT131	5/8" - 5/8" to 1/2" (15.9- 12.7mm)
BRT135	3/4" x 3/4" to 1/4" (6.3mm)
BRT134	3/4" x 3/4" to 3/8" (9.5mm)
BRT132	3/4" - 3/4" to 5/8" (19.1- 15.9mm)

Tee Piece Multi Fit



Plastic

1900 | $\frac{5}{32}$ " - $\frac{1}{4}$ " - $\frac{3}{8}$ " Snap Down
(3.9 - 6.3 - 9.5mm)

Y Piece



Plastic

PY4	$\frac{5}{32}$ " (4mm)
PY6	$\frac{1}{4}$ " (6mm)
PY8	$\frac{5}{16}$ " (8mm)
PY10	$\frac{3}{8}$ " (10mm)
PY12	$\frac{1}{2}$ " (12mm)
PY16	$\frac{5}{8}$ " (16mm)

Elbow



Plastic

PE316	$\frac{3}{16}$ " (4.8mm)
PE14	$\frac{1}{4}$ " (6.3mm)
PE516	$\frac{5}{16}$ " (7.9mm)
PE38	$\frac{3}{8}$ " (9.5mm)
PE12	$\frac{1}{2}$ " (12.7mm)
PE58	$\frac{5}{8}$ " (15.9mm)
PE34	$\frac{3}{4}$ " (19.1mm)

Female Tee



Brass

P3501	$\frac{1}{8}$ " Bsp
P3502	$\frac{1}{4}$ " Bsp
P3503	$\frac{3}{8}$ " Bsp

Y Piece



Brass

BY316	$\frac{3}{16}$ " (4.8mm)
BY14	$\frac{1}{4}$ " (6.3mm)
BY516	$\frac{5}{16}$ " (7.9mm)
BY38	$\frac{3}{8}$ " (9.5mm)
BY12	$\frac{1}{2}$ " (12.7mm)
BY58	$\frac{5}{8}$ " (15.9mm)
BY34	$\frac{3}{4}$ " (19.1mm)

Elbow



Brass

BE316	$\frac{3}{16}$ " (4.8mm)
BE14	$\frac{1}{4}$ " (6.3mm)
BE516	$\frac{5}{16}$ " (7.9mm)
BE38	$\frac{3}{8}$ " (9.5mm)
BE12	$\frac{1}{2}$ " (12.7mm)
BE58	$\frac{5}{8}$ " (15.9mm)

Inline Male/ Female Tee



Brass

BFP516	$\frac{5}{16}$ " Hose $\frac{1}{8}$ " Npt
BFP38	$\frac{3}{8}$ " Hose $\frac{1}{8}$ " Npt
BFP12	$\frac{1}{2}$ " Hose $\frac{1}{8}$ " Npt

Female Elbow



Brass

P3401	$\frac{1}{8}$ " Bsp
P3402	$\frac{1}{4}$ " Bsp
P3403	$\frac{3}{8}$ " Bsp

Male & Female Elbow



Brass

P2501	$\frac{1}{8}$ " Bsp
P2503	$\frac{1}{4}$ " Bsp
P2505	$\frac{3}{8}$ " Bsp
P2507	$\frac{1}{2}$ " Bsp
P25ER02	Reducing $\frac{1}{4}$ " x $\frac{1}{8}$ " Bsp
98333	$\frac{3}{8}$ " Npt
98344	$\frac{1}{2}$ " Npt

Internal Hex Plug



Brass

BSP Thread

BHP18	1/8" Bsp
BHP14	1/4" Bsp
BHP38	3/8" Bsp
BHP12	1/2" Bsp
BHP34	3/4" Bsp
BHP1	1" Bsp

NPT Thread

NPTHP18	1/8" Npt
NPTHP14	1/4" Npt
NPTHP38	3/8" Npt
NPTHP12	1/2" Npt



Chrome Finish

6038	1/8" Npt Pack 4
6048	1/4" Npt Pack 4
6058	3/8" Npt Pack 4
6068	1/2" Npt Pack 4
60183	Kit 2 each 1/8", 1/4", 3/8" & 1/2" Npt

Reducing Bush Adaptor



Brass

Female | Male

TBR1818	1/8" Npt x 1/8" Bsp
TBR1814	1/8" Npt x 1/4" Npt
TBR1838	1/8" Npt x 3/8" Npt
TBR1812	1/8" Npt x 1/2" Npt
TBR1858	1/8" Npt x 5/8" Unf
TBR18M12	1/8" Npt x M12-1.5
TBR18M14	1/8" Npt x M14-1.5
TBR18M16	1/8" Npt x M16-1.5
TBR18M18	1/8" Npt x M18-1.5
TBRF	5/8" Unf x 3/8" Npt
TBRH	5/8" Unf x 1/2" Npt
TBRJ-14	5/8" Unf x M14-1.5
TBRJ-16	5/8" Unf x M16-1.5
TBRJ-18	5/8" Unf x M18-1.5
Q3516	Set of 3 Kit

Contains TBRF, TBRH & TBRJ-16

Hex Reducing Socket



Brass

P2901	1/4" x 1/8" Bsp
P2902	3/8" x 1/8" Bsp
P2903	3/8" x 1/4" Bsp
P2903B	1/2" x 1/8" Bsp
P2904	1/2" x 1/4" Bsp
P2905	1/2" x 3/8" Bsp

Hex Socket



Brass

P2601	1/8" Bsp
P2602	1/4" Bsp
P2603	3/8" Bsp
P2604	1/2" Bsp
P2605	3/4" Bsp

Reducing Bush



Brass

BRB1418	1/4" Male x 1/8" Female Bsp
BRB3818	3/8" Male x 1/8" Female Bsp
BRB3814	3/8" Male x 1/4" Female Bsp
BRB1218	1/2" Male x 1/8" Female Bsp
BRB1214	1/2" Male x 1/4" Female Bsp
BRB1238	1/2" Male x 3/8" Female Bsp
BRB3418	3/4" Male x 1/8" Female Bsp
BBB3414	3/4" Male x 1/4" Female Bsp
BBB3438	3/4" Male x 3/8" Female Bsp
BRB3412	3/4" Male x 1/2" Female Bsp

Metric to BSP

M14E02	M14-1.5 Male x 1/8" Female Bsp
M16E02	M16-1.5 Male x 1/8" Female Bsp
M18E04	M18-1.5 Male x 1/4" Female Bsp
M20E04	M20-1.5 Male x 1/4" Female Bsp

External Hex Plug



Brass

BSP Thread

BP18	1/8" Bsp
BP14	1/4" Bsp
BP38	3/8" Bsp
BP12	1/2" Bsp
BP34	3/4" Bsp
BP1	1" Bsp

NPT Thread

NPTP18	1/8" Npt
NPTP14	1/4" Npt
NPTP38	3/8" Npt
NPTP12	1/2" Npt
NPTP34	3/4" Npt

Reducing Adaptor



Brass

BRA1818	1/8" Female x 1/8" Male Bsp
BRA1418	1/4" Female x 1/8" Male Bsp
BRA1414	1/4" Female x 1/4" Male Bsp
BRA3818	3/8" Female x 1/8" Male Bsp
BRA3814	3/8" Female x 1/4" Male Bsp
BRA3838	3/8" Female x 3/8" Male Bsp
BRA1218	1/2" Female x 1/8" Male Bsp
BRA1214	1/2" Female x 1/4" Male Bsp
BRA1238	1/2" Female x 3/8" Male Bsp
BRA1212	1/2" Female x 1/2" Male Bsp

Olives Standard No. 1



Brass

P00102	1/8" Tube Pkt 10
P00103	3/16" Tube Pkt 10
P00104	1/4" Tube Pkt 10
P00105	5/16" Tube Pkt 10
P00106	3/8" Tube Pkt 5

Olives Universal No. 100



Brass

P102	1/8" Tube Pkt 10
P103	3/16" Tube Pkt 10
P104	1/4" Tube Pkt 10
P105	5/16" Tube Pkt 10
P106	3/8" Tube Pkt 5
P108	1/2" Tube Pkt 5

Compression Nut



Brass

P201	1/8" Tube 5/16"x24 Thread
P202	3/16" Tube 3/8"x24 Thread
P203	1/4" Tube 7/16"x24 Thread
P204	5/16" Tube 1/2"x24 Thread
P205	3/8" Tube 9/16"x24 Thread
P207	1/2" Tube 11/16"x24 Thread

Double Compression Union



Brass

P401	1/8" Tube
P402	3/16" Tube
P403	1/4" Tube
P404	5/16" Tube
P405	3/8" Tube
P406	1/2" Tube

Single Compression Union



Brass

P301	1/8" Tube x 1/8" Bsp
P302	3/16" Tube x 1/8" Bsp
P304	1/4" Tube x 1/8" Bsp
P305	1/4" Tube x 1/4" Bsp
P307	5/16" Tube x 1/8" Bsp
P308	5/16" Tube x 1/4" Bsp
P311	3/8" Tube x 1/8" Bsp
P312	3/8" Tube x 1/4" Bsp
P313	3/8" Tube x 3/8" Bsp
P316	1/2" Tube x 3/8" Bsp
P317	1/2" Tube x 1/2" Bsp

90° Compression Union



Brass

P502	3/16" Tube x 1/8" Bsp
P503	3/16" Tube x 1/4" Bsp
P504	1/4" Tube x 1/8" Bsp
P505	1/4" Tube x 1/4" Bsp
P507	5/16" Tube x 1/8" Bsp
P508	5/16" Tube x 1/4" Bsp
P511	3/8" Tube x 1/8" Bsp
P512	3/8" Tube x 1/4" Bsp
P516	1/2" Tube x 3/8" Bsp

Standard Flare Nut



Brass

P602	3/16" Tube 3/8"x24 Thread
P603	1/4" Tube 7/16"x20 Thread
P605	5/16" Tube 1/2"x20 Thread
P607	3/8" Tube 5/8"x18 Thread
P610	1/2" Tube 3/4"x16 Thread

Male Flare Union



Brass

P702	3/16" Tube x 1/8" Bsp
P706	1/4" Tube x 1/8" Bsp
P710	5/16" Tube x 1/8" Bsp
P711	5/16" Tube x 1/4" Bsp
P715	3/8" Tube x 1/4" Bsp
P721	1/2" Tube x 3/8" Bsp

Male Flare Elbow



Brass

P802	3/16" Tube x 1/8" Bsp 90°
P804	1/4" Tube x 1/8" Bsp 90°
P805	1/4" Tube x 1/4" Bsp 90°
P808	5/16" Tube x 1/8" Bsp 90°
P808-45	5/16" Tube x 1/8" Bsp 45°
P809-45	5/16" Tube x 1/4" Bsp 45°
P813	3/8" Tube x 1/4" Bsp 90°
P814	3/8" Tube x 3/8" Bsp 90°
P818	1/2" Tube x 3/8" Bsp 90°

Compression Tee



Brass

P1401	1/8" Tube
P1402	3/16" Tube
P1403	1/4" Tube
P1404	5/16" Tube
P1405	3/8" Tube

Inverted Flare Nut



Brass

P5803	1/4" Tube 7/16"x24 thread
P5804	5/16" Tube 1/2"x20 thread
P5805	3/8" Tube 5/8"x18 thread
P5806	1/2" Tube 3/4"x18 thread

Branch Hose Tee



MALE — Brass

MBHT31618	3/16" Hose 1/8 Bsp	MBHT3812	3/8" Hose 1/2 Bsp
MBHT1418	1/4" Hose 1/8 Bsp	MBHT1214	1/2" Hose 1/4 Bsp
MBHT1414	1/4" Hose 1/4 Bsp	MBHT1238	1/2" Hose 3/8 Bsp
MBHT51618	5/16" Hose 1/8 Bsp	MBHT1212	1/2" Hose 1/2 Bsp
MBHT51614	5/16" Hose 1/4 Bsp	MBHT5838	5/8" Hose 3/8 Bsp
MBHT3818	3/8" Hose 1/8 Bsp	MBHT3412	3/4" Hose 1/2 Bsp
MBHT3814	3/8" Hose 1/4 Bsp	MBHT3434	3/4" Hose 3/4 Bsp
MBHT3838	3/8" Hose 3/8 Bsp		



FEMALE — Brass

BR105	1/2" Male Hose 1/8" Npt Female
BR104	1/2" Male Hose 1/4" Npt Female
BR101	5/8" Male Hose 1/8" Npt Female
BR100	5/8" Male Hose 1/4" Npt Female
BR103	3/4" Male Hose 1/8" Npt Female
BR102	3/4" Male Hose 1/4" Npt Female

Male Inverted Flare Union



Brass

P6202	3/16" Tube x 1/8" Bsp
P6203	1/4" Tube x 1/8" Bsp
P6203B	1/4" Tube x 1/4" Bsp
P6204	5/16" Tube x 1/8" Bsp

Male Run Hose Tee



Brass

MRHT1238	1/2" Hose 3/8 Bsp
----------	-------------------

Hex Nipple



Brass

P2701	1/8" Bsp	P2703	3/8" Bsp
P2702	1/4" Bsp	P2704	1/2" Bsp

Female Flare Union



Brass

P1610	5/16" Tube x 3/8" Bsp
P1617	1/2" Tube x 1/2" Bsp

Inverted Tail



Brass

BIT51614	5/16" Hose 7/16-24 Unf (Suit 1/4 Tube)
BIT516516	5/16" Hose 1/2-20 Unf (Suit 5/16 Tube)
BIT51638	5/16" Hose 5/8-18 Unf (Suit 5/16 Tube)
BIT38516	3/8" Hose 1/2-20 Unf (Suit 5/16 Tube)
BIT3838	3/8" Hose 5/8-18 Unf (Suit 3/8 Tube)

Flare Union



Brass

P1703	1/4" Tube x 1/4" Bsp
P1704	5/16" Tube x 5/16" Bsp
P1705	3/8" Tube x 3/8" Bsp
P1706	1/2" Tube x 1/2" Bsp
P1716	1/2" Tube x 3/8" Bsp

Female Connector



Brass

P1001	1/8" Hose x 1/8" Bsp
P1002	3/16" Hose x 1/8" Bsp
P1004	1/4" Hose x 1/8" Bsp
P1005	1/4" Hose x 1/4" Bsp
P1008	5/16" Hose x 1/4" Bsp
P1012	3/8" Hose x 3/8" Bsp
98104	1/4" Hose to 3/8"Npt
98105	3/8" Hose to 3/8"Npt
98106	1/2" Hose to 1/2"Npt

Temperature Adaptor



Brass

B01N | Ford XY on 6 cyl

Temperature Adaptor



Brass

B02N | Ford XF on 6 cyl

Temperature Adaptor



Brass

B03N | Ford XE-XF 6 cyl

Vacuum Tree



Brass

B30N | Ford 250 Eng. Tree of 2

Vacuum Tree



Brass

B31N | Ford 250 Eng. Tree of 3

Vacuum Tree



Plastic

B31P | Ford 250 Eng. Tree of 3

Vacuum Tree



Brass

B36N | Ford Multi Point

Vacuum Tree



Brass

B37N | Ford Centre Point

Water Pump Tube



Brass

B16N | Ford Cleveland Straight Tube

Water Pump Tube



Steel

284T | Ford Straight Block
Straight Tube

Water Pump Tube



Brass

B17N | Ford Cleveland
Stepped Tube

Water Pump Tube



Steel

287T | Ford Cleveland
Stepped Tube

Water Outlet



Brass

B33N

| Holden V8 Manifold

Vacuum Tree



Brass

B18N

| Tree of 3 Commodore

Vacuum Tree



Brass

B19N

| Tree of 5 Commodore

Intake Manifold



Chrome Steel

5953

| Chevrolet 1/2" Npt to
5/8" Barb 1 3/4" long

Water Pump Fitting



Chrome Steel

Mini Ball Valve



BHT18

| 1/8" Bsp

BHT14

| 1/4" Bsp

BHT38

| 3/8" Bsp

BHT12

| 1/2" Bsp

Fuel Fitting Straight



43703

| 5/16" OD. Suit Holley
+ Stromberg Carbs

43704

| 3/8" OD. Suit Holley
1850, 3310 etc.

Fuel Fitting Elbow



43701

| 5/16" OD. Suit 2bbl Holley 7448
and Stromberg Carbs

43702

| 3/8" OD. Suit 4bbl Holley
600cfm-650cfm Carbs.

Brass Mini Spring Check Valves



Outlet



Inlet

- Stainless Steel Spring, NBR Rubber seat
- Nylon 6.6 Stem & Plunger
- Suitable for water, oil & gas
- Can be fitted in horizontal or vertical position

BRT18

| 1/8"

BRT14

| 1/4"

BRT38

| 3/8"

BRT12

| 1/2"

NON-RETURN VALVE

Holley Fuel Bowl Fittings



**Suit Holley Carb with Special Thread
Brass**

BHFF38

| 3/8" Hose

BHFF12

| 1/2" Hose

Extension Oil Switch



Brass

BOSE350

| Chevrolet Small Block 1/8" Bsp

Ryco Style Air Fitting



Brass

R201 | 1/4 BSP Male

Ryco Style Air Fitting



Brass

R200 | 1/4 BSP Female

Adaptors

310 Series



Brass

PJ31T3	3/16 Hose Tail
PJ31T4	1/4 Hose Tail
PJ31T5	5/16 Hose Tail
PJ31T6	3/8 Hose Tail
PJ31T8	1/2 Hose Tail

Nylon Tube



NT18	1/8" Nylon Tube Black
NT316	3/16" Nylon Tube Black
NT14	1/4" Nylon Tube Black

Male Coupling

310 Series



Brass

PJ310M2	1/8 Bsp
PJ310M4	1/4 Bsp
PJ310M6	3/8 Bsp
PJ310M8	1/2 Bsp

Female Coupling

310 Series



Brass

PJ310F4	1/4 Bsp
PJ310F6	3/8 Bsp
PJ310F8	1/2 Bsp

Coupling Hose Tail

310 Series



Brass

PJ310T4	1/4 Hose Tail
PJ310T5	5/16 Hose Tail
PJ310T6	3/8 Hose Tail
PJ310T8	1/2 Hose Tail

Male Adaptors

310 Series



Brass

PJ31M2	1/8 Bsp Male
PJ31M4	1/4 Bsp Male
PJ31M6	3/8 Bsp Male

Female Adaptors

310 Series



Brass

PJ31F2	1/8 Bsp Female
PJ31F4	1/4 Bsp Female
PJ31F6	3/8 Bsp Female

Ryco Style Air Fitting



Brass

R204	1/8 BSP Male Nipple
R202	1/4 BSP Male Nipple

Ryco Style Air Fitting



Brass

R203	1/4 BSP Female Nipple
------	-----------------------

Ryco Style Air Fitting



Brass

R205	1/4 Barb
R206	5/16 Barb
R206A	3/8 Barb

Transmission Cooler Line Fittings



13031	5/16" Transmission Line to 3/8" Hose Barb
13032	3/8" Transmission Line to 3/8" Hose Barb
13033	1/2" Transmission Line to 1/2" Hose Barb

Female Swivel Fittings



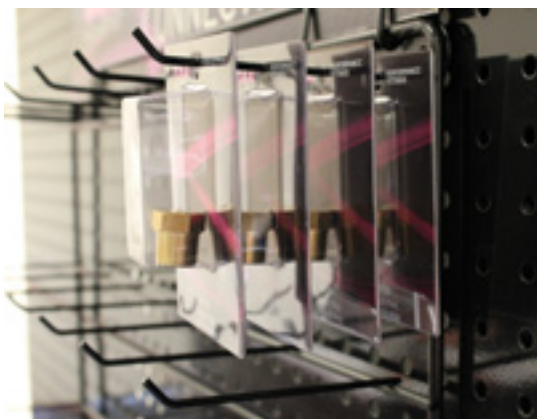
98200	3/8" Hose to -6AN Female
98201	3/8" Hose to -8AN Female
98202	1/2" Hose to -8AN Female
98203	1/2" Hose to -10AN Female

AN O-Ring Male Adaptor



69-450	-6AN x -10AN(7/8-14) O-Ring
69-451	-8AN x -10AN(7/8-14) O-Ring
69-452	-10AN x -10AN(7/8-14) O-Ring
69-453	-12AN x -10AN(7/8-14) O-Ring
59108	-8AN x 5/8"-18 O-Ring

Brass & Plastic Fittings Merchandiser's



Each wire hook easily accommodates up to 4 individual packages.

TFI's new brass merchandisers give you the flexibility to customise a range of fast moving fittings to optimise your sales and profit while increasing customer loyalty.

All PVC fittings are fuel rated and the rack can be mounted either by hooking straight into peg board or screwed to any solid surface.

BM2: Brass & Plastic Fittings Merchandiser's



119cm (H) X 57cm (W)

BM2

Contains 106 pieces.

Unit contains 124 pieces including the following



Male Tail Piece

1/8" Hose to 1/8" Bsp
3/16" Hose to 1/8" Bsp
1/4" Hose to 1/8" Bsp
1/4" Hose to 1/4" Bsp
5/16" Hose to 1/8" Bsp
5/16" Hose to 1/4" Bsp
5/16" Hose to 3/8" Bsp
3/8" Hose to 1/8" Bsp
3/8" Hose to 1/4" Bsp
3/8" Hose to 3/8" Bsp
1/2" Hose to 1/4" Bsp
1/2" Hose to 3/8" Bsp
5/8" Hose to 3/8" Bsp
5/8" Hose to 1/2" Bsp



Male Elbow Tail Piece

1/4" Hose to 1/8" Bsp
5/16" Hose to 1/8" Bsp
5/16" Hose to 1/4" Bsp
3/8" Hose to 1/8" Bsp
3/8" Hose to 1/4" Bsp
3/8" Hose to 3/8" Bsp
1/2" Hose to 3/8" Bsp
5/8" Hose to 3/8" Bsp
5/8" Hose to 1/2" Bsp



Brass Joiners

1/4", 5/16", 3/8", 1/2", 5/8"



Plastic Joiners

4mm, 5mm, 16mm



Brass Plugs

1/8", 1/4", 3/8", 1/2"



Brass Tees

1/4", 5/16", 3/8", 5/8"



Reducing Bush

1/2" x 1/4", 1/2" x 3/8", 1/4" x 1/8",
3/8" x 1/4", 3/8", x 1/8"



Plastic Tees

4mm, 5mm



Snap Down Joiner

5/32", 1/4", 3/8"



Brass Reducing Joiner

3/8" to 1/2", 5/16" to 3/8"



Brass Male Elbow

5/8"



Brass Hex Socket

1/4" Bsp



Brass Hex Nipple

1/8" Bsp, 1/4" Bsp

Option BM2A

Same as BM2 although replaces some small diameter plastic fittings with popular fuel fittings including:



90 Degree Fuel Fittings

5/16", 3/8"



Straight Fuel Fittings

5/16", 3/8"



Honey Fuel Fittings

3/8", 1/2"

BM8: Brass & Plastic Fittings Merchandiser's

Unit contains the following:



172cm (H) X 57cm (W)

BM8

Contains 160 pieces.



Brass Joiners
1/4", 5/16", 3/8", 5/8"
3/16", 1/2", 3/4"



Plastic Joiners
4mm, 5mm, 6mm,
8mm, 16mm, 19mm



Brass Tees
1/4", 5/16", 3/8", 5/8",
3/16", 1/2"



**Universal Snap
Down Joiner
& Tee Piece**
5/32", 1/4", 3/8"



Brass Plugs
1/8", 1/4", 3/8", 1/2"



Reducing Bush
1/2" X 1/8", 1/2" X 3/8",
1/4" X 1/8", 3/8" X 1/4",
3/8" X 1/8"



Plastic Tees
4mm, 5mm,
6mm, 8mm



Plastic Y Joiner
4mm



**Brass Reducing
Joiner**
1/2" to 5/8", 1/4" to 5/16"
3/8" to 1/2", 5/16" to
3/8", 5/8" to 3/4"



Plastic Male Elbow
5/8"



Male Tail Piece
1/8" Hose to 1/8" Bsp
3/16" Hose to 1/8" Bsp
1/4" Hose to 1/8" Bsp
1/4" Hose to 1/4" Bsp
5/16" Hose to 1/4" Bsp
5/16" Hose to 1/8" Bsp
5/16" Hose to 3/8" Bsp
3/8" Hose to 1/8" Bsp
3/8" Hose to 1/4" Bsp
3/8" Hose to 3/8" Bsp
1/2" Hose to 1/4" Bsp
1/2" Hose to 3/8" Bsp
5/8" Hose to 3/8" Bsp
5/8" Hose to 1/2" Bsp



Male Elbow Tail Piece
1/4" Hose to 1/8" Bsp
5/16" Hose to 1/8" Bsp
5/16" Hose to 1/4" Bsp
3/8" Hose to 1/4" Bsp
3/8" Hose to 1/8" Bsp
3/8" Hose to 3/8" Bsp
1/2" Hose to 3/8" Bsp
5/8" Hose to 3/8" Bsp
5/8" Hose to 1/2" Bsp



Brass Male Elbows
3/8", 5/8"



Brass Hex Socket
1/4" Bsp



Brass Hex Nipple
1/8" Bsp, 1/4" Bsp

BM9: Brass & Plastic Fittings Merchandiser's

Unit contains the following:



215cm (H) X 57cm (W)



Plastic Y Joiner
4mm, 6mm



Plastic Tee
4mm, 5mm, 6mm,
8mm, 16mm, 19mm



Plastic Joiner
4mm, 5mm, 16mm,
19mm



Brass Joiner
 $\frac{3}{16}$ ", $\frac{1}{4}$ ", $\frac{5}{16}$ ", $\frac{3}{8}$ ",
 $\frac{1}{2}$ ", $\frac{5}{8}$ ", $\frac{3}{4}$ "



Brass Reducing Joiner
 $\frac{1}{2}$ " to $\frac{5}{8}$ ", $\frac{1}{4}$ " to $\frac{5}{16}$ ",
 $\frac{3}{8}$ " x $\frac{1}{2}$ ", $\frac{5}{16}$ " x $\frac{3}{8}$ ",
 $\frac{5}{8}$ " to $\frac{3}{4}$ "



Brass Tees
 $\frac{3}{16}$ ", $\frac{1}{4}$ ", $\frac{5}{16}$ ", $\frac{3}{8}$ ", $\frac{5}{8}$ "



Brass Male Elbows
 $\frac{3}{8}$ ", $\frac{5}{8}$ "



Brass Plugs
 $\frac{1}{8}$ ", $\frac{1}{4}$ ", $\frac{3}{8}$ ", $\frac{1}{2}$ "



Temperature Gauge Adapter
Ford & Holden



Brass Female Tee
 $\frac{1}{4}$ "



Brass Hex Nipple
 $\frac{1}{8}$ ", $\frac{1}{4}$ "



Brass Hex Socket
 $\frac{1}{4}$ ", $\frac{1}{8}$ "



Female Connector Barbed
 $\frac{5}{16}$ " Hose x $\frac{1}{4}$ " Bsp



Male Tail Piece
 $\frac{3}{16}$ ", Hose to $\frac{1}{8}$ " Bsp
 $\frac{3}{16}$ ", Hose to $\frac{1}{4}$ " Bsp
 $\frac{1}{4}$ ", Hose to $\frac{1}{8}$ " Bsp
 $\frac{1}{4}$ ", Hose to $\frac{1}{4}$ " Bsp
 $\frac{5}{16}$ ", Hose to $\frac{1}{8}$ " Bsp
 $\frac{5}{16}$ ", Hose to $\frac{1}{4}$ " Bsp
 $\frac{5}{16}$ ", Hose to $\frac{3}{8}$ " Bsp
 $\frac{3}{8}$ ", Hose to $\frac{1}{8}$ " Bsp
 $\frac{3}{8}$ ", Hose to $\frac{1}{4}$ " Bsp
 $\frac{3}{8}$ ", Hose to $\frac{1}{2}$ " Bsp
 $\frac{3}{8}$ ", Hose to $\frac{3}{8}$ " Bsp
 $\frac{1}{2}$ ", Hose to $\frac{1}{8}$ " Bsp
 $\frac{1}{2}$ ", Hose to $\frac{1}{4}$ " Bsp
 $\frac{1}{2}$ ", Hose to $\frac{3}{8}$ " Bsp
 $\frac{1}{2}$ ", Hose to $\frac{1}{2}$ " Bsp
 $\frac{5}{8}$ ", Hose to $\frac{1}{4}$ " Bsp
 $\frac{5}{8}$ ", Hose to $\frac{3}{8}$ " Bsp
 $\frac{5}{8}$ ", Hose to $\frac{1}{2}$ " Bsp
 $\frac{3}{8}$ " Hose to $\frac{1}{8}$ " Bsp
 $\frac{3}{8}$ " Hose to $\frac{3}{8}$ " Npt
 $\frac{5}{16}$ " Hose to $\frac{3}{8}$ " Npt



Brass Male/Female Elbow
 $\frac{1}{8}$ ", $\frac{1}{4}$ "



Reducing Bush
 $\frac{1}{2}$ " x $\frac{3}{8}$ ", $\frac{1}{2}$ " x $\frac{1}{4}$ ",
 $\frac{1}{2}$ " x $\frac{1}{8}$ ", $\frac{1}{4}$ " x $\frac{1}{8}$ ",
 $\frac{3}{8}$ " x $\frac{1}{4}$ ", $\frac{3}{8}$ " x $\frac{1}{8}$ "



Inline Male/Female Tee
 $\frac{5}{16}$ ", Hose with $\frac{1}{8}$ " port,
 $\frac{3}{8}$ ", Hose with $\frac{1}{8}$ " port



Universal Snap Down Joiner & Tee Piece
 $\frac{5}{32}$ ", $\frac{1}{4}$ ", $\frac{3}{8}$ "



Male Elbow Tail Piece
 $\frac{3}{16}$ ", Hose to $\frac{1}{8}$ " Bsp
 $\frac{1}{4}$ ", Hose to $\frac{1}{8}$ " Bsp
 $\frac{5}{16}$ ", Hose to $\frac{1}{8}$ " Bsp
 $\frac{5}{16}$ ", Hose to $\frac{1}{4}$ " Bsp
 $\frac{5}{16}$ ", Hose to $\frac{3}{8}$ " Bsp
 $\frac{3}{8}$ ", Hose to $\frac{1}{8}$ " Bsp
 $\frac{3}{8}$ ", Hose to $\frac{1}{4}$ " Bsp
 $\frac{3}{8}$ ", Hose to $\frac{3}{8}$ " Bsp
 $\frac{1}{2}$ ", Hose to $\frac{1}{4}$ " Bsp
 $\frac{1}{2}$ ", Hose to $\frac{3}{8}$ " Bsp
 $\frac{5}{8}$ ", Hose to $\frac{3}{8}$ " Bsp
 $\frac{5}{8}$ ", Hose to $\frac{1}{2}$ " Bsp



Mini Ball Valve
 $\frac{1}{4}$ "



Reducing Tee
 $\frac{5}{8}$ " - $\frac{5}{8}$ " to $\frac{3}{8}$ "



Plastic Elbow
 $\frac{3}{4}$ " $\frac{5}{8}$ "

BM9

Contains 233 pieces.

Brass & Plastic Fittings Merchandiser's

Unit contains the following:



BM6

Contains 63 pieces.



Brass Female Tee
1/4", 1/8"



Brass Hex Nipple
1/8", 1/4"



Brass Hex Socket
1/4"



Reducing Bush
1/8" x 1/2"



Temperature Gauge Adaptor
Ford + Holden



Brass Male Female Elbow
1/8", 1/4"



Inline Male/Female Tee
5/16", Hose with 1/8" port,
3/8", Hose with 1/8" port



Male Elbow Tail Piece
3/16" Hose to 1/8" Bsp
5/16" Hose to 3/8" Bsp
1/2" Hose to 1/4" Bsp



Male Tail Piece
3/16" Hose to 1/4" Bsp
3/8" Hose to 1/2" Bsp
1/2" Hose to 1/2" Bsp
5/8" Hose to 1/4" Bsp



Female Connector Barbed
5/16" Hose x 1/4" Bsp

Brass & Plastic Fittings Merchandiser's

Unit contains the following:



BM5

Contains 54 pieces.



Plastic Y Joiner
4mm



Plastic Tee
6mm, 8mm, 16mm,
19mm



Plastic Joiner
6mm, 8mm, 19mm



Brass Joiner
3/16", 3/4"



Brass Reducing Joiner
1/2" to 5/8", 1/4" to 5/16",
5/8" to 3/4"



Plastic Male Elbow
5/8"



Brass Male Elbows
3/8"



Brass Tees
3/16", 1/2"



Multi Fit Tee Piece
5/32"-1/4"-3/8"

For Custom Designed Ranges

For custom designed ranges to suit your customers needs, please contact our friendly sales team to organise a consultation on

NAPARTS

(03) 9357 6100 or sales@naparts.com.au

TFI
Racing

Differences between BSP & NPT

WARNING: Although a BSP and NPT fitting may appear to be interchangeable (i.e. the threads will start and appear to fit) they are not. NEVER interchange the two fitting styles where pressure holding capability is required. The threads are not compatible and will not provide an adequate seal.

What is the difference between BSP & NPT?

BSP is an acronym for British Standard Pipe which is similar to National Pipe Taper (NPT) in the fact that the reference size of the fitting is not an actual diameter of the fitting or it's thread but it's trade size. Unlike hose which is measure by its inside diameter, or tube which is measured by its outside diameter, Pipe is measured by 'trade' size, so a 3/4 inch pipe has an OD of a little more than 1 inch and an ID of about 53/64.

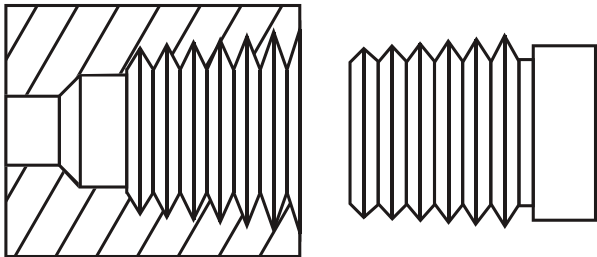
Common BSP thread diameters.

BSP Major Diameter			
Trade size	BSP Threads Per Inch	In.	mm
1/8	28	0.383	9.728
1/4	19	0.518	13.157
3/8	19	0.656	16.662
1/2	14	0.825	20.955
5/8	14	0.902	22.911
3/4	14	1.041	26.441
1	11	1.309	33.249

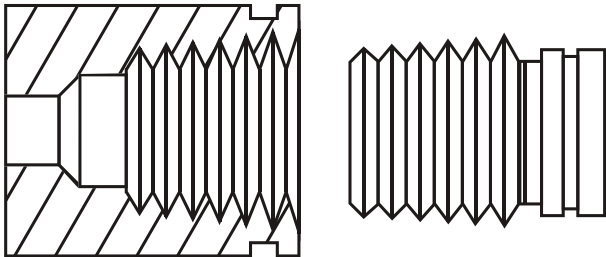
BSP has a 55 degree thread 'pitch' angle and has rounded peaks and valleys (similar to a Whitworth thread), whilst NPT fittings have a 60 degree thread 'pitch' angle with flat peaks and valleys. This difference in thread along with the number of threads per inch is the easiest ways to spot the differences between the two often confused fitting styles..

BSP vs. NPT Thread Comparison		
Trade size	BSP Threads Per Inch	NPT Threads Per Inch
1/8	28	27
1/4	19	18
3/8	19	18
1/2	14	18
5/8	14	14
3/4	14	14
1	11	11.5

NPT Connections



BSPT Connection





National Auto Parts Depot Pty Ltd
20 Production Drive
Campbellfield, Victoria 3061
Australia

Phone: (03) 9357 6100
Email: sales@naparts.com.au

www.naparts.com.au

BRACAT



9 323357 099154