

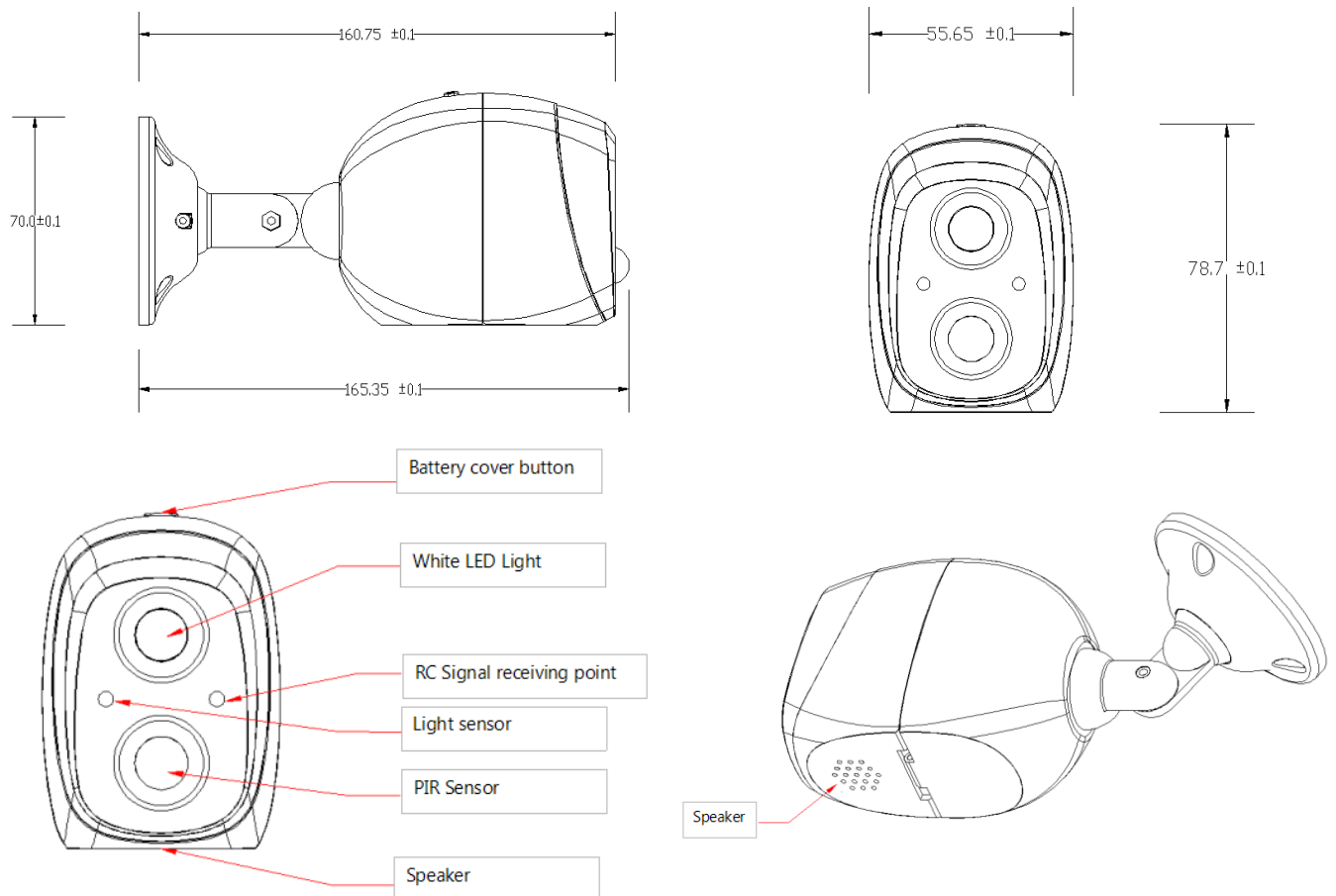
NEXTECH

PIR Motion Sensor LED light with Alarm

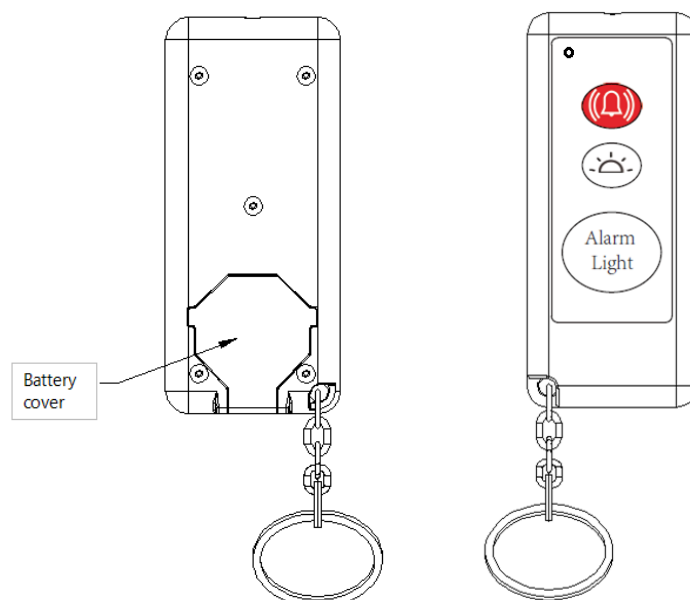
User Manual

Dimension:

A. Main body-Alarm and Light



B. Remote Controller



Basic Data:

1. Power source (Battery): 4 x 1.5V AA(main body); 1 x 3V CR2032(Remote Controller):
2. Detection range: 5m +/-1m.
3. Detection Angle: 120°.
4. Brightness of White LED light (1m distance testing): 80Lum. (Max). (Working 15 seconds long)
5. Alarm sound level: 120dB (Working 15 seconds long)
6. Remote Controller detection distance: 5m
7. Battery lifetime:
 - 7.1. Main body: 6 months around (It is related to the frequency of daily induction and the selected working mode)
 - 7.2. Remote Controller: 12 Months around.
8. Waterproof level: IP44.

Function / Operation.**A. Working Modes.**

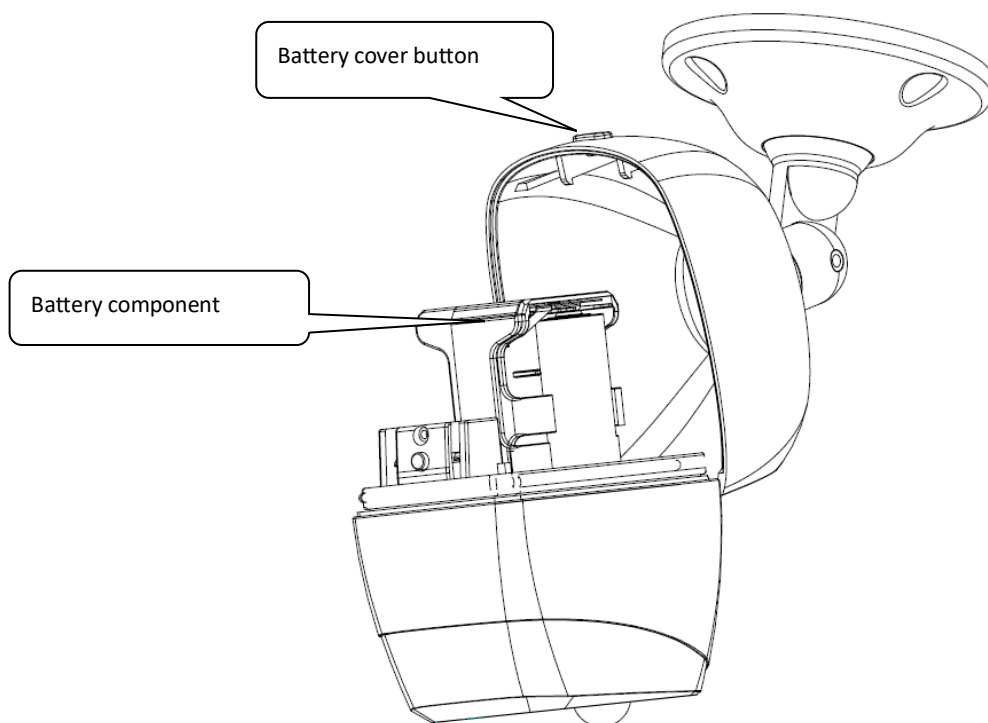
1. Alarm Mode: At night, when the PIR sensor detected human, the alarm was triggered and work 15 seconds immediately.
2. Light Mode; At night, when the PIR sensor detected human, the White LED light was triggered and work 15 seconds immediately.
3. Alarm + Light Mode; At night, when the PIR sensor detected human, the alarm and LED both were triggered and work 15 seconds immediately.

B. Remote Controller Operation:

1. Alarm Button: When press it, you can hear a sound “di”, enter to Alarm mode
2. Light Button: When press it, you can hear a sound “di”, enter to Light mode.
3. Alarm + Light Button: When press it, you can hear a sound “di”, enter to Alarm + Light mode

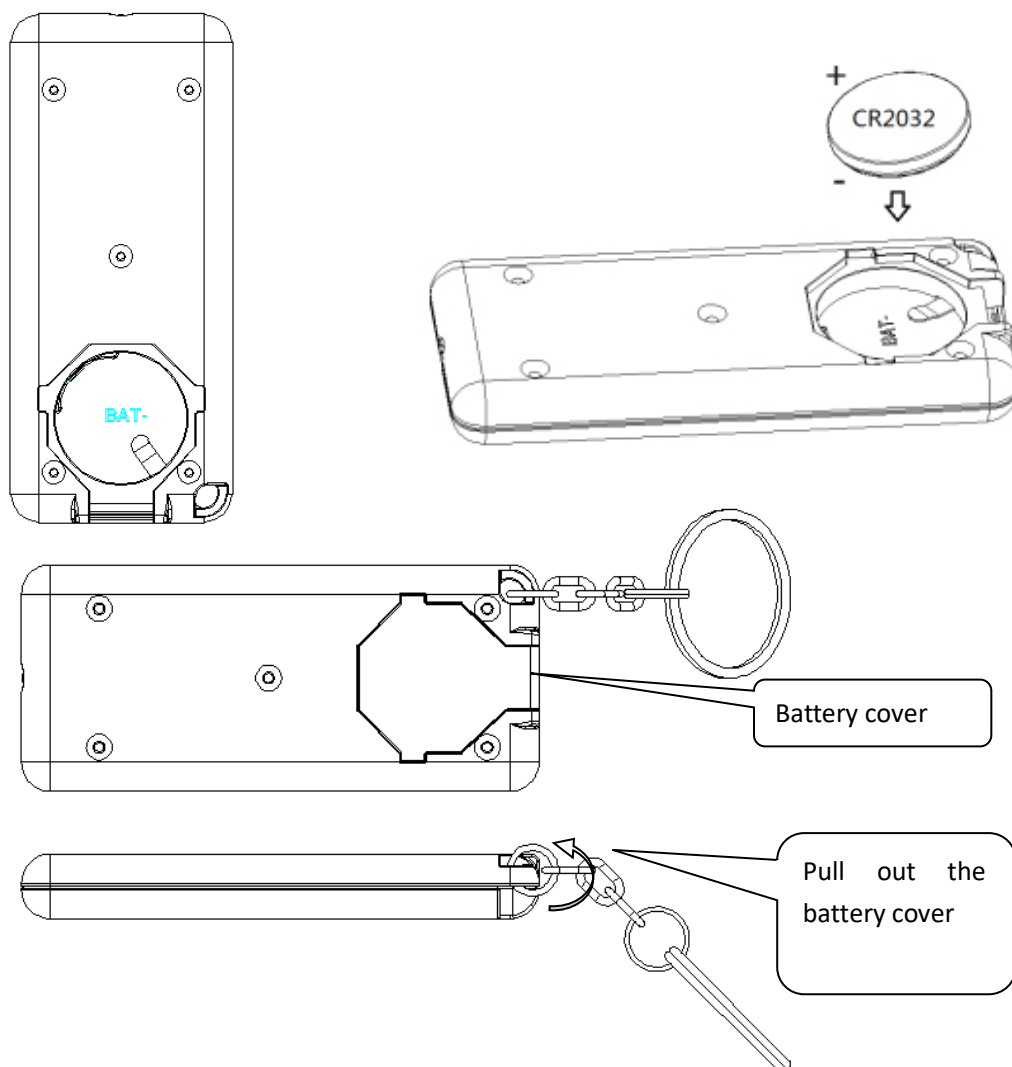
Battery Installation.**A. Main body**

1. Press the button on the back cover, and then put forward the front cover.
2. When you install the battery, please pay attention the symbol “+”, “-”.
3. After 4pcs batteries were installed, you can hear a sound “di”, it proofs that battery installed correctly.



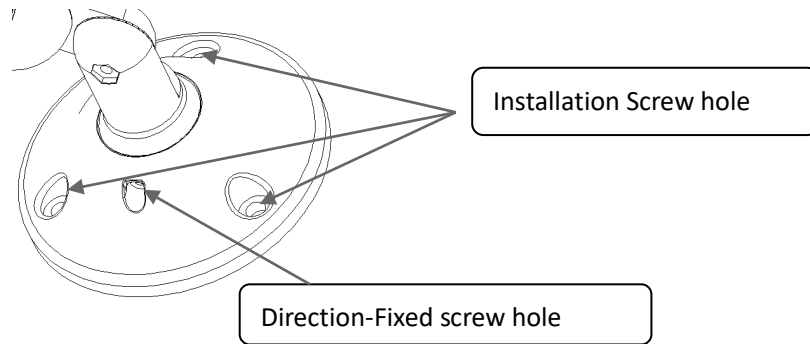
B. Remote Controller.

1. Pull out the battery cover on the backside, Install or uninstall the CR2032 battery diagonally.
2. After battery installation, please press any button to check the operation, if the LED was light on, it proof that installed correctly.

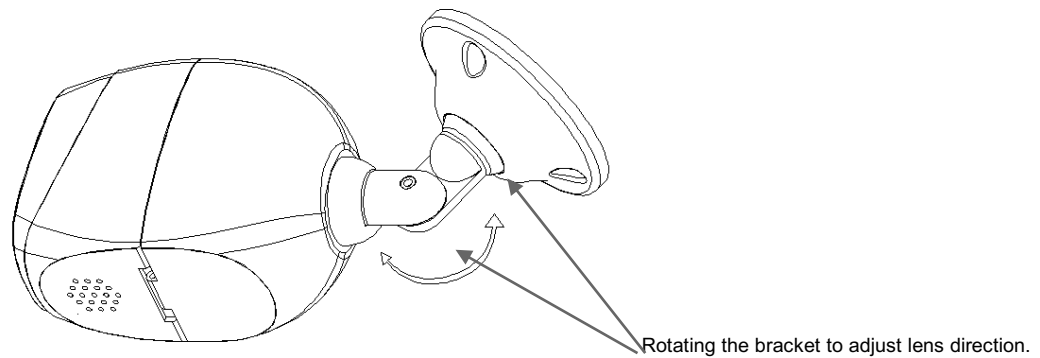


Bracket Installation:

1. Drill three holes on the wall as shown in the below photo. Then insert the rubber plug, align the holes in the bracket with the rubber plug, and lock it.



2. You can rotate the bracket to adjust lens direction. See below photo



Made in China