



720p Outdoor Wi-Fi IP Camera



User Manual



Motion
Detection



In-Built
Audio



microSD Card
Recording



Infrared
Night Vision



Weatherproof
Camera

Quick Guide:

1. Connect the mains power adaptor to a suitable 240VAC mains wall outlet. Plug the power cable into the DC power socket of the Wi-Fi camera and turn on.
2. Insert a microSD card (not included) into the microSD card slot located in the bottom compartment of the unit.
3. Download the app "NetSee" from Google Play or the Apple App store. Open the app once installed.

App Name: NetSee



4. Sign up to an account entering a suggested username and password.
5. Once you have signed in; press the add

camera button and follow the steps.

6. Select your available Wi-Fi home network and enter the correct password. Once selected then proceed to select your current time zone.

7. Ensure the volume is all the way up on your smartphone and place it next to the IP camera's microphone. Once your smartphone is next to the IP camera, press the sound wave button to start the signal.



8. Once successfully paired; you can now view the camera.

Box Contents:



1 x 720p Outdoor Wi-Fi IP Camera



1x 2m Power Extension Cable



1 x Mains Power Adaptor

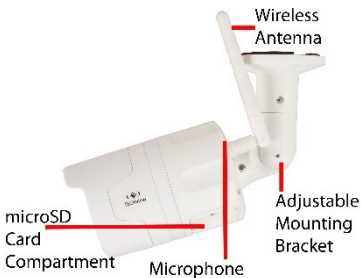
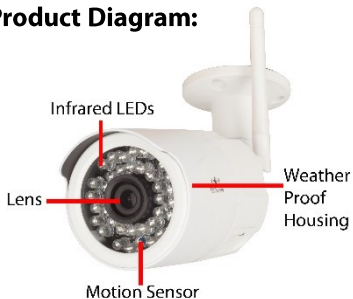


1 x Mounting Hardware



1 x Software CD

Product Diagram:



LED Status Indicator:

Colour	Description
Green	Starting Up / Working
Green Flashing	Connecting To Wi-Fi

Note: The LED can be turned off in the settings if required.

Installation & Mounting:

1. Using a screwdriver; unscrew the 2 screws of the microSD card compartment which is located at the bottom of the camera.



2. Insert a microSD card (not included) into the microSD card slot. Once you have inserted the microSD card; place the battery compartment cover back on and screw securely in place.



3. Before mounting the camera, you may wish to complete the app setup process first. Your smartphone is required to be placed near the camera's microphone to complete the app setup. If your camera is mounted in a high place such as a wall or ceiling; it may be difficult to hold your smartphone near the camera while already installed.

4. Position the camera in a location such as a ceiling or wall and mark the screw holes in which you want to position the camera.

5. Using the mounting hardware provided; fix the camera in place by the screws or wall plugs depending on if it's surfaces such as brick and concrete.

6. You may wish to adjust the angle of the mounting bracket for the best viewing angle; use the Allen key provided to adjust this.

7. Connect the mains power adaptor to a suitable 240VAC mains wall outlet. Plug the power cable into the DC power socket of the Wi-Fi camera and turn on.

8. If installed in a wall or ceiling that is further away from a wall outlet. You can use the included 2m power cable to extend the length of the power cable.

9. Once the device is powered up; the LED status indicator should display green indicating start up.

Setup:

1. Download the app "NetSee" from the Google Play Store for Android smartphones or the App store for iOS.

App Name: NetSee

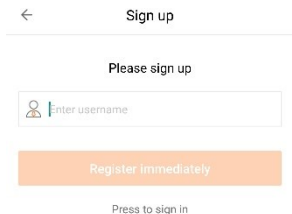


2. Once you have downloaded and installed the app; open the app and a sign in page should display.

3. Press the sign up button for first time use.



4. Enter a suggested email address for the username and press "register immediately" once complete.



5. Enter a suggested password between 6-18 numbers, letters or characters. Press the finish button once your password has been entered.

Note: Must contain at least a number or character and letter together.

← Set password

Your user name is [rpoolc33]. Please set your password

Please input a password

Please input a password again

Password length 6~18 bit, numbers/letters/characters conta in at least two

Finish

6. Enter your username and password into the sign in screen and press the “sign in” button to log in to your account.

← Sign in

Sign in to check your personal monitor

Username

Password

Sign in

[Forget password?](#)

7. Press the add camera button to connect the IP camera or the + button in the top left hand corner.

NOTHING HERE, ADD SOME VIDEOS TO
SEE, MOVE, RIGHT NOW

Add Camera

8. Press the “connecting my camera” button; you will also notice a voice prompt will guide you through the setup.



9. Connect to your local modem/router by pressing the select button.

← Step 1 Step 2: Connecting to net...

<unknown ssid> **SELECT**

Wi Fi password

Next

No Wi-Fi Password

10. Choose your local Wi-Fi network from the list on your smartphone. Press the scan button if you wish to refresh the Wi-Fi list.

← Nearby Wi-Fi scan

vividwireless-E0A5

Madgwick's

11. Select your appropriate time zone depending on which state and country you're from.



12. Ensure the volume on your smartphone is turned all the way up. Place your smartphone close to the microphone located at the front left hand side of the camera so it's able to hear the pairing sound correctly. The LED status indicator will begin to flash green.

← Step 2 send the sound wave

Please move the phone speaker close
to the camera



13. Press the sound wave button to send a pairing sound to the IP camera. Ensure your smartphone is placed right next to the IP camera and in you're in a low level sound environment.

← Step 2 send the sound wave

Please click the icon **Send sound wave**
and connect the camera to the
wireless network

Click to send
the sound wave

14. The sound pairing signal will now be playing. If you can't hear the sound; make sure your smartphone volume is all the way up.

Sending sound wave...



15. The pairing will now complete the setup and finish successful.
If the pairing is unsuccessful then please repeat the pairing setup steps or refer to

the troubleshooting guide at the end of the manual.

← Step 2 send the sound wave

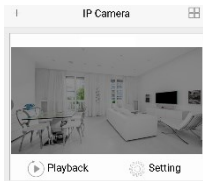
Finish sending and wait for
binding successfully voice prompt
from camera

If no voice prompt, please try to send sound



[Click to see "Binding successfully"?](#)

16. If pairing is successful; the camera will automatically add to the device list. Press on the camera image to start viewing. Refer to the troubleshooting guide if unsuccessful. To refresh the view; swipe down on your smartphone.



Operation:

Recording:

Smartphone: To record from your smartphone; open the camera in your device list once successfully paired. Press the recording button in the bottom left hand corner to begin recording on your smartphone.

Press the recording button again to stop recording.

microSD Card: Once the microSD card has been entered into the camera and correctly paired; the camera will automatically begin recording.

Motion Detection: The motion detection can be setup in the alarm settings which will send you a push notification if someone has activated the camera by motion. Press the alarm notification to

switch to live view once it has been activated.



Playback:

Open the smartphone app and press the playback button which is underneath the camera in the device list. This will play back the recordings from the microSD card.

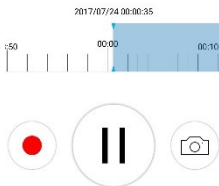
To play back the recordings from your smartphone; press the album button located at the bottom of the app.



Select the correct year, month, day and hour to select your playback files.



Once selected you can fast forward, fast rewind or screen shot when the video is displayed.



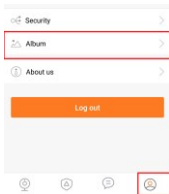
Snapshot Image:

This camera allows you to create a snapshot image and save it on your phone.



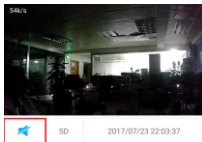
Press the snapshot button located in the bottom right hand corner to save an image to your phone.

To view these files; go to the album which is located at the bottom right hand corner of the device list.



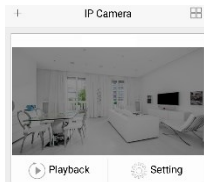
Audio:

To hear the audio from the camera; press the audio button located in the live camera view. Press it again to mute the audio.



Camera Settings:

Press the settings button of the camera located in the device list of the app.



LED: Press the LED tab to turn of the LED status indicators; press it again if you wish to turn it back on.

LED



Image Flip: Press the image flip button to choose between upwards and downwards. Since the camera has a magnet base, you can select the image to be in the upright position even though the camera is

Image Flip

Upward >

positioned upside down.



Alarm: Press the alarm button to show the alarm and motion detection settings.

Alarm

Not open >

Alarm



Alarm sound



Alarm Tone

Obscura >

Grade

Default >

Alarm time

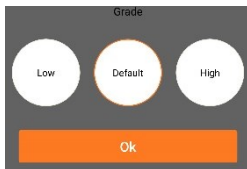
22:00~07:00 >

Alarm: Press the alarm tab to turn off motion detection or press it again to leave it on. Motion detection will be turned on by default.

Alarm Sound: You will hear the alarm sound from your smartphone if the motion has been detected. Press the tab to turn off these sounds.

Alarm Tone: There will be a default alarm sound when the motion is triggered. Press the alarm tone tab to select from any sound file located on your phone if you wish to change the alarm sound.

Grade: Select between low, medium (default) or high movement sensitivity for the motion recording.



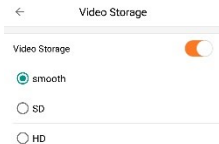
Alarm Time: This allows you to choose a start and end time to choose from for the motion detection. For example; you can just select the camera to record in motion detection for day or night time.



Video Storage: Press the video storage tab to select between standard or high definition recording.

Video Storage smooth recording >

Press the video storage tab to turn off storing the video onto your microSD card. You can select between smooth, SD (VGA) and HD (720p) recording.

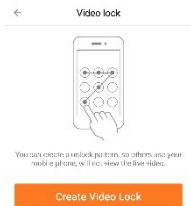


Video Lock: Press the video lock tab to create a lock so that other people using your smartphone are unable to view the video.

Video lock

Not set >

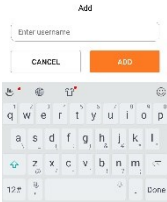
You can create a lock pattern by pressing the create video lock button.



Sub Account Management: Press the sub account management tab to create new users. Up to 15 people can be added to this camera including the admin.

Sub-account Management

>

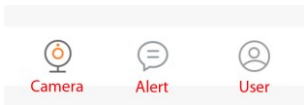


Enter a suggested username and password for the user and press the add button.

Ask the user to download the smartphone app and enter the username and password that you have provided to sign in and view the camera.

To delete a sub account once created; press the delete button to remove them from the user list.

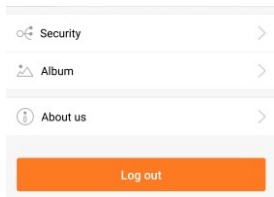
Interface Settings:



Camera: Displays the camera device list.

Alert: Displays the motion detection events.

User: Displays the current user settings and album.



User Settings:

Security: Allows you to change your password, add a security question and email.

-  Change password >
-  Security question >
-  Security email >

It is suggested that you set a security email and question in case you forget your password.



Set Security email



Please enter a secure email



Please enter the code

SEND CODE

Album: View the saved recordings and images.

Located in the top right corner, you're able to share the images through social media such as Facebook, Twitter, email or SMS.

About Us: Displays the current app version.

Logout: Press this button to logout from the app and return to the login screen.

Software:

Insert the software CD into the disk drive of your computer.

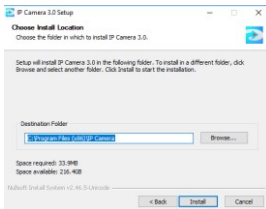
The disk should automatically run, double click on the setup file to start the setup. If it doesn't run automatically, open My Computer and double click on the disk drive (D:).

Note: This PC software is only suitable for Windows; it will not work on Mac.

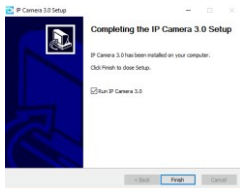
Press the next button to start the setup.



Press the install button to start installing the files in your computer. Note: The default install location is program files, you can change this if you wish by pressing the browse button.



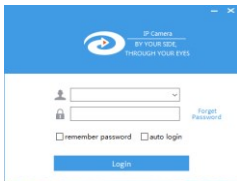
Press the install button to start installing the files in your computer. Note: The default install location is program files, you can change this if you wish by pressing the browse button.



The installation is now complete; press the finish button to launch the PC software.

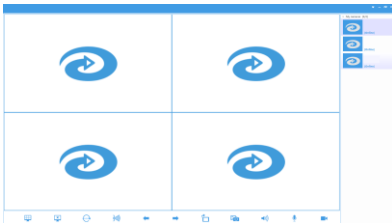
A dialog box will open for you to enter your current username and password that you setup using your smartphone.

Note: The camera needs to be setup by the smartphone first with an account before you can use the software. You can't setup the camera through the software first.



Once you have entered your username and password; press the login button. You can also select to remember your password or automatically login by ticking the appropriate checkbox.

The device list will appear in the right hand side with the cameras that you have added to your smartphone. Double click on the camera that you would like to open.



There is a list of options in the bottom task bar that you can select to change. From left to right:



Screen View: Select between such views as single, quad view or six view depending on how many cameras you have.

Turn Off Camera: Turn off the camera screen

Resolution: Switch between smooth, Standard (VGA) and HD (720p) recordings.

Alarm Setting: Select the motion detection time frame.

Page Up: Cycle through your cameras if you have more than one.

Page Down: Cycle through your cameras if you have more than one.

Rotate Screen: Choose between portrait or landscape view.

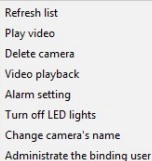
Image Capture: Select to save a current screenshot of the image.

Speaker On/Off: Turn the current speaker of the camera either on or off.

Microphone On/Off: Turn the current microphone of the camera on or off.

Video Record: Select to start recording from the camera.

Some additional settings are found by right clicking on your camera in the device list located on the right hand side.



- Refresh list
- Play video
- Delete camera
- Video playback
- Alarm setting
- Turn off LED lights
- Change camera's name
- Administrate the binding user

You can choose between refreshing the video list, play video, deleting the camera, video playback, alarm settings, turning off the LED lights, changing the camera name and admin for the main user.

Please Note: If the software doesn't install then please install the credit redistributable package located on the CD which will help you to install the software correctly.

Troubleshooting:

Problem	Solution
The camera will not pair	Make sure the volume on your smartphone is all the way up
	Make sure the sound level in your environment is quiet to avoid the camera picking up additional sounds
	Hold the phone as close as possible to the camera

	<p>Check that the camera is in binding mode; the LED indicator should be flashing green</p>
<p>Wireless Network does not exist</p>	<p>Check if the wireless network is hidden, if so then disable the hidden broadcast</p>
	<p>Check if the Wi-Fi frequency is 2.4GHz, this device can't support 5GHz networks</p>

	<p>Check if the Wi-Fi SSID name has any special characters or numbers, please remove these special characters from the name and try to connect again</p>
<p>Wireless Network connection failed</p>	<p>Check if the Wi-Fi password is correct and please try again</p>
	<p>Check if the Wi-Fi network is using WEP encryption, if</p>

	<p>so please change it to WPA or WPA2</p>
<p>Network abnormal, please check the router</p>	<p>Verify that the Wi-Fi network is able to connect to the internet</p>
<p>The camera will not show in the device list after successful pairing</p>	<p>Refresh the device list by swiping down on your smartphone</p>
	<p>Exit the app and login again</p>
<p>The camera appears offline</p>	<p>Re-insert the USB mains power adaptor and restart the device as sometimes it</p>

	can be caused by network instability
Software won't install on my PC	Ensure your computer is a Windows PC, not a Mac
	Install the distribution package located on the software to fix the issue
The Wi-Fi network is not showing	Make your Wi-Fi network visible, the unit can't show hidden networks
	Check to see if your network is 5G, this device

	only supports 2.4GHz Wi-Fi
Problem with the binding process, linked to another account	Contact your place of purchase and provide them with the ID number shown on the message so that the device can be reset
Won't connect to the internet	Check to see if the Wi-Fi password has been changed
The microphone isn't working	Check the audio settings on your phone and allow

	the app to have access to the microphone
The video is not clear	Change the recording setting to HD to show the highest quality
Can't replay video	Check to see if a microSD card has been inserted correctly
	Only after 10 minutes of inserting the microSD, can the video be replayed.

	Put the microSD card in a computer to check if it's still working
	Reformat the microSD card
	Reset the camera
No push notifications when alarming	Check the settings of your phone to ensure the push notifications are allowed

FAQ:

1. Q: I have forgotten my password.

A: Press the forget password button to retrieve it via your security email address. If you have not set this; please contact your place of purchase to have the unit reset.

2. Q: Can more than one person view my camera

A: Yes, up to 15 users can view a single camera. The camera paired originally with the unit is the administrator.

3. Q: How many cameras can you add to the smartphone app?

A: Up to 99 cameras can be added to a single app however it will slow down opening the device list if you have multiple cameras added.

4. Q: Can this camera be viewed in an internet browser?

A: No; only can be viewed via the smartphone app or PC software.

5. Q: Can the software work on Mac?

A: No; it can only work on Windows.

6. Q: Why can't some smartphones show the video?

A: The camera requires a minimum Android version above 2.3 and 5.1 for iOS devices.

7. Q: Can the night vision be turned off?

A: The night vision is switched on automatically when low light is detected.

8. Q: Can the camera be setup via my PC?

A: The camera needs to be setup by a smartphone first in order to create an account.

9. Q: Can I delete my camera from the app?

A: Yes; you can delete the camera from the app by going into the camera settings and pressing the orange delete button which is located at the bottom of the screen.

10. Q: How do I reset my camera?

A: Press the small white button located at the end of the camera cable. Hold it down for up to 10 seconds until the LED lights are off.

Features:

- . Easy Sound Pairing Setup
- . Free Android & iOS™ Smartphone App
- . Windows PC Software
- . In-Built Audio
- . Motion Detection & Manual Recording
- . microSD Card & Smartphone Recording

Specifications:

Wi-Fi Frequency: 2.4GHz

Image Sensor: 1/4" CMOS

Resolution: 720p (1280 x 720)

Megapixel: 1.0

Frame Rate: 25fps

Viewing Angle: 75°

Video Compression: H.264

Video Format: .264

Infrared: 35 x IR LEDs

Infrared Range: Up to 20m

Supported User Accounts: 15

Supported IP Cameras: Up to 99

Video Storage Time: Up to 40 Days

(Smooth Recording)

Storage: Up to 64GB microSD Card

Power Consumption: 500mA

Power Supply: 12VDC, 1A

Dimensions: 202(L) x 65(Dia)mm