



**4CH 1080P WIFI NVR**

**With 4pcs WIFI IP Camera kit**

*Model No QV-3162*



**USER'S MANUAL**

<b>CHAPTER 1 SAFETY INSTRUCTION.....</b>	<b>4</b>
<b>CHAPTER 2 PRODUCT OVERVIEW.....</b>	<b>5</b>
1.1 REAR PANEL.....	5
1.2 REMOTE CONTROLLER (FOR REFERENCE ONLY).....	6
<b>CHAPTER 3 WIRELESS NVR COMMON OPERATIONS.....</b>	<b>7</b>
3.1 USING THE SUPPLIED MOUSE.....	7
3.2 USING THE VIRTUAL KEYBOARD.....	7
3.3 PASSWORD & LOCKING THE SCREEN OPERATION.....	7
<b>CHAPTER 4 WIRELESS NVR STARTING UP.....</b>	<b>8</b>
4.1 STARTUP WIZARD.....	8
4.2 LIVE VIEWING SCREEN.....	12
<b>CHAPTER 5 WIRELESS NVR MENU.....</b>	<b>14</b>
5.1 OVERVIEW.....	14
5.2 DISPLAY.....	15
5.2.1. Wireless Camera.....	15
5.2.2. Live.....	16
5.2.2. Output.....	17
5.2.3 Private Zone.....	18
5.3 RECORD.....	19
5.3.1 Record.....	19
5.3.2 Record Schedule.....	20
5.4 CAPTURE.....	21
5.5 NETWORK.....	23
5.5.1 Network.....	23
5.5.2 E-mail.....	25
5.5.3 E-mail Schedule.....	26
5.5.4 DDNS.....	27
5.5.5 RTSP.....	28
5.5.6 FTP.....	29
5.6 ALARM.....	30
5.6.1 Motion.....	30
5.7 RECORD SEARCH & BACKUP.....	32
5.7.1 General.....	32
5.7.2 Events.....	33
5.7.3 Picture.....	34
5.7.4 Playback Video Recordings.....	35
5.7.4.2 Time Frame.....	37
5.7.5 Play Backup Files.....	37
5.8 DEVICE.....	41
5.8.1 HDD.....	41

5.8.4 Cloud Storage.....	42
5.9 SYSTEM.....	43
5.9.1 General.....	43
5.9.2 DST.....	44
5.9.3 NTP.....	45
5.9.4 Users.....	46
5.9.5 Info.....	47
5.9.6 Log.....	48
5.10 ADVANCED.....	49
5.10.1 Maintain.....	49
5.10.2 Events.....	50
5.11 SHUTDOWN.....	51
<b>CHAPTER 6 REMOTE ACCESS VIA WEB CLIENT.....</b>	<b>52</b>
6.1 WEB PLUGIN DOWNLOAD AND INSTALLATION.....	53
6.2 WEB CLIENT MANAGER.....	56
6.2.1 Live Interface.....	56
6.3.2 Playback.....	58
6.3.3 Local Setting.....	62
<b>CHAPTER 7 APPENDIX.....</b>	<b>63</b>
7.1 TROUBLESHOOTING.....	63
7.2 USAGE MAINTENANCE.....	64
7.3 ACCESSORIES (FOR REFERENCE ONLY).....	65

# Chapter 1 Safety Instruction

Please carefully read the following safety instruction so as to avoid personal injuries and prevent the equipment and other connection devices from being damaged.

**1. Power sources (note: please use the power supply attached or specified by the manufacturer)**

Never operate the equipment by using unspecified power supply.

**2. Never push objects of any kind through openings of WIRELESS NVR**

Never push objects of any kind through openings of WIRELESS NVR so as to avoid electric shock or other accidents.

**3. Do not put the equipment in the dusty field**

Do not put the equipment in the dusty field.

**4. Do not place the equipment under rain or humid environment**

Do not place the equipment under humid environment like basement. If the equipment is accidentally in contact with water, please unplug the power cable and immediately contact your local dealer.

**5. Keep the surface of the equipment clean and dry**

Use soft damp cloth to clean the outer case of WIRELESS NVR (do not use liquid aerosol cleaners)

**6. Do not operate if any problems are found**

If there are any strange smell or sound from WIRELESS NVR, unplug the power cable and contact the authorized dealer or service center.

**7. Do not try to remove the upper cover**

**Warning:** Do not remove the cap of WIRELESS NVR so as to avoid electric shock.

**8. Handle with care**

If WIRELESS NVR does not work normally because of hitting on the hard object, please contact the authorized dealer for repair or replacement.

**9. Use standard lithium battery (Note: Use the batteries attached or specified by the manufacturer)**

After cutting off the power supply, if the system clock cannot continue to work, please replace the standard 3V lithium battery on the main board.

**Warning:** Turn off WIRELESS NVR before replacing the batteries, or you may be suffered from serious electric shock. Please properly dispose of the used batteries.

**10. Put the equipment in a place with good ventilation**

The WIRELESS NVR system includes HDD, which produces large amount of heat during operation. As a result, do not block the ventilation openings (on the top, bottom, both sides and the reverse side) for cooling the system during operation. Install or put the equipment in the place with good ventilation.

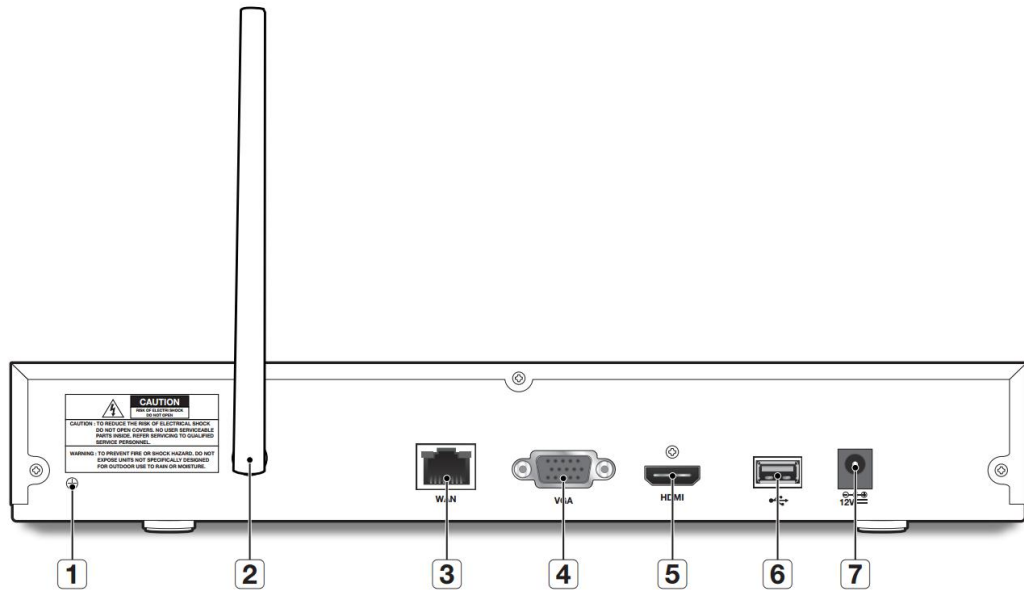
**11. The attached power adapter can only be used for 1 set of WIRELESS NVR. Do not connect more equipment, or WIRELESS NVR may be restarted repeatedly because of insufficient power.**

**12. Prevent the equipment from water dropping or splashing. Do not place objects containing water, such as flower vase, on the equipment.**



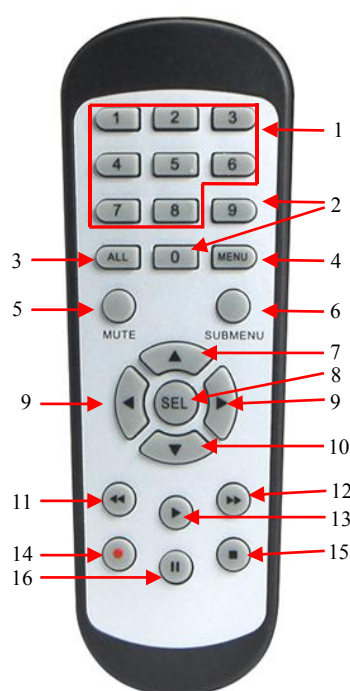
# Chapter 2 Product Overview

## 1.1 Rear Panel



NO	Physical interface	connection
1	Ground connection	A terminal to connect a separate ground cable. * Make sure to add a ground cable in order to use the equipment safely.
2	Antenna	Receive signal from wireless camera.
3	WAN:(RJ45) Network port	Connect with WAN,Ethernet cable.
4	VGA port	Connect with VGA display devices,such as PC monitor.
5	HDMI	Connect with HDMI display devices,such as PC monitor.
6	USB port	Connect with USB.
7	Power port	Connect with the power supply DC12V 2A,included with the device.

## 1.2 Remote Controller (For Reference Only)



No.	Icon	Description
1	1-8	Numeric keys Press to display channel 1~8
2	9、0	Numeric keys
3	ALL	Press to display all channels Multiple display mode
4	Menu	Press to enter or exit the Main Menu
5	Mute	Mute On/off (not support this function)
6	Submenu	Go to submenu
7	▲	Up arrow key; Volume increase
8	SEL	Press to enter the selected menu item and edit the setting
9	◀▶	Left/Right key; Decrease/increase parameter value of control bar.
10	▼	Down arrow key; Volume decrease
11	◀◀	Press to rewind during video playback
12	▶▶	Press to fast forward during video playback
13	▶	Press to play recorded video or enter the recording search menu
14	●	Press to start manual recording
15	■	Press to stop manual recording or stop the video playback
16	⏸	Press to pause the video playback or enter frame-playback mode

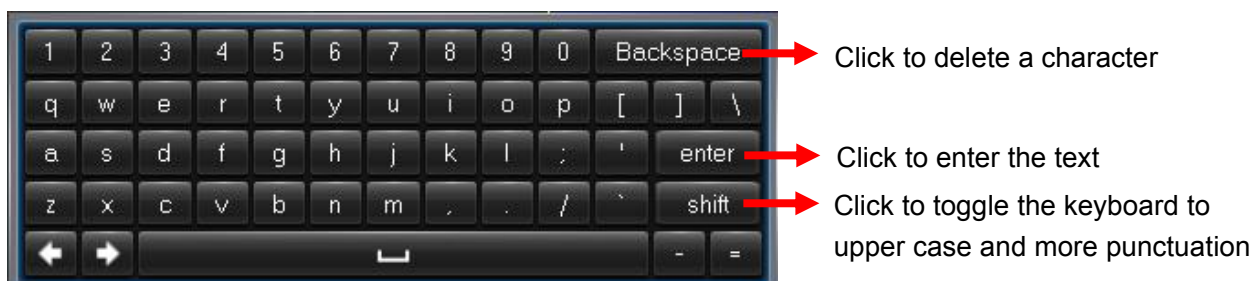
## Chapter 3 WIRELESS NVR Common Operations

### 3.1 Using the Supplied Mouse

Left Button of Mouse	Right Button of Mouse
<b>Click once</b> to choose an item in the menus and confirm your selection.	Click once to open the pop-up menu on the Live Viewing screen and to exit from the menus.
<b>Click once</b> upon a channel on Live Viewing screen to open Camera Quick Toolbar	
<b>Double-click</b> on the channel on the exit from the menus. Live Viewing screen to view the channel in full screen mode. Double-click again to exit the full screen mode.	
<b>Click and hold</b> to drag an area on motion mode or adjust the values of sliders and scales on menu mode.	

### 3.2 Using the Virtual Keyboard

You will see the virtual keyboard automatically on the screen anytime you need to enter data



### 3.3 Password & Locking the Screen Operation

When you run the WIRELESS NVR for the first time, you will be required to set your password immediately in order to protect your privacy. Please be sure to record your username and password and save them in a secure place. If you forget your password, you will be unable to login the system, please contact your reseller to reset the password.

The screen will be locked to protect unauthorized OSD operation while the WIRELESS NVR is not in menu operation for a while. If necessary, you can also lock the screen operation manually. To do so, right-click on the Live Viewing screen to make the Pop-up menu bar visible, then click the Lock

icon .



## Chapter 4 WIRELESS NVR Starting up

### 4.1 Startup Wizard


After WIRELESS NVR startup is completed, the Startup Wizard will be displayed. Wizard setting menu includes: Set Admin Password ,Homepage, HDD Management, Network Configuration, Email Configuration , Record Schedule and General System Configuration.

1).**Set Admin Password:** Please create a user name and password for your device.

User name

Password

Retype password

 Please create a user name and password. You will not be able to continue the Startup Wizard until you complete this step.

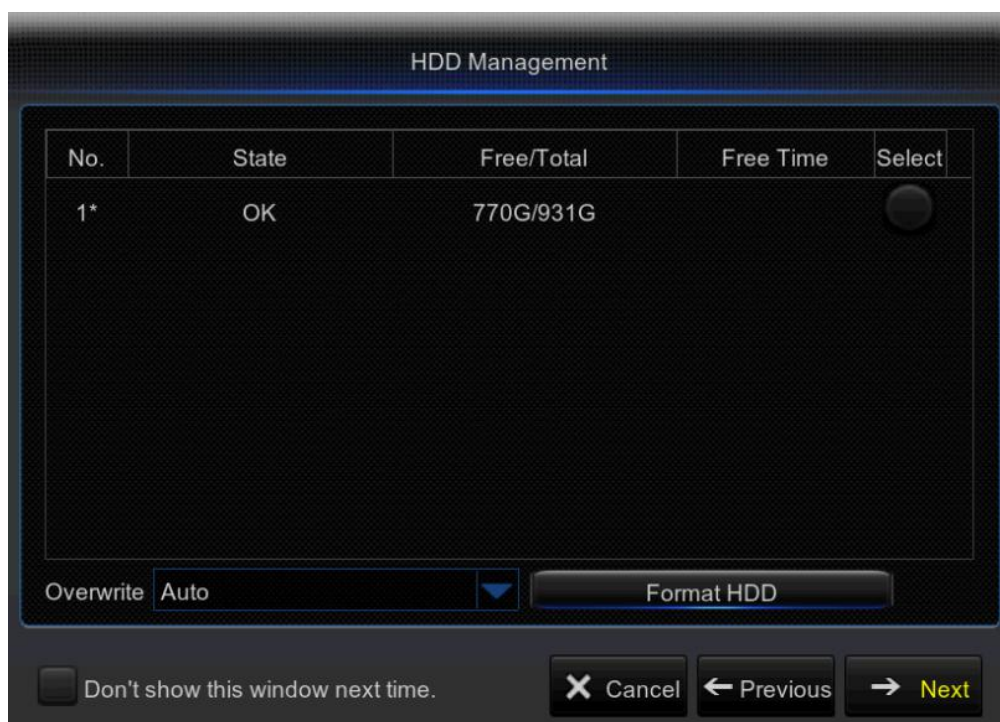
☐ Don't show this window next time.

## 2) Homepage and HDD Management

You can click “Cancel” to skip Start Wizard. Tick “Don't show this window next time” if you don't want to display Start Wizard when system start-up.

If the HDD is installed in the WIRELESS NVR for the first time, it will be needed to be format.

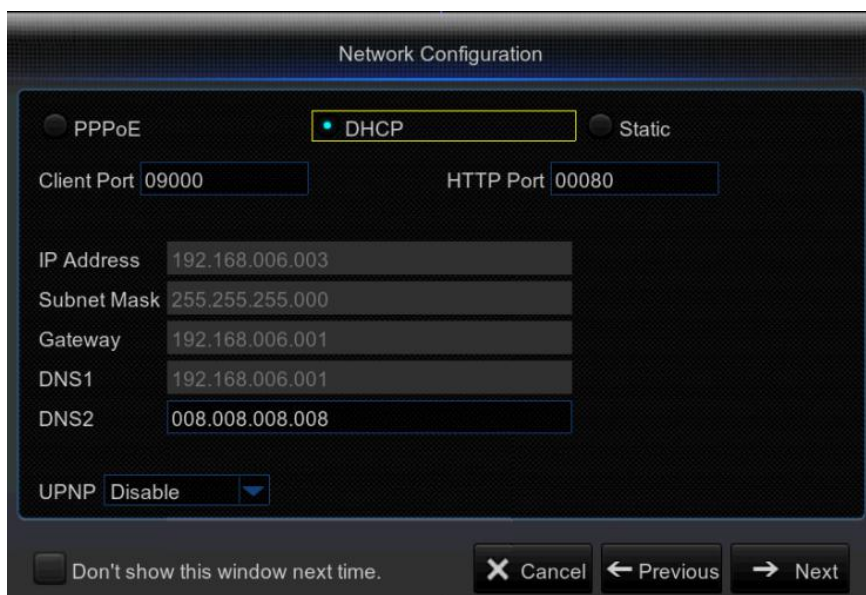
Select the HDD which you want to format, and then click “Format HDD” button to format the HDD.



**Overwrite:** Use this option to overwrite the old recordings on the HDD when the HDD is full. For example, if you choose the option 7 days then only the last 7 days recordings are kept on the HDD. To prevent overwriting any old recordings, select Disable. If you have disabled this function, please check the HDD status regularly, to make sure the HDD is not full.

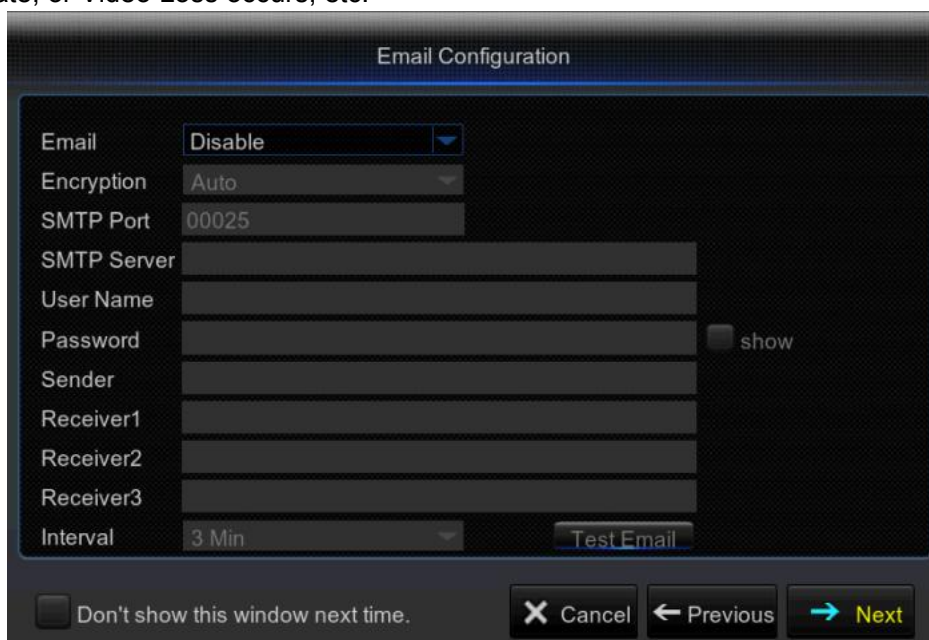
### 3) Network Configuration

This menu allows you to configure network parameters, such as PPPoE, DHCP, Static. The most common types are DHCP or Static. Most probably your network type is DHCP, unless the network is manually addressed (usually called- Static). If you need an authentication user name and password to the Internet, then choose PPPoE.



### 4) Email Configuration

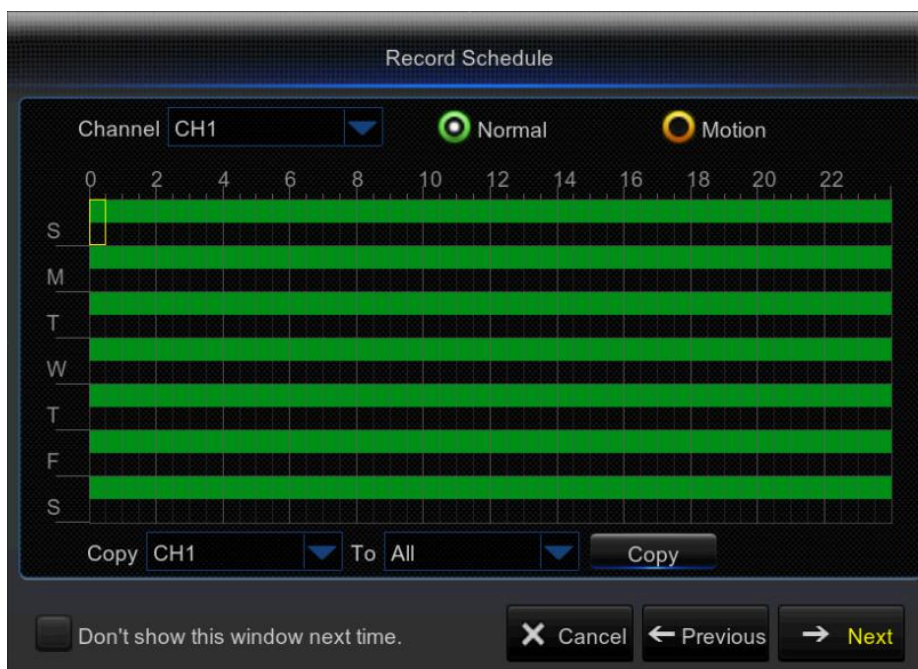
This menu allows you to configure email settings. Please complete these settings if you want to receive the system notifications on your email when a motion is detected, HDD becomes full, HDD is in error state, or Video Loss occurs, etc.





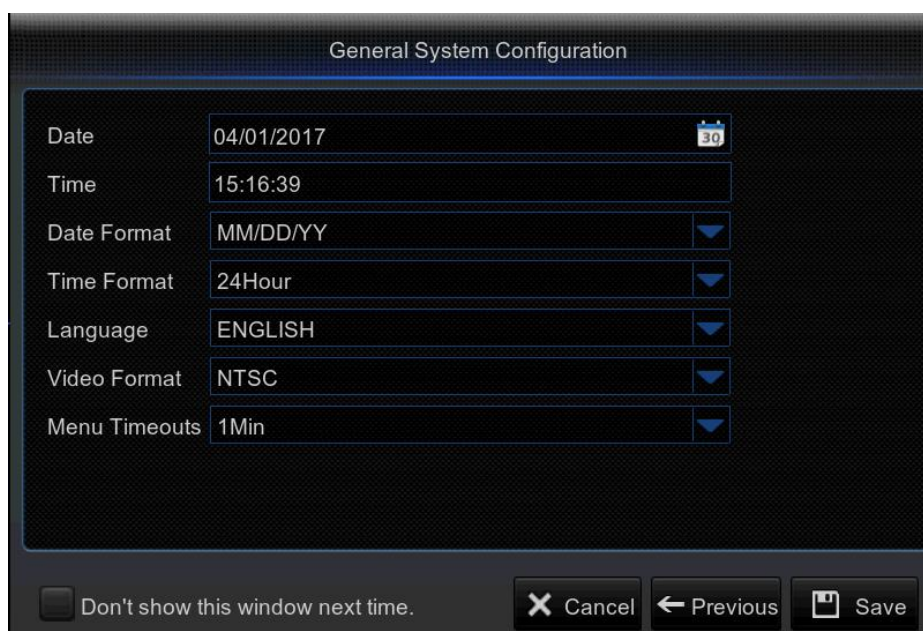
## 5) Record Schedule

This menu allows you to specify when the WIRELESS NVR records video and define the recording mode for each channel. The recording schedule lets you set up a schedule like, daily and hourly by Normal (continuous) recording, Motion recording. To set the recording mode, click first on the mode radio button (Normal, Motion), then drag the cursor to mark the slots.



## 6) General System Configuration

This menu allows you to configure the general parameters of the system, such as Date, Time, Date Format, Time Format, Language, Menu Timeouts, Mode.



## 4.2 Live Viewing Screen

Camera Time  
and Camera  
name

Status Icons  
Camera Quick  
Toolbar



Pop-up Menu Bar

### Status Icons

- R** This indicates that the WIRELESS NVR is currently recording.
- M** The motion icon in Green indicates that the WIRELESS NVR is detecting motion from the camera but not recording.
- M** This icon appears when the camera has detected motion and triggers recording.
- H** The HDD icon indicates that the WIRELESS NVR cannot detect a HDD or the HDD is not formatted.

**VIDEO LOSS:** Connection to the camera has been lost.

**No HDD:** HDD is not installed



### Camera Quick Toolbar



- Click to enter pairing
- Click to adjust the channel color settings
- Click to zoom in the channel
- Click to playback the recent 5 minutes recording
- Click to start recording the channel manually
- Click this to manually capture an image

### Pop-up Menu Bar



- Click to open the Main Menu
- Click to lock/unlock the screen operation
- Click to switch to different camera views
- Click to switch all WIFI channels to mainstream or substream (for live view resolution)
- Click to switch among real-time, balanced, or smooth view. The view effect modes influence only the displayed video quality by bit rate and frame rate but do not influence the recording quality.
- Click to start viewing channels in a sequence.
- Click to playback videos
- Click to view system information

## Chapter 5 WIRELESS NVR Menu

### 5.1 Overview



**A: Alarm** – To set the motion detection function.

**B: Network** - To configure the WIRELESS NVR's access parameters to the network, configure email settings, DDNS parameters, etc.

**C: Capture** – Image capture configuration

**D: Record** – To configure the recording options and set the recording schedule

**E: Display** – To configure how many channels are displayed on the Live Viewing screen, for example color setup, video output resolution, privacy areas, etc.

**F: Record Search** – To search for recordings, events, and captured images

**G: Device** – HDD Management, connection parameters to link your WIRELESS NVR to your Dropbox account.

**H: System** - To modify general WIRELESS NVR settings, such as date and time, User management, view system info, etc.

**I: Advanced** – Advanced settings, for example load default, Firmware update, etc.

**J: Shutdown** - To shut down or reboot the WIRELESS NVR

**K: Default** - To restore the default settings

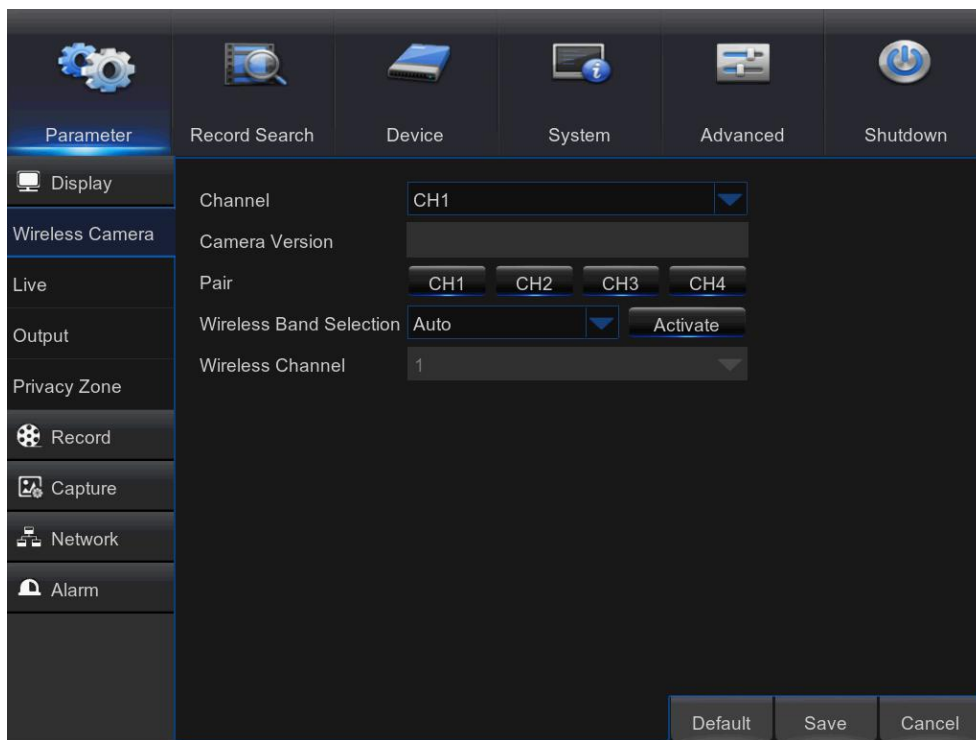
**L: Save** - Click to save the modifications

**M: Cancel** - Click to discard the modifications

## 5.2 Display

### 5.2.1. Wireless Camera

This menu allows you to configure channel parameters.



**Channel:** Select the channel you want to modify.

**Camera version:** Camera firmware Version .

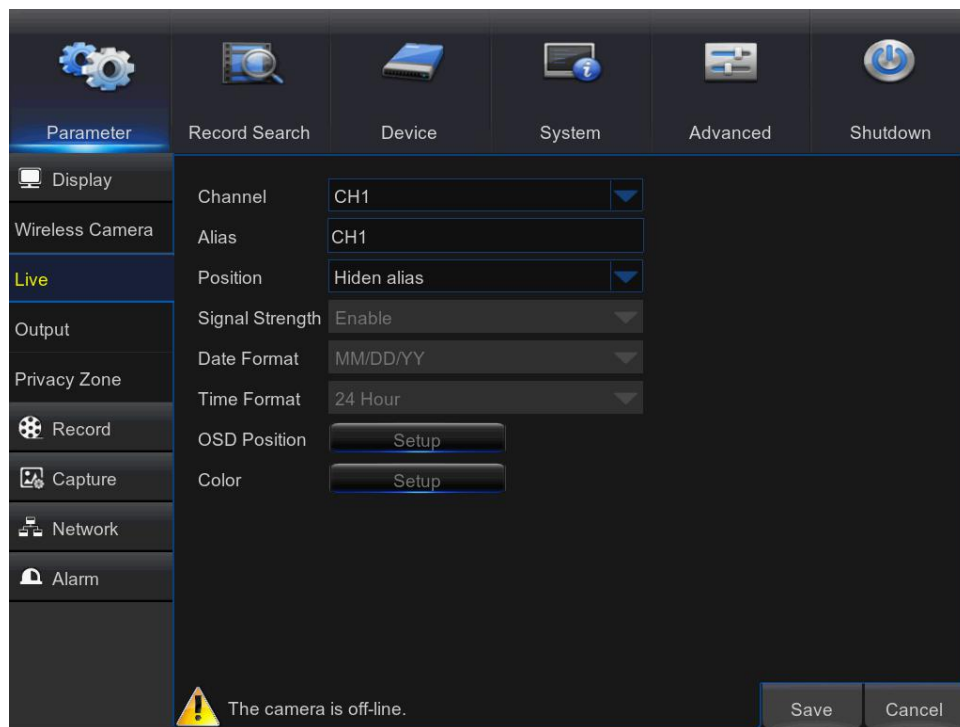
**Pair:** Click the channel button to do pairing.

**Wireless Band selection:** Auto or Manual optional. Auto is recommended.

**Wireless Channel:** Wireless Channel.

## 5.2.2. Live

This menu allows you to configure channel parameters.



**Channel:** Select the channel you want to modify.

**Alias:** Enter the name of the channel.

**Signal Strength:** Set Enable or Disable

**Date Format:** Set date format such as m/d/y, y/m/d or d/m/y.

**Time Format:** 12 hour or 24 hour.

**OSD Position:** Click **Setup** to determine where you want the channel name and current date to be displayed when you are viewing the channel. Drag the channel name box and the date/time box to the desired location on the channel view.

**Color:** Click **Setup** to configure video color settings.



**HUE:** Changes the color mix of the image.

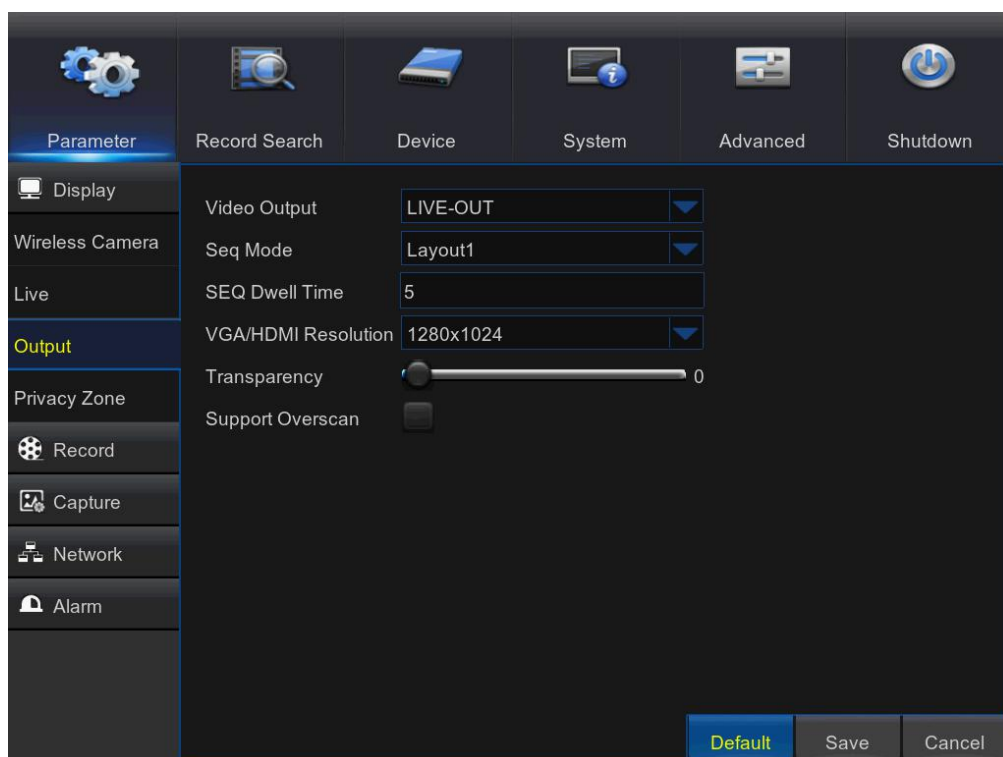
**BRIGHT:** Defines how bright the image appears on the display.

**CONTRAST:** Increases the difference between the darkest black and the whitest white in the image. Modify the contrast if the sections of the image look "grey out".

**SATURATION:** Alters how much color is displayed in the image. The higher the saturation, the brighter and vivid colors will appear to be. Setting this parameter too high can degrade the image quality.

## 5.2.2. Output

This menu allows you to configure video output parameters



**Video Output:** This is the monitor that you use for live view display.

**Sequence Mode:** Choose your favorite layout from the drop-down menu for viewing channels in a sequence on live view.

**SEQ Time:** Set how long you want the live view from a channel to be displayed in a sequence.

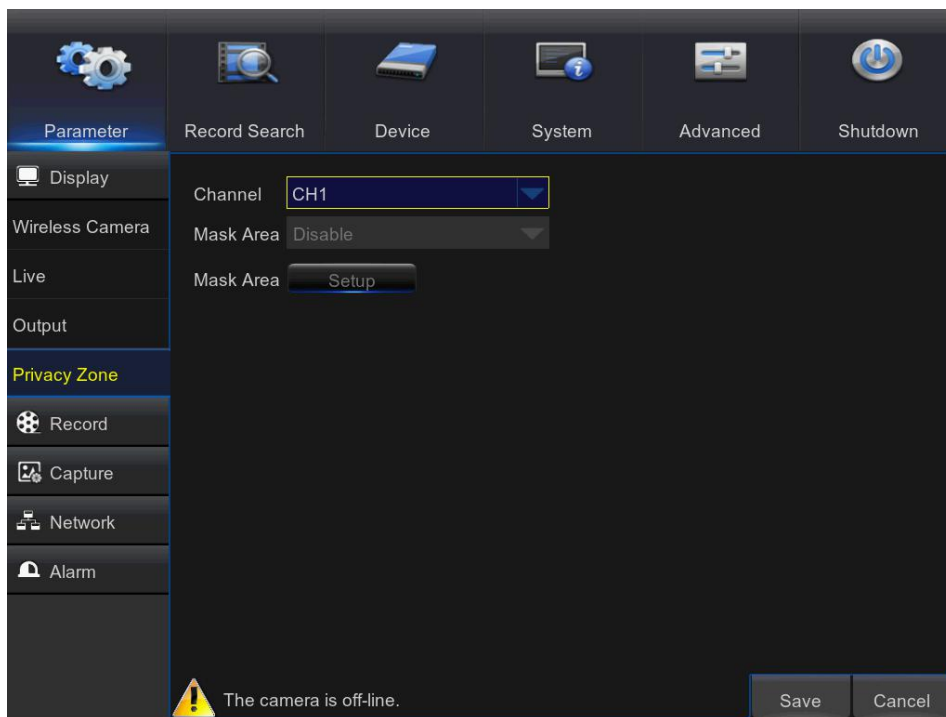
**VGA/HDMI Resolution:** Select the highest resolution your monitor/TV supports. The higher the resolution, the more details you will see on your images. The WIRELESS NVR will restart after you change the resolution.

**Transparency:** Decide how transparent you want the menus to be. Choose partially transparent (see-through) if you need to keep an eye on happenings while adjusting settings.

**Support Overscan:** Check to adjust the position of the video image on the live viewing screen.

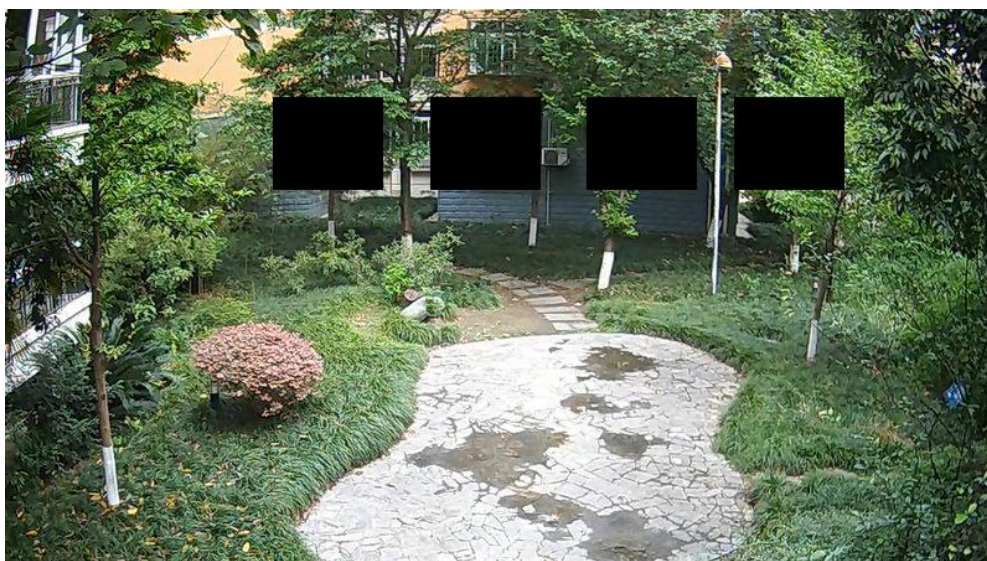
### 5.2.3 Private Zone

This menu allows you to create Privacy Zone(s) if you want to partially cover up part of the image. You can create up to four privacy zones in any size and location on the channel view. These zone(s) appear as “red box rectangle areas”. Just click inside the default red-lined rectangle and drag it where you want to create a privacy zone.



Select the **Channel** where you want to set privacy zone(s), then Enable **Mask Area**. Decide how many privacy areas you want to set and check the area(s) in **Area Setup**, and click **Setup** to open the channel in full screen mode and start marking the privacy zones.

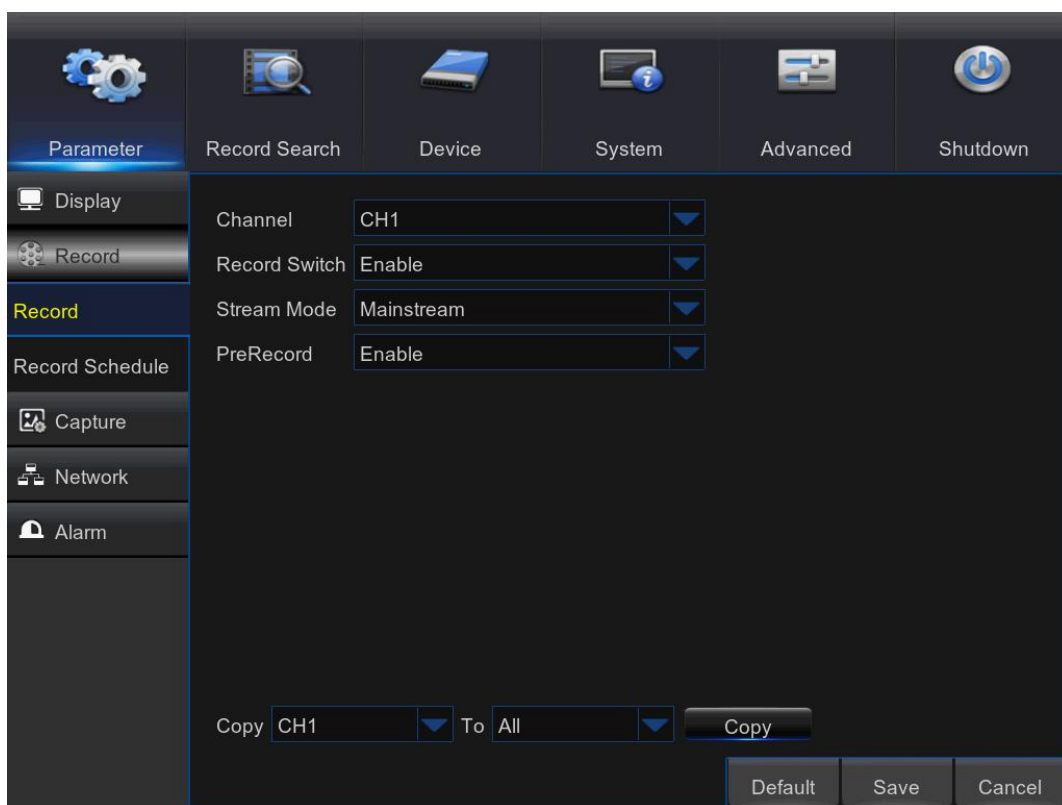
Depending on the number of areas you have chosen in **Area Setup**, you will see areas covered with black rectangles on the channel view. When you have finished marking the areas, right-click to return to the Main Menu.



## 5.3 Record

### 5.3.1 Record

This menu allows you to configure the channel recording parameters.



**Channel:** Select the channel to set its recording parameters.

**Record Switch:** Enable in order to allow the video to be recorded to the HDD.

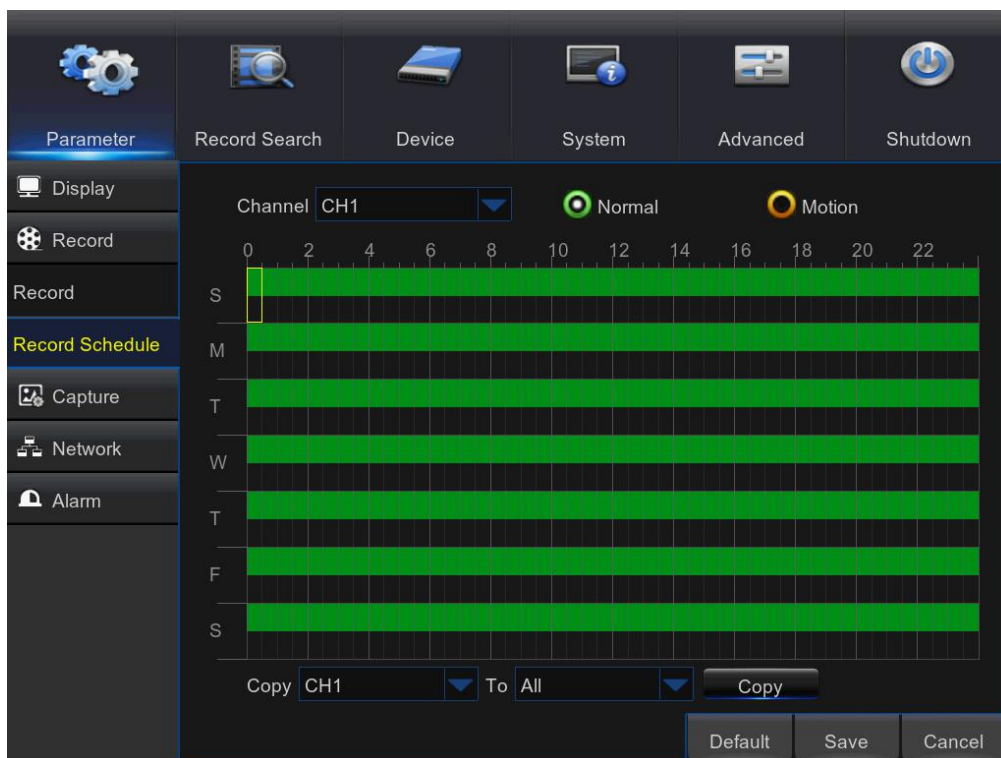
**Stream Mode:** Choose the recording resolution. The available options are Mainstream and DualStream.

**PreRecord:** If this option is enabled, the WIRELESS NVR starts recording a few seconds before an event occurs. Use this option if your primary recording type is motion based.



### 5.3.2 Record Schedule

This menu allows you to specify when the WIRELESS NVR records video and define the recording mode for each channel. The recording schedule lets you set up a schedule like, daily and hourly by normal (continuous) recording, motion recording. To set the recording mode, click first on the mode radio button (Normal, Motion), then drag the cursor to mark the slots. The recording schedule is valid only for one channel. If you want to use the same recording schedule for other channels, use **Copy To** function.



**Channel:** Select the channel to set its recording parameters.

**Normal:** When the time slot is marked green, this indicates the channel performs normal recording for that time slot.

**Motion:** When the time slot is marked yellow, this indicates the channel records only when a motion is detected during that time slot.

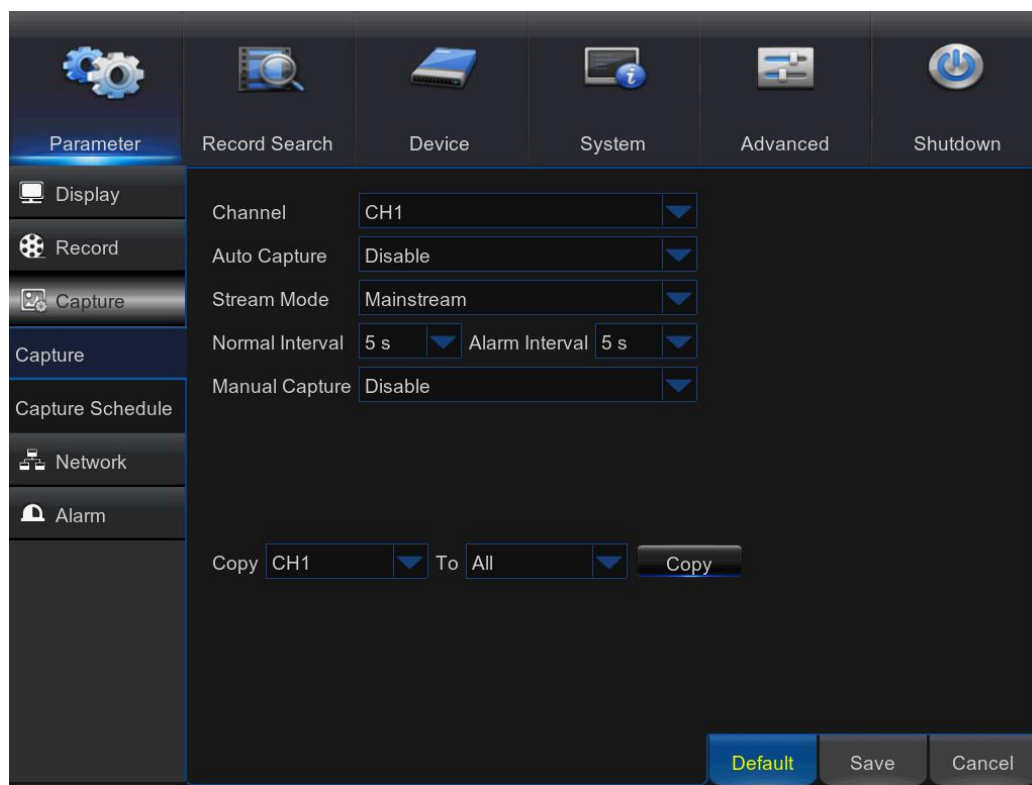
**NOTE:** To use the motion detection, you must enable and configure the motion settings for the channel in Alarm menu. Please see [5.6.1 Motion](#)

**No Record:** A time slot marked black means that there is no recording scheduled for the time slot.



## 5.4 Capture

This menu allows you to configure the snapshot capturing parameters.



**Channel:** Select the channel to set its capture parameters.

**Auto Capture:** Enable or disable automatic capturing on the channel. When this feature is enabled, you can select the snapshot capturing interval.

**NOTE:** When the Auto Capture is enabled, you can select the image capturing interval.

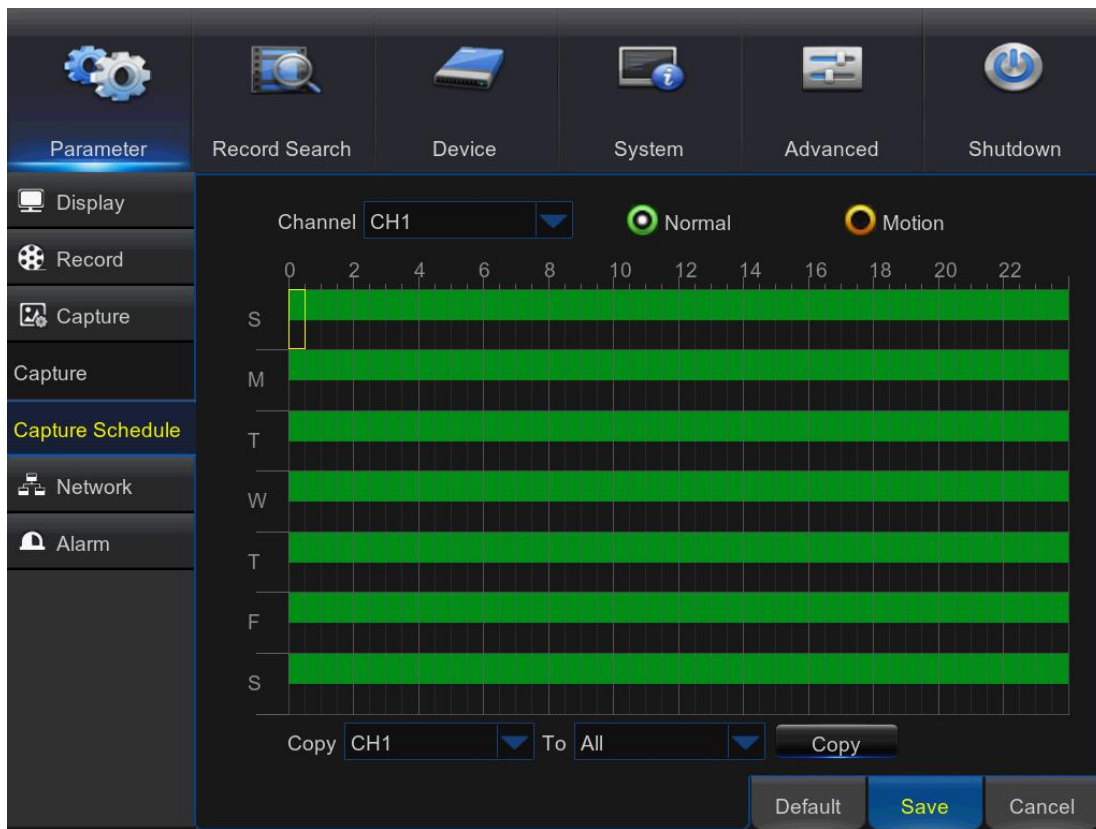
**Stream Mode:** Select the image resolution.

**Normal Interval:** Snapshots are captured based on normal interval.

**Alarm Interval:** Snapshots are captured based on alarm interval only when a motion is detected.

**Manual Capture:** Enable or disable manual capturing on the channel.

## Capture Schedule



**Channel:** Select the channel to set its snapshot capturing schedule.

**Normal:** When the time slot is marked green, this indicates the channel is capturing snapshots based on the Normal Interval.

**Motion:** When the time slot is marked yellow, this indicates the channel is capturing snapshots based on Alarm Interval only when a motion is detected.

**No Capturing:** A time slot marked black means that there is no snapshot capturing scheduled for the time slot.

## 5.5 Network

This menu allows you to configure Network parameters, E-mail setup, DDNS, RTSP & FTP.

### 5.5.1 Network

This menu allows you to configure network parameters, such as PPPoE, DHCP, Static. The most common types are DHCP or Static. Most probably your network type is DHCP, unless the network is manually addressed (usually called- Static). If you need an authentication user name and password to the Internet, then choose PPPoE.

Parameter	Value
Client Port	09000
HTTP Port	00080
IP Address	192.168.006.003
Subnet Mask	255.255.255.000
Gateway	192.168.006.001
DNS1	192.168.006.001
DNS2	008.008.008.008
UPNP	Disable

**Network Type:** Select the network type you are using.

**PPPoE:** This is an advanced protocol that allows the WIRELESS NVR to connect to the network more directly via DSL modem.

**DHCP:** This is the network type when a device on your network (usually a router) assigns automatically all the network parameters for your WIRELESS NVR.

**Static:** Requires all the network parameters to be filled in manually.

**HTTP Port:** This is the port that you will use to log in remotely to the WIRELESS NVR (e.g. using the Web Client). If the default port 80 is already taken by other applications, please change it.

**Client Port:** This is the port that the WIRELESS NVR will use to send information through. If the default port 9000 is already taken by other applications, please change it.

**IP Address:** The IP address identifies the WIRELESS NVR in the network. It consists of four groups of numbers between 0 to 255, separated by periods. For example, "192.168.001.100". You need to enter the IP address manually only if your network type is **Static**.

**Subnet Mask:** Subnet mask is a network parameter which defines a range of IP addresses that can be used in a network. If IP address is like a street where you live then subnet mask is like a neighborhood. The subnet address also consists of four groups of numbers, separated by periods. For example, "255.255.000.000". Alike IP address, you need to enter the subnet mask manually only if your network type is **Static**.

**Gateway:** This address allows the WIRELESS NVR to access the Internet. The format of the **Gateway** address is the same as the **IP Address**. For example, "192.168.001.001". Alike IP address, you need to enter the gateway address manually only if your network type is **Static**.

**DNS1/DNS2:** DNS1 is the primary DNS server and DNS2 is a backup DNS server. Usually should be enough just to enter the DNS1 server address.

**UPnP:** If you want to log in remotely to the WIRELESS NVR using Web Client, you need to complete the port forwarding. Enable this option if your router supports the UPnP. You need to enable UPnP both, on WIRELESS NVR and router. In this case, you do not need to configure manually port forwarding on your router. If your router does not support UPnP, make sure the port forwarding is completed manually

## 5.5.2 E-mail

This menu allows you to configure email settings. Please complete these settings if you want to receive the system notifications on your email when a motion is detected, HDD becomes full, HDD is in error state, or Video Loss occurs.

The screenshot shows the 'Email' configuration menu. The left sidebar contains icons and labels for various settings: Parameter (selected), Record Search, Device, System, Advanced, Shutdown, Display, Record, Capture, Network, Network, Email (highlighted), Email Schedule, DDNS, RTSP, FTP, and Alarm. The main area displays the following settings:

- Email:** A dropdown menu set to 'Enable'.
- Encryption:** A dropdown menu set to 'Auto'.
- SMTP Port:** A text field containing '00025'.
- SMTP Server:** A text field.
- User Name:** A text field.
- Password:** A text field with a 'show' button to its right.
- Sender:** A text field.
- Receiver1:** A text field.
- Receiver2:** A text field.
- Receiver3:** A text field.
- Interval:** A dropdown menu set to '3 Min'.

At the bottom right of the main area is a 'Test Email' button. At the bottom of the entire window are three buttons: 'Default', 'Save', and 'Cancel'.

**Email:** Enable this feature.

**Encryption:** Enable if your email server requires the SSL or TLS verification. If you are not sure, set to be **Auto**.

**SMTP Port:** Enter the SMTP port of your email server.

**SMTP Server:** Enter the SMTP server address of your email.

**User Name:** Enter your email address.

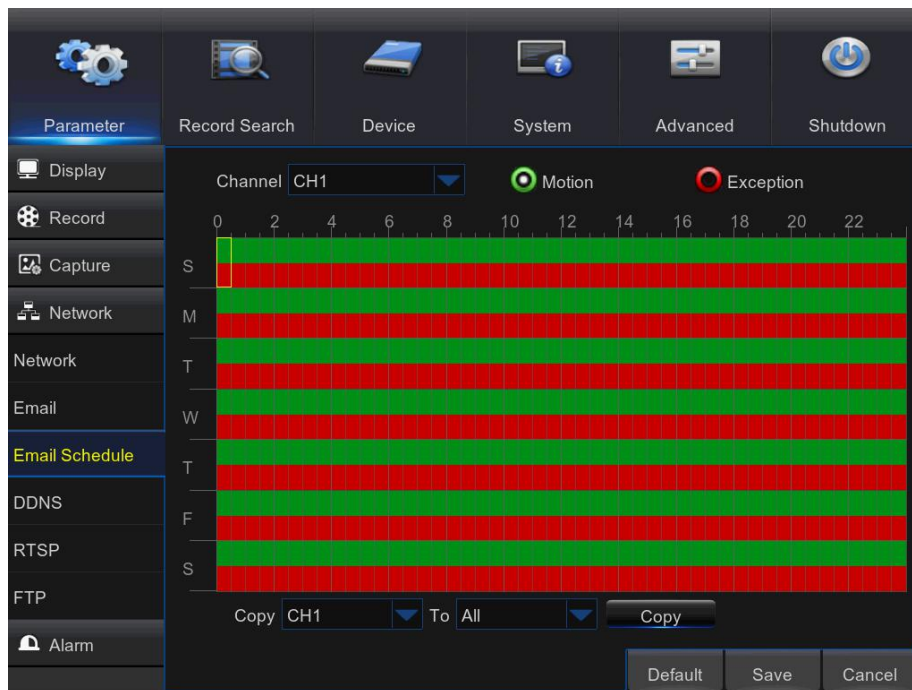
**Password:** Enter the password of your email.

**Receiver 1~3:** Enter the email address where you want to receive the event notifications from the WIRELESS NVR.

**Interval:** Configure the length of the time interval between the notification emails from the WIRELESS NVR.

To make sure all settings are correct, click Test Email. The system sends an automated email message to your inbox. If you received the test email, it means the configuration parameters are correct.

### 5.5.3 E-mail Schedule



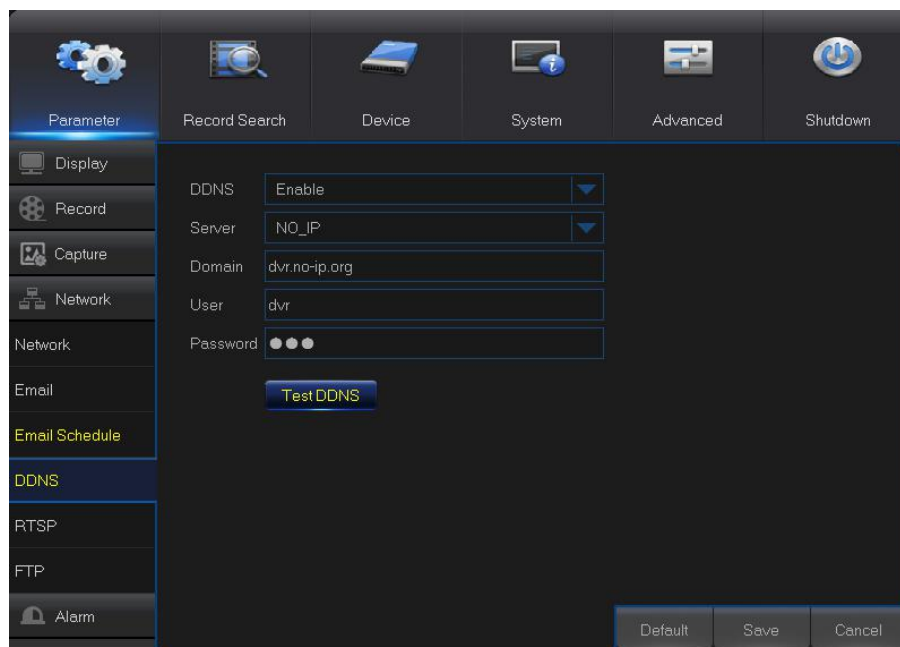
The color codes on email schedule have the following meanings:

**Green:** Slot for Motion.

**Red:** Slot for Exception (HDD full, HDD error, or Video Loss).

### 5.5.4 DDNS

This menu allows you to configure DDNS settings. The DDNS provides a static address to simplify remote connection to your WIRELESS NVR. To use the DDNS, you first need to open an account on the DDNS service provider's web page



**DDNS:** Enable the DDNS service.

**Server:** Select the preferred DDNS server (DDNS\_3322, DYNDNS, NO\_IP, CHANGEIP, DNSEXIT).

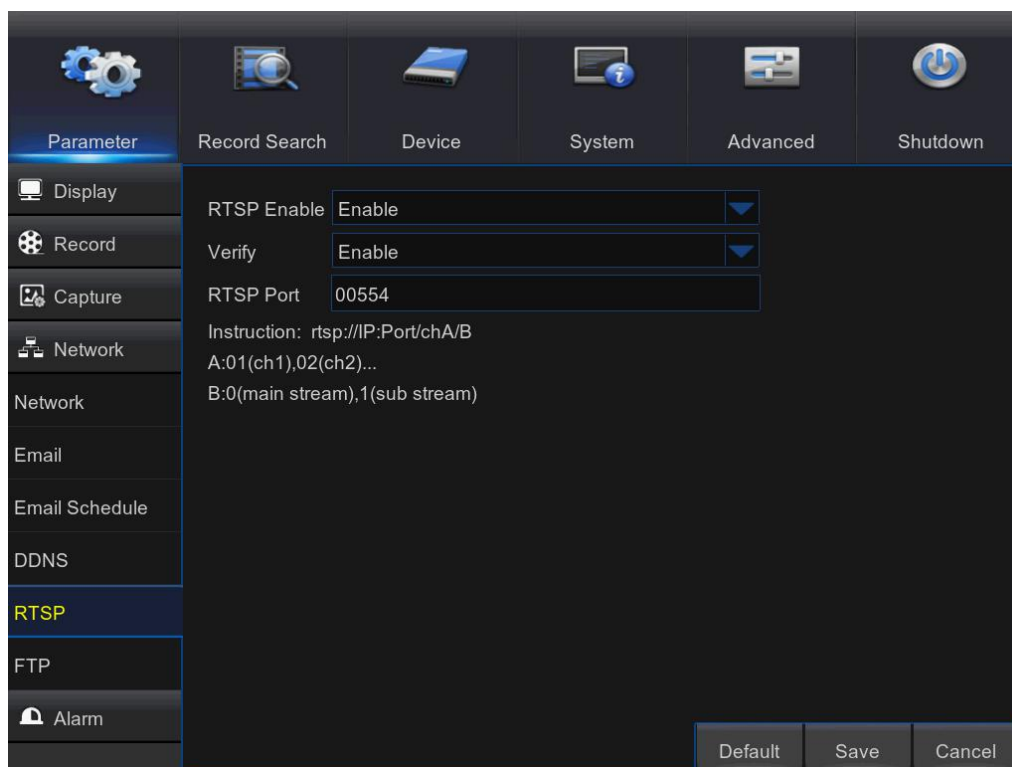
**Domain:** Enter the domain name you created on the DDNS service provider's web page. This will be the address you type in the URL box when you want to connect remotely to the WIRELESS NVR via PC. For example: dvr.no-ip.org.

**User/Password:** Enter the user name and password you obtained when creating an account on the DDNS service provider's web page.

After all parameters are entered, click **Test DDNS** to test the DDNS settings.

## 5.5.5 RTSP

The WIRELESS NVR can be remotely viewed via RTSP protocol.



**RTSP Enable:** Enable/Disable

**Verify:** Enable/Disable

**RTSP Port:** Default is 554, if the default port 554 is already taken by other applications, please change it.

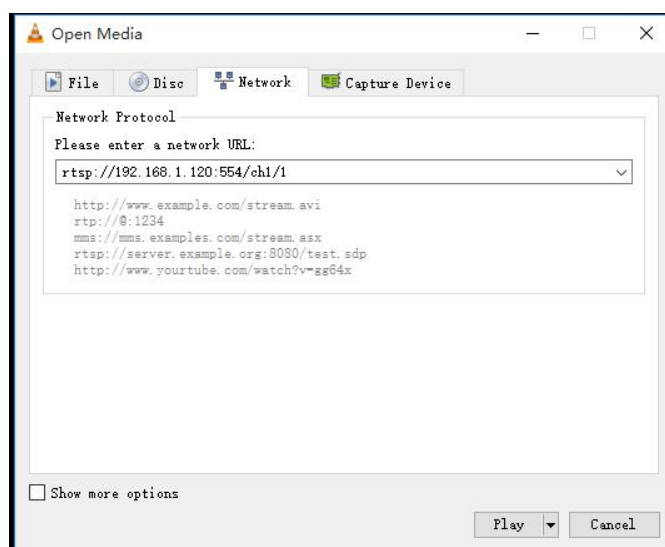
**Instruction:** rtsp://IP:Port/chA/B

**A:** 01(ch1), 02(ch2)....

**B:** 0(main stream), 1(sub stream)

For example, the WIRELESS NVR IP address is 192.168.1.120, and you want to view CH1 with mainstream, then the RTSP address will be: <rtsp://192.168.1.120:554/ch1/0>

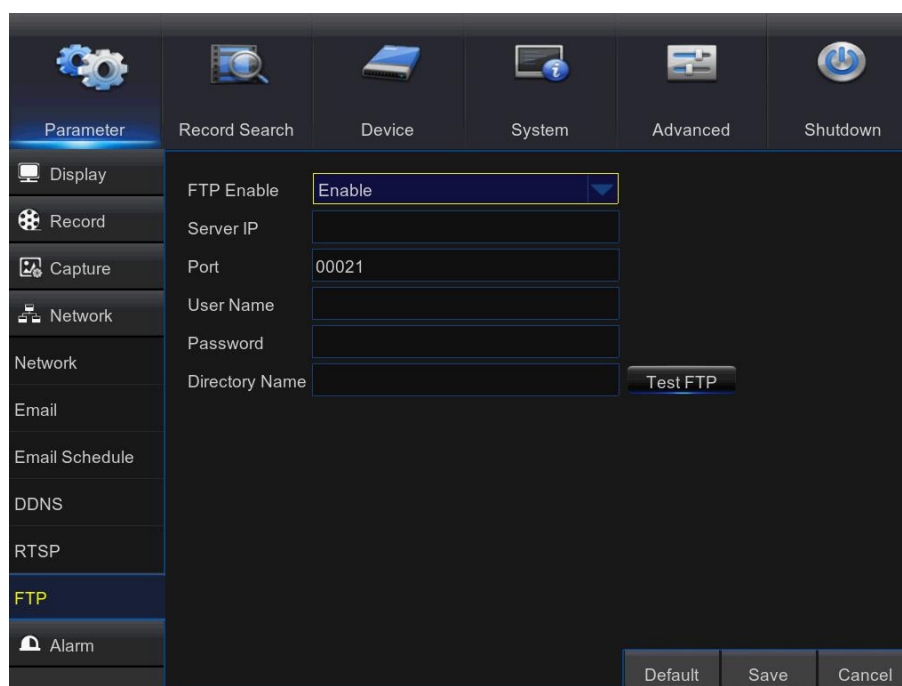




**Note:** RTSP user name and password is same with DVR user name, password and permissions. Follow the instruction to input IP and port to preview video.

## 5.5.6 FTP

This menu allows you to enable FTP function to view and load captured snapshots from WIRELESS NVR to your storage device over FTP.



**FTP Enable:** Enable the feature in WIRELESS NVR.

**Server IP:** Enter your FTP server IP address or domain name.

**Port:** Enter the FTP port for file exchanges.

**Name/ Password:** Enter your FTP server user name and password.

**Directory Name:** Enter the default directory name for the FTP file exchanges.

**Test FTP:** Click to test the FTP settings.

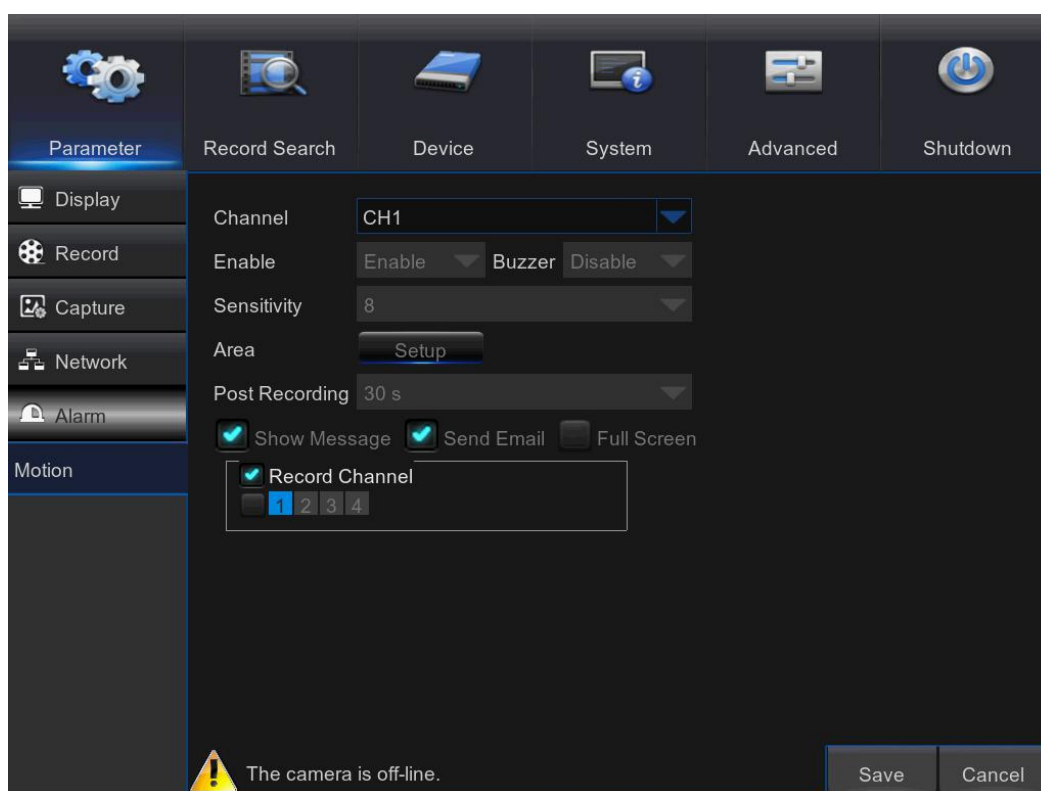
## 5.6 Alarm

In these section, you can configure the Motion Detection.

### 5.6.1 Motion

This menu allows you to configure motion parameters. The motion detection is pretty straight forward, the WIRELESS NVR simply compares one frame to another. A sufficient amount of difference is interpreted as motion. When the motion is detected, the system can be set to automatically initiate recording. In this menu you can select the channels where you want the motion detection recording to take place.

If you set the motion detection at a high sensitivity level ("8" is the most sensitive) then the frequency of false alarm events increases. If the sensitivity level is too low ("1" is the least sensitive), you might increase the risk that a significant motion event will not trigger the motion detection to record.



**Channel:** Select the channel you want to set the motion detection.

**Enable:** Enable or disable the function.

**Buzzer:** The WIRELESS NVR can use its internal buzzer to emit an alarm tone. You can set the buzzer duration in seconds when the motion is detected.

**Sensitivity:** Set the sensitivity level.

**Area:** To setup motion area, click **Setup**.

By default, the whole screen is marked for motion detection (red blocks). If you want to disable the motion detection on an area, you need to click the grid cursor and then drag the mouse to highlight the scope to unmark the area (transparent block). After setting is completed, right click the mouse button to return and click Save to make the area setup effective.



Motion Detection Area Setup

**Post Recording:** You can set how long after an event occurs that the WIRELESS NVR will continue to record. The recommended recording length is 30 seconds but it can be set higher up to 5 minutes.

**Show Message:** Check the box to display “**M**” icon on the screen when the motion is detected.

**Send Email:** You can let the WIRELESS NVR to send you an auto-email when the motion is detected.

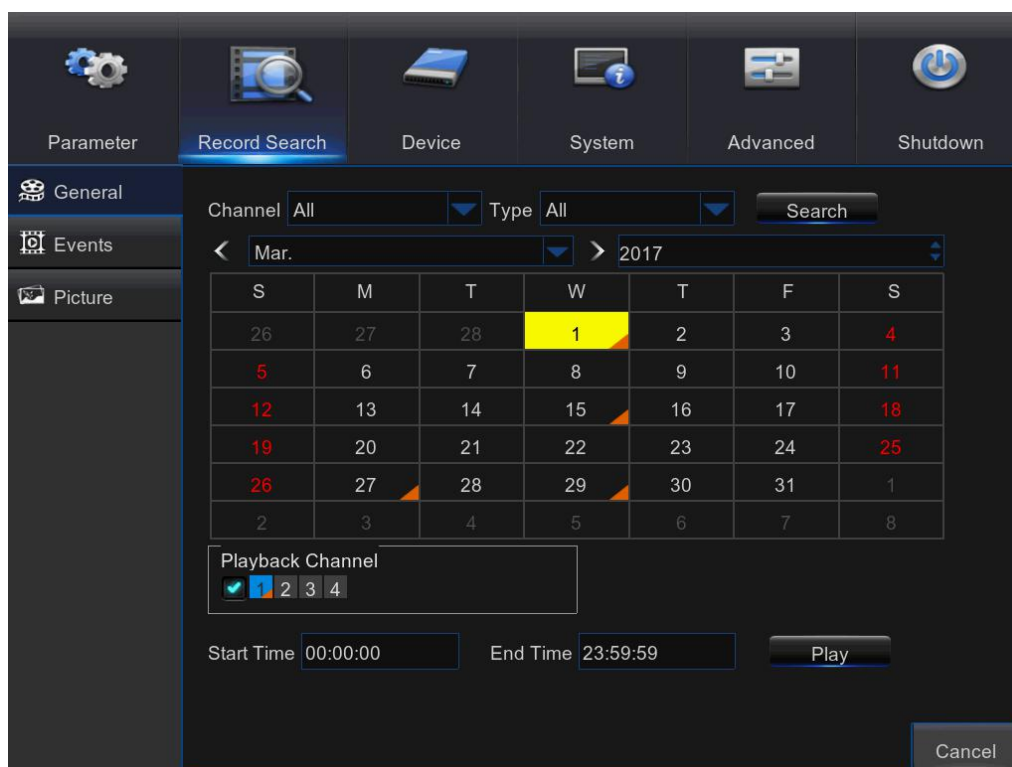
**Full Screen:** If this function is enabled and a motion is detected in a channel, you will see that channel in full screen.

**Record Channels:** Here you can select which channels you want to include to the motion detection. If the motion is detected, the recording will start immediately on those channels.

## 5.7 Record Search & Backup

This section allows you to search and playback the recorded videos based on recording type, channel, date and time parameters. You can also view and backup events and captured images.

### 5.7.1 General



1) Select the channel & the recording type (**All / Normal / Motion**).

2) Determine the recording date.

3) Click **Search**.

4) Select the recording from the table.

**NOTE:** Dates marked with orange triangles have video recordings.

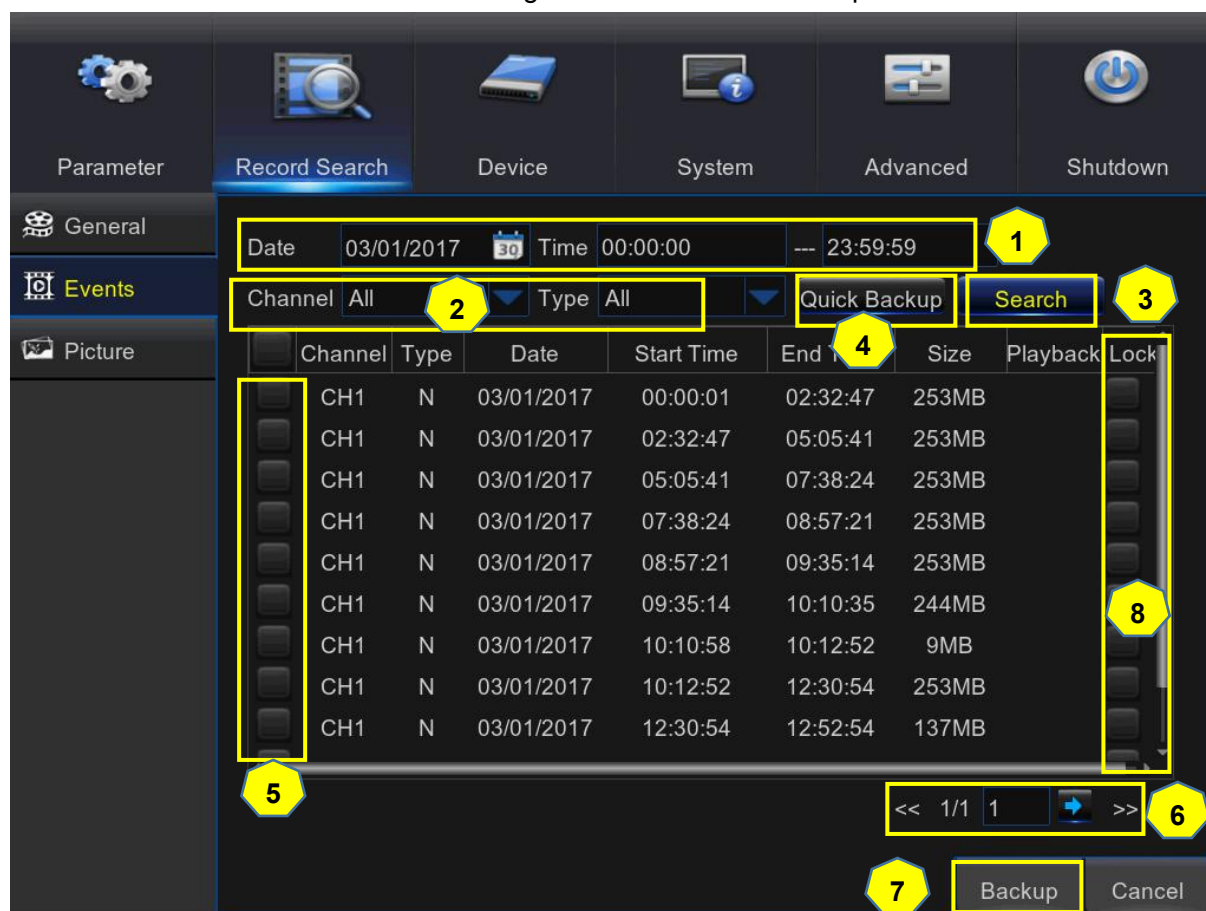
5) Select the channels you want to playback.

6) Modify the start time and end time if necessary and then click **Play**.

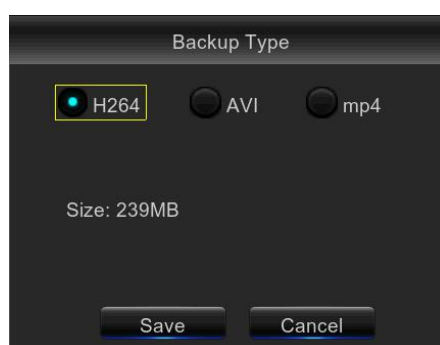
Enter the playback interface, to view [5.7.4 Playback Video Recordings](#)

## 5.7.2 Events

This section is used to check the recording file lists and make backup.



- 1) Select the recording **Date & Time**.
- 2) Select the **Channel** and **Type** (All / Normal / Motion).
- 3) Click **Search**.
- 4) If you want to make backup for all recording files you had searched, click **Quick Backup**.
- 5) If you want to make backup for individual files, select the recording list(s) from the table.
- 6) If you want to move to other page, click << or >> to move to previous or next page. Or input the number of page, then click ➡ to jump to the page.
- 7) After selecting the files, click **Backup** to start the backup. There are 3 kinds file formats for your backup files: original H.264, AVI and MP4. The total size of the backup files will be displayed, please make sure not to exceed the available capacity of your USB flash device.

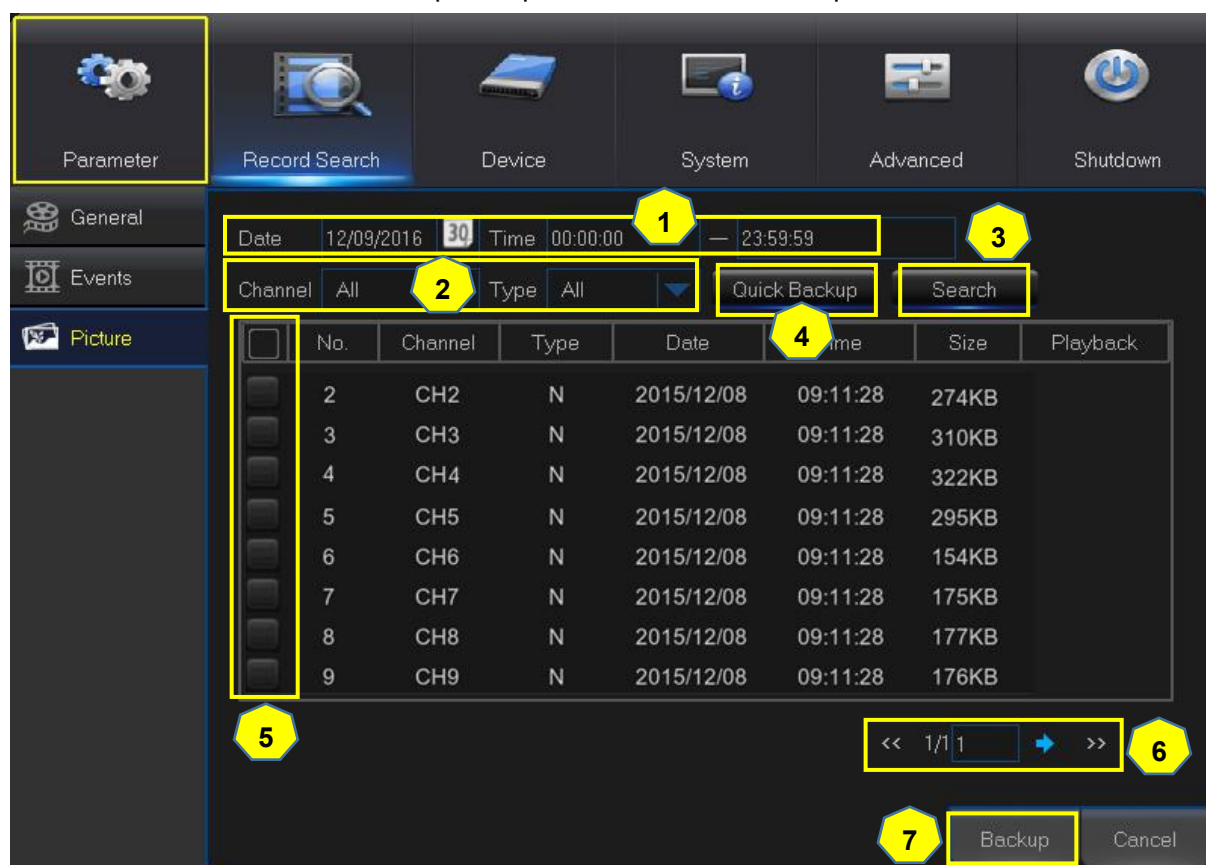


**Note:** Please make sure you have inserted your USB flash device to the WIRELESS NVR USB port before you want to make backup.

- 8) If you want to **Lock** the recoding files, tick the checkbox after the files. The locked files will be protected and unable to be overwritten if you had enable the HDD Overwrite function.

### 5.7.3 Picture

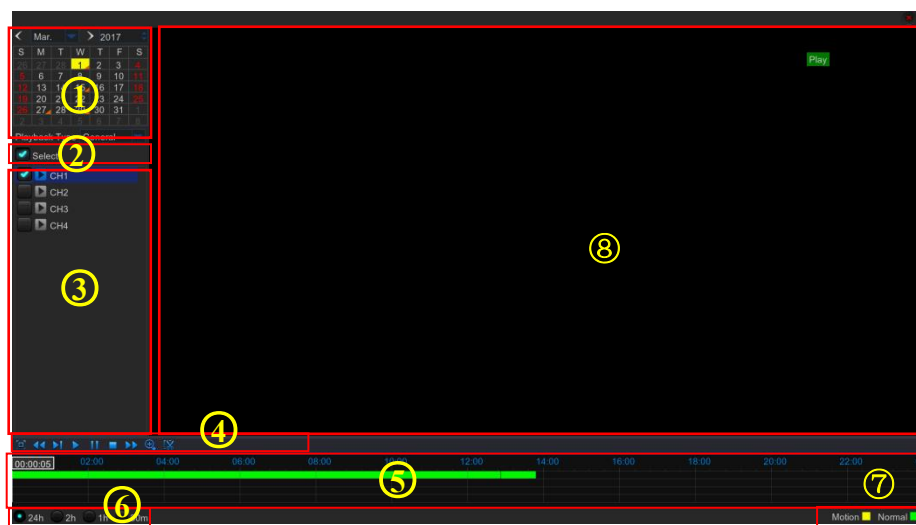
This section is used to view the captured pictures and make backup.









- 1) Select the recording **Date & Time**.
- 2) Select the **Channel** and **Type** (All / Normal / Motion / Manual).
- 3) Click **Search**.
- 4) If you want to make backup for all captured you had searched, click **Quick Backup**.
- 5) If you want to make backup for individual files, select the picture lists from the table.
- 6) If you want to move to other page, click << or >> to move to previous or next page. Or input the number of page, then click ➡ to jump to the page.
- 7) After selecting all files, click **Backup** to start the backup.




**Note:** Due to the system limitation, only max. 5000 captured pictures will be searched & shown.

## 5.7.4 Playback Video Recordings



1. **Recording Calendar:** Dates marked with orange triangles have recordings.
2. **Playback Type:** Select the playback type among **General**, **Events**, **Picture**
3. **Channels:** Check the channels to playback.
4. **Playback Control Bar**


	Full Screen
	Fast Rewind: x2, x4, x8 and x16
	Slow Play: 1/2, 1/4 and 1/8 speed
	Play & Pause
	Pause, Play frame by frame
	Stop

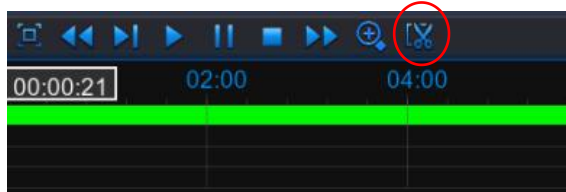
	Fast Forward, x2, x4, x8 and x16
	Digital Zoom: Click to zoom in
	Trim Video: view <a href="#">5.7.4.2 Trim Video</a>

5. **Time Bar:** The color indicates the video recording type:
  - Motion recording (**Yellow**)
  - Normal recording (**Green**)
6. **Time Frame:** Select Playback timeline. View [5.7.4.3 Time Frame](#)
7. **Recording Type Indicator:** Motion, Normal.
8. **Recording Playback Screen:** Video recordings from selected channels.

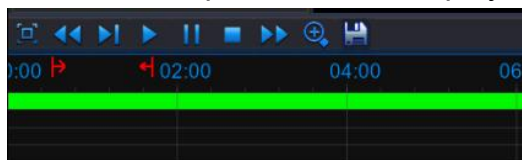
### 5.7.4.1 Trim Video


Use this function if you need to backup just a certain section of the video recording.

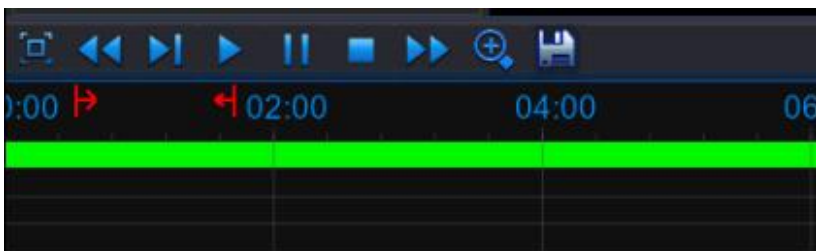
- 1) Connect a USB flash drive to the WIRELESS NVR.
- 2) Double-click on the channel (to display in full screen during video playback) that you wish to backup.
- 3) Click on the Time Bar to mark the beginning of the video footage you wish to backup.
- 4) Click  to start selecting the footage.



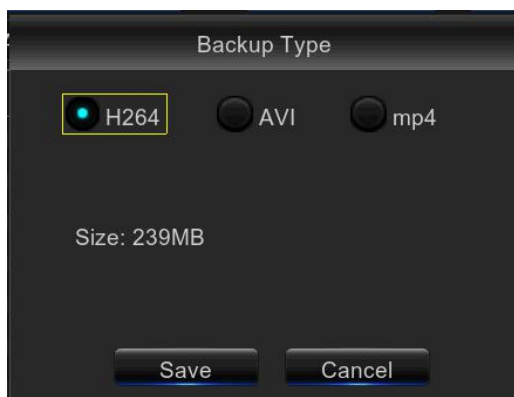
- 5) Click on the Time Bar to mark the end of the video footage you wish to backup. The marked up area is now displayed within the red arrows.



- 6) Click  to save the footage.



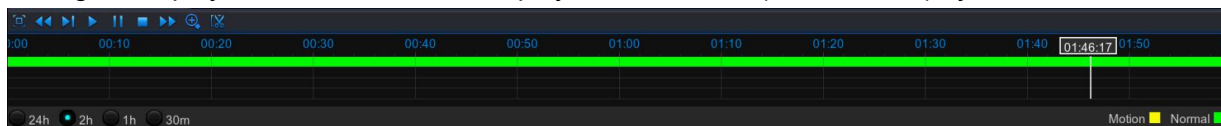
- 7) A video type selection message appears. Select the file format and click **Save**.





## 5.7.4.2 Time Frame

During video playback, the time bar is displayed in 24 Hours (00:00~24:00) by default.



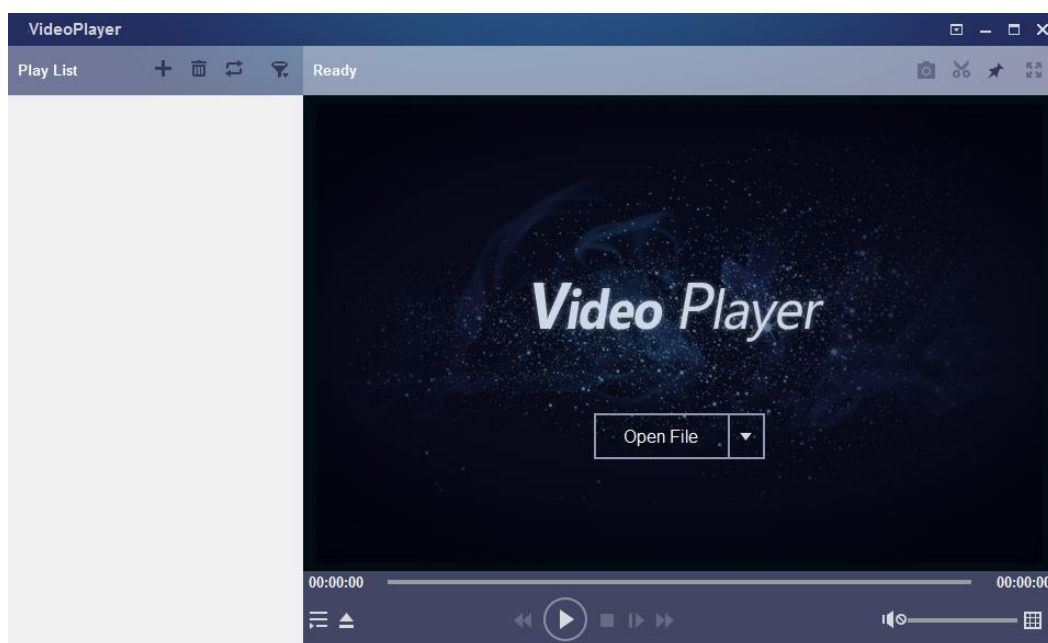
You can shorten the time bar to be displayed in 2 Hours, 1 Hour or 30 Minutes in order to make an accurate position to the time bar.



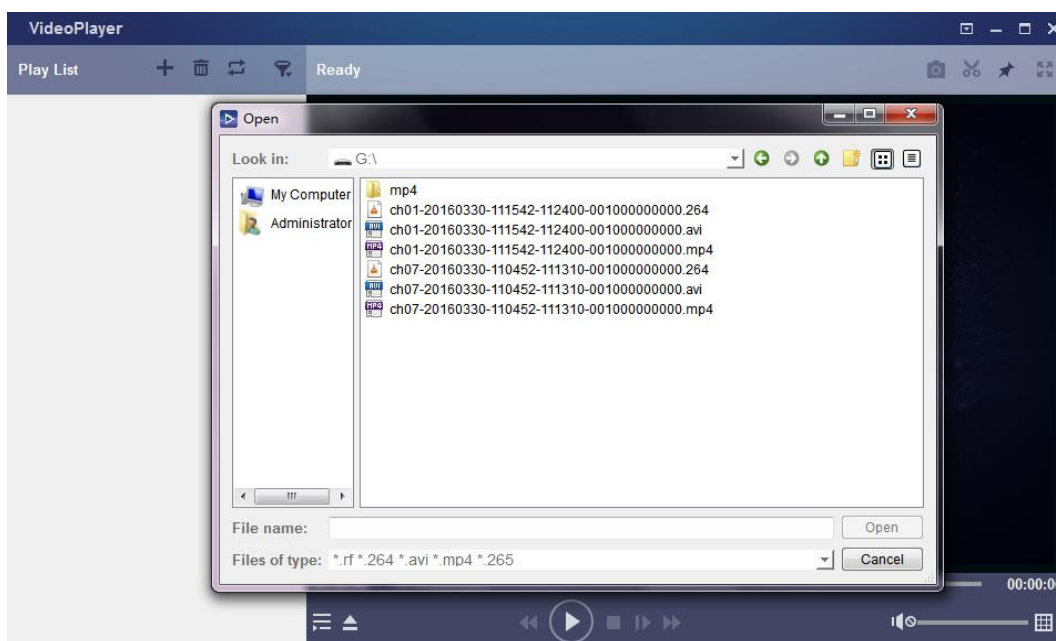
## 5.7.5 Play Backup Files

This section will help you to play the backup files.















- 1) Install the Video\_Player software in the CD and run.



- 3) Copy the backup files to your computer.
- 4) Click “+” or “Open File” button to add files. It supports to play avi, mp4, 264 files.



## Function Description:


-  Play: Click to play file
-  Pause: Click to pause.
-  Stop: Click to stop playback.
-  Frame Forward: step forward by frame
-  Slow forward: Click to play at 8x,4x,2x,1x,1/2,1/4,1/8,1/16 speed.
-  Fast forward: Click to play at 16x,8x,4x,2x,1x,1/2x,1/4x,1/8x speed
-  Open file/Open Directory
-  Expand/pack up the list.
-  Screenshot: Save path: C:\Users\Administrator\VideoPlayer\picture
-  Cut: Save path: C:\Users\Administrator\VideoPlayer\video
-  Full screen display
-  Never on top
-  Always on top
-  On top during playing


 Adjust volume

 Window Division

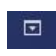
 1/4/9/16 channels optional.

 Add folder or file.

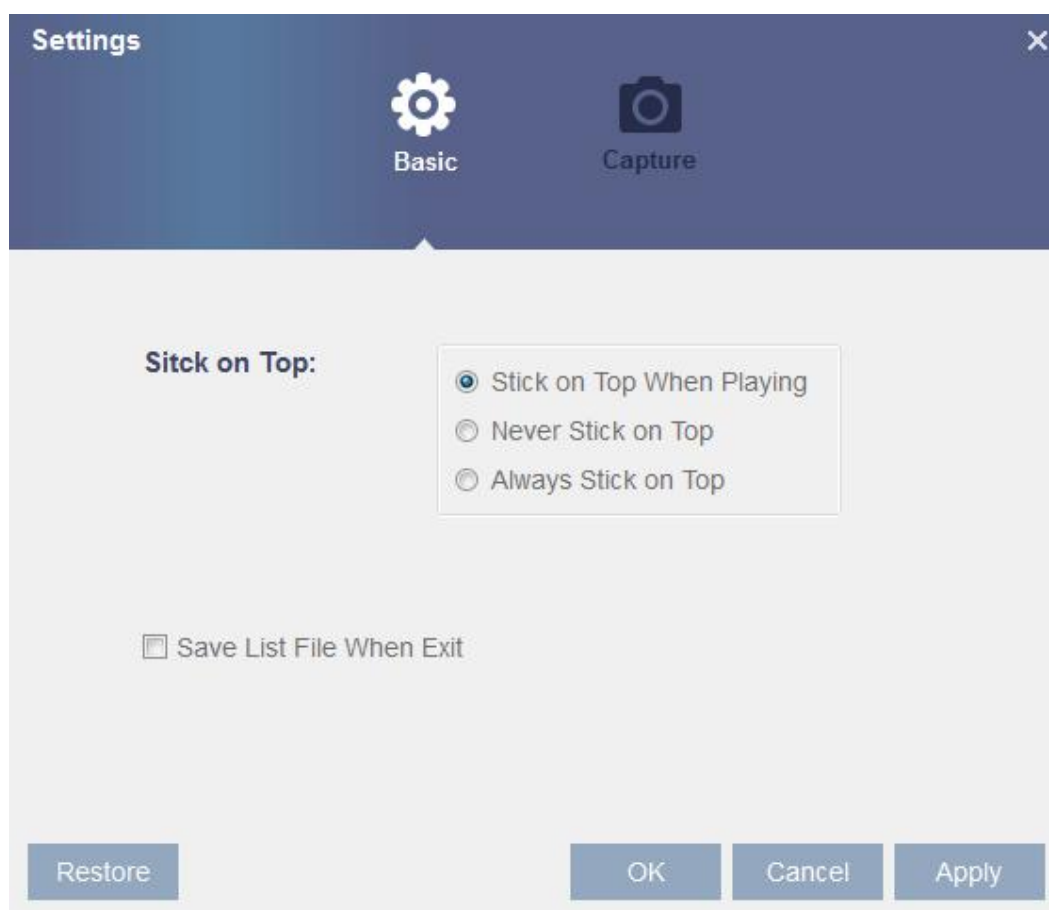
 Playback mode, Single, Order, Repeat one, Repeat ALL are optional

 Delete all files in the list.

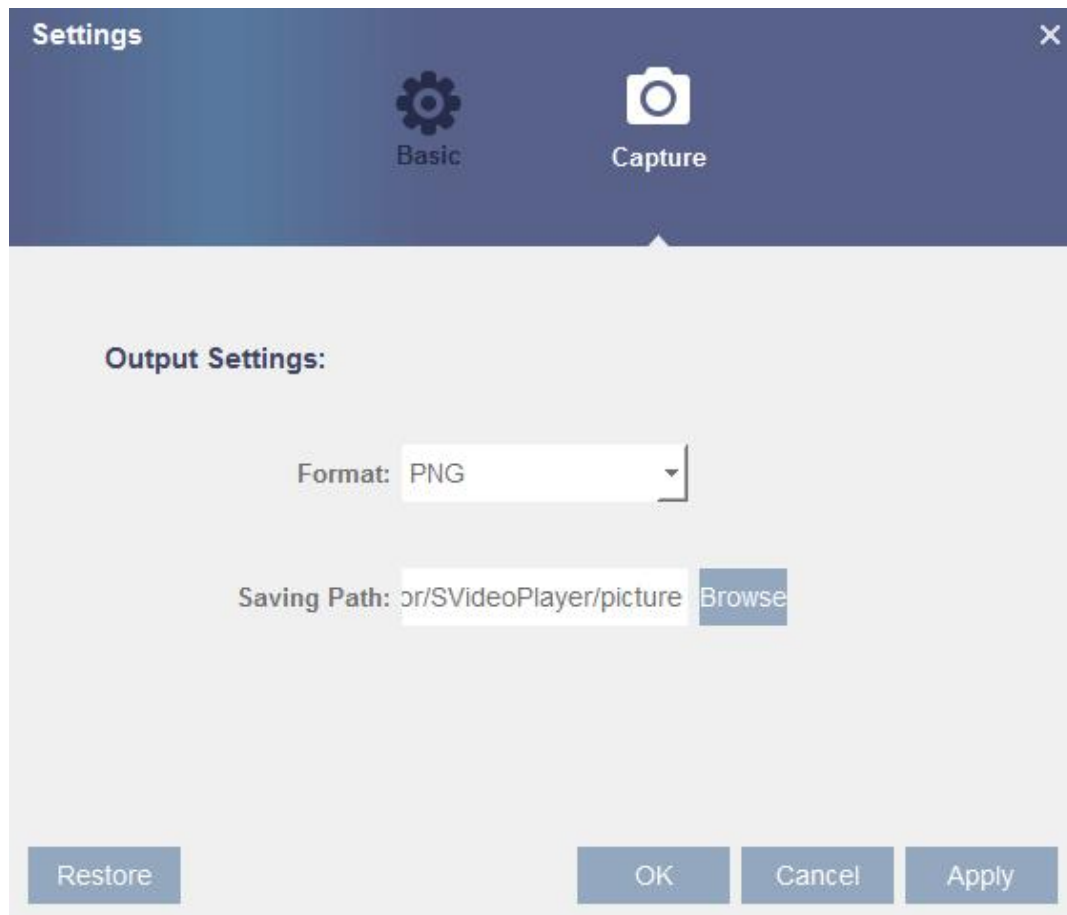
 Search File

 Language/Settings

Basic Settings: Set on-top mode



Capture Settings: Set the path to save images

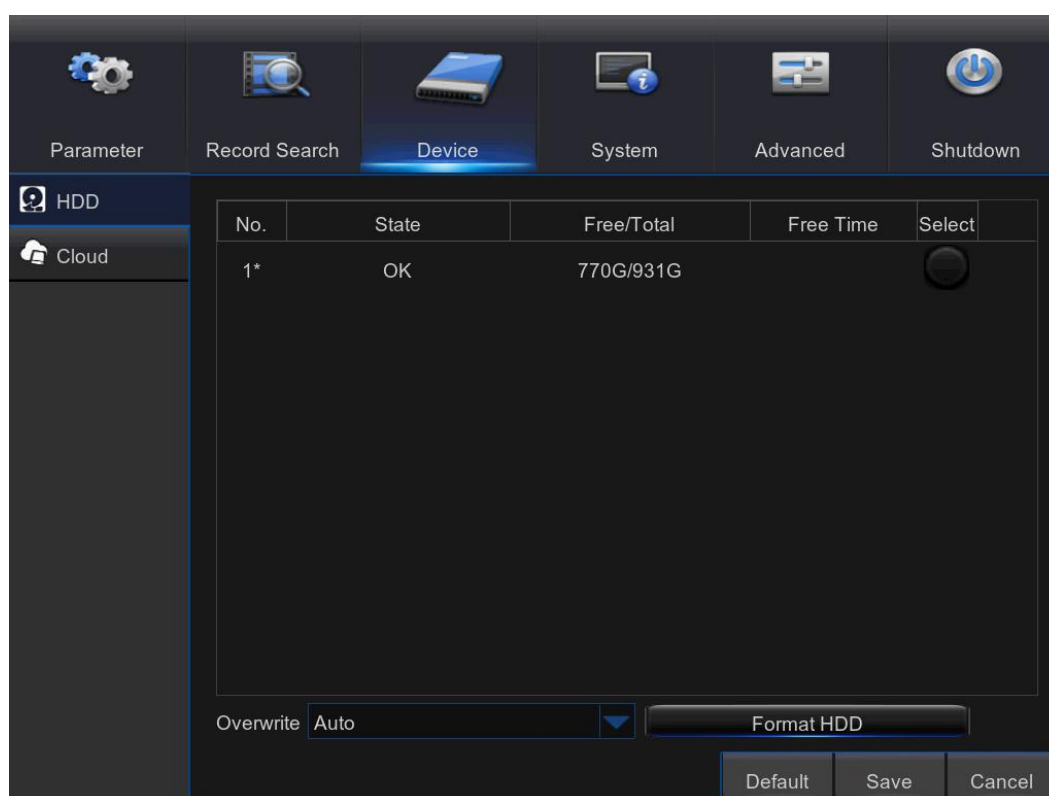


## 5.8 Device

In this section, you can configure the internal HDD.

### 5.8.1 HDD

This menu allows you to check & configure the internal HDD that the WIRELESS NVR uses for saving the recordings. You need to format the HDD only at the first startup and if you replace the HDD.



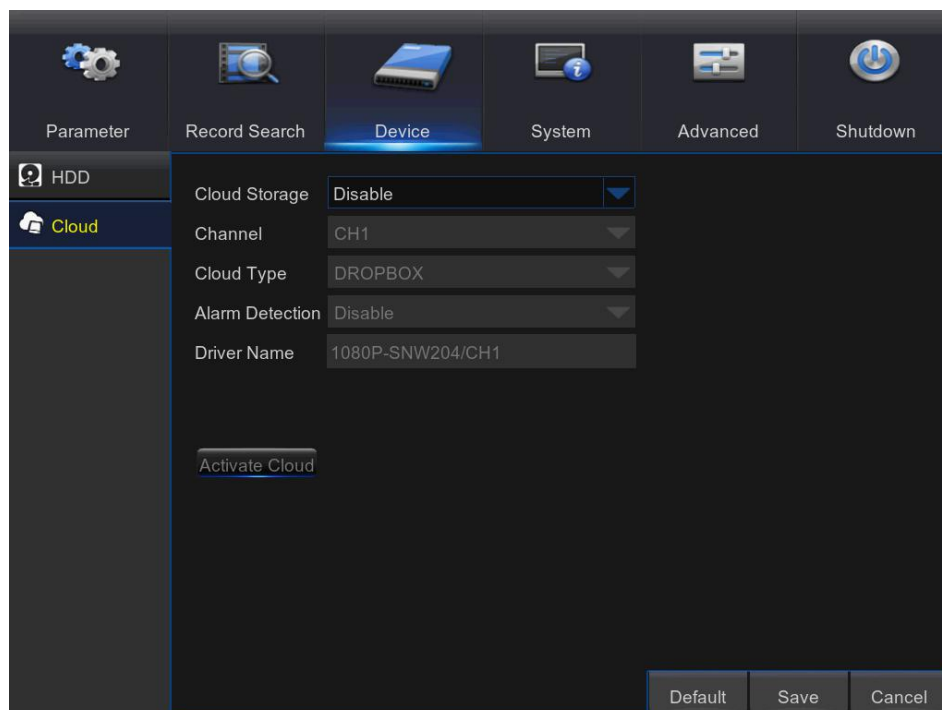
**Format HDD:** Select the HDD you want to format and then click **Format HDD**. To start formatting, you need to enter your user name and password and then click **OK** to confirm to continue formatting.

**Overwrite:** Use this option to overwrite the old recordings on the HDD when the HDD is full. For example, if you choose the option 7 days then only the last 7 days recordings are kept on the HDD. To prevent overwriting any old recordings, select **Disable**. If you have disabled this function, please check the HDD status regularly, to make sure the HDD is not full. Recording will be stopped if HDD is full.

This function will help to check the HDD health. Please note that due to the system limitation, your WIRELESS NVR may not have this function.

## 5.8.4 Cloud Storage

This menu allows you to see what is happening on your camera site anytime, It can upload the captured pictures to Dropbox at normal time, or when motion detection happens.



**Cloud Storage:** Enable to allow cloud settings

**Channel:** Select the channels where you want to upload the snapshots to Dropbox

**Cloud Type:** Only Dropbox cloud storage is supported currently

**Alarm Detection:** Enable if you want to upload snapshots to Dropbox when the camera detects a motion

**Drive Name:** Enter the cloud storage name for your WIRELESS NVR

**Activate Cloud:** Click to activate the function. An activation email will be sent to the Receiver email account

### Process to start uploading the snapshots

- 1) To use the cloud backup, you need to register your email first. For the detail, please refer to the page 25.
- 2) Register an account on <https://www.dropbox.com/>.
- 3) Configure network to ensure DVR is under network.
- 4) **Configure Cloud:** Enable Cloud and set the channel. Enable Motion Detection to have it capture pictures when motion detection happens.
- 5) Drive Name refers to the name created in the folder of Dropbox and the name can be defined by the user, e.g. CloudDVR000. The folder is to store captured pictures from the DVR.
- 6) Click [**Active Cloud**] to activate Cloud and Email for the user verification will

be sent. Click the link in the email and then log in to your dropbox account, and click permit. DVR cloud storage function will be activated. If you have logged in your dropbox account before Cloud storage activation, then no need to relogin. Just click Permit to complete the activation. Please finish the activation within 3 minutes. After activation is completed, you can use the Cloud storage function.

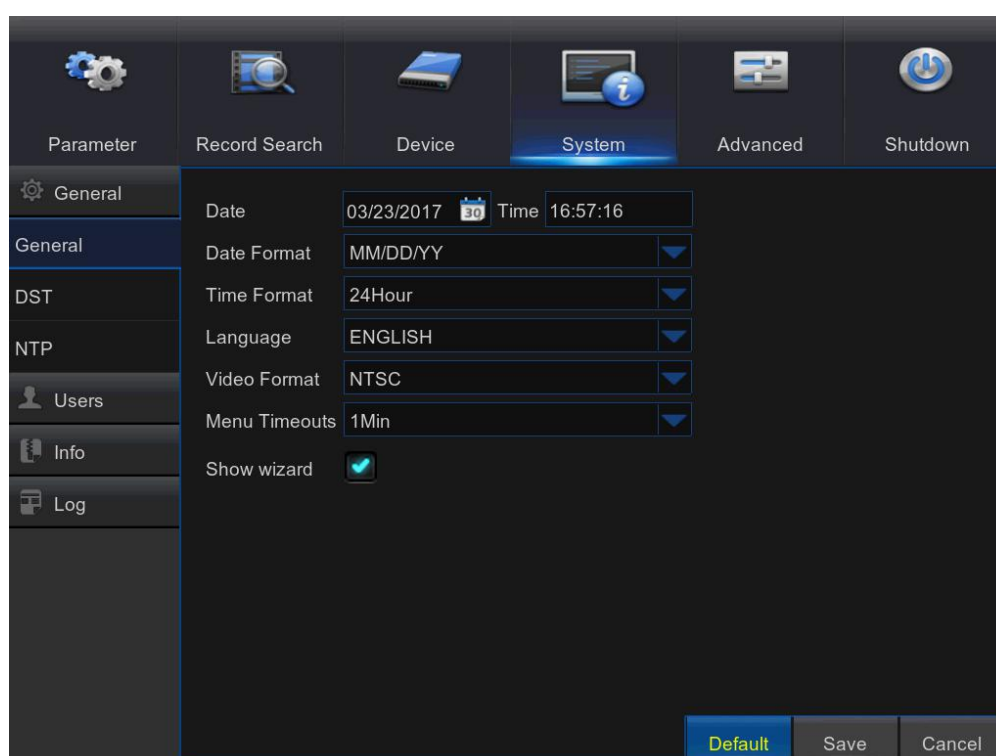
7) Click the icon at the upper-left of dropbox account interface to view the folder made in the 5th step.

8) Open the Dropbox folder to view the DVR captured pictures.

## 5.9 System

You are able to configure general parameters of the system, such as date and time, OSD language, menu timeouts, DST, NTP, User Management, check system information & system log here.

### 5.9.1 General



**Date/Time:** Enter the date and time manually.

**NOTE:** For date/time automation over the Internet, enable NTP.

**Date Format:** Set the date format here.

**Time Format:** Set the time format here.

**Language:** Choose the OSD language.



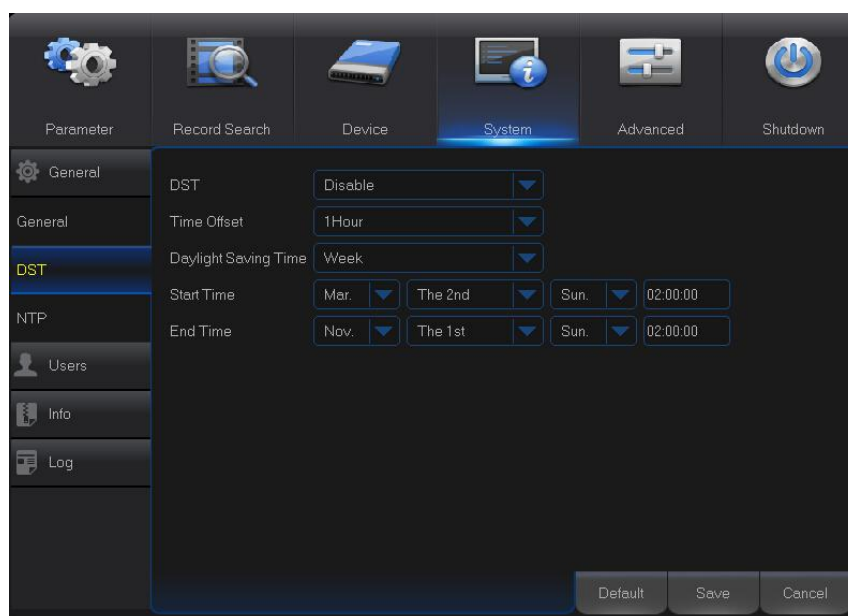
**Video Format:** Choose the video format between NTSC and PAL. If the WIRELESS NVR's picture is flickering or has only black screen, it may be that the video format is not correct.

**Menu Timeouts:** Set the time out the WIRELESS NVR will exit the menus when they are not in use.

**Show Wizard:** Check if you want the Startup Wizard to reappear each time you start up the WIRELESS NVR.

## 5.9.2 DST

DST stands for Daylight Savings Time.



**DST:** Enable if Daylight Saving Time (DST) is observed in your region

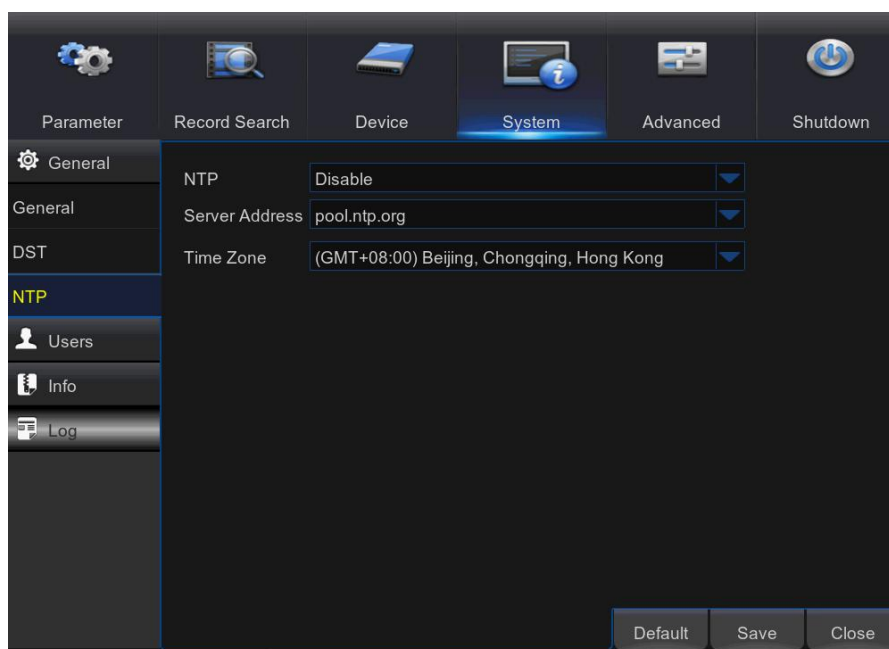
**Time Offset:** Select the amount of time to offset for DST

**Daylight Saving Time:** Choose to set the daylight saving time in weeks or in days

**Start Time/End Time:** Set the start time and end time for daylight saving

### 5.9.3 NTP

NTP stands for Network Time Protocol. This feature allows you to synchronize the date and time automatically on the WIRELESS NVR over Internet. Therefore the WIRELESS NVR needs to be connected to the Internet.



**NTP:** Enable if you want the WIRELESS NVR to update the date and time automatically.

**Server Address:** Select the NTP (Network Time Protocol) server.

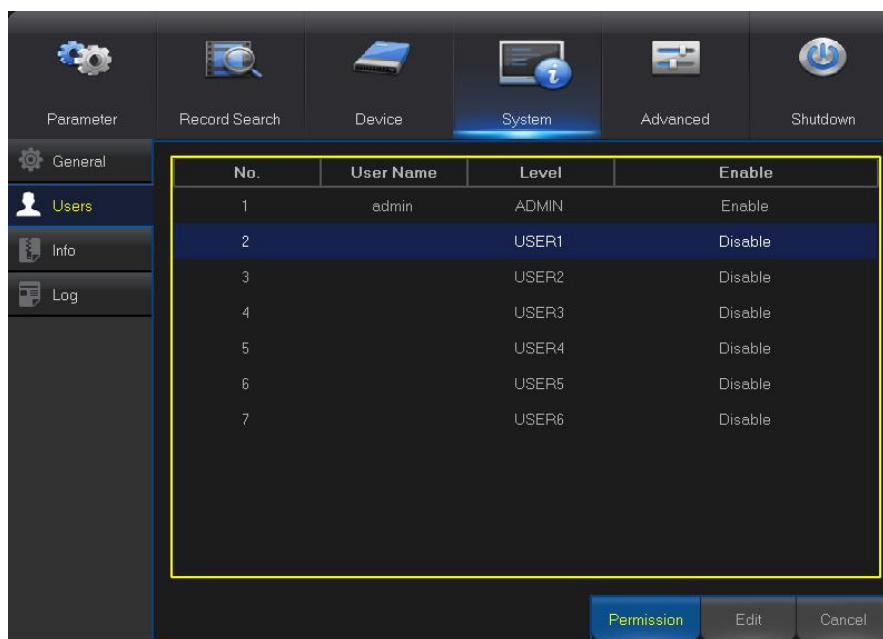
**Time Zone:** Select the Time Zone in your location.

**Update Time:** Click here to update the system date and time immediately.

**Note:** When NTP function is enabled, system will update the system time at 00:07:50 every day, or every time when the system is started up.

## 5.9.4 Users

This menu allows you to configure the user login information.



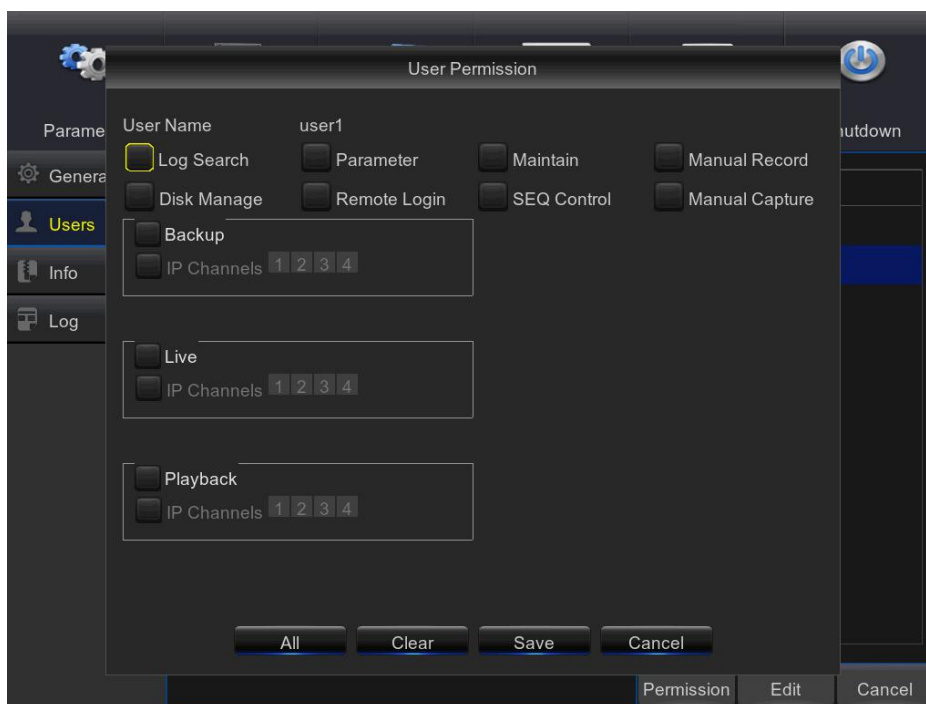
**Edit:** To enable/disable the user account, modify the user name and password, click on the user account you wish to edit, then click **Edit**.

The 'User Edit' dialog box contains the following fields and controls:

- User Name:** A text field with the value 'test1'.
- User Enable:** A dropdown menu currently set to 'Enable'.
- Password Enable:** A dropdown menu currently set to 'Enable'.
- Password:** A text field with masked characters (dots).
- Confirm:** A text field with masked characters (dots), highlighted with a yellow border.

At the bottom of the dialog, there are three buttons: 'Default', 'Save', and 'Cancel'.

**Permission:** To modify user access permissions, click on the user account you wish to modify, then click **Permission**. The user in Admin level has all permissions to the system. After modify the permissions, click **Save** to save the modifications.



### 5.9.5 Info

This menu allows you to view the summary of the system, channel information & record information



**Device Name:** Enter the desired name for your WIRELESS NVR. The name can include both letters and numbers.

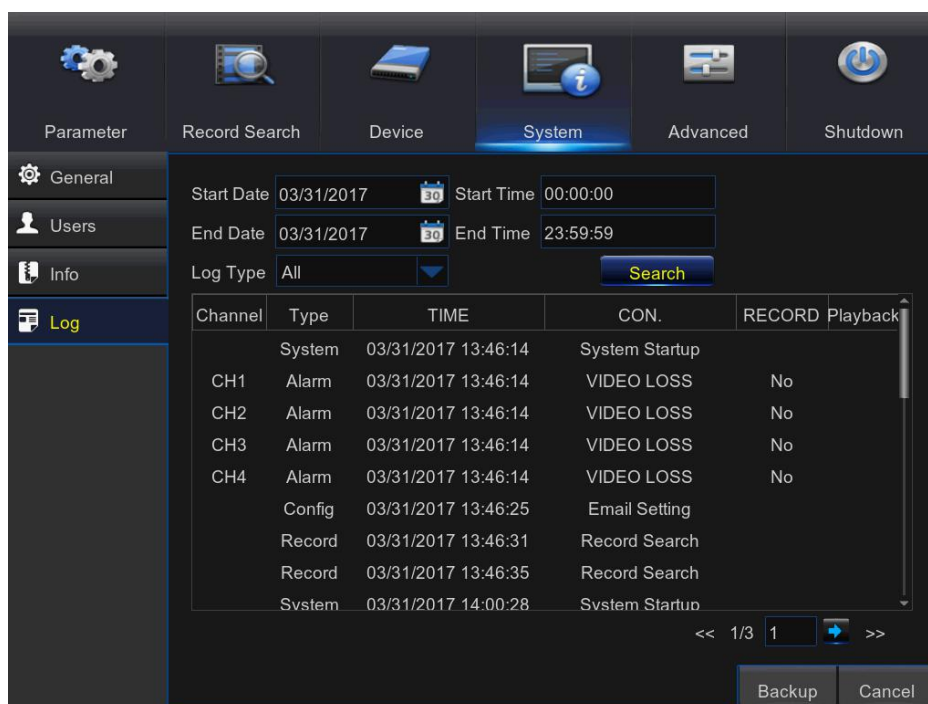
**Device ID:** Enter the desired ID for your WIRELESS NVR. The device ID is used to identify the WIRELESS NVR, and can only be composed of numbers, and cannot be the same with other IDs when multiple WIRELESS NVR are connected in the same network.

**MAC Address:** Display the MAC address of the WIRELESS NVR. When multiple WIRELESS NVRs are connected to the same network, each WIRELESS NVR must have a unique MAC address to ensure that the WIRELESS NVR can connect to the network.

**Note:** If your WIRELESS NVR support P2P function, you will find a QR code in the info page. You can scan this QR cord with mobile app to remote access this WIRELESS NVR, view more on [Chapter 7 Remote Access via Mobiel Devices](#).

## 5.9.6 Log

This menu allows you to view a list of events of system operation.



- To search for a log, enter the start time/end time to the respective fields and click **Search**.
- To display log details, double-click on the item.
- To backup a log entry, connect an external USB disk to the WIRELESS NVR, click on the log event and click **Backup**.

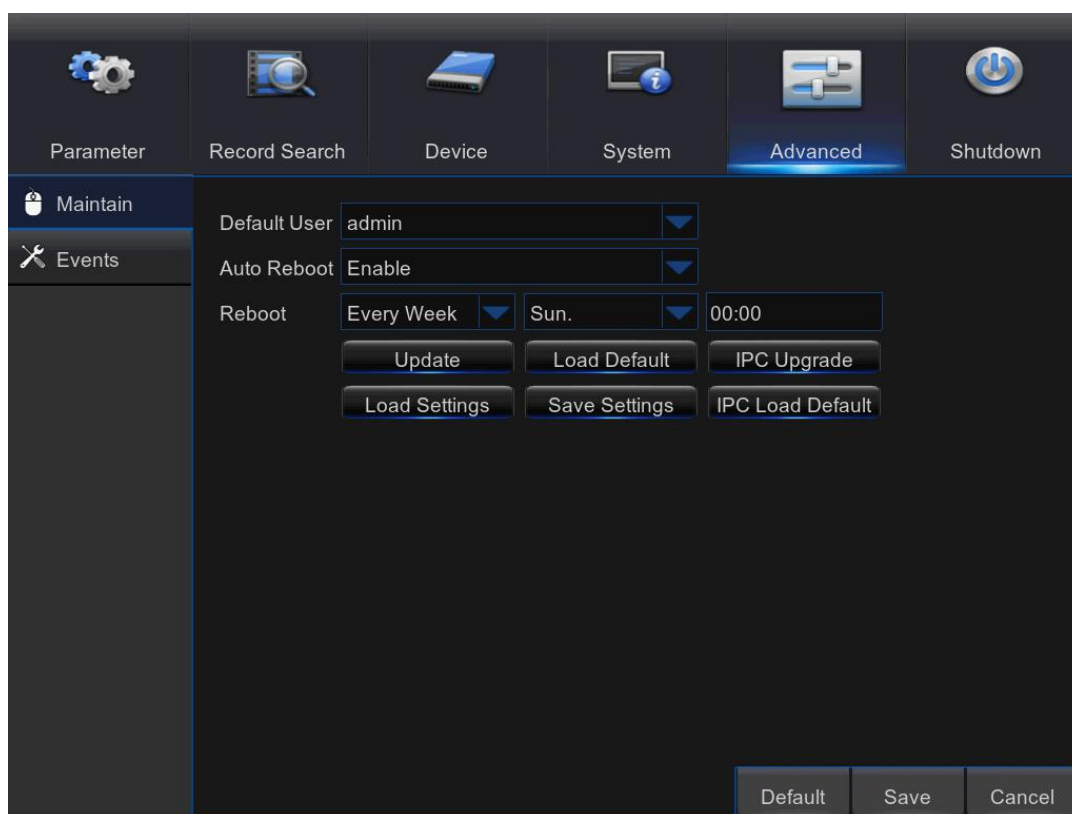
**Log Type:** Select the log type.

**Start Time/End Time:** Specify the start and end date/time of the logs you want to review and/or save on an external USB storage device. Click **Search**. The logs will be listed on the table.

## 5.10 Advanced

This menu allows you to configure automatic system maintenance, load factory defaults, update the firmware settings, upgrade the IPC, etc.

### 5.10.1 Maintain



**Default User:** If you want to log in to the WIRELESS NVR automatically for live view after each startup, then only administrator user account can be set for auto login.

**Auto Reboot:** Set enable to reboot the WIRELESS NVR based on a schedule.

**Reboot:** Set the rebooting schedule based on day, week, or month.

**Update:** Click to load the update file and then upgrade the firmware. Please do NOT power off the WIRELESS NVR or remove the USB during the upgrading.

**Load Settings:** Select this option to import the setting that you have saved earlier, using the Save Settings function.

**Load Default:** Use this feature to restore the factory default settings of the WIRELESS NVR. It is recommended to load defaults for all options, after upgrading the firmware.

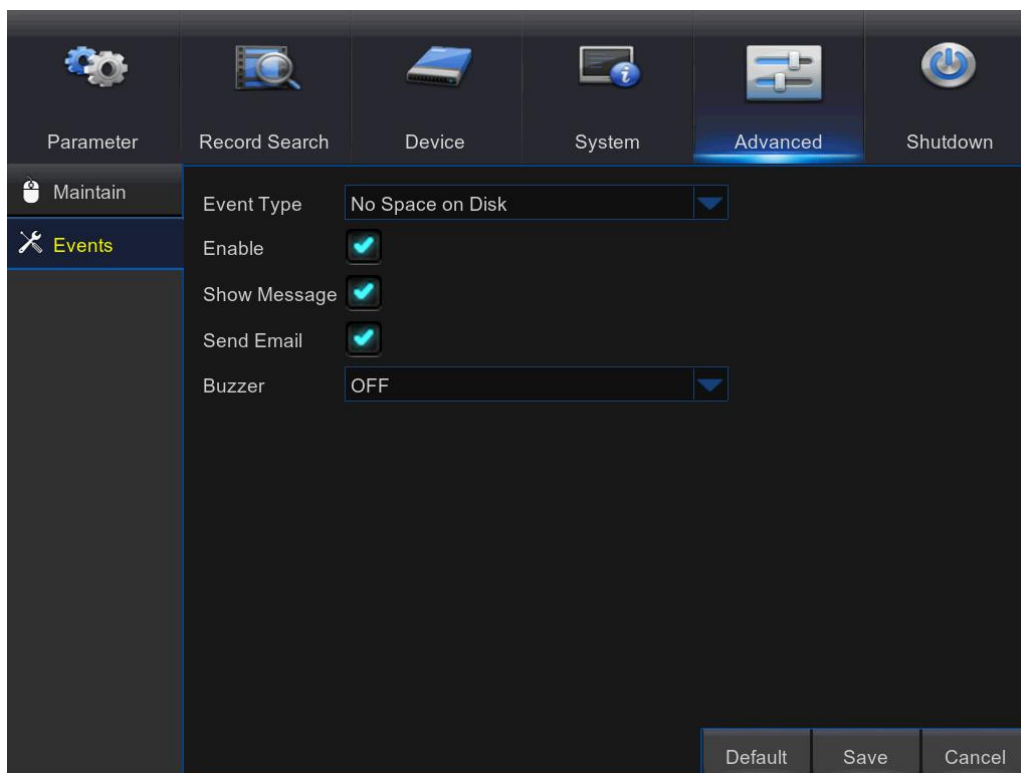
**Save Settings:** Select this option to save the WIRELESS NVR current settings, such as the video recording settings, network configurations, and etc. to the USB device.

**IPC Load Default:** Use this feature to restore the factory default settings of IP cameras.

**IPC Upgrade:** To upgrade IP cameras firmware. Some IP cameras may not support this feature.

## 5.10.2 Events

This menu allows you to set the type of events that you want the WIRELESS NVR to inform you.



**Event Type:** Select the event type. Options are:

- **Disk Full:** When HDD is full.
- **Disk Error:** If HDD is not detected properly.
- **Video Loss:** If camera is not detected properly.

**Enable:** Check the box to enable the monitoring of the event.

**Show Message:** Check the box to display a message on the screen when Disk Full, Disk Error, or Video Loss event happens.

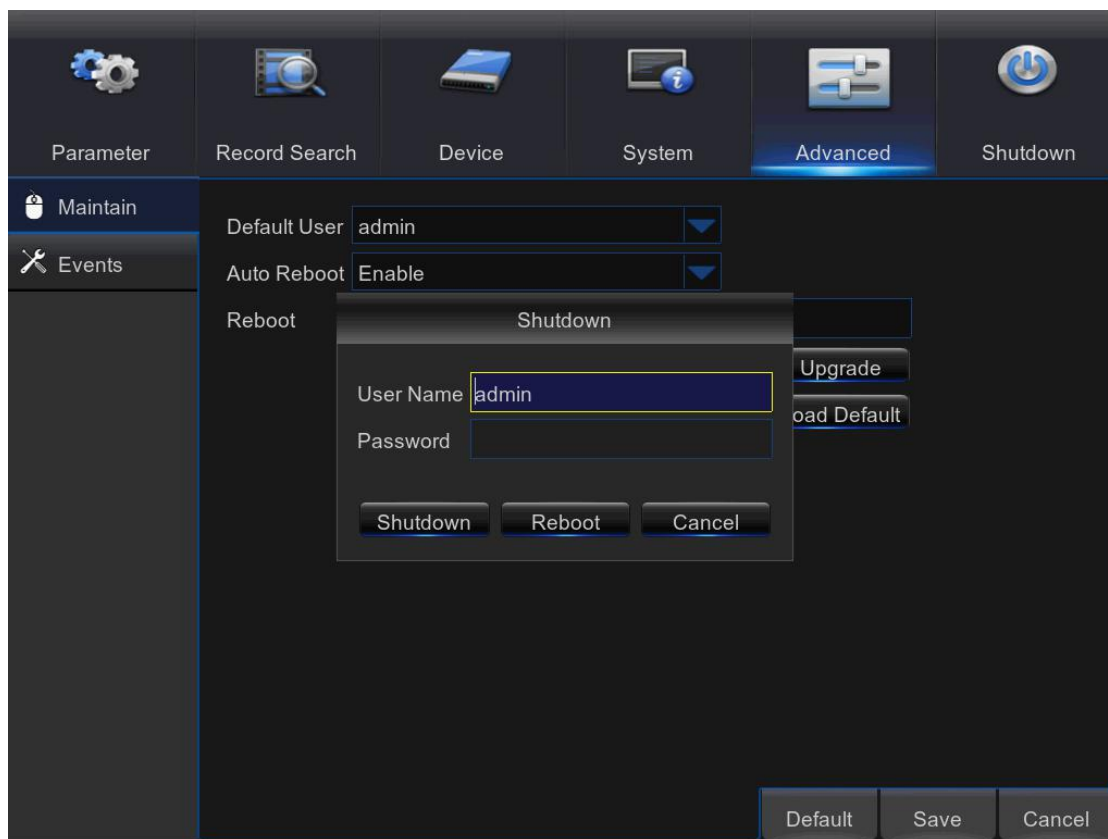
**Send Email:** Let the WIRELESS NVR to send you an auto-email when an event occurs.

**Buzzer:** Set the buzzer duration when the event occurs (Off/10s/20s/40s/60s). To disable buzzer, select **OFF**.



## 5.11 Shutdown

Manually turn off or reboot the WIRELESS NVR.



You will need to input your user name and password to complete the operation.

## Chapter 6 Remote Access via Web Client

Use the Web Client to remotely access your WIRELESS NVR at any time via a PC. Before you access the Web Client, you need to ensure that the network settings of the WIRELESS NVR are configured properly. The most convenient and easiest way is if you have set the WIRELESS NVR a static IP address (please see [“5.5.1 Network”](#)). It means you only need to open the web browser on your PC and type in the static IP address you have set on the WIRELESS NVR. However, if the IP address of the WIRELESS NVR is assigned by a DHCP server (see [“5.5.1 Network”](#)), then it means that each time you reboot the WIRELESS NVR, the IP address changes. In this case, ask if your ISP can provide you a static IP address. If not, then configure the DDNS service. See the network settings in [“5.5.4 DDNS”](#).

### System Environment Requirements

The minimum requirements for hardware and OS required to run Web Client are given as below.

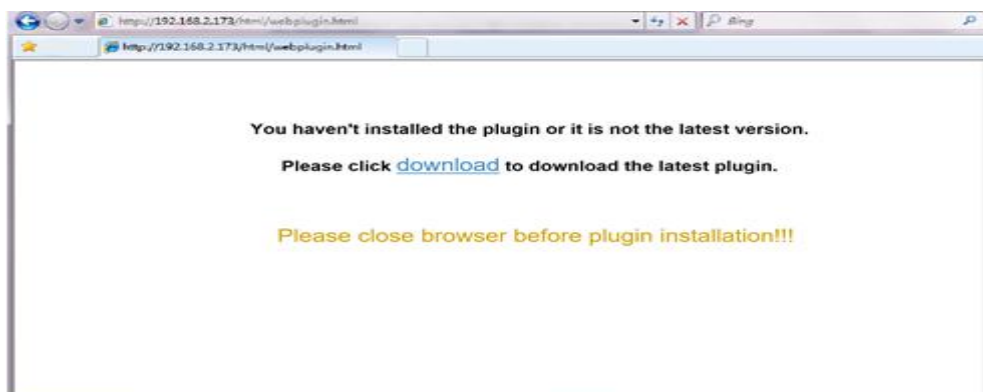
Item	Minimum	Recommended
CPU	Intel i3	Intel i7 or higher
RAM	4G or more	8G or more
Hard Drive	500G or more	1000G or more
Display RAM	2G or more	4G or more
Display Resolution	1280*1024	1920*1080
OS	Windows® Vista, Windows® 7 ,Windows® 8 Mac OS X® 10.9 and above	
DirectX	DirectX 11	
Direct3D	Acceleration Function	
Ethernet Adapter	10/100M Ethernet Adapter	
IE	Microsoft Internet Explorer (Ver. 11,10,9,8)	
Mozilla Firefox	43.0.4 or above	
Google Chrome	V44 or below	
Mac Safari	5.1 or above	

## 6.1 Web Plugin Download and Installation

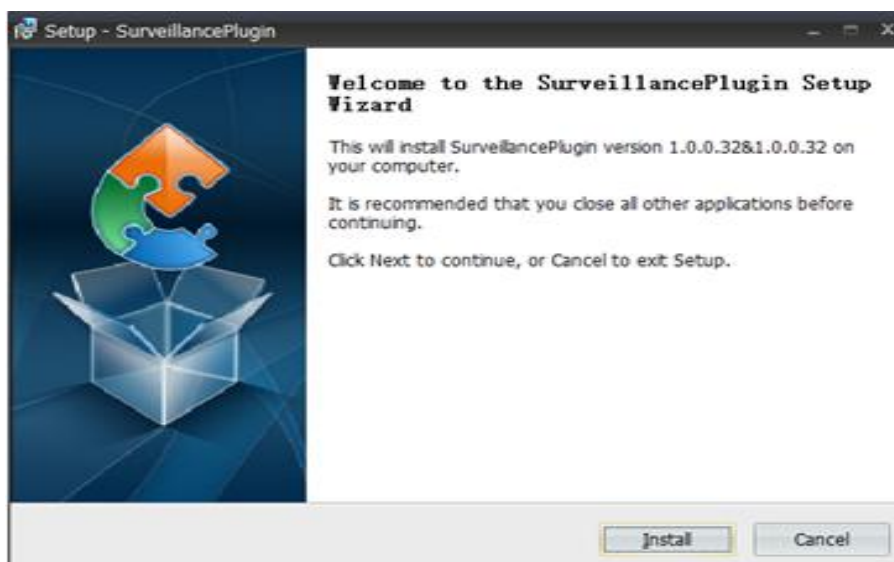
To access the Web Client, do the following:

### For IE/Chrome/Firefox:

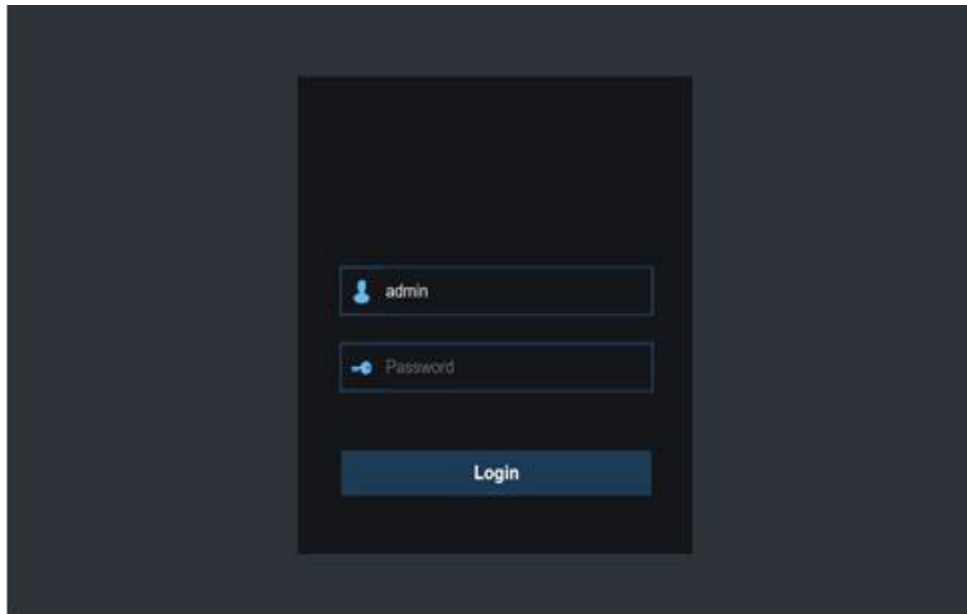
- 1) Launch the explorer on your PC and enter the WIRELESS NVR static IP address or DDNS domain name (Host Name) you have set on WIRELESS NVR in the URL box.



- 2) For the first time you run the web client, system will require to install the web client plugin. Click [download](#) to download the plugin and install to your computer.



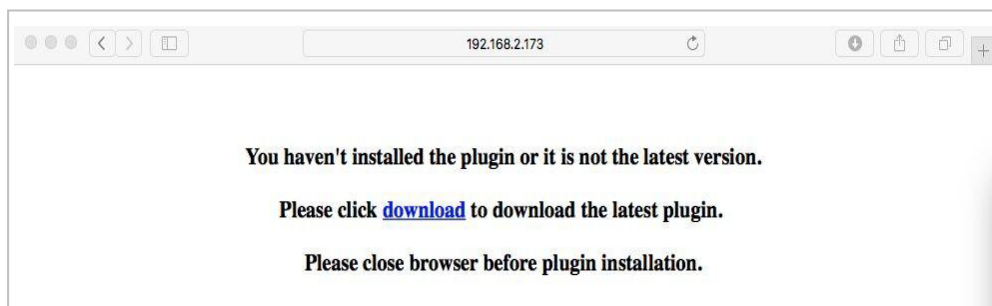
3) After installing the plug-in, close & launch again your browser and repeat step 1 to open the login page. Input your user name and password to login the web client.



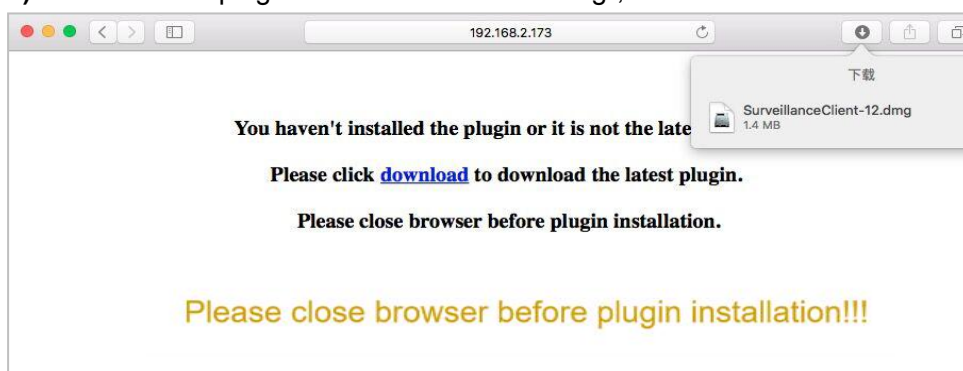
**Note:** If you use Google Chrome, please use Version V41 or below. If you use V42 to V44, you need to enable NPAPI plugins. Please enter <chrome://flags/#enable-npapi> on URL bar to find and enable NPAPI. It doesn't support V45 or above so far.

## For Mac SAFARI:

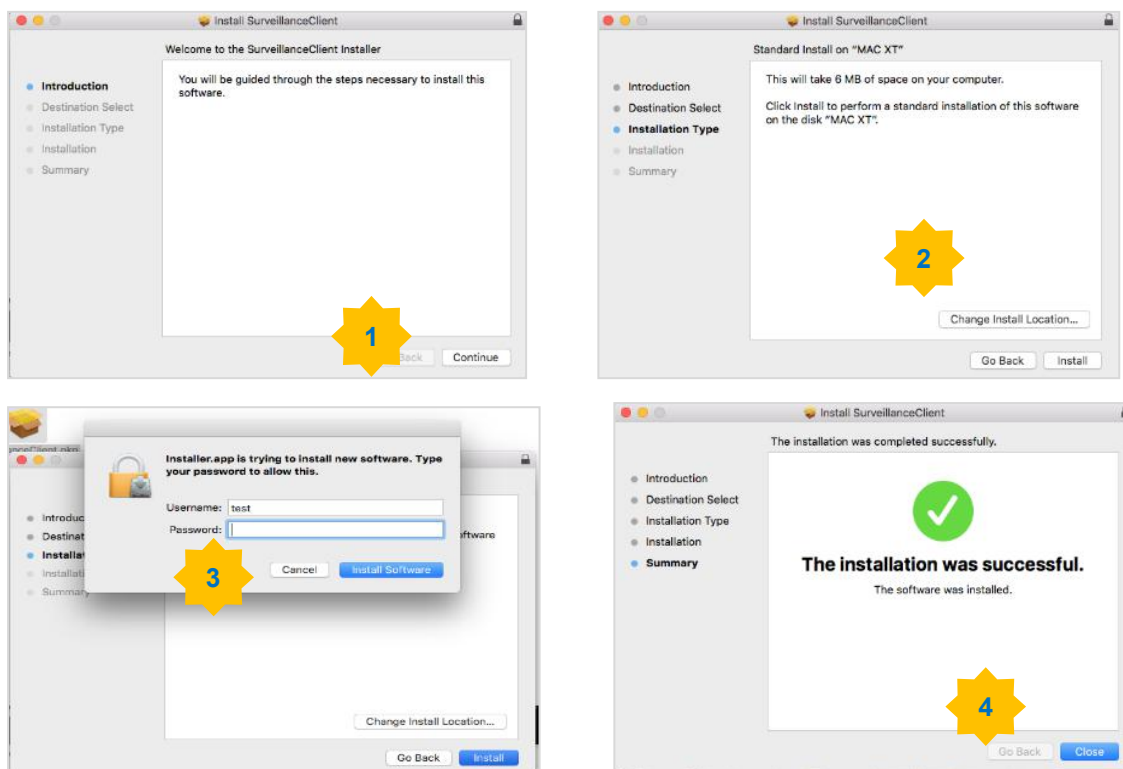
1) Launch the Safari on your Mac, and enter the WIRELESS NVR static IP address or DDNS domain name (Host Name) you have set on WIRELESS NVR in the URL box.



2) Download the plug-in "SurveillanceClient.dmg", locate the downloaded file and double click it.



3) Click on "Continue" --> "Install". Enter user name and password for Mac computer, Click on "Install Software" --> "Close" to finish installation.



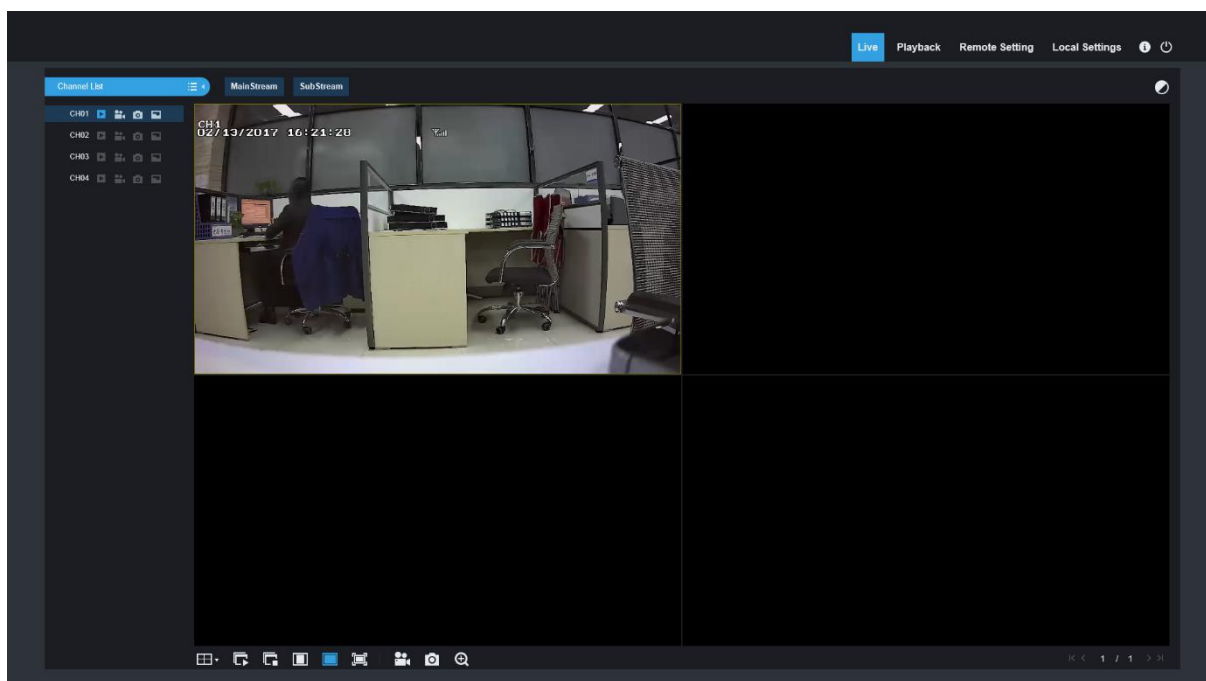
1) Close SAFARI repeat step 1 to open the Web Client login page.

## 6.2 Web Client Manager

The web client supports to full control the WIRELESS NVR with administrator account. Please make sure to protect your user name & password for preventing illegal login.

### 6.2.1 Live Interface

This is the first screen that opens after you have logged in to the Web Client. Here you can open or close live preview, record video to local computer manually, take snapshots of the screens, color adjustment, etc.



#### 1. Buttons on a single live interface:



: Record switch: the remote record switch of client. Record will be automatically saved to a specified position on PC after the function is enabled.



: Snapshot: Capture the selected live image and save it to a specified position on PC. The image is saved as \*.bmp format.



: Digital ZOOM.



: Open the images on Live window.



: Close all the Live channels



: Switch display mode in channel window



: Open the images on Live window.



: Stretch.

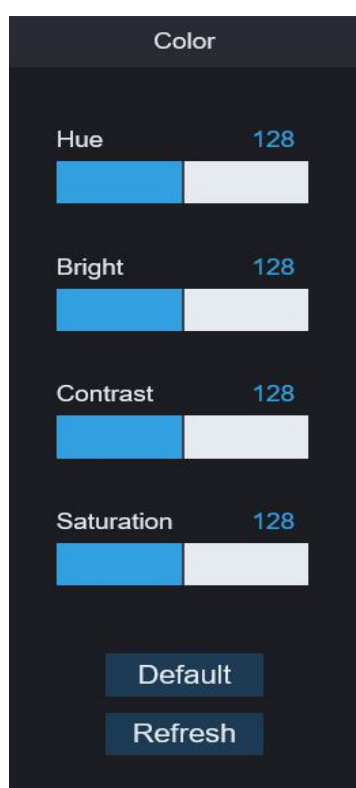


: Original proportions.



: Click to maximize the current window to full screen. Right click to popup menu option and select Exit Full Screen.

## 2. Video Control



Hue: Adjust the chromaticity of video

Bright: Adjust the brightness of video

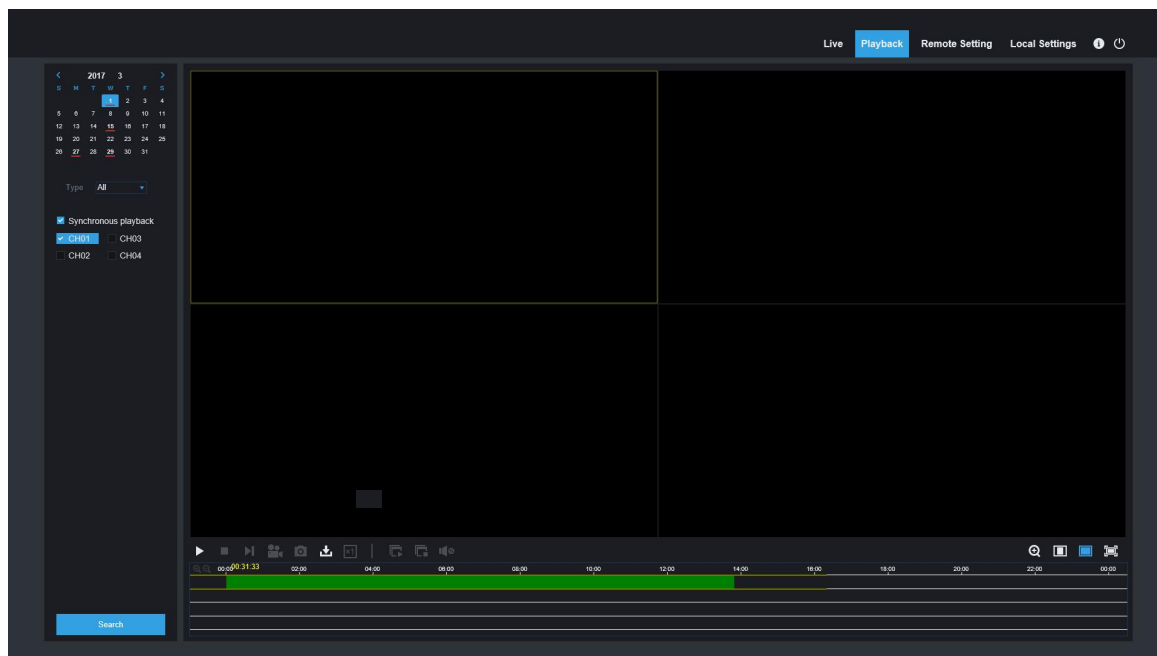
Contrast: Adjust the contrast of video

Saturation: Adjust the saturation of video



## 6.3.2 Playback

You can search & play recorded files stored on the HDD inside the WIRELESS NVR, and save the result to the local directory on your PC.



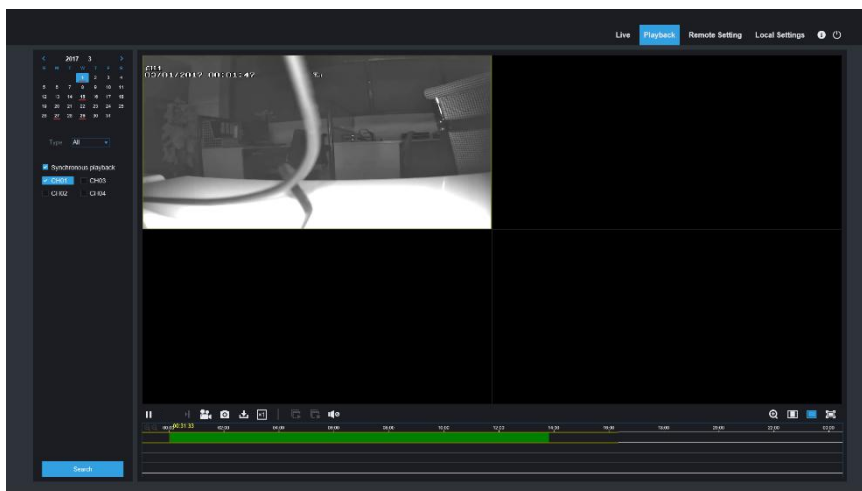
Click **Playback** to enter into Playback interface to remotely view the records in WIRELESS NVR HDD.

It supports 1 to 4 channel record playback.


## 1. Record Search

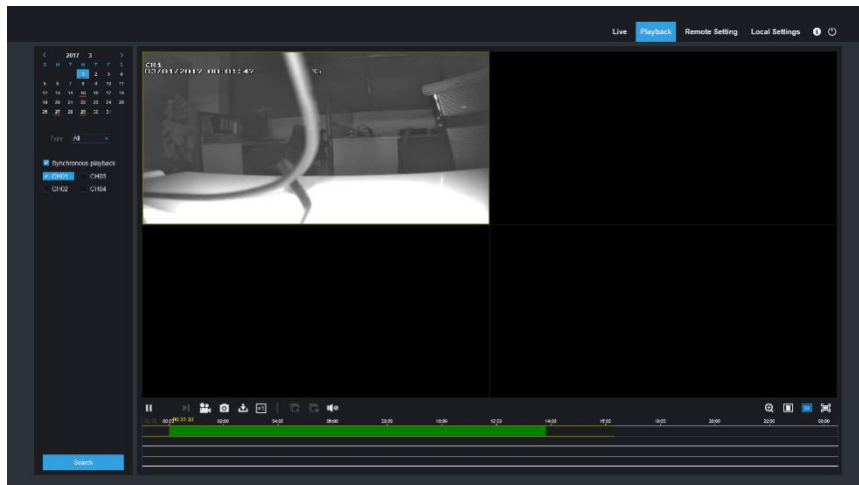
Record playback procedure


Firstly, select the date you want to check and tick 1 to 4 channels. Any record files in current channel at current date will be displayed in the status bar of the interface.






Secondly, select record type (Normal record, Motion record) and channels, and then click

“”, and time axis panel will display specific time quantum. On the time axis, red part stands for motion record, green stands for normal record and original part stands for no record during this period.



Before playback, choose to enable playback 4 channels synchronously. If you tick-select “ Synchronous playback”, that means the selected channel will playback synchronously; otherwise, you could separately control the channels playback. Thirdly, start playback

Click  to start record playback. When mouse curse is moving on the time axis, the time point of current position will be displayed on the time axis screen. Click to locate the record. Click the icon  or  to zoom in/out the time bar display ratio.

## 2. Playback Control

Playback control bar.




Detailed brief description is shown as below list

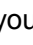
Key	Description	Key	Description
	Play		
	Pause		
	Stop		Slow playing 1/2, 1/4, 1/8, Fast playing 1/2/4/8
	By frame		Digital ZOOM
	Record Clip		Original proportions
	Snap		Stretch
	Download		Full Screen
	Open all the playback channels		Stop playing all the playback

### Record file clip




After opening playback, click  icon to clip the selected file; and click again to stop the clip function. Then playback clip is successfully done. Record clip file will be saved as \*.264 format.

### Snapshot function

Move the mouse curse to the channel you want to capture, and click  icon to capture the live images remotely. After capturing the images successfully, a path prompt box will be popped up. The captured file will be saved as .bmp format.

## Record file download

Click download icon “” on the control bar to display all the matched record file according to the search conditions of channels.

	<input type="checkbox"/>	Start Time	End Time	Status	File Size
1	<input type="checkbox"/>	2016-11-20 00:00:00	2016-11-20 00:00:49	Unable to Download	49.50M
2	<input type="checkbox"/>	2016-11-20 00:01:17	2016-11-20 00:01:17	Unable to Download	0.50M
3	<input type="checkbox"/>	2016-11-20 00:01:19	2016-11-20 00:01:25	Unable to Download	5.50M
4	<input type="checkbox"/>	2016-11-20 00:01:27	2016-11-20 00:01:30	Unable to Download	3.00M
5	<input type="checkbox"/>	2016-11-20 00:01:31	2016-11-20 00:01:32	Unable to Download	1.00M
6	<input type="checkbox"/>	2016-11-20 00:01:34	2016-11-20 00:01:36	Unable to Download	2.50M
7	<input type="checkbox"/>	2016-11-20 00:01:37	2016-11-20 00:01:38	Unable to Download	1.50M
8	<input type="checkbox"/>	2016-11-20 00:01:41	2016-11-20 00:03:30	Unable to Download	109.50M
9	<input type="checkbox"/>	2016-11-20 00:03:30	2016-11-20 00:07:43	Unable to Download	253.56M
10	<input type="checkbox"/>	2016-11-20 00:07:43	2016-11-20 00:11:56	Unable to Download	253.72M

10

1 / 32

Show from 1 to 10, total 314. Per page : 10

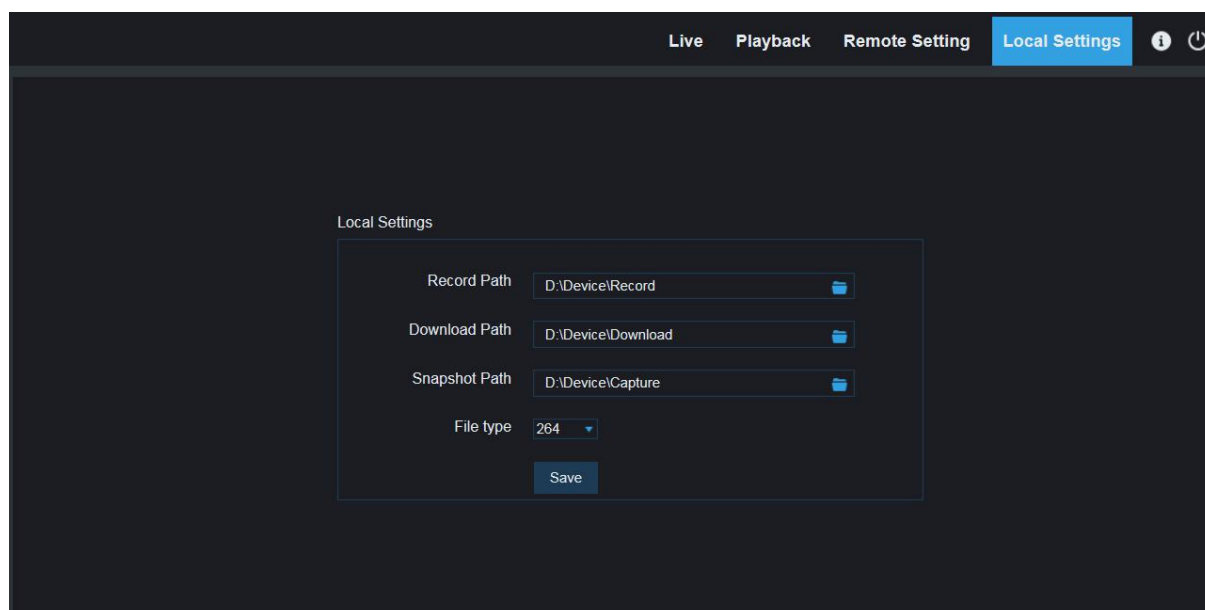
Start Download

Stop Download

Tick-select the record file you want to download and click [Start download] .System will download the record file in sequence and save to local PC. The downloading file will be displayed in percentage form. After downloading finishes, “Complete” will be displayed on the status bar.

Tip: The recorder supports HTTP, if there is network disconnection during the download, continue to download from the file point before disconnecting when the network recovers.

### 6.3.3 Local Setting



**Record Path:** Set the path to save manual recordings on your PC's local drive.

**Download Path:** Set the path on your PC's local drive where you want to download recordings from the WIRELESS NVR.

**Snapshot Path:** Set the path to save manual snapshots on your PC's local drive.

**Save:** Click Save to save the modifications.

**File Type:** Choose your preferred file type for manual recordings.

**Interval:** Determine the maximum length of manual recordings.

## Chapter 7 Appendix

### 7.1 Troubleshooting

1. Q: What can I do if the system does not detect the HDD?  
A: Check if the power supply system is properly connected and data cord and power cables are securely connected, and if something wrong with the HDD interface. Or you may check if your HDD is supported by referring to the specifications or descriptions.
2. Q: I have changed the password but forget the new password, how can I access the system?  
A: If you forget system password, please consult with our technical personnel. We strongly suggest user to set password easy to be remembered and relatively safe. If you have safety requirement, please do not set very simply password, such as 000000.
3. Q: We see abnormal video signal or even no video signal by connecting the WIRELESS NVR and camera together. Power supply for both devices is OK. What is wrong?  
A: Check network cable at WIRELESS NVR side to see if the cable is firmly connected and if it is worn out and needs to be replaced, or to check if NTSC or PAL is selected consistently.
4. Q: How to prevent WIRELESS NVR from being influenced by heat?  
A: The WIRELESS NVR needs to dissipate heat while it is running. Please place the WIRELESS NVR in a place with good air circulation and away from heat sources to ensure stability and life of the WIRELESS NVR.
5. Q: The remote controller of WIRELESS NVR doesn't work while the monitor screen is OK and panel keys are functional. Why?  
A: Operate again by aiming the remote controller at the IR receiver on front panel. If it still doesn't work, please check if the batteries in the remote controller are dying. If not, check if the remote controller is broken.
6. Q: I want to take out HDD from my PC and install it in WIRELESS NVR. Can it work?  
A: All HDDs supported by the system can be used. But remember, once WIRELESS NVR runs, the data on your HDD will be lost.
7. Q: Can I playback while recording?  
A: Yes. The system supports the function of playing while recording.
8. Q: Can I clear some records on HDD of WIRELESS NVR?  
A: In consideration of the file security, you may not clear part of records. If you want to remove all the records, you can format HDD.
9. Q: Why can't I log in WIRELESS NVR client?  
A: Please check if the network connection settings are correct and RJ-45 port is with good contact. And check if your account and password are correctly input.
10. Q: Why can't I find any records during playback?  
A: Please check if the data line connection for HDD is OK and system time is properly adjusted. Try a few times and restart. If it still doesn't work, check if the HDD is broken.

12. Q: Why doesn't dynamic detection work?  
A: Please check if the motion detection time and motion detection regional setting are correct and if the sensitivity is set too low.
13. Q: Why doesn't alarm work?  
A: Please check if the alarm setting, alarm connection and alarm input signals are correct.
14. Q: Why does buzzer keep alarming?  
A: Please check the alarm setting, check if motion detection function is enabled and object motion is detected all the time and if I/O alarm is set as Always Off. Besides, refer to corresponding HDD alarm setting.
15. Q: Why can't I stop recording by pressing "STOP" button or click "Stop Recording" in context menu?  
A: Pressing Stop or Stop Recording can only stop manual record. If you want to stop Scheduled recording in certain time quantum, please change the setting to No Record. To stop Startup recording, please change record mode to scheduled recording or manual recording. Then you may stop recording by the prescribed methods. And another way of stopping recording is to set channel as off status in record setting.

## **7.2 Usage Maintenance**

1. To shut down WIRELESS NVR, please firstly shut down the system and then turn off the power. Do not turn off the power directly or HDD data will be lost or damaged.
2. Please keep WIRELESS NVR away from heat sources or places.
3. Clean the internal dust regularly. Make sure the good ventilation of WIRELESS NVR so as to ensure the good heat dissipation.
4. Please do not hot plugging audio and video cables, or cables connected to ports like RS-232 or RS-485. Otherwise the ports will be damaged.
5. Please check the HDD cable and data cable regularly to see if they are ageing.
6. Please prevent the audio and video signals of WIRELESS NVR from being intervened by other electronic devices, and prevent the HDD from being damaged by static electricity and induced voltage. If the network cable is frequently plugged, it is suggested to replace connecting line regularly, or the input signal may be unstable.
7. This is a class A product. It maybe bring wireless interference in life. Under this situation, it need user to make measures.



## 7.3 Accessories (For reference only)



☐ Remote Controller



☐ Power Adapter



☐ Warranty Card



☐ USB mouse



☐ CD

The material in this document is the intellectual property of our department.

No part of this manual may be reproduced, copied, translated, transmitted, or published in any form or by any means without our department prior written permission.

Our products are under continual improvement and we reserve the right to make changes without notice. But no guarantee is given as to the correctness of its contents.

We do not undertake any responsibility for the harms cause by using our product.

The model of the products in the user's manual only for recognition, but these names also perhaps are belong to other company's registered trademark or the copyright.

The product picture may differ from the actual product, only for your reference. The accessories will probably be different according to the different selling areas. For details of accessories, please refer to your local distributor.

**Copyright reserved**