

# RESPONSE

## 1080p GPS Dash Camera



## User Manual

## Box Contents:



1 x 1080p Dash Camera



1 x GPS Module



1 x Suction Cup Mount



1 x Car Cigarette Lighter Charger

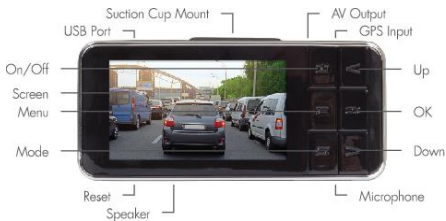


1 x USB Cable



1 x Software CD

# Product Diagram:

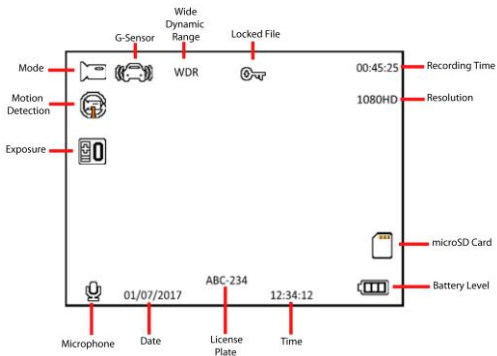


<b>Power</b>	Press for 3 seconds to turn the unit on or off
<b>Menu</b>	Press to enter the menu settings
<b>Mode</b>	Press to switch between video, photo & playback mode / Lock Video File
<b>Up</b>	Up / Zoom
<b>Down</b>	Down / Turn the microphone on or off
<b>Ok</b>	Enter / Record

## LED Status Indicator:

<b>Blue On</b>	Unit is turned on
<b>Blue Flashing</b>	Recording
<b>Red On</b>	Fully Charged
<b>Red Flashing</b>	Charging

# LCD Diagram:



# **Installation:**

## **Suction Cup Mount:**

1. Attach the suction cup mount to the top of the dash camera and slide securely in place.
2. Position the suction cup mount on the windscreen of your vehicle and push down the locking tab to fix securely in place.
3. Adjust the best angle for your dash cameras lens and tighten the knob to fix the position.

Note: It is recommended to place the dash camera behind the rear vision mirror to prevent the camera from obstructing your view while driving.

## **GPS Module:**

1. Insert the plug of the GPS module in to the GPS socket located on the top of the dash camera.
2. Position the GPS securely in place on your windscreen using the double sided tape fixed to the rear of the module.

## **Power:**

1. Insert the car cigarette lighter charger cable into the cigarette socket of your vehicle.
2. Plug the USB end of the car charger into the USB power socket located on the top of the dash camera.

**Note: The dash camera will automatically turn on and start recording once the car has been started by default. This can be turned off in the settings if required.**

## **MicroSD Card:**

1. Before initial use, insert a microSD card into the microSD card slot located on the right hand side of the dash camera.
2. You will hear a clicking sound once the microSD card has been inserted correctly.

**Note: Suggested microSD card is 4-64GB Class 10.**

# Operation:

## Turning On/Off:

On: Press and hold the power button up to 3 seconds to turn on the device. Once the unit is turned on, the blue LED indicator will illuminate and a welcome screen will appear.

Off: Press and hold the power button for up to 3 seconds for the unit to turn off.

## Charging:

Before initial use, the battery needs to be full charged via the included car cigarette lighter charger or a USB charging port.

The LED status indicator will be illuminated red while charging; once fully charged it will stop being illuminated.

**Note: It is suggested to keep the dash camera connected to power at all times. The video recording using the battery will be very short due to the small size in battery.**



## Recording:

**Video Recording:** Press the Ok/Record button to initialise the recording. The red recording icon should be shown in the top left hand corner. Press the Ok/Record button to stop the recording.

**Note: The dash camera by default will automatically start recording once the car has been turned on and the car charger is connected.**

**Image Recording:** Press the mode button to switch from video to image mode and the icon in the top left hand corner will change. Once in image mode; press the Ok/Record button to take an image.

## Modes:

The dash camera has three modes of operation which include Video, Image and playback.

**Video:** This video mode will appear as default when the unit is first turned on. This mode will allow you to record video and access to the video settings.

**Image:** Select this mode by pressing the mode button and a photo image will appear in the top left hand corner of the display. In this mode you can take photos and access the image settings.

**Playback:** Select this mode by pressing the mode button twice. You can select the file you wish by using the up and down buttons; to play a file press the Ok button.

Note: To delete or protect a video or image file, press the settings button while in playback mode and the setting will appear.

## USB Connection:

Connect the USB cable provided to the socket of the dash camera and the opposite end to your computer. Once the device is connected you will notice 3 options will appear on the dash camera. These options include mass storage, PC camera and video.

**Mass Storage:** This will gain access to the files from your dash camera and appear as a removable storage device on your computer. Use the Ok button to select this mode.

**PC Camera:** Enable the PC camera by pressing the down button and then OK; once this is done you can use the dash camera as a webcam. This can be used on programs such as Skype to use it as a webcam or other software that can work with web cameras.

**Video:** Press the down button twice and select Ok to enter back to normal video mode and will continue to charge.

## TV/Monitor Output:

Connect a HDMI type C cable (not included) to the HDMI socket located on the left side of the dash camera. This will output the video footage to a monitor or TV. Alternatively, you can use a 4 Pole 3.5mm plug to RCA cable (not included) and plug it into the AV socket located on the top of the dash camera.

## Settings:

This device has 3 settings which include video, image and system settings.

1. Select the mode by pressing the mode button and change it to either video or image mode depending on which settings you wish to change.
2. Press the settings button once you're in either the video or image mode and the settings will display.
3. You can cycle through the settings by using the up and down buttons. To select a setting, use the Ok button to enter.
4. To access the system settings, press the settings button twice in either video or image mode. You will notice a system settings list will now display instead of the video or image settings.
5. To exit the settings, press the setting button either once or twice depending on if you are in image, video or system settings and it will revert you back to the normal display.

## Video:

Setting	Option	Description
<b>Resolution</b>	1080FHD / 720p / WVGA / VGA	Switch between 1080p (1920 x 1080, 720p (1280 x 720), WVGA (848 x 480), VGA (640 x 480) recording resolutions
<b>Loop Recording</b>	Off / 2 Mins / 3 Mins / 5 Mins	Overwrites existing files and records in either 2/3/5 minute blocks
<b>WDR</b>	Off / On	Improves video quality during day and night
<b>Exposure</b>	+2/3, +1/3, +0.0, -1/3, -2/3, -1.0, -4/3, -5/3, -2.0	Adjust to either lighten or darken the image
<b>Motion</b>	Off / On	The video will automatically

<b>Detection</b>		start recording once  movement is detected
<b>Record Audio</b>	Off / On	This will include audio  recording on the video file
<b>Date Stamp</b>	Off / On	This will show the time and  date stamp on the video  footage
<b>G-Sensor</b>	Off / Low / Medium / High	Choose the sensitivity of the  G-Sensor when it starts  recording the files will be  protected if your car has  crashed.
<b>Parking Mode</b>	Off / High / Medium / Low	Choose the sensitivity when  it starts recording

## Image:

Setting	Option	Description
<b>Capture Mode</b>	Single / 2S Timer / 5S Timer  / 10S Timer	Include a timer when the images are taken
<b>Resolution</b>	12M / 10M / 8M / 5M / 3M /  2MHD / VGA / 1.3M	Switch between  12M(4032x3025),  10M(3648x2736),  8M(3264x2448),  5M(2592x1944),  3M(2048x1536),  2MHD(1920x1080),  VGA(640x480),  1.3M(1280x960) image resolutions
<b>Burst Mode</b>	Off / On	Take multiple images

<b>Quality</b>	Fine / Normal / Economy	Make the image quality high or low with this mode
<b>Sharpness</b>	Strong / Normal / Soft	Adjust the sharpness of the image depending on the conditions
<b>White Balance</b>	Auto / Daylight / Cloudy / Tungsten	Adjust the balance depending on the lighting conditions
<b>Colour</b>	Colour / Black & White / Sepia	Change the colour mode
<b>ISO</b>	Auto / 100 / 200 / 400	Adjust the digital sensitivity of the image
<b>Exposure</b>	+2/3, +1/3, +0.0, -1/3, -2/3, -1.0, -4/3, -5/3, -2.0	Adjust to either lighten or darken the image



<b>Anti-Shaking</b>	Off / On	Keeps the image stable when driving
<b>Date Stamp</b>	Off / Date / Date/Time	Display the time and date stamp on the image

## System:

<b>Setting</b>	<b>Option</b>	<b>Description</b>
<b>Date/Time</b>	DD/MM/YY / HH:MM:SS	Set the time and date accordingly
<b>Car Num</b>	XXXXXX	Enter your current license plate number
<b>Time Zone Settings</b>	GMT+	Change the default GMT time zone depending on your location

<b>Power On Delay</b>	Off / 3s / 10s / 20s	Set the unit to have a delayed turn on time
<b>Power Off Delay</b>	Off / 3s / 10s / 20s	Set the unit to have a delayed turn off time
<b>Auto Power Off</b>	On / 3 Mins / 5 Mins / 10 Mins	Power off the unit after a period of time
<b>Beep Sound</b>	Off / On	Turn on or off the sound of the buttons when pressed
<b>Language</b>	English / Chinese / French / Spanish / Portuguese / German / Italian / Japanese / Russian / Polish	Default language is English
<b>TV Mode</b>	NTSC / PAL	Change between the TV format
<b>Frequency</b>	50Hz / 60Hz	Change the video frequency

<b>Screen Saver</b>	Off / 3 Mins / 5 Mins / 10 Mins	Screen can turn off when the unit is turned on
<b>Format</b>	SD Card	Format the microSD card, will lose data if formatted
<b>Default Setting</b>	Cancel / Ok	Revert back to factory default settings
<b>Version</b>	5/05/2017	Displays the firmware version

# Software:

## Windows:

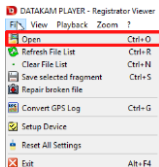
1. Plug the USB cable provided into the USB socket of the dash camera and the opposite end to your computer.
2. Three options will appear on the dash camera which is mass storage, PC camera and Video. Select the mass storage option by pressing the Ok/Record button and the device will enter mass storage mode.
3. Insert the software CD provided into the CD disk drive of your computer.
4. Once the software CD has been inserted; it should automatically pop up with the files. If the disk does not automatically load, then please go to my computer and click on the disk drive (D).
5. Open the folder labelled Datakam Windows GPS Player as shown below.



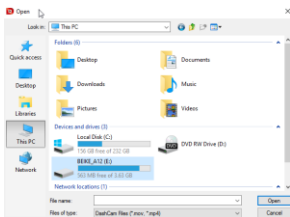
6. Double click on the file labelled Datakam GPS Player as shown below:



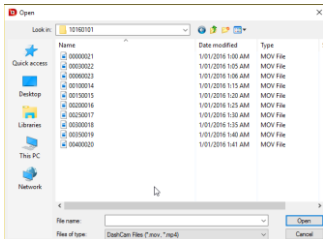
7. Once the software is open, click the file button located in the top left hand corner and then click on open as shown below:



8. The following dialog box will open, locate the dash camera in My Computer and double click on it.



9. Within the dash camera you will notice a folder labelled DCIM, double click on this and you will notice the dash camera recordings appear.



10. Double click on the specific file that you want to play and it will now appear in the dash camera software.

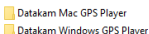
11. The video should now display as shown below, you can add multiple video files and select them in the bottom right hand corner of the software.

12. The GPS location is shown in the top right hand corner and the speed is also shown at the bottom.



## Mac:

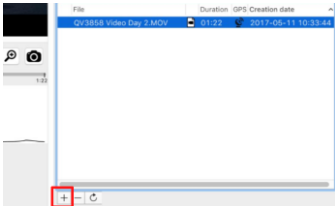
1. Plug the USB cable provided into the USB socket of the dash camera and the opposite end to your computer.
2. Three options will appear on the dash camera which is mass storage, PC camera and Video. Select the mass storage option by pressing the Ok/Record button and the device will enter mass storage mode.
3. Insert the software CD provided into the CD disk drive of your computer.
4. Once the software CD has been inserted; it should automatically pop up with the files. If the disk does not automatically load, then please go to Finder and click on the disk drive located under devices.
5. Open the folder labelled Datakam Mac GPS Player as shown below.



6. Double click on the file labelled Datakam GPS Player as shown below:



7. Once the software is open, click the add button located in the bottom right hand corner as shown below:



8. A dialog box will open; select the file you wish to choose by going in to the dash camera under devices and double click on it.

9. The video should now display as shown below, you can add multiple video files and select them in the bottom right hand corner of the software. The GPS Location and speed are now shown.





## Troubleshooting:

Problem	Solution
<b>Will Not Record</b>	Make sure the microSD card is inserted properly
	Change to a lower resolution
	Ensure the device is on loop recording otherwise it will stop when the microSD card is full
	Insert a larger capacity microSD Card
	Delete unnecessary files to free space
<b>The Buttons Don't Work</b>	Press the reset button located at the bottom of the dash camera

<b>Will Not Turn On</b>	Check if the car charger is working correctly otherwise try charging with the USB cable
<b>Image Is Not Clear</b>	Ensure the camera lens is clean

## Features:

- G-Sensor
- Parking Mode
- Wide Dynamic Range Lens
- Loop, Motion & Manual Recording
- Windows & Mac® Supported
- Datakam Open Street Map Software
- Ultra-Wide 170° Lens
- Auto Power On
- TV/Monitor HDMI Output
- 12/24VDC Operation
- In-Built Mic & Speaker

## Specifications:

Display: 2.7" LCD

Video Resolution: 1080p (1920 x 1080)

720p (1280 x 720)

Image Resolution: 12MP

Frame Rate: 30fps

Lens Angle: 170°

Lens: 6G

Zoom: 4X

Video Compression: H.264

Video File Format: AVI

Photo File Format: JPEG

Video Output: HDMI Type C, 4 Pole 3.5mm AV Jack

Loop Recording: 2/3/5 Minutes

Storage: Up to 64GB microSD (Class 10)

Battery: Li-ion 3.7V, 400mAh

Power: 5VDC @ 1000mA

Car Charger Voltage Input: 12-36VDC

Dimensions: 104(L) x 47(H) x 33(D)mm