



Wageloch takes all your rostering, time and attendance tasks online. So it's easy to take care of business anywhere, any time, on any device.

Simple and seamless

Say goodbye to tricky tech. Wageloch is as simple as it gets, with everything configured and automated in one platform.

Super savings

Spend less time on timesheets, rostering, data entry, awards and payroll reports.

Greater accuracy

With electronic timesheets and rostering, our smart software manages compliance obligations and eliminates human error.

Reliable reporting and auditing

Enjoy simple, custom reports. Easily check staff rostering across sites to avoid duplication.

Better control

We like to make it easy to manage your business. Wageloch automatically applies award rules and pay rates to match your team.



Email Support
helpdesk@wageloch.com.au

Australia

Adelaide
(08) 7123 2993

Sydney
(02) 8188 7516

Melbourne
(03) 9008 6359

Brisbane
(07) 3056 0287

Perth
(08) 6365 5680

Hobart
(03) 6180 2116

New Zealand

Christchurch
(03) 669 4840

Auckland
(09) 950 8415

wageloch.com.au



Workforce management made easy



Wageloch is the powerful all-in-one workforce management platform that takes all your rostering, time and attendance tasks online – and automatically applies your award rules and pay rates. So you save time, money and mistakes on manual tasks and calculations.

Proudly Australian and family owned since 2006, Wageloch is designed with your business in mind.

Why Wageloch?

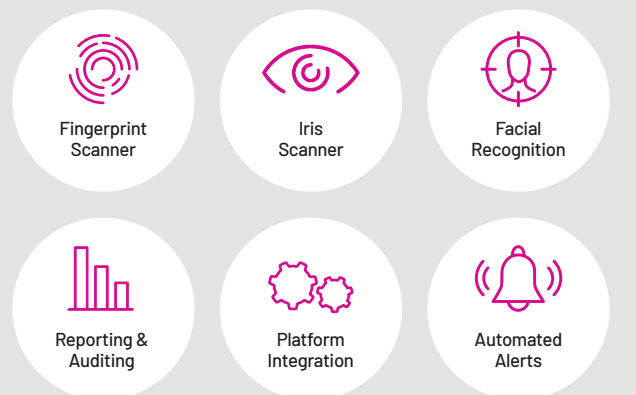
- Manages consistent application of complex wage awards.
- Makes it simple and stress-free to manage staff across all sites.
- Handles 24 hour rostering, clocking and timesheets – so you don't have to.
- Offers flexible biometric clocking options and mobile GPS tracking, so you know the right person is in the right place at the right time.
- Ability to roster staff and reallocate hours across different locations.
- Easily communicate shift and rostering updates via the mobile app.

Need a simpler attendance management software solution that puts your business first?

Call us to book a demo today!

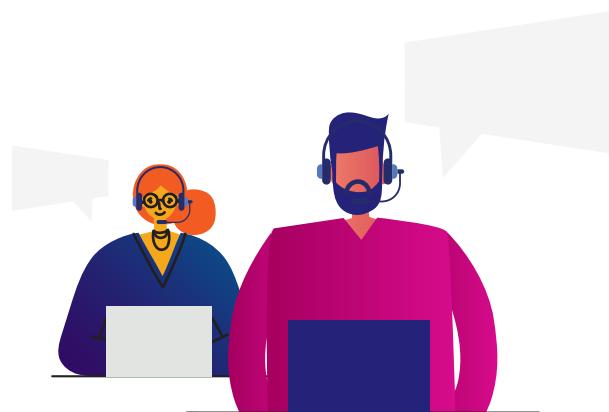
Tailored to you

We can configure Wageloch to meet your unique business needs, now and in the future.



Local, friendly support

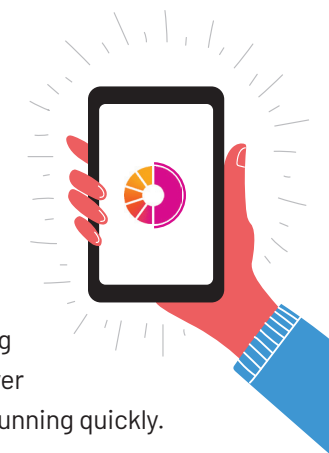
From training to troubleshooting, we'll guide you step-by-step through everything you need to know. Speak to a local expert, in real time, any time you need a hand – and far beyond your first payroll cycle.



We know your industry inside out

Thousands of businesses and industry leaders across Australia and New Zealand rely on Wageloch to make managing their team a breeze. So wherever you work, we'll get you up and running quickly.

- Pharmacy
- Healthcare
- Hospitality
- Manufacturing
- Retail
- Education
- Childcare
- Mobile workforces



“Wageloch has slashed our data entry from a whole day to under an hour, and made a job that required two full-time staff manageable by one!”

– G. Hayward, Chemplus Pty Ltd

Easy integrations

Wageloch integrates seamlessly with powerful payroll, POS and bookkeeping platforms including MYOB, Xero and Reckon. We can even connect it with your existing systems – so you spend less time on admin tasks, and more on what matters most.

