

# PUBLIC RURAL CRISIS FUND

## Support During Crises

During times of crisis, the QCWA is frequently the reliable and trusted source of support.

Our Public Rural Crisis Fund, established in 1990, provides support for Queensland women and families suffering from natural disasters or other crises.

Every dollar raised by QCWA members goes directly to those in need. 100% of all direct debit donations to PRCF goes to recipient families. For all other payment types, we only deduct the payment provider's processing fee from your donation. We take no administration fees at all from donations.

We are currently assisting farmers and their families with household support in every part of Queensland. Support is in the form of providing grocery vouchers or store credit or paying a household bill such as a utility or a medical account.

## Applying for Support

The PRCF provides financial support to families/households in two circumstances:

- Natural Disasters such as flood, fire, cyclone or drought. You can apply for financial support of up to \$1000 per family/household.
- General financial hardship provides up to \$500 per family/household.

Please ensure you use the correct application form, fill in all areas and provide documentation per the instructions on the form.

For both types of applications, only one application will be accepted each calendar year per family/household.

Click the following links to download the relevant form.

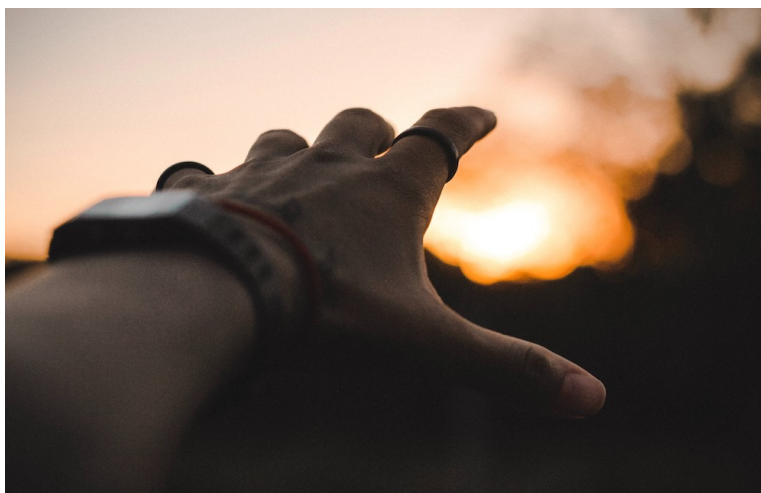
[PRCF Natural Disaster Application Form](#)

[PRCF General Application Form](#)

Alternatively, please contact the QCWA State Office on 07 3236 6735 for further assistance.

## LEND A HAND

Help us support Queensland families suffering in a crisis.



The QCWA welcomes donations in support of our Public Rural Crisis Fund, which has Deductable Gift Recipient status. Every dollar raised by QCWA members or donated via direct debit to PRCF goes directly to those in need.

**DONATE HERE**

**To explore more of what we do, simply click on the links below.**

**ADVOCACY**

**COUNTRY KITCHENS**

**RUTH MAGAZINE**

**QCWA RECIPES**

**HEALTH AWARENESS**

**STUDENT BURSARIES**

**WHAT WE DO**

**DVCONNECT**

INTERNATIONAL  
ACTIVITIES

*The QCWA would like to thank the following for their valued support.*

