

# Henley Essence


Yorke 21 (21.14sq)

**\$599,343\*** Fixed Price

Elle Facade



Façade colours and materials shown may not be available due to land estate design guidelines. Refer to your Henley new home consultant for clarification. Price excludes tiles, stone and/or full render to façade treatment if shown, timber windows, landscaping, fencing, driveway, decking, planter box and decorative lights or any change required by Developer to façade.

 **Hartleigh**  
**CLYDE NORTH**  
Lot No. 1428 (480m<sup>2</sup>)

## House and Land *Inclusions*

Fixed Site Costs<sup>^</sup>

Carpet and Timber Look Flooring<sup>~</sup>

Colorbond<sup>®</sup> or Tiled Roof

Aluminium Stacker Door to Alfresco

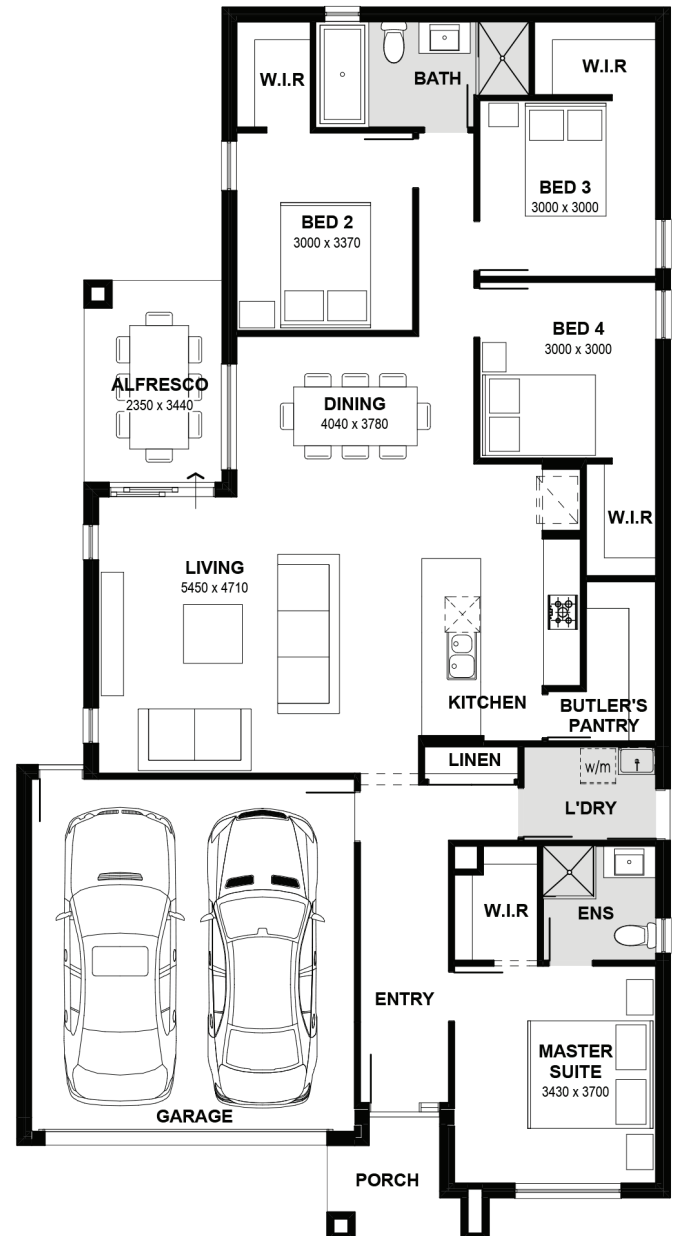
Double Glazed Windows<sup>+</sup>

Grand Island Benchtops

Entertainers Kitchen Pack

Bathroom Bliss Pack

Estate Guidelines<sup>#</sup>



# Henley

**ADVANTAGE**

NOW INCLUDED

Henley Berwick Waters  
Springbrook Drive  
CLYDE NORTH, VIC

Hours 11:00am — 5.30pm  
Phone (03) 8306 6070  
henley.com.au

\*Home price based on a standard home, standard inclusions, Henley's preferred siting and Henley's preferred building surveyor. The price does not include additional costs should land titles be delayed, any allowance for bushfire requirements, or any changes required by Developer which are discretionary or cannot be identified from Estate Guidelines at the time of pricing. <sup>^</sup>Fixed site costs do not include costs associated with footing probes where required and costs resulting from the probe. Fixed site costs are offered on the proviso that the Developer provides (1) level 1 compaction report for the lot that is no more than 24 months old (2) a survey of land that matches the land engineering submitted to Henley with the fixed site cost application. <sup>-</sup>Flooring supplied is Category 1 Carpet, and Category 1A Nordic Timber Laminate as per Floor Covering Layout available from your Sales Consultant. <sup>+</sup>Double glazed windows excludes all doors (entry doors, stacker doors, bi-fold doors, sliding doors and half-light/ full light laundry doors, all door frames (sidelights), butt jointed corner windows and picture windows to living areas. Allowance for Estate Guidelines<sup>#</sup> is based on items that can be identified in the Estate Guidelines at the time of fixing price and does not include discretionary items. Internal stock images may be used when actual image for the design is not available. Photography and illustrations to be used as a guide. Additional cost fixtures & fittings may be shown.