

# 1 System Requirements

This quick start guide will walk you through the following 5 major parts to get you started with using idrive ONE-PLUS.

## Download and Install

Download and Install idrive ONE-PLUS on your Linux machine

## Launch idrive ONE-PLUS

Launch and log in to idrive ONE-PLUS

## Create File Backup Set

Create backup set according to your preferences

## Run Backup Jobs

Run the backup job to back up data

## Restore Data

Restore backed up data to your system

## 2 System Requirements

### GUI Desktop Environment

The Linux machine must be installed with a GUI desktop environment, i.e. GNOME, KDE, Cinnamon etc.

### Linux Packages

The following packages has to be present on the Linux machine in order for idrive ONE-PLUS to be installed.

- curl <https://curl.haxx.se>

The 'curl' command is used by both the Idrive ONE-PLUS sh script and rpm installer to download components from idrive CBS server during the installation process.

- tar <https://www.gnu.org/software/tar>

The 'tar' command is used by both the idrive ONE-PLUS sh script, gz, and rpm installer to uncompress and extract installation files or components downloaded from the idrive CBS backup server onto the Linux machine.

- rpm <http://rpm.org>

The 'rpm' package must be installed to use the idrive ONE-PLUS rpm installation method.

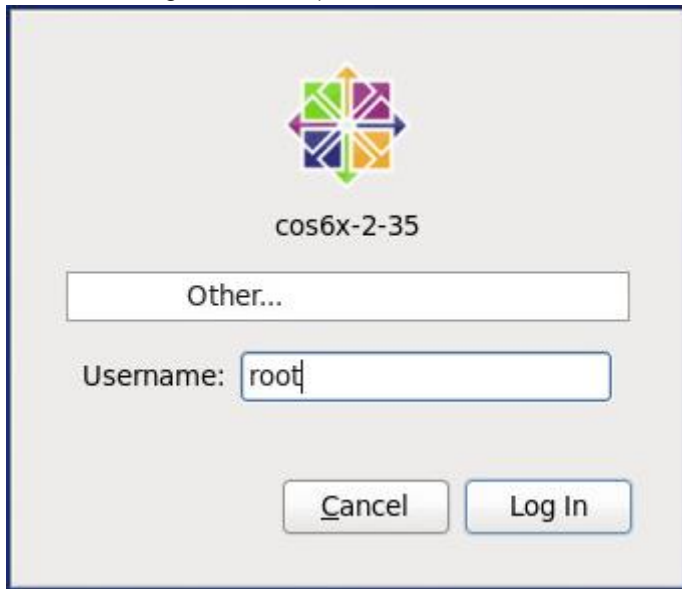
- dpkg <https://packages.ubuntu.com/trusty/dpkg>

The 'dpkg' package must be installed to use the idrive ONE-PLUS deb installation method on Ubuntu LTS Linux platforms supported from v7.15.0.0 or above.

### 3 Download and Install idrive ONE-PLUS

i. RedHat/Centos rpm

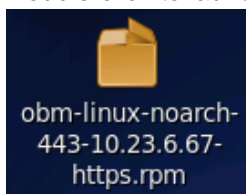
1. Login as root on Linux GUI. (Alternatively, you can remotely invoke the GUI of another Linux machine using SSH client.)



2. In a web browser, go to <https://idrive.net.au/signup.html>
3. Under **ONE-PLUS™**, click on Download



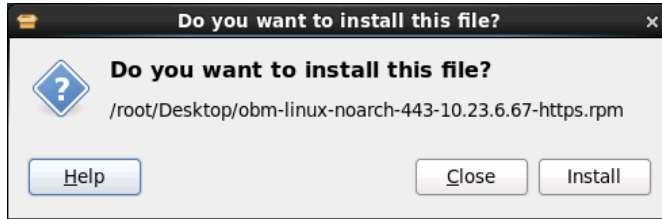
4. Double-click to launch the installation package you have downloaded.



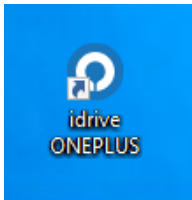
5. When the following warning message appears, click **Continue Anyway** to proceed.



6. Click **Install** to start the installation.



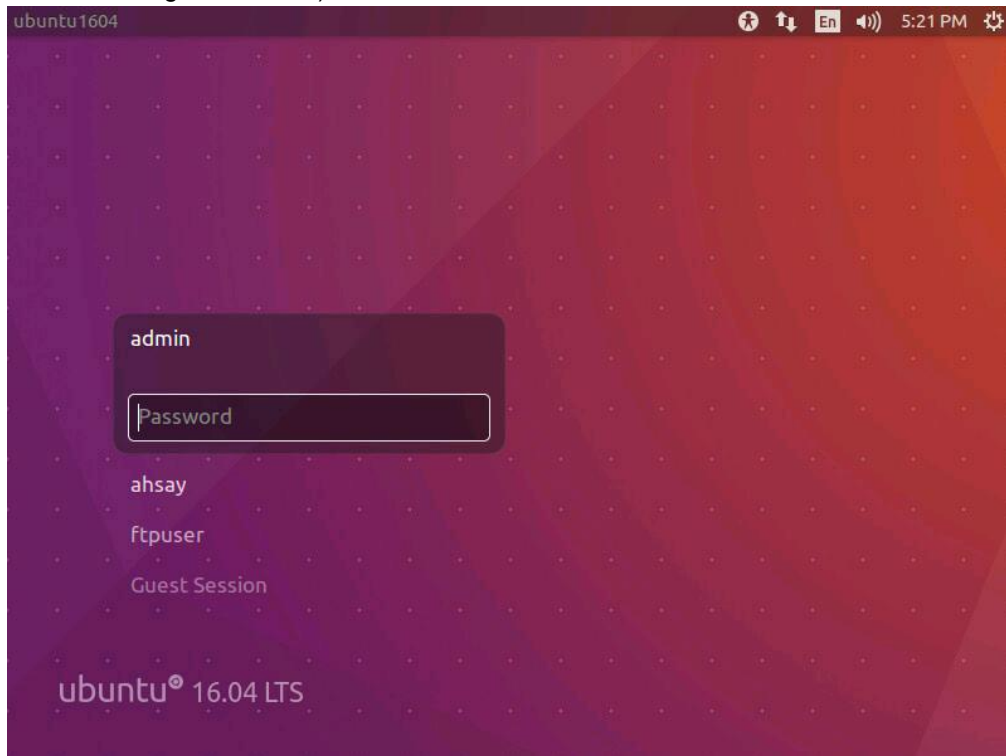
7. Upon successful installation, the **idrive ONE-PLUS** icon will be added to the desktop as a shortcut.



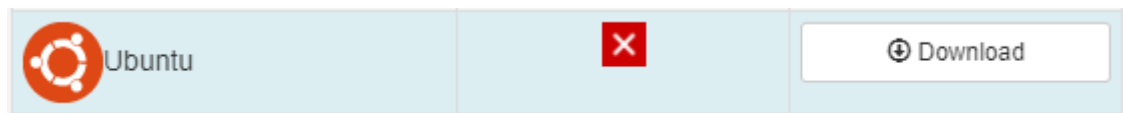
Alternatively, you can also click the **Applications** menu bar and then select **Other** to see the **idrive ONE-PLUS** option.

## ii. Ubuntu .DEB

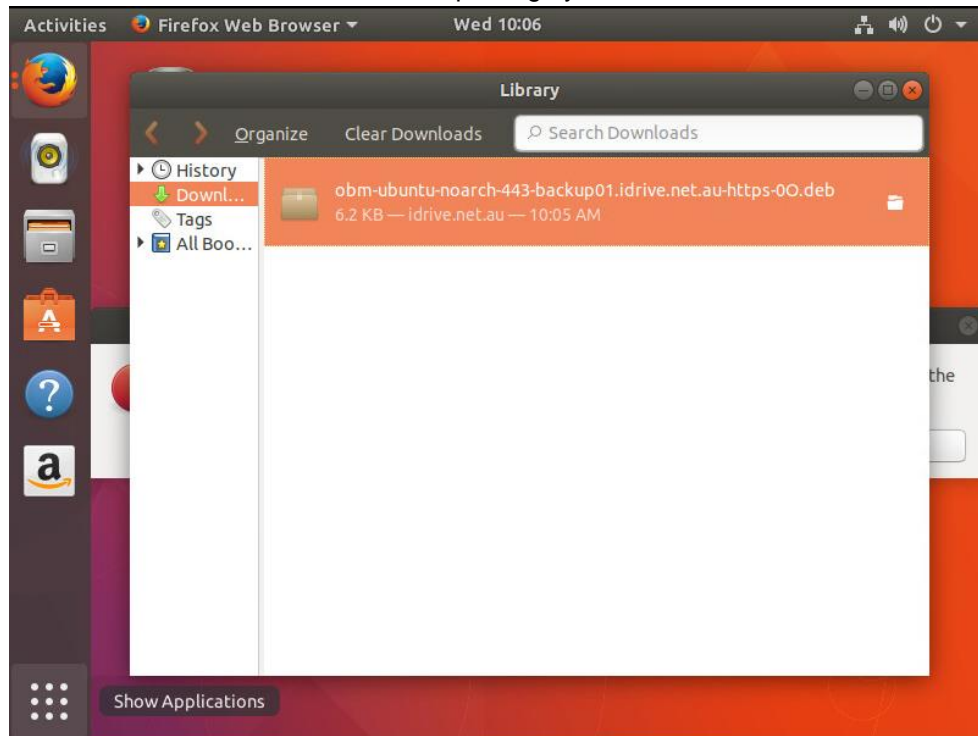
Login as admin on Ubuntu GUI. (Alternatively, you can remotely invoke the GUI of another Ubuntu machine using SSH client.)



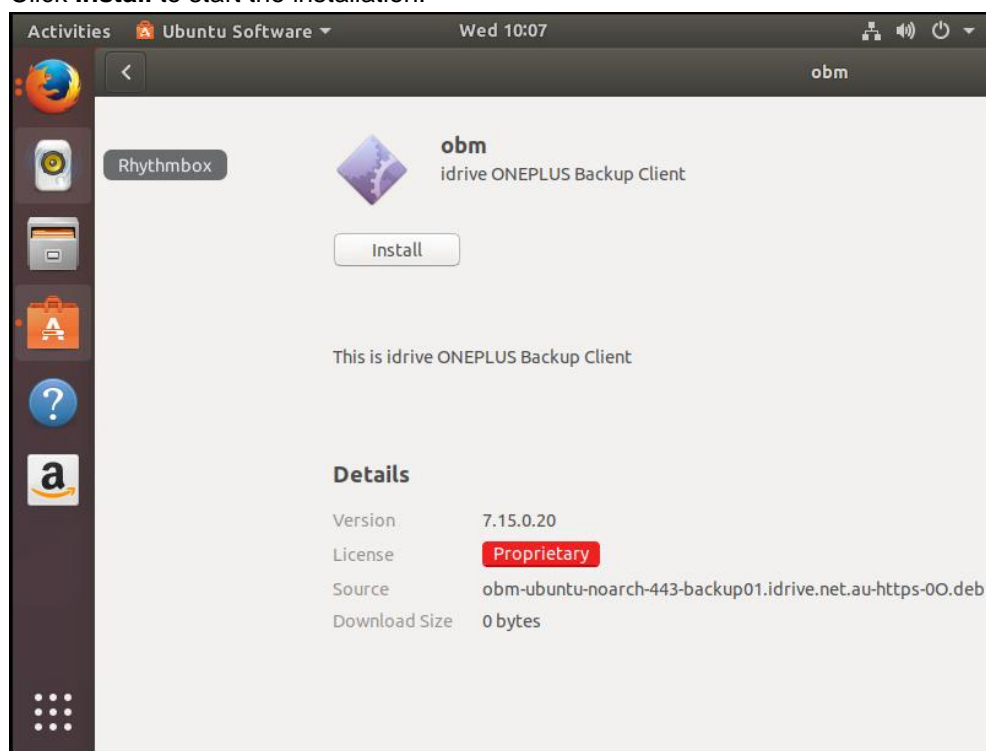
1. In a web browser, go to <https://idrive.net.au/signup.html>
2. Under **ONE-PLUS™**, click on Download



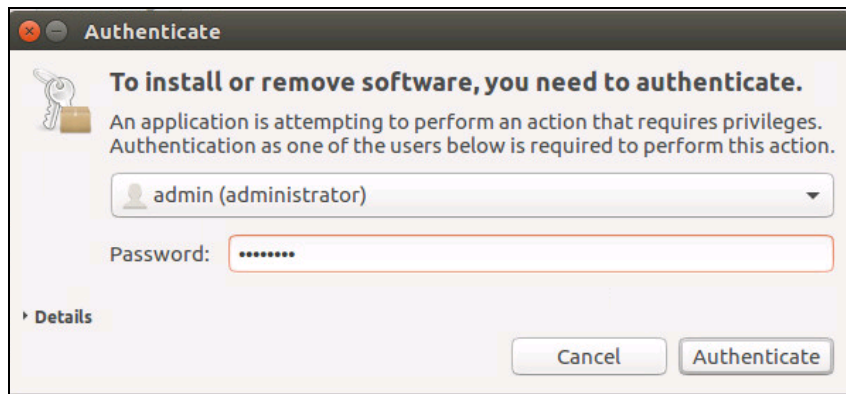
3. Double-click to launch the installation package you have downloaded.



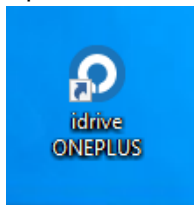
4. Click **Install** to start the installation.



5. Enter the admin account credentials to authenticate.



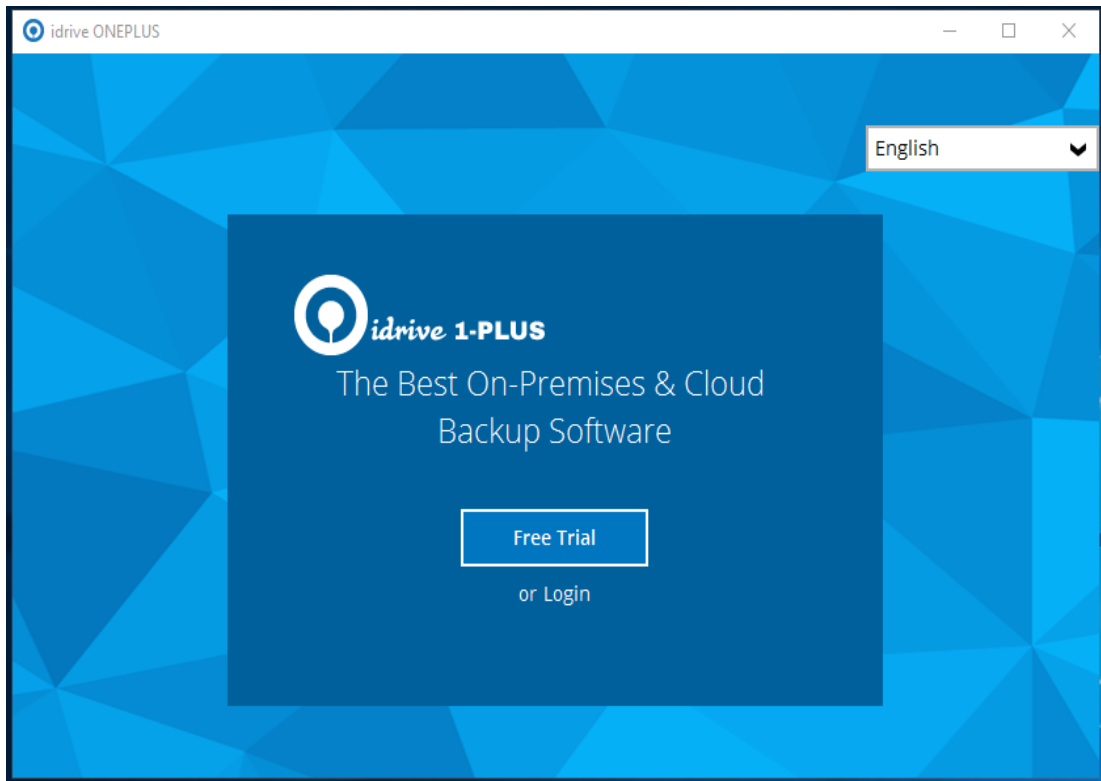
6. Upon successful installation, the **idrive ONE-PLUS** icon will be added to the Applications.



## 4 Starting idrive ONE-PLUS

### Login to idrive ONE-PLUS

1. Free Trial Registration menu will be displayed. Click on **Free Trial** to register for a trial backup account.

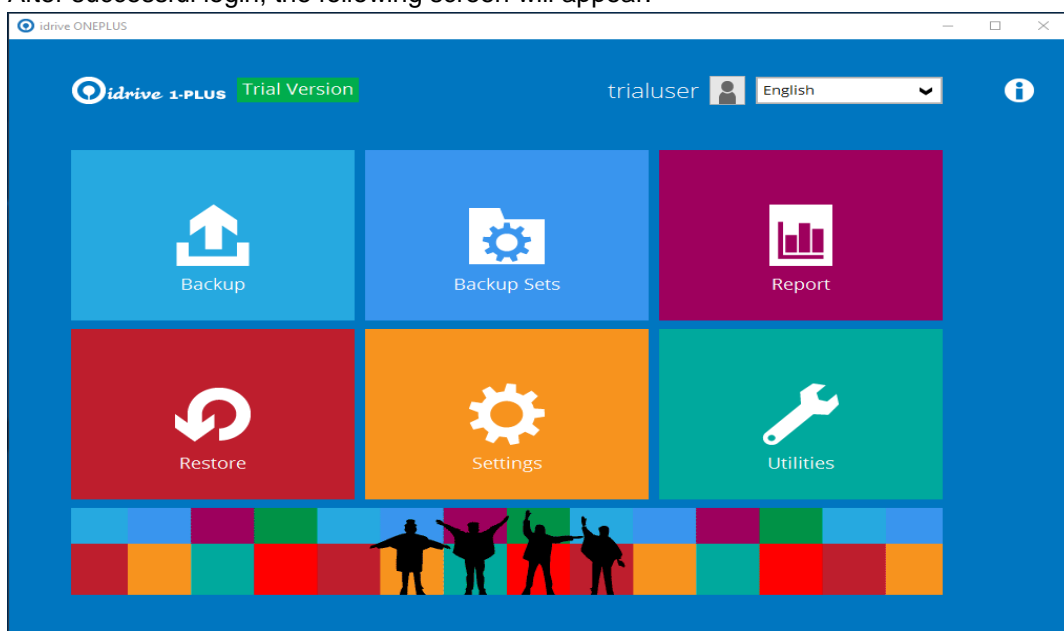


2. If you already have login account, click on Login and Enter Details\
3. Enter your details and click on OK.  
Password Requirements. Minimum 6 characters, combination of numbers, uppercase, lowercase and special characters (?!~\$%^&\*~+=:;'",.)  
Eg. T?ngo23 or Char!u33 or S^mo\$\$33CAT



The screenshot shows a web browser window titled "idrive ONEPLUS". In the top right corner, there is a language dropdown menu set to "English". The main content area features a dark blue registration form with the "idrive 1-PLUS" logo at the top. The form is titled "Register Trial User" and contains the following fields: "Login name" with the value "trialuser", "Email" with the value "trialuser@idrive1plus.com", "Password" with masked characters, and "Confirm password" with masked characters. A note at the bottom of the form states "\*All fields are required". An "OK" button is located at the bottom right of the form.

4. After successful login, the following screen will appear.

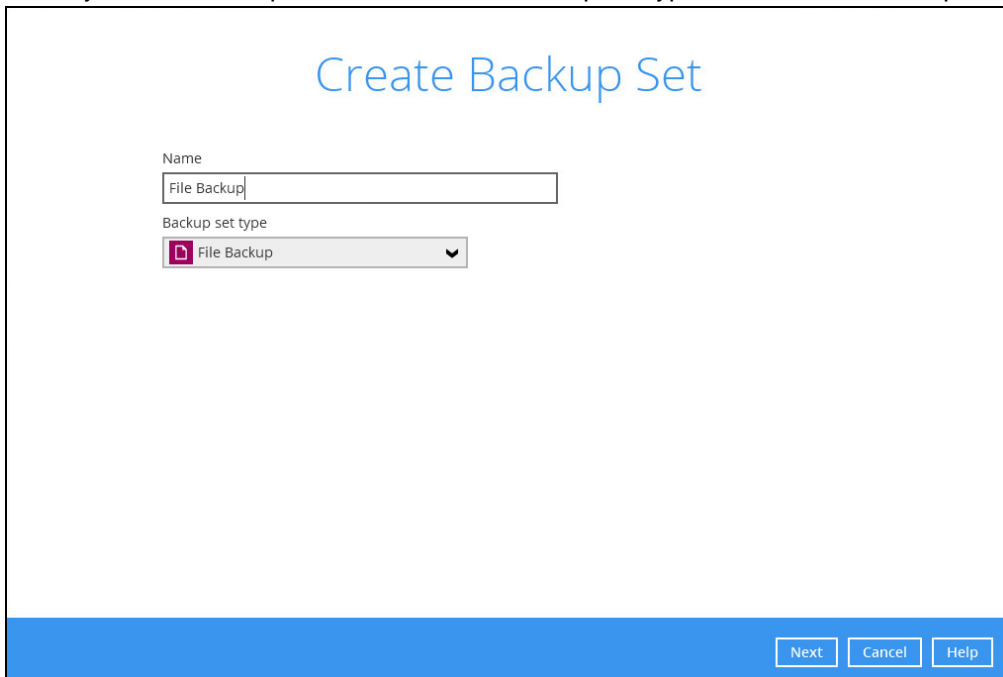


## 5 Creating a File Backup Set

5. Click the **Backup Sets** icon on the main interface of idrive ONE-PLUS.



6. Create a new backup set by clicking the "+" icon next to Add new backup set.
7. Name your new backup set and select the Backup set type. Then, click **Next** to proceed.

A dialog box titled "Create Backup Set" in blue text. It contains two input fields: "Name" with the text "File Backup" and "Backup set type" with a dropdown menu showing "File Backup" and a downward arrow. At the bottom right, there are three buttons: "Next", "Cancel", and "Help".

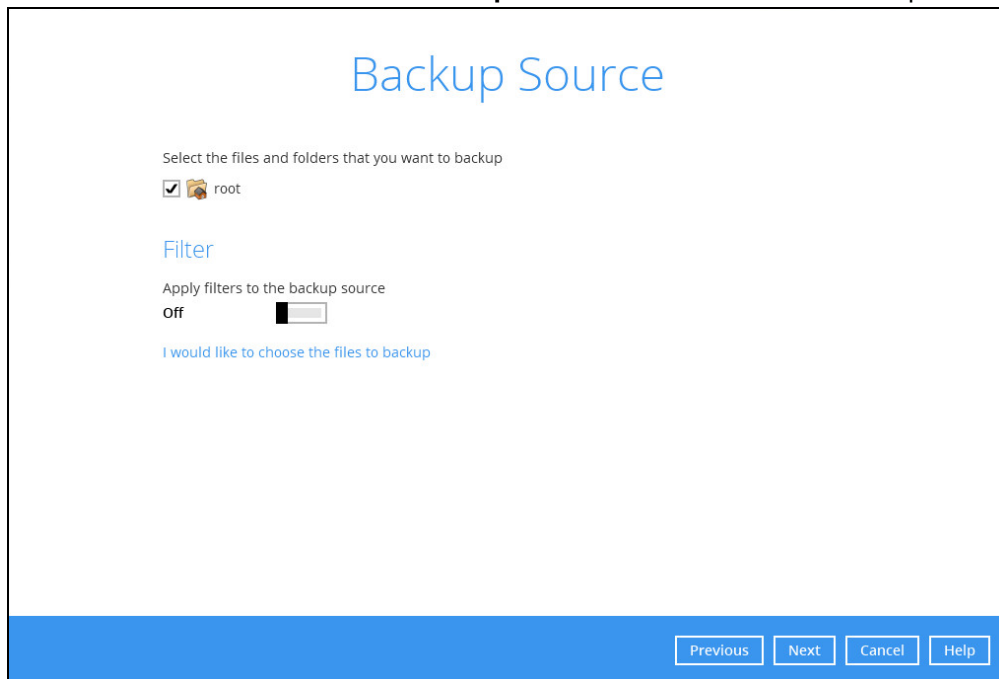
Create Backup Set

Name  
File Backup

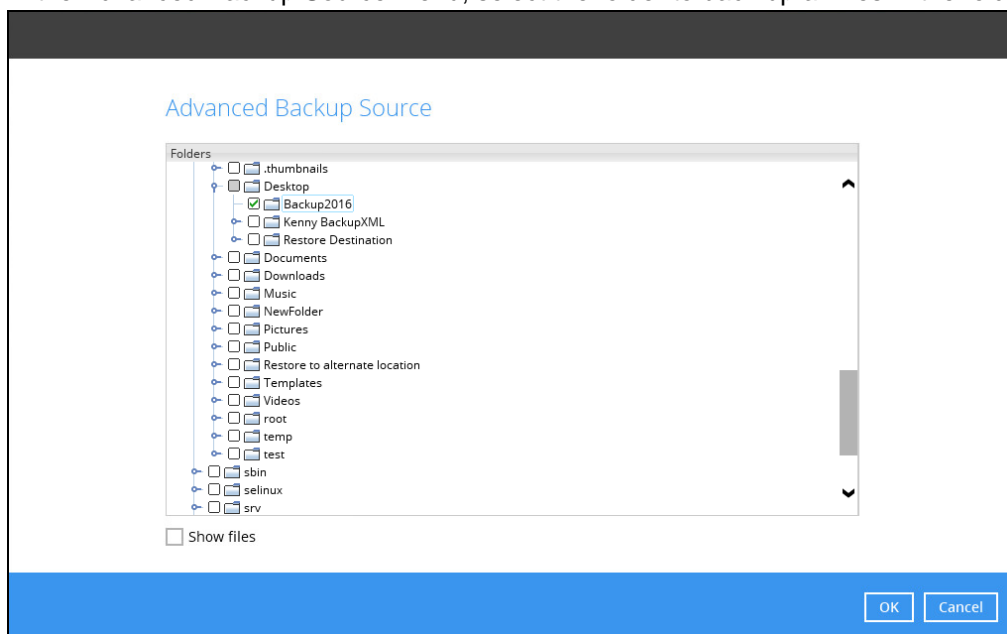
Backup set type  
File Backup ▼

Next Cancel Help

8. In the Backup Source menu, select the files and folder that you would like to backup. Click **I would like to choose the files to backup** to select individual files for backup.

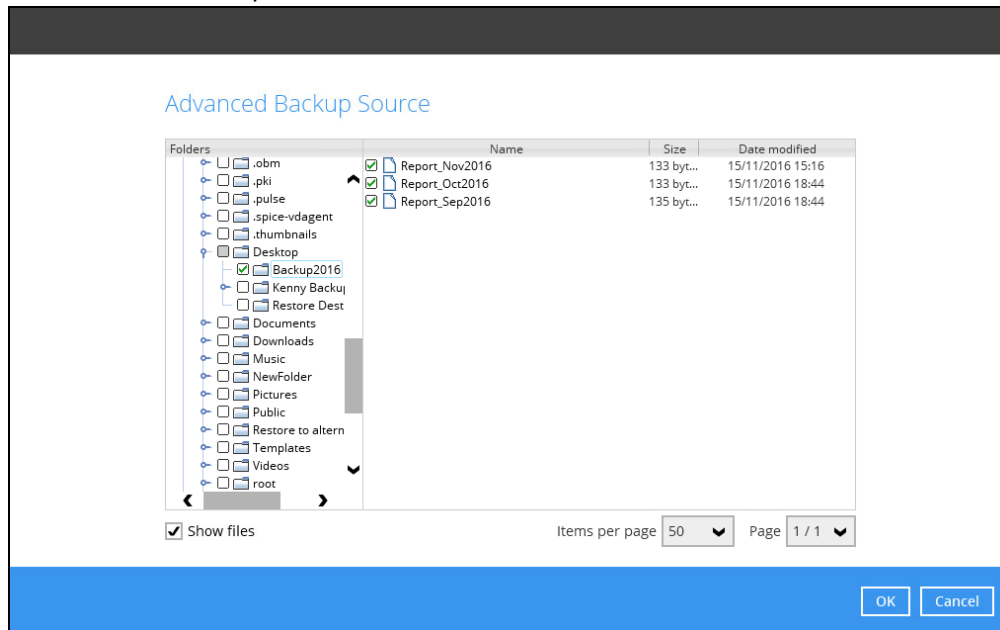


9. In the Advanced Backup Source menu, select the folder to back up all files in the folder.

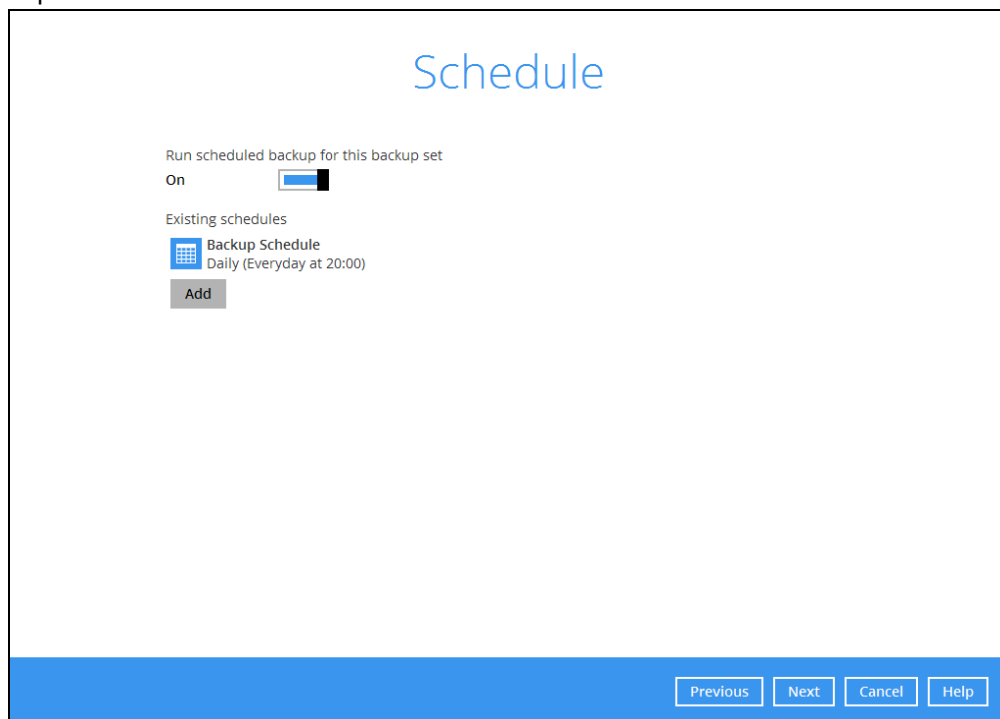


10. Alternatively, if you want to back up a specific file instead of all files in your selected folder, select the **Show files** checkbox at the bottom of the screen. A list of files will appear on the right hand side. Select the checkbox(es) next to the file(s) to back up. Then, click **OK** to close

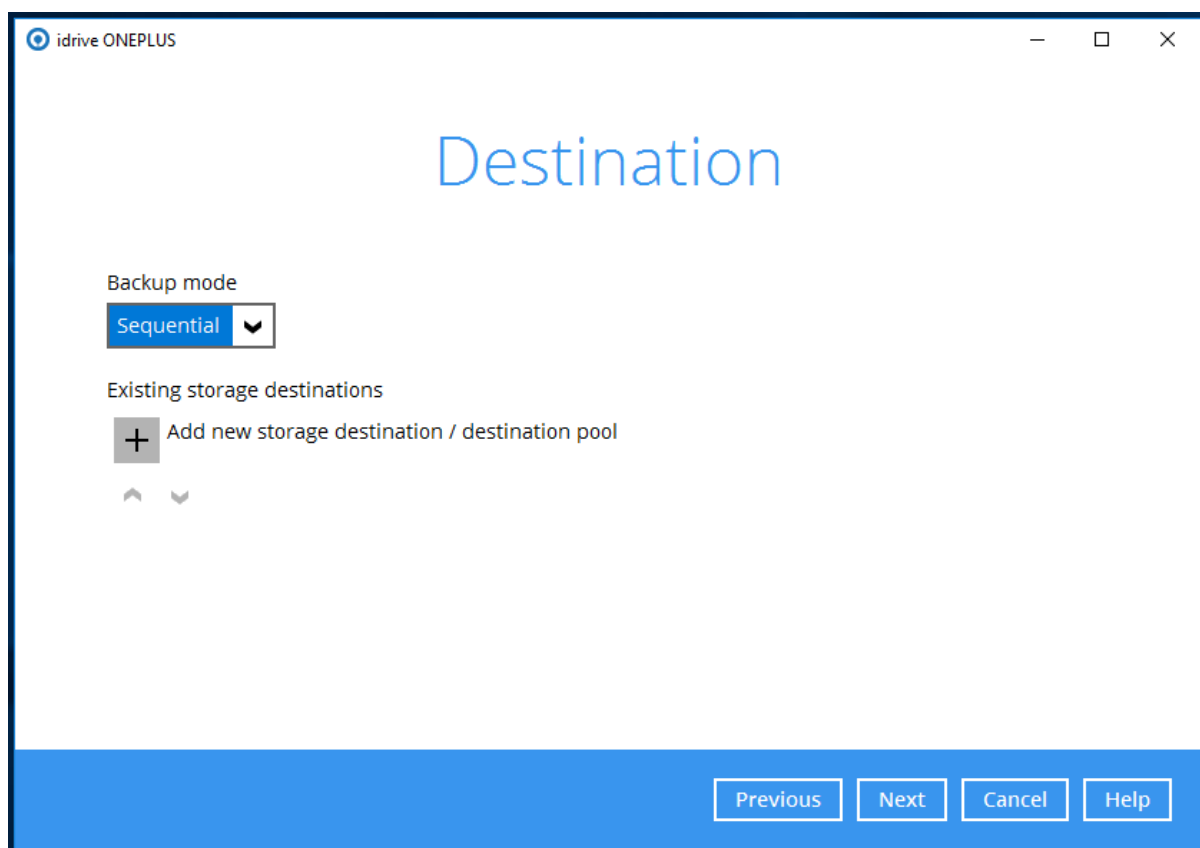
the Advanced Backup Source menu.



11. In the Backup Source menu, click **Next** to proceed.
12. In the Schedule menu, you can configure a backup schedule for backup job to run automatically at your specified time interval. Click **Add** to add a new schedule. Then, click **Next** to proceed.




13. The **Destination** window will appear.

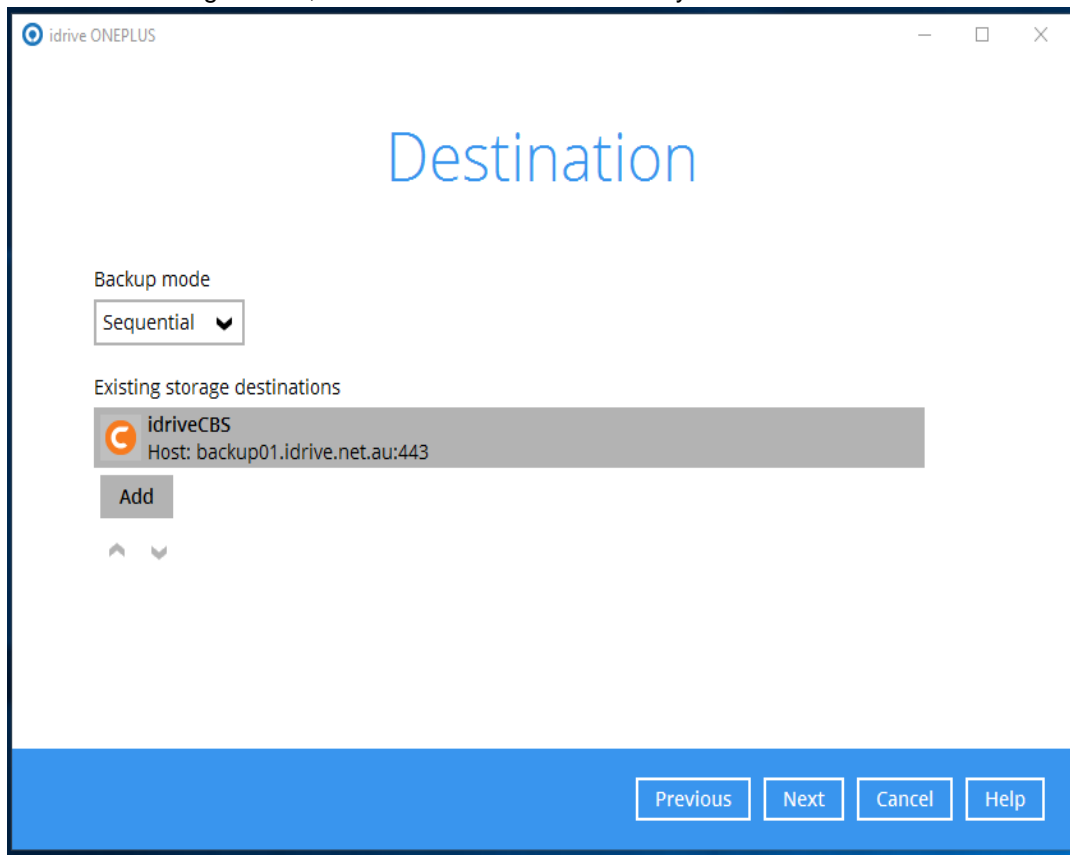


Select **Backup mode** as **Sequential** (default value) – run backup jobs to each backup destination one by one

- ☒ **Concurrent** – run backup jobs to all backup destinations at the same time (not recommended)

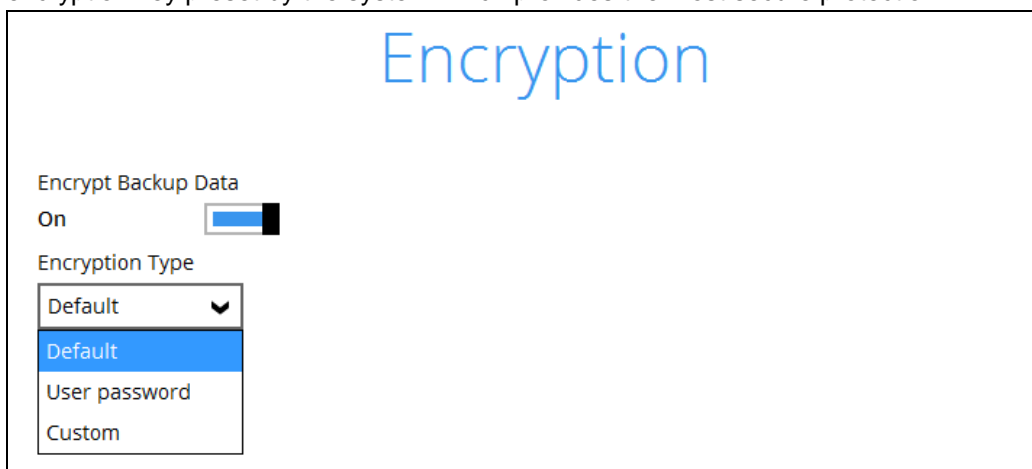
To select a backup destination for the backup data storage, click  next to **Add new storage destination / destination pool**.

14. Select the destination type and destination storage. Then, click OK to proceed.  
In the **New Storage Destination / Destination Pool** window, select the idrive CBS as destination storage. Then, click **Next and OK** to confirm your selection.



15. Click **Next** on the Destination menu page to proceed.

1. In the Encryption window, the default **Encrypt Backup Data** option is enabled with an encryption key preset by the system which provides the most secure protection.



You can choose from one of the following three Encryption Type options:

- **Default** – an encryption key with 44 alpha numeric characters will be randomly generated by the system  
**(NOT RECOMMENDED)**
- **User password** – the encryption key will be the same as the login password of your idrive ONE-PLUS at the time when this backup set is created. Please be reminded that if you change the idrive ONE-PLUS login password later, the encryption keys of the backup sets previously created with this encryption type will remain unchanged.  
**(Must be safely stored) You cannot retrieve data if you forget your password.**
- **Custom** – you can customize your encryption key, where you can set your own algorithm, encryption key, method and key length.

idrive ONEPLUS

## Encryption

Encrypt Backup Data  
On ☒

Encryption Type  
Custom ▼

Algorithm  
▼

Encryption key  
●●●●●●

Re-enter encryption key  
●●●●●●

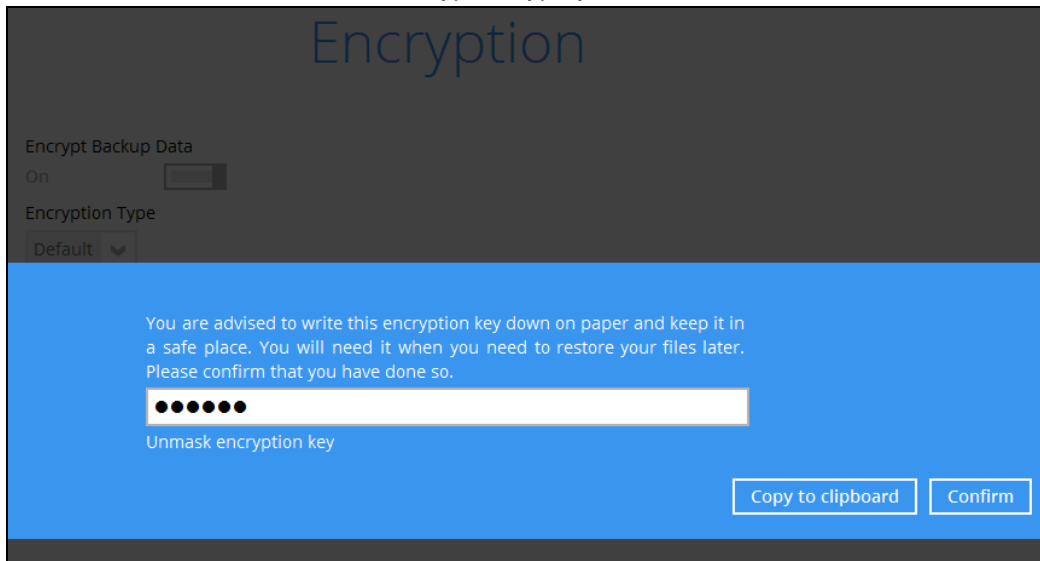
Method  
☒ ECB ☐ CBC

Key length  
☒ 128-bit ☐ 256-bit

Previous Next Cancel Help

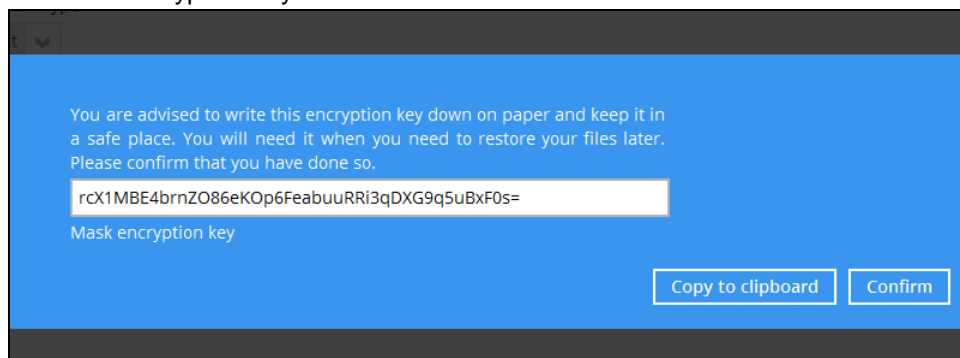
**(Must be safely stored) You cannot retrieve data if you forget your encryption key**

2. If you have enabled the Encryption Key feature in the previous step, the following pop-up window shows, no matter which encryption type you have selected.



The pop-up window has the following three options to choose from:

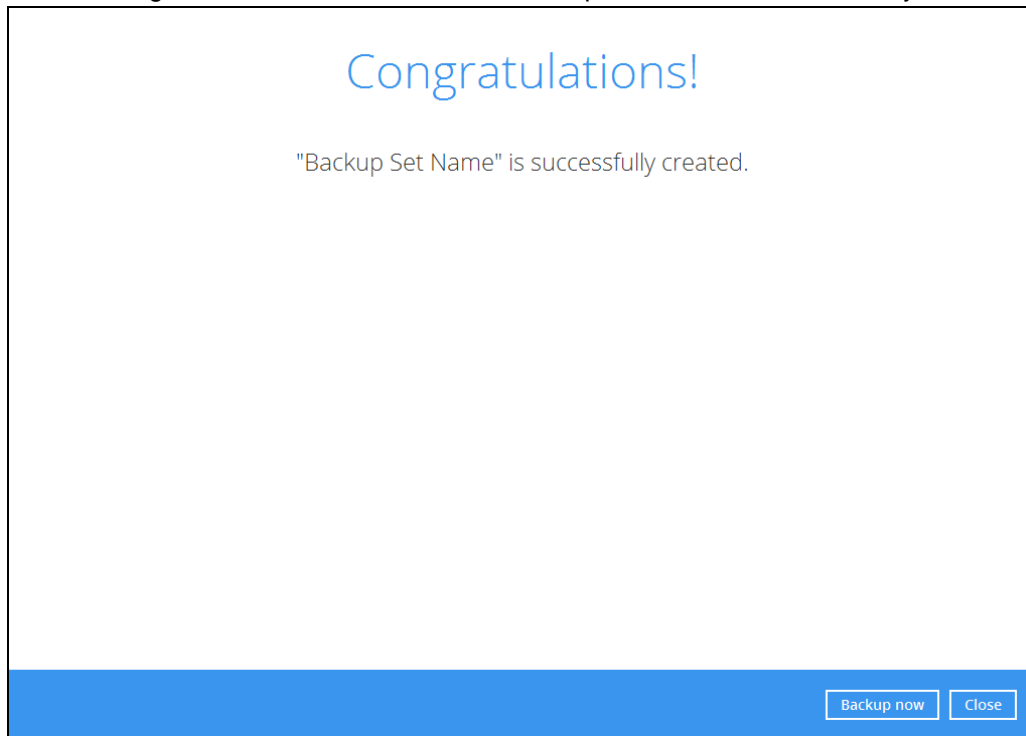
- **Unmask encryption key** – The encryption key is masked by default. Click this option to show the encryption key.



- **Copy to clipboard** – Click to copy the encryption key, then you can paste it in another location of your choice.
- **Confirm** – Click to exit this pop-up window and proceed to the next step.

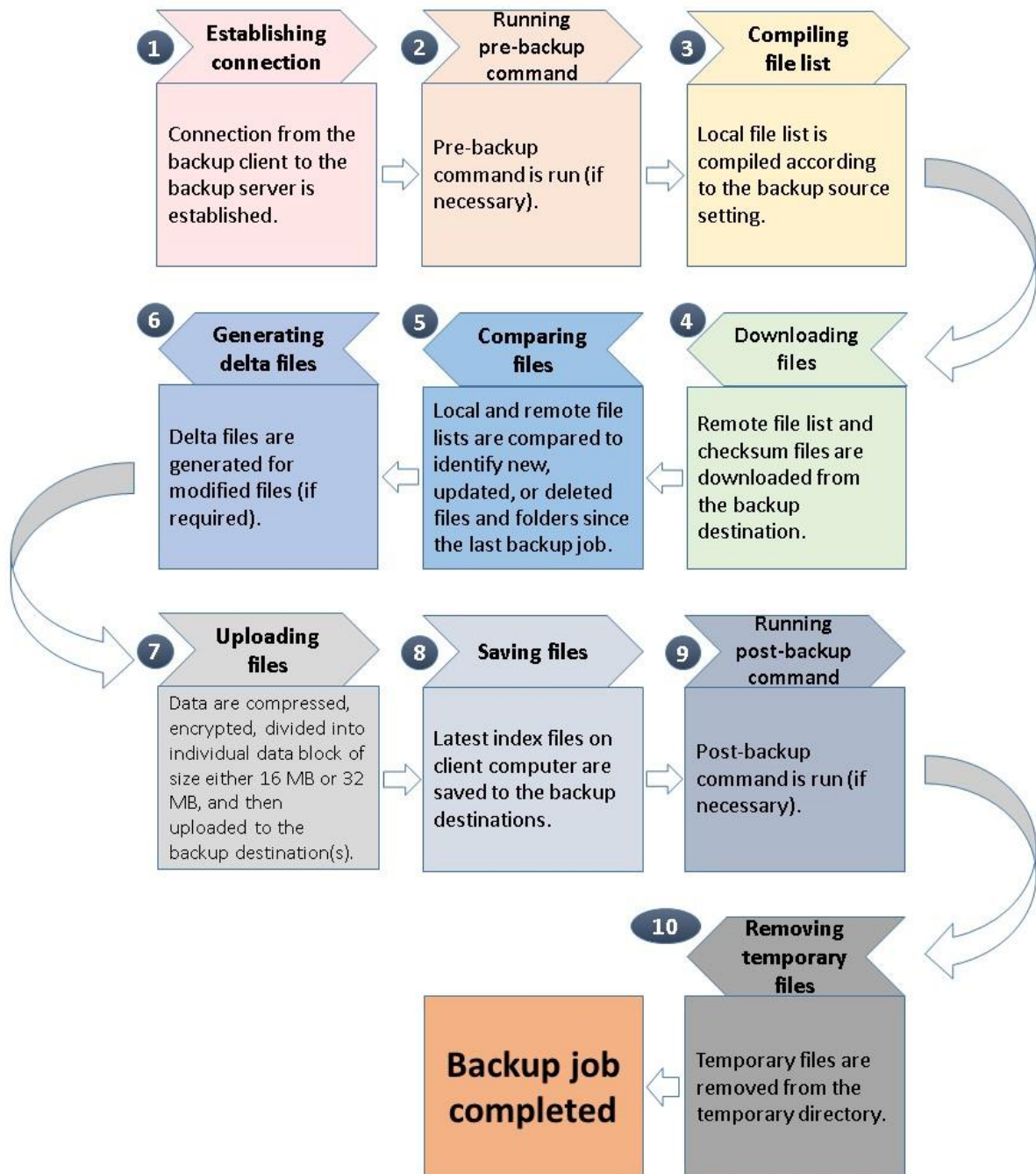


16. The following screen shows when the new backup set is created successfully.



## 6 Overview on Backup Process

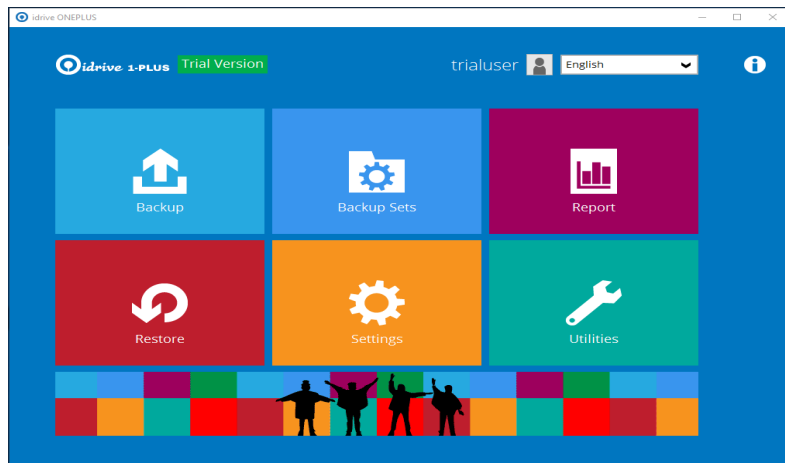
The following steps are performed during a file backup job:



## 7 Running Backup Jobs

### Login to idrive ONE-PLUS

Login to the idrive ONE-PLUS application.

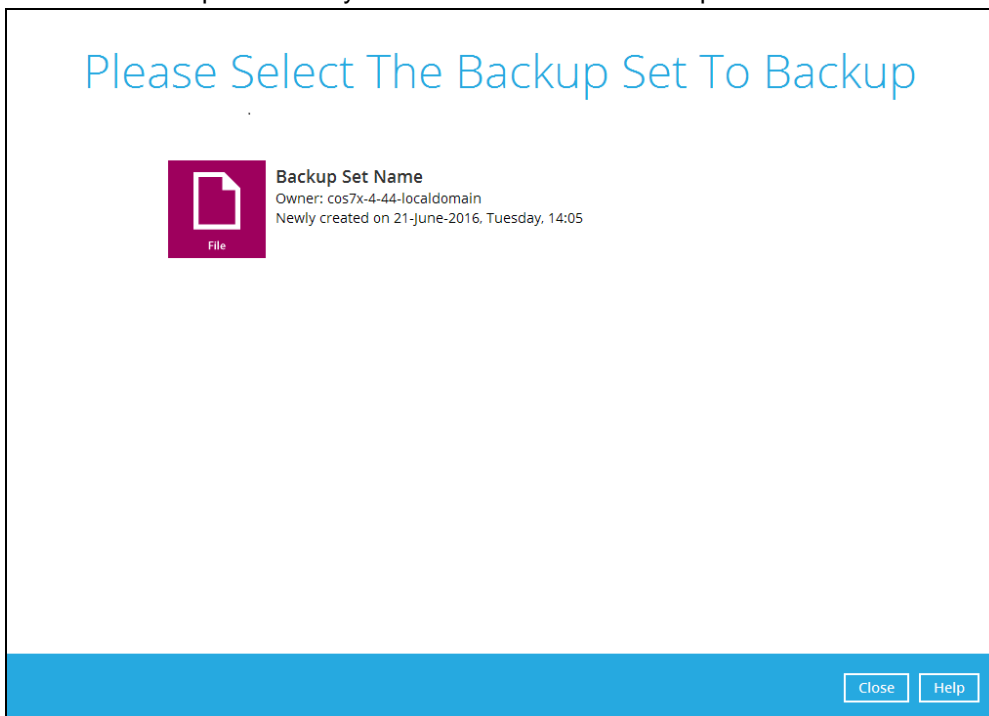


### Start a Manual Backup

17. Click **Backup** on the main interface of Idrive ONE-PLUS.



18. Select the backup set which you would like to start a backup for.



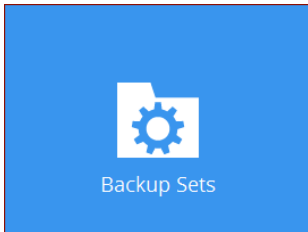
19. The Choose Your Backup Options screen will appear. If you would like to modify the In-File Delta type, Destinations and Retention Policy settings, click **Show advanced option**.

The screenshot shows a window titled 'idrive ACLICK' with a dark header bar. The main content area is white and titled 'New Storage Destination / Destination Pool' in blue text. Below the title, there is a 'Name' label followed by a text input field containing 'idrivestoragepool1'. Underneath is a 'Destination storage' label followed by a dropdown menu showing 'idrivestoragepool1' with a blue background and a downward arrow. Below the dropdown is a checkbox labeled 'Access the Internet through proxy', which is currently unchecked. At the bottom of the window, there is a blue bar containing three buttons: 'OK', 'Cancel', and 'Help'. Below this bar, in a dark blue footer, are four buttons: 'Previous', 'Next', 'Cancel', and 'Help'.

20. Click **Backup** to start the backup.

## Configure Backup Schedule for Automated Backup

21. Click **Backup Sets** on the idrive ONE-PLUS main interface.



22. Select the backup set that you would like to create a backup schedule for.
23. Click **Backup Schedule**. Then, create a new backup schedule by clicking **Add**.

Configure the backup schedule settings. Then, click **OK** to proceed.

A dialog box titled "New Backup Schedule" with a dark header bar. The header bar contains a red square icon, the text "Backup Set Name", and the text "Schedule". The main area of the dialog box is white and contains the following fields:

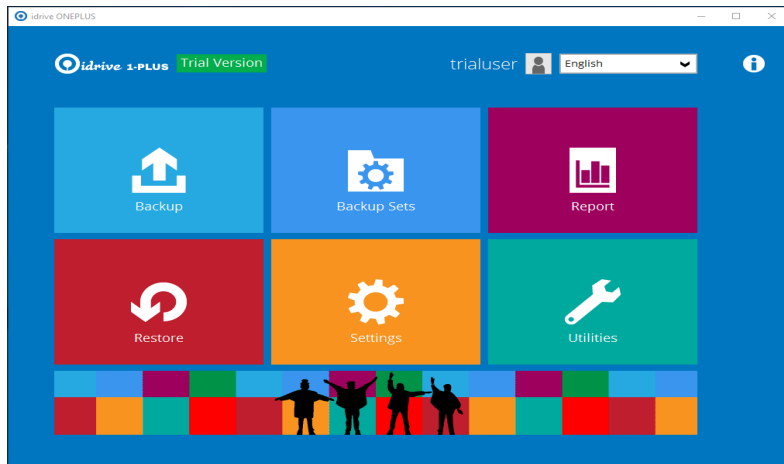
- Name: A text input field with "Daily-1" entered.
- Type: A dropdown menu with "Daily" selected.
- Start backup at: A time selection field with "14" and "18" selected.
- Stop: A dropdown menu with "until full backup completed" selected.
- Run Retention Policy after backup: An unchecked checkbox.

At the bottom right of the dialog box, there are three buttons: "OK", "Cancel", and "Help".

24. Click **Save** to confirm your settings.

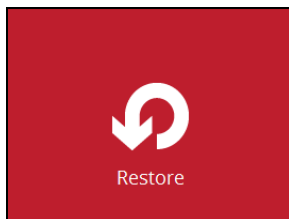
## 8 Restoring Data

### Login to idrive ONE-PLUS

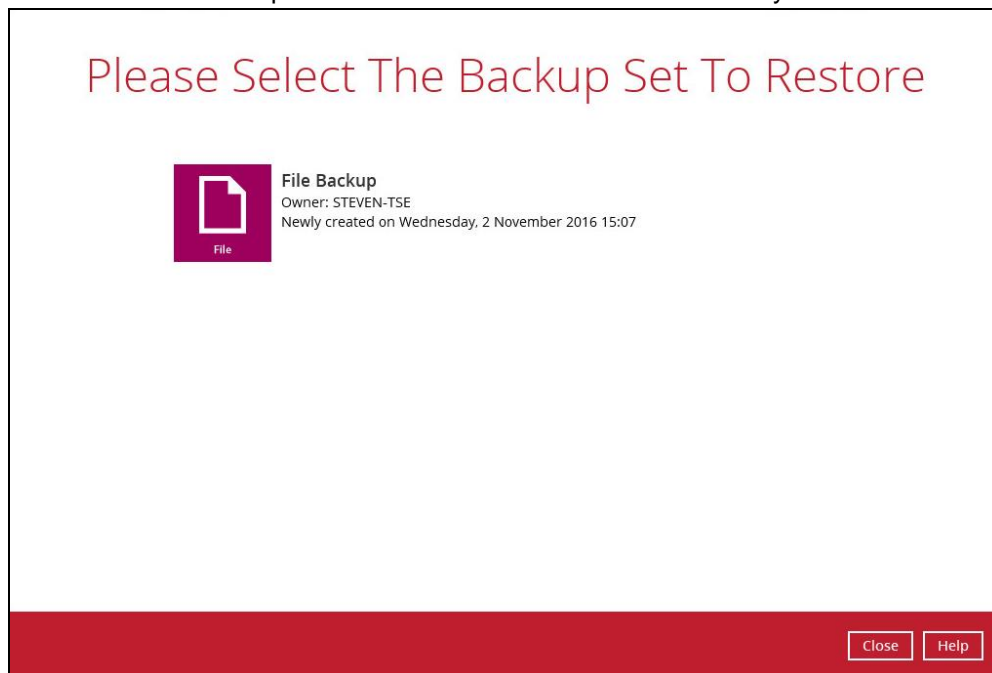


### Restore Data

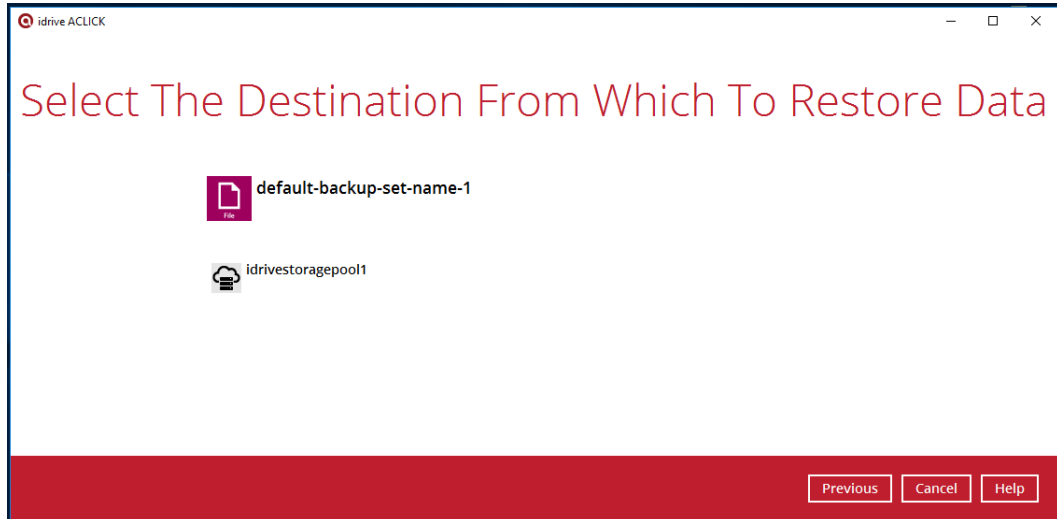
25. Click **Restore** on the idrive ONE-PLUS main interface.



26. After logging in to your backup account successfully, you should see a screen showing all the available backup sets for restore. Double click on the one you would like to restore.



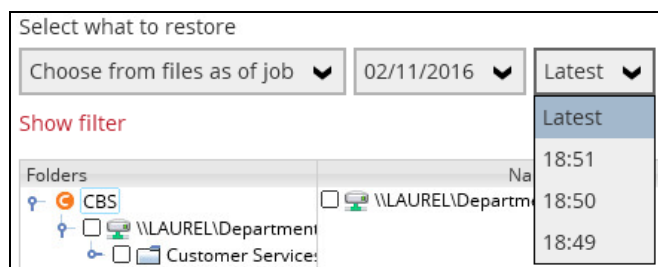
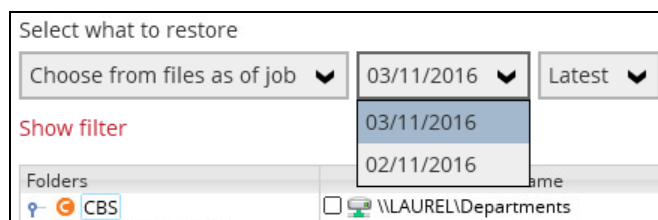
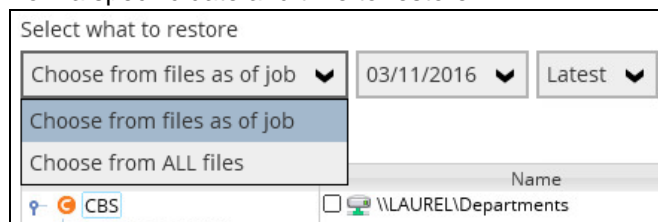
27. Click on the location from which you would like to restore the data from.



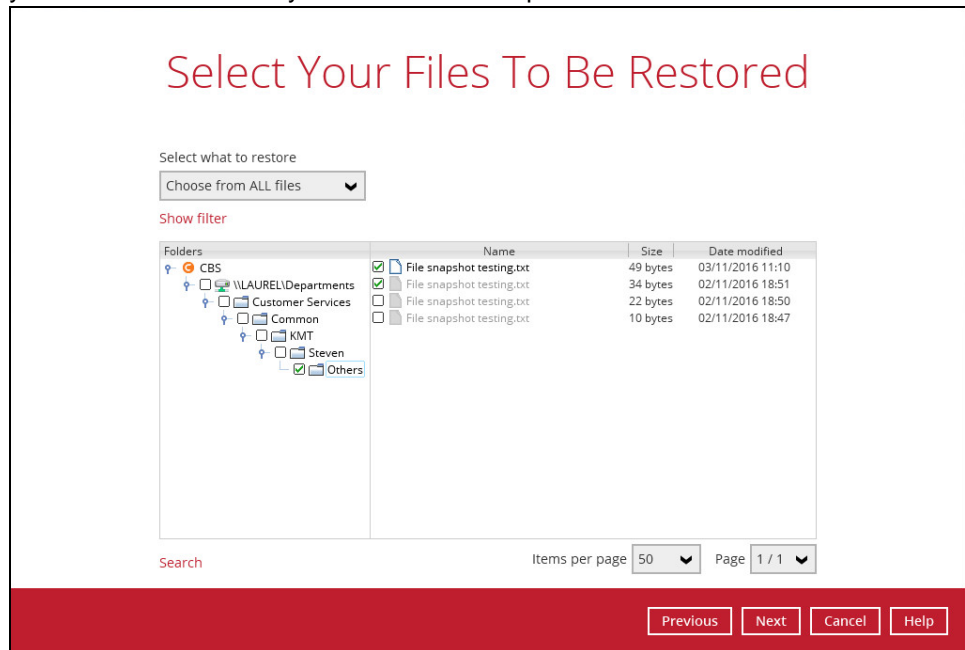
28. Select to restore files from a specific backup job, or from all files available, then select the files or folders that you would like to restore.

There are two options from the **Select what to restore** drop-down menu:

- **Choose from files as of job** – this option allows you to select a backup version from a specific date and time to restore.



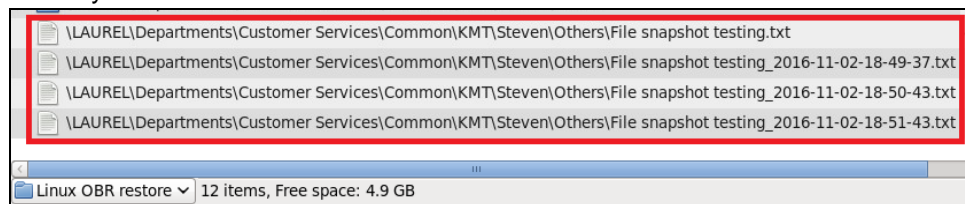
- **Choose from ALL files** – this option allows you to restore all the available backup versions for this backup set. Among all the available backup versions, you can even select only some of the backup versions of a file to restore.



Below is an example showing all the available backup versions of the file **File snapshot testing.txt**. The latest version is shown in solid black color and all the previous versions are shown in grey color. You can identify the file version from the **Date modified** column.

	Name	Size	Date modified
<input checked="" type="checkbox"/>	File snapshot testing.txt	49 bytes	03/11/2016 11:10
<input checked="" type="checkbox"/>	File snapshot testing.txt	34 bytes	02/11/2016 18:51
<input type="checkbox"/>	File snapshot testing.txt	22 bytes	02/11/2016 18:50
<input type="checkbox"/>	File snapshot testing.txt	10 bytes	02/11/2016 18:47

When the restore is done, you will see all the selected backup versions in the restore destination. The latest backup version has the file name as the original file, while the previous versions have the time stamps added to their file names for easy identification.



29. Click **Next** to proceed when you are done with the selections.



30. Select to restore the files to their **Original location**, or to an **Alternate location**, then click **Next** to proceed.

- **Original location** – the backed up data will be restored to the computer running the idrive ONE-PLUS under the same directory path as on the machine storing the backup source. For example, if the backup source files are stored under **root/Downloads** folder, the data will be restored to **root/Downloads** as well.

Choose Where The Files To Be Restored

Restore files to

☒ Original location

☐ Alternate location

[Show advanced option](#)

- **Alternate location** – you can choose to restore the data to a location of your choice on the computer where idrive ONE-PLUS is running.

Choose Where The Files To Be Restored

Restore files to

☐ Original location

☒ Alternate location

[Show advanced option](#)

**Change Path**

Look in:

Folder name:

Files of type:

31. Click **Show advanced option** to configure other restore settings:

Choose Where The Files To Be

Restore files to

☐ Original location

☒ Alternate location

Show advanced option

☐ Restore file permissions

☐ Delete extra files

☒ Follow Link

☐ Resolve Link

Hide advanced option

• **Restore file permissions**

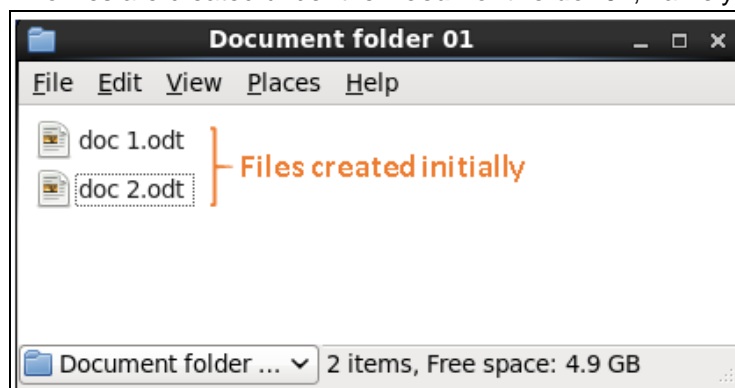
By enabling this option, file permissions of the operating system files will be restored. File permission defines, for example, the right to view or change a file by the system owner/group/individual. If file permission is not restored properly, there is a potential risk that the restored data could be viewed by group/individual who is not supposed to have the access to.

• **Delete extra files**

By enabling this option, the restore process will attempt to synchronize the selected restore source with the restore destination, making sure the data in the restore destination is exactly the same as the restore source. Any data created after backup will be treated as “extra files” and will be deleted from the restore source if this feature is enabled.

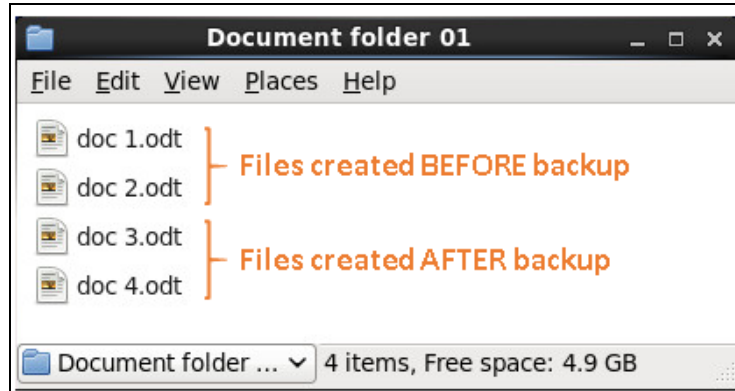
**Example:**

- i) Two files are created under the **Document folder 01**, namely doc 1 & doc 2.

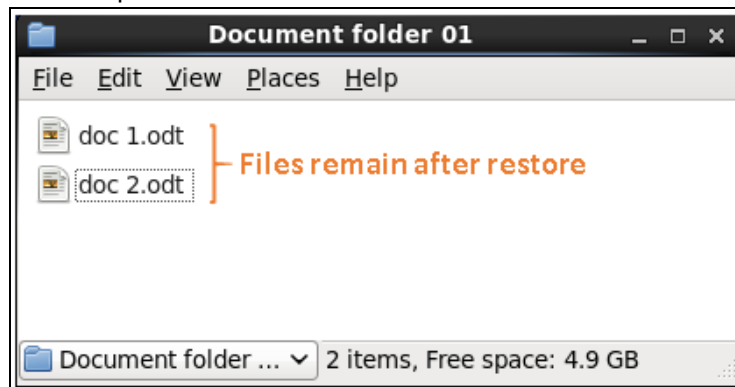


- ii) A backup is performed for folder **Document folder 01**.

- iii) Two new files are created, namely doc 3 & doc 4.



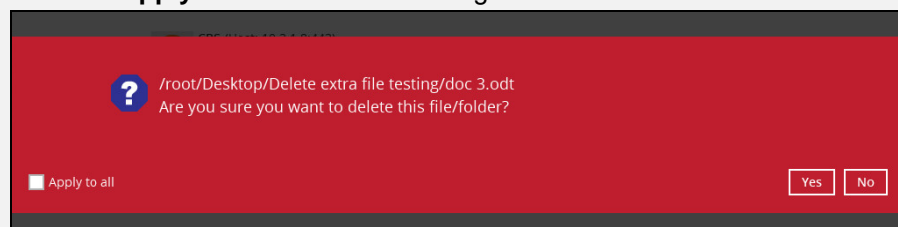
- iv) A restore is performed for the **Document folder 01**, with **Delete extra files** option enabled.
- v) Since doc 3 & doc 4 have never been backed up, therefore they will be deleted from **Document folder 01**, leaving only the two files that have been backed up.



### WARNING

Please exercise extra caution when enabling this feature. Consider what data in the restore source has not been backed up and what impact it would cause if those data is deleted.

Prior to the data restore and synchronization, a warning message shows as the one shown below. Only clicking **Yes** will the "extra file" be deleted. You can click **Apply to all** to confirm deleting all the "extra files" at a time.



◉ **Follow Link (Enabled by default)**

When this option is enabled, not only the symbolic link will be restored, the directories and files that the symbolic link links to will also be restored.

The table below summarizes the behaviors when a restore is performed with different settings.

Follow Link	Restore to	Behavior
Enabled	Original location	Symbolic link is restored to the original backup location. Target directories or files are also restored to the original backup location.
	Alternate location	Symbolic link is restored to the location specified. Target directories or files are also restored to the alternate location specified.
Disabled	Original location	Symbolic link is restored to the original backup location. Target directories or files are NOT restored to the original backup location.
	Alternate location	Symbolic link is restored to the location specified. Target directories or files are NOT restored to the alternate location specified.

◉ **Resolve Link (Only for restoring to Alternate Location)**

This option must be used in conjunction with the **Follow Link** option. When this option is enabled, the symbolic link, as well as the directories and files that the symbolic link links to will also be restored in the alternate location you have chosen. That means the symbolic link will point to the alternate location instead of the original location.

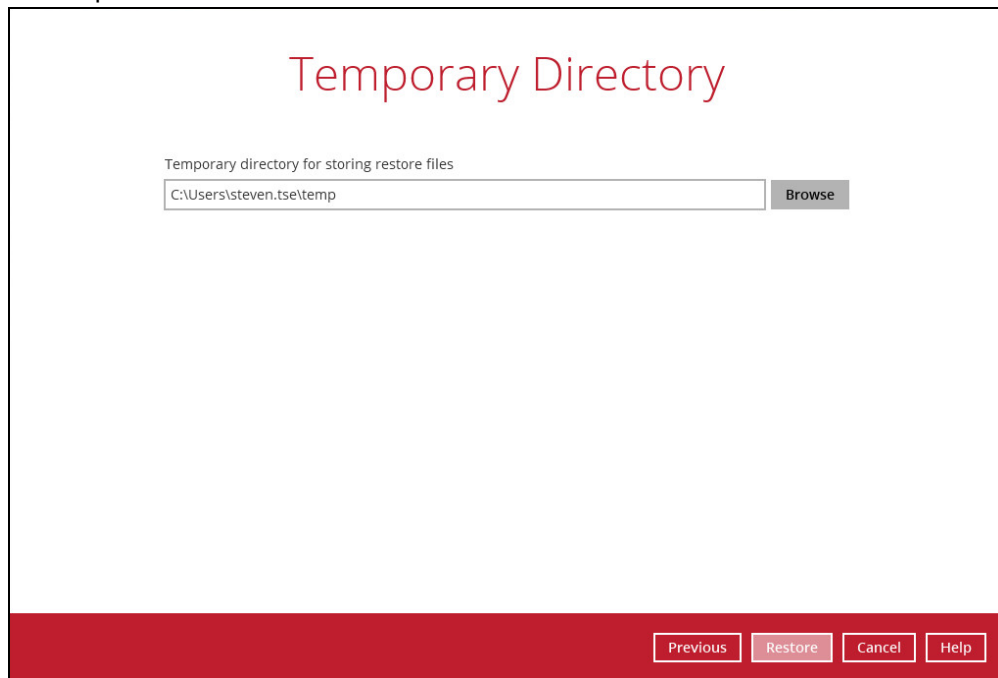
The table below summarizes the behaviors when a restore is performed with this option turned on and off.

Resolve Link	Behavior
Enabled	Symbolic link is restored to the alternate location specified, with its target directories and files also restored to the same location in their relative path. Target of the link is updated to the new relative path. In other word, the link now points to the new alternate location.
Disabled	Symbolic link is restored to the alternate location specified, with its target directories and files also restored to the same location in their relative path. However, target of the link is NOT updated to the new

relative path. In other word, the link still points to the original location.

32. Click **Next** to proceed with you are done with the settings.
33. Select the temporary directory for storing temporary files, such as delta files when they are being merged.

By default, the temporary files are stored under the temp directory of the user profile directory. However, there is a chance that the same directory path does not exist in the computer you are running the idrive ONE-PLUS. In that case, you will have to click **Browse** to define a new location for storing the temporary files, otherwise you will not be able to perform a restore.



Temporary Directory

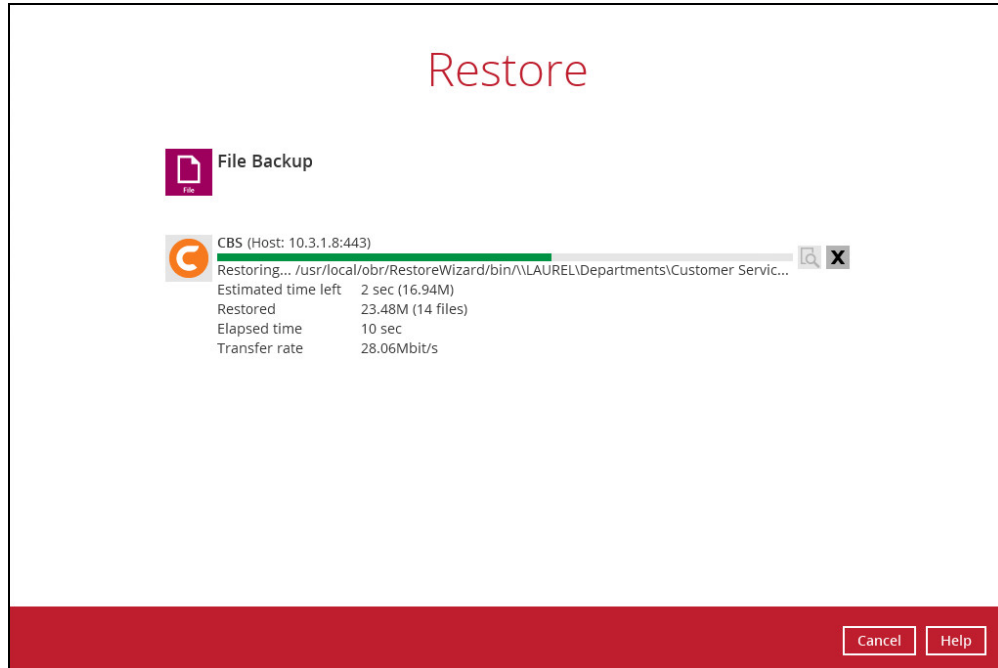
Temporary directory for storing restore files

C:\Users\steven.tse\temp Browse

Previous Restore Cancel Help

34. Click **Restore** to start the restore.

35. You will see a screen like the one shown below with the restore progress bar.



36. The progress bar shows **Restore Completed Successfully** when the restore is done. Click **Close** to exit the confirmation screen.