



THE UNIVERSITY OF  
**SYDNEY**

# The University of Sydney Business School CBD Campus

Level 17, 133 Castlereagh Street, Sydney

**Location** 133 Castlereagh Street - Stockland building to access Sydney University CBD Campus

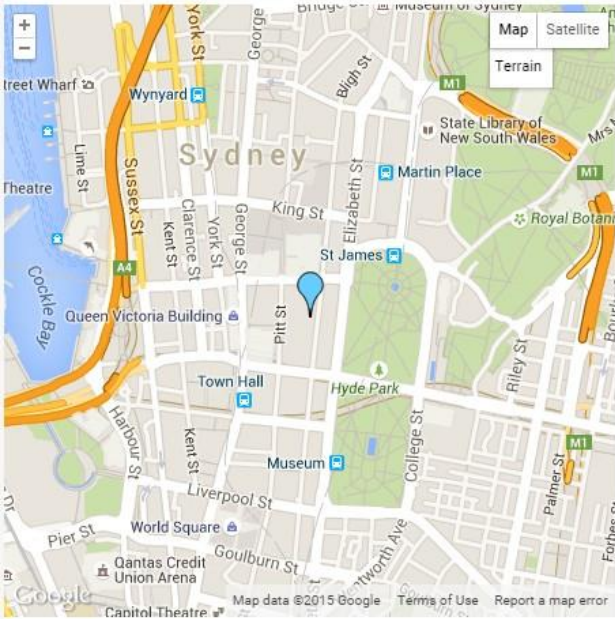
The University of Sydney CBD campus is located within the Stockland building at 133 Castlereagh Street. The building can be accessed from Castlereagh Street and Pitt Street. It is part of the Piccadilly complex. CBD Campus is open 8am-10pm Monday to Friday, and 8am-6pm Saturday and Sunday during semester.

- 133 Castlereagh Street entrance ('Piccadilly' on Googlemaps) via the ground floor foyer.
  - **Opening hours 7am-6pm (Monday-Friday)**
  - Use lifts A to F - the right hand set of lifts - to level 17
  - If coming from St James Station, it is the street to your left after Elizabeth St
  - Concierge can assist with directions in the foyer
- 210 Pitt Street entrance ('Piccadilly Shopping Centre' on Googlemaps)
  - **Opening Hours: 5.30am-10pm (Monday-Sunday)**
  - Take the escalators to the first-floor "Lunch House Food Court", turn right 180degrees to walk towards Pitt St direction
  - Walk past the Physiotherapist and take the left hand set of lifts - Lifts A to F - to level 17
  - If coming from Town Hall Station walk through The Galleries or Hilton Hotel

Any issues with access please call campus reception on 8627 4900

<https://goo.gl/maps/mNidBVpmDXFcFT8j7>

### LOCATION GUIDE

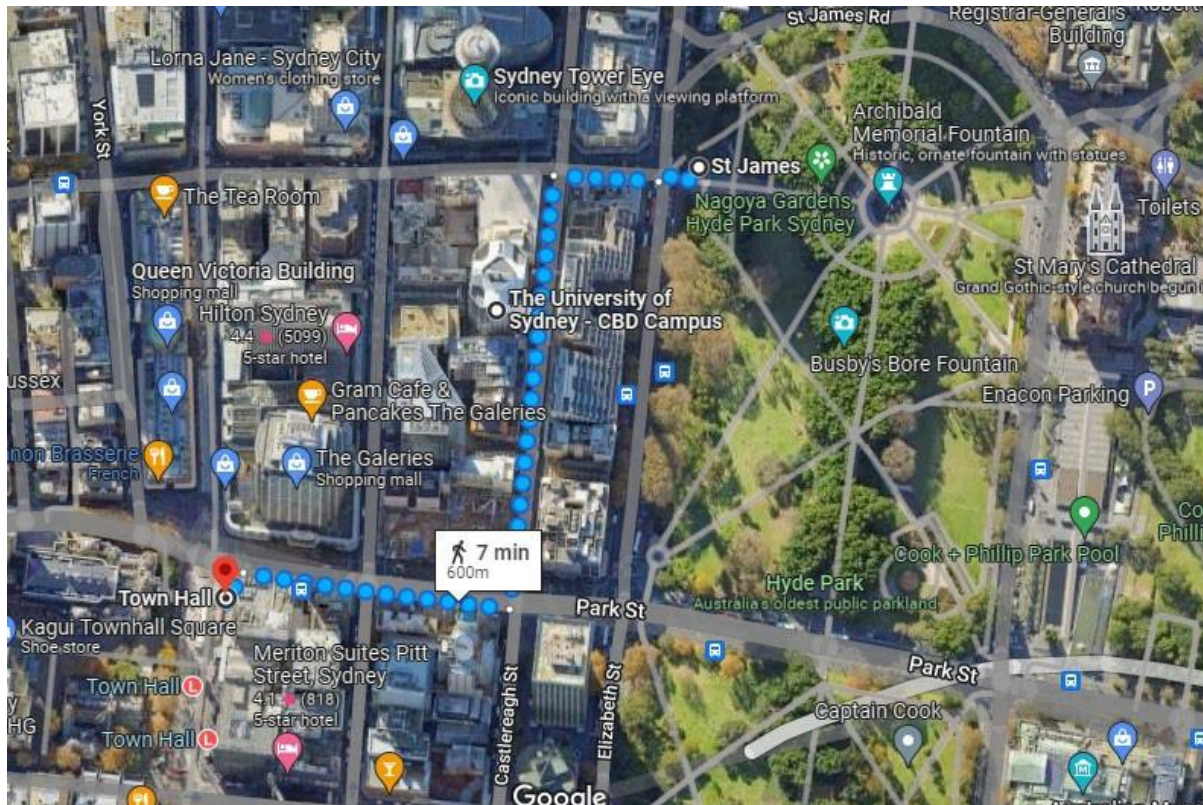


133 Castlereagh St and 222 Pitt St, Sydney are located in the mid-town precinct of the Sydney CBD and are both within close proximity to Town Hall and St James train stations, Pitt Street Plaza, Hyde Park plus the Sheraton on The Park and Hilton Hotels.

AMENITIES	WALKING TIMES
1 Town Hall Station	6 minutes
2 St James Station	5 minutes
3 Pitt Street Plaza	5 minutes
4 Hyde Park	4 minutes
5 The Domain	10 minutes
6 Sheraton on The Park Hotel	3 minutes
7 Hilton Hotel	5 minutes



## Transport



### By train

The nearest train stations are [Town Hall Station](#) or [St James Station](#). Trains to Town Hall Station and St James run regularly from Central Station. See the route on the map above.

### By bus

The nearest bus stops are located on Castlereagh Street, Elizabeth Street after Park Street as identified on the map by the bus stop icons. Several bus routes are available into the CBD.

### By Light rail

The nearest Light Rail stop is [Townhall Light Rail](#).

To best plan your trip by public transport, go to: [Transport NSW](#)

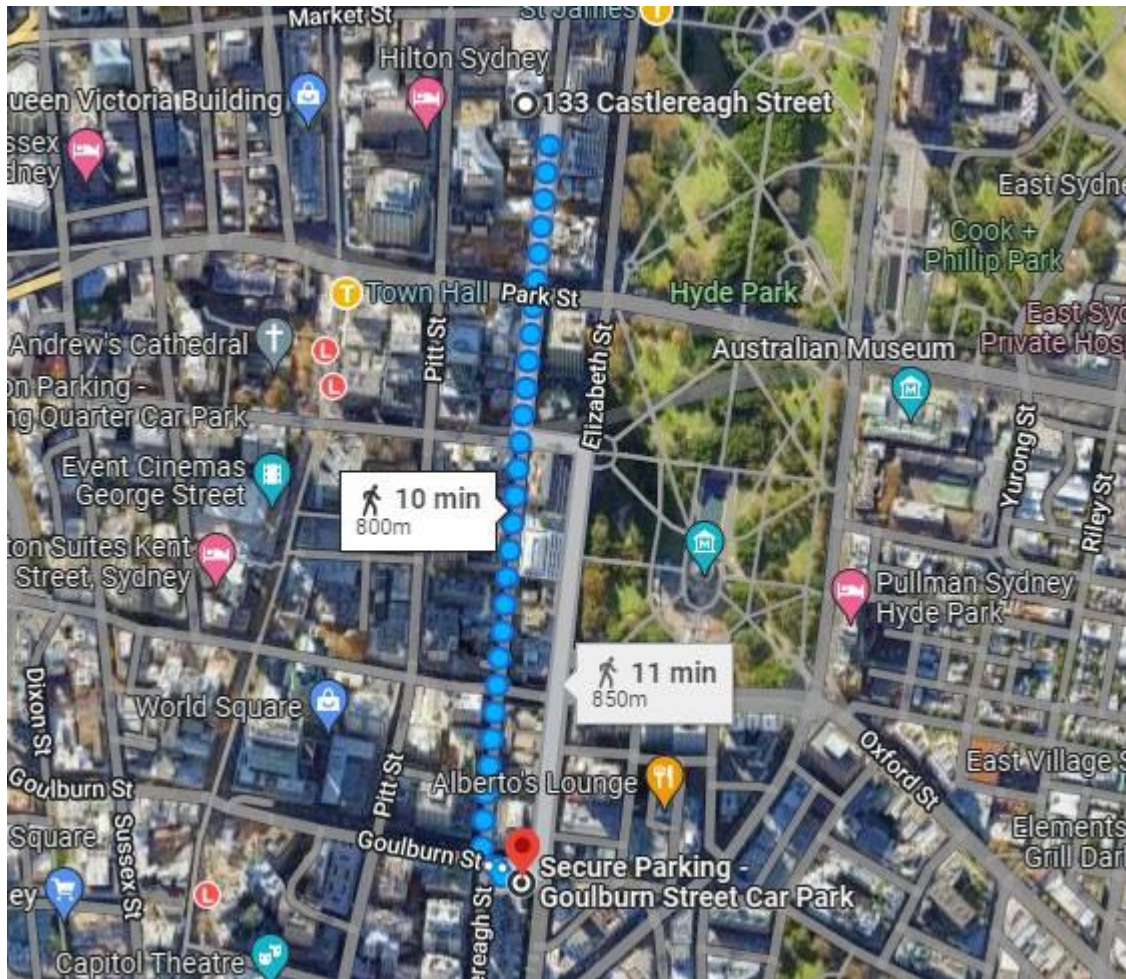
### Driving and CBD parking

133 Castlereagh Street has on site paid parking. Piccadilly Secure Parking basement parking the building provides parking spaces and we suggest pre-booking online to avoid a high cost

[Secure Parking Piccadilly](#)

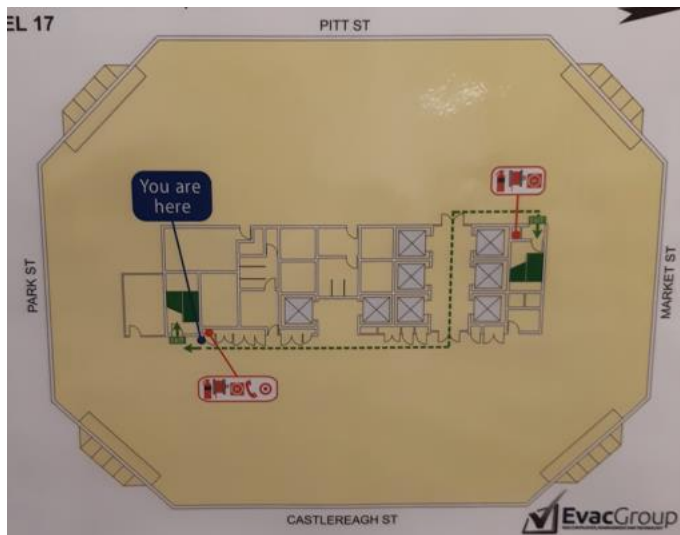
The cheapest CBD parking is available at [GOULBURN STREET CAR PARK](#) located at 101 Goulburn Street, Sydney and we also suggest pre-booking online. The walk from Goulburn Street is 10minutes. See image below.





## Emergency Evacuation and Assembly Area

There are two fire stairs. The Assembly Area is in Hyde Park, behind the entrance to St James station.



## First Aid

Call Matt Eriksson and Harry Simpson on 8627 4900. This phone will divert to the mobile of whichever is at the Reception Desk.