

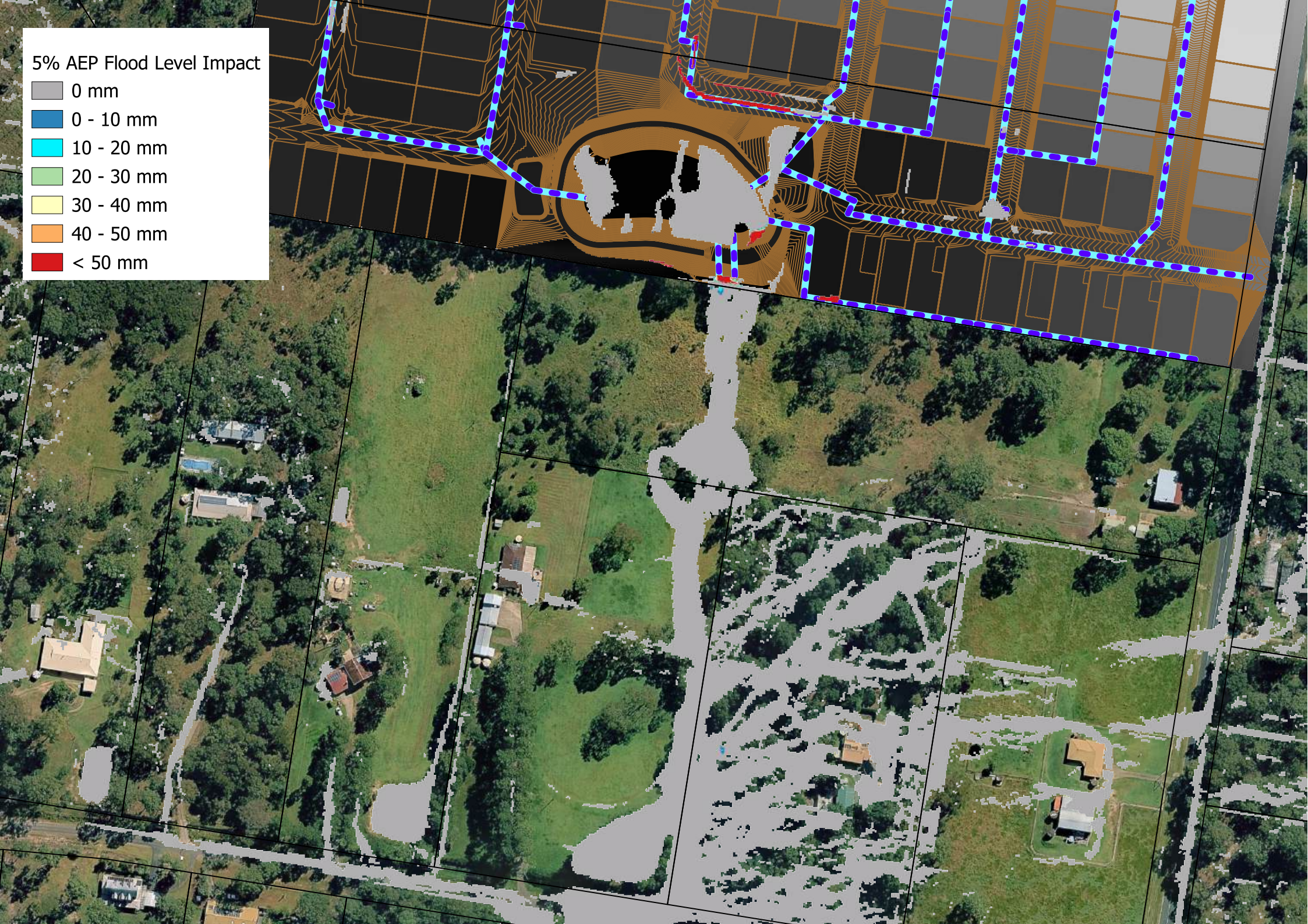
0.5EY Flood Level Impact

- 0 mm
- 0 - 10 mm
- 10 - 20 mm
- 20 - 30 mm
- 30 - 40 mm
- 40 - 50 mm
- < 50 mm



5% AEP Flood Level Impact

- 0 mm
- 0 - 10 mm
- 10 - 20 mm
- 20 - 30 mm
- 30 - 40 mm
- 40 - 50 mm
- < 50 mm



1% AEP Flood Level Impact

- 0 mm
- 0 - 10 mm
- 10 - 20 mm
- 20 - 30 mm
- 30 - 40 mm
- 40 - 50 mm
- < 50 mm

