



6 October 2023

406 Park Ridge Pty Ltd ATF 406 Park Ridge Unit Trust
Suite 1/220 Boundary Street
Spring Hill QLD 4000

RE: 399 Park Ridge Road, Park Ridge – Ecological Assessment

A development application was lodged for the development of the above site for residential purposes involving the reconfiguration of 1 lot into 63 lots including a park and stormwater detention. The site is not within a Koala Priority Area however the southern portion of the site is mapped as a Core Koala Habitat area. The proposed development layout retained the majority of this area in a park area to retain as many trees as possible in this area of the site. However, Council has requested that a portion of this park be available for active recreation and therefore the trees in this part of the site are to be removed.

An updated tree retention plan and tree table detailing the trees to be removed and retained are attached.

An updated tree retention plan has been prepared for the proposed development (Figure 5a-d) that shows the proposed development footprint in relation to the trees and their associated tree protection zones (TPZ).

A total of 596 trees with have been surveyed within the site. The trees comprised 533 native species (but in some cases planted non-indigenous trees), 6 dead trees and 57 exotic trees. A total of 5 trees on site had a diameter at breast height (DBH) of ≥ 700 mm and are therefore considered to be habitat trees, with Tree 22 a Scribbly Gum, having the largest DBH of 925 mm. The details of each tree presented in Appendix A.

The proposed development layout provides for the retention of 281 trees in the southern portion of the site. The remaining 315 trees across the site will be removed to facilitate the construction of new allotments, roads, services, stormwater management infrastructure and active park area. This includes the removal of the 5 habitat trees.

It is proposed to remove 76 non-juvenile Koala habitat trees from the mapped Core Koala Habitat Area on the site with 198 non-juvenile Koala habitat trees being retained.

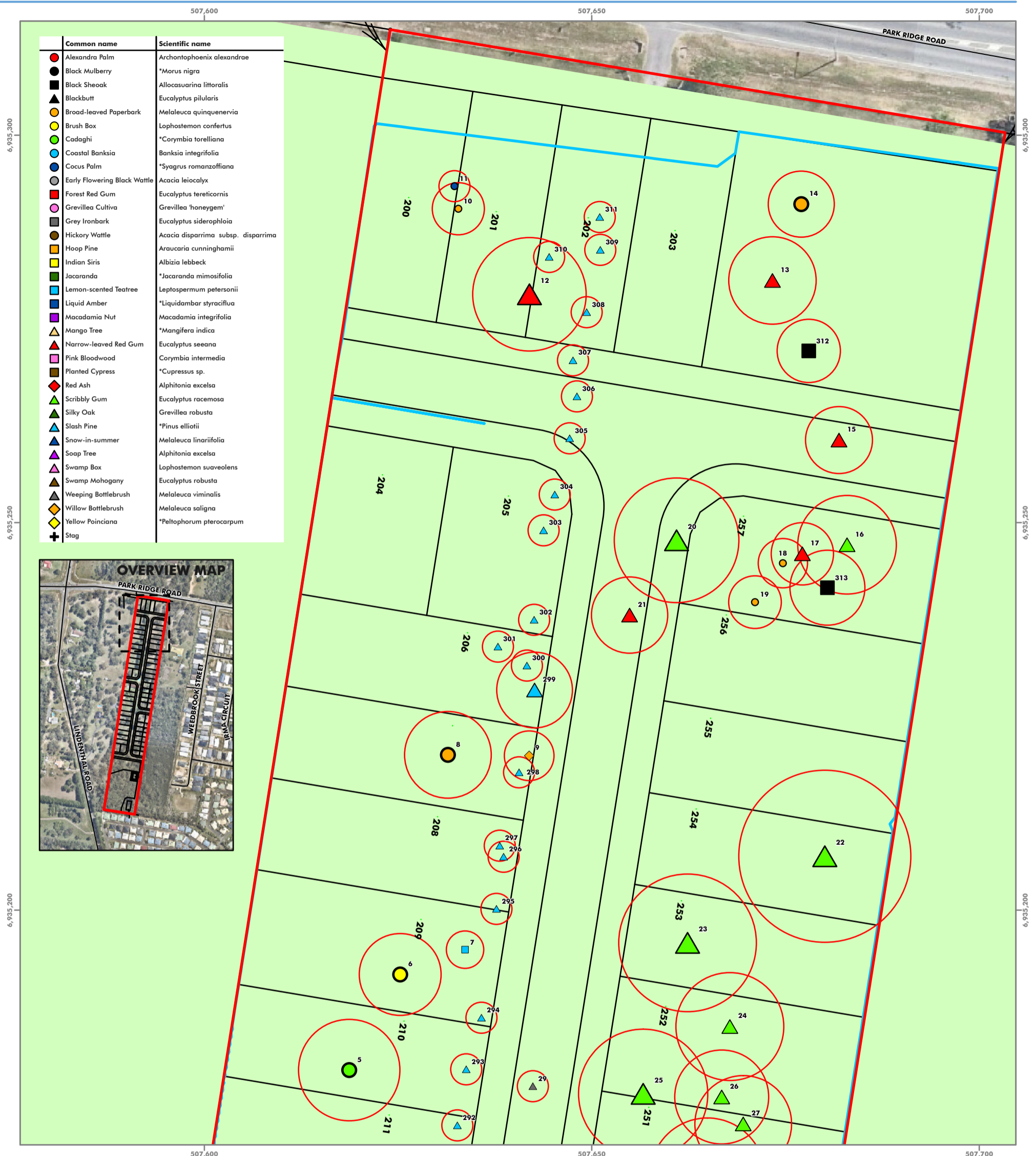
If an offset is required for this loss of Koala habitat trees, the Queensland Government financial settlement offset calculator indicates that a financial contribution of \$54,492.91 would be required. This is based on the stipulated area of 0.004 ha per Koala habitat tree as input to the calculator.

If you have any queries or questions in relation to any aspect of the information presented in this letter, please do not hesitate to contact the undersigned on 0448 899 649.

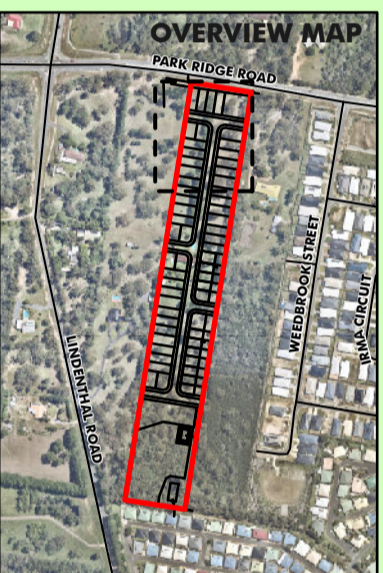
Kind regards



Steve Marston
Director | Principal Consultant
Eco Solutions & Management



Common name	Scientific name
Alexandra Palm	Archontophoenix alexandrae
Black Mulberry	*Morus nigra
Black Sheoak	Allocasuarina littoralis
Blackbutt	Eucalyptus pilularis
Broad-leaved Paperbark	Melaleuca quinquenervia
Brush Box	Lophostemon confertus
Cadaghi	*Corymbia torelliana
Coastal Banksia	Banksia integrifolia
Cocus Palm	*Syagrus romanzoffiana
Early Flowering Black Wattle	Acacia leiocalyx
Forest Red Gum	Eucalyptus tereticornis
Grevillea Cultiva	Grevillea 'honeymg'
Grey Ironbark	Eucalyptus siderophloia
Hickory Wattle	Acacia disparrima subsp. disparrima
Hoop Pine	Araucaria cunninghamii
Indian Siris	Albizia lebbek
Jacaranda	*Jacaranda mimosifolia
Lemon-scented Teatree	Leptospermum petersonii
Liquid Amber	*Liquidambar styraciflua
Macadamia Nut	Macadamia integrifolia
Mango Tree	*Mangifera indica
Narrow-leaved Red Gum	Eucalyptus seaana
Pink Bloodwood	Corymbia intermedia
Planted Cypress	*Cupressus sp.
Red Ash	Alphitonia excelsa
Scribbly Gum	Eucalyptus racemosa
Silky Oak	Grevillea robusta
Slash Pine	*Pinus elliotii
Snow-in-summer	Melaleuca linariifolia
Soap Tree	Alphitonia excelsa
Swamp Box	Lophostemon suaveolens
Swamp Mahogany	Eucalyptus robusta
Weeping Bottlebrush	Melaleuca viminalis
Willow Bottlebrush	Melaleuca saligna
Yellow Poinciana	*Peltophorum pterocarpum
Stag	



- Legend**
- Study Area
 - Proposed development
 - Extent of Earthworks
 - Road
- Retention**
- Tree to be removed
- OM-02.01 Vegetation management areas**
- Secondary vegetation management area

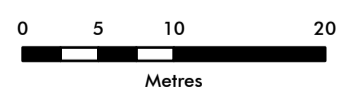
Tree DBH Legend

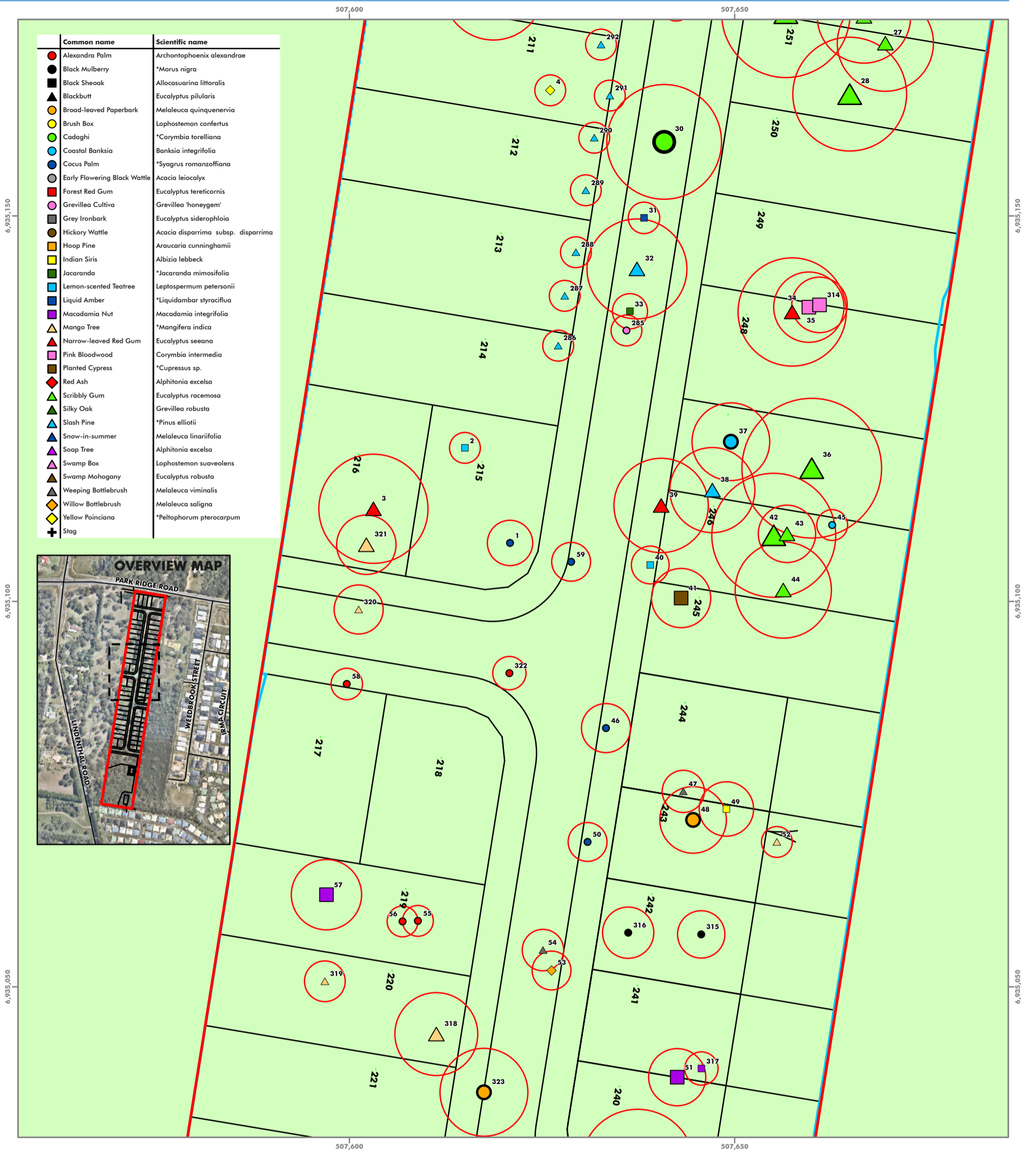
Symbol	DBH (mm)
● ■ ◆	100 - 290
● ■ ◆	300 - 590
● ■ ◆	600+

Figure 5a : Tree Retention Plan

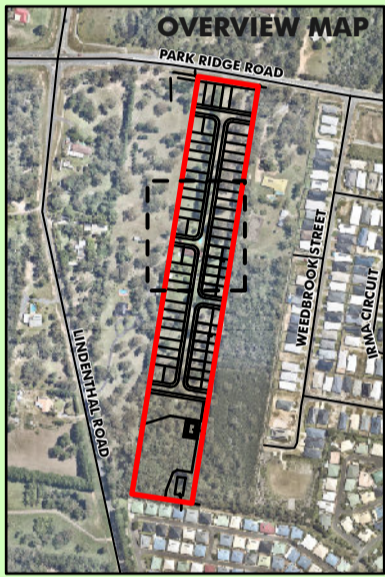
391-397 Park Ridge Road

Map Number: 22009_TRP_05A_D
 Date: 05 October 2023
 Map Projection: GDA2020 MGA Zone 56
 Data: Roads, DCDB - (c)DNRM 2022





Common name	Scientific name
Alexandra Palm	Archontophoenix alexandrae
Black Mulberry	*Morus nigra
Black Sheoak	Allocasuarina littoralis
Blackbutt	Eucalyptus pilularis
Broad-leaved Paperbark	Melaleuca quinquenervia
Brush Box	Lophostemon confertus
Cadaghi	*Corymbia torelliana
Coastal Banksia	Banksia integrifolia
Cocus Palm	*Syagrus romanzoffiana
Early Flowering Black Wattle	Acacia leiocalyx
Forest Red Gum	Eucalyptus tereticornis
Grevillea Cultiva	Grevillea 'honeymg'
Grey Ironbark	Eucalyptus siderophloia
Hickory Wattle	Acacia dispartima subsp. dispartima
Hoop Pine	Araucaria cunninghamii
Indian Siris	Albizia lebbek
Jacaranda	*Jacaranda mimosifolia
Lemon-scented Teatree	Leptospermum petersonii
Liquid Amber	*Liquidambar styraciflua
Macadamia Nut	Macadamia integrifolia
Mango Tree	*Mangifera indica
Narrow-leaved Red Gum	Eucalyptus seeana
Pink Bloodwood	Corymbia intermedia
Planted Cypress	*Cupressus sp.
Red Ash	Alphitonia excelsa
Scribbly Gum	Eucalyptus racemosa
Silky Oak	Grevillea robusta
Slash Pine	*Pinus elliotii
Snow-in-summer	Melaleuca linariifolia
Soap Tree	Alphitonia excelsa
Swamp Box	Lophostemon suaveolens
Swamp Mahogany	Eucalyptus robusta
Weeping Bottlebrush	Melaleuca viminalis
Willow Bottlebrush	Melaleuca saligna
Yellow Poinciana	*Peltophorum pterocarpum
Stag	



- Legend**
- Study Area
 - Proposed development
 - Extent of Earthworks
- Retention**
- Tree to be removed
- OM-02.01 Vegetation management areas**
- Secondary vegetation management area

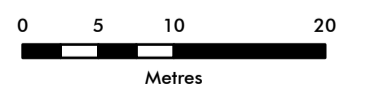
Tree DBH Legend

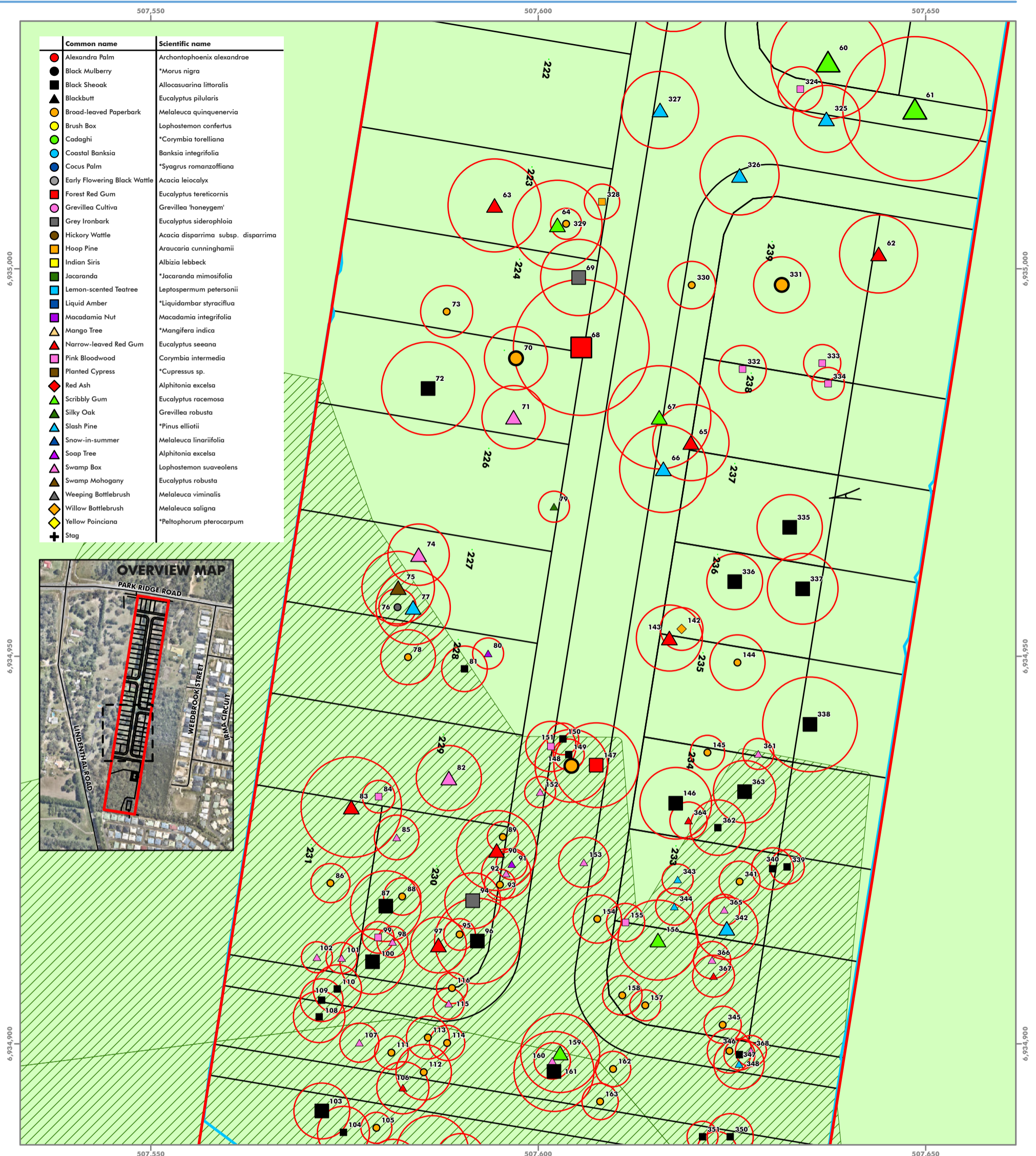
Symbol	DBH (mm)
Small circle, square, diamond	100 - 290
Medium circle, square, diamond	300 - 590
Large circle, square, diamond	600+

Figure 5b : Tree Retention Plan

391-397 Park Ridge Road

Map Number: 22009_TRP_05B_D
 Date: 05 October 2023
 Map Projection: GDA2020 MGA Zone 56
 Data: Roads, DCDB - (c)DNRM 2022





Common name	Scientific name
Alexandra Palm	Archontophoenix alexandrae
Black Mulberry	*Morus nigra
Black Sheoak	Allocasuarina littoralis
Blackbutt	Eucalyptus pilularis
Broad-leaved Paperbark	Melaleuca quinquenervia
Brush Box	Lophostemon confertus
Cadaghi	*Corymbia torelliana
Coastal Banksia	Banksia integrifolia
Coccoloba	*Syagrus romanzoffiana
Early Flowering Black Wattle	Acacia leiocalyx
Forest Red Gum	Eucalyptus tereticornis
Grevillea Cultiva	Grevillea 'honeymg'
Grey Ironbark	Eucalyptus siderophloia
Hickory Wattle	Acacia disparrima subsp. disparrima
Hoop Pine	Araucaria cunninghamii
Indian Siris	Albizia lebbek
Jacaranda	*Jacaranda mimosifolia
Lemon-scented Teatree	Leptospermum petersonii
Liquid Amber	*Liquidambar styraciflua
Macadamia Nut	Macadamia integrifolia
Mango Tree	*Mangifera indica
Narrow-leaved Red Gum	Eucalyptus seeana
Pink Bloodwood	Corymbia intermedia
Planted Cypress	*Cupressus sp.
Red Ash	Alphitonia excelsa
Scribbly Gum	Eucalyptus racemosa
Silky Oak	Grevillea robusta
Slash Pine	*Pinus elliotii
Snow-in-summer	Melaleuca linariifolia
Soap Tree	Alphitonia excelsa
Swamp Box	Lophostemon suaveolens
Swamp Mahogany	Eucalyptus robusta
Weeping Bottlebrush	Melaleuca viminalis
Willow Bottlebrush	Melaleuca saligna
Yellow Poinciana	*Peltophorum pterocarpum
Stag	



- Legend**
- Study Area
 - Extent of Earthworks
 - Proposed development
 - Core koala habitat area
- Retention**
- Tree to be removed
- OM-02.01 Vegetation management areas**
- Secondary vegetation management area

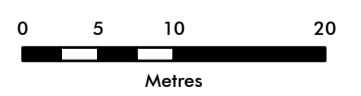
Tree DBH Legend

Symbol	DBH (mm)
	100 - 290
	300 - 590
	600+

Figure 5c : Tree Retention Plan

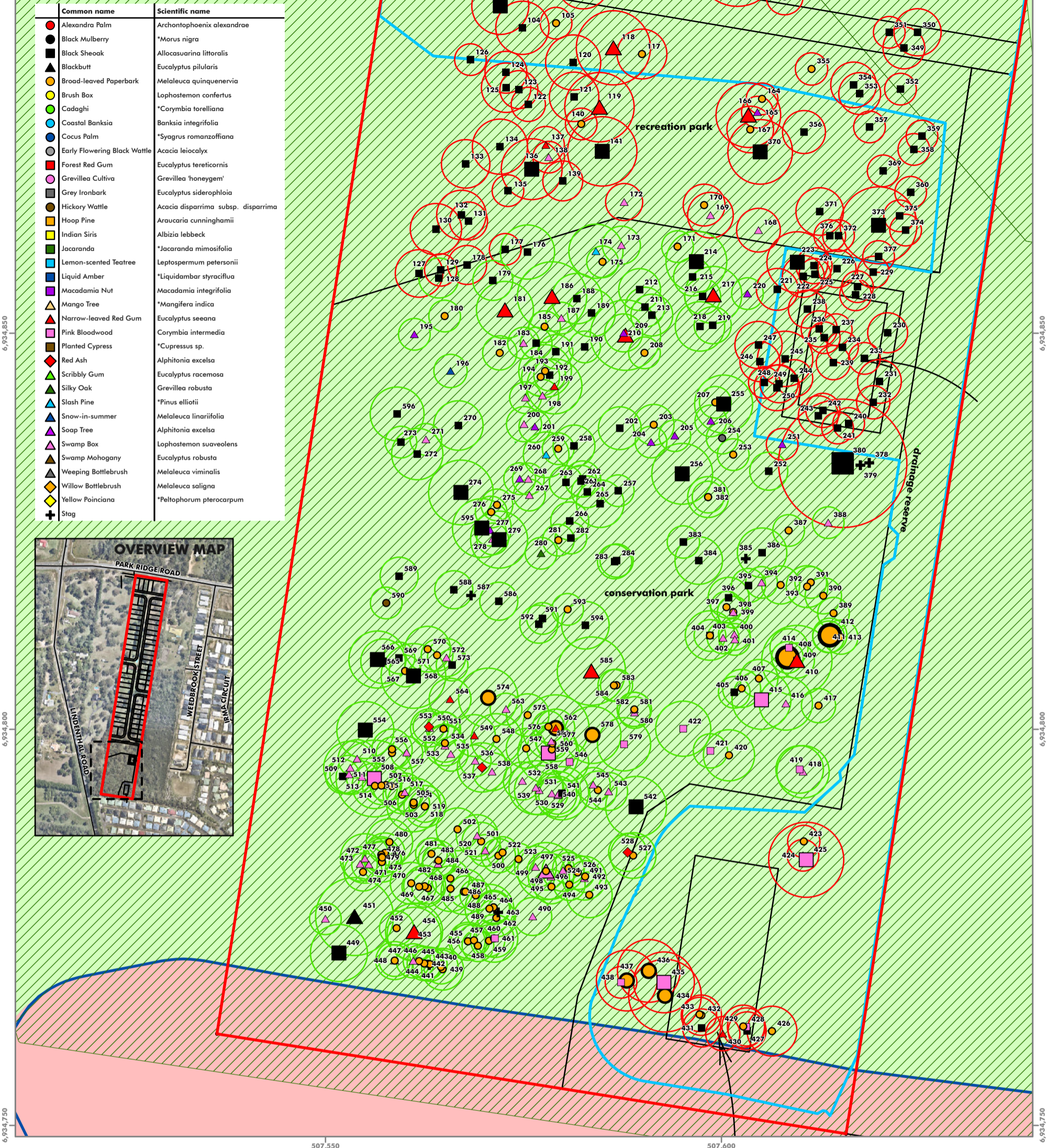
391-397 Park Ridge Road

Map Number: 22009_TRP_05C_E
 Date: 05 October 2023
 Map Projection: GDA2020 MGA Zone 56
 Data: Roads, - (c)DNRM 2022



507,550

507,600



6,934,850

6,934,850

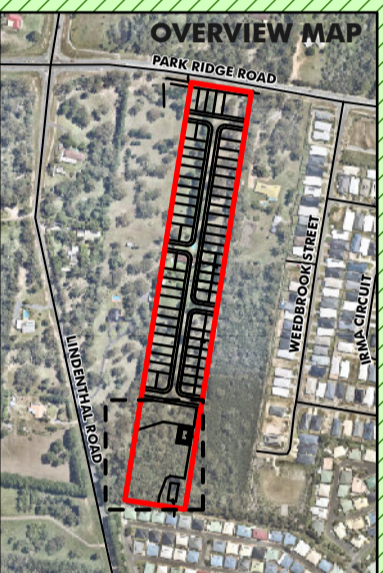
6,934,800

6,934,800

6,934,750

6,934,750

Common name	Scientific name
Alexandra Palm	Archontophoenix alexandrae
Black Mulberry	*Morus nigra
Black Sheoak	Allocasuarina littoralis
Blackbutt	Eucalyptus pilularis
Broad-leaved Paperbark	Melaleuca quinquenervia
Brush Box	Lophostemon confertus
Cadaghi	*Corymbia torelliana
Coastal Banksia	Banksia integrifolia
Cocus Palm	*Syagrus romanzoffiana
Early Flowering Black Wattle	Acacia leiocalyx
Forest Red Gum	Eucalyptus tereticornis
Grevillea Cultiva	Grevillea 'honeym'.
Grey Ironbark	Eucalyptus siderophloia
Hickory Wattle	Acacia disparima subsp. disparima
Hoop Pine	Araucaria cunninghamii
Indian Siris	Albizia lebbek
Jacaranda	*Jacaranda mimosifolia
Lemon-scented Teatree	Leptospermum petersonii
Liquid Amber	*Liquidambar styraciflua
Macadamia Nut	Macadamia integrifolia
Mango Tree	*Mangifera indica
Narrow-leaved Red Gum	Eucalyptus seeana
Pink Bloodwood	Corymbia intermedia
Planted Cypress	*Cupressus sp.
Red Ash	Alphitonia excelsa
Scribbly Gum	Eucalyptus racemosa
Silky Oak	Grevillea robusta
Slash Pine	*Pinus elliotii
Snow-in-summer	Melaleuca linariifolia
Soap Tree	Alphitonia excelsa
Swamp Box	Lophostemon suaveolens
Swamp Mahogany	Eucalyptus robusta
Weeping Bottlebrush	Melaleuca viminalis
Willow Bottlebrush	Melaleuca saligna
Yellow Poinciana	*Peltophorum pterocarpum
Stag	



- Legend**
- Study Area
 - Proposed development
 - Extent of Earthworks
 - Core koala habitat area
- Retention**
- Tree to be removed
 - Tree to e retained
- OM-02.01 Vegetation management areas**
- Primary vegetation management area
 - Secondary vegetation management area
- OM-14.01 Waterways**
- Minor waterway

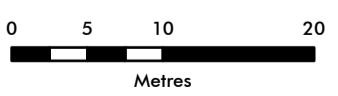
Tree DBH Legend

Symbol	DBH (mm)
Small circle, square, diamond	100 - 290
Medium circle, square, diamond	300 - 590
Large circle, square, diamond	600+

Figure 5d : Tree Retention Plan

391-397 Park Ridge Road

Map Number: 22009_TRP_05D_H
Date: 05 October 2023
Map Projection:
Data: Roads, - (c)DNRM 2022



Note: Tree data for the southern portion of the site was collected with a handheld GPS. Accuracy +/- 5m

Appendix A

Details of Trees Mapped on the Site

Table A1: Detail of Trees mapped on the site

(Source: Trees 1-377 Saunders Havill Group, trees 378-596 EcoSM GPS survey)

Tree No.	Common Name	Scientific Name	DBH (mm)	Height (m)	Spread (m)	Comments	Outcome
1	Cocos Palm	<i>*Syagrus romanzoffiana</i>	245	11	4		Remove
2	Lemon-scented Teatree	<i>Leptospermum petersonii</i>	133	5	4		Remove
3	Narrow-leaved Red Gum	<i>Eucalyptus seeana</i>	590	16	14		Remove
4	Yellow Poinciana	<i>*Peltophorum pterocarpum</i>	155	6	5		Remove
5	Cadaghi	<i>*Corymbia torelliana</i>	545	16	9		Remove
6	Brush Box	<i>Lophostemon confertus</i>	440	17	8		Remove
7	Lemon-scented Teatree	<i>Leptospermum petersonii</i>	201	7	5		Remove
8	Broad-leaved Paperbark	<i>Melaleuca quinquenervia</i>	466	15	7		Remove
9	Willow Bottlebrush	<i>Melaleuca saligna</i>	267	6	5		Remove
10	Broad-leaved Paperbark	<i>Melaleuca quinquenervia</i>	280	11	4		Remove
11	Cocos Palm	<i>*Syagrus romanzoffiana</i>	135	4	2		Remove
12	Narrow-leaved Red Gum	<i>Eucalyptus seeana</i>	610	16	11		Remove
13	Narrow-leaved Red Gum	<i>Eucalyptus seeana</i>	470	16	9		Remove
14	Broad-leaved Paperbark	<i>Melaleuca quinquenervia</i>	355	11	7		Remove
15	Narrow-leaved Red Gum	<i>Eucalyptus seeana</i>	360	16	8		Remove
16	Scribbly Gum	<i>Eucalyptus racemosa</i>	530	17	11		Remove
17	Narrow-leaved Red Gum	<i>Eucalyptus seeana</i>	335	16	7		Remove
18	Broad-leaved Paperbark	<i>Melaleuca quinquenervia</i>	265	12	5		Remove
19	Broad-leaved Paperbark	<i>Melaleuca quinquenervia</i>	283	12	5		Remove
20	Scribbly Gum	<i>Eucalyptus racemosa</i>	670	19	12		Remove
21	Narrow-leaved Red Gum	<i>Eucalyptus seeana</i>	410	18	9		Remove
22	Scribbly Gum	<i>Eucalyptus racemosa</i>	925	19	13	LCC habitat tree	Remove
23	Scribbly Gum	<i>Eucalyptus racemosa</i>	740	19	13	LCC habitat tree	Remove
24	Scribbly Gum	<i>Eucalyptus racemosa</i>	580	19	11		Remove
25	Scribbly Gum	<i>Eucalyptus racemosa</i>	695	20	11		Remove
26	Scribbly Gum	<i>Eucalyptus racemosa</i>	505	19	8		Remove
27	Scribbly Gum	<i>Eucalyptus racemosa</i>	520	19	8		Remove
28	Scribbly Gum	<i>Eucalyptus racemosa</i>	615	19	10		Remove
29	Weeping Bottlebrush	<i>Melaleuca viminalis</i>	120	4	3		Remove
30	Cadaghi	<i>*Corymbia torelliana</i>	620	17	11		Remove
31	Liquid Amber	<i>*Liquidambar styraciflua</i>	170	8	4		Remove

Tree No.	Common Name	Scientific Name	DBH (mm)	Height (m)	Spread (m)	Comments	Outcome
32	Slash Pine	* <i>Pinus elliotii</i>	540	20	9		Remove
33	Jacaranda	* <i>Jacaranda mimosifolia</i>	190	7	5		Remove
34	Narrow-leaved Red Gum	<i>Eucalyptus seeana</i>	585	18	9		Remove
35	Pink Bloodwood	<i>Corymbia intermedia</i>	380	19	7		Remove
36	Scribbly Gum	<i>Eucalyptus racemosa</i>	755	22	10	LCC habitat tree	Remove
37	Coastal Banksia	<i>Banksia integrifolia</i>	420	10	3		Remove
38	Slash Pine	* <i>Pinus elliotii</i>	460	21	9		Remove
39	Narrow-leaved Red Gum	<i>Eucalyptus seeana</i>	510	17	8		Remove
40	Lemon-scented Teatree	<i>Leptospermum petersonii</i>	204	5	5		Remove
41	Planted Cypress	* <i>Cupressus sp.</i>	320	11	5		Remove
42	Scribbly Gum	<i>Eucalyptus racemosa</i>	670	21	11		Remove
43	Scribbly Gum	<i>Eucalyptus racemosa</i>	310	16	6	Die-back	Remove
44	Scribbly Gum	<i>Eucalyptus racemosa</i>	520	19	9		Remove
45	Coastal Banksia	<i>Banksia integrifolia</i>	160	8	3		Remove
46	Cocos Palm	* <i>Syagrus romanzoffiana</i>	265	11	4		Remove
47	Weeping Bottlebrush	<i>Melaleuca viminalis</i>	228	5	6		Remove
48	Broad-leaved Paperbark	<i>Melaleuca quinquenervia</i>	360	14	7		Remove
49	Indian Siris	<i>Albizia lebbek</i>	294	12	7		Remove
50	Cocos Palm	* <i>Syagrus romanzoffiana</i>	210	8	3		Remove
51	Macadamia Nut	<i>Macadamia integrifolia</i>	309	11	6		Remove
52	MangoTree	* <i>Mangifera indica</i>	140	3	3		Remove
53	Willow Bottlebrush	<i>Melaleuca saligna</i>	210	7	3		Remove
54	Weeping Bottlebrush	<i>Melaleuca viminalis</i>	224	5	6		Remove
55	Alexandra Palm	<i>Archontophoenix alexandrae</i>	155	5	2		Remove
56	Alexandra Palm	<i>Archontophoenix alexandrae</i>	165	9	3		Remove
57	Macadamia Nut	<i>Macadamia integrifolia</i>	380	11	6		Remove
58	Alexandra Palm	<i>Archontophoenix alexandrae</i>	170	8	3		Remove
59	Cocos Palm	* <i>Syagrus romanzoffiana</i>	210	8	3		Remove
60	Scribbly Gum	<i>Eucalyptus racemosa</i>	615	20	9		Remove
61	Scribbly Gum	<i>Eucalyptus racemosa</i>	775	20	11	LCC habitat tree	Remove
62	Narrow-leaved Red Gum	<i>Eucalyptus seeana</i>	420	17	9		Remove
63	Narrow-leaved Red Gum	<i>Eucalyptus seeana</i>	500	17	9		Remove
64	Scribbly Gum	<i>Eucalyptus racemosa</i>	480	19	9		Remove
65	Narrow-leaved Red Gum	<i>Eucalyptus seeana</i>	410	18	11		Remove
66	Slash Pine	* <i>Pinus elliotii</i>	470	19	10		Remove

Tree No.	Common Name	Scientific Name	DBH (mm)	Height (m)	Spread (m)	Comments	Outcome
67	Scribbly Gum	<i>Eucalyptus racemosa</i>	555	18	9		Remove
68	Forest Red Gum	<i>Eucalyptus tereticornis</i>	730	23	11	LCC habitat tree	Remove
69	Grey Ironbark	<i>Eucalyptus siderophloia</i>	410	18	8		Remove
70	Broad-leaved Paperbark	<i>Melaleuca quinquenervia</i>	340	12	5		Remove
71	Swamp Box	<i>Lophostemon suaveolens</i>	340	11	6		Remove
72	Black Sheoak	<i>Allocasuarina littoralis</i>	500	11	7		Remove
73	Broad-leaved Paperbark	<i>Melaleuca quinquenervia</i>	280	11	5		Remove
74	Swamp Box	<i>Lophostemon suaveolens</i>	330	17	8		Remove
75	Swamp Mahogany	<i>Eucalyptus robusta</i>	390	19	8		Remove
76	Early Flowering Black Wattle	<i>Acacia leiocalyx</i>	200	9	4	Die-back	Remove
77	Slash Pine	* <i>Pinus elliotii</i>	400	21	9		Remove
78	Broad-leaved Paperbark	<i>Melaleuca quinquenervia</i>	295	11	5		Remove
79	Silky Oak	<i>Grevillea robusta</i>	160	10	4		Remove
80	Soap Tree	<i>Alphitonia excelsa</i>	110	7	3		Remove
81	Black Sheoak	<i>Allocasuarina littoralis</i>	245	13	5		Remove
82	Swamp Box	<i>Lophostemon suaveolens</i>	350	17	9		Remove
83	Narrow-leaved Red Gum	<i>Eucalyptus seeana</i>	540	18	10		Remove
84	Pink Bloodwood	<i>Corymbia intermedia</i>	175	10	4	Termite nest	Remove
85	Swamp Box	<i>Lophostemon suaveolens</i>	240	12	6		Remove
86	Broad-leaved Paperbark	<i>Melaleuca quinquenervia</i>	210	12	5		Remove
87	Black Sheoak	<i>Allocasuarina littoralis</i>	380	12	7	Die-back	Remove
88	Broad-leaved Paperbark	<i>Melaleuca quinquenervia</i>	200	12	5		Remove
89	Broad-leaved Paperbark	<i>Melaleuca quinquenervia</i>	120	7	3		Remove
90	Narrow-leaved Red Gum	<i>Eucalyptus seeana</i>	430	19	9		Remove
91	Soap Tree	<i>Alphitonia excelsa</i>	105	7	4		Remove
92	Swamp Box	<i>Lophostemon suaveolens</i>	265	12	6		Remove
93	Broad-leaved Paperbark	<i>Melaleuca quinquenervia</i>	160	8	3		Remove
94	Grey Ironbark	<i>Eucalyptus siderophloia</i>	300	16	7		Remove
95	Broad-leaved Paperbark	<i>Melaleuca quinquenervia</i>	170	13	2		Remove
96	Black Sheoak	<i>Allocasuarina littoralis</i>	460	12	5	Trunk damage	Remove
97	Narrow-leaved Red Gum	<i>Eucalyptus seeana</i>	300	17	9		Remove
98	Swamp Box	<i>Lophostemon suaveolens</i>	160	12	5		Remove
99	Pink Bloodwood	<i>Corymbia intermedia</i>	170	15	5		Remove
100	Black Sheoak	<i>Allocasuarina littoralis</i>	350	12	5	Trunk damage and die-back	Remove

Tree No.	Common Name	Scientific Name	DBH (mm)	Height (m)	Spread (m)	Comments	Outcome
101	Swamp Box	<i>Lophostemon suaveolens</i>	165	10	4		Remove
102	Swamp Box	<i>Lophostemon suaveolens</i>	125	10	3	Termite nest	Remove
103	Black Sheoak	<i>Allocasuarina littoralis</i>	300	12	5	Trunk damage and die-back	Remove
104	Black Sheoak	<i>Allocasuarina littoralis</i>	280	13	7	Die-back	Remove
105	Broad-leaved Paperbark	<i>Melaleuca quinquenervia</i>	155	13	3		Remove
106	Narrow-leaved Red Gum	<i>Eucalyptus seeana</i>	280	18	6		Remove
107	Swamp Box	<i>Lophostemon suaveolens</i>	210	11	5		Remove
108	Black Sheoak	<i>Allocasuarina littoralis</i>	277	10	6		Remove
109	Black Sheoak	<i>Allocasuarina littoralis</i>	230	11	5	Die-back	Remove
110	Black Sheoak	<i>Allocasuarina littoralis</i>	260	12	2		Remove
111	Broad-leaved Paperbark	<i>Melaleuca quinquenervia</i>	180	11	5		Remove
112	Broad-leaved Paperbark	<i>Melaleuca quinquenervia</i>	298	12	6		Remove
113	Broad-leaved Paperbark	<i>Melaleuca quinquenervia</i>	230	12	5		Remove
114	Broad-leaved Paperbark	<i>Melaleuca quinquenervia</i>	190	11	5		Remove
115	Swamp Box	<i>Lophostemon suaveolens</i>	155	10	5		Remove
116	Broad-leaved Paperbark	<i>Melaleuca quinquenervia</i>	150	9	4		Remove
117	Broad-leaved Paperbark	<i>Melaleuca quinquenervia</i>	262	11	5		Remove
118	Narrow-leaved Red Gum	<i>Eucalyptus seeana</i>	390	18	9		Remove
119	Narrow-leaved Red Gum	<i>Eucalyptus seeana</i>	365	18	7		Remove
120	Black Sheoak	<i>Allocasuarina littoralis</i>	290	11	7		Remove
121	Black Sheoak	<i>Allocasuarina littoralis</i>	260	11	6	Trunk damage	Remove
122	Black Sheoak	<i>Allocasuarina littoralis</i>	180	8	3		Remove
123	Black Sheoak	<i>Allocasuarina littoralis</i>	200	10	6	Die-back	Remove
124	Black Sheoak	<i>Allocasuarina littoralis</i>	220	11	5		Remove
125	Black Sheoak	<i>Allocasuarina littoralis</i>	260	12	5		Remove
126	Black Sheoak	<i>Allocasuarina littoralis</i>	165	7	4	Die-back	Remove
127	Black Sheoak	<i>Allocasuarina littoralis</i>	250	11	5		Remove
128	Black Sheoak	<i>Allocasuarina littoralis</i>	210	10	6	Die-back	Retain
129	Black Sheoak	<i>Allocasuarina littoralis</i>	170	11	5		Remove
130	Black Sheoak	<i>Allocasuarina littoralis</i>	270	12	5		Remove
131	Black Sheoak	<i>Allocasuarina littoralis</i>	200	11	4	Die-back	Remove
132	Black Sheoak	<i>Allocasuarina littoralis</i>	260	12	5		Remove
133	Black Sheoak	<i>Allocasuarina littoralis</i>	255	12	5		Remove
134	Black Sheoak	<i>Allocasuarina littoralis</i>	290	11	5		Remove
135	Black Sheoak	<i>Allocasuarina littoralis</i>	165	9	2		Remove

Tree No.	Common Name	Scientific Name	DBH (mm)	Height (m)	Spread (m)	Comments	Outcome
136	Black Sheoak	<i>Allocasuarina littoralis</i>	320	12	6		Remove
137	Narrow-leaved Red Gum	<i>Eucalyptus seeana</i>	195	12	3		Remove
138	Swamp Box	<i>Lophostemon suaveolens</i>	130	9	3		Remove
139	Black Sheoak	<i>Allocasuarina littoralis</i>	210	11	5		Remove
140	Broad-leaved Paperbark	<i>Melaleuca quinquenervia</i>	130	11	4		Remove
141	Black Sheoak	<i>Allocasuarina littoralis</i>	365	11	7		Remove
142	Willow Bottlebrush	<i>Melaleuca saligna</i>	230	11	5		Remove
143	Narrow-leaved Red Gum	<i>Eucalyptus seeana</i>	355	16	8		Remove
144	Broad-leaved Paperbark	<i>Melaleuca quinquenervia</i>	297	11	5		Remove
145	Broad-leaved Paperbark	<i>Melaleuca quinquenervia</i>	185	11	5		Remove
146	Black Sheoak	<i>Allocasuarina littoralis</i>	385	9	6		Remove
147	Forest Red Gum	<i>Eucalyptus tereticornis</i>	455	21	7		Remove
148	Broad-leaved Paperbark	<i>Melaleuca quinquenervia</i>	391	12	7		Remove
149	Black Sheoak	<i>Allocasuarina littoralis</i>	135	9	4		Remove
150	Black Sheoak	<i>Allocasuarina littoralis</i>	170	11	5		Remove
151	Pink Bloodwood	<i>Corymbia intermedia</i>	270	13	6		Remove
152	Swamp Box	<i>Lophostemon suaveolens</i>	140	9	4		Remove
153	Swamp Box	<i>Lophostemon suaveolens</i>	270	11	6		Remove
154	Broad-leaved Paperbark	<i>Melaleuca quinquenervia</i>	260	11	6		Remove
155	Pink Bloodwood	<i>Corymbia intermedia</i>	205	13	7		Remove
156	Scribbly Gum	<i>Eucalyptus racemosa</i>	430	18	11	Trunk damage and die-back	Remove
157	Broad-leaved Paperbark	<i>Melaleuca quinquenervia</i>	165	10	4		Remove
158	Broad-leaved Paperbark	<i>Melaleuca quinquenervia</i>	212	10	3		Remove
159	Scribbly Gum	<i>Eucalyptus racemosa</i>	425	16	9		Remove
160	Swamp Box	<i>Lophostemon suaveolens</i>	195	11	5		Remove
161	Black Sheoak	<i>Allocasuarina littoralis</i>	430	10	7		Remove
162	Broad-leaved Paperbark	<i>Melaleuca quinquenervia</i>	190	11	5		Remove
163	Broad-leaved Paperbark	<i>Melaleuca quinquenervia</i>	195	9	5		Remove
164	Broad-leaved Paperbark	<i>Melaleuca quinquenervia</i>	165	9	5		Remove
165	Soap Tree	<i>Alphitonia excelsa</i>	140	9	5		Remove
166	Narrow-leaved Red Gum	<i>Eucalyptus seeana</i>	340	16	6		Remove
167	Broad-leaved Paperbark	<i>Melaleuca quinquenervia</i>	245	11	5		Remove
168	Swamp Box	<i>Lophostemon suaveolens</i>	230	10	4		Remove
169	Swamp Box	<i>Lophostemon suaveolens</i>	240	11	5		Remove
170	Broad-leaved Paperbark	<i>Melaleuca quinquenervia</i>	220	11	5		Remove

Tree No.	Common Name	Scientific Name	DBH (mm)	Height (m)	Spread (m)	Comments	Outcome
171	Broad-leaved Paperbark	<i>Melaleuca quinquenervia</i>	165	11	3		Retain
172	Swamp Box	<i>Lophostemon suaveolens</i>	195	11	5		Remove
173	Swamp Box	<i>Lophostemon suaveolens</i>	200	11	5		Retain
174	Slash Pine	* <i>Pinus elliotii</i>	285	17	6		Retain
175	Broad-leaved Paperbark	<i>Melaleuca quinquenervia</i>	130	9	2		Retain
176	Black Sheoak	<i>Allocasuarina littoralis</i>	285	9	7		Retain
177	Black Sheoak	<i>Allocasuarina littoralis</i>	150	11	1		Remove
178	Black Sheoak	<i>Allocasuarina littoralis</i>	205	10	3		Remove
179	Black Sheoak	<i>Allocasuarina littoralis</i>	210	10	4	Die-back, termite nest	Retain
180	Broad-leaved Paperbark	<i>Melaleuca quinquenervia</i>	135	11	4		Retain
181	Narrow-leaved Red Gum	<i>Eucalyptus seeana</i>	300	17	9		Retain
182	Broad-leaved Paperbark	<i>Melaleuca quinquenervia</i>	180	12	5		Retain
183	Swamp Box	<i>Lophostemon suaveolens</i>	125	9	3		Retain
184	Black Sheoak	<i>Allocasuarina littoralis</i>	100	7	3		Retain
185	Broad-leaved Paperbark	<i>Melaleuca quinquenervia</i>	120	11	2		Retain
186	Narrow-leaved Red Gum	<i>Eucalyptus seeana</i>	365	18	8		Retain
187	Swamp Box	<i>Lophostemon suaveolens</i>	130	10	3		Retain
188	Black Sheoak	<i>Allocasuarina littoralis</i>	265	11	5		Retain
189	Black Sheoak	<i>Allocasuarina littoralis</i>	251	11	6		Retain
190	Black Sheoak	<i>Allocasuarina littoralis</i>	130	7	3		Retain
191	Black Sheoak	<i>Allocasuarina littoralis</i>	180	7	5	Die-back	Retain
192	Black Sheoak	<i>Allocasuarina littoralis</i>	165	10	4		Retain
193	Broad-leaved Paperbark	<i>Melaleuca quinquenervia</i>	277	12	5		Retain
194	Broad-leaved Paperbark	<i>Melaleuca quinquenervia</i>	200	11	3		Retain
195	Soap Tree	<i>Alphitonia excelsa</i>	140	8	3		Retain
196	Snow-in-summer	<i>Melaleuca linariifolia</i>	175	7	4		Retain
197	Swamp Box	<i>Lophostemon suaveolens</i>	145	9	3		Retain
198	Swamp Box	<i>Lophostemon suaveolens</i>	170	10	5		Retain
199	Narrow-leaved Red Gum	<i>Eucalyptus seeana</i>	290	17	8		Retain
200	Swamp Box	<i>Lophostemon suaveolens</i>	185	11	5		Retain
201	Soap Tree	<i>Lophostemon suaveolens</i>	100	6	2		Retain
202	Black Sheoak	<i>Allocasuarina littoralis</i>	225	10	3		Retain
203	Broad-leaved Paperbark	<i>Melaleuca quinquenervia</i>	214	11	5		Retain
204	Soap Tree	<i>Lophostemon suaveolens</i>	100	8	3		Retain
205	Soap Tree	<i>Alphitonia excelsa</i>	100	8	3		Retain

Tree No.	Common Name	Scientific Name	DBH (mm)	Height (m)	Spread (m)	Comments	Outcome
206	Soap Tree	<i>Alphitonia excelsa</i>	100	9	3		Retain
207	Broad-leaved Paperbark	<i>Melaleuca quinquenervia</i>	100	9	2		Retain
208	Broad-leaved Paperbark	<i>Melaleuca quinquenervia</i>	160	11	4		Retain
209	Narrow-leaved Red Gum	<i>Eucalyptus seeana</i>	370	16	9		Retain
210	Soap Tree	<i>Alphitonia excelsa</i>	200	14	6		Retain
211	Black Sheoak	<i>Allocasuarina littoralis</i>	209	11	5		Retain
212	Black Sheoak	<i>Allocasuarina littoralis</i>	220	11	6		Retain
213	Black Sheoak	<i>Allocasuarina littoralis</i>	220	11	5		Retain
214	Black Sheoak	<i>Allocasuarina littoralis</i>	320	16	7		Retain
215	Black Sheoak	<i>Allocasuarina littoralis</i>	200	10	6		Retain
216	Black Sheoak	<i>Allocasuarina littoralis</i>	190	11	5		Retain
217	Narrow-leaved Red Gum	<i>Eucalyptus seeana</i>	300	17	9		Retain
218	Black Sheoak	<i>Allocasuarina littoralis</i>	260	12	5		Retain
219	Black Sheoak	<i>Allocasuarina littoralis</i>	195	9	2		Retain
220	Soap Tree	<i>Alphitonia excelsa</i>	120	9	3		Retain
221	Black Sheoak	<i>Allocasuarina littoralis</i>	220	11	6		Remove
222	Black Sheoak	<i>Allocasuarina littoralis</i>	220	10	6		Remove
223	Black Sheoak	<i>Allocasuarina littoralis</i>	320	12	6		Remove
224	Black Sheoak	<i>Allocasuarina littoralis</i>	190	9	5		Remove
225	Black Sheoak	<i>Allocasuarina littoralis</i>	140	11	5		Remove
226	Black Sheoak	<i>Allocasuarina littoralis</i>	200	12	6		Remove
227	Black Sheoak	<i>Allocasuarina littoralis</i>	125	11	5		Remove
228	Black Sheoak	<i>Allocasuarina littoralis</i>	155	10	5		Remove
229	Black Sheoak	<i>Allocasuarina littoralis</i>	135	11	4		Remove
230	Black Sheoak	<i>Allocasuarina littoralis</i>	210	11	5		Remove
231	Black Sheoak	<i>Allocasuarina littoralis</i>	230	12	6		Remove
232	Black Sheoak	<i>Allocasuarina littoralis</i>	175	11	5		Remove
233	Black Sheoak	<i>Allocasuarina littoralis</i>	148	11	3		Remove
234	Black Sheoak	<i>Allocasuarina littoralis</i>	135	9	3		Remove
235	Black Sheoak	<i>Allocasuarina littoralis</i>	155	11	5		Remove
236	Black Sheoak	<i>Allocasuarina littoralis</i>	190	11	5		Remove
237	Black Sheoak	<i>Allocasuarina littoralis</i>	125	9	4		Remove
238	Black Sheoak	<i>Allocasuarina littoralis</i>	200	11	4	Trunk damage	Remove
239	Black Sheoak	<i>Allocasuarina littoralis</i>	180	11	5		Remove
240	Black Sheoak	<i>Allocasuarina littoralis</i>	145	11	5		Remove

Tree No.	Common Name	Scientific Name	DBH (mm)	Height (m)	Spread (m)	Comments	Outcome
241	Black Sheoak	<i>Allocasuarina littoralis</i>	135	10	1		Remove
242	Black Sheoak	<i>Allocasuarina littoralis</i>	180	11	3		Remove
243	Black Sheoak	<i>Allocasuarina littoralis</i>	210	11	5		Remove
244	Black Sheoak	<i>Allocasuarina littoralis</i>	195	11	5		Remove
245	Black Sheoak	<i>Allocasuarina littoralis</i>	291	12	7	Die-back	Remove
246	Black Sheoak	<i>Allocasuarina littoralis</i>	210	12	5		Remove
247	Black Sheoak	<i>Allocasuarina littoralis</i>	248	10	5		Remove
248	Black Sheoak	<i>Allocasuarina littoralis</i>	155	11	3		Remove
249	Black Sheoak	<i>Allocasuarina littoralis</i>	200	11	4		Remove
250	Black Sheoak	<i>Allocasuarina littoralis</i>	240	12	5		Remove
251	Soap Tree	<i>Alphitonia excelsa</i>	165	10	4		Remove
252	Black Sheoak	<i>Allocasuarina littoralis</i>	200	11	5		Retain
253	Broad-leaved Paperbark	<i>Melaleuca quinquenervia</i>	140	9	2		Retain
254	Early Flowering Black Wattle	<i>Acacia leiocalyx</i>	130	9	4		Retain
255	Black Sheoak	<i>Allocasuarina littoralis</i>	305	12	6		Retain
256	Black Sheoak	<i>Allocasuarina littoralis</i>	320	12	5	Trunk damage	Retain
257	Black Sheoak	<i>Allocasuarina littoralis</i>	166	9	4		Retain
258	Black Sheoak	<i>Allocasuarina littoralis</i>	220	9	5		Retain
259	Broad-leaved Paperbark	<i>Melaleuca quinquenervia</i>	100	9	2		Retain
260	Slash Pine	* <i>Pinus elliotii</i>	240	17	6		Retain
261	Black Sheoak	<i>Allocasuarina littoralis</i>	135	9	2		Retain
262	Black Sheoak	<i>Allocasuarina littoralis</i>	190	11	4		Retain
263	Black Sheoak	<i>Allocasuarina littoralis</i>	175	11	4		Retain
264	Black Sheoak	<i>Allocasuarina littoralis</i>	140	11	3		Retain
265	Black Sheoak	<i>Allocasuarina littoralis</i>	250	12	5		Retain
266	Black Sheoak	<i>Allocasuarina littoralis</i>	200	11	5		Retain
267	Swamp Box	<i>Lophostemon suaveolens</i>	160	10	3		Retain
268	Swamp Box	<i>Lophostemon suaveolens</i>	160	11	3		Retain
269	Soap Tree	<i>Alphitonia excelsa</i>	140	9	4		Retain
270	Black Sheoak	<i>Allocasuarina littoralis</i>	260	11	6		Retain
271	Swamp Box	<i>Lophostemon suaveolens</i>	155	9	4		Retain
272	Black Sheoak	<i>Allocasuarina littoralis</i>	270	12	6		Retain
273	Black Sheoak	<i>Allocasuarina littoralis</i>	150	11	2		Retain
274	Black Sheoak	<i>Allocasuarina littoralis</i>	340	12	6		Retain

Tree No.	Common Name	Scientific Name	DBH (mm)	Height (m)	Spread (m)	Comments	Outcome
275	Broad-leaved Paperbark	<i>Melaleuca quinquenervia</i>	150	11	3		Retain
276	Broad-leaved Paperbark	<i>Melaleuca quinquenervia</i>	100	7	1		Retain
277	Soap Tree	<i>Alphitonia excelsa</i>	120	9	3		Retain
278	Swamp Box	<i>Lophostemon suaveolens</i>	165	11	3		Retain
279	Black Sheoak	<i>Allocasuarina littoralis</i>	300	12	4	Trunk damage	Retain
280	Silky Oak	<i>Grevillea robusta</i>	100	9	3		Retain
281	Broad-leaved Paperbark	<i>Melaleuca quinquenervia</i>	130	10	2		Retain
282	Black Sheoak	<i>Allocasuarina littoralis</i>	165	10	5		Retain
283	Black Sheoak	<i>Allocasuarina littoralis</i>	180	12	6	Die-back	Retain
284	Black Sheoak	<i>Allocasuarina littoralis</i>	175	9	5		Retain
285	Grevillea Cultiva	<i>Grevillea 'honeygem'</i>	155	5	6		Remove
286	Slash Pine	* <i>Pinus elliotii</i>	167	22	9		Remove
287	Slash Pine	* <i>Pinus elliotii</i>	129	22	8		Remove
288	Slash Pine	* <i>Pinus elliotii</i>	116	22	8		Remove
289	Slash Pine	* <i>Pinus elliotii</i>	148	21	8		Remove
290	Slash Pine	* <i>Pinus elliotii</i>	135	22	8		Remove
291	Slash Pine	* <i>Pinus elliotii</i>	126	21	8		Remove
292	Slash Pine	* <i>Pinus elliotii</i>	126	21	8		Remove
293	Slash Pine	* <i>Pinus elliotii</i>	135	21	9		Remove
294	Slash Pine	* <i>Pinus elliotii</i>	126	22	9		Remove
295	Slash Pine	* <i>Pinus elliotii</i>	105	22	9		Remove
296	Slash Pine	* <i>Pinus elliotii</i>	105	21	8		Remove
297	Slash Pine	* <i>Pinus elliotii</i>	105	21	9		Remove
298	Slash Pine	* <i>Pinus elliotii</i>	110	21	9		Remove
299	Slash Pine	* <i>Pinus elliotii</i>	407	22	13		Remove
300	Slash Pine	* <i>Pinus elliotii</i>	265	23	8		Remove
301	Slash Pine	* <i>Pinus elliotii</i>	113	22	9		Remove
302	Slash Pine	* <i>Pinus elliotii</i>	300	22	9		Remove
303	Slash Pine	* <i>Pinus elliotii</i>	115	21	9		Remove
304	Slash Pine	* <i>Pinus elliotii</i>	115	22	9		Remove
305	Slash Pine	* <i>Pinus elliotii</i>	116	22	9		Remove
306	Slash Pine	* <i>Pinus elliotii</i>	101	22	9		Remove
307	Slash Pine	* <i>Pinus elliotii</i>	123	22	9		Remove
308	Slash Pine	* <i>Pinus elliotii</i>	107	22	8		Remove
309	Slash Pine	* <i>Pinus elliotii</i>	105	22	9		Remove

Tree No.	Common Name	Scientific Name	DBH (mm)	Height (m)	Spread (m)	Comments	Outcome
310	Slash Pine	* <i>Pinus elliotii</i>	116	22	8		Remove
311	Slash Pine	* <i>Pinus elliotii</i>	116	22	9		Remove
312	Black Sheoak	<i>Allocasuarina littoralis</i>	340	9	7		Remove
313	Black Sheoak	<i>Allocasuarina littoralis</i>	403	10	7		Remove
314	Pink Bloodwood	<i>Corymbia intermedia</i>	300	20	8		Remove
315	Black Mulberry	* <i>Morus nigra</i>	256	6	7		Remove
316	Black Mulberry	* <i>Morus nigra</i>	277	5	7		Remove
317	Macadamia Nut	<i>Macadamia integrifolia</i>	180	7	8		Remove
318	Mango Tree	* <i>Mangifera indica</i>	448	7	9		Remove
319	Mango Tree	* <i>Mangifera indica</i>	220	7	9		Remove
320	Mango Tree	* <i>Mangifera indica</i>	265	6	8		Remove
321	Mango Tree	* <i>Mangifera indica</i>	321	5	8		Remove
322	Alexandra Palm	<i>Archontophoenix alexandrae</i>	180	9	6		Remove
323	Broad-leaved Paperbark	<i>Melaleuca quinquenervia</i>	475	14	9		Remove
324	Pink Bloodwood	<i>Corymbia intermedia</i>	240	14	6		Remove
325	Slash Pine	* <i>Pinus elliotii</i>	360	22	9		Remove
326	Slash Pine	* <i>Pinus elliotii</i>	425	21	10		Remove
327	Slash Pine	* <i>Pinus elliotii</i>	415	21	9		Remove
328	Hoop Pine	<i>Araucaria cunninghamii</i>	190	14	8		Remove
329	Broad-leaved Paperbark	<i>Melaleuca quinquenervia</i>	140	8	4		Remove
330	Broad-leaved Paperbark	<i>Melaleuca quinquenervia</i>	255	10	6		Remove
331	Broad-leaved Paperbark	<i>Melaleuca quinquenervia</i>	302	10	6		Remove
332	Pink Bloodwood	<i>Corymbia intermedia</i>	255	17	8		Remove
333	Pink Bloodwood	<i>Corymbia intermedia</i>	200	12	7		Remove
334	Pink Bloodwood	<i>Corymbia intermedia</i>	175	13	4		Remove
335	Black Sheoak	<i>Allocasuarina littoralis</i>	351	9	9		Remove
336	Black Sheoak	<i>Allocasuarina littoralis</i>	300	8	8		Remove
337	Black Sheoak	<i>Allocasuarina littoralis</i>	380	8	9		Remove
338	Black Sheoak	<i>Allocasuarina littoralis</i>	509	8	9		Remove
339	Black Sheoak	<i>Allocasuarina littoralis</i>	185	9	5		Remove
340	Black Sheoak	<i>Allocasuarina littoralis</i>	225	5	6		Remove
341	Broad-leaved Paperbark	<i>Melaleuca quinquenervia</i>	220	14	7		Remove
342	Slash Pine	* <i>Pinus elliotii</i>	335	22	9		Remove
343	Slash Pine	* <i>Pinus elliotii</i>	140	19	7		Remove
344	Slash Pine	* <i>Pinus elliotii</i>	200	22	9		Remove

Tree No.	Common Name	Scientific Name	DBH (mm)	Height (m)	Spread (m)	Comments	Outcome
345	Broad-leaved Paperbark	<i>Melaleuca quinquenervia</i>	200	11	7		Remove
346	Broad-leaved Paperbark	<i>Melaleuca quinquenervia</i>	238	8	4		Remove
347	Black Sheoak	<i>Allocasuarina littoralis</i>	150	7	4		Remove
348	Slash Pine	* <i>Pinus elliotii</i>	270	19	8		Remove
349	Black Sheoak	<i>Allocasuarina littoralis</i>	220	15	6		Remove
350	Black Sheoak	<i>Allocasuarina littoralis</i>	248	8	4		Remove
351	Black Sheoak	<i>Allocasuarina littoralis</i>	133	9	5		Remove
352	Black Sheoak	<i>Allocasuarina littoralis</i>	130	14	5		Remove
353	Black Sheoak	<i>Allocasuarina littoralis</i>	220	15	9		Remove
354	Black Sheoak	<i>Allocasuarina littoralis</i>	240	15	8		Remove
355	Broad-leaved Paperbark	<i>Melaleuca quinquenervia</i>	170	15	6		Remove
356	Black Sheoak	<i>Allocasuarina littoralis</i>	226	14	6		Remove
357	Black Sheoak	<i>Allocasuarina littoralis</i>	155	12	4		Remove
358	Black Sheoak	<i>Allocasuarina littoralis</i>	140	10	4		Remove
359	Black Sheoak	<i>Allocasuarina littoralis</i>	165	14	7		Remove
360	Black Sheoak	<i>Allocasuarina littoralis</i>	139	15	5		Remove
361	Swamp Box	<i>Lophostemon suaveolens</i>	160	13	4		Remove
362	Black Sheoak	<i>Allocasuarina littoralis</i>	298	11	3		Remove
363	Black Sheoak	<i>Allocasuarina littoralis</i>	335	8	6		Remove
364	Narrow-leaved Red Gum	<i>Eucalyptus seeana</i>	200	15	6		Remove
365	Swamp Box	<i>Lophostemon suaveolens</i>	160	11	6		Remove
366	Swamp Box	<i>Lophostemon suaveolens</i>	200	11	6		Remove
367	Narrow-leaved Red Gum	<i>Eucalyptus seeana</i>	225	14	7		Remove
368	Swamp Box	<i>Lophostemon suaveolens</i>	90	8	5		Remove
369	Black Sheoak	<i>Allocasuarina littoralis</i>	150	17	4		Remove
370	Black Sheoak	<i>Allocasuarina littoralis</i>	340	16	7		Remove
371	Black Sheoak	<i>Allocasuarina littoralis</i>	250	18	7		Remove
372	Black Sheoak	<i>Allocasuarina littoralis</i>	100	19	3		Remove
373	Black Sheoak	<i>Allocasuarina littoralis</i>	404	17	7		Remove
374	Black Sheoak	<i>Allocasuarina littoralis</i>	160	21	6		Remove
375	Black Sheoak	<i>Allocasuarina littoralis</i>	160	15	6		Remove
376	Black Sheoak	<i>Allocasuarina littoralis</i>	130	10	5		Remove
377	Black Sheoak	<i>Allocasuarina littoralis</i>	135	15	5		Remove
378	Dead	-	185	5	1		Remove
379	Dead	-	265	5	2		Remove

Tree No.	Common Name	Scientific Name	DBH (mm)	Height (m)	Spread (m)	Comments	Outcome
380	Black Sheoak	<i>Allocasuarina littoralis</i>	675	7	3		Remove
381	Broad-leaved Paperbark	<i>Melaleuca quinquenervia</i>	120	6	2		Retain
382	Broad-leaved Paperbark	<i>Melaleuca quinquenervia</i>	215	8	3		Retain
383	Black Sheoak	<i>Allocasuarina littoralis</i>	170	8	3	Twin-leadered from 1m	Retain
384	Black Sheoak	<i>Allocasuarina littoralis</i>	250	8	4		Retain
385	Dead	-	220	8	3		Retain
386	Black Sheoak	<i>Allocasuarina littoralis</i>	260	8	4		Retain
387	Broad-leaved Paperbark	<i>Melaleuca quinquenervia</i>	140	6	3		Retain
388	Swamp Box	<i>Lophostemon suaveolens</i>	140	6	1		Retain
389	Broad-leaved Paperbark	<i>Melaleuca quinquenervia</i>	130	7	4		Retain
390	Broad-leaved Paperbark	<i>Melaleuca quinquenervia</i>	191	8	4		Retain
391	Broad-leaved Paperbark	<i>Melaleuca quinquenervia</i>	130	8	2		Retain
392	Broad-leaved Paperbark	<i>Melaleuca quinquenervia</i>	220	6	4	Multi-leadered from base	Retain
393	Broad-leaved Paperbark	<i>Melaleuca quinquenervia</i>	200	6	2		Retain
394	Swamp Box	<i>Lophostemon suaveolens</i>	150	6	2		Retain
395	Black Sheoak	<i>Allocasuarina littoralis</i>	180	8	4		Retain
396	Black Sheoak	<i>Allocasuarina littoralis</i>	215	8	3		Retain
397	Broad-leaved Paperbark	<i>Melaleuca quinquenervia</i>	140	8	2		Retain
398	Broad-leaved Paperbark	<i>Melaleuca quinquenervia</i>	160	8	2		Retain
399	Swamp Box	<i>Lophostemon suaveolens</i>	140	8	3		Retain
400	Swamp Box	<i>Lophostemon suaveolens</i>	160	6	2		Retain
401	Swamp Box	<i>Lophostemon suaveolens</i>	160	7	2		Retain
402	Swamp Box	<i>Lophostemon suaveolens</i>	140	6	2		Retain
403	Black Sheoak	<i>Allocasuarina littoralis</i>	260	10	6		Retain
404	Broad-leaved Paperbark	<i>Melaleuca quinquenervia</i>	161	8	4		Retain
405	Black Sheoak	<i>Allocasuarina littoralis</i>	160	8	4		Retain
406	Broad-leaved Paperbark	<i>Melaleuca quinquenervia</i>	200	8	3		Retain
407	Broad-leaved Paperbark	<i>Melaleuca quinquenervia</i>	200	8	4		Retain
408	Broad-leaved Paperbark	<i>Melaleuca quinquenervia</i>	130	6	2		Retain
409	Pink Bloodwood	<i>Corymbia intermedia</i>	185	10	4		Retain
410	Narrow-leaved Red Gum	<i>Eucalyptus seeana</i>	370	10	6		Retain
411	Broad-leaved Paperbark	<i>Melaleuca quinquenervia</i>	140	8	2		Retain
412	Broad-leaved Paperbark	<i>Melaleuca quinquenervia</i>	180	8	2		Retain
413	Broad-leaved Paperbark	<i>Melaleuca quinquenervia</i>	180	10	3		Retain
414	Pink Bloodwood	<i>Corymbia intermedia</i>	200	10	5		Retain

Tree No.	Common Name	Scientific Name	DBH (mm)	Height (m)	Spread (m)	Comments	Outcome
415	Pink Bloodwood	<i>Corymbia intermedia</i>	310	10	5	Termite nest	Retain
416	Swamp Box	<i>Lophostemon suaveolens</i>	280	10	6	Some scratch marks	Retain
417	Broad-leaved Paperbark	<i>Melaleuca quinquenervia</i>	180	8	4		Retain
418	Swamp Box	<i>Lophostemon suaveolens</i>	275	10	4		Retain
419	Pink Bloodwood	<i>Corymbia intermedia</i>	250	12	5		Retain
420	Broad-leaved Paperbark	<i>Melaleuca quinquenervia</i>	269	7	5		Retain
421	Pink Bloodwood	<i>Corymbia intermedia</i>	180	8	3		Retain
422	Pink Bloodwood	<i>Corymbia intermedia</i>	290	10	4		Retain
423	Broad-leaved Paperbark	<i>Melaleuca quinquenervia</i>	170	8	3		Remove
424	Swamp Box	<i>Lophostemon suaveolens</i>	125	6	4		Remove
425	Pink Bloodwood	<i>Corymbia intermedia</i>	395	14	6		Remove
426	Broad-leaved Paperbark	<i>Melaleuca quinquenervia</i>	262	7	4	Multi-leadered from 1m	Remove
427	Black Sheoak	<i>Allocasuarina littoralis</i>	200	5	4	Lean north	Remove
428	Pink Bloodwood	<i>Corymbia intermedia</i>	200	10	5		Remove
429	Broad-leaved Paperbark	<i>Melaleuca quinquenervia</i>	224	6	3	Multi-leadered from 0.5m	Remove
430	Narrow-leaved Red Gum	<i>Eucalyptus seeana</i>	180	8	3	Lean south	Remove
431	Black Sheoak	<i>Allocasuarina littoralis</i>	200	6	5		Remove
432	Broad-leaved Paperbark	<i>Melaleuca quinquenervia</i>	212	8	4	Multi-leadered from base	Remove
433	Broad-leaved Paperbark	<i>Melaleuca quinquenervia</i>	180	7	3		Remove
434	Broad-leaved Paperbark	<i>Melaleuca quinquenervia</i>	382	8	4	Multi-leadered from base	Remove
435	Pink Bloodwood	<i>Corymbia intermedia</i>	320	10	6		Remove
436	Broad-leaved Paperbark	<i>Melaleuca quinquenervia</i>	330	10	6		Remove
437	Broad-leaved Paperbark	<i>Melaleuca quinquenervia</i>	320	10	5	Multi-leadered from 0.5m	Remove
438	Pink Bloodwood	<i>Corymbia intermedia</i>	60	19	6		Remove
439	Broad-leaved Paperbark	<i>Melaleuca quinquenervia</i>	220	9	3		Retain
440	Broad-leaved Paperbark	<i>Melaleuca quinquenervia</i>	180	7	1		Retain
441	Dead	-	206	8	1		Retain
442	Broad-leaved Paperbark	<i>Melaleuca quinquenervia</i>	140	6	3		Retain
443	Broad-leaved Paperbark	<i>Melaleuca quinquenervia</i>	180	8	2		Retain
444	Broad-leaved Paperbark	<i>Melaleuca quinquenervia</i>	180	9	2		Retain
445	Broad-leaved Paperbark	<i>Melaleuca quinquenervia</i>	140	6	1		Retain
446	Swamp Box	<i>Lophostemon suaveolens</i>	180	7	3		Retain
447	Swamp Box	<i>Lophostemon suaveolens</i>	150	7	2		Retain
448	Broad-leaved Paperbark	<i>Melaleuca quinquenervia</i>	200	8	2		Retain
449	Black Sheoak	<i>Allocasuarina littoralis</i>	300	9			Retain

Tree No.	Common Name	Scientific Name	DBH (mm)	Height (m)	Spread (m)	Comments	Outcome
450	Swamp Box	<i>Lophostemon suaveolens</i>	125	6	2		Retain
451	Blackbutt	<i>Eucalyptus pilularis</i>	410	14	8		Retain
452	Broad-leaved Paperbark	<i>Melaleuca quinquenervia</i>	180	7	4		Retain
453	Broad-leaved Paperbark	<i>Melaleuca quinquenervia</i>	283	7	3	Multi-leadered from base	Retain
454	Narrow-leaved Red Gum	<i>Eucalyptus seeana</i>	300	10	6		Retain
455	Broad-leaved Paperbark	<i>Melaleuca quinquenervia</i>	180	9	2		Retain
456	Broad-leaved Paperbark	<i>Melaleuca quinquenervia</i>	200	9	2		Retain
457	Broad-leaved Paperbark	<i>Melaleuca quinquenervia</i>	140	6	1		Retain
458	Broad-leaved Paperbark	<i>Melaleuca quinquenervia</i>	140	6	3		Retain
459	Broad-leaved Paperbark	<i>Melaleuca quinquenervia</i>	160	6	2		Retain
460	Broad-leaved Paperbark	<i>Melaleuca quinquenervia</i>	250	9	4	Multi-leadered from base	Retain
461	Pink Bloodwood	<i>Corymbia intermedia</i>	200	10	4		Retain
462	Broad-leaved Paperbark	<i>Melaleuca quinquenervia</i>	200	9	3		Retain
463	Dead	-	260	6	2		Retain
464	Broad-leaved Paperbark	<i>Melaleuca quinquenervia</i>	150	6	1		Retain
465	Broad-leaved Paperbark	<i>Melaleuca quinquenervia</i>	180	7	3		Retain
466	Broad-leaved Paperbark	<i>Melaleuca quinquenervia</i>	200	7	2		Retain
467	Broad-leaved Paperbark	<i>Melaleuca quinquenervia</i>	140	6	1		Retain
468	Broad-leaved Paperbark	<i>Melaleuca quinquenervia</i>	220	10	3		Retain
469	Broad-leaved Paperbark	<i>Melaleuca quinquenervia</i>	180	8	3		Retain
470	Broad-leaved Paperbark	<i>Melaleuca quinquenervia</i>	220	12	2		Retain
471	Swamp Box	<i>Lophostemon suaveolens</i>	180	7	2		Retain
472	Swamp Box	<i>Lophostemon suaveolens</i>	260	7	5		Retain
473	Swamp Box	<i>Lophostemon suaveolens</i>	180	6	3		Retain
474	Broad-leaved Paperbark	<i>Melaleuca quinquenervia</i>	200	7	2		Retain
475	Broad-leaved Paperbark	<i>Melaleuca quinquenervia</i>	212	7	4	Multi-leadered from 1m	Retain
476	Broad-leaved Paperbark	<i>Melaleuca quinquenervia</i>	210	8	3		Retain
477	Broad-leaved Paperbark	<i>Melaleuca quinquenervia</i>	190	8	2		Retain
478	Broad-leaved Paperbark	<i>Melaleuca quinquenervia</i>	150	6	2		Retain
479	Broad-leaved Paperbark	<i>Melaleuca quinquenervia</i>	200	7	2		Retain
480	Broad-leaved Paperbark	<i>Melaleuca quinquenervia</i>	244	9	6		Retain
481	Broad-leaved Paperbark	<i>Melaleuca quinquenervia</i>	150	8	2		Retain
482	Swamp Box	<i>Lophostemon suaveolens</i>	150	6	2		Retain
483	Swamp Box	<i>Lophostemon suaveolens</i>	200	8	4		Retain
484	Broad-leaved Paperbark	<i>Melaleuca quinquenervia</i>	160	7	2		Retain

Tree No.	Common Name	Scientific Name	DBH (mm)	Height (m)	Spread (m)	Comments	Outcome
485	Broad-leaved Paperbark	<i>Melaleuca quinquenervia</i>	240	9	3		Retain
486	Broad-leaved Paperbark	<i>Melaleuca quinquenervia</i>	240	8	3		Retain
487	Broad-leaved Paperbark	<i>Melaleuca quinquenervia</i>	160	7	2		Retain
488	Broad-leaved Paperbark	<i>Melaleuca quinquenervia</i>	150	6	1		Retain
489	Broad-leaved Paperbark	<i>Melaleuca quinquenervia</i>	256	8	3	Multi-leadered from base	Retain
490	Swamp Box	<i>Lophostemon suaveolens</i>	200	9	4		Retain
491	Swamp Box	<i>Lophostemon suaveolens</i>	230	6	3	Termite nest	Retain
492	Broad-leaved Paperbark	<i>Melaleuca quinquenervia</i>	159	5	3		Retain
493	Broad-leaved Paperbark	<i>Melaleuca quinquenervia</i>	240	7	4		Retain
494	Broad-leaved Paperbark	<i>Melaleuca quinquenervia</i>	160	7	2		Retain
495	Broad-leaved Paperbark	<i>Melaleuca quinquenervia</i>	180	7	1		Retain
496	Swamp Box	<i>Lophostemon suaveolens</i>	240	6	4		Retain
497	Swamp Box	<i>Lophostemon suaveolens</i>	300	7	4		Retain
498	Broad-leaved Paperbark	<i>Melaleuca quinquenervia</i>	200	8	2		Retain
499	Swamp Box	<i>Lophostemon suaveolens</i>	220	8	4		Retain
500	Broad-leaved Paperbark	<i>Melaleuca quinquenervia</i>	180	8	3		Retain
501	Broad-leaved Paperbark	<i>Melaleuca quinquenervia</i>	200	7	3		Retain
502	Broad-leaved Paperbark	<i>Melaleuca quinquenervia</i>	225	7	3		Retain
503	Broad-leaved Paperbark	<i>Melaleuca quinquenervia</i>	283	8	2		Retain
504	Broad-leaved Paperbark	<i>Melaleuca quinquenervia</i>	160	7	2		Retain
505	Broad-leaved Paperbark	<i>Melaleuca quinquenervia</i>	150	6	2		Retain
506	Broad-leaved Paperbark	<i>Melaleuca quinquenervia</i>	200	7	2		Retain
507	Broad-leaved Paperbark	<i>Melaleuca quinquenervia</i>	150	6	2		Retain
508	Pink Bloodwood	<i>Corymbia intermedia</i>	403	12	8	Multi-leadered but fused	Retain
509	Black Sheoak	<i>Allocasuarina littoralis</i>	180	5	4		Retain
510	Swamp Box	<i>Lophostemon suaveolens</i>	200	7	4		Retain
511	Swamp Box	<i>Lophostemon suaveolens</i>	200	7	4		Retain
512	Swamp Box	<i>Lophostemon suaveolens</i>	280	9	5		Retain
513	Swamp Box	<i>Lophostemon suaveolens</i>	125	8	2		Retain
514	Broad-leaved Paperbark	<i>Melaleuca quinquenervia</i>	240	10	4		Retain
515	Broad-leaved Paperbark	<i>Melaleuca quinquenervia</i>	200	9	5		Retain
516	Broad-leaved Paperbark	<i>Melaleuca quinquenervia</i>	200	9	4		Retain
517	Swamp Box	<i>Lophostemon suaveolens</i>	200	6	4		Retain
518	Broad-leaved Paperbark	<i>Melaleuca quinquenervia</i>	160	7	4		Retain
519	Broad-leaved Paperbark	<i>Melaleuca quinquenervia</i>	220	10	4		Retain

Tree No.	Common Name	Scientific Name	DBH (mm)	Height (m)	Spread (m)	Comments	Outcome
520	Swamp Box	<i>Lophostemon suaveolens</i>	220	7	3		Retain
521	Swamp Box	<i>Lophostemon suaveolens</i>	140	5	4		Retain
522	Broad-leaved Paperbark	<i>Melaleuca quinquenervia</i>	140	6	2		Retain
523	Broad-leaved Paperbark	<i>Melaleuca quinquenervia</i>	140	7	3		Retain
524	Swamp Box	<i>Lophostemon suaveolens</i>	220	7	3		Retain
525	Broad-leaved Paperbark	<i>Melaleuca quinquenervia</i>	140	5	2	Lean	Retain
526	Broad-leaved Paperbark	<i>Melaleuca quinquenervia</i>	180	6	3		Retain
527	Broad-leaved Paperbark	<i>Melaleuca quinquenervia</i>	240	6	5		Retain
528	Red Ash	<i>Alphitonia excelsa</i>	200	8	2		Retain
529	Swamp Box	<i>Lophostemon suaveolens</i>	200	6	4		Retain
530	Swamp Box	<i>Lophostemon suaveolens</i>	170	6	5		Retain
531	Swamp Box	<i>Lophostemon suaveolens</i>	260	7	5		Retain
532	Swamp Box	<i>Lophostemon suaveolens</i>	200	8	4	Termite nest	Retain
533	Swamp Box	<i>Lophostemon suaveolens</i>	212	9	3	Multi-leadered from base	Retain
534	Broad-leaved Paperbark	<i>Melaleuca quinquenervia</i>	200	8	1		Retain
535	Swamp Box	<i>Lophostemon suaveolens</i>	180	8	2		Retain
536	Swamp Box	<i>Lophostemon suaveolens</i>	159	6	2		Retain
537	Red Ash	<i>Alphitonia excelsa</i>	259	8	4		Retain
538	Swamp Box	<i>Lophostemon suaveolens</i>	200	7	3		Retain
539	Swamp Box	<i>Lophostemon suaveolens</i>	283	8	5	Multi-leadered from base	Retain
540	Swamp Box	<i>Lophostemon suaveolens</i>	240	8	4		Retain
541	Black Sheoak	<i>Allocasuarina littoralis</i>	280	7	4	Poor health	Retain
542	Black Sheoak	<i>Allocasuarina littoralis</i>	320	6	6		Retain
543	Swamp Box	<i>Lophostemon suaveolens</i>	200	6	3		Retain
544	Broad-leaved Paperbark	<i>Melaleuca quinquenervia</i>	200	10	4		Retain
545	Swamp Box	<i>Lophostemon suaveolens</i>	180	8	3		Retain
546	Pink Bloodwood	<i>Corymbia intermedia</i>	200	8	2		Retain
547	Broad-leaved Paperbark	<i>Melaleuca quinquenervia</i>	210	12	6		Retain
548	Broad-leaved Paperbark	<i>Melaleuca quinquenervia</i>	266	9	5	Multi-leadered from base	Retain
549	Narrow-leaved Red Gum	<i>Eucalyptus seeana</i>	220	10	6		Retain
550	Swamp Box	<i>Lophostemon suaveolens</i>	130	6	4		Retain
551	Broad-leaved Paperbark	<i>Melaleuca quinquenervia</i>	180	10	2		Retain
552	Swamp Box	<i>Lophostemon suaveolens</i>	200	7	4		Retain
553	Red Ash	<i>Alphitonia excelsa</i>	160	6	2		Retain
554	Black Sheoak	<i>Allocasuarina littoralis</i>	300	6	4	One leader snapped out	Retain

Tree No.	Common Name	Scientific Name	DBH (mm)	Height (m)	Spread (m)	Comments	Outcome
555	Broad-leaved Paperbark	<i>Melaleuca quinquenervia</i>	150	9	2		Retain
556	Broad-leaved Paperbark	<i>Melaleuca quinquenervia</i>	212	9	2	Multi-leadered from base	Retain
557	Swamp Box	<i>Lophostemon suaveolens</i>	169	8	2		Retain
558	Pink Bloodwood	<i>Corymbia intermedia</i>	320	12	4		Retain
559	Broad-leaved Paperbark	<i>Melaleuca quinquenervia</i>	261	10	4		Retain
560	Broad-leaved Paperbark	<i>Melaleuca quinquenervia</i>	100	10	4	Multi-leadered from base	Retain
561	Swamp Box	<i>Lophostemon suaveolens</i>	150	6	3		Retain
562	Broad-leaved Paperbark	<i>Melaleuca quinquenervia</i>	350	9	6		Retain
563	Swamp Box	<i>Lophostemon suaveolens</i>	159	6	3		Retain
564	Narrow-leaved Red Gum	<i>Eucalyptus seeana</i>	220	12	6		Retain
565	Black Sheoak	<i>Allocasuarina littoralis</i>	234	8	3		Retain
566	Black Sheoak	<i>Allocasuarina littoralis</i>	300	10	6		Retain
567	Broad-leaved Paperbark	<i>Melaleuca quinquenervia</i>	160	10	3		Retain
568	Black Sheoak	<i>Allocasuarina littoralis</i>	340	8	4		Retain
569	Black Sheoak	<i>Allocasuarina littoralis</i>	140	6	2		Retain
570	Broad-leaved Paperbark	<i>Melaleuca quinquenervia</i>	240	8	4		Retain
571	Broad-leaved Paperbark	<i>Melaleuca quinquenervia</i>	150	8	3		Retain
572	Swamp Box	<i>Lophostemon suaveolens</i>	200	6	4	Termite nest	Retain
573	Black Sheoak	<i>Allocasuarina littoralis</i>	140	6	2		Retain
574	Broad-leaved Paperbark	<i>Melaleuca quinquenervia</i>	312	9	6		Retain
575	Broad-leaved Paperbark	<i>Melaleuca quinquenervia</i>	224	9	2		Retain
576	Broad-leaved Paperbark	<i>Melaleuca quinquenervia</i>	150	7	2		Retain
577	Narrow-leaved Red Gum	<i>Eucalyptus seeana</i>	200	9	4		Retain
578	Broad-leaved Paperbark	<i>Melaleuca quinquenervia</i>	300	10	6	Multi-leadered from base	Retain
579	Pink Bloodwood	<i>Corymbia intermedia</i>	280	10	4		Retain
580	Swamp Box	<i>Lophostemon suaveolens</i>	150	6	2		Retain
581	Swamp Box	<i>Lophostemon suaveolens</i>	180	7	3		Retain
582	Broad-leaved Paperbark	<i>Melaleuca quinquenervia</i>	180	8	2		Retain
583	Broad-leaved Paperbark	<i>Melaleuca quinquenervia</i>	169	10	2		Retain
584	Broad-leaved Paperbark	<i>Melaleuca quinquenervia</i>	168	8	4		Retain
585	Narrow-leaved Red Gum	<i>Eucalyptus seeana</i>	359	12	8		Retain
586	Black Sheoak	<i>Allocasuarina littoralis</i>	200	6	4		Retain
587	Dead	-	300	4	1		Retain
588	Black Sheoak	<i>Allocasuarina littoralis</i>	200	6	4		Retain
589	Black Sheoak	<i>Allocasuarina littoralis</i>	200	8	2		Retain

Tree No.	Common Name	Scientific Name	DBH (mm)	Height (m)	Spread (m)	Comments	Outcome
590	Hickory Wattle	<i>Acacia disparrima subsp. disparrima</i>	150	4	4		Retain
591	Black Sheoak	<i>Allocasuarina littoralis</i>	160	4	4		Retain
592	Black Sheoak	<i>Allocasuarina littoralis</i>	200	4	4		Retain
593	Broad-leaved Paperbark	<i>Melaleuca quinquenervia</i>	140	7	1		Retain
594	Black Sheoak	<i>Allocasuarina littoralis</i>	250	8	4	One leader snapped out	Retain
595	Black Sheoak	<i>Allocasuarina littoralis</i>	309	4	2		Retain
596	Black Sheoak	<i>Allocasuarina littoralis</i>	283	7	4	Multi-leadered from base	Retain

* - Denotes exotic species