

APPENDIX F

Landscape Concept Plan

Prepared by:

AGLA

LANDSCAPE CONCEPT PLAN



- 1 PROPOSED STREET TREE
Street tree in accordance with Council's Landscape Design & Street Trees Guidelines Refer Proposed Planting Schedule (ie: *Xanthostemon chrysanthus*)
- 2 LARGE FEATURE SHADE/ SCREEN TREE
Large canopied rounded tree species to provide shade over the frontage, provide visual amenity and landscape softening of the proposed development; Refer Proposed Planting Schedule (ie: *Cupaniopsis anacardioides*, *Flindersia australis*)
- 3 MEDIUM SHADE/ SCREEN TREES
Medium tree species to provide visual amenity and landscape softening of the proposed industrial development; Refer Proposed Planting Schedule (ie: *Elaeocarpus eumundii*, *Tristaniopsis laurina* Luscious, *Xanthostemon chrysanthus*)
- 4 SCREEN PLANTING
Planting to provide visual amenity and privacy screening; refer Proposed Planting Schedule (ie: *Syzygium australe* Resilience)
- 5 SHRUBS AND GROUNDCOVERS
Mass planting to large areas to assist in building presentation to the streetscape and to provide visual amenity; Refer Proposed Planting Schedule
- 6 FIRE RETARDANT GROUNDCOVERS
In addition to the isolated scattered tree planting, provide low form fire retardant groundcovers of species as advised in Part 5 of Bushfire Resilient Building Guidance for Queensland Homes with a max height of 300mm as advised in the Bushfire Report. Refer Proposed Planting Schedule (ie: *Carpobrotus glaucescens* Aussie Rambler, *Westringia* Flat n Fruity)

- "LEGEND"
- BUILDING/ ROOF OVER
Refer Architectural drawings
 - PROPOSED PROPERTY BOUNDARY
As taken from Survey drawings
 - EXISTING CONTOURS
As taken from Survey drawings
 - PROPOSED GARDEN EDGE
To future detail
 - PROPOSED APZ LINE
Refer Architectural drawings
 - PROPOSED RETAINING WALL
Refer Engineering drawings
 - PROPOSED NEW LOCATION OF RETAINING WALL
Refer Engineering drawings
 - PROPOSED ACOUSTIC FENCE
Refer Acoustic report
 - PROPOSED POOL TYPE FENCE ON TOP OF RETAINING WALL
Refer Architectural drawings

NEARMAP DATED: 29/07/23 (PHOTOMANIPULATED)

SOUTH ELEVATION - ALONG STONELEIGH WAY

SCALE NTS @A3



- 1 PROPOSED STREET TREE
Street tree in accordance with Council's Landscape Design & Street Trees Guidelines Refer Proposed Planting Schedule (ie: *Xanthostemon chrysanthus*)
- 2 LARGE FEATURE SHADE/ SCREEN TREE
Large canopied rounded tree species to provide shade over the frontage, provide visual amenity and landscape softening of the proposed development; Refer Proposed Planting Schedule (ie: *Cupaniopsis anacardioides*, *Flindersia australis*)
- 3 MEDIUM SHADE/ SCREEN TREES
Medium tree species to provide visual amenity and landscape softening of the proposed industrial development; Refer Proposed Planting Schedule (ie: *Elaeocarpus eumundii*, *Tristaniopsis laurina* Luscious, *Xanthostemon chrysanthus*)
- 4 SCREEN PLANTING
Planting to provide visual amenity and privacy screening; refer Proposed Planting Schedule (ie: *Syzygium australe* Resilience)
- 5 SHRUBS AND GROUNDCOVERS
Mass planting to large areas to assist in building presentation to the streetscape and to provide visual amenity; Refer Proposed Planting Schedule
- 6 FIRE RETARDANT GROUNDCOVERS
In addition to the isolated scattered tree planting, provide low form fire retardant groundcovers of species as advised in Part 5 of Bushfire Resilient Building Guidance for Queensland Homes with a max height of 300mm as advised in the Bushfire Report. Refer Proposed Planting Schedule (ie: *Carpobrotus glaucescens* Aussie Rambler, *Westringia* Flat n Fruity)

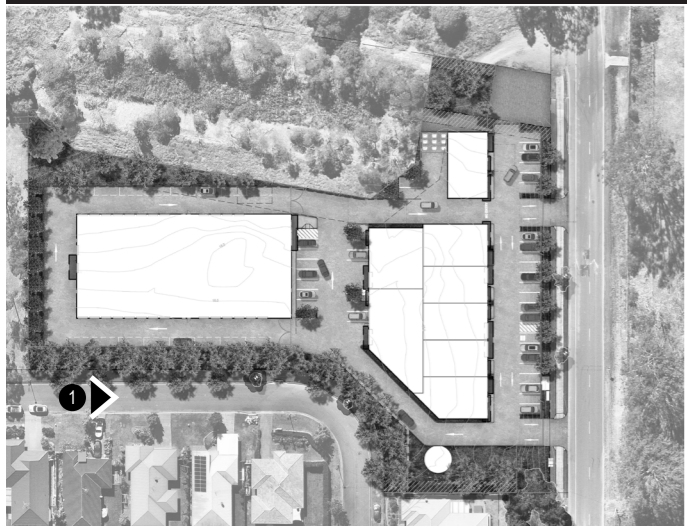
SECTION - A

SCALE 1:100 @ A3



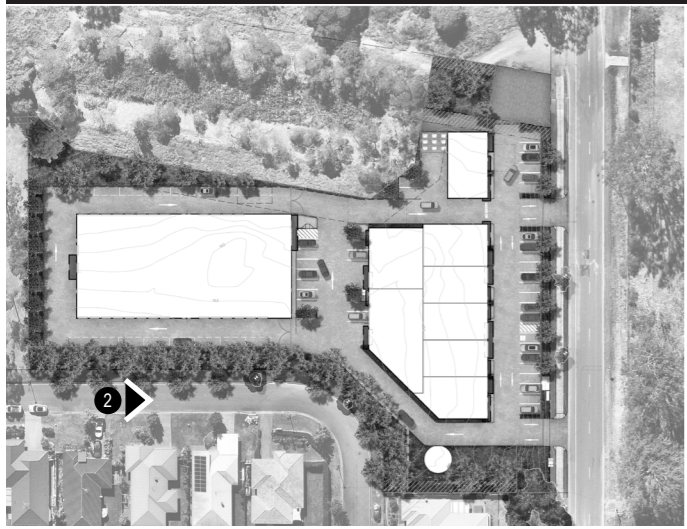
- 1 PROPOSED STREET TREE
Street tree in accordance with Council's Landscape Design & Street Trees Guidelines Refer Proposed Planting Schedule (ie: *Xanthostemon chrysanthus*)
- 2 LARGE FEATURE SHADE/ SCREEN TREE
Large canopied rounded tree species to provide shade over the frontage, provide visual amenity and landscape softening of the proposed development; Refer Proposed Planting Schedule (ie: *Cupaniopsis anacardioides*, *Flindersia australis*)
- 3 MEDIUM SHADE/ SCREEN TREES
Medium tree species to provide visual amenity and landscape softening of the proposed industrial development; Refer Proposed Planting Schedule (ie: *Elaeocarpus eumundii*, *Tristaniopsis laurina* Luscious, *Xanthostemon chrysanthus*)
- 4 SCREEN PLANTING
Planting to provide visual amenity and privacy screening; refer Proposed Planting Schedule (ie: *Syzygium australe* Resilience)
- 5 SHRUBS AND GROUNDCOVERS
Mass planting to large areas to assist in building presentation to the streetscape and to provide visual amenity; Refer Proposed Planting Schedule
- 6 FIRE RETARDANT GROUNDCOVERS
In addition to the isolated scattered tree planting, provide low form fire retardant groundcovers of species as advised in Part 5 of Bushfire Resilient Building Guidance for Queensland Homes with a max height of 300mm as advised in the Bushfire Report. Refer Proposed Planting Schedule (ie: *Carpobrotus glaucescens* Aussie Rambler, *Westringia* Flat n Fruity)





PERSPECTIVE View 1 - View from Stoneleigh Way

DISCLAIMER: This image is a conceptual rendering and is proposed for illustrative purposes only. The image does not represent the final proposal and elements in this depiction including but not limited to the scale, heights, colours, arrangement and materiality may change without notice prior to construction. The tree images shown here are close representative to the nominated species subject to stock images commercially available. The final locations and type of tree species are subject to approval from Council, and species may change prior to construction. The tree heights and widths as shown are for illustrative purposes and are subject to a range of factors and may be larger or smaller than shown on this image and should be used as a guide only.



PERSPECTIVE View 2 - View from Stoneleigh Way

DISCLAIMER: This image is a conceptual rendering and is proposed for illustrative purposes only. The image does not represent the final proposal and elements in this depiction including but not limited to the scale, heights, colours, arrangement and materiality may change without notice prior to construction. The tree images shown here are close representative to the nominated species subject to stock images commercially available. The final locations and type of tree species are subject to approval from Council, and species may change prior to construction. The tree heights and widths as shown are for illustrative purposes and are subject to a range of factors and may be larger or smaller than shown on this image and should be used as a guide only.



PERSPECTIVE View 3 - View from Stoneleigh Way

DISCLAIMER: This image is a conceptual rendering and is proposed for illustrative purposes only. The image does not represent the final proposal and elements in this depiction including but not limited to the scale, heights, colours, arrangement and materiality may change without notice prior to construction. The tree images shown here are close representative to the nominated species subject to stock images commercially available. The final locations and type of tree species are subject to approval from Council, and species may change prior to construction. The tree heights and widths as shown are for illustrative purposes and are subject to a range of factors and may be larger or smaller than shown on this image and should be used as a guide only.

PROPOSED PLANTING SCHEDULE



CODE	SPECIES	COMMON NAME	SIZE**	SPACING(m)	HEIGHT(m)	WIDTH (m)
PROPOSED STREET TREES						
1.1	<i>Xanthostemon chrysanthus</i>	Golden Penda	45L	as shown	12	6
PROPOSED LARGE FEATURE SHADE/ SCREEN TREES						
2.1	<i>Cupaniopsis anacardioides</i>	Tuckeroo	45L	as shown	15	10
2.2	<i>Flindersia australis</i>	Crows Ash	45L	as shown	30	12
PROPOSED MEDIUM SHADE/ SCREEN TREES						
3.1	<i>Elaeocarpus eumundii</i>	Smooth Leaved Quandong	45L	as shown	12	5
3.2	<i>Tristaniopsis laurina</i>	Luscious Water Gum	45L	as shown	10	5
3.3	<i>Xanthostemon chrysanthus</i>	Golden Penda	45L	as shown	12	6
PROPOSED SCREEN PLANTING						
4.1	<i>Buckinghamia celsissima</i>	Ivory Curl	45L	as shown	8	4
4.2	<i>Callistemon viminalis</i>	Wilderness White Bottlebrush	300mm	1.8	2.5	2
4.3	<i>Grevillea Moonlight</i>	Grevillea	300mm	2.5	5	3
4.4	<i>Syzygium australe</i>	Resilience Lillypilly	300mm	1.5	3	2

****PLANT CONTAINER SIZE:**

45L	45 Litre container stock min	Min. height at time of planting: 1.9-2.3m
300mm	300mm dia minimum pot size	

The spacing of plants shown on plan have been derived as a compromise between growth rate, anticipated size, and the ability to provide a good vegetative cover within a reasonable space of time.

PROPOSED PLANTING SCHEDULE



CODE	SPECIES	COMMON NAME	SIZE**	SPACING(m)	HEIGHT(m)	WIDTH(m)
PROPOSED SHRUBS AND GROUNDCOVERS						
5.1	<i>Carissa grandiflora</i>	Desert Star	200mm	0.7	1	1
5.2	<i>Dietes iridioides bicolor</i>	African Iris	140mm	0.8	1	1
5.3	<i>Kalanchoe bracteata</i>	Silver Teaspoons	200mm	0.8	1.2	1
5.4	<i>Lomandra hystrix</i>	Mat Rush	140mm	0.8	1.8	1.5
5.5	<i>Myoporum parvifolium</i> Yareena	Creeping Boobialla	140mm	1	0.1	1
5.6	<i>Rhabdolepis indica</i> Rapopink Oriental Pink	Indian Hawthorn Hybrid	200mm	0.8	1	1
5.7	<i>Westringia</i> Flat n Fruity	Prostrate Native Rosemary	140mm	1	0.3	2
5.8	<i>Westringia</i> Zena	Dwarf Rosemary	200mm	0.9	1	1

PROPOSED FIRE RETARDANT GROUNDCOVERS

Species as guided by Part 5 of Bushfire Resilient Building Guidance for Queensland Homes Appendix E

6.1	<i>Carpobrotus glaucescens</i> Aussie Rambler	Pigface	140mm	1.5	0.2	2
6.2	<i>Myoporum parvifolium</i> Fine Leaf	Creeping Boobialla	140mm	1	0.15	1-2
6.3	<i>Westringia</i> Flat n Fruity	Prostrate Native Rosemary	140mm	1	0.3	2

**PLANT CONTAINER SIZE:

200mm	200mm dia minimum pot size
140mm	140mm dia minimum pot size

The spacing of plants shown on plan have been derived as a compromise between growth rate, anticipated size, and the ability to provide a good vegetative cover within a reasonable space of time.