

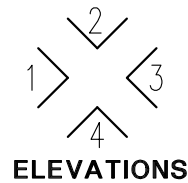
Earth Berm Wall (1.0 metres) to be Landscape planted.

LOGAN CITY COUNCIL
APPROVED PLAN OF DEVELOPMENT
This is the approved plan of development for Development Application
MCUR/191/2020

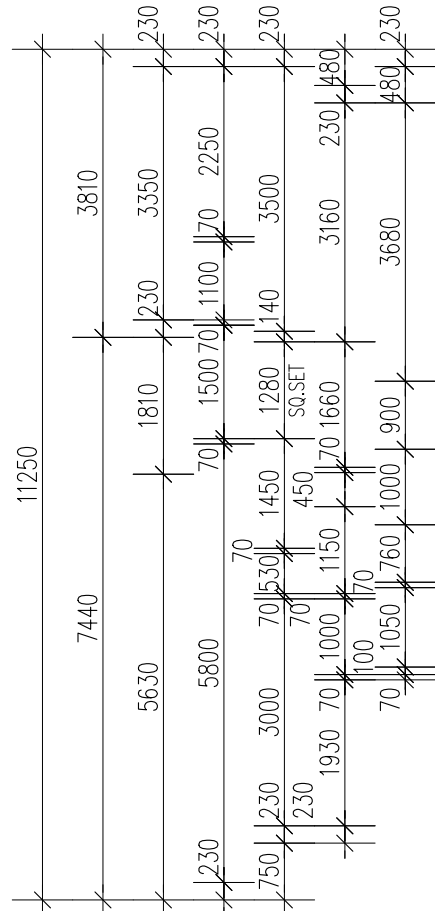
Sheet 1 of 3



Notes	Designed RDG	Everyday Engineers Planners & Surveyors ABN. 33 128 918 347 Mobile: 0432 124 461			Plan of Development 4586-4600 Mount Lindesay Highway NORTH MACLEAN	SCALE: NTS
	Drawn RDG					SHEET No.: 1 of 1
	Checked RDG					Drg. No.:
						152/2019/01
						A
			No.	Date	Revision	



ELEVATIONS



11250

7440

5630

5800

3000

1930

1000

1050

1000

900

760

1050

1000

1050

1000

900

760

1050

1000

900

760

1050

1000

900

760

1050

1000

900

760

1050

1000

900

760

1050

1000

900

760

1050

1000

900

760

1050

1000

900

760

1050

1000

900

760

1050

1000

900

760

1050

1000

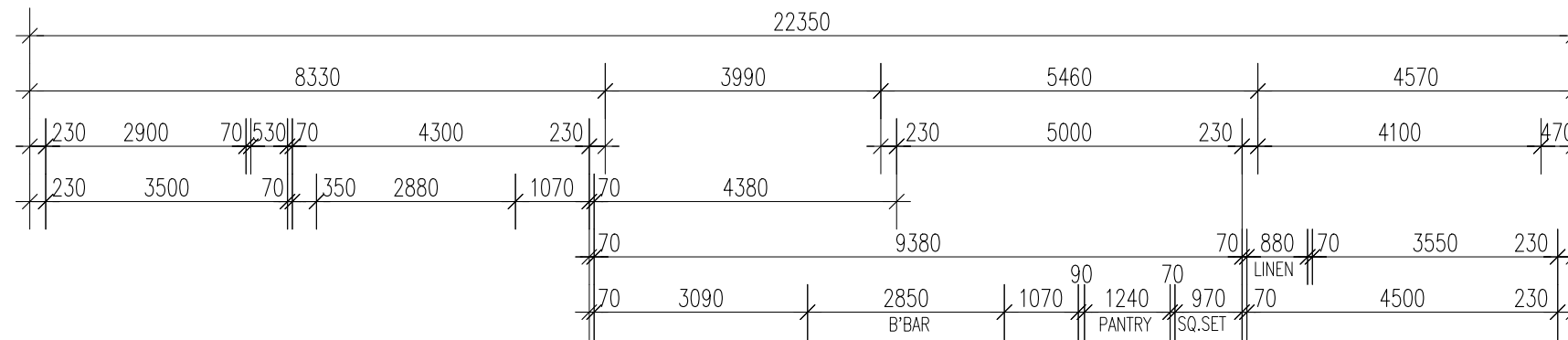
900

760

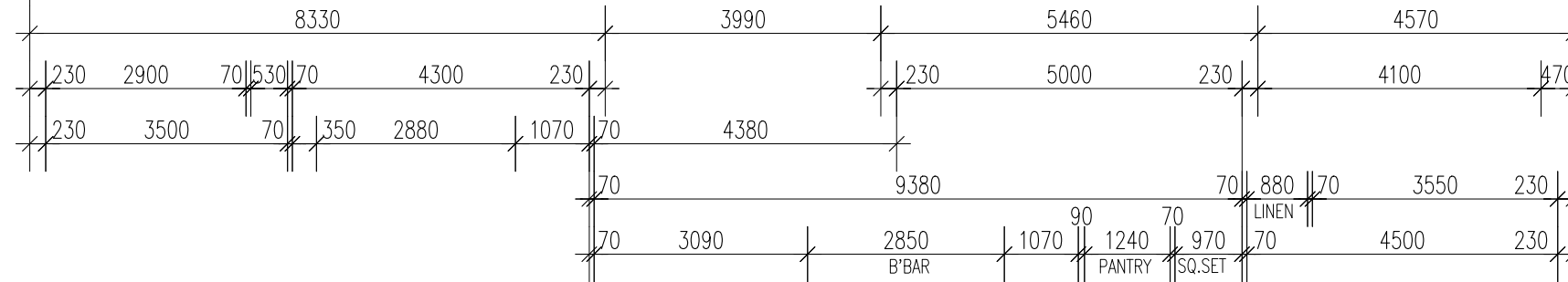
1050

1000

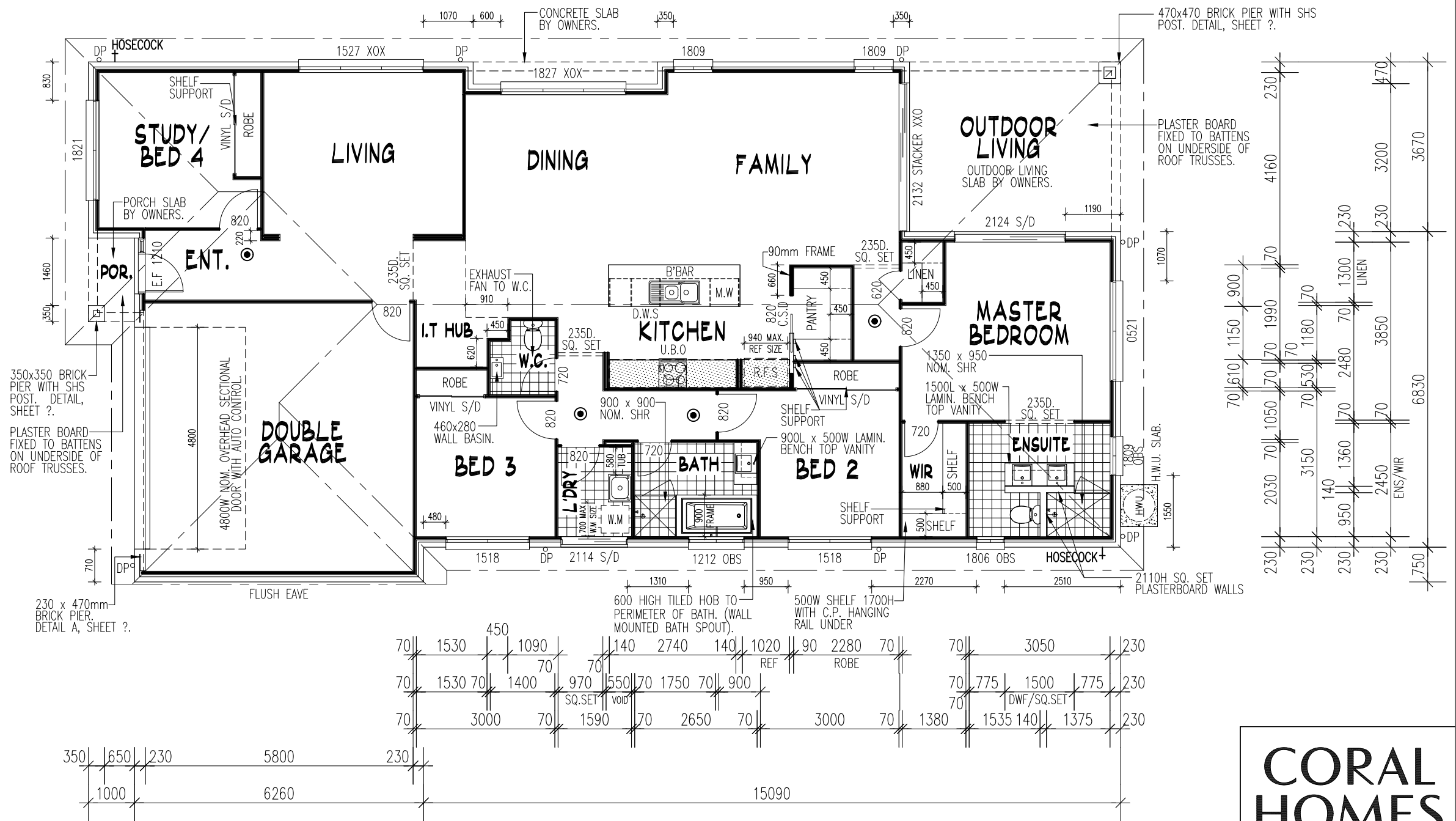
900



22350



NOOSAVILLE 25
DESIGNER FACADE



- LEGEND**
- RF.S FRIDGE PROVISION
 - W.O. WALL OVEN TOWER
 - MW MICROWAVE PROVISION
 - D.W. DISHWASHER PROVISION
 - B.BAR BREAKFAST BAR
 - W.M. WASHING MACHINE PROVISION
 - D.P. DOWNPIPE
 - OBS OBSCURE GLASS
 - AWN AWNING WINDOW
 - F/G FIXED GLASS TO ALL PANELS
 - D/H DOUBLE HUNG WINDOW
 - PB SET WINDOW REVEAL (SUITS TILING)
 - S/D GLASS SLIDING DOOR (EXTERNAL)
 - STACKER GLASS STACKER DOOR (EXTERNAL)
 - XO SLIDING PANEL/ FIXED PANEL
 - C.S.D. INTERNAL CAVITY SLIDING DOOR
 - SQ SET 3000 SQUARE SET P'BOARD BULKHEAD
 - 820 SIZE OF TIMBER DOOR (WIDTH)
 - 21-18 SIZE OF WINDOW (2100H x 1800W)
 - P.C.J. PLASTERBOARD CEILING CONTROL JOINT
 - PH.▽ PHONE POINT
 - DA.▼ DATA POINT
 - GAS▼ GAS BAYONET POINT
 - LOCATION OF SMOKE ALARM.
(TO COMPLY WITH B.C.A CLASS 1 & 10 PART 3.7-2 & WITH A.S 3786.

NOTES

WRITTEN DIMENSIONS WILL TAKE PRECEDENCE OVER SCALE.
ALL INTERNAL DIMENSIONS STATED ARE FRAME SIZE - EXCLUDING LININGS.
ALL WINDOWS TO BE SLIDING U.N.O.

AREA:--	
LIVING:--	177.40m ²
GARAGE:--	36.59m ²
O'DR LIV:--	16.77m ²
PORCH:--	1.81m ²
TOTAL AREA:--	232.57m ²
PER LENGTH:--	68.16m
ROOF AREA:--	265.82m ²
PER LENGTH:--	70.30m

FLOOR PLAN LAYOUT

Sheet 2 of 3

LOGAN CITY COUNCIL

APPROVED PLAN OF DEVELOPMENT

This is the approved plan of development for Development Application

MCUR/191/2020

THE COPYRIGHT IN THIS SET OF DRAWINGS IS OWNED BY THE CORAL HOMES GROUP. THESE DRAWINGS MAY NOT BE REPRODUCED COPIED / DEALT WITH IN ANY MANNER WHICH INFRINGES THE EXCLUSIVE RIGHTS OF THE CORAL HOMES GROUP AS PRESCRIBED BY THE COPYRIGHT ACT 1968, WITHOUT THE EXPRESS WRITTEN AUTHORISATION OF THE CORAL HOMES GROUP.

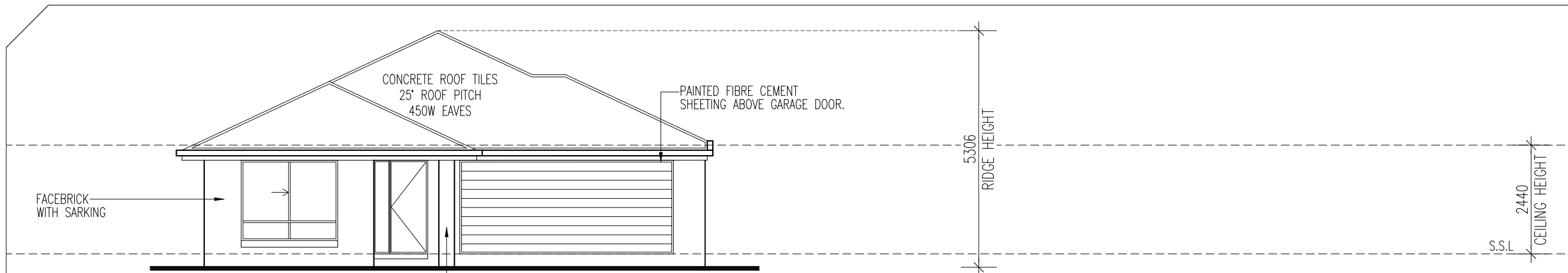
CORAL HOMES

QBCC 50792/1014053
OFT 62084C

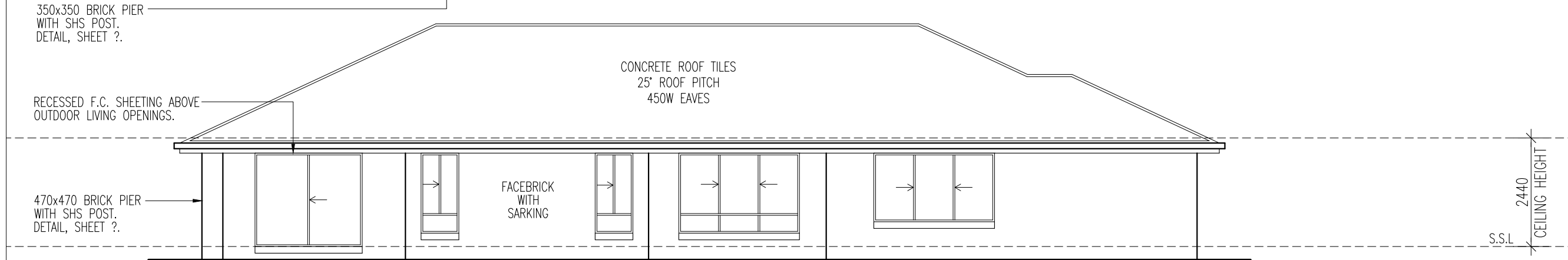
DRAWING
FLOOR PLAN LAYOUT

SCALE:	1:100
SHEET	1
REV.1:17.10.19-DCR	

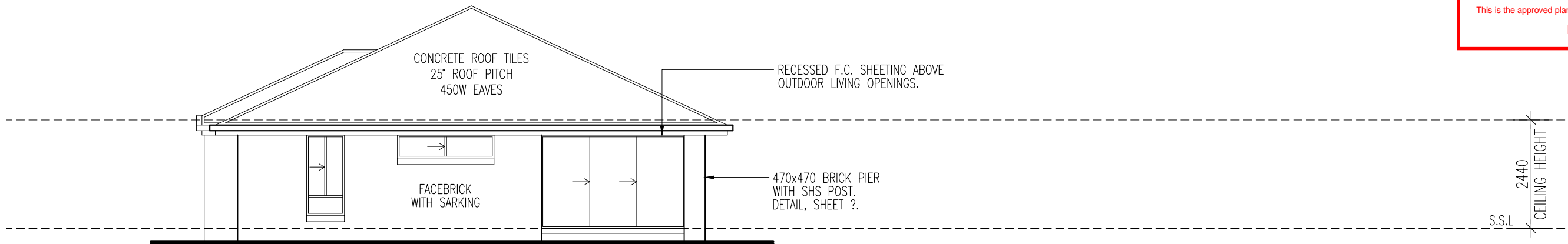
© THE CORAL HOMES GROUP ALL RIGHTS RESERVED.



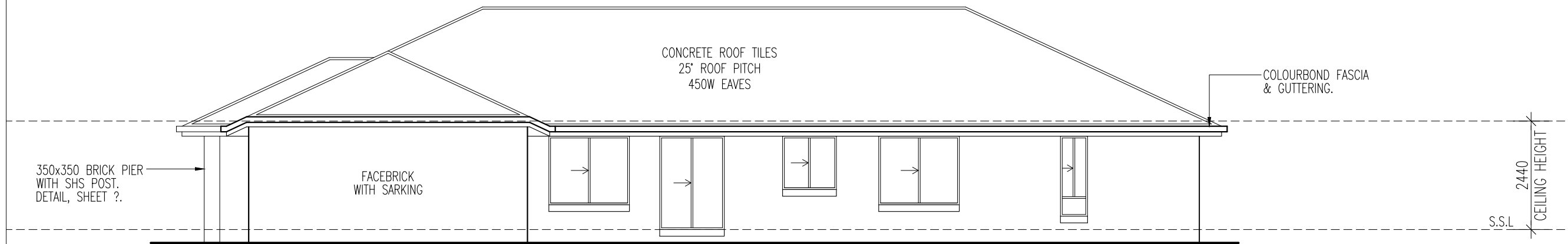
ELEVATION 1.



ELEVATION 2.



ELEVATION 3.



ELEVATION 4.

IMPORTANT NOTICE:
ALL WINDOWS TO FLOOR LEVELS WHICH ARE 2m OR MORE ABOVE THE SURFACE BENEATH MUST HAVE A BARRIER AT A HEIGHT NO LESS THAN 865mm AND THE OPENING PANEL ABOVE BE RESTRICTED TO A MAXIMUM OF 125mm OR HAVE A BARRIER WHICH CAN RESIST A MINIMUM OF 250N OF OUTWARD HORIZONTAL ACTION.

IMPORTANT NOTICE:
THERE ARE NO ATYPICAL DESIGN FEATURES IN THIS CONSTRUCTION THAT PRESENT UNUSUAL WORKPLACE, HEALTH & SAFETY ISSUES IN THE CONSTRUCTION, MAINTENANCE, USE OR DEMOLITION OF THIS STRUCTURE.

NOOSAVILLE 25 DESIGNER FACADE

LOGAN CITY COUNCIL
APPROVED PLAN OF DEVELOPMENT
This is the approved plan of development for Development Application MCUR/191/2020

Sheet 3 of 3

CORAL HOMES
QBCC 50792/1014053
OFT 62084C

DRAWING
ELEVATIONS

SCALE:	1:100	REV.1:17.10.19-DCR
SHEET	2	

© THE CORAL HOMES GROUP
ALL RIGHTS RESERVED.