

1. GENERAL

1.1. Read Drawings in conjunction with all Architectural and other Consultants' drawings and Specifications and such other written instructions as may be issued during the course of the contract. Unless noted otherwise (U.N.O.) obtain all dimensions from the Architectural drawings. These drawings are prepared from limited information from site. Refer any discrepancies in these documents to the Architect before proceeding with the work.

1.2. Check and be responsible for the correctness of all dimensions and report any discrepancy immediately to the Architect. Do NOT scale dimensions from the drawings.

1.3. Ensure stability of the works during construction, and that of the adjacent structures, including excavations in the vicinity. Ensure no part of the existing and new structure is overstressed.

1.4. Ensure all workmanship and materials are in accordance with the requirements of the current SAA Codes with Amendments and the By-laws and Ordinances of the relevant Building Authority and the Specification.

1.5. Design Loads:

Live Load:

Floor:
Roof:
Wind $V_w = 50\text{m/s}$

2. CONCRETE

2.1. Ensure all workmanship and materials are in accordance with the current SAA Code AS 3600, except where varied by the contract documents.

2.2. Concrete Quality

Element:	All
Grade (MPa)	32
Max. Slump (mm)	80
Max. Aggregate (mm)	20
Cement type	A
Admixture	NONE

2.3. Provide clear concrete cover to reinforcement, as per AS 3600 or as below, whichever ever is the more severe requirement:

External members (Class B2)	50mm
Internal members (Class A1)	20mm
Members cast against ground	65mm
Members cast against ground with membrane	30mm

2.4. Mechanically vibrate all concrete. Do not use the vibrator to spread concrete.

2.5. Reinforcement is shown diagrammatically and is not necessarily shown in true projection.

2.6. Do not weld reinforcement unless shown on Structural Drawings.

2.7. Cog ALL top bars at slab edges.

2.8. Unless noted otherwise provide 350mm minimum end laps to fabric and lap slab, beam bars as noted below. Securely tie all reinforcement at all laps and intersections with 1.25mm black annealed wire.

Bar Diameter	Lap Length (mm)
N12	400
N16	550
N20	750
N24	1000

2.9. Support reinforcement on approved plastic or plastic tipped wire stools on flat plates at not more than one metre centres both ways in slabs.

2.10. Supply fabric in flat sheets. Do not use rolls.

2.11. Cure concrete for a minimum period of Seven days.

3. STRUCTURAL STEELWORK

3.1. Ensure all workmanship and materials are in accordance with current SAA Codes: AS 1112, AS1163, AS 4100, AS1554 & the A.C.S.E structural steel fabrication and erection specifications except where varied by the contract documents.

3.2. Unless noted otherwise ensure all steel is in accordance with:

AS 3678	Structural Steel Hot-Rolled Floor Plates and Slabs
AS 3679	Structural Steel
AS 3679.1	Hot-Rolled Bars and Sections
AS 1538	Cold Formed Steel Structures Code

3.3. Unless noted otherwise use 6mm continuous fillet weld, All bolts 20mm diameter Grade 8.8/S hot dip galvanised (Do not use bolt threads within the load-bearing length)

3.4. Where indicated on the drawings use complete penetration butt welds as defined in AS 1554 and grind smooth.

3.5. Unless noted otherwise use weld category GP to AS 1554.1

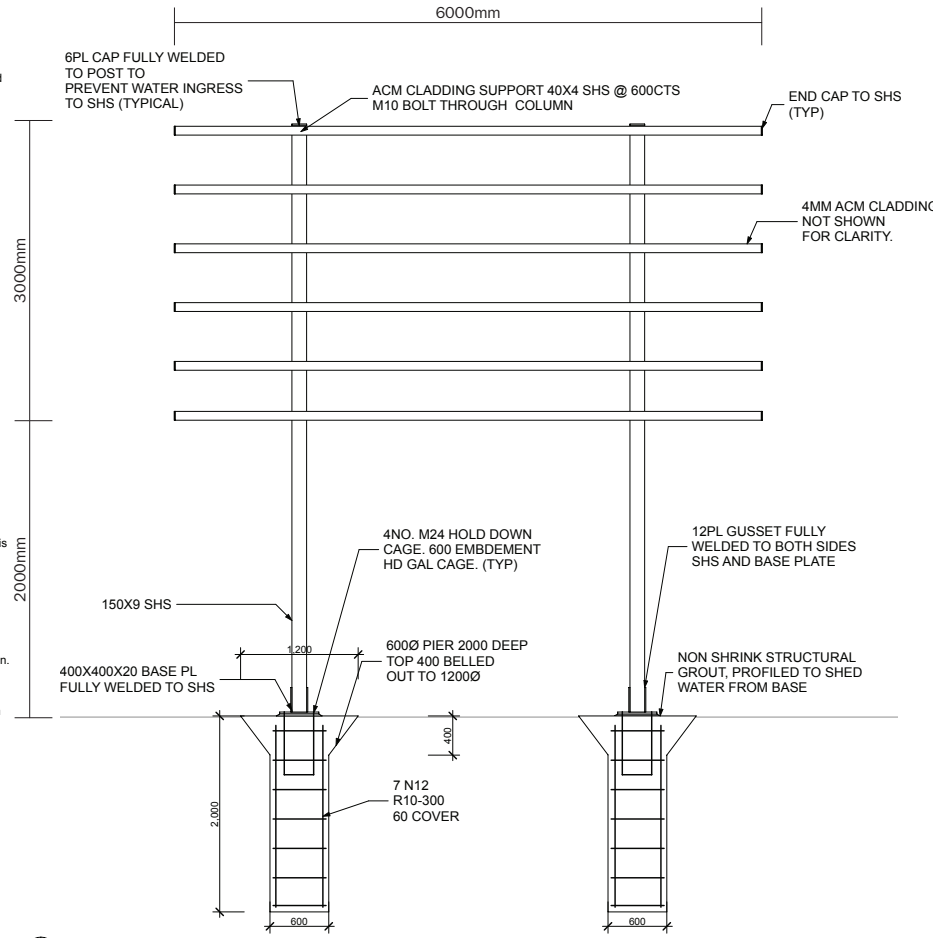
3.6. Supply galvanised bolts, nuts and washers, etc. in accordance with AS 1214.

3.7. Provide all cleats and drill all holes necessary for fixing steel to steel and timber to steel whether or not detailed in the drawings.

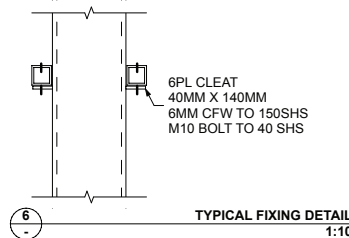
3.8. Provide steelwork not concrete encased with the surface treatment in accordance with the following specifications.

Element:	Surface Cleaning to AS1627 Part 4	Coating
Internal	Class 1 Blast	Grey Zinc Phosphate primer to 70µm/ R.O.Z.P.-1 coat.
All External steel work or in contact with External walls/ cavities	Class 2.5 Blast	Hot dip galvanise after fabrication to AS 4680.

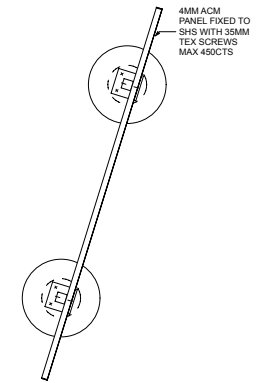
3.9. Studs abutting columns shall be gun fixed at 300max cts. Column faces abutting brickwork shall have approved frame ties gun fixed at 3 course cuts for building into bed joints UNO.



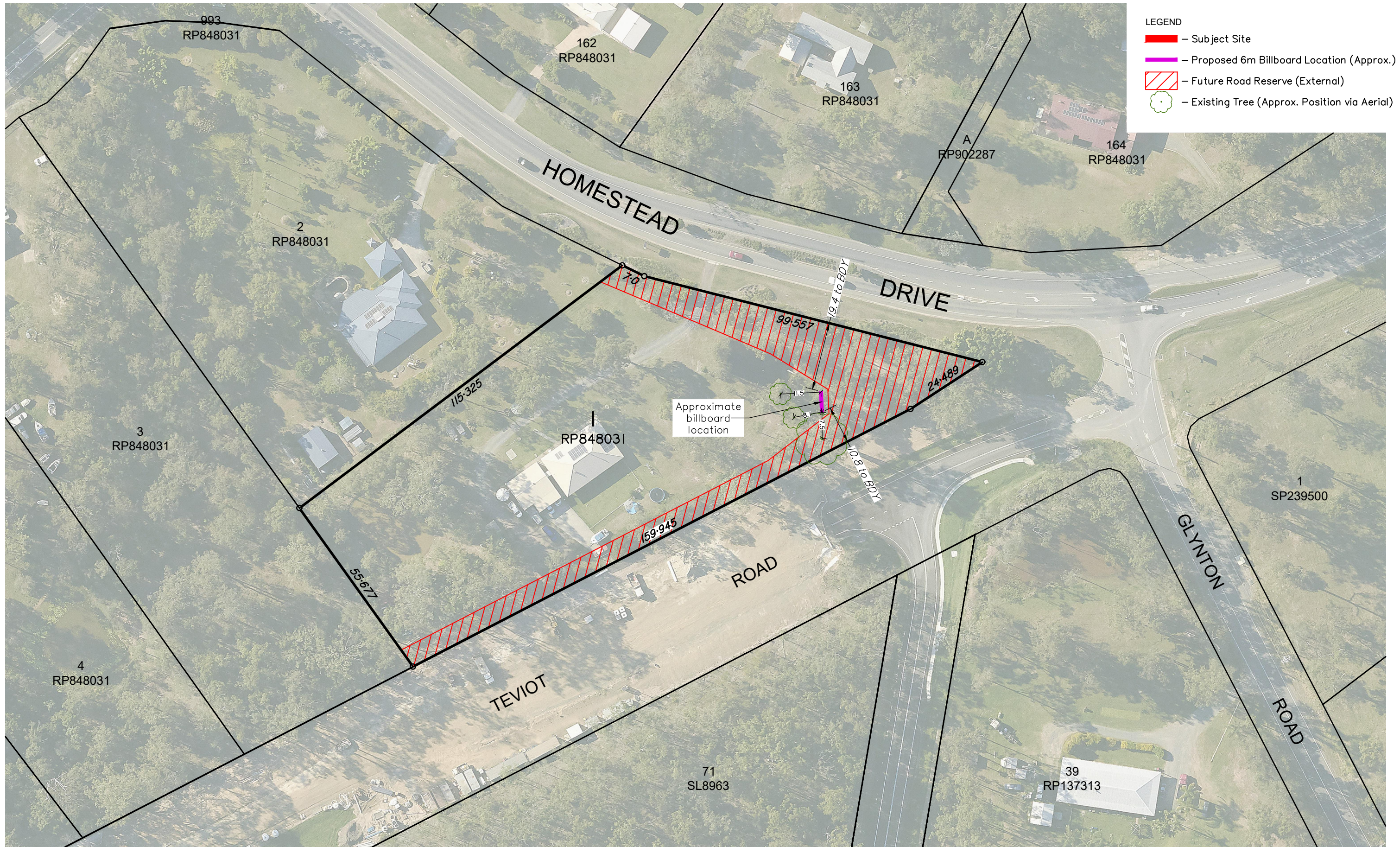
TYPICAL SIGN ELEVATION
1:50



TYPICAL FIXING DETAIL
1:10



PLAN
1:50



LEGEND

- Subject Site
- Proposed 6m Billboard Location (Approx.)
- Future Road Reserve (External)
- Existing Tree (Approx. Position via Aerial)



urban planning, surveying & development

Brisbane
 PO Box 3128, West End QLD 4101
 Ph: 07 3118 0600
 brisbane@dtsqld.com.au


Mackay
 PO Box 11711, Mackay Caneland QLD 4740
 Ph: 1300 278 783
 mackay@dtsqld.com.au

Issue	Revision	Int	Date
A	Original issue	NQ	4/03/25
B	Added dims	AV	5/03/25
C	Removed excess info	AV	12/03/25
D	Aerial, trees, road widening	AV	12/05/25

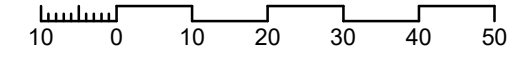
SITE PLAN (Proposed Billboard Location)
2-12 Homestead Drive, Flagstone (Riverbend)

Description
 Local Authority
 Client

Lot 1 on RP848031
 Logan City Council
 Goodrock Property



SCALE 1:1000 @ A3



This plan has been prepared by DTS as a proposal plan and should not be used for any other purpose. The information contained on this plan is approximate only, has not been verified and may be subject to change. The intellectual property on this plan remains the property of DTS.

Project **BNE220641**
 File **B220641SK1.dwg**
 Date **12/05/2025**

Drawing **A3 6947**
 Revision **C**
 Sheet **1 of 1**