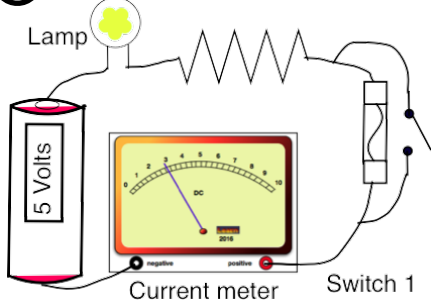
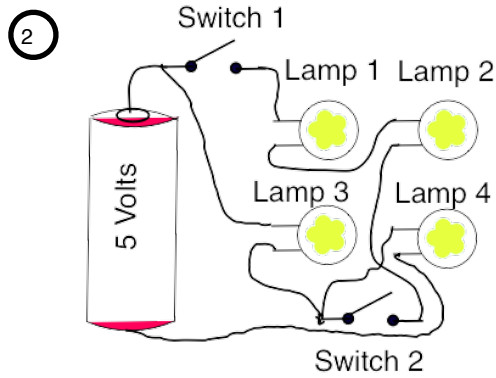


1 QUIZ 1, practice 10 MARKS



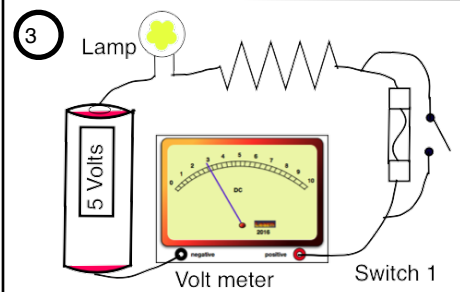
When the switch is open, the lamp will not glow.

True or False (circle correct)



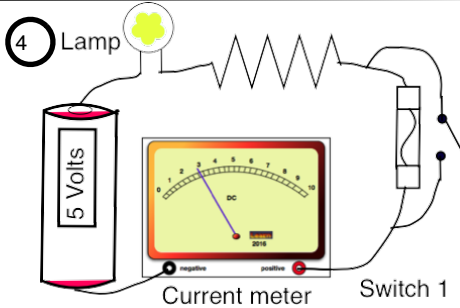
With the switch 1 closed and switch 2 open,

- A. no lamps on
- B. all lamps on
- C. only lamps 3 and 4 on
- D. only lamp 3 on



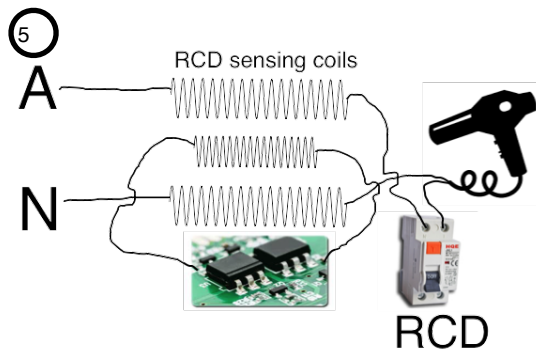
2 marks

Redraw this circuit to show how it would be if it were correct:



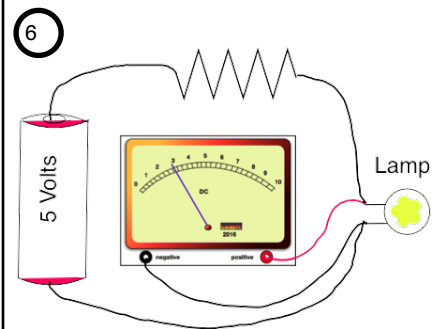
The resistor is made smaller:

- A. Current increases
- B. Voltage increases
- C. Current decreases
- D. Lamp will be dimmer



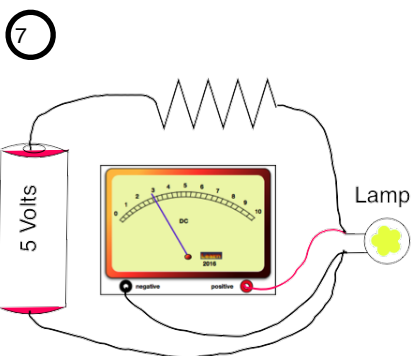
The RCD:

- A. protects properties from circuit overload
- B. uses current imbalance to shut off the power.
- C. Remote current detection system for commercial buildings only.
- D. only works with dry floors



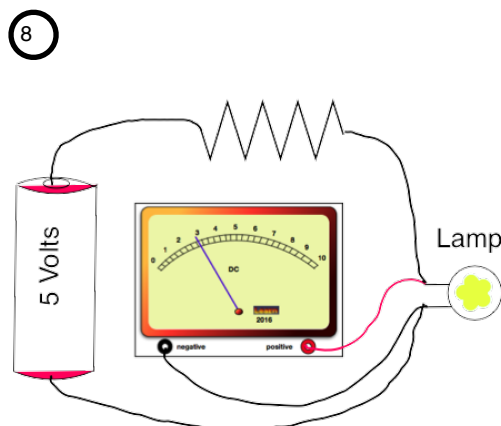
The meter is reading:

- A. Current
- B. Voltage
- C. Lamp Brightness
- D. Battery capacity



The meter is connected:

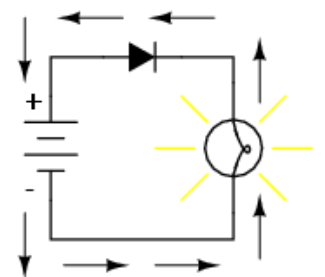
- A. in series with lamp
- B. as a load with lamp
- C. In parallel with lamp
- D. in parallel with resistor



The low meter reading is due to:

- A. A flat battery
- B. A faulty bulb
- C. A faulty meter
- D. A resistor
- E. All of the above

9 *Current shown using flow notation*



Current shown using _____ flow notation:

- A. Faraday's
- B. Resistance
- C. Electron
- D. Conventional