



BRA ZIL MOD ERN

Debuting in Australia,
exclusive to Melbourne

Wed 18 - Sun 22 March, 2020

LEONARD JOEL

Est 1919



Anna Grassham
Head of Modern Design
anna.grassham@leonardjoel.com.au
etel.design
mamacasa.com.au

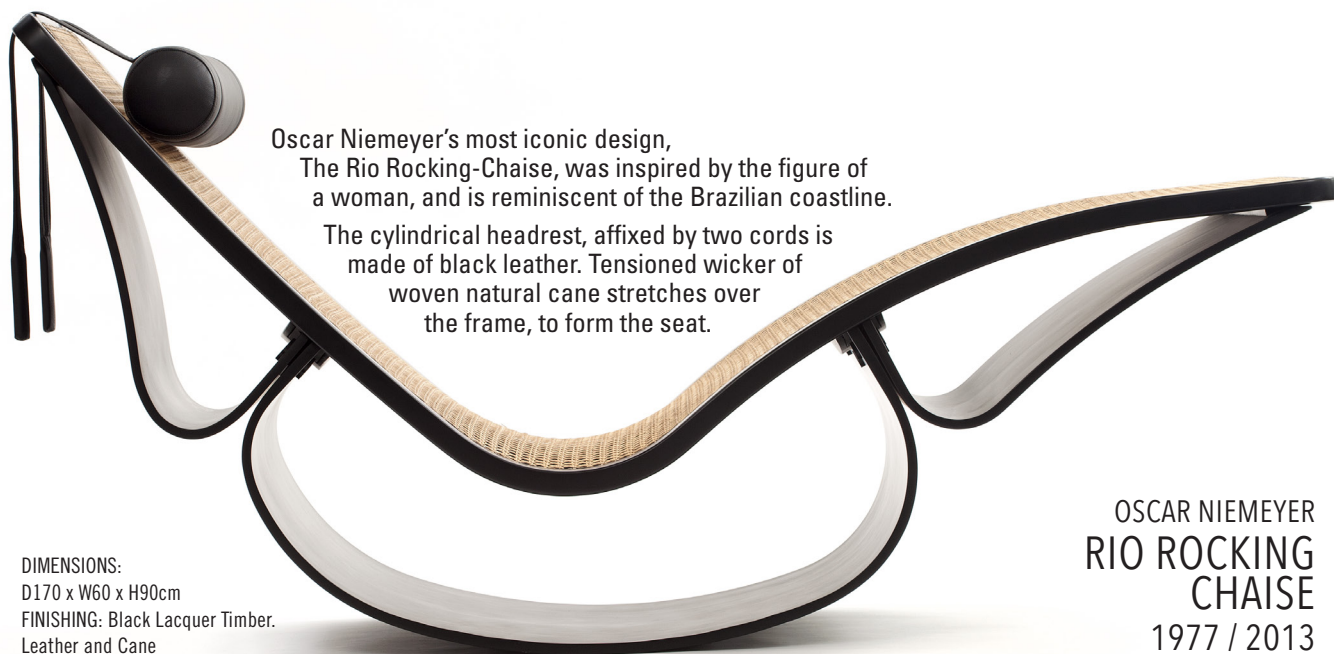


It is with great pleasure that Leonard Joel, in collaboration with Mama Casa, presents highlights of ETEL's Brazil Modern collection, for sale and viewing in an Australian debut.

This collection brings together iconic pieces by Brazil's most renowned designers from the mid century period. We are thrilled to showcase these pieces in a curated exhibition at Leonard Joel Melbourne.

The collection features works by Oscar Niemeyer in collaboration with his daughter Anna, Jorge Zalsupin, Lina Bo Bardi and Zanine Caldas, alongside pieces by contemporary designers Etel Carmona and Lia Siqueira. The pieces are exquisitely crafted by skilled artisans, honouring traditional techniques, and bringing a deep understanding of native Brazilian wood to their work. All pieces are handmade to order, with an embedded seal certifying the authenticity of the piece, provided by the foundation representing the designer.

Do not miss this rare opportunity to acquire a piece of handcrafted furniture by one of Brazil's most iconic designers. We hope you enjoy the ETEL collection as much as we do.



Oscar Niemeyer's most iconic design, The Rio Rocking-Chaise, was inspired by the figure of a woman, and is reminiscent of the Brazilian coastline.

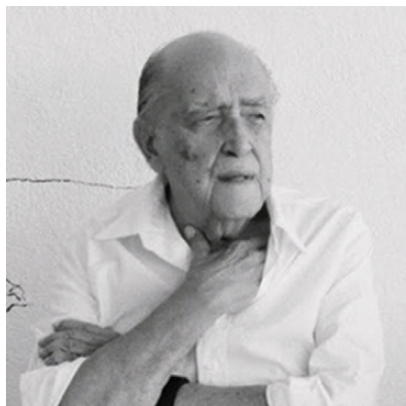
The cylindrical headrest, affixed by two cords is made of black leather. Tensioned wicker of woven natural cane stretches over the frame, to form the seat.

DIMENSIONS:
D170 x W60 x H90cm
FINISHING: Black Lacquer Timber.
Leather and Cane

OSCAR NIEMEYER
RIO ROCKING
CHAISE
1977 / 2013



Handmade to order. Embedded seal certifying it's authenticity by the Fundação Oscar Niemeyer and part of the ETEL collection.



OSCAR NIEMEYER

1905 - 2012

Every line drawn by architect Oscar Niemeyer had the power to charm the eye and make history. But his curves were not limited to remarkable architecture. The architect, who made history by designing several landmark buildings in Brasília, Rio de Janeiro, São Paulo and around the world, also created sculptural pieces of furniture.

The desire to create his own furniture was born out of frustration; he often thought furniture would detract from modernist and contemporary architecture. So he decided to design his own.

Together with his daughter, Anna Maria, he designed the iconic Rio rocking chair, the Marquesa bench and the Alta armchair. He would later create the ON line: a desk, a sofa and an armchair that reflected the famous curves of his architecture.

niemeyer.org.br
etel.design
mamacasa.com.au

OSCAR NIEMEYER
ON DINING TABLE
1971 / 2013
LACQUERED TIMBER

DIMENSIONS:
S - 160 dia x 73 cm
L - 180 dia x 73 cm



OSCAR NIEMEYER
MARQUESA BANCO
1974 / 2013

DIMENSIONS: D55 x W240 x H80cm
FINISHING: Black Lacquer Timber and Cane.



"We hated Bauhaus. It was a bad time in architecture. They just didn't have any talent. All they had were rules. Even for knives and forks they created rules. Picasso would never have accepted rules... The rule is the worst thing. You just want to break it." Oscar Niemeyer

OSCAR NIEMEYER
MÓDULO COFFEE TABLE
1977/ 2018



D60 x W118 x H25cm LACQUERED TIMBER

OSCAR NIEMEYER
MÓDULO ARMCHAIR
& OTTOMAN
1977/ 2018



UPHOLSTERED LACQUERED TIMBER **ARMCHAIR** D69 x W112 x H54cm **OTTOMAN** D69 x W72 x H24cm



OSCAR NIEMEYER
ALTA ARMCHAIR & OTTOMAN
1977 / 2013 - LACQUERED TIMBER

ARMCHAIR D170 x W60 x H90
OTTOMAN D71 x W71 x H41
FINISHING: Black Lacquered Timber.
Fabric or Leather.



ARMCHAIR: D71 x W102 x H70cm
FINISHING: Steel. Fabric or Leather.

OSCAR NIEMEYER
ALTA ARMCHAIR & OTTOMAN
1977 / 2013 - STEEL



OSCAR NIEMEYER
ON ARMCHAIR, SOFA & DESK
1980 / 2013

ARMCHAIR: D85 x W110 x H70cm
SOFA 2 SEAT: D85 x W180 x H70cm
SOFA 3 SEAT: D85 x W245 x H70cm
FINISHING: Fabric or Leather.
TIMBERS: Cedar, Freijo, American Walnut





LINA BO BARDI

1914 - 1992

Italian-born, Bo Bardi studied under radical Italian architects, but quickly became intrigued with modern Brazilian architecture. Bo Bardi and her husband were involved in the Italian resistance movement, and found life in post-war Italy difficult. In October 1946 Bo Bardi and her husband moved to South America.

During her lifetime it was difficult for her to be accepted among the local architects, because she was both a "foreigner" and a woman.

However she found in São Paulo a fertile home for her modernist style of architecture in the 1950s and 1970s.

She designed the unconventional in many buildings that would become architectural landmarks, such as the São Paulo Museum of Art (MASP), the Museum of Modern Art of Bahia (MAM-BA), the Sesc Pompeia complex and her own Casa de Vidro (Glass House), which currently houses the Institute named after her.

institutobardi.com.br
etel.design
mamacasa.com.au

LINA BO BARDI
LBB TROLLEY
 1948 / 2017

DIMENSIONS
 D99 x W50 x H62.5cm

TIMBER: Cedar,
 Freijo, Imbuia,
 Sucupira



LINA BO BARDI
TRÊS PÉS ARMCHAIR
 1951 / 2015

DIMENSIONS: D80 x W63 x H75cm
 FINISHING: Leather, Iron,

LINA BO BARDI
BOLA DE LATÃO
ARMCHAIR
 1951 / 2015

DIMENSIONS
 D85 x W71.5 x H79cm
 FINISHING:
 Leather, Iron, Brass



LINA BO BARDI
LBB SIDE TABLES
 1949 / 2017

DIMENSIONS D60 x W90 x H50cm
 TIMBER: Cedar, Freijo, Imbuia,
 Sucupira

LINA BO BARDI
LBB ROCKING ARMCHAIR
 1951 / 2015

DIMENSIONS
 D91 x W65 x H81.5cm

FINISHING:
 Leather, Fabric
 TIMBER: Cedar,
 Freijo, Imbuia,
 Sucupira





JORGE ZALSZUPIN

At age 15 he was drawn irresistibly by a book he saw in the window of a bookstore, and became hopelessly seduced by the work of Le Corbusier.

A Polish Jew, Jorge Zalszupin fled his country during World War II to take refuge in Romania. He studied during WW2 and, when he graduated in 1945, felt so disillusioned with the devastation he saw in his hometown he decided to leave Poland.

After a short stay in France he moved to Brazil, where he found the right conditions to develop his unique, poetical, sensual and modern brand of architecture.

Demand for his comfortable, timeless furniture was such that he established L'Atelier to manufacture and retail his designs. In the 1960s and 1970s his work could be seen in almost every public building in Brasília.

jorgezalszupin.com
etel.design
mamacasa.com.au

JORGE ZALSZUPIN BRASILIANA SOFA AND ARMCHAIR 1965 / 2006

ARMCHAIR:
D93x W104 x H62cm

SOFA: 3 sizes

FINISHING: Leather or Fabric
TIMBERS:
American Walnut, Ironwood



JORGE ZALSZUPIN PÉTALAS COFFEE TABLE 1959 / 2016

DIMENSIONS:
D140 x W140 x H30cm
D100 x W100 x H30cm
TIMBER: Ironwood

JORGE ZALSZUPIN LENÇO COFFEE TABLE 1959 / 2016



DIMENSIONS: D94 x W94 x H28 TIMBER: Ironwood



JORGE ZALSZUPIN ANDORINHA COFFEE TABLES 1959 / 2016

DIMENSIONS: D55.8 x W105 x H28cm
FINISH: Leather magazine pouch
TIMBER: American Walnut, Ironwood



DIMENSIONS:
D45 x W45 x H50cm
TIMBER: Freijo, Imbuia,
American Walnut, Ironwood

JORGE ZALSZUPIN PAULISTANA ARMCHAIR 1965 / 2006



DIMENSIONS:
D267 x W262 x H236cm
Stainless steel base



All pieces are handmade to order. Embedded seal certifying it's authenticity by the Fundação Jorge Zalszupin and part of the ETEl collection.



JORGE ZALSZUPIN
PRESIDENCIAL SOFA AND ARMCHAIR
1959 / 2015



JORGE ZALSZUPIN
ADRIANA ARMCHAIR
1962 / 2011

DIMENSIONS:
D65 x W70 x H60cm
FINISHING: Leather, Fabric
TIMBERS: Cedar, Freijo,
Imbuia, Sucupira



JORGE ZALSZUPIN
DINAMARQUESA ARMCHAIR
1960 / 2016 UPHOLSTERED TIMBER



DIMENSIONS:
D75 x W70 x H67cm
FINISHING: Leather, Fabric
TIMBER: Imbuia, Sucupira

ARMCHAIR:
D76 x W108 x H74cm
SOFA: D76 x W185 x H75.5cm,
D76 x W211 x H75.5cm
FINISHING: Leather or Fabric
TIMBERS: American Walnut,
Ironwood

JORGE ZALSZUPIN
ANNETTE ARMCHAIR
& OTTOMAN
1959 / 2006



DIMENSIONS:
D75.5 x W75.5 x H68.5cm
FINISHING: Leather, Fabric
TIMBER: Cedar, Freijo, Imbuia,
Sucupira



TRIDENT
ARMCHAIR
LINA BO BARDI



R
ARMCHAIR
ZANINE CALDAS



F
ARMCHAIR
ZANINE CALDAS



H
ARMCHAIR
ZANINE CALDAS



ZC1
ARMCHAIR
ZANINE CALDAS



CUCA
ARMCHAIR
ZANINE CALDAS



ZANINE
ARMCHAIR
ZANINE CALDAS



ONDINE
ARMCHAIR
JORGE ZALSZUPIN



DINAMARQUESA
ARMCHAIR
JORGE ZALSZUPIN



PRESIDENCIAL
ARMCHAIR
JORGE ZALSZUPIN



ANNETTE
ARMCHAIR
JORGE ZALSZUPIN



ADRIANA
ARMCHAIR
JORGE ZALSZUPIN



PAULISTANA
ARMCHAIR
JORGE ZALSZUPIN



801
ARMCHAIR
JORGE ZALSZUPIN



BRASILIANA
ARMCHAIR
JORGE ZALSZUPIN



INA
ARMCHAIR
JORGE ZALSZUPIN



GUANABARA
DINING TABLE
JORGE ZALSZUPIN



GUARUJÁ
DINING TABLE
JORGE ZALSZUPIN



JZ TROLLEY
JORGE ZALSZUPIN



GS
ARMCHAIR
GIUSEPPE SCAPINELLI



ZECA CHAIR
JORGE ZALSZUPIN



**VERANDA
ARMCHAIR**
JORGE ZALSZUPIN



**IPANEMA
ARMCHAIR**
JORGE ZALSZUPIN



**VERÔNICA
ARMCHAIR**
JORGE ZALSZUPIN



PRESIDENCIAL SOFA
JORGE ZALSZUPIN



801 SOFA
JORGE ZALSZUPIN



BRASILIANA SOFA
JORGE ZALSZUPIN



ONDA BENCH
JORGE ZALSZUPIN



ON SOFA
OSCAR NIEMEYER



COMPONIVEL SIDEBORD
JORGE ZALSZUPIN



COMPONIVEL DRESSING TABLE
JORGE ZALSZUPIN



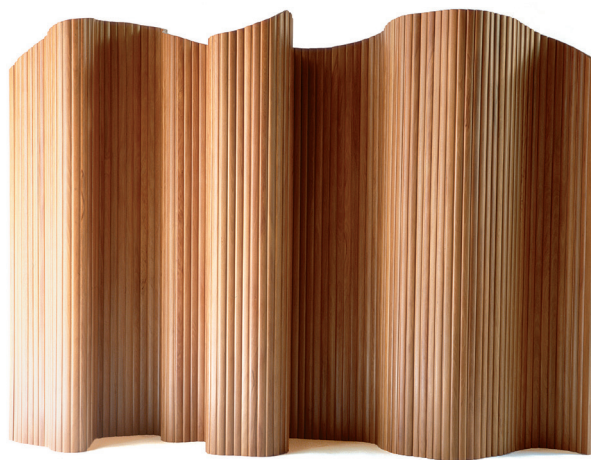
ETEL CARMONA

A self-taught designer, Etel started her career in the 1980s, restoring period furniture in her country house. Under the layers of paint and varnish, she discovered beautiful woods and exquisite construction. It led her to believe that Brazilian woods are like jewels and deserve to be valued and preserved.

She uses classic techniques from traditional joinery which she then leaves visible, so everyone can admire the beauty of the finger joint and dovetailing. In 1985, she launched ETEL, producing furniture designed by renowned designers and artists as well as re-issuing Brazilian modernist furniture, preserving and cherishing this rich legacy.

Since 1999, Etel has been involved in sustainable projects with certified wood from responsibly managed forests in the Amazon region, as well as the empowerment and development of professional skills of forest populations. In 2001, ETEL was one of the first furniture companies in Brazil to be awarded the FSC® - Forest Stewardship Council® certification.

etel.design
mamacasa.com.au



ETEL CARMONA
ESTEIRA SCREEN
1998 TIMBERS

DIMENSIONS
D x W x H (cms):
2 x 200 x 180cm
2 x 300 x 180cm
2 x 400 x 180cm
2 x 500 x 180cm

TIMBER: Cedar, Freijo, Imbuia



ETEL CARMONA
JATOBA BOOKCASE
2002 TIMBERS

VARIOUS
SIZES



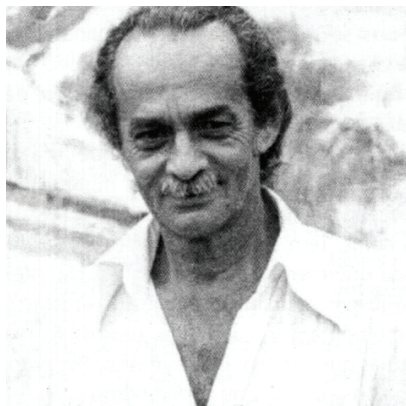
ETEL CARMONA
MARIA PRECIOSA SIDE TABLES,
COFFEE TABLE & OTTOMAN
2008

Available in various sizes and finishes. Nero Marquina Marble, Navona Travertine, Bamboo Green Granite, Glass. TIMBER: Freijo, Imbuia, Sucupira



DADO CASTELLO BRANCO,
ETEL CARMONA
DINING TABLE /
PING PONG TABLE
2014

DIMENSIONS:
D153 x W274 x H76cm
FINISHING: Copper, Leather
TIMBER: Cedar, Freijo, Imbuia, Sucupira



JOSÉ ZANINE CALDAS

1919 - 2001

José Zanine Caldas possessed unsurpassed skills. A self-taught designer, he could transform wood into magnificently sensual pieces, understanding the full beauty and potential of this precious material.

Most of his designs tap into the modernist aesthetics whilst displaying exceptionally unique shapes: form and function revisited with a twist.

Some of his standout signature pieces are the Y Chair, the V Dining Chair, the F Armchair and R Armchair, and the ZC2 Coffee Table. Beautifully carved from ipe timber (Brazilian walnut), all stand the test of time; they speak of sensual creativity and unsurpassed originality.

etel.design
mamacasa.com.au



JOSE ZANINE CALDAS
Z ARMCHAIR
1950 / 2019

DIMENSIONS: D50.5 x W54.5 x H73cm
FINISHING: Leather, Fabric. TIMBER: Ipe



JOSE ZANINE CALDAS
V ARMCHAIR
1950 / 2019

DIMENSIONS:
D57.6 x W45.1
x H81.8cm
FINISHING:
Leather, Fabric
TIMBER: Ipe



JOSE ZANINE CALDAS
ZC2 CHAISE LOUNGE
1950 / 2019

DIMENSIONS
D153 x W50 x H76.5cm
FINISHING: Steel, Cord



JOSE ZANINE CALDAS
ZC2 CHAISE LOUNGE
1950 / 2019

ARMCHAIR
D70 x W59 x H74cm
FINISHING: Leather
TIMBER: Ipe



JOSE ZANINE CALDAS
R ARMCHAIR
1950 / 2019

DIMENSIONS:
D102.5 x W81 x H105.5cm
FINISHING: Leather, Fabric
TIMBER: Ipe
(Ebonized, Stained or Natural)

JOSE ZANINE CALDAS
ZECA RMCHAIR
1950 / 2019



DIMENSIONS:
D178 x W175 x H195.5cm
FINISHING: Leather, Fabric
TIMBER: Freijo
(Ebonized, Stained or Natural)



All pieces are handmade to order. Embedded seal certifying it's authenticity and part of the ETEL collection.

MAMA CASA

MAMA CASA

All pieces are handmade to order, and include an embedded seal certifying authenticity from each designer's foundation.
All part of the ETEL collection.

Distributed in Australia exclusively by Mama Casa.
To view the full collection, please visit
mamacasa.com.au or etel.design



JORGE ZALSUPIN
JZ TROLLEY
1959 / 2016
BRASS & TIMBER