

grazia&co melbourne
1 / 10-14 advantage road
highett, vic, 3190
phone 03 9555 5760

grazia&co sydney
12b, 32 ralph street
alexandria, nsw, 2015
phone 02 8914 0350

ivy coffee table



designed by architect clare cousins for grazia&co. coloured glass version released in 2022. australian made coffee table. three cylindrical metal post legs in matching powder coat finish with coloured glass top.

grazia&co®

glass



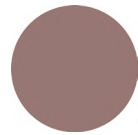
yellow



pink



blue



amber

powder coat



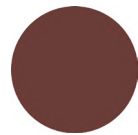
yellow



pink



blue



amber

grazia&co[®]

technical specifications

ivy coffee table

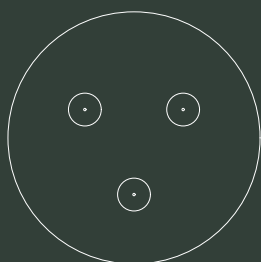
380



300



1000



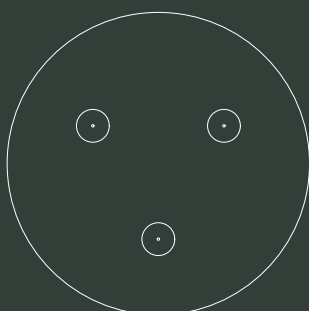
300



380



1200



grazia&co[®]

product specifications

designer

clare cousins of
clare cousins architects
in collaboration with
grazia&co

year designed

2022

warranty

- i. warranty period of 2 years for the structural integrity of the furniture under 'normal use'
- ii. natural materials like solid and veneer timbers can vary in colour, natural figuration and texture. these are not considered faults
- iii. movement, joint separation, bowing as a result of fluctuations in temperature and any damage caused by direct sunlight are not warranted
- iv. day to day use and wear and tear that can cause scratches, expansion, colour changes, chips, burns, splits are not warranted
- v. painted and stained timber can chip. this is not warranted and considered as wear and tear through use of the item
- vi. natural stone, reconstituted stone materials and glass are all materials sourced by external and independent suppliers that have unique and specific warranty details that can be obtained as required on request
- vii. chipping and scratches on powder coated metal due to wear and tear are not warranted
- viii. metal pieces that are not specific to outdoor use that are exposed to the elements are not warranted
- ix. raw metals oxidise and tarnish over time and are not considered faults of manufacturing
- x. broken, missing or ceased attachments like levelling feet, rubber stoppers and felt pads are not warranted
- xi. these tables are made from reinforced 'toughened' glass, ensuring their suitability for both residential and commercial use. in the processing of the glass, small 'seeds' will very occasionally form, appearing as minuscule particles approximately 0.5mm in size. this is not a manufacturing fault but a natural reaction occurring during the manufacturing process.

all terms outlined in this document are applicable exclusively to projects and orders that are based in australia.

for warranty claims outside australia, please note that a 12 month warranty period will apply, all claims are to be taken up with the international selling agent.

to view the full warranty please refer to the link below
<https://graziaandco.com.au/grazia-terms-and-conditions/>



australian
made

2

2 year
warranty

craftmanship:

materials:

lead time:

suitability:

manufactured in australia

metal/10mm toughened glass

if not in stock, 10-12 weeks

indoor use

grazia&co®

finishes & product care

powder coated

items wash as required with warm soapy water using a soft clean cloth. for marine or commercial environments, we recommend regular cleaning. do not pressure wash or steam items that are powder coated. if powder coating chips due to a knock and / or rough treatment this is not covered by warranty. touch up paint can be purchased on request (depending on availability). scratches and chips should be repaired as soon as they appear

glass, perspex, resin and ceramic

these hard flat surface materials should be cleaned and or dusted with a soft cloth. for more stubborn marks, use a non-abrasive mild soap and damp cloth. never use wool metallic scourers as these will scratch the surface. chipping and scratching are considered wear and tear of the product are not warranted

coloured glass

clean table using clean soapy warm water with a soft non-abrasive cloth, such as microfibre. ammonia based cleaners must not be used (windex)



no direct
sunlight

grazia&co[®]