



Artist impression only. Federation facade and Dune external colour scheme shown.

CUMBERLAND

Private outdoor retreat for year-round entertaining.



Another quality home by
Lifestyle Communities

Lifestyle 
SHEPPARTON

 Call 5821 5155

 lifestyleshepparton.com.au

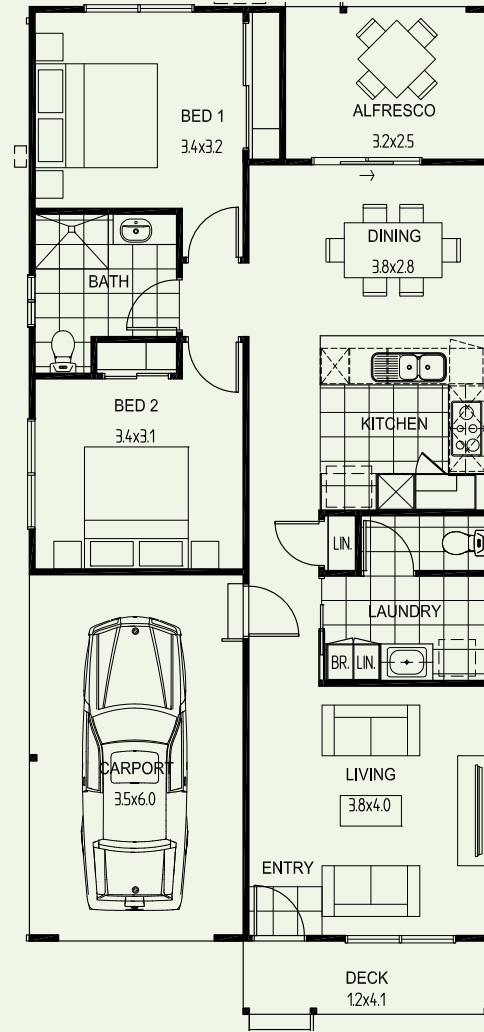
Downsizing to a bigger life

CUMBERLAND



SIZE

LIVING AREA	86.10m ²	9.25sq
ALFRESCO	8.40m ²	0.90sq
CARPORT	21.00m ²	2.25sq
DECK	4.85m ²	0.50sq
TOTAL	120.35m²	12.90sq



FEATURES

- Modern kitchen with stone benchtop, stainless steel appliances including dishwasher, oven, 900mm cooktop and rangehood
- Soft close drawers
- Spacious bedrooms with built-in mirrored robes
- Contemporary bathroom with stone benchtop, heated towel rail, 2100mm high semi-frameless shower screen and tiled shower base
- Separate laundry
- Reverse-cycle split-system heating and cooling
- LED downlights
- Window furnishings throughout
- Wall and ceiling insulation
- Carpets and tiling
- Whirlybird roof vent
- Under roofline alfresco with ceiling fan
- Landscaped front garden
- Colorbond garden shed with concrete floor
- Clothesline and TV aerial
- Internal entry from carport
- Automatic roller door to carport
- NBN enabled
- Front security screen door with stainless steel mesh

For more information contact your
Lifestyle Consultant on 5821 5155

Photographs and illustrations are intended to be a visual aid only and may not accurately represent the actual home. Façade may change at each Lifestyle Community. Drawings not to scale and subject to change without notice. All details are correct at time of publication. E&OE. © 2018 Lifestyle Communities Limited.

Lifestyle 
SHEPPARTON